



County of Orange  
Health Care Agency  
Emergency Medical Services



3<sup>rd</sup> QUARTER 2005 (JUL. – SEP.) SYSTEM ACTIVITY REPORT

*Table of Contents*

Report Distribution..... 1

Introduction.....2

**Central – One Reports (Base Data):**

- Transport / Non-Transport and Destination by Facility Type..... 3
- Call Volume by Receiving Center..... 4
- Call Volume by Provider Agency and ALS Unit..... 5
- Call Volume by Base Hospital..... 9
- Patient Assessment / Primary Suspected Problem – Detailed.....10
- Patient Assessment / Primary Suspected Problem – Condensed..... 12
- Patient Assessment / Primary Suspected Problem – By Age..... 13
- Use of *ALS no-contact* Criteria: by Base Hospital..... 14
- Use of *ALS no contact* Criteria: Patient Assessment / Primary Suspected Problem..... 15
- Trauma Designations..... 16

**Other Reports:**

- Interfacility Transfers via the 9-1-1 System..... 17
- Aeromedical Transports..... 18
- Hospital Diversion: Emergency Department Saturation..... 19
- Hospital Diversion: Trauma Centers..... 20

Glossary..... 21



County of Orange  
Health Care Agency  
Emergency Medical Services



3<sup>rd</sup> QUARTER 2005 (JUL. – SEP.) SYSTEM ACTIVITY REPORT

**REPORT DISTRIBUTION**

This report is distributed to the following individuals, committee members, groups or other entities:

- Ambulance Association of Orange County
- Base Hospital Coordinators
- Base Hospital Physician Directors
- County Paramedic Advisory Committee (CPAC), Orange County EMS
- Each Orange County Paramedic Receiving Center, Base Hospital, and Specialty Receiving Center
- Emergency Medical Care Committee (EMCC)
- Facilities Advisory Subcommittee (FAC), Orange County EMS
- Fire Paramedic Coordinators
- Health Care Agency
  - ✓ Juliette A. Poulson RN, MN; Agency Director
  - ✓ Robert Gates; Project Director, Medical Services for Indigents
  - ✓ Hildy Meyers, MD; Acting Health Officer, Public Health Services
  - ✓ Mark A. Refowitz, LCSW; Deputy Agency Director, Behavioral Health Services
  - ✓ Mike Spurgeon; Deputy Agency Director, Regulatory Health Services
- Hospital Association of Southern California (HASC)
- Mercy Air
- Orange County Communications
- Orange County Fire Chiefs Association
- Orange County Medical Association (OCMA)
- Orange County Paramedic Training Programs
- Quality Assurance Board (QAB), Orange County EMS
- Regional Paramedic Advisory Committees (RPAC), each Base Hospital
- State EMS Authority (EMSA)

Authorized for distribution:

- \_\_\_\_\_  
Bruce E. Haynes MD: Medical Director
- \_\_\_\_\_  
Greg Boswell: Program Director
- \_\_\_\_\_  
Laurent Repass: QI Program Coordinator

Date: 01/30/2006



County of Orange  
Health Care Agency  
Emergency Medical Services



3rd QUARTER 2005 (JUL. - SEP.) SYSTEM ACTIVITY REPORT

**INTRODUCTION**

Orange County EMS (OCEMS) collects data on EMS activity for the purpose of system monitoring and to facilitate continuous quality improvement activities at all levels of the prehospital healthcare delivery system. Data is collected from field providers (paramedics), base hospitals, paramedic receiving centers and trauma centers.

The County of Orange Health Care Agency/Emergency Medical Services Quarterly System Activity Report is generated every three calendar months and reflects system data of interest to all EMS system participants, including hospitals and provider agencies. The quarterly report is actually a series of individual reports and offers a "snapshot" of prehospital emergency medical care in Orange County. Other reports contained herein provide additional insight into Orange County's medical care system.

Data from the Base Hospital Report (BHR) and/or the Prehospital Care Report (PCR) is entered by the Base Hospitals into a database tracking system called *Central-One*, designed by Lancet Technology, Inc. All Base Hospitals are contractually obligated to collect, enter and submit this information to OCEMS. Many of the reports contained in this summary are prepared from information obtained from this database. EMS activity by system participants not entered by the base hospitals into *Central-One* is not reflected in the System Activity Report (i.e. Basic Life Support calls not requiring Advanced Life Support and care).

Data for other reports, such as the Hospital Diversion report is obtained from the ReddiNet computer system. All paramedic receiving center hospitals are required to have the ReddiNet system, used primarily for communications between hospitals and for notifying other System participants of the hospital's open/closed status. The ReddiNet system is also used during mass casualty incidents, whether actual events or planned drills. Reports contained in this quarterly activity report are:

**Central-One Reports:**

- Transport / Non-Transport and Destination by Facility Type
- Call Volume by Receiving Center
- Call Volume by Provider Agency and ALS Unit
- Call Volume by Base Hospital
- Patient Assessment / Primary Suspected Problem – Detailed
- Patient Assessment / Primary Suspected Problem – Condensed
- Patient Assessment / Primary Suspected Problem – By Age
- Use of *ALS no-contact*: by Base Hospital
- Use of *ALS no-contact*: Patient Assessment / Primary Suspected Problem
- Trauma Designations

**Other Reports:**

- Interfacility Transfers via the 9-1-1 System
- Aeromedical Transports
- Hospital Diversion: Emergency Department Saturation
- Hospital Diversion: Trauma Centers

*Suggestions for additional reports are welcome and should be directed to Bruce E. Haynes, M.D., Medical Director of OCEMS.*



County of Orange  
Health Care Agency  
Emergency Medical Services

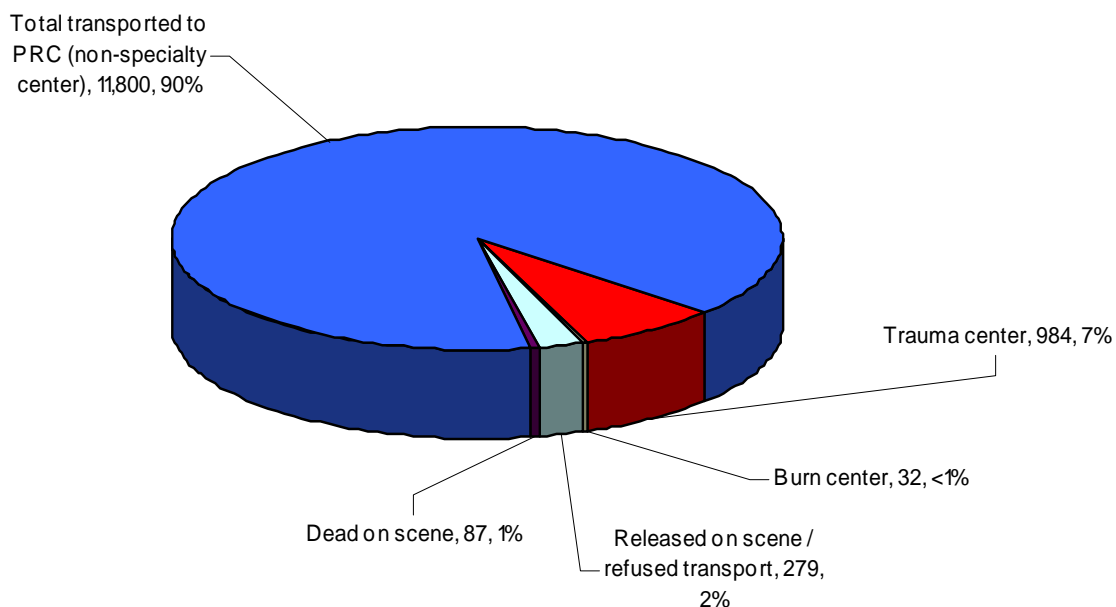


3rd QUARTER 2005 (JUL. - SEP.) SYSTEM ACTIVITY REPORT

***Transport / Non-transport and Destination by Facility Type***

This report provides a quick overview of the disposition of patients seen by ALS providers (transported and not transported) and entered into the *Central-One* database. The numbers of patients transported to either a regular paramedic receiving center or to a specialty center are shown; for non-transported patients, the number who are released on scene and/or refuse transport, and those who are dead on scene are listed. Data Source: Central-One

<b>Total Number of Calls</b>	<b>13,182</b>	<b>100%</b>
<b>Total Number of Patients Transported</b>	<b>12,816</b>	<b>97%</b>
Total transported to PRC (non-specialty center)	11,800	90%
Total transported to specialty center	1,016	8%
<i>Trauma center</i>	984	7%
<i>Burn center</i>	32	<1%
<b>Total Number of Patients Not Transported</b>	<b>366</b>	
<i>Released on scene / refused transport</i>	279	2%
<i>Dead on scene</i>	87	<1%





**County of Orange  
Health Care Agency  
Emergency Medical Services**



**3rd QUARTER 2005 (JUL. - SEP.) SYSTEM ACTIVITY REPORT**

***Call Volume by Receiving Center***

This report provides a breakdown of the number of patient transports to each of the approved paramedic receiving centers in Orange County as well as those hospitals outside of Orange County approved to receive EMS patients. Data Source: Central-One

<b>ID#</b>	<b>RECEIVING HOSPITAL</b>	<b># Patients</b>	<b>Percentage (Rounded)</b>
01	Anaheim General Hospital	127	1%
02	Anaheim Memorial Medical Center	719	5%
05	Chapman Medical Center	137	1%
15	Coastal Communities Hospital	167	1%
07	Fountain Valley Regional Medical Center	472	4%
19	Garden Grove Hospital & Medical Center	368	3%
09	Hoag Memorial Hospital – Presbyterian	1,532	12%
10	Huntington Beach Hospital	486	4%
39	Irvine Regional Medical Center	484	4%
04	Kaiser Foundation – Orange County	308	2%
12	La Palma Intercommunity Hospital	127	1%
13	Los Alamitos Medical Center	417	3%
17	Mission Regional Hospital & Medical Center	1,163	9%
38	Orange Coast Memorial Hospital	339	3%
20	Placentia Linda Hospital	344	3%
21	Saddleback Memorial Medical Center	863	7%
22	St. Joseph Hospital	797	6%
23	St. Jude Medical Center	659	5%
24	San Clemente Hospital	232	2%
25	South Coast Medical Center	191	1%
26	Tustin Hospital & Medical Center	27	<1%
27	UCI Medical Center	783	6%
28	West Anaheim Medical Center	650	5%
29	Western Medical Center – Santa Ana	896	7%
30	Western Medical Center – Anaheim	324	2%
<b>LA County Hospitals</b>			
53	Community Hospital of Long Beach	12	<1%
34	Long Beach Memorial Medical Center	88	<1%
56	Presbyterian Intercommunity Hospital	18	<1%
37	St. Mary Medical Center	1	<1%
55	Whittier Medical Center	52	<1%
36	Other	12	<1%
	Not documented	22	<1%
<b>TOTAL TRANSPORTED PATIENTS</b>		<b>12,817</b>	<b>98%</b>
60	Release signed	278	2%
99	Dead on scene	87	<1%
<b>TOTAL NON-TRANSPORTED PATIENTS</b>		<b>365</b>	<b>3%</b>
<b>TOTAL PATIENTS</b>		<b>13,182</b>	<b>100%</b>



**County of Orange  
Health Care Agency  
Emergency Medical Services**



**3rd QUARTER 2005 (JUL. - SEP.) SYSTEM ACTIVITY REPORT**

***Call Volume by Provider Agency and ALS Unit***

This report reflects the number of base contacted, *ALS no-contact*, and CSO calls for each fire department, by individual ALS unit. Basic Life Support calls are not included in this report.

Data Source: Central-One

<b>Agency</b>	<b>Total</b>	<b>Percentage (Rounded)</b>	<b>ALS Unit</b>	<b>Number of Calls</b>
<b>Anaheim Fire</b>	1,832	14%	All units are assigned to Anaheim Memorial Base	
			A 1	275
			A 2	254
			A 3	164
			A 4	297
			A 5	133
			A 6	204
			A 7	111
			A 8	68
			A 9	96
			A 10	61
			A 43	87
			A 44	82
<b>Brea Fire</b>	225	2%	All units are assigned to St. Jude Base	
			Brea 1	134
			Brea 3	91
<b>Costa Mesa Fire</b>	673	5%	All units are assigned to Hoag Base	
			M 81	130
			M 82	113
			M 83	197
			M 84	52
			M 85	181
<b>Fountain Valley Fire</b>	314	2%	All units are assigned to Huntington Beach Base	
			V 31	202
			V 32	110
			VT31 A	2
<b>Fullerton Fire</b>	536	4%	All units are assigned to St. Jude Base	
			F 1	173
			F 2	124
			F 4	122
			F 5	117
<b>Garden Grove Fire</b>	566	4%	All units are assigned to UCIMC Base	
			G 1	305
			G 2	146
			G 3	1
			G 5	114
			G 6 A	0
			G 7 A	0
			G 1	305



**County of Orange  
Health Care Agency  
Emergency Medical Services**



**3rd QUARTER 2005 (JUL. - SEP.) SYSTEM ACTIVITY REPORT**

*Call Volume by Provider Agency and ALS Unit: Continued*

Agency	Total	Percentage (Rounded)	ALS Unit	Number of Calls
<b>Huntington Beach Fire</b>	942	7%	All units are assigned to Huntington Beach Base	
			H 41	207
			H 42	158
			H 43	86
			H 44	92
			H 45	177
			H 46	73
			H 47	45
			H 48	100
			H 245	4
<b>Laguna Beach Fire</b>	152	1%	All units are assigned to Hoag Base	
			L 1	107
			L 4	45
<b>Los Angeles County Fire</b>	224	2%	All units are assigned to St. Jude Base	
			LAS 191	224
			LAE 191	0
			LAE 192	0
			LAE 193	0
<b>Newport Beach Fire</b>	607	5%	All units are assigned to Hoag Base	
			N 62	240
			N 63	215
			N 65	152
			N 68 A	0
<b>Orange Fire</b>	697	5%	All units are assigned to UCIMC Base	
			O 1 A	5
			O 2 A	5
			O 3 A	18
			O 4 A	16
			O 5 A	48
			O 6 A	4
			O 7 A	0
			O 8 A	2
			OR 3	210
			OR 4	177
			OR 5	212
<b>Santa Ana Fire</b>	1,120	9%	Units are assigned to West Med Santa Ana Base	
			SA 1	255
			SA 3	145
			SA 4	163
			SA 5	252
			SA 7	167
			SA 8	138



**County of Orange  
Health Care Agency  
Emergency Medical Services**



**3rd QUARTER 2005 (JUL. - SEP.) SYSTEM ACTIVITY REPORT**

*Call Volume by Provider Agency and ALS Unit: Continued*

Agency	Total	Percentage (Rounded)	ALS Unit	Number of Calls
<b>Orange County Fire</b>	5,256	40%	Units are assigned to Base Hospital as noted	
		HBH	OCFA 2 A	0
		WMSA	OCFA 4	177
		MISSION	OCFA 5	170
		WMSA	OCFA 6 A	114
		MISSION	OCFA 7	196
		WMSA	OCFA 8 A	1
		MISSION	OCFA 9 A	39
		SJMC	OCFA 10 A	0
		HBH	OCFA 13 A	2
		HBH	OCFA 17	203
		MISSION	OCFA 18	2
		MISSION	OCFA 19	173
		WMSA	OCFA 21	251
		MISSION	OCFA 22	279
		MISSION	OCFA 222	289
		WMSA	OCFA 23	58
		MISSION	OCFA 24	224
		HBH	OCFA 25 A	2
		WMSA	OCFA 26	172
		WMSA	OCFA 27	1
		MISSION	OCFA 29	160
		MISSION	OCFA 30 A	38
		MISSION	OCFA 31	178
		SJMC	OCFA 32	109
		SJMC	OCFA 34	218
		SJMC	OCFA 35 A	2
		WMSA	OCFA 36 A	128
		WMSA	OCFA 37 A	1
		MISSION	OCFA 38	134
		MISSION	OCFA 39 A	36
		MISSION	OCFA 40 A	4
		MISSION	OCFA 42 A	6
		WMSA	OCFA T43 A	0
		HBH	OCFA 44A	0
		MISSION	OCFA 45 A	118
		HBH	OCFA 46	176
		HBH	OCFA T46 A	0
		HBH	OCFA 48	257
		MISSION	OCFA T49 A	17
		MISSION	OCFA 50 A	29
		MISSION	OCFA 51	74



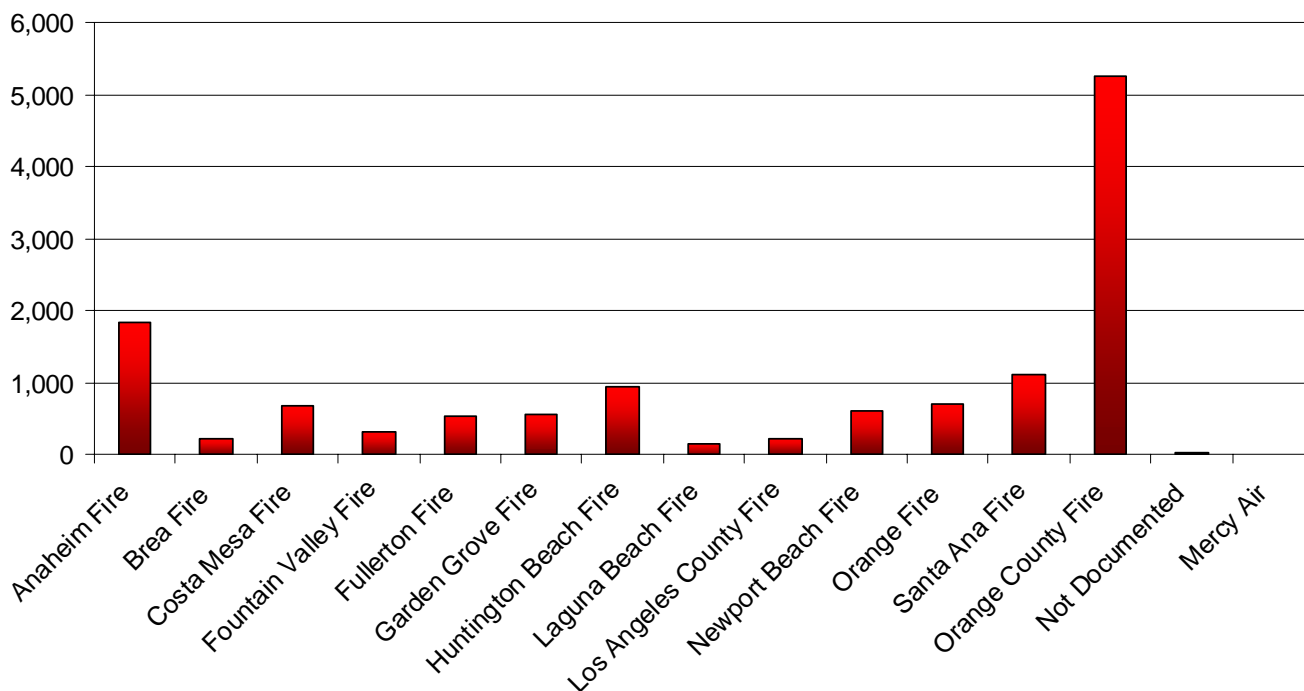
**County of Orange  
Health Care Agency  
Emergency Medical Services**



**3rd QUARTER 2005 (JUL. - SEP.) SYSTEM ACTIVITY REPORT**

Call Volume by Provider Agency and ALS Unit: Continued

Agency	Total	Percentage (Rounded)	ALS Unit	Number of Calls	
<b>Orange County Fire, cont</b>			Units are assigned to Base Hospital as noted		
			SJMC	OCFA 53 A	1
			MISSION	OCFA 54 A	14
			MISSION	OCFA 55 A	0
			MISSION	OCFA 57 A	26
			MISSION	OCFA 58	70
			MISSION	OCFA T59	87
			MISSION	OCFA 60	129
			SJMC	OCFA 61	320
			SJMC	OCFA 62	120
			SJMC	OCFA 63 A	6
			HBH	OCFA 64	187
			HBH	OCFA 65	133
			HBH	OCFA 66	135
			WMSA	OCFA 215 A	0
<b>Mercy Air</b>	11	<1%			
<b>Not Documented</b>	19	<1%			
<b>TOTAL</b>	<b>13,182</b>	<b>100%</b>			





County of Orange  
Health Care Agency  
Emergency Medical Services



3rd QUARTER 2005 (JUL. - SEP.) SYSTEM ACTIVITY REPORT

***Call Volume by Base Hospital***

This report shows the number of calls managed by each of the six Base Hospitals for patient encounters in which paramedics established on-line medical control, as well as those managed under the *ALS no-contact* criteria. One ALS provider agency operates under an expanded scope termed *Comprehensive Standing Orders (CSO)*; these calls are reflected in the data reported by the one Paramedic Resource Hospital. Data Source: Central-One

<b><i>Paramedic Resource Hospital</i></b>	<b><i>Total number of calls</i></b>	<b><i>Percentage of total county calls (Rounded)</i></b>
Anaheim Memorial	1,495	11%
<b><i>Base Hospital</i></b>		
Hoag Memorial Presbyterian	1,468	11%
Huntington Beach	2,326	18%
Mission Regional Medical Center	2,479	19%
St. Jude Medical Center	1,735	13%
UCI Medical Center	1,650	13%
Western Medical Center, Santa Ana	2,029	15%
<b>Total</b>	<b>13,182</b>	<b>100%</b>

**COMMENT:**

All *Base Hospitals* have a radio and are able to provide on-line medical direction to field paramedics, using a specially trained Registered Nurse (known as a Mobile Intensive Care Nurse) to relay instructions from the Base Hospital physician. A *Paramedic Resource Hospital* does not have a radio and cannot provide on-line medical direction. Paramedics assigned to the *Paramedic Resource Hospital* operate under an expanded scope termed *Comprehensive Standing Orders* and do not require on-line medical direction for the majority of their calls. When on-line medical direction is required, contact is made with one of the Base Hospitals, usually UCI Medical Center.



**County of Orange  
Health Care Agency  
Emergency Medical Services**



**3rd QUARTER 2005 (JUL. - SEP.) SYSTEM ACTIVITY REPORT**

***Patient Assessment / Primary Suspected Problem – Detailed***

When paramedics evaluate a patient, they and the base hospital make a working diagnosis or assessment of the patient's presumed medical problem. This report summarizes the types of medical problems encountered by ALS providers, grouped by general classifications. See the Glossary for additional information. (The alpha-numeric indicator preceding each assessment is the OCEMS-assigned approved coding used when entering information into the Lancet database.) *Data Source: Central-One*

<b>Assessment Category</b>	<b>Specific Assessment</b>	<b>Number</b>	<b>Percent</b>
<b>Total</b>			
<b>Airway Problems</b>	<b>Total</b>	<b>54</b>	<b>&lt;1%</b>
A 04, A 05	Croup / epiglottitis	9	<1%
	All others	45	<1%
<b>Breathing Problems</b>	<b>Total</b>	<b>1,463</b>	<b>11%</b>
B 03	Asthma	267	2%
B 02	COPD	261	2%
B 14 / B 01	CHF / Pulmonary Edema	288	2%
	All others	647	5%
<b>Circulatory Problems</b>	<b>Total</b>	<b>3,499</b>	<b>27%</b>
C 01	Syncope	715	5%
C 08	Angina	1,001	8%
C 09	R/O MI	730	6%
C16	STEMI to CVRC	30	<1%
C 10	Dysrhythmias	353	3%
C 07 / C 03	Hypovolemic Shock / Cardiogenic Shock	81	<1%
C 04	GI bleeding	151	1%
	All others	441	4%
<b>Delicate CNS</b>	<b>Total</b>	<b>3,213</b>	<b>24%</b>
D 01	Alcohol-related	242	2%
D 05 / D 06	Overdose / drug ingestion	457	3%
D 02	Seizure (non-febrile)	777	6%
D 07 / D 23	CVA / TIA	654	5%
D 12	Head trauma to PTRC	29	<1%
D 24	Head trauma to PRC (e.g., concussion)	94	<1%
	All others	960	7%
<b>External Soft Tissue</b>	<b>Total</b>	<b>188</b>	<b>1%</b>
E 03 / E 04 / E 05 / E 08	Burns (All Categories)	147	1%
E 12	Burn victim to Burn Center	29	<1%
	All others	12	<1%



**County of Orange  
Health Care Agency  
Emergency Medical Services**



**3rd QUARTER 2005 (JUL. - SEP.) SYSTEM ACTIVITY REPORT**

*Patient Assessment / Primary Suspected Problem - Detailed: Continued*

<b>Assessment Category</b>	<b>Specific Assessment</b>		
<b>Skeletal Injuries</b>	<b>Total</b>	<b>426</b>	<b>3%</b>
F 01 / F 02 / F 03	Suspected fracture (all)	180	1%
F 05	Amputation	13	<1%
F06	Strain/Sprain	105	1%
	All others	128	1%
<b>GI / GU</b>	<b>Total</b>	<b>475</b>	<b>4%</b>
G 01 / G 02	Abdominal pain (all)	273	2%
G 08	Flank / Groin pain (e.g., kidney stones)	50	<1%
	All others	152	1%
<b>Multiple System Problems</b>	<b>Total</b>	<b>3516</b>	<b>26%</b>
H 01	Cardiopulmonary arrest - medical	310	2%
H 20 / H 21	Cardiopulmonary arrest - traumatic	7	<1%
H 03	Hypertension	14	<1%
H 04 / H 05	Diabetic-related problem	717	5%
H 06	Submersion (drowning /near-drowning)	17	<1%
H 08	MTV to PRC	90	<1%
H 09	MTV / CTV to PTRC	955	7%
H10	General Weakness	709	5%
H15	Allergic Reaction	98	<1%
H18	Hypotension	128	1%
	All others	475	4%
<b>OB / GYN</b>	<b>Total</b>	<b>97</b>	<b>&lt;1%</b>
I 06	Field delivery	16	<1%
I 03 / I 04 / I 05 / I 07 / I 11	Other OB-related	14	<1%
I 01	Gynecological	33	<1%
	All others	34	<1%
<b>Pediatric</b>	<b>Total</b>	<b>154</b>	<b>1%</b>
J 03 / J 04	Newborn	17	<1%
J 07	Febrile seizure	102	1%
J 01	Suspected SIDS	1	<1%
	All others	34	<1%
<b>Not Documented</b>		<b>37</b>	<b>&lt;1%</b>



County of Orange  
Health Care Agency  
Emergency Medical Services



3rd QUARTER 2005 (JUL. - SEP.) SYSTEM ACTIVITY REPORT

***Patient Assessment / Primary Suspected Problem – Condensed***

This report summarizes the general assessment categories and the most frequently used specific initial assessment for all patient encounters (ALS Assessment, Base Hospital Contacted, ALS No-Contact Criteria, and Comprehensive Standing Orders “CSO”). *Data Source: Central-One*

***By Assessment Category***

Assessment Category	Number	Percentage (Rounded)
Airway Problems	54	<1%
Breathing Problems	1,463	11%
Circulatory Problems	3,502	27%
Delicate CNS	3,213	24%
External Soft Tissue	188	1%
Skeletal Injuries	426	3%
GI / GU	475	4%
Multiple System Problems	3,520	26%
OB / GYN	150	1%
Pediatric	154	1%
Not Documented	37	<1%
<b>Total</b>	<b>13,182</b>	<b>100%</b>

***Most Frequently Used Assessment, Listed in Descending Frequency***

	Specific Assessment	Number	Percentage (Rounded)
1.	Seizures (non-febrile)	777	6%
2.	Angina / rule out MI	730	6%
3.	Hypoglycemia/Diabetic	715	5%
4.	Syncope	714	5%
5.	General weakness	709	5%
6.	CVA/TIA	654	5%
7.	Breathing problems, other	647	5%
8.	Asthma / COPD	528	4%
9.	Alcohol or drug ingestion / OD	457	3%
10.	Cardiopulmonary arrest - medical	310	2%
	All other assessments	6,941	53%
	<b>Total</b>	<b>13,182</b>	<b>100%</b>



**County of Orange  
Health Care Agency  
Emergency Medical Services**



**3rd QUARTER 2005 (JUL. - SEP.) SYSTEM ACTIVITY REPORT**

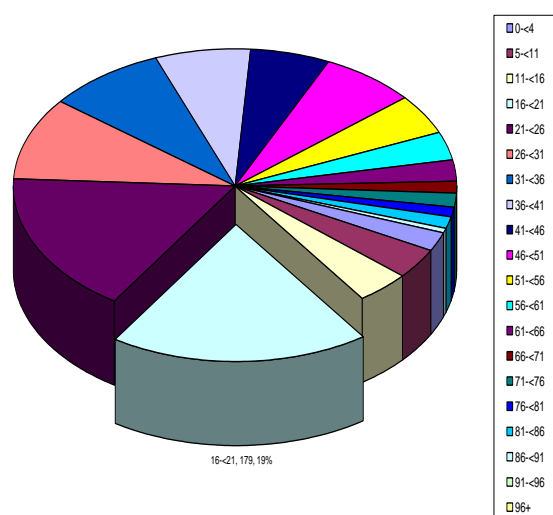
**Patient Assessment / Primary Suspected Problem – By Age**

This report summarizes the most frequently used specific initial assessment for all patient encounters (ALS Assessment, Base Hospital Contacted, ALS No-Contact Criteria, and Comprehensive Standing Orders “CSO”) and categorizes them by the patient’s age (in years). \*\*Note: Totals do not include “Blank” and “Not Documented” items.\*\* Data Source: Central-One

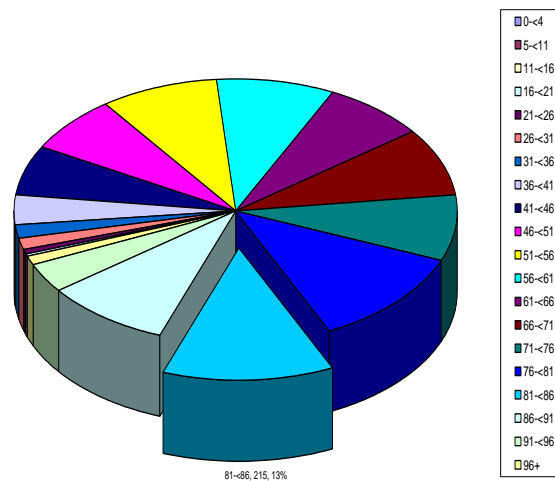
Assessment	0-<4	5-<11	11-<16	16-<21	21-<26	26-<31	31-<36	36-<41	41-<46	46-<51
Angina/ rule out MI	0	0	1	1	10	23	29	64	103	123
MTV / CTV to PTRC	20	36	37	179	157	93	82	66	55	67
Seizures	37	53	34	66	56	58	65	76	77	58
Syncope	0	3	12	30	13	21	27	19	28	33
CVA / TIA	0	0	0	1	1	2	2	6	18	21
Asthma/ COPD	10	17	24	11	18	12	12	15	10	21
Hyper/Hypoglycemia / Diabetic	1	5	1	16	13	14	23	34	33	39
General Weakness	0	3	7	6	10	12	10	16	21	17
Drug Ingestion / OD / Poisoning	5	0	12	59	57	40	56	49	53	41
Cardiopulmonary Arrest-Medical	6	4	2	7	5	10	3	9	10	24
All other Assessments	128	117	133	258	276	215	232	302	299	327
<b>Total</b>	<b>207</b>	<b>238</b>	<b>263</b>	<b>634</b>	<b>616</b>	<b>500</b>	<b>541</b>	<b>656</b>	<b>707</b>	<b>771</b>
<b>Percentage</b>	<b>2%</b>	<b>2%</b>	<b>2%</b>	<b>5%</b>	<b>5%</b>	<b>4%</b>	<b>4%</b>	<b>5%</b>	<b>5%</b>	<b>6%</b>

Assessment	51-<56	56-<61	61-<66	66-<71	71-<76	76-<81	81-<86	86-<91	91-<96	96+
Angina/ rule out MI	147	149	129	142	139	207	215	158	61	18
MTV / CTV to PTRC	45	32	22	15	16	9	14	5	0	0
Seizures	54	20	29	18	16	22	16	9	5	0
Syncope	32	46	42	47	60	98	89	68	36	11
CVA / TIA	27	33	43	44	75	103	125	97	41	10
Asthma/ COPD	22	33	51	47	60	71	55	29	7	2
Hyper/Hypoglycemia / Diabetic	67	61	51	55	87	90	72	34	10	1
General Weakness	31	42	42	48	72	133	120	63	40	12
Drug Ingestion / OD / Poisoning	27	15	13	11	6	8	7	3	0	1
Cardiopulmonary Arrest-Medical	25	23	31	32	24	29	39	16	7	2
All other Assessments	294	324	270	316	385	519	596	366	179	55
<b>Total</b>	<b>771</b>	<b>778</b>	<b>723</b>	<b>775</b>	<b>940</b>	<b>1289</b>	<b>1348</b>	<b>848</b>	<b>386</b>	<b>112</b>
<b>Percentage</b>	<b>6%</b>	<b>6%</b>	<b>5%</b>	<b>6%</b>	<b>7%</b>	<b>10%</b>	<b>10%</b>	<b>7%</b>	<b>3%</b>	<b>1%</b>

MTV / CTV to PTRC



Angina/ rule out MI





**County of Orange  
Health Care Agency  
Emergency Medical Services**



**3rd QUARTER 2005 (JUL. - SEP.) SYSTEM ACTIVITY REPORT**

***Use of ALS No-Contact Criteria: By Base Hospital***

This report shows the frequency of use of *ALS No-Contact* criteria by paramedics assigned to each Base Hospital. (See OCEMS Treatment Guideline I-40 for specific criteria). *Data Source: Central-One*

<b><i>Paramedic Resource Hospital</i></b>	<b><i>Total # of calls</i></b>	<b><i># of base contact calls</i></b>	<b><i># of CSO calls</i></b>	<b><i>% of CSO calls</i></b>
Anaheim Memorial	1,495 <sup>1</sup>	N/A	1,495	100%
<b><i>Base Hospital</i></b>	<b><i>Total # of calls</i></b>	<b><i># of base contact calls</i></b>	<b><i># of ALS no-contact calls</i></b>	<b><i>% of ALS no-contact calls</i></b>
Hoag Memorial	1,468	721	747	51%
Huntington Beach	2,326	1388	938	40%
Mission Regional Med Cntr	2,479	1,291	1,188	48%
St. Jude Medical Center	1,735	1,085	650	37%
UCI Medical Center	1,650	1,213	437	26%
Western Medical Center Santa Ana	2,029	1,097	932	48%
<b>Total (ALS no-contact calls only)</b>	<b>-----</b>	<b>-----</b>	<b>4,892<sup>2</sup></b>	<b>37%</b>
<b>Total (all base hospitals)</b>	<b>11,687</b>	<b>6,795</b>	<b>6,387<sup>3</sup></b>	<b>48%</b>
<b>Total (all county)</b>	<b>13,182</b>	<b>6,795<sup>4</sup></b>	<b>-----</b>	<b>52%</b>

<sup>1</sup> The number of base contacted calls for the Paramedic Resource Hospital is included in the numbers reported by the Base Hospitals.

<sup>2</sup> This reflects the total number of ALS no-contact calls only. The corresponding percentage relates to the total number of ALS no-contact calls (4,892) to the total number of ALS Base Hospital Contacted calls throughout the county (11,687).

<sup>3</sup> The total number of ALS no-contact and Comprehensive Standing Orders (CSO) calls for each of the hospitals. The corresponding percentage relates to the total number of ALS no-contact and CSO calls (6,387) to the total number of ALS calls throughout the county (13,182).

<sup>4</sup> The total number of Base Hospital Contact calls. The corresponding percentage relates to the total number of Base Hospital Contact calls (6,795) to the total number of ALS calls throughout the county (13,182).

COMMENT: Paramedics assigned to the Paramedic Resource Hospital practice under an expanded scope termed *Comprehensive Standing Orders* which allows for fewer base contacts for on-line medical direction. Although any of the six Base Hospitals can be utilized for on-line medical control, UCI Medical Center is the hospital most commonly contacted.

Use of *ALS No-Contact* varies at each of the Base Hospitals. The percentage of *ALS No-Contact* calls at each Base reflects usage by paramedics assigned to that Base Hospital. See the report "*Call Volume by Provider Agency and ALS Unit*" to determine which units are assigned to each Base Hospital.



County of Orange  
Health Care Agency  
Emergency Medical Services



3rd QUARTER 2005 (JUL. - SEP.) SYSTEM ACTIVITY REPORT

**Use of ALS No-Contact Criteria: Patient Assessment/Primary Suspected Problem**

This report shows the general assessment category and the most frequently used specific initial assessments when paramedics use *ALS no-contact* criteria. This report does not include use of Comprehensive Standing Orders (CSO). *Data Source: Central-One*

***By Assessment Category***

Assessment Category	Number	Percentage (Rounded)
Airway Problems	22	<1%
Breathing Problems	388	8%
Circulatory Problems	1,129	23%
Delicate CNS	1,505	31%
External Soft Tissue	94	2%
Skeletal Injuries	234	5%
GI / GU	255	5%
Multiple System Problems	1,156	24%
OB / GYN	71	1%
Pediatric	37	<1%
<b>Total</b>	<b>4,892</b>	<b>100%</b>

***Most Frequently Used Assessment, Listed in Descending Frequency***

	Specific Assessment	Number	Percentage (Rounded)
1.	Delicate CNS, all other	583	12%
2.	General weakness	462	9%
3.	Syncope	424	9%
4.	Hypoglycemia/Diabetic	393	8%
5.	Seizures (non-febrile)	354	7%
6.	CVA/TIA	342	7%
7.	Breathing problems, other	273	6%
8.	Alcohol or drug ingestion / OD	226	5%
9.	Asthma / COPD	115	2%
10.	Angina / rule out MI	23	<1%
	All other assessments	1,697	35%
	<b>Total</b>	<b>4,892</b>	<b>100%</b>



**County of Orange  
Health Care Agency  
Emergency Medical Services**



**3rd QUARTER 2005 (JUL. - SEP.) SYSTEM ACTIVITY REPORT**

***Trauma Designations***

Patients sustaining either penetrating or blunt-force injuries meeting specified criteria are classified as either a *critical trauma victim (CTV)* or a *moderate trauma victim (MTV)* and are triaged to a specialty hospital approved by OCEMS to evaluate and treat these types of patients. (See OCEMS policy 310.30).  
NOTE: THIS REPORT IS GENERATED ON DATA ENTERED INTO THE CENTRAL ONE DATABASE, NOT TRAUMA ONE. This multi-part report summarizes:

*Trauma designations per Base Hospital / Paramedic Resource Hospital*

The number of ALS patients meeting trauma criteria designated by each base hospital and transported to a PTRC.

<b>Base Hospital</b>	<b>Total by Base Hospital</b>	<b>Trauma Designations</b>	<b>% of "Trauma Designations" to "Total by Base Hospital"</b>	<b>% of all Trauma Designations</b>
Anaheim Memorial	1,495	101	7%	10%
Hoag	1,468	95	6%	10%
Huntington Beach	2,326	170	7%	17%
Mission	2,479	165	7%	16%
St. Jude	1,735	98	6%	10%
UCI Medical Center	1,650	157	11%	16%
Western Medical – Santa Ana	2,029	198	10%	20%
<b>Total</b>	<b>13,182</b>	<b>984</b>	<b>7%</b>	<b>100%</b>

*Designated trauma patients received at each Paramedic Trauma Receiving Center (PTRC)*

The number of trauma patients received by each of the three Orange County trauma hospitals and one trauma hospital in LA County approved to receive OC EMS trauma patients.

<b>Trauma Hospital</b>	<b>Number of traumas</b>	<b>Percentage</b>
Mission	198	20%
UCI Medical Center	418	43%
Western Medical – Santa Ana	329	33%
Long Beach Memorial	39	4%
Other	0	0%
<b>Total</b>	<b>984</b>	<b>100%</b>

*Categories / types of designated trauma patients directed to a PTRC*

The general classifications or types of trauma patients, designated by the base hospitals for transport to a PTRC. (\* Not Documented cases not included in overall percentage calculations.)

<b>Classification</b>	<b>Number</b>	<b>Percentage</b>
Critical trauma victim (CTV)	176	18%
Moderate trauma victim (MTV)	781	80%
Traumatic full arrest	7	<1%
Neurosurgical emergency	20	2%
<b>Total</b>	<b>984</b>	<b>100%</b>



**County of Orange  
Health Care Agency  
Emergency Medical Services**



**3rd QUARTER 2005 (JUL. - SEP.) SYSTEM ACTIVITY REPORT**

***Interfacility Transfers via the 9-1-1 System***

This report lists the number of occasions in which paramedic receiving centers accessed the 9-1-1 system to utilize paramedics to monitor and escort patients to another acute care hospital for higher level of care, listed by sending facility and reason for transfer. (See OCEMS policy 670.10.) NOTE: INTERFACILITY TRANSFERS ARE ONLY PERFORMED AFTER THE PATIENT HAS BEEN MEDICALLY EVALUATED AND A PHYSICIAN HAS DETERMINED THAT THE PATIENT REQUIRES A SERVICE NOT AVAILABLE AT THE INITIAL FACILITY. FEDERAL TRANSFER GUIDELINES APPLY.

ID#	Hospital	Total	IFT	CC	neuro-M	neuro-T	trauma	cardiac	vascular	OB	burn	peds	other
01	Anaheim General	3	3			1	1	1					
02	Anaheim Memorial Medical Center	21	21		2	2	14		1			1	1
03	Brea Community Hospital	0	Closed as PRC April 2005										
05	Chapman General	12	12		2	2	4	3			1		
33	Children's Hospital of Orange Co.	0	0										
15	Coastal Communities Hospital	8	8		1	3	3	1					
07	Fountain Valley Hospital	8	8		3	1	4						
19	Garden Grove Medical Center	7	6	1	1	1	4	1					
09	Hoag Memorial Hospital	3	2	1			2				1		
10	Huntington Beach Hospital	13	9	4	2	2	7			2			
39	Irvine Medical Center	9	9		1	4	4						
04	Kaiser Permanente	1	1				1						
12	La Palma Intercommunity	5	5		4		1						
13	Los Alamitos Medical Center	1	0	1				1					
17	Mission Regional Hospital	0	0										
38	Orange Coast Memorial	11	9	2	1	2	6	1	1				
20	Placentia Linda Hospital	3	2	1	1			2					
21	Saddleback Memorial	3	3		1		2						
22	St. Joseph Hospital	0	0										
23	St. Jude Medical Center	3	3			1	2						
24	San Clemente Hospital	16	15	1	3	2	5	5		1			
25	South Coast Medical Center	2	1	1				2					
26	Tustin Hospital Medical Center	0	0										
27	UCI Medical Center	0	0										
28	West Anaheim Medical Center	8	5	3	2	3	1			1			1
30	Western Medical Center-Santa Ana	1	1		1								
29	Western Medical Center-Anaheim	0	0										
	Others	0											
<b>Total</b>		<b>138</b>	<b>123</b>	<b>15</b>	<b>25</b>	<b>24</b>	<b>61</b>	<b>17</b>	<b>2</b>	<b>4</b>	<b>2</b>	<b>1</b>	<b>2</b>
<i>Percentage</i>		<i>100%</i>	<i>89%</i>	<i>11%</i>	<i>18%</i>	<i>17%</i>	<i>44%</i>	<i>12%</i>	<i>1%</i>	<i>3%</i>	<i>1%</i>	<i>1%</i>	<i>1%</i>



County of Orange  
Health Care Agency  
Emergency Medical Services



3rd QUARTER 2005 (JUL. - SEP.) SYSTEM ACTIVITY REPORT

**Aeromedical Transports**

This report summarizes all patient transports via helicopter following a 9-1-1 request for scene responses.

Number of aeromedical transports		
<b>Provider</b>	Mercy Air	11
	OCFA Air Rescue	1
<b>Medical situation</b>	Trauma	9
	Medical	2
<b>Circumstances (primary)</b>	Location / Traffic / ETA	10
	Remote area	1
	Prolonged extrication	0
	Time of Day	0
	Local PTRC sat	0
<b>Receiving hospital</b>	Mission	9
	UCIMC	1
	WMSA	1
	LBMCC	0
	Other	0

Mercy Air is the approved *air ambulance* provider in Orange County and is staffed and equipped to provide ALS level care. The Orange County Fire Authority has an *air rescue* helicopter and is neither staffed nor equipped to provide ALS level care. When an *air rescue* helicopter is used for medical transport, a field paramedic must accompany the patient, taking appropriate ALS equipment.

COMMENT: Use of an *air rescue* helicopter for medical transport is restricted to those times when air or ground ambulance is inappropriate or unavailable. The OCFA's *air rescue* helicopter is used primarily when the patient is in a remote, difficult to access area without a landing area, requiring ALS personnel to rappel into the scene and/or the patient to be removed via a Stokes basket and hoist. It is also utilized in search and rescue missions when the patient's location is unknown.

*Reference: California Code of Regulations, Title 22, Division 9, Chapter 8, Sections 100280 and 100281.*



**County of Orange  
Health Care Agency  
Emergency Medical Services**



**3rd QUARTER 2005 (JUL. - SEP.) SYSTEM ACTIVITY REPORT**

***Hospital Diversion: Emergency Department Saturation***

This report reflects the total number of hours each paramedic receiving center requested that BLS and ALS ambulances be diverted to another acute care hospital due to Emergency Department Saturation. (See OCEMS policy 310.96). *Data Source: Reddinet*

NOTE: HOSPITALS COULD STILL RECEIVE BLS / ALS PATIENTS WHILE REQUESTING DIVERSION

Hospital	Jan. '05 ER Sat	Feb. '05 ER Sat	Mar. '05 ER Sat	Apr. '05 ER Sat	May '05 ER Sat	Jun. '05 ER Sat	Jul. '05 ER Sat	Aug. '05 ER Sat	Sep. '05 ER Sat	Oct. '05 ER Sat	Nov. '05 ER Sat	Dec. '05 ER Sat	'05 YTD ER Sat
Anaheim General	46:23:00	23:37:00	35:04:00	65:28:00	18:31:00	21:18:00	48:10:00	22:07:00	47:28:00	XXX	XXX	XXX	328:06:00
Anaheim Memorial	7:04:00	30:10:00	2:05:00	5:15:00	0:00:00	0:00:00	7:53:00	1:59:00	0:00:00	XXX	XXX	XXX	54:26:00
Brea Community	20:04:00	31:56:00	0:36:00	Closed as a PRC April 2005									52:36:00
Chapman	19:05:00	8:37:00	10:44:00	13:50:00	11:01:00	4:42:00	0:00:00	1:30:00	7:46:00	XXX	XXX	XXX	77:15:00
Coastal Comm.	69:21:00	25:52:00	35:24:00	33:17:00	19:05:00	5:25:00	13:21:00	15:24:00	22:45:00	XXX	XXX	XXX	239:54:00
Fountain Valley	0:45:00	10:17:00	0:00:00	9:49:00	0:00:00	0:00:00	0:00:00	0:00:00	13:05:00	XXX	XXX	XXX	33:56:00
Garden Grove	13:21:00	2:05:00	3:04:00	7:40:00	4:36:00	12:04:00	0:00:00	7:41:00	3:40:00	XXX	XXX	XXX	54:11:00
Hoag Memorial	0:00:00	15:31:00	12:43:00	7:58:00	0:00:00	0:00:00	0:00:00	0:00:00	0:00:00	XXX	XXX	XXX	36:12:00
Huntington Beach	0:42:00	4:54:00	8:30:00	3:52:00	1:57:00	4:49:00	9:04:00	2:04:00	7:45:00	XXX	XXX	XXX	43:37:00
Irvine Medical	86:35:00	88:22:00	71:07:00	79:11:00	77:58:00	55:45:00	59:21:00	45:58:00	53:34:00	XXX	XXX	XXX	617:51:00
Kaiser	43:11:00	46:40:00	76:34:00	80:43:00	48:53:00	34:14:00	27:37:00	59:51:00	66:26:00	XXX	XXX	XXX	484:09:00
La Palma Int.	17:24:00	26:01:00	4:00:00	11:19:00	29:48:00	7:26:00	16:43:00	4:47:00	4:33:00	XXX	XXX	XXX	122:01:00
Los Alamitos	58:19:00	72:58:00	36:44:00	55:14:00	72:56:00	59:12:00	59:03:00	65:27:00	61:17:00	XXX	XXX	XXX	541:10:00
Mission Hospital	132:25:00	141:12:00	52:31:00	104:39:00	79:15:00	15:55:00	27:47:00	57:26:00	44:31:00	XXX	XXX	XXX	655:41:00
Orange Coast	0:00:00	19:04:00	12:23:00	19:01:00	10:38:00	13:07:00	9:33:00	10:35:00	6:45:00	XXX	XXX	XXX	101:06:00
Placentia Linda	4:58:00	18:30:00	23:22:00	18:23:00	26:11:00	19:48:00	24:48:00	14:14:00	18:36:00	XXX	XXX	XXX	168:50:00
Saddleback	167:18:00	114:44:00	76:14:00	109:09:00	135:47:00	91:52:00	92:37:00	49:47:00	55:26:00	XXX	XXX	XXX	892:54:00
San Clemente	39:20:00	11:42:00	5:18:00	10:12:00	11:04:00	14:26:00	2:16:00	10:44:00	7:52:00	XXX	XXX	XXX	112:54:00
South Coast	14:07:00	18:45:00	1:12:00	5:26:00	5:11:00	7:25:00	11:53:00	20:17:00	4:40:00	XXX	XXX	XXX	88:56:00
St. Joseph	4:24:00	3:39:00	1:37:00	5:59:00	2:56:00	0:00:00	4:47:00	4:07:00	2:27:00	XXX	XXX	XXX	29:56:00
St. Jude	6:13:00	34:56:00	47:00:00	36:06:00	24:25:00	34:56:00	33:27:00	64:50:00	64:56:00	XXX	XXX	XXX	346:49:00
Tustin	0:00:00	1:35:00	0:00:00	1:31:00	3:07:00	2:19:00	0:00:00	0:00:00	0:00:00	XXX	XXX	XXX	8:32:00
UCI Med. Ctr.	49:02:00	126:40:00	51:57:00	82:51:00	109:24:00	138:36:00	183:47:00	76:10:00	86:28:00	XXX	XXX	XXX	904:55:00
West Anaheim	79:59:00	88:10:00	64:27:00	74:54:00	40:26:00	40:51:00	85:57:00	43:07:00	27:08:00	XXX	XXX	XXX	544:59:00
WMC-Anaheim	20:43:00	3:44:00	23:29:00	10:57:00	1:01:00	36:24:00	41:18:00	1:11:00	16:07:00	XXX	XXX	XXX	154:54:00
WMC-Santa Ana	73:24:00	60:57:00	43:35:00	45:56:00	32:29:00	29:47:00	35:02:00	15:53:00	22:55:00	XXX	XXX	XXX	359:58:00
TOTAL	974:07:00	1054:38:00	699:40:00	922:40:00	790:39:00	650:21:00	794:24:00	643:09:00	646:10:00	XXX	XXX	XXX	7175:48:00
MEDIAN	19:34:30	25:56:30	18:02:30	19:01:00	19:05:00	14:26:00	16:43:00	15:53:00	16:07:00	XXX	XXX	XXX	164:48:30
MEAN	37:27:58	40:33:46	26:54:37	36:54:24	31:37:34	26:00:50	31:46:34	25:43:34	25:50:48	XXX	XXX	XXX	282:50:05



**County of Orange  
Health Care Agency  
Emergency Medical Services**



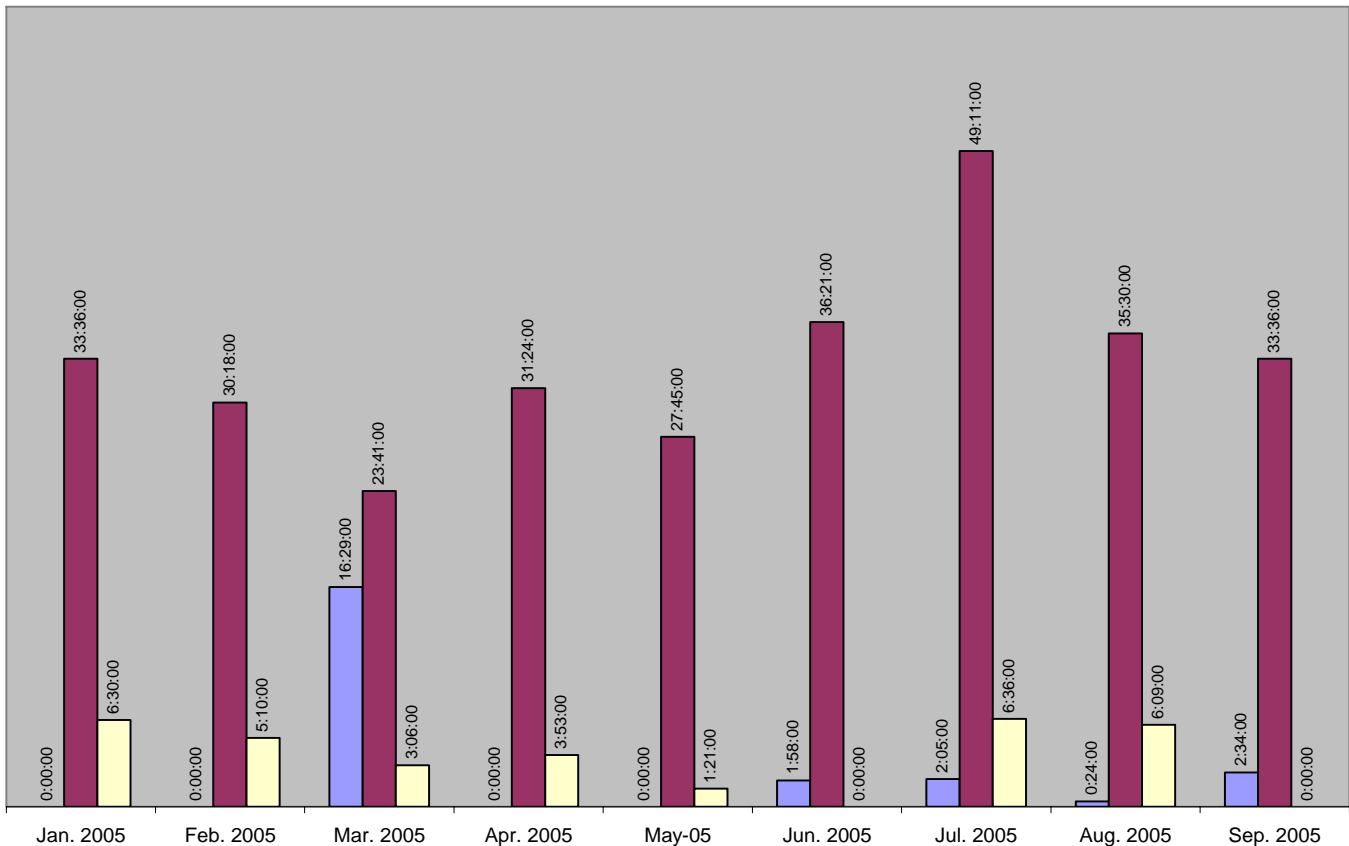
**3rd QUARTER 2005 (JUL. - SEP.) SYSTEM ACTIVITY REPORT**

***Hospital Diversion: Trauma Centers (PTRC)***

This report reflects the total number of hours each Paramedic Trauma Receiving Center requested that ALS ambulances carrying trauma victims be diverted to another PTRC due to system saturation. (See OCEMS policy 310.96). *Data Source: Reddinet*

PTRC	Jan 2005 PTRC Sat	Feb 2005 PTRC Sat	Mar 2005 PTRC Sat	Apr 2005 PTRC Sat	May 2005 PTRC Sat	Jun 2005 PTRC Sat	Jul 2005 PTRC Sat	Aug 2005 PTRC Sat	Sep 2005 PTRC Sat	Oct 2005 PTRC Sat	Nov 2005 PTRC Sat	Dec 2005 PTRC Sat	2005 YTD PTRC Sat
Mission Hospital	0:00:00	0:00:00	16:29:00	0:00:00	0:00:00	1:58:00	2:05:00	0:24:00	2:34:00	XXX	XXX	XXX	23:30:00
UCIMC	33:36:00	30:18:00	23:41:00	31:24:00	27:45:00	36:21:00	49:11:00	35:30:00	33:36:00	XXX	XXX	XXX	301:22:00
WMC-Santa Ana	6:30:00	5:10:00	3:06:00	3:53:00	1:21:00	0:00:00	6:36:00	6:09:00	0:00:00	XXX	XXX	XXX	32:45:00
<b>TOTAL</b>	40:06:00	35:28:00	43:16:00	35:17:00	29:06:00	38:19:00	57:52:00	42:03:00	36:10:00	XXX	XXX	XXX	357:37:00
Median	6:30:00	5:10:00	16:29:00	3:53:00	1:21:00	1:58:00	6:36:00	6:09:00	2:34:00	XXX	XXX	XXX	0:00:00
Mean	13:22:00	11:49:20	14:25:20	11:45:40	9:42:00	12:46:20	19:17:20	14:01:00	12:03:20	XXX	XXX	XXX	119:12:20

■ Mission Hospital    
 ■ UCIMC    
 ■ WMC-Santa Ana





County of Orange  
Health Care Agency  
Emergency Medical Services



3rd QUARTER 2005 (JUL. - SEP.) SYSTEM ACTIVITY REPORT

GLOSSARY of Terms and Abbreviations

<b>ALS</b>	<u>Advanced Life Support.</u> Services designed to provide definitive prehospital emergency medical care, administered by authorized personnel under the direct supervision of a base hospital as part of a local EMS system, at the scene of an emergency, during transport to an acute care hospital, during interfacility transfer, and while in the emergency department of an acute care hospital until responsibility is assumed by the emergency or other medical staff of that hospital.
<b>Airway Problems</b>	Initial Assessment Codes A___. This category identifies patients with airway problems including croup, epiglottitis, laryngospasm, injuries, aspirated emesis, and obstructions due to a foreign body.
<b>Air Ambulance</b>	Any aircraft specially constructed, modified or equipped and used for the primary purposes of responding to emergency calls and transporting critically ill or injured patients whose medical flight crew has at a minimum two (2) attendants certified or licensed in advanced life support. (REFERENCE: CALIFORNIA CODE OF REGULATIONS, TITLE 22, CHAPTER 8, SECTION 100280)
<b>Air Rescue Aircraft</b>	An aircraft whose usual function is not prehospital emergency patient transport but which may be utilized, in compliance with local EMS policy, for prehospital emergency patient transport when use of an air or ground ambulance is inappropriate or unavailable.
<b>ALS No-Contact</b>	ALS interventions which the paramedic can perform in the absence of on-line medical control. (REFERENCE: OCEMS TREATMENT GUIDELINE I-40.)
<b>ALS Provider</b>	An agency approved to provide ALS-level care.
<b>AMA</b>	<u>Against Medical Advice.</u> Patient left against the advice of medical staff, but with their knowledge.
<b>Base Hospital</b>	A paramedic receiving hospital, staffed with a Mobile Intensive Care Nurse (MICN) and Base Physician and equipped with radio equipment, which provides on-line medical support to assist paramedics in the care of a patient. Provides retrospective medical control through quality improvement activities, and offers training and education to ALS providers.



County of Orange  
Health Care Agency  
Emergency Medical Services



3rd QUARTER 2005 (JUL. - SEP.) SYSTEM ACTIVITY REPORT

Glossary: (Continued)

<b>BHR</b>	<i>Base Hospital Report.</i> A standardized form on which Base Hospital personnel (MICN's) document the assessment and care of patients, including response to treatment, performed by paramedics in the prehospital setting.
<b>BLS</b>	<i>Basic Life Support.</i> Emergency first aid and cardiopulmonary resuscitation procedures to maintain life without invasive techniques until the victim may be transported or until advanced life support is available.
<b>BLS Provider</b>	An agency approved to provide BLS-level care.
<b>Breathing Problems</b>	Initial Assessment codes B__. This category identifies patients with breathing problems including asthma, emphysema (COPD), congestive heart failure (CHF), pulmonary edema, pneumonia, smoke inhalation, and chest injuries.
<b>Burn Center</b>	A hospital holding a permit from the Department of Health Services which is committed to provide specialty care to burn patients.
<b>Circulatory Problems</b>	Initial Assessment codes C__. This category identifies patients with circulatory-related problems including syncope, anaphylaxis, angina, possible myocardial infarction (R/O MI), internal bleeding (including GI bleeding), aneurysm, dysrhythmia, hypovolemia and cardiogenic shock
<b>CSO</b>	<i>Comprehensive Standing Orders.</i> An expanded scope of practice in which paramedics can perform ALS interventions in the absence of on-line medical control. Provides additional interventions beyond those included in <i>ALS no-contact</i> . (REFERENCE: TREATMENT GUIDELINE I-40.)
<b>CTV</b>	<i>Critical Trauma Victim.</i> Those patients with obvious, immediate need for paramedic trauma center level care as defined here: A victim of blunt or penetrating trauma, resulting in any of the following physical findings: respirations <12 or >30/minute, pulse <50 or >130/minute, systolic blood pressure <90 (adults) or <70 (pediatric patients); or penetrating injury to the neck, chest or abdomen; or blunt head injury with Glasgow coma score of <12, unequal pupils or focal neurologic deficit; or spinal cord injury with paralysis or paresthesia; or flail chest; or bilateral femur fractures.



County of Orange  
Health Care Agency  
Emergency Medical Services



3rd QUARTER 2005 (JUL. - SEP.) SYSTEM ACTIVITY REPORT

Glossary: (Continued)

<b>Delicate CNS</b>	Initial Assessment codes D__. This category identifies patients with alteration in (central nervous system) neurological status, including seizures (non-febrile), CVA (cerebrovascular accident) or TIA (transient ischemic attack), head trauma, spine injury, alcohol / drug / overdose related problems, anxiety and psychiatric issues.
<b>Diversion</b>	A request by hospitals to temporarily close to ambulance-transported patients. Permitted reasons are: emergency department resources are totally committed; neuro services unavailable; trauma services unavailable; CT scanner unavailable; an internal problem affecting the physical plant (fire, electrical outage, flooding etc). (REFERENCE: OCEMS POLICY #670.10.)
<b>DOA</b>	<u>Dead On Arrival.</u> The patient has no blood pressure, no respiratory rate, and no heart rate on arrival to the ED. For Orange County, patients with these vital signs are considered dead on arrival regardless of treatments they may received in the ED.
<b>External Soft Tissue</b>	Initial Assessment codes E__. This category identifies patients with injuries including skin wounds, all types of burns, bites or stings, eye injury, and crush injury.
<b>GI / GU</b>	Initial Assessment codes G__. This category identifies patients with gastrointestinal or genitourinary-related problems, including abdominal pain, flank/groin pain, or injury to either of these two systems.
<b>IFT</b>	<u>Interfacility Transfer.</u> Transport of a patient from one acute care facility to another acute care facility for higher level of care. Can be performed by ambulance with BLS personnel, Critical Care Transport ambulance with a Registered Nurse, or by paramedic by accessing the 9-1-1 system if an immediate need to transport.
<b>MICN</b>	<u>Mobile Intensive Care Nurse.</u> A Registered Nurse, who has additional training on EMS protocols and who, in conjunction with the Base Hospital physician, provides on-line medical support to paramedics.
<b>MTV</b>	<u>Moderate Trauma Victim.</u> Those patients with potential need for trauma center level-care. Situations or conditions include: mechanism of injury (ejection, falls >15', auto/pedestrian accidents, bicycle or motorcycle crash >20 mph) and other injuries or conditions, including blunt head injury with loss of consciousness >5 minutes, extremes of age, pregnancy >20 weeks, other



County of Orange  
Health Care Agency  
Emergency Medical Services



3rd QUARTER 2005 (JUL. - SEP.) SYSTEM ACTIVITY REPORT

Glossary: (Continued)

**Multiple System Problems**

Initial Assessment codes H\_\_. This category identifies patients with problems involving more than one body system, including: hyper- or hypotension, sepsis, hyper- or hypoglycemia, cardiopulmonary arrest, trauma, cancer, allergic reactions, medication reactions, and environmental emergencies.

**OB / GYN**

Initial Assessment codes I\_\_ (Obstetrical/Gynecological). This category identifies patients with a pregnancy or gynecological-related problem, including pre-term or normal labor, field delivery, ectopic pregnancy, eclampsia, or sexual assault.

**On-line medical control**

ALS interventions provided under the direction of a physician. May be accomplished by use of radio communications or cellular phone.

**PRC**

Paramedic Receiving Center. A hospital with a permit for basic or comprehensive emergency services which has been designated as a participant in the EMS system by the Orange County EMS Agency.

**Paramedic Resource Hospital**

A hospital that provides retrospective medical control through quality improvement activities and offers training and education to ALS providers. A paramedic resource hospital does not have a paramedic radio and therefore cannot provide on-line medical direction to ALS providers.

**PTRC**

Paramedic Trauma Receiving Center. a.k.a. Trauma Center; A hospital, designated by OCEMS, which is committed to provide specialty care to trauma patients. In general, all patients designated as *critical trauma victims* and the majority of patients designated as *moderate trauma victims* will be transported to a trauma receiving center.

**PCR**

Patient Care Report / Prehospital Care Report. A standardized form on which EMS service providers document the assessment and care of patients, including response to treatment, in the prehospital setting.

**Pediatric Emergency**

Initial Assessment codes J\_\_. This category identifies medical situations of pediatric-age patients (<8 years), including febrile seizure, sudden infant death syndrome (SIDS), normal or distressed newborns, apparent life-threatening events (ALTE), and possible child abuse/neglect.



**County of Orange  
Health Care Agency  
Emergency Medical Services**



**3rd QUARTER 2005 (JUL. - SEP.) SYSTEM ACTIVITY REPORT**

**Glossary: (Continued)**

**ReddiNet**

A computer-based communications system which allows hospitals to share information. Used to post a hospital's open / closed status. Also used during mass casualty incidents for patient assignment and patient tracking.

**Skeletal Injuries**

Initial Assessment codes F\_\_. This category identifies injuries to the skeletal system and includes strains and sprains, fractures, dislocations and amputations.