



**County of Orange
Health Care Agency
Health Disaster Management/Emergency Medical Services
1st Quarter 2006 (JAN. - MAR.) SYSTEM ACTIVITY REPORT**



Table of Contents

Report Distribution..... 1

Introduction..... 2

Central – One Reports (Base Data):

- Transport / Non-Transport and Destination by Facility Type..... 3
- Call Volume by Receiving Center..... 4
- Call Volume by Provider Agency..... 6
- Call Volume by Provider Agency and ALS Unit..... 7
- Call Volume by Base Hospital..... 11
- Patient Assessment / Primary Suspected Problem – Detailed..... 12
- Patient Assessment / Primary Suspected Problem – Condensed..... 14
- Patient Assessment / Primary Suspected Problem – By Age..... 15
- Use of *ALS no-contact* Criteria: by Base Hospital..... 16
- Use of *ALS no contact* Criteria: Patient Assessment / Primary Suspected Problem..... 18
- Trauma Designations..... 20

Other Reports:

- Interfacility Transfers via the 9-1-1 System..... 21
- Hospital Diversion: Emergency Department Saturation..... 22
- Hospital Diversion: Trauma Centers..... 23

Glossary..... 24



**County of Orange
Health Care Agency
Health Disaster Management/Emergency Medical Services
1st Quarter 2006 (JAN. - MAR.) SYSTEM ACTIVITY REPORT**



REPORT DISTRIBUTION

This report is distributed to the following individuals, committee members, groups or other entities:

- Ambulance Association of Orange County
- Base Hospital Coordinators
- Base Hospital Physician Directors
- County Paramedic Advisory Committee (CPAC), Orange County EMS
- Each Orange County Paramedic Receiving Center, Base Hospital, and Specialty Receiving Center
- Emergency Medical Care Committee (EMCC)
- Facilities Advisory Subcommittee (FAC), Orange County EMS
- Fire Paramedic Coordinators
- Health Care Agency
 - ✓ Juliette A. Poulson RN, MN; Agency Director
 - ✓ Terre Duensing, Division Manager, Health Disaster Management
 - ✓ Robert Gates; Project Director, Medical Services for Indigents
 - ✓ Eric Handler, MD; Health Officer, Public Health Services
 - ✓ Mark A. Refowitz, LCSW; Deputy Agency Director, Behavioral Health Services
 - ✓ Mike Spurgeon; Deputy Agency Director, Regulatory Health Services
- Hospital Association of Southern California (HASC)
- Orange County Ground and Air Ambulance Providers
- Orange County Communications
- Orange County Fire Chiefs Association
- Orange County Medical Association (OCMA)
- Orange County Paramedic Training Programs
- Quality Assurance Board (QAB), Orange County EMS
- Regional Paramedic Advisory Committees (RPAC), each Base Hospital
- State EMS Authority (EMSA)

Authorized for distribution:

Samuel J. Stratton
Samuel J. Stratton MD: Medical Director

Gregory L. Boswell
Gregory L. Boswell, RN: Program Manager

Laurent R. Repass
Laurent R. Repass, EMT-P: QI Program Coordinator

Date: 06/11/07



**County of Orange
Health Care Agency
Health Disaster Management/Emergency Medical Services
1st Quarter 2006 (JAN. - MAR.) SYSTEM ACTIVITY REPORT**



Introduction

Orange County EMS (OCEMS) collects data on EMS activity for the purpose of system monitoring and to facilitate continuous quality improvement activities at all levels of the prehospital healthcare delivery system. Data is collected from field providers (paramedics), base hospitals, paramedic receiving centers and trauma centers.

The County of Orange Health Care Agency/Emergency Medical Services Quarterly System Activity Report is generated every three calendar months and reflects system data of interest to all EMS system participants, including hospitals and provider agencies. The quarterly report is actually a series of individual reports and offers a “snapshot” of prehospital emergency medical care in Orange County. Other reports contained herein provide additional insight into Orange County’s medical care system.

Many of the reports contained in this summary are prepared from information obtained from the Base Hospital Report (BHR) and/or the Prehospital Care Report (PCR). All Base Hospitals collect and enter data from those reports into a database tracking system called Central One, designed by Lancet Technology®, Inc., and to submit this information to OCEMS. The System Activity Report does not contain data from other system participants (e.g. , Basic Life Support calls, private critical care ambulance transports, or public service access points).

Data for other reports, such as the Hospital Diversion report is obtained from the ReddiNet® computer system. All paramedic receiving center hospitals are required to have the ReddiNet® system, used primarily for communications between hospitals and for notifying other System participants of the hospital’s open/closed status. The ReddiNet system is also used during mass casualty incidents, whether actual events or planned drills. Reports contained in this quarterly activity report are:

Central-One Reports:

- Transport / Non-Transport and Destination by Facility Type
- Call Volume by Receiving Center
- Call Volume by Provider Agency and ALS Unit
- Call Volume by Base Hospital
- Patient Assessment / Primary Suspected Problem – Detailed
- Patient Assessment / Primary Suspected Problem – Condensed
- Patient Assessment / Primary Suspected Problem – By Age
- Use of ALS no-contact: by Base Hospital
- Use of ALS no-contact: Patient Assessment / Primary Suspected Problem
- Trauma Designations

Other Reports:

- Interfacility Transfers via the 9-1-1 System
- Hospital Diversion: Emergency Department Saturation
- Hospital Diversion: Trauma Centers

Suggestions for additional reports are welcome and should be directed to Greg L. Boswell, RN Program Manager or Samuel J. Stratton, M.D., OCEMS Medical Director.



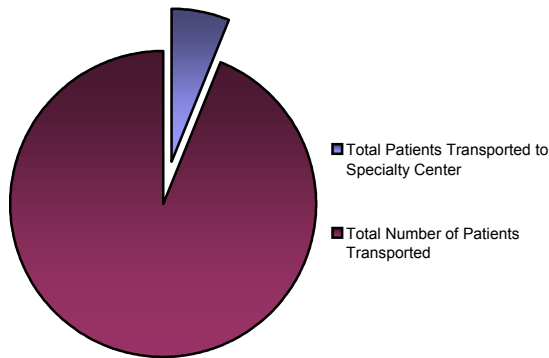
**County of Orange
Health Care Agency
Health Disaster Management/Emergency Medical Services
1st Quarter 2006 (JAN. - MAR.) SYSTEM ACTIVITY REPORT**



Transport / Non-transport and Destination by Facility Type

This report provides a quick overview of the disposition of patients seen by ALS providers (transported and not transported) and entered into the Central-One database. The numbers of patients transported to either a regular paramedic receiving center or to a specialty center are shown; for non-transported patients, the number who are released on scene and/or refuse transport, and those who are dead on scene are listed. Data Source: Central One

Total Number of Patients Transported	13,165	98%
Total transported to PRC (non-specialty center)	12,297	91%
Total Patients Transported to Specialty Center	868	6%
Trauma center	808	6%
Burn center	19	0%
Cardiac Center	41	0%
Total Number of Patients Not Transported	287	2%
Released on scene / refused transport	188	1%
Dead on Scene	99	1%
Total Number of Calls	13,452	100%





**County of Orange
Health Care Agency
Health Disaster Management/Emergency Medical Services
1st Quarter 2006 (JAN. - MAR.) SYSTEM ACTIVITY REPORT**



Call Volume by Receiving Center

This report provides a breakdown of the number of patient transports to each of the approved paramedic receiving centers in Orange County as well as those hospitals outside of Orange County approved to receive OCEMS patients. *Data Source: Central One*

ID#	Receiving Hospital	Total	Percent
1	Anaheim General Hospital	138	1%
2	Anaheim Memorial Medical Center	813	6%
4	Kaiser Foundation - Anaheim	295	2%
5	Chapman Medical Center	150	1%
7	Fountain Valley Regional Medical Center	523	4%
9	Hoag Memorial Hospital - Presbyterian	1,463	11%
10	Huntington Beach Hospital	484	4%
12	La Palma Intercommunity Hospital	166	1%
13	Los Alamitos Medical Center	472	4%
15	Coastal Communities Hospital	142	1%
17	Mission Hospital Regional Medical Center	1,042	8%
19	Garden Grove Hospital and Medical Center	311	2%
20	Placentia Linda Hospital	405	3%
21	SMMC - Laguna Hills	977	7%
22	St. Joseph Hospital	851	6%
23	St. Jude Medical Center	743	6%
24	SMMC - San Clemente	267	2%
25	South Coast Medical Center	192	1%
26	Tustin Hospital and Medical Center	30	0%
27	UCI Medical Center	756	6%
28	West Anaheim Medical Center	598	4%
29	Western Medical Center - Santa Ana	719	5%
30	Western Medical Center - Anaheim	324	2%
34	Long Beach Memorial Medical Center*	103	1%
37	St. Mary Medical Center*	4	0%
38	Orange Coast Memorial Medical Center	470	3%
39	Irvine Regional Medical Center	497	4%
53	Community Hospital of Long Beach*	14	0%
55	Whittier Medical Center*	39	0%
56	Presbyterian Intercommunity Hospital*	13	0%
36	Other	12	0%
60	Release / Signed AMA	188	1%
99	Dead on Scene	99	1%
	Not Documented	152	1%
Total		13,452	100%

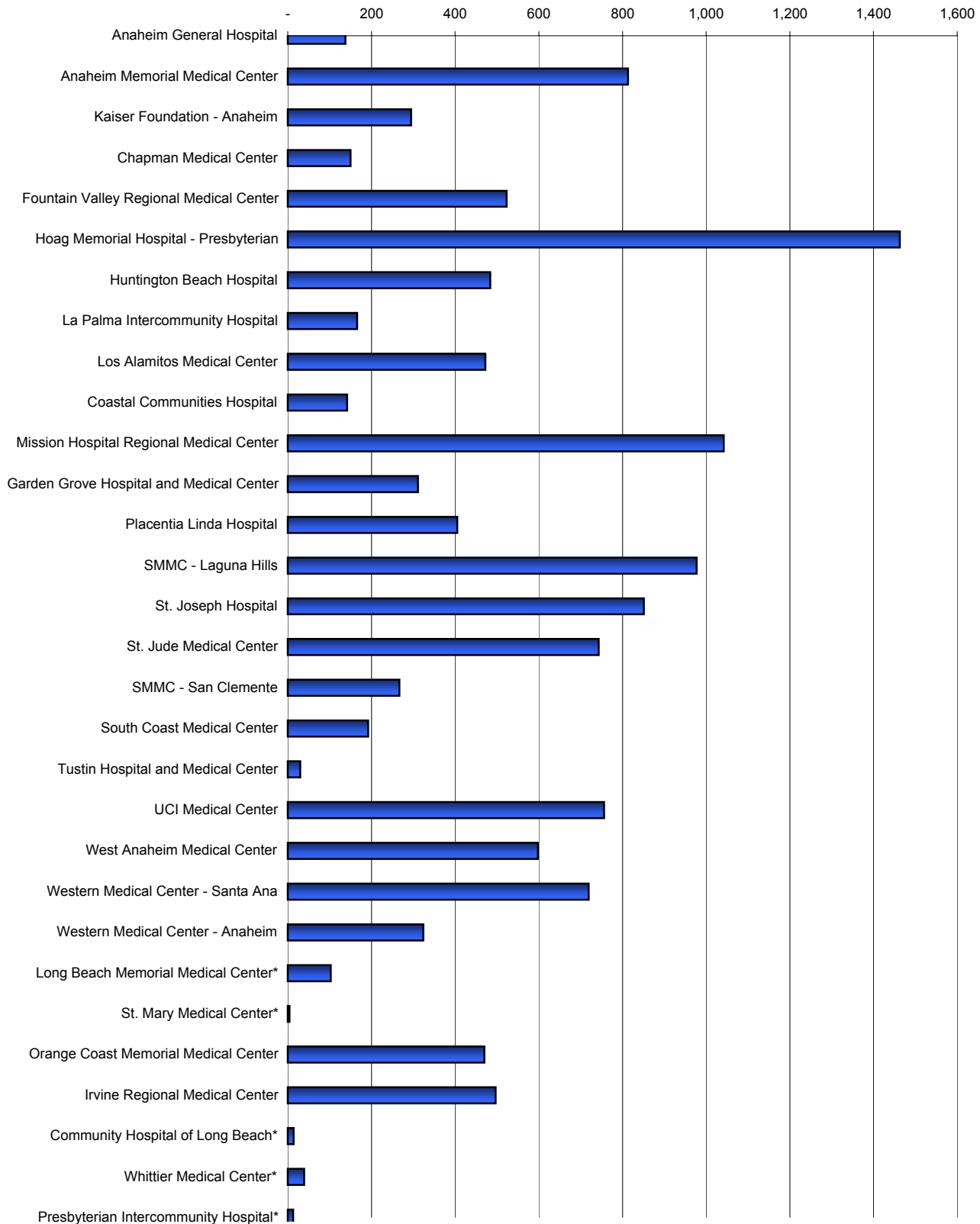
*Hospital located in Los Angeles County



County of Orange
Health Care Agency
Health Disaster Management/Emergency Medical Services
1st Quarter 2006 (JAN. - MAR.) SYSTEM ACTIVITY REPORT



Call Volume by Receiving Center



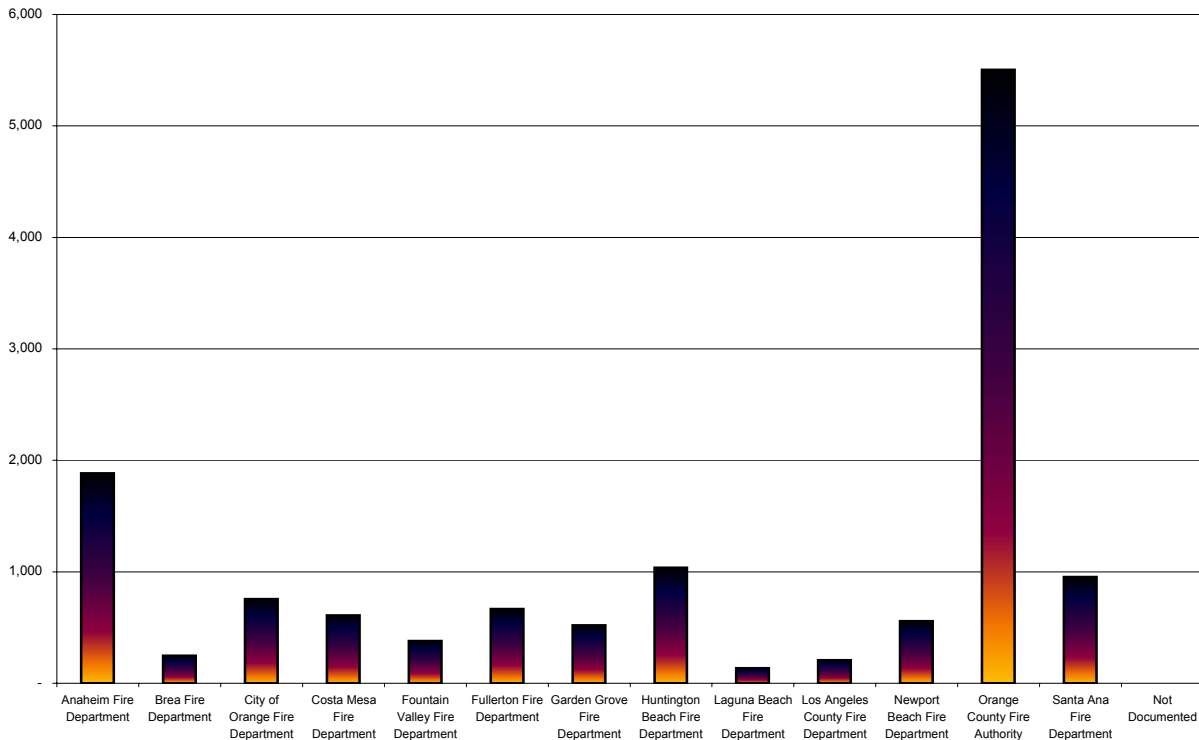


**County of Orange
Health Care Agency
Health Disaster Management/Emergency Medical Services
1st Quarter 2006 (JAN. - MAR.) SYSTEM ACTIVITY REPORT**



ALS Call Volume by EMS Provider Agency

ID #	EMS Provider Agency	Total	Percent
1	Anaheim Fire Department	1,884	14%
2	Brea Fire Department	247	2%
12	City of Orange Fire Department	754	6%
4	Costa Mesa Fire Department	610	5%
5	Fountain Valley Fire Department	378	3%
6	Fullerton Fire Department	666	5%
7	Garden Grove Fire Department	519	4%
8	Huntington Beach Fire Department	1,037	8%
9	Laguna Beach Fire Department	134	1%
21	Los Angeles County Fire Department	208	2%
11	Newport Beach Fire Department	556	4%
13	Orange County Fire Authority	5,504	41%
15	Santa Ana Fire Department	954	7%
	Not Documented	1	0%
Total		13,452	100%





**County of Orange
Health Care Agency
Health Disaster Management/Emergency Medical Services
1st Quarter 2006 (JAN. - MAR.) SYSTEM ACTIVITY REPORT**



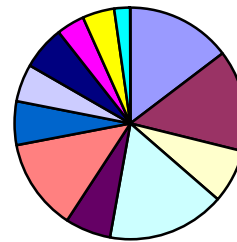
ALS Call Volume by Provider Agency and ALS Unit

This report reflects the number of base contacted, ALS no-contact, and CSO calls for each fire department, by individual ALS unit. Basic Life Support calls are not included in this report.

Data Source: Central One

Anaheim Fire Department			
A1	Anaheim E-1	276	15%
A2	Anaheim E-2	267	14%
A3	Anaheim E-3	140	7%
A4	Anaheim E-4	313	17%
A5	Anaheim E-5	119	6%
A6	Anaheim E-6	239	13%
A7	Anaheim E-7	119	6%
A8	Anaheim E-8	97	5%
A9	Anaheim E-9	117	6%
A10	Anaheim E-10	72	4%
A43	Anaheim Medic 4-3	85	5%
A44	Anaheim Medic 4-4	39	2%
	Anaheim Medic 1-1	1	0%
Total		1,884	100%

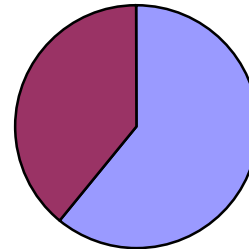
- Anaheim E-1
- Anaheim E-2
- Anaheim E-3
- Anaheim E-4
- Anaheim E-5
- Anaheim E-6
- Anaheim E-7
- Anaheim E-8
- Anaheim E-9
- Anaheim E-10
- Anaheim Medic 4-3
- Anaheim Medic 4-4
- Anaheim Medic 1-1



*All units assigned to Anaheim Memorial (Paramedic Resource Hospital)

Brea Fire Department			
BREA 1	Brea Medic 1	150	61%
BREA 3	Brea Medic 3	97	39%
Total		247	100%

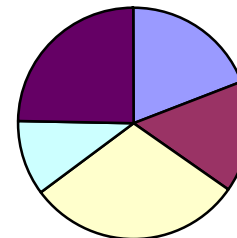
- BREA 1 Brea Medic 1
- BREA 3 Brea Medic 3



*All units assigned to St. Jude Base Hospital

Costa Mesa Fire Department			
M81	Mesa Medic E-81	117	19%
M82	Mesa Medic E-82	95	16%
M83	Mesa Medic E-83	183	30%
M84	Mesa Medic E-84	65	11%
M85	Mesa Medic E-85	150	25%
Total		610	100%

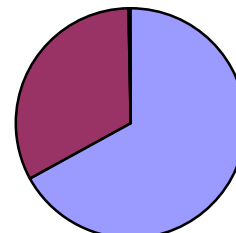
- Mesa Medic E-81
- Mesa Medic E-82
- Mesa Medic E-83
- Mesa Medic E-84
- Mesa Medic E-85



*All units assigned to Hoag Memorial Base Hospital

Fountain Valley Fire Department			
V31	Valley Medic E-31	253	67%
V32	Valley Medic E-32	124	33%
VT31A	Valley Truck 31	1	0%
Total		378	100%

- Valley Medic E-31
- Valley Medic E-32
- Valley Truck 31



*All units assigned to Huntington Beach Base Hospital



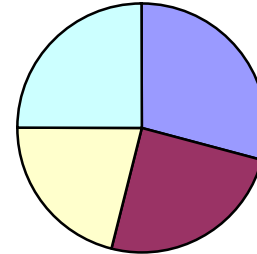
**County of Orange
Health Care Agency
Health Disaster Management/Emergency Medical Services
1st Quarter 2006 (JAN. - MAR.) SYSTEM ACTIVITY REPORT**



ALS Call Volume by Provider Agency and ALS Unit (continued)

Fullerton Fire Department			
F1	Fullerton Medic 1	195	29%
F2	Fullerton Medic 2	163	24%
F4A	Fullerton E-4	142	21%
F5	Fullerton Medic 5	166	25%
Total		666	100%

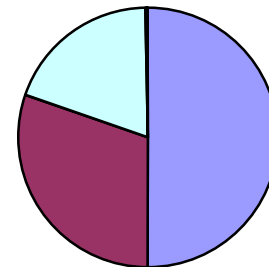
*All units assigned to St. Jude Base Hospital



- Fullerton Medic 1
- Fullerton Medic 2
- Fullerton E-4
- Fullerton Medic 5

Garden Grove Fire Department			
G1	Grove Medic E-1	259	50%
G2	Grove Medic E-2	157	30%
G3A	Grove E-3	1	0%
G5	Grove Medic E-5	101	19%
G7A	Grove E-7	1	0%
Total		519	100%

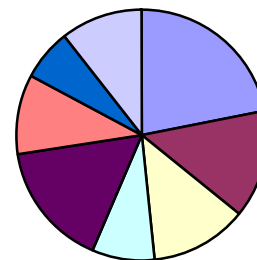
*All units assigned to UCIMC Base Hospital



- Grove Medic E-1
- Grove Medic E-2
- Grove E-3
- Grove Medic E-5
- Grove E-7

Huntington Beach Fire Department			
H41	Huntington Medic E-41	229	22%
H42	Huntington Medic E-42	142	14%
H43	Huntington Medic E-43	130	13%
H44	Huntington Medic E-44	84	8%
H45	Huntington Medic E-45	167	16%
H46	Huntington Medic E-46	107	10%
H47	Huntington Medic E-47	68	7%
H48	Huntington Medic E-48	110	11%
Total		1,037	100%

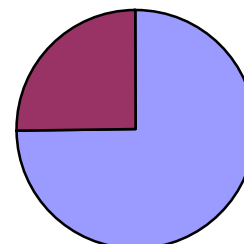
*All units assigned to Huntington Beach Base Hospital



- Huntington Medic E-41
- Huntington Medic E-42
- Huntington Medic E-43
- Huntington Medic E-44
- Huntington Medic E-45
- Huntington Medic E-46
- Huntington Medic E-47
- Huntington Medic E-48

Laguna Beach Fire Department			
L1	Laguna Medic E-1	100	75%
L4	Laguna Medic E-4	34	25%
Total		134	100%

*All units assigned to Hoag Memorial Base Hospital



- Laguna Medic E-1
- Laguna Medic E-4



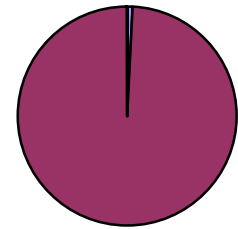
**County of Orange
Health Care Agency
Health Disaster Management/Emergency Medical Services
1st Quarter 2006 (JAN. - MAR.) SYSTEM ACTIVITY REPORT**



ALS Call Volume by Provider Agency and ALS Unit continued

Los Angeles County Fire Department			
LAE191	Los Angeles County E-191	2	1%
LAS191	Los Angeles County Squad 191	206	99%
LAE192	Los Angeles County E-192	0	0%
LAE193	Los Angeles County E-193	0	0%
LAE194	Los Angeles County E-194	0	0%
Total		208	100%

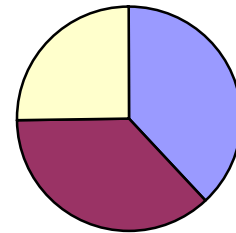
*All units assigned to St. Jude Base Hospital



- Los Angeles County E-191
- Los Angeles County Squad 191
- Los Angeles County E-192
- Los Angeles County E-193
- Los Angeles County E-194

Newport Beach Fire Department			
N62	Newport Medic 62	212	38%
N63	Newport Medic 63	203	37%
N65	Newport Medic 65	141	25%
Total		556	100%

*All units assigned to Hoag Memorial Base Hospital



- Newport Medic 62
- Newport Medic 63
- Newport Medic 65

City of Orange Fire Department			
O1A	Orange E-1	9	1%
O2A	Orange E-2	4	1%
O3A	Orange E-3	25	3%
O4A	Orange E-4	22	3%
O5A	Orange E-5	72	10%
O6A	Orange E-6	5	1%
O7A	Orange E-7	1	0%
O8A	Orange E-8	2	0%
OR3	Orange Rescue 3	192	25%
OR4	Orange Rescue 4	187	25%
OR5	Orange Rescue 5	235	31%
Total		754	100%

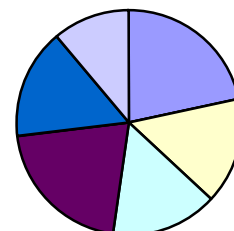
*All units assigned to UCIMC Base Hospital



- Orange E-1
- Orange E-2
- Orange E-3
- Orange E-4
- Orange E-5
- Orange E-6
- Orange E-7
- Orange E-8
- Orange Rescue 3
- Orange Rescue 4
- Orange Rescue 5

Santa Ana Fire Department			
SA1	Santa Ana Medic 1	206	22%
SA2	Santa Ana Medic 2	0	0%
SA3	Santa Ana Medic 3	147	15%
SA4	Santa Ana Medic 4	145	15%
SA5	Santa Ana Medic 5	199	21%
SA6A	Santa Ana Medic 6	1	<1%
SA7	Santa Ana E-7	151	16%
SA8	Santa Ana E-8	105	11%
Total		954	100%

*All units assigned to WestMed - Santa Ana Base Hospital



- Santa Ana Medic 1
- Santa Ana Medic 2
- Santa Ana Medic 3
- Santa Ana Medic 4
- Santa Ana Medic 5
- Santa Ana Medic 6
- Santa Ana E-7
- Santa Ana E-8



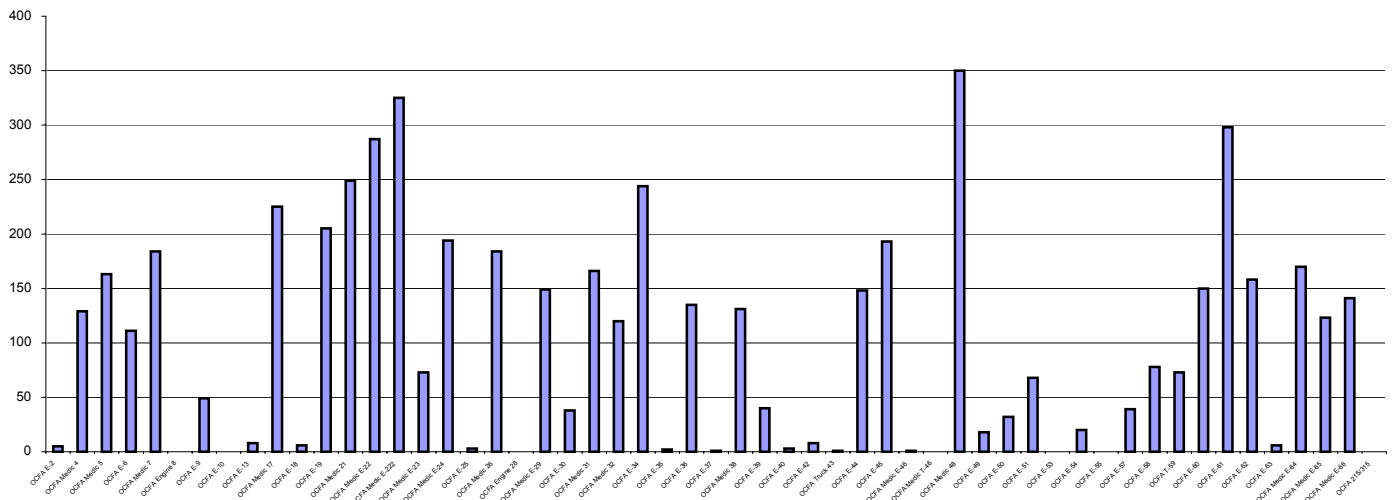
**County of Orange
Health Care Agency
Health Disaster Management/Emergency Medical Services
1st Quarter 2006 (JAN. - MAR.) SYSTEM ACTIVITY REPORT**



ALS Call Volume by Provider Agency and ALS Unit (continued)

Orange County Fire Authority							
2A	OCFA E-2 ⁴	5	0%	38	OCFA Medic 38 ^b	131	2%
4	OCFA Medic 4 ¹	129	2%	39A	OCFA E-39 ^b	40	1%
5	OCFA Medic 5 ^b	163	3%	40A	OCFA E-40 ^b	3	0%
6A	OCFA E-6 ¹	111	2%	42A	OCFA E-42 ^b	8	0%
7	OCFA Medic 7 ^b	184	3%	43A	OCFA Truck 43 ¹	1	0%
8A	OCFA Engine 8 ¹	0	0%	44A	OCFA E-44 ⁴	148	3%
9A	OCFA E-9 ^b	49	1%	45A	OCFA E-45 ^b	193	4%
10A	OCFA E-10 ³	0	0%	46	OCFA Medic E-46 ⁴	1	0%
13A	OCFA E-13 ⁴	8	0%	T46A	OCFA Medic T-46 ⁴	0	0%
17	OCFA Medic 17 ⁴	225	4%	48	OCFA Medic 48 ⁴	350	6%
18A	OCFA E-18 ^b	6	0%	49A	OCFA E-49 ^b	18	0%
19	OCFA E-19 ^b	205	4%	50	OCFA E-50 ^b	32	1%
21	OCFA Medic 21 ¹	249	5%	51	OCFA E-51 ^b	68	1%
22	OCFA Medic E-22 ^b	287	5%	53A	OCFA E-53 ³	0	0%
222	OCFA Medic E-222 ^b	325	6%	54A	OCFA E-54 ^b	20	0%
23	OCFA Medic E-23 ¹	73	1%	55A	OCFA E-55 ^b	0	0%
24	OCFA Medic E-24 ¹	194	4%	57A	OCFA E-57 ^b	39	1%
25A	OCFA E-25 ⁴	3	0%	58	OCFA E-58 ^b	78	1%
26	OCFA Medic 26 ¹	184	3%	59A	OCFA T-59 ^b	73	1%
28A	OCFA Engine 28 ¹	0	0%	60	OCFA E-60 ^b	150	3%
29	OCFA Medic E-29 ^b	149	3%	61	OCFA E-61 ³	298	5%
30A	OCFA E-30 ^b	38	1%	62	OCFA E-62 ³	158	3%
31	OCFA Medic 31 ^b	166	3%	63A	OCFA E-63 ³	6	0%
32	OCFA Medic 32 ³	120	2%	64	OCFA Medic E-64 ⁴	170	3%
34	OCFA E-34 ³	244	4%	65	OCFA Medic E-65 ⁴	123	2%
35A	OCFA E-35 ³	2	0%	66	OCFA Medic E-66 ⁴	141	3%
36A	OCFA E-36 ¹	135	2%	215A	OCFA 215/315	0	0%
37A	OCFA E-37 ¹	1	0%				
Total						5,504	100%

1 Units assigned WestMed - Santa Ana Base Hospital
 3 Units assigned St. Jude Base Hospital
 4 Units assigned Huntington Beach Base Hospital
 6 Units assigned Mission Base Hospital





**County of Orange
Health Care Agency
Health Disaster Management/Emergency Medical Services
1st Quarter 2006 (JAN. - MAR.) SYSTEM ACTIVITY REPORT**

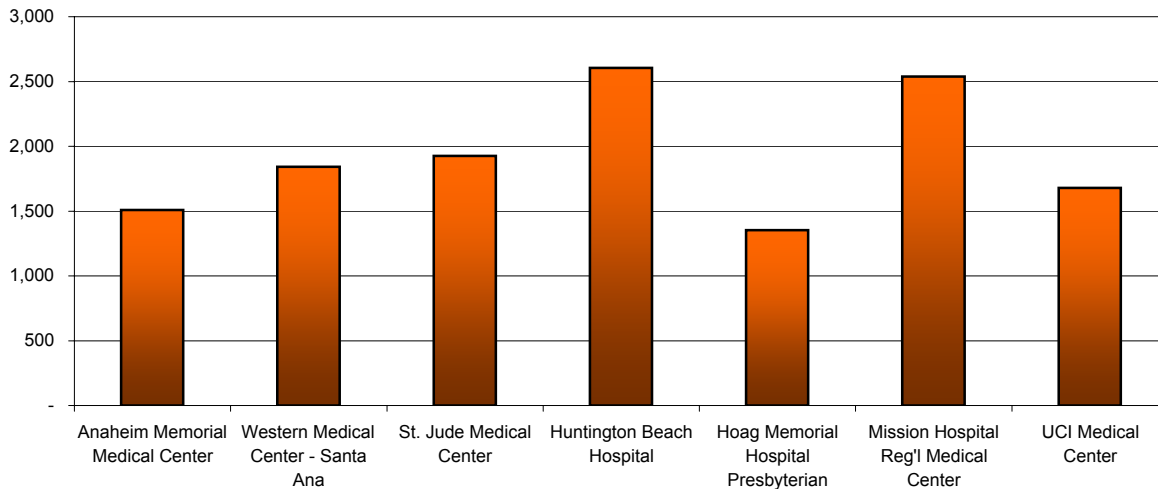


Call Volume by Base Hospital

This report shows the number of calls managed by each of the six Base Hospitals for patient encounters in which paramedics established on-line medical control, as well as those managed under the ALS no-contact criteria. One ALS provider agency operates under an expanded scope termed Comprehensive Standing Orders (CSO); those calls are reflected in the data reported by the one Paramedic Resource Hospital.

Data Source: Central One

ID #	Paramedic Resource Hospital	Total	Percent
2	Anaheim Memorial Medical Center	1,508	11%
ID #	Base Hospital	Total	Percent
1	Western Medical Center - Santa Ana	1,841	14%
3	St. Jude Medical Center	1,925	14%
4	Huntington Beach Hospital	2,605	19%
5	Hoag Memorial Hospital Presbyterian	1,354	10%
6	Mission Hospital Reg'l Medical Center	2,539	19%
7	UCI Medical Center	1,680	12%
Total		13,452	100%





**County of Orange
Health Care Agency
Health Disaster Management/Emergency Medical Services
1st Quarter 2006 (JAN. - MAR.) SYSTEM ACTIVITY REPORT**



ALS Patient Assessment / Primary Suspected Problem - Detailed

When paramedics evaluate a patient, they and the base hospital make a working diagnosis or assessment of the patient's presumed medical problem. This report summarizes the types of medical problems encountered by ALS providers, grouped by general classifications. See the Glossary for additional information. (The alpha-numeric indicator preceding each assessment is the OCEMS-assigned approved coding used when entering information into the Lancet database.) *Data Source: Central One*

ID#	Initial Assessment Category	Total	Percent
Airway Problems		71	1%
A04	Croup / Epiglottitis	18	0%
	All Others	53	0%
Breathing Problems		1,899	14%
B01 / B14	Pulmonary Edema / CHF	399	3%
B02	COPD	350	3%
B03	Asthma	297	2%
	All Others	853	6%
Circulatory Problems		3,566	27%
C01	Syncope	748	6%
C03 / C07	Hypovolemic Shock / Cardiogenic Shock	96	1%
C04	GI Bleeding	167	1%
C08	Angina	960	7%
C09	R/O MI	667	5%
C10	Dysrhythmias	365	3%
C16	STEMI to CVRC	41	0%
	All Others	522	4%
Delicate CNS		3,368	25%
D01	Alcohol-related	187	1%
D02	Seizure (non-febrile)	827	6%
D05 / D06	Overdose / Drug Ingestion	467	3%
D07 / D23	CVA / TIA	759	6%
D12	Head Trauma to PTRC	36	0%
D24	Head Trauma to PRC	69	1%
	All others	1,023	8%
External Soft Tissue		112	1%
E03 / E04 / E05 / E08	Burns (All categories)	18	0%
E12	Burn to Burn Center	19	0%
	All Others	75	1%
Skeletal Injuries		368	3%
F01 / F02 / F03	Suspected Fractures	177	1%
F05	Amputation	8	0%
F06	Strain / Sprain	92	1%
	All Others	91	1%
GI / GU		406	3%
G01 / G02	Abdominal pain	251	2%
G08	Flank / Groin pain	33	0%
	All Others	122	1%



**County of Orange
Health Care Agency
Health Disaster Management/Emergency Medical Services
1st Quarter 2006 (JAN. - MAR.) SYSTEM ACTIVITY REPORT**

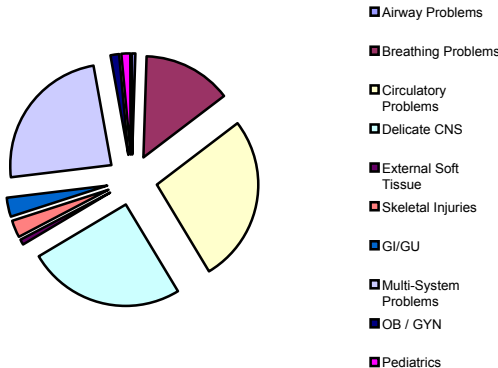


ALS Patient Assessment / Primary Suspected Problem - Detailed (continued)

Multiple System Problems		3,252	24%
H01	Cardiopulmonary Arrest - Medical	362	3%
H04 / H05	Diabetic Related Problem	719	5%
H06	Submersion (drowning / near-drowning)	9	0%
H08	MTV to PRC	75	1%
H09	MTV / CTV to PTRC	743	6%
H10	General Weakness	669	5%
H15	Allergic Reaction	100	1%
H18	Hypotension	163	1%
H20	Cardiopulmonary Arrest - Traumatic	10	0%
	All Others	402	3%
OB / GYN		166	1%
I01	Vaginal Bleeding	43	0%
I04 / I05 / I07 / I11	Other OB-related	72	1%
I06	Normal Field Delivery	3	0%
	All Others	48	0%
Pediatric		192	1%
J01	Suspected SIDS	6	0%
J03 / J04	Newborn	6	0%
J07	Febrile Seizure	137	1%
	All Others	43	0%
	Initial Assessments/Not Documented/Blank	52	0%
Total		13,452	100%

Patient Assessment /Primary Suspected Problem - By Category

ID	Assessment Category	Total	Percent
A	Airway Problems	71	1%
B	Breathing Problems	1,899	14%
C	Circulatory Problems	3,566	27%
D	Delicate CNS	3,368	25%
E	External Soft Tissue	112	1%
F	Skeletal Injuries	368	3%
G	GI/GU	406	3%
H	Multi-System Problems	3,252	24%
I	OB / GYN	166	1%
J	Pediatrics	192	1%
Total		13,452	100%





**County of Orange
Health Care Agency
Health Disaster Management/Emergency Medical Services
1st Quarter 2006 (JAN. - MAR.) SYSTEM ACTIVITY REPORT**

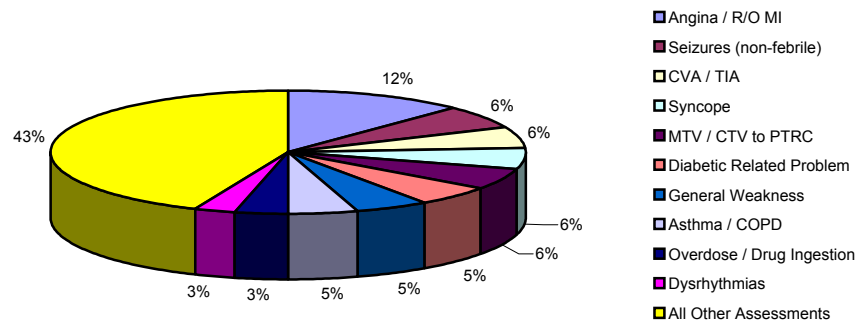


ALS Patient Assessment / Primary Suspected Problem - Condensed

This report summarizes the general assessment categories and the most frequently used specific initial assessment for all patient encounters (ALS Assessment, Base Hospital Contacted, ALS No-Contact Criteria, and Comprehensive Standing Orders "CSO"). *Data Source: Central One*

	ID#	Initial Assessment	Total	Percent
1	C08 / C09	Angina / R/O MI	1,627	12%
2	D02	Seizures (non-febrile)	827	6%
3	D07 / D23	CVA / TIA	759	6%
4	C01	Syncope	748	6%
5	H09	MTV / CTV to PTRC	743	6%
6	H04 / H05	Diabetic Related Problem	719	5%
7	H10	General Weakness	669	5%
8	B02 / B03	Asthma / COPD	647	5%
9	D05 / D06	Overdose / Drug Ingestion	467	3%
10	C10	Dysrhythmias	365	3%
		All Other Assessments	5,881	44%
Total			13,452	100%

Patient Assessment





**County of Orange
Health Care Agency
Health Disaster Management/Emergency Medical Services
1st Quarter 2006 (JAN. - MAR.) SYSTEM ACTIVITY REPORT**



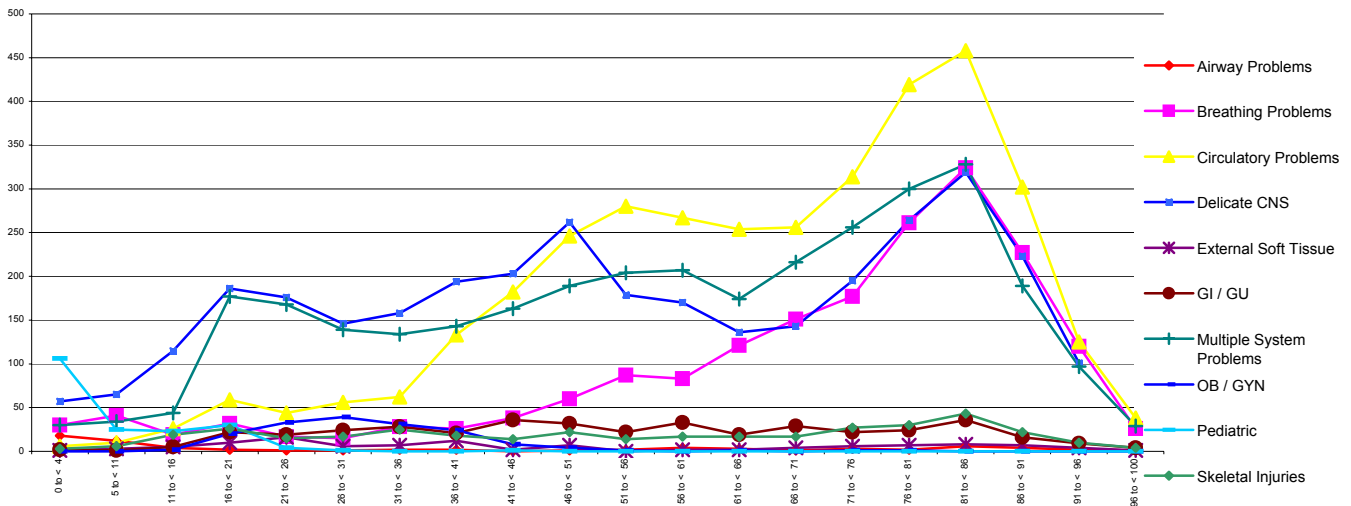
ALS Patient Assessment / Primary Suspected Problem – By Age

This report summarizes the most frequently used specific initial assessment for all patient encounters (ALS Assessment, Base Hospital Contacted, ALS No-Contact Criteria, and Comprehensive Standing Orders “CSO”) and categorizes them by the patient’s age (in years). **Note: Totals do not include “Blank” and “Not Documented” items.**

Data Source: Central One

Assessment Category	0 to < 4	5 to < 11	11 to < 16	16 to < 21	21 to < 26	26 to < 31	31 to < 36	36 to < 41	41 to < 46	46 to < 51
Airway Problems	18	12	4	2	1	1	2	2	0	1
Breathing Problems	30	41	19	32	17	15	28	26	38	60
Circulatory Problems	6	10	26	59	44	56	62	133	182	246
Delicate CNS	57	65	115	186	176	146	158	194	203	262
External Soft Tissue	1	3	5	10	16	6	7	12	2	7
GI / GU	2	1	5	22	19	24	28	21	36	32
Multiple System Problems	30	34	44	177	168	139	134	143	163	189
OB / GYN	0	0	2	20	33	39	31	24	8	4
Pediatric	106	25	23	30	4	1	0	0	1	0
Skeletal Injuries	3	6	19	26	15	17	25	18	14	22
Total	253	197	262	564	493	444	475	573	647	823
Percent of Total Volume	2%	1%	2%	4%	4%	3%	4%	4%	5%	6%

Assessment Category	51 to < 56	56 to < 61	61 to < 66	66 to < 71	71 to < 76	76 to < 81	81 to < 86	86 to < 91	91 to < 96	96 to < 100
Airway Problems	280	267	254	256	314	419	458	302	125	38
Breathing Problems	179	170	136	143	195	264	319	223	101	44
Circulatory Problems	204	207	174	216	256	300	328	189	97	29
Delicate CNS	87	83	121	151	177	261	324	227	120	26
External Soft Tissue	22	33	19	29	22	24	36	16	9	4
GI / GU	14	17	17	17	27	30	43	22	10	4
Multiple System Problems	0	0	0	0	0	0	0	0	0	0
OB / GYN	1	0	1	0	1	1	0	0	0	0
Pediatric	0	2	2	4	6	7	8	7	4	1
Skeletal Injuries	2	4	3	1	3	2	6	4	2	1
Total	789	783	727	817	1,001	1,308	1,522	990	468	147
Percent of Total Volume	6%	6%	5%	6%	7%	10%	11%	7%	3%	1%





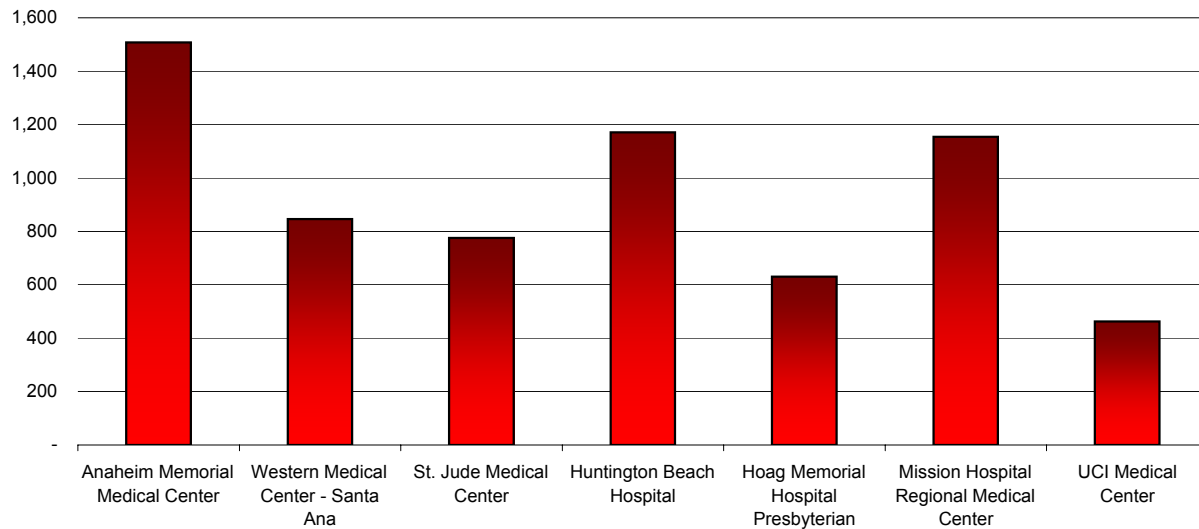
**County of Orange
Health Care Agency
Health Disaster Management/Emergency Medical Services
1st Quarter 2006 (JAN. - MAR.) SYSTEM ACTIVITY REPORT**



Use of ALS No-Contact Criteria: By Base Hospital

This report shows the frequency of use of ALS No-Contact criteria by paramedics assigned to each Base Hospital. (See OCEMS Treatment Guideline I-40 for specific criteria). *Data Source: Central One*

ID #	Paramedic Resource Hospital	Total	Percent
2	Anaheim Memorial Medical Center	1,508	23%
ID #	Base Hospital	Total	Percent
1	Western Medical Center - Santa Ana	846	13%
3	St. Jude Medical Center	776	12%
4	Huntington Beach Hospital	1,171	18%
5	Hoag Memorial Hospital Presbyterian	630	10%
6	Mission Hospital Regional Medical Center	1,154	18%
7	UCI Medical Center	463	7%
Total (ALS No-Contact Calls Only)		5,040	77%
Total (ALS No-Contact and CSO)		6,548	100%





**County of Orange
Health Care Agency
Health Disaster Management/Emergency Medical Services
1st Quarter 2006 (JAN. - MAR.) SYSTEM ACTIVITY REPORT**



Use of ALS No-Contact Criteria: Patient Assessment/Primary Suspected Problem

This report shows the general assessment category and the most frequently used specific initial assessments when paramedics use ALS no-contact criteria. This report does not include use of Comprehensive Standing Orders (CSO).

Data Source: Central One

ID#	Initial Assessment Category	Total	Percent
Airway Problems		29	1%
A04	Croup / Epiglottitis	9	0%
	All Others	20	0%
Breathing Problems		584	12%
B01 / B14	Pulmonary Edema / CHF	46	1%
B02	COPD	78	2%
B03	Asthma	86	2%
	All Others	374	7%
Circulatory Problems		1,159	23%
C01	Syncope	436	9%
C04	GI Bleeding	79	2%
C07	Hypovolemic Shock	17	0%
C08	Angina	269	5%
C09	R/O MI	22	0%
C10	Dysrhythmias	75	1%
	All Others	261	5%
Delicate CNS		1,610	32%
D01	Alcohol-related	112	2%
D02	Seizure (non-febrile)	379	8%
D05 / D06	Overdose / drug ingestion	234	5%
D07 / D23	CVA / TIA	413	8%
D24	Head trauma to PRC	22	0%
	All others	450	9%
External Soft Tissue		59	1%
E01	Burns (All categories)	49	1%
	All Others	10	0%
Skeletal Injuries		194	4%
F01 / F02 / F03	Suspected fractures	97	2%
F06	Strain / Sprain	64	1%
	All Others	33	1%
GI / GU		230	5%
G01 / G02	Abdominal pain	157	3%
G08	Flank / Groin Pain	7	0%
	All Others	66	1%
Multiple System Problems		1,006	20%
H01	Cardiopulmonary Arrest - Medical	3	0%
H20	Cardiopulmonary Arrest - Traumatic	1	0%
H03	Hypertension Crisis (DBP >120)	9	0%
H04 / H05	Diabetic Condition (Hyper or Hypo)	368	7%
H08	MTV to PRC	11	0%
H09	MTV / CTV to PTRC	3	0%
H10	General Weakness	412	8%
H15	Allergic Reaction	25	0%
H18	Hypotension (Unknown Etiology)	6	0%
	All Others	168	3%



**County of Orange
Health Care Agency
Health Disaster Management/Emergency Medical Services
1st Quarter 2006 (JAN. - MAR.) SYSTEM ACTIVITY REPORT**



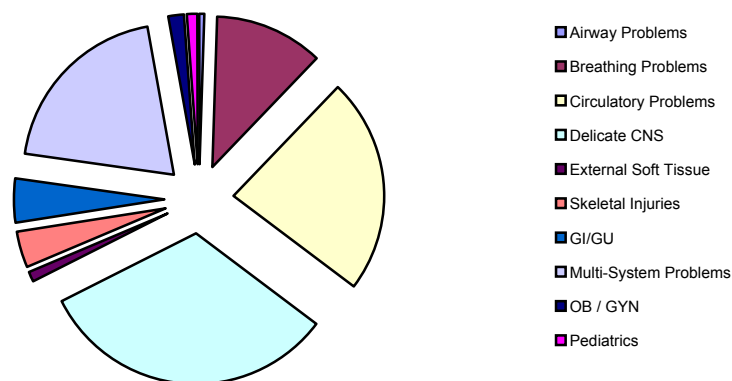
Use of ALS No-Contact Criteria: Patient Assessment/Primary Suspected Problem (continued)

OB / GYN		88	2%
I01	Vaginal Bleeding	22	0%
I04 / I05 / I07 / I11	Other OB-related	42	1%
I06	Field Delivery	1	0%
	All Others	23	0%
Pediatric		50	1%
J01	Suspected SIDS	1	0%
J03 / J04	Newborn	1	0%
J07	Febrile seizure	40	1%
	All Others	8	0%
	ALS No Contact IA Not Documented	31	1%
	Total	5,040	100%

Initial Assessments Condensed

ALS No Contact Patient Assessment/Primary Suspected Problem: by Category

ID	Assessment Category	Total	Percent
A	Airway Problems	29	1%
B	Breathing Problems	584	12%
C	Circulatory Problems	1,159	23%
D	Delicate CNS	1,610	32%
E	External Soft Tissue	59	1%
F	Skeletal Injuries	194	4%
G	GI/GU	230	5%
H	Multi-System Problems	1,006	20%
I	OB / GYN	88	2%
J	Pediatrics	50	1%
	Total	5,040	100%





County of Orange
Health Care Agency
Health Disaster Management/Emergency Medical Services
1st Quarter 2006 (JAN. - MAR.) SYSTEM ACTIVITY REPORT

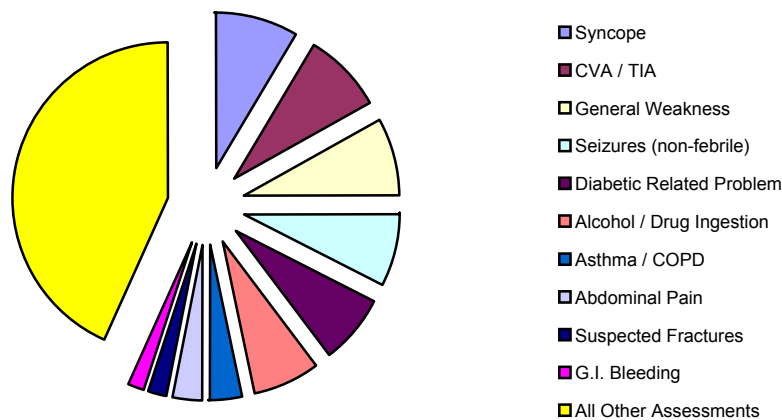


By Assessment Category

ALS No-Contact Criteria by Top Ten Assessment Categories

ID#	Initial Assessment	Total	Percent
1	C01 Syncope	436	9%
2	D07 / D23 CVA / TIA	413	8%
3	H10 General Weakness	412	8%
4	D02 Seizures (non-febrile)	379	8%
5	H04 / H05 Diabetic Related Problem	368	7%
6	D01 / D05 / D06 Alcohol / Drug Ingestion	346	7%
7	B02 / B03 Asthma / COPD	164	3%
8	G01 / G02 Abdominal Pain	157	3%
9	F01 / F02 / F03 Suspected Fractures	97	2%
10	C04 G.I. Bleeding	79	2%
	All Other Assessments	2,189	43%
	Total	5,040	100%

Initial Assessment Categories





**County of Orange
Health Care Agency
Health Disaster Management/Emergency Medical Services
1st Quarter 2006 (JAN. - MAR.) SYSTEM ACTIVITY REPORT**



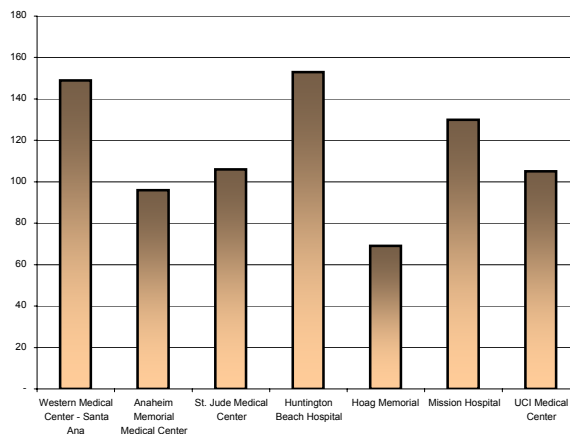
Trauma Designations

Patients sustaining either penetrating or blunt-force injuries meeting specified criteria are classified as either a critical trauma victim (CTV) or a moderate trauma victim (MTV) and are triaged to a specialty hospital approved by OCEMS to evaluate and treat these types of patients. (See OCEMS policy 310.30). *NOTE: THIS REPORT IS GENERATED ON DATA ENTERED INTO THE CENTRAL ONE DATABASE, NOT TRAUMA ONE.* This multi-part report summarizes:

Trauma designations per Base Hospital / Paramedic Resource Hospital

The number of ALS patients meeting trauma criteria designated by each base hospital and transported to a PTRC.

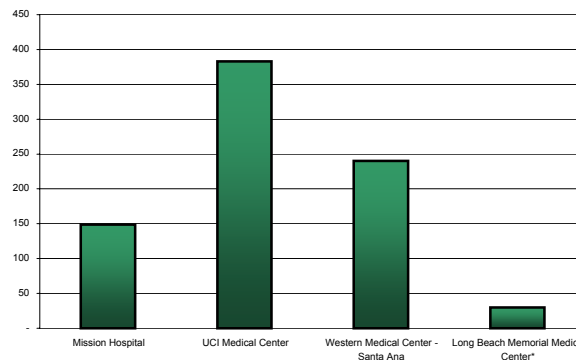
Base Hospital	Total	Percent
Western Medical Center - Santa Ana	149	18%
Anaheim Memorial Medical Center	96	12%
St. Jude Medical Center	106	13%
Huntington Beach Hospital	153	19%
Hoag Memorial	69	9%
Mission Hospital	130	16%
UCI Medical Center	105	13%
Total	808	100%



Designated trauma patients received at each Paramedic Trauma Receiving Center (PTRC)

The number of trauma patients received by each of the three Orange County trauma hospitals and one trauma hospital in LA County approved to receive OC EMS trauma patients.

Receiving Trauma Center	Total	Percent
Mission Hospital	149	18%
UCI Medical Center	383	47%
Western Medical Center - Santa Ana	240	30%
Long Beach Memorial Medical Center*	30	4%
No Transport / Released Signed	4	0%
Dead on Scene / Other	2	0%
Total	808	100%

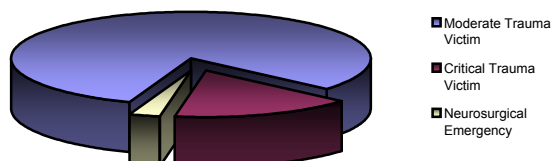


*Hospital is located in Los Angeles County

Categories / types of designated trauma patients directed to a PTRC

The general classifications or types of trauma patients, designated by the base hospitals for transport to a PTRC. (* Not Documented cases not included in overall percentage calculations.)

Trauma Patient Classification	Total	Percent
Moderate Trauma Victim	654	81%
Critical Trauma Victim	132	16%
Neurosurgical Emergency	22	3%
Total	808	100%





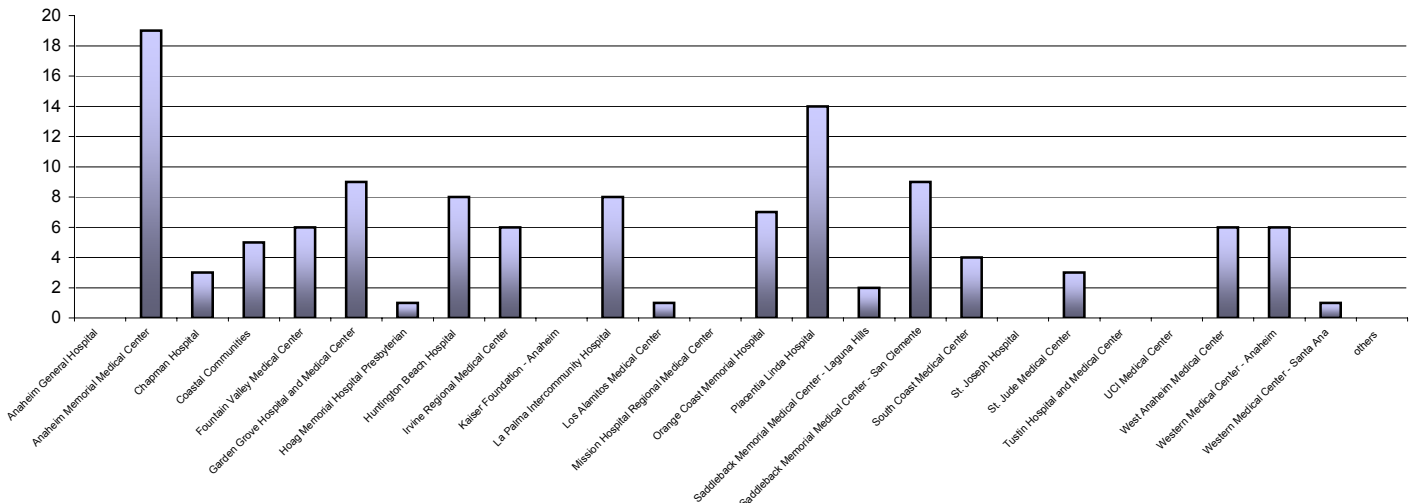
**County of Orange
Health Care Agency
Health Disaster Management/Emergency Medical Services
1st Quarter 2006 (JAN. - MAR.) SYSTEM ACTIVITY REPORT**



Interfacility Transfers via the 9-1-1 System

This report lists the number of occasions in which paramedic receiving centers accessed the 9-1-1 system to utilize paramedics to monitor and escort patients to another acute care hospital for higher level of care, listed by sending facility and reason for transfer. (See OCEMS policy 670.10.) NOTE: INTERFACILITY TRANSFERS ARE ONLY PERFORMED AFTER THE PATIENT HAS BEEN MEDICALLY EVALUATED AND A PHYSICIAN HAS DETERMINED THAT THE PATIENT REQUIRES A SERVICE NOT AVAILABLE AT THE INITIAL FACILITY. FEDERAL TRANSFER GUIDELINES APPLY.

ID #	Paramedic Receiving Center	Total	IFT	CC	neuro-M	neuro-T	trauma	cardiac	vascular	OB	burn	peds	other
01	Anaheim General Hospital	0											
02	Anaheim Memorial Medical Center	19	19		3	11	5						
05	Chapman Hospital	3	3					2		1			
15	Coastal Communities	5	5			1	3	1					
07	Fountain Valley Medical Center	6	6		4	1	1						
19	Garden Grove Hospital and Medical Center	9	9		3	1	4		1				
09	Hoag Memorial Hospital Presbyterian	1	1				1						
10	Huntington Beach Hospital	8	5	3	1		4	1			2		
39	Irvine Regional Medical Center	6	6		1	2	3						
04	Kaiser Foundation - Anaheim	0											
12	La Palma Intercommunity Hospital	8	8		4	2	2						
13	Los Alamitos Medical Center	1		1					1				
17	Mission Hospital Regional Medical Center	0											
38	Orange Coast Memorial Hospital	7	7		2	1	2		1				ortho
20	Placentia Linda Hospital	14	13	1	6	1	3	2	1				ENT
21	Saddleback Memorial Medical Center - Laguna Hills	2	2			1	1						
24	Saddleback Memorial Medical Center - San Clemente	9	8	1	2		2	4	1				
25	South Coast Medical Center	4	3	1		2	1	1					
22	St. Joseph Hospital	0											
23	St. Jude Medical Center	3	3				3						
26	Tustin Hospital and Medical Center	0											
27	UCI Medical Center	0											
28	West Anaheim Medical Center	6	6		3	1	2						
30	Western Medical Center - Anaheim	6	6		4		2						
29	Western Medical Center - Santa Ana	1	1		1								
	others	0											
Total		118	111	7	34	24	39	11	5	3	0	0	2
Percent		100%	94%	6%	29%	20%	33%	9%	4%	3%	0%	0%	2%





**County of Orange
Health Care Agency**

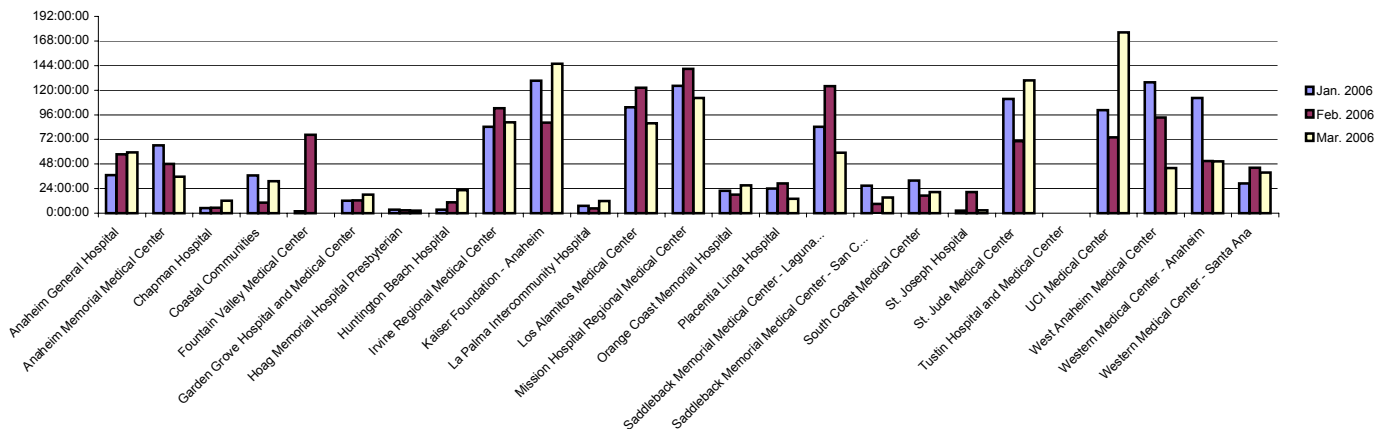


**Health Disaster Management/Emergency Medical Services
1st Quarter 2006 (JAN. - MAR.) SYSTEM ACTIVITY REPORT
Hospital Diversion: Emergency Department Saturation**

This report reflects the total number of hours each paramedic receiving center requested that BLS and ALS ambulances be diverted to another acute care hospital due to Emergency Department Saturation.
(See OCEMS policy 310.96). *Data Source: Reddinet*

NOTE: HOSPITALS COULD STILL RECEIVE BLS / ALS PATIENTS WHILE REQUESTING DIVERSION

ID #	Paramedic Receiving Center	Jan. 2006	Feb. 2006	Mar. 2006	Total to Date
01	Anaheim General Hospital	37:18:00	57:29:00	59:13:00	154:00:00
02	Anaheim Memorial Medical Center	66:10:00	48:04:00	35:38:00	149:52:00
05	Chapman Hospital	5:04:00	5:27:00	12:02:00	22:33:00
15	Coastal Communities	36:54:00	10:10:00	31:14:00	78:18:00
07	Fountain Valley Medical Center	1:45:00	76:38:00	0:00:00	78:23:00
19	Garden Grove Hospital and Medical Center	12:02:00	12:33:00	18:00:00	42:35:00
09	Hoag Memorial Hospital Presbyterian	3:18:00	2:41:00	2:21:00	8:20:00
10	Huntington Beach Hospital	3:32:00	10:32:00	22:37:00	36:41:00
39	Irvine Regional Medical Center	84:18:00	102:25:00	88:46:00	275:29:00
04	Kaiser Foundation - Anaheim	129:19:00	88:26:00	145:47:00	363:32:00
12	La Palma Intercommunity Hospital	7:07:00	4:42:00	11:44:00	23:33:00
13	Los Alamitos Medical Center	103:26:00	122:19:00	87:51:00	313:36:00
17	Mission Hospital Regional Medical Center	124:14:00	140:50:00	112:32:00	377:36:00
38	Orange Coast Memorial Hospital	21:59:00	18:06:00	3:02:00	67:07:00
20	Placentia Linda Hospital	24:09:00	29:11:00	13:54:00	67:14:00
21	Saddleback Memorial Medical Center - Laguna Hills	84:22:00	123:53:00	58:59:00	267:14:00
24	Saddleback Memorial Medical Center - San Clemente	26:42:00	8:59:00	15:27:00	51:08:00
25	South Coast Medical Center	31:47:00	17:08:00	20:32:00	69:27:00
22	St. Joseph Hospital	2:22:00	20:30:00	2:57:00	25:49:00
23	St. Jude Medical Center	111:26:00	70:15:00	129:41:00	311:22:00
26	Tustin Hospital and Medical Center	0:00:00	0:00:00	0:00:00	0:00:00
27	UCI Medical Center	100:40:00	74:02:00	176:26:00	351:08:00
28	West Anaheim Medical Center	127:40:00	93:30:00	43:52:00	265:02:00
30	Western Medical Center - Anaheim	112:28:00	50:55:00	50:27:00	213:50:00
29	Western Medical Center - Santa Ana	28:56:00	44:29:00	39:38:00	113:03:00
Total		1286:58:00	1233:14:00	1206:40:00	3726:52:00
Median		31:47:00	44:29:00	31:14:00	107:30:00
Mean		51:28:43	49:19:46	48:16:00	149:04:29





County of Orange
Health Care Agency
Health Disaster Management/Emergency Medical Services
1st Quarter 2006 (JAN. - MAR.) SYSTEM ACTIVITY REPORT



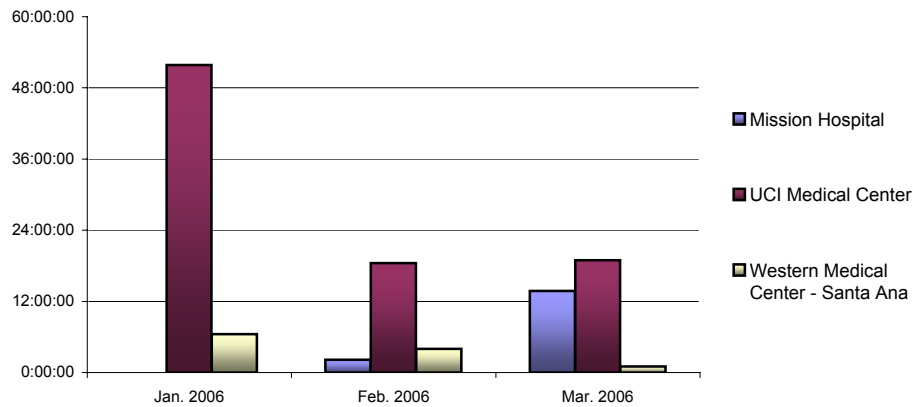
Hospital Diversion: Trauma Centers (PTRC)

This report reflects the total number of hours each Paramedic Trauma Receiving Center requested that ALS ambulances carrying trauma victims be diverted to another PTRC due to hospital trauma services saturation.

(See OCEMS policy 310.96). *Data Source: Reddinet*

ID #	Paramedic Trauma Center	Jan. 2006	Feb. 2006	Mar. 2006	Total to Date
17	Mission Hospital	0:00:00	2:09:00	13:46:00	15:55:00
27	UCI Medical Center	51:52:00	18:26:00	18:55:00	89:13:00
29	Western Medical Center - Santa Ana	6:27:00	3:58:00	1:03:00	11:28:00
Total		58:19:00	24:33:00	33:44:00	116:36:00
Median		6:27:00	3:58:00	13:46:00	15:55:00
Mean		19:26:20	8:11:00	11:14:40	38:52:00

Diversion Hours for Trauma Centers





**County of Orange
Health Care Agency
Health Disaster Management/Emergency Medical Services
1st Quarter 2006 (JAN. - MAR.) SYSTEM ACTIVITY REPORT**



GLOSSARY of Terms and Abbreviations

- ALS** Advanced Life Support. Services designed to provide definitive prehospital emergency medical care, administered by authorized personnel under the direct supervision of a base hospital as part of a local EMS system, at the scene of an emergency, during transport to an acute care hospital, during interfacility transfer, and while in the emergency department of an acute care hospital until responsibility is assumed by the emergency or other medical staff of that hospital.
- Airway Problems** Initial Assessment Codes A___. This category identifies patients with airway problems including croup, epiglottitis, laryngospasm, injuries, aspirated emesis, and obstructions due to a foreign body.
- Air Ambulance** Any aircraft specially constructed, modified or equipped and used for the primary purposes of responding to emergency calls and transporting critically ill or injured patients whose medical flight crew has at a minimum two (2) attendants certified or licensed in advanced life support. (reference: California Code of Regulations, title 22, chapter 8, section
- ALS No-Contact** ALS interventions which the paramedic can perform in the absence of on-line medical control. (Reference: OCEMS Treatment Guideline I-40.)
- ALS Provider** An agency approved to provide ALS-level care.
- AMA** Against Medical Advice. Patient left against the advice of medical professional, but with their knowledge.
- Base Hospital** A paramedic receiving hospital, staffed with a Mobile Intensive Care Nurse (MICN) and Base Physician and equipped with radio equipment, which provides on-line medical support to assist paramedics in the care of a patient. Provides retrospective medical control through quality improvement activities, and offers training and education to ALS providers.
- BHR** Base Hospital Report. A standardized form on which Base Hospital personnel (MICN's) document the assessment and care of patients, including response to treatment, performed by paramedics in the prehospital setting.
- BLS** Basic Life Support. Emergency first aid and cardiopulmonary resuscitation procedures to maintain life without invasive techniques until the victim may be transported or until advanced life support is available.
- BLS Provider** An agency approved to provide BLS-level care.
- Breathing Problems** Initial Assessment codes B___. This category identifies patients with breathing problems including asthma, emphysema (COPD), congestive heart failure (CHF), pulmonary edema, pneumonia, smoke inhalation, and chest injuries.



**County of Orange
Health Care Agency
Heath Disaster Management/Emergency Medical Services
1st Quarter 2006 (JAN. - MAR.) SYSTEM ACTIVITY REPORT**



Glossary: (Continued)

- Burn Center** A hospital holding a permit from the Department of Health Services which is committed to provide specialty care to burn patients.
- CC** Call Continuation...means that the retriaging Paramedic Receiving Center (PRC) physician has determined that an Emergency Medical Technician-Paramedic (EMT-P) escorted critical patient requires the specialty capabilities of a designated specialty center and that the EMT-Ps are still on the premises, and that the retriaging physician may request that those EMT-Ps immediately transport the patient to the appropriate OCEMS designated specialty receiving center.
- Circulatory Problems** Initial Assessment codes C__. This category identifies patients with circulatory-related problems including syncope, anaphylaxis, angina, possible myocardial infarction (R/O MI), internal bleeding (including GI bleeding), aneurysm, dysrhythmia, hypovolemia and cardiogenic shock
- CSO** Comprehensive Standing Orders. An expanded scope of practice in which paramedics can perform ALS interventions in the absence of on-line medical control. Provides additional interventions beyond those included in *ALS no-contact*. (Reference: Treatment Guideline I-40.)
- CTV** Critical Trauma Victim. Those patients with obvious, immediate need for paramedic trauma center level care as defined here: A victim of blunt or penetrating trauma, resulting in any of the following physical findings: respirations <12 or >30/minute, pulse <50 or >130/minute, systolic blood pressure <90 (adults) or <70 (pediatric patients); or penetrating injury to the neck, chest or abdomen; or blunt head injury with Glasgow coma score of <12, unequal pupils or focal neurologic deficit; or spinal cord injury with paralysis or paresthesia; or flail chest; or bilateral femur fractures.
- CVRC** Paramedic Receiving Center Hospital that has been designated by OCEMS to receive Field designated St Evaluation Myocardial Infarction patients.
- Delicate CNS** Initial Assessment codes D__. This category identifies patients with alteration in (central nervous system) neurological status, including seizures (non-febrile), CVA (cerebrovascular accident) or TIA (transient ischemic attack), head trauma, spine injury, alcohol / drug / overdose related problems, anxiety and psychiatric issues.
- Diversion** A request by hospitals to temporarily close to ambulance-transported patients. Permitted reasons are: emergency department resources are totally committed; neuro services unavailable; trauma services unavailable; CT scanner unavailable; an internal problem affecting the physical plant (fire, electrical outage, flooding etc). (Reference: OCEMS Policy #670.10.)
- DOA** Dead On Arrival. The patient has no blood pressure, no respiratory rate, and no heart rate on arrival to the ED. For Orange County, patients with these vital signs are considered dead on arrival regardless of treatments they may received in the ED.



**County of Orange
Health Care Agency
Health Disaster Management/Emergency Medical Services
1st Quarter 2006 (JAN. - MAR.) SYSTEM ACTIVITY REPORT**



Glossary: (Continued)

- External Soft Tissue** Initial Assessment codes E__. This category identifies patients with injuries including skin wounds, all types of burns, bites or stings, eye injury, and crush injury.
- GI / GU** Initial Assessment codes G__. This category identifies patients with gastrointestinal or genitourinary-related problems, including abdominal pain, flank/groin pain, or injury to either of these two systems.
- IFT** Interfacility Transfer. Transport of a patient from one acute care facility to another acute care facility for higher level of care. Can be performed by ambulance with BLS personnel, Critical Care Transport ambulance with a Registered Nurse, or by paramedic by accessing the 9-1-1 system if an immediate need to transport.
- MICN** Mobile Intensive Care Nurse. A Registered Nurse, who has additional training on EMS protocols and who, in conjunction with the Base Hospital physician, provides on-line medical support to paramedics.
- MTV** Moderate Trauma Victim. Those patients with potential need for trauma center level-care. Situations or conditions include: mechanism of injury (ejection, falls >15', auto/pedestrian accidents, bicycle or motorcycle crash >20 mph) and other injuries or conditions, including blunt head injury with loss of consciousness >5 minutes, extremes of age, pregnancy >20 weeks, other
- Multiple System Problems** Initial Assessment codes H__. This category identifies patients with problems involving more than one body system, including: hyper- or hypotension, sepsis, hyper- or hypoglycemia, cardiopulmonary arrest, trauma, cancer, allergic reactions, medication reactions, and environmental emergencies.
- OB / GYN** Initial Assessment codes I__ (Obstetrical/Gynecological). This category identifies patients with a pregnancy or gynecological-related problem, including pre-term or normal labor, field delivery, ectopic pregnancy, eclampsia, or sexual assault.
- On-line medical control** ALS interventions provided under the direction of a physician. May be accomplished by use of radio communications or cellular phone.
- PRC** Paramedic Receiving Center. A hospital with a permit from the California Department of Health Services for basic or comprehensive emergency services which has been designated as a participant in the EMS system by the Orange County EMS Agency.
- Paramedic Resource Hospital** A hospital that provides retrospective medical control through quality improvement activities and offers training and education to ALS providers. A paramedic resource hospital does not have a paramedic radio and therefore cannot provide on-line medical direction to ALS providers.
- PTRC** Paramedic Trauma Receiving Center. a.k.a. Trauma Center; A hospital, designated by OCEMS, which is committed to provide specialty care to trauma patients. In general, all patients designated as *critical trauma victims* and the majority of patients designated as *moderate trauma victims* will be transported to a trauma receiving center.



County of Orange
Health Care Agency
Health Disaster Management/Emergency Medical Services
1st Quarter 2006 (JAN. - MAR.) SYSTEM ACTIVITY REPORT



Glossary: (Continued)

- PCR** Patient Care Report / Prehospital Care Report. A standardized form on which EMS service providers document the assessment and care of patients, including response to treatment, in the prehospital setting.
- Pediatric Emergency** Initial Assessment codes J__. This category identifies medical situations of pediatric-age patients (<8 years), including febrile seizure, sudden infant death syndrome (SIDS), normal or distressed newborns, apparent life-threatening events (ALTE), and possible child abuse/neglect.
- ReddiNet** A computer-based communications system which allows hospitals to share information. Used to post a hospital's ability to accept additional ambulance transported patients. Also used during mass casualty incidents for patient assignment and patient tracking.
- Skeletal Injuries** Initial Assessment codes F__. This category identifies injuries to the skeletal system and includes strains and sprains, fractures, dislocations and amputations.