



**County of Orange  
Health Care Agency  
Health Disaster Management/Emergency Medical Services  
2nd Quarter 2006 (APR. - JUN.) SYSTEM ACTIVITY REPORT**



***Table of Contents***

**Report Distribution**..... 1

**Introduction**..... 2

**Central – One Reports (Base Data):**

- Transport / Non-Transport and Destination by Facility Type..... 3
- Call Volume by Receiving Center..... 4
- Call Volume by Provider Agency..... 6
- Call Volume by Provider Agency and ALS Unit..... 7
- Call Volume by Base Hospital..... 11
- Patient Assessment / Primary Suspected Problem – Detailed..... 12
- Patient Assessment / Primary Suspected Problem – Condensed..... 14
- Patient Assessment / Primary Suspected Problem – By Age..... 15
- Use of *ALS no-contact* Criteria: by Base Hospital..... 16
- Use of *ALS no contact* Criteria: Patient Assessment / Primary Suspected Problem..... 18
- Trauma Designations..... 20

**Other Reports:**

- Interfacility Transfers via the 9-1-1 System..... 21
- Hospital Diversion: Emergency Department Saturation..... 22
- Hospital Diversion: Trauma Centers..... 23

**Glossary**..... 24



**County of Orange  
Health Care Agency  
Health Disaster Management/Emergency Medical Services  
2nd Quarter 2006 (APR. - JUN.) SYSTEM ACTIVITY REPORT**



**REPORT DISTRIBUTION**

This report is distributed to the following individuals, committee members, groups or other entities:

- Ambulance Association of Orange County
- Base Hospital Coordinators
- Base Hospital Physician Directors
- County Paramedic Advisory Committee (CPAC), Orange County EMS
- Each Orange County Paramedic Receiving Center, Base Hospital, and Specialty Receiving Center
- Emergency Medical Care Committee (EMCC)
- Facilities Advisory Subcommittee (FAC), Orange County EMS
- Fire Paramedic Coordinators
- Health Care Agency
  - ✓ Juliette A. Poulson RN, MN; Agency Director
  - ✓ Terre Duensing, Division Manager, Health Disaster Management
  - ✓ Robert Gates; Project Director, Medical Services for Indigents
  - ✓ Eric Handler, MD; Health Officer, Public Health Services
  - ✓ Mark A. Refowitz, LCSW; Deputy Agency Director, Behavioral Health Services
  - ✓ Mike Spurgeon; Deputy Agency Director, Regulatory Health Services
- Hospital Association of Southern California (HASC)
- Orange County Ground and Air Ambulance Providers
- Orange County Communications
- Orange County Fire Chiefs Association
- Orange County Medical Association (OCMA)
- Orange County Paramedic Training Programs
- Quality Assurance Board (QAB), Orange County EMS
- Regional Paramedic Advisory Committees (RPAC), each Base Hospital
- State EMS Authority (EMSA)

Authorized for distribution:

Samuel J. Stratton  
Samuel J. Stratton MD: Medical Director

Gregory L. Boswell  
Gregory L. Boswell, RN: Program Manager

Laurent R. Repass  
Laurent R. Repass, EMT-P: QI Program Coordinator

Date: 06/11/07



**County of Orange  
Health Care Agency  
Health Disaster Management/Emergency Medical Services  
2nd Quarter 2006 (APR. - JUN.) SYSTEM ACTIVITY REPORT**



**Introduction**

Orange County EMS (OCEMS) collects data on EMS activity for the purpose of system monitoring and to facilitate continuous quality improvement activities at all levels of the prehospital healthcare delivery system. Data is collected from field providers (paramedics), base hospitals, paramedic receiving centers and trauma centers.

The County of Orange Health Care Agency/Emergency Medical Services Quarterly System Activity Report is generated every three calendar months and reflects system data of interest to all EMS system participants, including hospitals and provider agencies. The quarterly report is actually a series of individual reports and offers a “snapshot” of prehospital emergency medical care in Orange County. Other reports contained herein provide additional insight into Orange County’s medical care system.

Many of the reports contained in this summary are prepared from information obtained from the Base Hospital Report (BHR) and/or the Prehospital Care Report (PCR). All Base Hospitals collect and enter data from those reports into a database tracking system called Central One, designed by Lancet Technology®, Inc., and to submit this information to OCEMS. The System Activity Report does not contain data from other system participants (e.g. , Basic Life Support calls, private critical care ambulance transports, or public service access points).

Data for other reports, such as the Hospital Diversion report is obtained from the ReddiNet® computer system. All paramedic receiving center hospitals are required to have the ReddiNet® system, used primarily for communications between hospitals and for notifying other System participants of the hospital’s open/closed status. The ReddiNet system is also used during mass casualty incidents, whether actual events or planned drills. Reports contained in this quarterly activity report are:

**Central-One Reports:**

- Transport / Non-Transport and Destination by Facility Type
- Call Volume by Receiving Center
- Call Volume by Provider Agency and ALS Unit
- Call Volume by Base Hospital
- Patient Assessment / Primary Suspected Problem – Detailed
- Patient Assessment / Primary Suspected Problem – Condensed
- Patient Assessment / Primary Suspected Problem – By Age
- Use of ALS no-contact: by Base Hospital
- Use of ALS no-contact: Patient Assessment / Primary Suspected Problem
- Trauma Designations

**Other Reports:**

- Interfacility Transfers via the 9-1-1 System
- Hospital Diversion: Emergency Department Saturation
- Hospital Diversion: Trauma Centers

Suggestions for additional reports are welcome and should be directed to Greg L. Boswell, RN Program Manager or Samuel J. Stratton, M.D., OCEMS Medical Director.



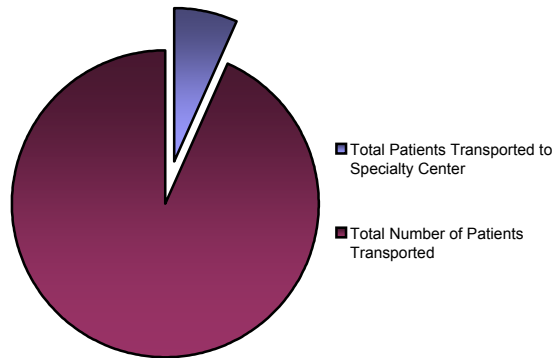
**County of Orange  
Health Care Agency  
Health Disaster Management/Emergency Medical Services  
2nd Quarter 2006 (APR. - JUN.) SYSTEM ACTIVITY REPORT**



**Transport / Non-transport and Destination by Facility Type**

This report provides a quick overview of the disposition of patients seen by ALS providers (transported and not transported) and entered into the Central-One database. The numbers of patients transported to either a regular paramedic receiving center or to a specialty center are shown; for non-transported patients, the number who are released on scene and/or refuse transport, and those who are dead on scene are listed. *Data Source: Central One*

<b>Total Number of Patients Transported</b>	<b>13,168</b>	<b>97%</b>
<b>Total transported to PRC (non-specialty center)</b>	<b>12,221</b>	<b>90%</b>
<b>Total Patients Transported to Specialty Center</b>	<b>947</b>	<b>7%</b>
Trauma center	878	6%
Burn center	15	0%
Cardiac Center	54	0%
<b>Total Number of Patients Not Transported</b>	<b>343</b>	<b>3%</b>
Released on scene / refused transport	259	2%
Dead on Scene	84	1%
<b>Total Number of Calls</b>	<b>13,511</b>	<b>100%</b>





**County of Orange  
Health Care Agency  
Health Disaster Management/Emergency Medical Services  
2nd Quarter 2006 (APR. - JUN.) SYSTEM ACTIVITY REPORT**



**Call Volume by Receiving Center**

This report provides a breakdown of the number of patient transports to each of the approved paramedic receiving centers in Orange County as well as those hospitals outside of Orange County approved to receive OCEMS patients. *Data Source: Central One*

<b>ID#</b>	<b>Receiving Hospital</b>	<b>Total</b>	<b>Percent</b>
1	Anaheim General Hospital	81	1%
2	Anaheim Memorial Medical Center	857	6%
4	Kaiser Foundation - Anaheim	285	2%
5	Chapman Medical Center	134	1%
7	Fountain Valley Regional Medical Center	553	4%
9	Hoag Memorial Hospital - Presbyterian	1,522	11%
10	Huntington Beach Hospital	449	3%
12	La Palma Intercommunity Hospital	164	1%
13	Los Alamitos Medical Center	456	3%
15	Coastal Communities Hospital	140	1%
17	Mission Hospital Regional Medical Center	1,166	9%
19	Garden Grove Hospital and Medical Center	277	2%
20	Placentia Linda Hospital	380	3%
21	SMMC - Laguna Hills	971	7%
22	St. Joseph Hospital	767	6%
23	St. Jude Medical Center	734	5%
24	SMMC - San Clemente	251	2%
25	South Coast Medical Center	200	1%
26	Tustin Hospital and Medical Center	19	0%
27	UCI Medical Center	800	6%
28	West Anaheim Medical Center	653	5%
29	Western Medical Center - Santa Ana	801	6%
30	Western Medical Center - Anaheim	318	2%
34	Long Beach Memorial Medical Center*	70	1%
37	St. Mary Medical Center*	1	0%
38	Orange Coast Memorial Medical Center	436	3%
39	Irvine Regional Medical Center	491	4%
53	Community Hospital of Long Beach*	6	0%
55	Whittier Medical Center*	47	0%
56	Presbyterian Intercommunity Hospital*	12	0%
36	Other	7	0%
60	Release / Signed AMA	259	2%
99	Dead on Scene	84	1%
	Not Documented	120	1%
<b>Total</b>		<b>13,511</b>	<b>100%</b>

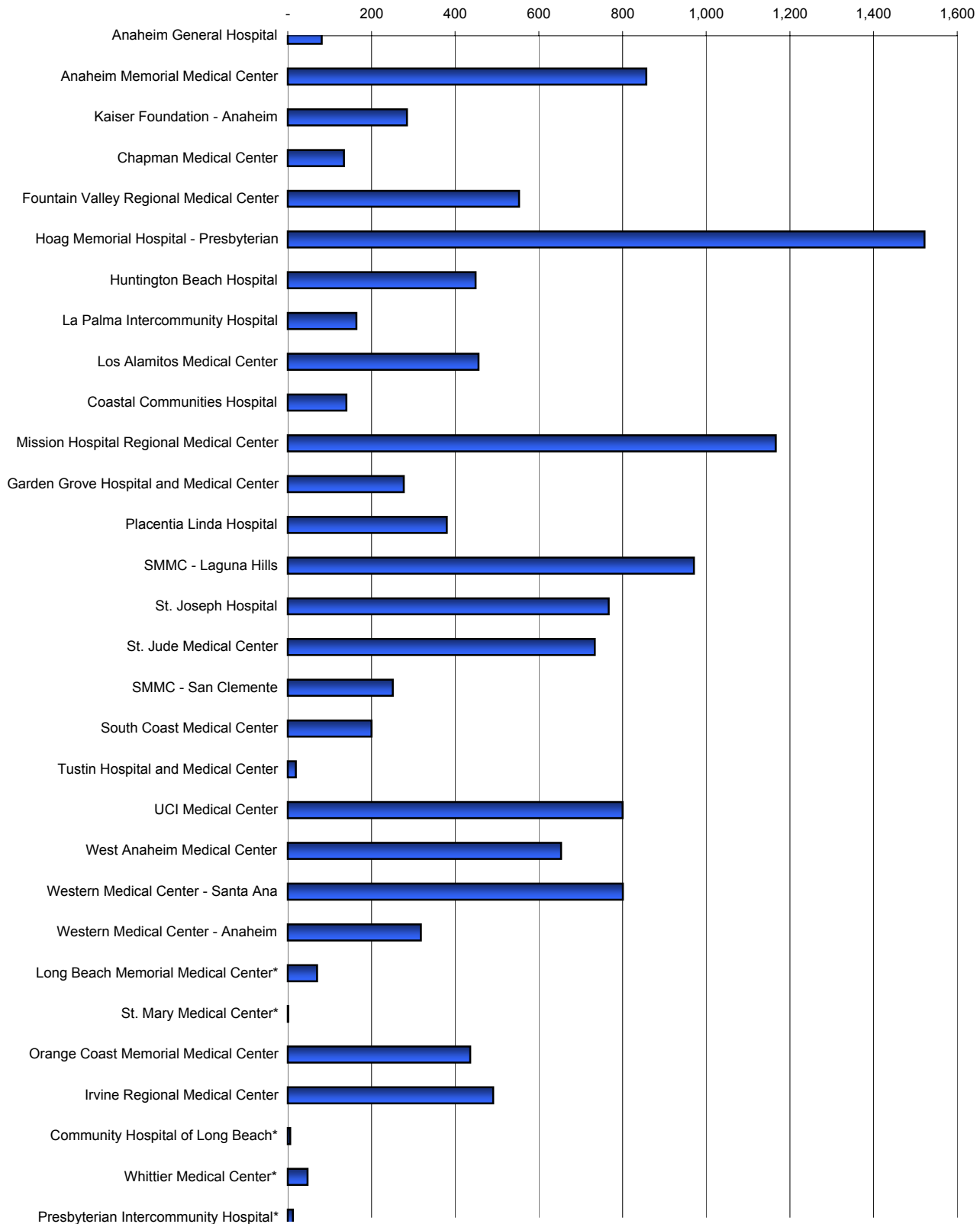
\*Hospital located in Los Angeles County



County of Orange  
Health Care Agency  
Health Disaster Management/Emergency Medical Services  
2nd Quarter 2006 (APR. - JUN.) SYSTEM ACTIVITY REPORT



Call Volume by Receiving Center



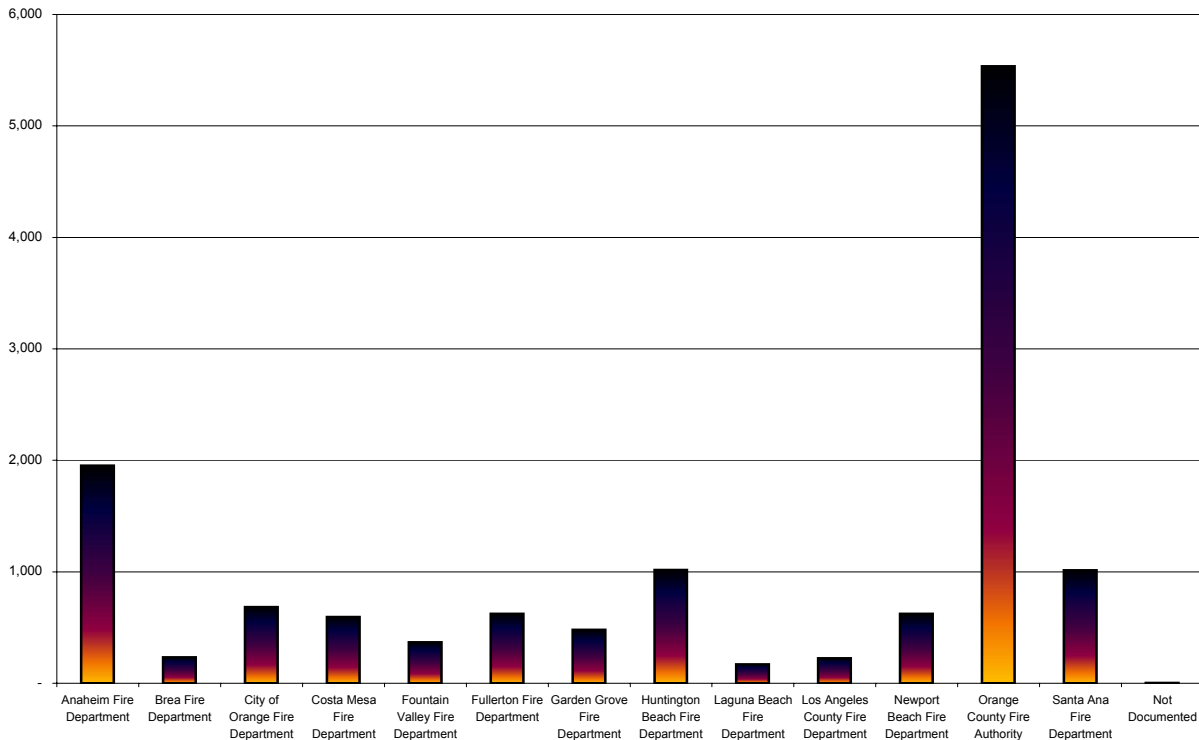


**County of Orange  
Health Care Agency  
Health Disaster Management/Emergency Medical Services  
2nd Quarter 2006 (APR. - JUN.) SYSTEM ACTIVITY REPORT**



**ALS Call Volume by EMS Provider Agency**

ID #	EMS Provider Agency	Total	Percent
1	Anaheim Fire Department	1,951	14%
2	Brea Fire Department	232	2%
12	City of Orange Fire Department	684	5%
4	Costa Mesa Fire Department	593	4%
5	Fountain Valley Fire Department	367	3%
6	Fullerton Fire Department	622	5%
7	Garden Grove Fire Department	480	4%
8	Huntington Beach Fire Department	1,016	8%
9	Laguna Beach Fire Department	169	1%
21	Los Angeles County Fire Department	223	2%
11	Newport Beach Fire Department	622	5%
13	Orange County Fire Authority	5,535	41%
15	Santa Ana Fire Department	1,014	8%
	Not Documented	3	0%
	<b>Total</b>	<b>13,511</b>	<b>100%</b>





**County of Orange  
Health Care Agency  
Health Disaster Management/Emergency Medical Services  
2nd Quarter 2006 (APR. - JUN.) SYSTEM ACTIVITY REPORT**

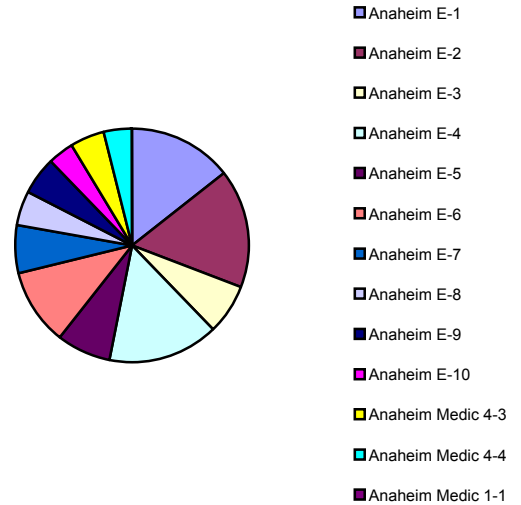


**ALS Call Volume by Provider Agency and ALS Unit**

This report reflects the number of base contacted, ALS no-contact, and CSO calls for each fire department, by individual ALS unit. Basic Life Support calls are not included in this report.

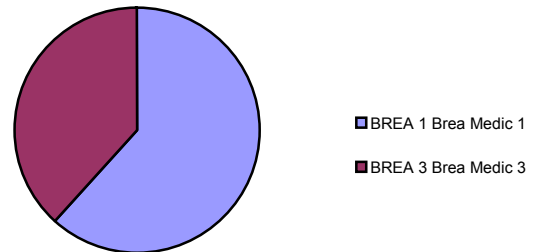
Data Source: Central One

<b>Anaheim Fire Department</b>			
A1	Anaheim E-1	281	14%
A2	Anaheim E-2	319	16%
A3	Anaheim E-3	136	7%
A4	Anaheim E-4	299	15%
A5	Anaheim E-5	145	7%
A6	Anaheim E-6	210	11%
A7	Anaheim E-7	129	7%
A8	Anaheim E-8	88	5%
A9	Anaheim E-9	103	5%
A10	Anaheim E-10	74	4%
A43	Anaheim Medic 4-3	92	5%
A44	Anaheim Medic 4-4	75	4%
	Anaheim Medic 1-1	0	0%
<b>Total</b>		<b>1,951</b>	<b>100%</b>



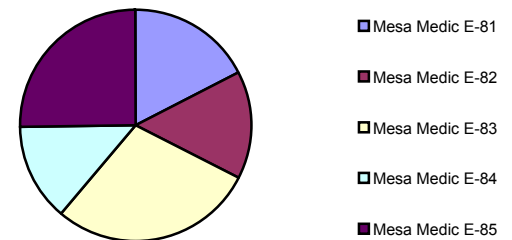
\*All units assigned to Anaheim Memorial (Paramedic Resource Hospital)

<b>Brea Fire Department</b>			
BREA 1	Brea Medic 1	143	62%
BREA 3	Brea Medic 3	89	38%
<b>Total</b>		<b>232</b>	<b>100%</b>



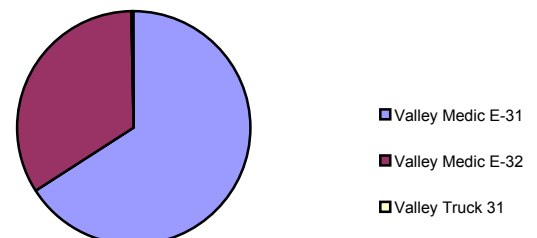
\*All units assigned to St. Jude Base Hospital

<b>Costa Mesa Fire Department</b>			
M81	Mesa Medic E-81	104	18%
M82	Mesa Medic E-82	89	15%
M83	Mesa Medic E-83	170	29%
M84	Mesa Medic E-84	80	13%
M85	Mesa Medic E-85	150	25%
<b>Total</b>		<b>593</b>	<b>100%</b>



\*All units assigned to Hoag Memorial Base Hospital

<b>Fountain Valley Fire Department</b>			
V31	Valley Medic E-31	242	66%
V32	Valley Medic E-32	124	34%
VT31A	Valley Truck 31	1	0%
<b>Total</b>		<b>367</b>	<b>100%</b>



\*All units assigned to Huntington Beach Base Hospital



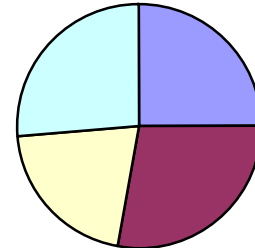
**County of Orange  
Health Care Agency  
Health Disaster Management/Emergency Medical Services  
2nd Quarter 2006 (APR. - JUN.) SYSTEM ACTIVITY REPORT**



**ALS Call Volume by Provider Agency and ALS Unit (continued)**

<b>Fullerton Fire Department</b>			
F1	Fullerton Medic 1	155	25%
F2	Fullerton Medic 2	173	28%
F4A	Fullerton E-4	129	21%
F5	Fullerton Medic 5	165	27%
<b>Total</b>		<b>622</b>	<b>100%</b>

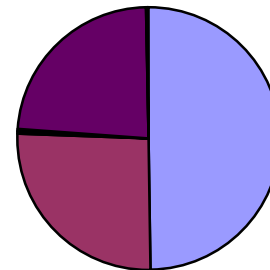
\*All units assigned to St. Jude Base Hospital



- Fullerton Medic 1
- Fullerton Medic 2
- Fullerton E-4
- Fullerton Medic 5

<b>Garden Grove Fire Department</b>			
G1	Grove Medic E-1	239	50%
G2	Grove Medic E-2	123	26%
G2R	Grove Medic 2-R	2	0%
G3A	Grove E-3	1	0%
G5	Grove Medic E-5	114	24%
G6A	Grove Engine 6	0	0%
G7A	Grove E-7	1	0%
<b>Total</b>		<b>480</b>	<b>100%</b>

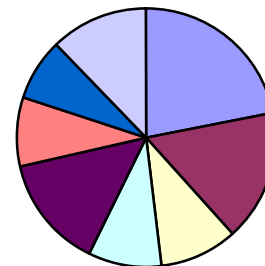
\*All units assigned to UCIMC Base Hospital



- Grove Medic E-1
- Grove Medic E-2
- Grove Medic 2-R
- Grove E-3
- Grove Medic E-5
- Grove Engine 6
- Grove E-7

<b>Huntington Beach Fire Department</b>			
H41	Huntington Medic E-41	224	22%
H42	Huntington Medic E-42	166	16%
H43	Huntington Medic E-43	97	10%
H44	Huntington Medic E-44	93	9%
H45	Huntington Medic E-45	146	14%
H46	Huntington Medic E-46	88	9%
H47	Huntington Medic E-47	78	8%
H48	Huntington Medic E-48	124	12%
<b>Total</b>		<b>1,016</b>	<b>100%</b>

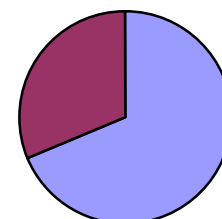
\*All units assigned to Huntington Beach Base Hospital



- Huntington Medic E-41
- Huntington Medic E-42
- Huntington Medic E-43
- Huntington Medic E-44
- Huntington Medic E-45
- Huntington Medic E-46
- Huntington Medic E-47
- Huntington Medic E-48

<b>Laguna Beach Fire Department</b>			
L1	Laguna Medic E-1	116	69%
L4	Laguna Medic E-4	53	31%
<b>Total</b>		<b>169</b>	<b>100%</b>

\*All units assigned to Hoag Memorial Base Hospital



- Laguna Medic E-1
- Laguna Medic E-4



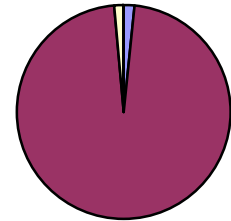
**County of Orange  
Health Care Agency  
Health Disaster Management/Emergency Medical Services  
2nd Quarter 2006 (APR. - JUN.) SYSTEM ACTIVITY REPORT**



**ALS Call Volume by Provider Agency and ALS Unit continued**

<b>Los Angeles County Fire Department</b>			
LAE191	Los Angeles County E-191	4	2%
LAS191	Los Angeles County Squad 191	217	97%
LAE192	Los Angeles County E-192	3	0%
LAE193	Los Angeles County E-193	0	0%
LAE194	Los Angeles County E-194	0	0%
<b>Total</b>		<b>224</b>	<b>100%</b>

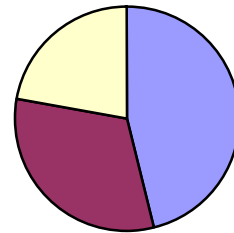
\*All units assigned to St. Jude Base Hospital



- Los Angeles County E-191
- Los Angeles County Squad 191
- Los Angeles County E-192
- Los Angeles County E-193
- Los Angeles County E-194

<b>Newport Beach Fire Department</b>			
N62	Newport Medic 62	286	46%
N63	Newport Medic 63	197	32%
N65	Newport Medic 65	139	22%
<b>Total</b>		<b>622</b>	<b>100%</b>

\*All units assigned to Hoag Memorial Base Hospital



- Newport Medic 62
- Newport Medic 63
- Newport Medic 65

<b>City of Orange Fire Department</b>			
O1A	Orange E-1	13	2%
O2A	Orange E-2	1	0%
O3A	Orange E-3	32	5%
O4A	Orange E-4	18	3%
O5A	Orange E-5	39	6%
O6A	Orange E-6	3	0%
O7A	Orange E-7	3	0%
O8A	Orange E-8	1	0%
OR3	Orange Rescue 3	178	26%
OR4	Orange Rescue 4	177	26%
OR5	Orange Rescue 5	219	32%
<b>Total</b>		<b>684</b>	<b>100%</b>

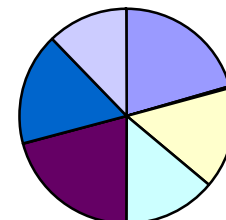
\*All units assigned to UCIMC Base Hospital



- Orange E-1
- Orange E-2
- Orange E-3
- Orange E-4
- Orange E-5
- Orange E-6
- Orange E-7
- Orange E-8
- Orange Rescue 3
- Orange Rescue 4
- Orange Rescue 5

<b>Santa Ana Fire Department</b>			
SA1	Santa Ana Medic 1	209	22%
SA2	Santa Ana Medic 2	1	1%
SA3	Santa Ana Medic 3	157	15%
SA4	Santa Ana Medic 4	140	15%
SA5	Santa Ana Medic 5	210	21%
SA6A	Santa Ana Medic 6	2	<1%
SA7	Santa Ana E-7	171	16%
SA8	Santa Ana E-8	124	11%
<b>Total</b>		<b>1014</b>	<b>100%</b>

\*All units assigned to WestMed - Santa Ana Base Hospital



- Santa Ana Medic 1
- Santa Ana Medic 2
- Santa Ana Medic 3
- Santa Ana Medic 4
- Santa Ana Medic 5
- Santa Ana Medic 6
- Santa Ana E-7
- Santa Ana E-8



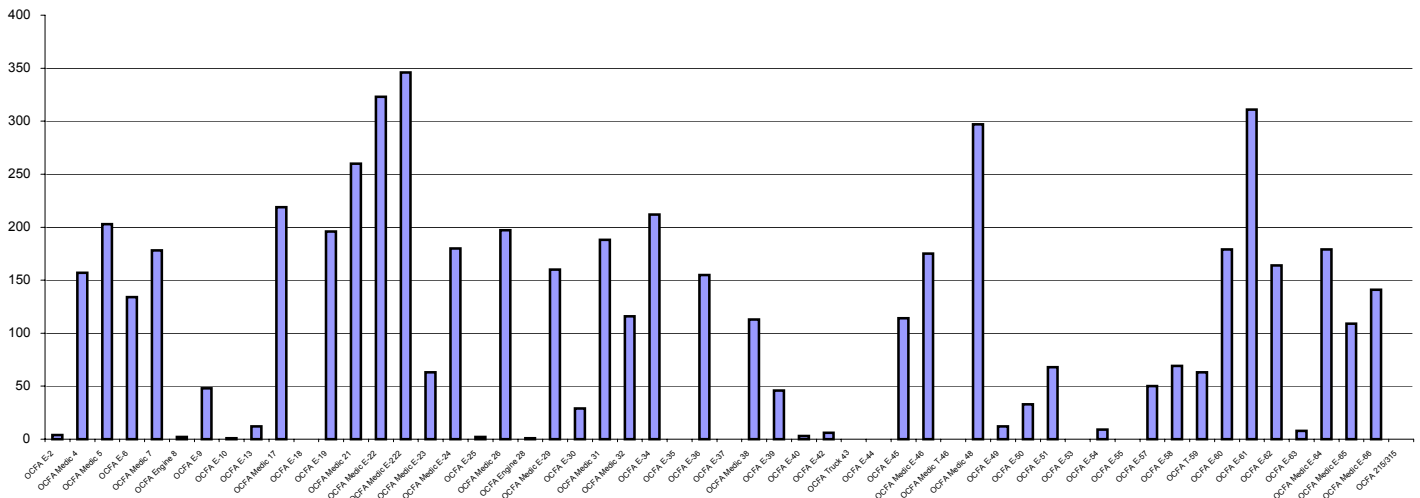
**County of Orange  
Health Care Agency  
Health Disaster Management/Emergency Medical Services  
2nd Quarter 2006 (APR. - JUN.) SYSTEM ACTIVITY REPORT**



**ALS Call Volume by Provider Agency and ALS Unit (continued)**

Orange County Fire Authority							
2A	OCFA E-2 <sup>4</sup>	4	0%	38	OCFA Medic 38 <sup>b</sup>	113	2%
4	OCFA Medic 4 <sup>1</sup>	157	3%	39A	OCFA E-39 <sup>b</sup>	46	1%
5	OCFA Medic 5 <sup>b</sup>	203	4%	40A	OCFA E-40 <sup>b</sup>	3	0%
6A	OCFA E-6 <sup>1</sup>	134	2%	42A	OCFA E-42 <sup>b</sup>	6	0%
7	OCFA Medic 7 <sup>b</sup>	178	3%	43A	OCFA Truck 43 <sup>1</sup>	0	0%
8A	OCFA Engine 8 <sup>1</sup>	2	0%	44A	OCFA E-44 <sup>4</sup>	0	0%
9A	OCFA E-9 <sup>b</sup>	48	1%	45A	OCFA E-45 <sup>b</sup>	114	2%
10A	OCFA E-10 <sup>3</sup>	1	0%	46	OCFA Medic E-46 <sup>4</sup>	175	3%
13A	OCFA E-13 <sup>4</sup>	12	0%	T46A	OCFA Medic T-46 <sup>4</sup>	0	0%
17	OCFA Medic 17 <sup>4</sup>	219	4%	48	OCFA Medic 48 <sup>4</sup>	297	5%
18A	OCFA E-18 <sup>b</sup>	0	0%	49A	OCFA E-49 <sup>b</sup>	12	0%
19	OCFA E-19 <sup>b</sup>	196	4%	50	OCFA E-50 <sup>b</sup>	33	1%
21	OCFA Medic 21 <sup>1</sup>	260	5%	51	OCFA E-51 <sup>b</sup>	68	1%
22	OCFA Medic E-22 <sup>b</sup>	323	6%	53A	OCFA E-53 <sup>3</sup>	0	0%
222	OCFA Medic E-222 <sup>b</sup>	346	6%	54A	OCFA E-54 <sup>b</sup>	9	0%
23	OCFA Medic E-23 <sup>1</sup>	63	1%	55A	OCFA E-55 <sup>b</sup>	0	0%
24	OCFA Medic E-24 <sup>1</sup>	180	3%	57A	OCFA E-57 <sup>b</sup>	50	1%
25A	OCFA E-25 <sup>4</sup>	2	0%	58	OCFA E-58 <sup>b</sup>	69	1%
26	OCFA Medic 26 <sup>1</sup>	197	4%	59A	OCFA T-59 <sup>b</sup>	63	1%
28A	OCFA Engine 28 <sup>1</sup>	1	0%	60	OCFA E-60 <sup>b</sup>	179	3%
29	OCFA Medic E-29 <sup>b</sup>	160	3%	61	OCFA E-61 <sup>3</sup>	311	6%
30A	OCFA E-30 <sup>b</sup>	29	1%	62	OCFA E-62 <sup>3</sup>	164	3%
31	OCFA Medic 31 <sup>b</sup>	188	3%	63A	OCFA E-63 <sup>3</sup>	8	0%
32	OCFA Medic 32 <sup>3</sup>	116	2%	64	OCFA Medic E-64 <sup>4</sup>	179	3%
34	OCFA E-34 <sup>3</sup>	212	4%	65	OCFA Medic E-65 <sup>4</sup>	109	2%
35A	OCFA E-35 <sup>3</sup>	0	0%	66	OCFA Medic E-66 <sup>4</sup>	141	3%
36A	OCFA E-36 <sup>1</sup>	155	3%	215A	OCFA 215/315	0	0%
37A	OCFA E-37 <sup>1</sup>	0	0%				
<b>Total</b>						<b>5,535</b>	<b>100%</b>

1 Units assigned to WestMed - Santa Ana Base Hospital  
 3 Units assigned to St. Jude Base Hospital  
 4 Units assigned to Huntington Beach Base Hospital  
 6 Units assigned to Mission Base Hospital





**County of Orange  
Health Care Agency  
Health Disaster Management/Emergency Medical Services  
2nd Quarter 2006 (APR. - JUN.) SYSTEM ACTIVITY REPORT**

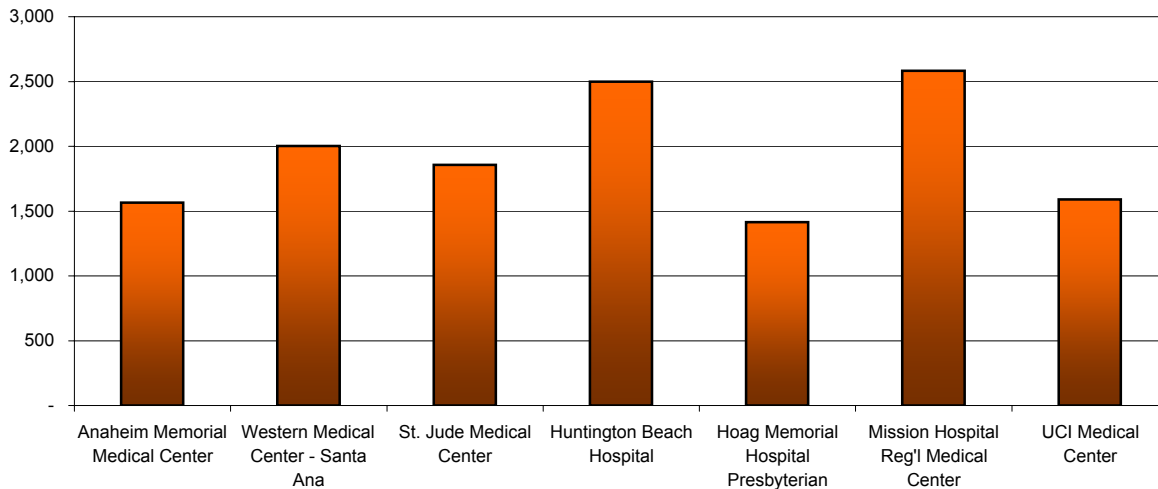


**Call Volume by Base Hospital**

This report shows the number of calls managed by each of the six Base Hospitals for patient encounters in which paramedics established on-line medical control, as well as those managed under the ALS no-contact criteria. One ALS provider agency operates under an expanded scope termed Comprehensive Standing Orders (CSO); those calls are reflected in the data reported by the one Paramedic Resource Hospital.

*Data Source: Central One*

ID #	Paramedic Resource Hospital	Total	Percent
2	Anaheim Memorial Medical Center	1,565	12%
ID #	Base Hospital	Total	Percent
1	Western Medical Center - Santa Ana	2,002	15%
3	St. Jude Medical Center	1,858	14%
4	Huntington Beach Hospital	2,499	18%
5	Hoag Memorial Hospital Presbyterian	1,415	10%
6	Mission Hospital Reg'l Medical Center	2,583	19%
7	UCI Medical Center	1,589	12%
<b>Total</b>		<b>13,511</b>	<b>100%</b>





**County of Orange  
Health Care Agency  
Health Disaster Management/Emergency Medical Services  
2nd Quarter 2006 (APR. - JUN.) SYSTEM ACTIVITY REPORT**



**ALS Patient Assessment / Primary Suspected Problem - Detailed**

When paramedics evaluate a patient, they and the base hospital make a working diagnosis or assessment of the patient's presumed medical problem. This report summarizes the types of medical problems encountered by ALS providers, grouped by general classifications. See the Glossary for additional information. (The alpha-numeric indicator preceding each assessment is the OCEMS-assigned approved coding used when entering information into the Lancet database.) *Data Source: Central One*

ID#	Initial Assessment Category	Total	Percent
<b>Airway Problems</b>		<b>41</b>	<b>0%</b>
A04	Croup / Epiglottitis	4	0%
	All Others	37	0%
<b>Breathing Problems</b>		<b>1,666</b>	<b>12%</b>
B01 / B14	Pulmonary Edema / CHF	356	3%
B02	COPD	291	2%
B03	Asthma	263	2%
	All Others	756	6%
<b>Circulatory Problems</b>		<b>3,529</b>	<b>26%</b>
C01	Syncope	771	6%
C03 / C07	Hypovolemic Shock / Cardiogenic Shock	81	1%
C04	GI Bleeding	159	1%
C08	Angina	1,043	8%
C09	R/O MI	664	5%
C10	Dysrhythmias	353	3%
C16	STEMI to CVRC	54	0%
	All Others	458	3%
<b>Delicate CNS</b>		<b>3,382</b>	<b>25%</b>
D01	Alcohol-related	229	2%
D02	Seizure (non-febrile)	874	6%
D05 / D06	Overdose / Drug Ingestion	482	4%
D07 / D23	CVA / TIA	648	5%
D12	Head Trauma to PTRC	27	0%
D24	Head Trauma to PRC	92	1%
	All others	1,030	8%
<b>External Soft Tissue</b>		<b>147</b>	<b>1%</b>
E03 / E04 / E05 / E08	Burns (All categories)	26	0%
E12	Burn to Burn Center	15	0%
	All Others	106	1%
<b>Skeletal Injuries</b>		<b>377</b>	<b>3%</b>
F01 / F02 / F03	Suspected Fractures	153	1%
F05	Amputation	15	0%
F06	Strain / Sprain	100	1%
	All Others	109	1%
<b>GI / GU</b>		<b>433</b>	<b>3%</b>
G01 / G02	Abdominal pain	255	2%
G08	Flank / Groin pain	41	0%
	All Others	137	1%



**County of Orange  
Health Care Agency  
Health Disaster Management/Emergency Medical Services  
2nd Quarter 2006 (APR. - JUN.) SYSTEM ACTIVITY REPORT**

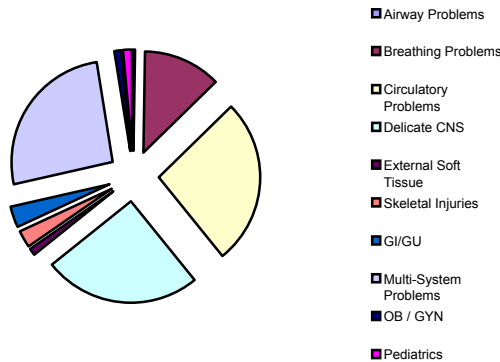


**ALS Patient Assessment / Primary Suspected Problem - Detailed (continued)**

<b>Multiple System Problems</b>		<b>3,483</b>	<b>26%</b>
H01	Cardiopulmonary Arrest - Medical	292	2%
H04 / H05	Diabetic Related Problem	804	6%
H06	Submersion (drowning / near-drowning)	14	0%
H08	MTV to PRC	73	1%
H09	MTV / CTV to PTRC	808	6%
H10	General Weakness	691	5%
H15	Allergic Reaction	119	1%
H18	Hypotension	197	1%
H20	Cardiopulmonary Arrest - Traumatic	5	0%
	All Others	480	4%
<b>OB / GYN</b>		<b>159</b>	<b>1%</b>
I01	Vaginal Bleeding	29	0%
I04 / I05 / I07 / I11	Other OB-related	58	0%
I06	Normal Field Delivery	16	0%
	All Others	56	0%
<b>Pediatric</b>		<b>191</b>	<b>1%</b>
J01	Suspected SIDS	3	0%
J03 / J04	Newborn	12	0%
J07	Febrile Seizure	133	1%
	All Others	43	0%
	Initial Assessments/Not Documented/Blank	103	1%
	<b>Total</b>	<b>13,511</b>	<b>100%</b>

**Patient Assessment /Primary Suspected Problem - By Category**

<b>ID</b>	<b>Assessment Category</b>	<b>Total</b>	<b>Percent</b>
A	Airway Problems	41	0%
B	Breathing Problems	1,666	12%
C	Circulatory Problems	3,529	26%
D	Delicate CNS	3,382	25%
E	External Soft Tissue	147	1%
F	Skeletal Injuries	377	3%
G	GI/GU	433	3%
H	Multi-System Problems	3,483	26%
I	OB / GYN	159	1%
J	Pediatrics	191	1%
	Initial Assessments/Not Documented/Blank	103	1%
	<b>Total</b>	<b>13,511</b>	<b>100%</b>





**County of Orange  
Health Care Agency  
Health Disaster Management/Emergency Medical Services  
2nd Quarter 2006 (APR. - JUN.) SYSTEM ACTIVITY REPORT**

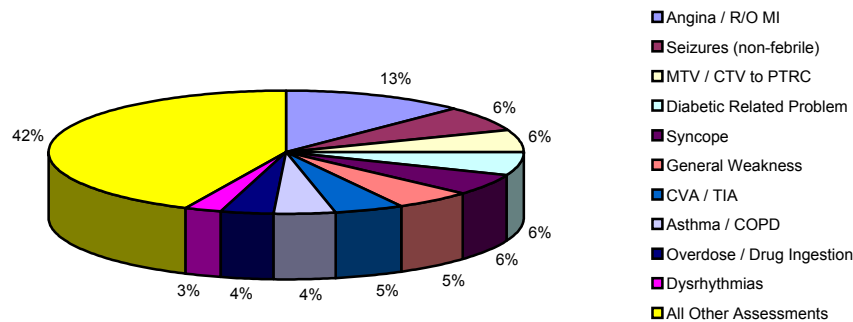


**ALS Patient Assessment / Primary Suspected Problem - Condensed**

This report summarizes the general assessment categories and the most frequently used specific initial assessment for all patient encounters (ALS Assessment, Base Hospital Contacted, ALS No-Contact Criteria, and Comprehensive Standing Orders "CSO"). *Data Source: Central One*

	ID#	Initial Assessment	Total	Percent
1	C08 / C09	Angina / R/O MI	1,707	13%
2	D02	Seizures (non-febrile)	874	6%
3	H09	MTV / CTV to PTRC	808	6%
4	H04 / H05	Diabetic Related Problem	804	6%
5	C01	Syncope	771	6%
6	H10	General Weakness	691	5%
7	D07 / D23	CVA / TIA	648	5%
8	B02 / B03	Asthma / COPD	554	4%
9	D05 / D06	Overdose / Drug Ingestion	482	4%
10	C10	Dysrhythmias	353	3%
All Other Assessments			5,819	43%
<b>Total</b>			<b>13,511</b>	<b>100%</b>

**Patient Assessment**





**County of Orange  
Health Care Agency  
Health Disaster Management/Emergency Medical Services  
2nd Quarter 2006 (APR. - JUN.) SYSTEM ACTIVITY REPORT**



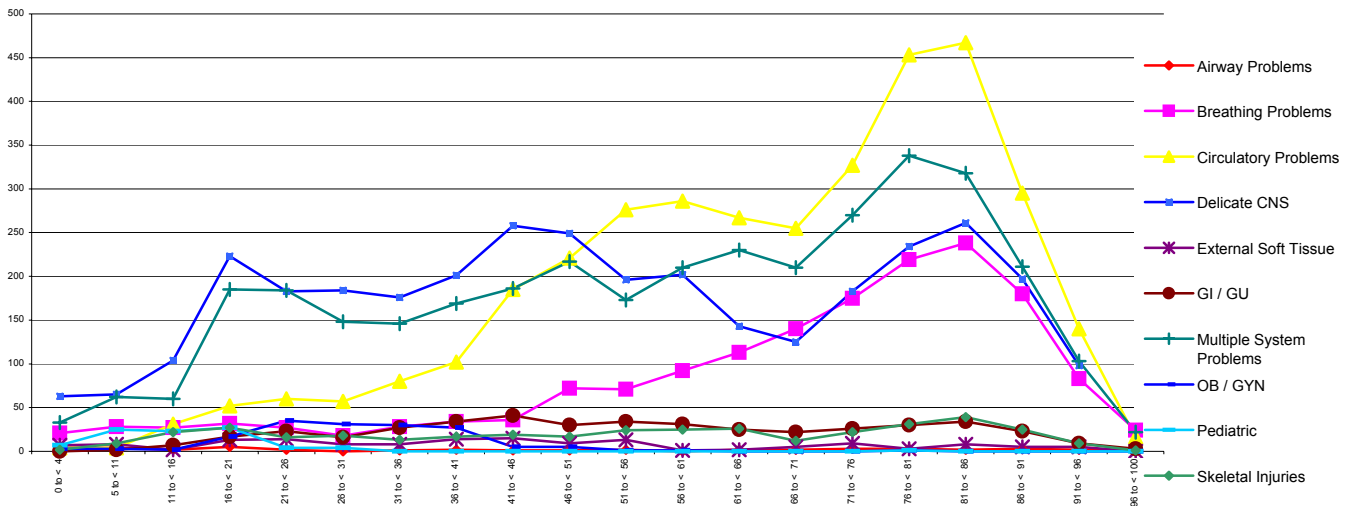
**ALS Patient Assessment / Primary Suspected Problem – By Age**

This report summarizes the most frequently used specific initial assessment for all patient encounters (ALS Assessment, Base Hospital Contacted, ALS No-Contact Criteria, and Comprehensive Standing Orders “CSO”) and categorizes them by the patient’s age (in years). \*\*Note: Totals do not include “Blank” and “Not Documented” items.\*\*

Data Source: Central One

Assessment Category	0 to < 4	5 to < 11	11 to < 16	16 to < 21	21 to < 26	26 to < 31	31 to < 36	36 to < 41	41 to < 46	46 to < 51
Airway Problems	4	4	2	5	2	0	1	2	1	1
Breathing Problems	21	28	27	32	27	18	28	34	36	72
Circulatory Problems	4	4	31	52	60	57	80	102	185	221
Delicate CNS	63	65	104	223	183	184	176	201	258	249
External Soft Tissue	7	8	2	13	14	8	8	14	15	9
GI / GU	0	2	7	17	23	16	27	34	41	30
Multiple System Problems	33	62	60	185	184	148	146	169	186	217
OB / GYN	3	3	2	17	35	31	30	27	5	5
Pediatric	7	25	23	27	4	4	0	0	0	0
Skeletal Injuries	2	9	22	27	16	18	13	17	19	17
<b>Total</b>	<b>144</b>	<b>210</b>	<b>280</b>	<b>598</b>	<b>548</b>	<b>484</b>	<b>509</b>	<b>600</b>	<b>746</b>	<b>821</b>
<b>Percent of Total Volume</b>	<b>1%</b>	<b>2%</b>	<b>2%</b>	<b>4%</b>	<b>4%</b>	<b>4%</b>	<b>4%</b>	<b>4%</b>	<b>6%</b>	<b>6%</b>

Assessment Category	51 to < 56	56 to < 61	61 to < 66	66 to < 71	71 to < 76	76 to < 81	81 to < 86	86 to < 91	91 to < 96	96 to < 100
Airway Problems	2	0	2	2	3	3	2	3	2	1
Breathing Problems	71	92	113	140	175	219	238	180	83	24
Circulatory Problems	276	286	267	255	327	453	467	295	140	16
Delicate CNS	196	202	143	125	183	234	261	197	98	23
External Soft Tissue	13	1	2	5	9	3	8	5	5	0
GI / GU	34	31	25	22	26	30	34	23	9	3
Multiple System Problems	173	210	230	210	270	338	318	211	103	22
OB / GYN	1	1	0	0	0	1	0	0	0	0
Pediatric	0	0	0	0	0	1	0	0	0	0
Skeletal Injuries	24	25	26	12	22	31	39	25	9	1
<b>Total</b>	<b>790</b>	<b>848</b>	<b>808</b>	<b>771</b>	<b>1,015</b>	<b>1,313</b>	<b>1,367</b>	<b>939</b>	<b>449</b>	<b>90</b>
<b>Percent of Total Volume</b>	<b>6%</b>	<b>6%</b>	<b>6%</b>	<b>6%</b>	<b>8%</b>	<b>10%</b>	<b>10%</b>	<b>7%</b>	<b>3%</b>	<b>1%</b>





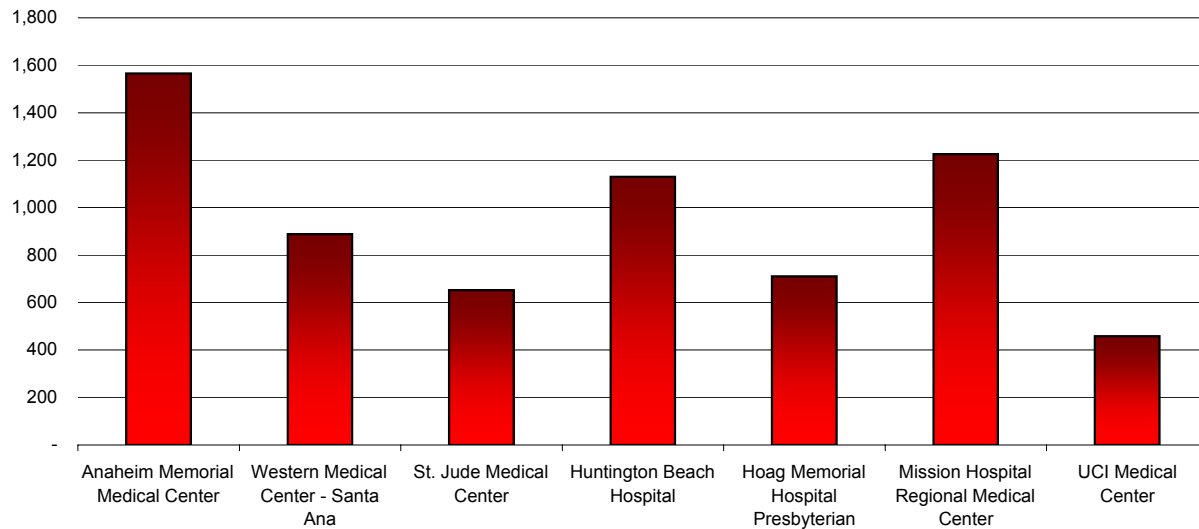
**County of Orange  
Health Care Agency  
Health Disaster Management/Emergency Medical Services  
2nd Quarter 2006 (APR. - JUN.) SYSTEM ACTIVITY REPORT**



**Use of ALS No-Contact Criteria: By Base Hospital**

This report shows the frequency of use of ALS No-Contact criteria by paramedics assigned to each Base Hospital. (See OCEMS Treatment Guideline I-40 for specific criteria). *Data Source: Central One*

ID #	Paramedic Resource Hospital	Total	Percent
2	Anaheim Memorial Medical Center	1,565	24%
ID #	Base Hospital	Total	Percent
1	Western Medical Center - Santa Ana	889	13%
3	St. Jude Medical Center	652	10%
4	Huntington Beach Hospital	1,130	17%
5	Hoag Memorial Hospital Presbyterian	711	11%
6	Mission Hospital Regional Medical Center	1,225	18%
7	UCI Medical Center	458	7%
<b>Total (ALS No-Contact Calls Only)</b>		<b>5,065</b>	<b>76%</b>
<b>Total (ALS No-Contact and CSO)</b>		<b>6,630</b>	<b>100%</b>





**County of Orange  
Health Care Agency  
Health Disaster Management/Emergency Medical Services  
2nd Quarter 2006 (APR. - JUN.) SYSTEM ACTIVITY REPORT**



**Use of ALS No-Contact Criteria: Patient Assessment/Primary Suspected Problem**

This report shows the general assessment category and the most frequently used specific initial assessments when paramedics use ALS no-contact criteria. This report does not include use of Comprehensive Standing Orders (CSO).

*Data Source: Central One*

ID#	Initial Assessment Category	Total	Percent
<b>Airway Problems</b>		<b>18</b>	<b>0%</b>
A04	Croup / Epiglottitis	1	0%
	All Others	17	0%
<b>Breathing Problems</b>		<b>494</b>	<b>10%</b>
B01 / B14	Pulmonary Edema / CHF	49	1%
B02	COPD	86	2%
B03	Asthma	47	1%
	All Others	312	6%
<b>Circulatory Problems</b>		<b>1,123</b>	<b>22%</b>
C01	Syncope	445	9%
C04	GI Bleeding	60	1%
C07	Hypovolemic Shock	20	0%
C08	Angina	267	5%
C09	R/O MI	19	0%
C10	Dysrhythmias	62	1%
	All Others	250	5%
<b>Delicate CNS</b>		<b>1,636</b>	<b>32%</b>
D01	Alcohol-related	142	3%
D02	Seizure (non-febrile)	395	8%
D05 / D06	Overdose / drug ingestion	236	5%
D07 / D23	CVA / TIA	361	7%
D24	Head trauma to PRC	29	1%
	All others	473	9%
<b>External Soft Tissue</b>		<b>64</b>	<b>1%</b>
E01	Burns (All categories)	54	1%
	All Others	10	0%
<b>Skeletal Injuries</b>		<b>184</b>	<b>4%</b>
F01 / F02 / F03	Suspected fractures	72	1%
F06	Strain / Sprain	70	1%
	All Others	42	1%
<b>GI / GU</b>		<b>242</b>	<b>5%</b>
G01 / G02	Abdominal pain	158	3%
G08	Flank / Groin Pain	10	0%
	All Others	74	1%
<b>Multiple System Problems</b>		<b>1,161</b>	<b>23%</b>
H01	Cardiopulmonary Arrest - Medical	3	0%
H20	Cardiopulmonary Arrest - Traumatic	-	0%
H03	Hypertension Crisis (DBP >120)	6	0%
H04 / H05	Diabetic Condition (Hyper or Hypo)	455	9%
H08	MTV to PRC	7	0%
H09	MTV / CTV to PTRC	4	0%
H10	General Weakness	439	9%
H15	Allergic Reaction	26	1%
H18	Hypotension (Unknown Etiology)	13	0%
	All Others	208	4%



**County of Orange  
Health Care Agency  
Health Disaster Management/Emergency Medical Services  
2nd Quarter 2006 (APR. - JUN.) SYSTEM ACTIVITY REPORT**



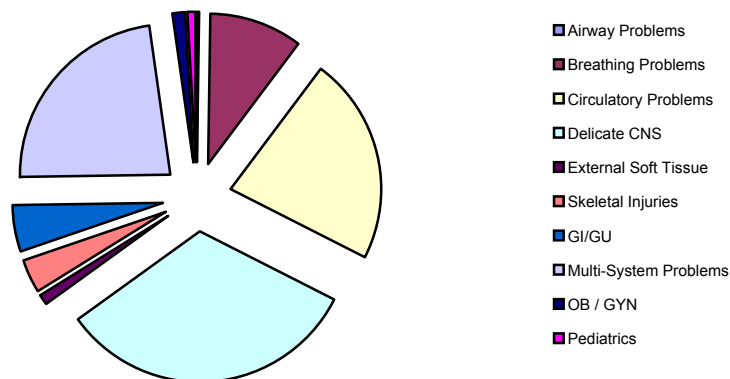
**Use of ALS No-Contact Criteria: Patient Assessment/Primary Suspected Problem (continued)**

<b>OB / GYN</b>		<b>72</b>	<b>1%</b>
I01	Vaginal Bleeding	12	0%
I04 / I05 / I07 / I11	Other OB-related	37	1%
I06	Field Delivery	5	0%
	All Others	18	0%
<b>Pediatric</b>		<b>45</b>	<b>1%</b>
J01	Suspected SIDS	-	0%
J03 / J04	Newborn	2	0%
J07	Febrile seizure	38	1%
	All Others	5	0%
	ALS No Contact IA Not Documented	<b>26</b>	<b>1%</b>
	<b>Total</b>	<b>5,065</b>	<b>100%</b>

**Initial Assessments Condensed**

**ALS No Contact Patient Assessment/Primary Suspected Problem: by Category**

<b>ID</b>	<b>Assessment Category</b>	<b>Total</b>	<b>Percent</b>
A	Airway Problems	18	0%
B	Breathing Problems	494	10%
C	Circulatory Problems	1,123	22%
D	Delicate CNS	1,636	32%
E	External Soft Tissue	64	1%
F	Skeletal Injuries	184	4%
G	GI/GU	242	5%
H	Multi-System Problems	1,161	23%
I	OB / GYN	72	1%
J	Pediatrics	45	1%
	<b>Total</b>	<b>5,065</b>	<b>100%</b>





**County of Orange  
Health Care Agency  
Health Disaster Management/Emergency Medical Services  
2nd Quarter 2006 (APR. - JUN.) SYSTEM ACTIVITY REPORT**

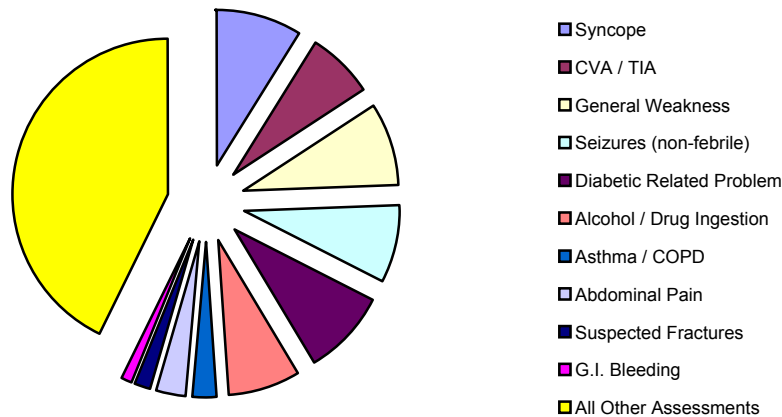


**By Assessment Category**

ALS No-Contact Criteria by Top Ten Assessment Categories

ID#	Initial Assessment	Total	Percent
1	C01 Syncope	445	9%
2	D07 / D23 CVA / TIA	361	7%
3	H10 General Weakness	439	9%
4	D02 Seizures (non-febrile)	395	8%
5	H04 / H05 Diabetic Related Problem	455	9%
6	D01 / D05 / D06 Alcohol / Drug Ingestion	378	7%
7	B02 / B03 Asthma / COPD	133	3%
8	G01 / G02 Abdominal Pain	158	3%
9	F01 / F02 / F03 Suspected Fractures	72	1%
10	C04 G.I. Bleeding	60	1%
	All Other Assessments	2,169	43%
<b>Total</b>		<b>5,065</b>	<b>100%</b>

**Initial Assessment Categories**





**County of Orange  
Health Care Agency  
Health Disaster Management/Emergency Medical Services  
2nd Quarter 2006 (APR. - JUN.) SYSTEM ACTIVITY REPORT**



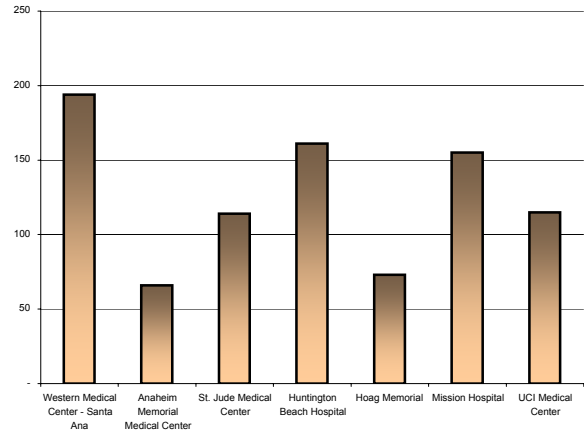
**Trauma Designations**

Patients sustaining either penetrating or blunt-force injuries meeting specified criteria are classified as either a critical trauma victim (CTV) or a moderate trauma victim (MTV) and are triaged to a specialty hospital approved by OCEMS to evaluate and treat these types of patients. (See OCEMS policy 310.30). *NOTE: THIS REPORT IS GENERATED ON DATA ENTERED INTO THE CENTRAL ONE DATABASE, NOT TRAUMA ONE.* This multi-part report summarizes:

**Trauma designations per Base Hospital / Paramedic Resource Hospital**

The number of ALS patients meeting trauma criteria designated by each base hospital and transported to a PTRC.

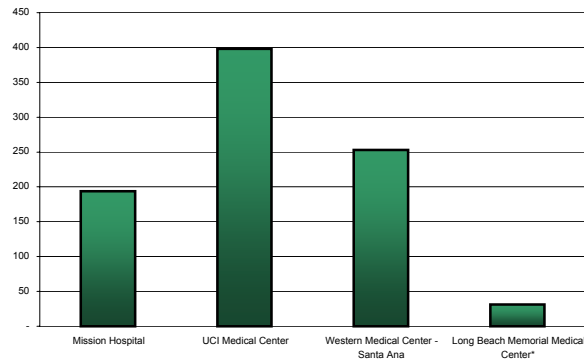
Base Hospital	Total	Percent
Western Medical Center - Santa Ana	194	22%
Anaheim Memorial Medical Center	66	8%
St. Jude Medical Center	114	13%
Huntington Beach Hospital	161	18%
Hoag Memorial	73	8%
Mission Hospital	155	18%
UCI Medical Center	115	13%
<b>Total</b>	<b>878</b>	<b>100%</b>



**Designated trauma patients received at each Paramedic Trauma Receiving Center (PTRC)**

The number of trauma patients received by each of the three Orange County trauma hospitals and one trauma hospital in LA County approved to receive OC EMS trauma patients.

Receiving Trauma Center	Total	Percent
Mission Hospital	194	22%
UCI Medical Center	398	45%
Western Medical Center - Santa Ana	253	29%
Long Beach Memorial Medical Center*	31	4%
No Transport / Released Signed	2	0%
Dead on Scene / Other	-	0%
<b>Total</b>	<b>878</b>	<b>100%</b>

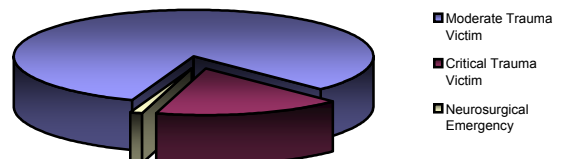


\*Hospital is located in Los Angeles County

**Categories / types of designated trauma patients directed to a PTRC**

The general classifications or types of trauma patients, designated by the base hospitals for transport to a PTRC. (\* Not Documented cases not included in overall percentage calculations.)

Trauma Patient Classification	Total	Percent
Moderate Trauma Victim	695	82%
Critical Trauma Victim	143	17%
Neurosurgical Emergency	10	1%
<b>Total</b>	<b>848</b>	<b>100%</b>





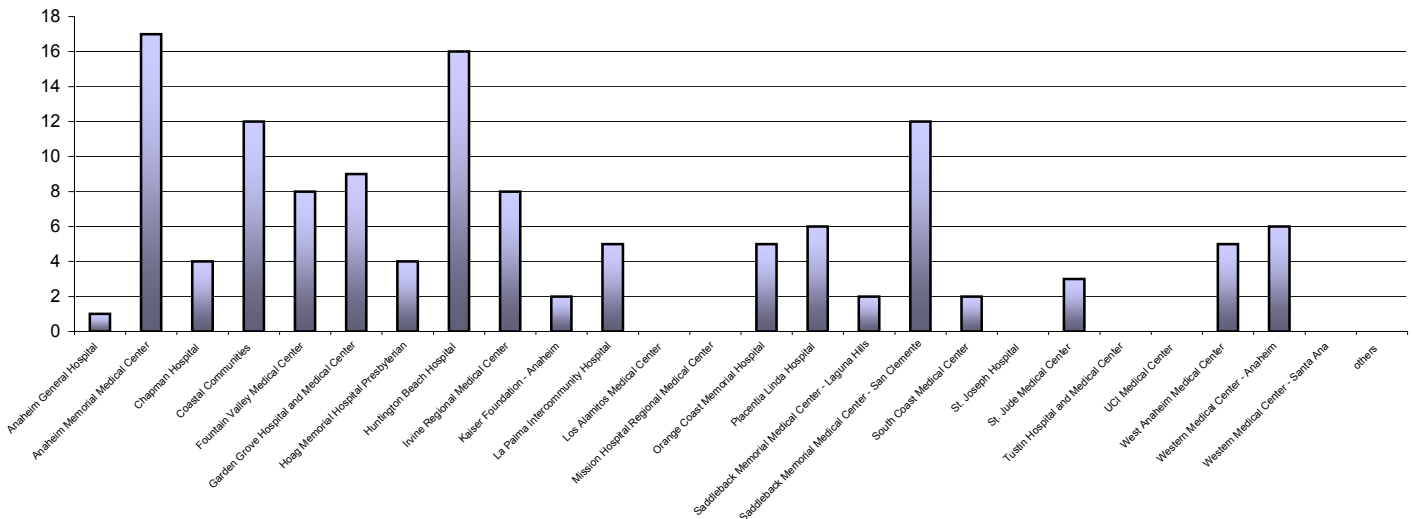
**County of Orange  
Health Care Agency  
Health Disaster Management/Emergency Medical Services  
2nd Quarter 2006 (APR. - JUN.) SYSTEM ACTIVITY REPORT**



**Interfacility Transfers via the 9-1-1 System**

This report lists the number of occasions in which paramedic receiving centers accessed the 9-1-1 system to utilize paramedics to monitor and escort patients to another acute care hospital for higher level of care, listed by sending facility and reason for transfer. (See OCEMS policy 670.10.) NOTE: INTERFACILITY TRANSFERS ARE ONLY PERFORMED AFTER THE PATIENT HAS BEEN MEDICALLY EVALUATED AND A PHYSICIAN HAS DETERMINED THAT THE PATIENT REQUIRES A SERVICE NOT AVAILABLE AT THE INITIAL FACILITY. FEDERAL TRANSFER GUIDELINES APPLY.

ID #	Paramedic Receiving Center	Total	IFT	CC	neuro-M	neuro-T	trauma	cardiac	vascular	OB	burn	peds	other
01	Anaheim General Hospital	1	1		1								
02	Anaheim Memorial Medical Center	17	17		5	4	8						
05	Chapman Hospital	4	4				2	1					ophth
15	Coastal Communities	12	12		3		7	1			1		
07	Fountain Valley Medical Center	8	8		4		4						
19	Garden Grove Hospital and Medical Center	9	9		3		5		1				
09	Hoag Memorial Hospital Presbyterian	4	3	1			4						
10	Huntington Beach Hospital	16	14	2			5	7			4		
39	Irvine Regional Medical Center	8	7	1	4	1	3						
04	Kaiser Foundation - Anaheim	2	2				1	1					
12	La Palma Intercommunity Hospital	5	5		1		3				1		
13	Los Alamitos Medical Center	0											
17	Mission Hospital Regional Medical Center	0											
38	Orange Coast Memorial Hospital	5	5		1		2	1	1				
20	Placentia Linda Hospital	6	6		2		3						NICU
21	Saddleback Memorial Medical Center - Laguna Hills	2	2				2						
24	Saddleback Memorial Medical Center - San Clemente	12	12		4		2	4					gyn; med
25	South Coast Medical Center	2	2				2						
22	St. Joseph Hospital	0											
23	St. Jude Medical Center	3	3		1	1	1						
26	Tustin Hospital and Medical Center	0	0										
27	UCI Medical Center	0	0										
28	West Anaheim Medical Center	5	4	1	1	1	2		1				
30	Western Medical Center - Anaheim	6	5	1	2	3	1						
29	Western Medical Center - Santa Ana	0											
	others	0											
<b>Total</b>		<b>127</b>	<b>121</b>	<b>6</b>	<b>32</b>	<b>10</b>	<b>57</b>	<b>15</b>	<b>3</b>	<b>4</b>	<b>2</b>	<b>0</b>	<b>4</b>
<b>Percent</b>		<b>100%</b>	<b>95%</b>	<b>5%</b>	<b>25%</b>	<b>8%</b>	<b>45%</b>	<b>12%</b>	<b>2%</b>	<b>3%</b>	<b>2%</b>	<b>0%</b>	<b>3%</b>



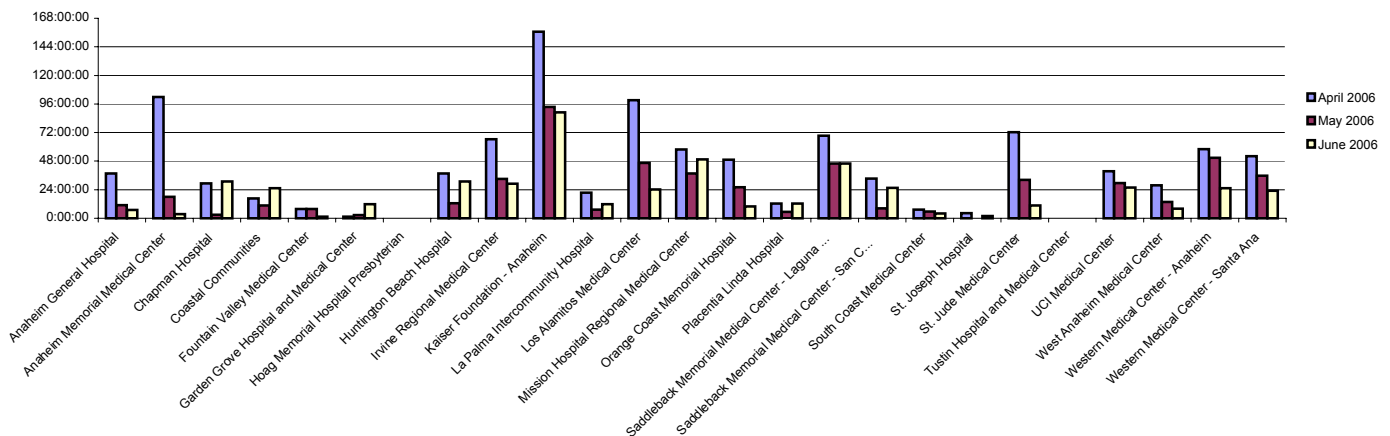


**County of Orange  
Health Care Agency  
Health Disaster Management/Emergency Medical Services  
2nd Quarter 2006 (APR - JUN.) SYSTEM ACTIVITY REPORT  
Hospital Diversion: Emergency Department Saturation**

This report reflects the total number of hours each paramedic receiving center requested that BLS and ALS ambulances be diverted to another acute care hospital due to Emergency Department Saturation.  
(See OCEMS policy 310.96). *Data Source: Reddinet*

NOTE: HOSPITALS COULD STILL RECEIVE BLS / ALS PATIENTS WHILE REQUESTING DIVERSION

ID #	Paramedic Receiving Center	April 2006	May 2006	June 2006	Total to Date
01	Anaheim General Hospital	37:30:00	10:54:00	6:53:00	55:17:00
02	Anaheim Memorial Medical Center	101:54:00	17:59:00	3:24:00	123:17:00
05	Chapman Hospital	29:18:00	2:59:00	31:01:00	63:18:00
15	Coastal Communities	16:40:00	10:53:00	25:08:00	52:41:00
07	Fountain Valley Medical Center	7:53:00	7:44:00	1:24:00	17:01:00
19	Garden Grove Hospital and Medical Center	1:22:00	2:37:00	11:42:00	15:41:00
09	Hoag Memorial Hospital Presbyterian	0:00:00	0:00:00	0:00:00	0:00:00
10	Huntington Beach Hospital	37:32:00	12:32:00	6:57:00	81:01:00
39	Irvine Regional Medical Center	66:19:00	32:59:00	29:08:00	128:26:00
04	Kaiser Foundation - Anaheim	156:47:00	93:29:00	88:56:00	339:12:00
12	La Palma Intercommunity Hospital	21:30:00	7:18:00	11:56:00	40:44:00
13	Los Alamitos Medical Center	99:13:00	46:33:00	24:13:00	169:59:00
17	Mission Hospital Regional Medical Center	57:52:00	37:32:00	49:27:00	144:51:00
38	Orange Coast Memorial Hospital	1:11:00	26:00:00	9:50:00	85:01:00
20	Placentia Linda Hospital	12:23:00	5:27:00	12:16:00	30:06:00
21	Saddleback Memorial Medical Center - Laguna Hills	69:15:00	45:54:00	45:56:00	161:05:00
24	Saddleback Memorial Medical Center - San Clemente	33:25:00	8:14:00	25:28:00	67:07:00
25	South Coast Medical Center	7:18:00	5:36:00	4:09:00	17:03:00
22	St. Joseph Hospital	4:26:00	0:00:00	2:00:00	6:26:00
23	St. Jude Medical Center	72:26:00	32:17:00	10:42:00	115:25:00
26	Tustin Hospital and Medical Center	0:00:00	0:00:00	0:00:00	0:00:00
27	UCI Medical Center	39:28:00	29:30:00	25:47:00	94:45:00
28	West Anaheim Medical Center	27:40:00	13:43:00	8:07:00	49:30:00
30	Western Medical Center - Anaheim	10:08:00	2:41:00	25:21:00	134:10:00
29	Western Medical Center - Santa Ana	52:07:00	35:45:00	23:00:00	110:52:00
<b>Total</b>		<b>1007:30:00</b>	<b>500:51:00</b>	<b>483:45:00</b>	<b>1992:06:00</b>
<b>Median</b>		<b>35:27:30</b>	<b>11:43:00</b>	<b>12:06:00</b>	<b>65:12:30</b>
<b>Mean</b>		<b>41:58:45</b>	<b>20:52:08</b>	<b>20:09:22</b>	<b>83:00:15</b>





**County of Orange**  
**Health Care Agency**  
**Health Disaster Management/Emergency Medical Services**  
**2nd Quarter 2006 (APR. - JUN.) SYSTEM ACTIVITY REPORT**



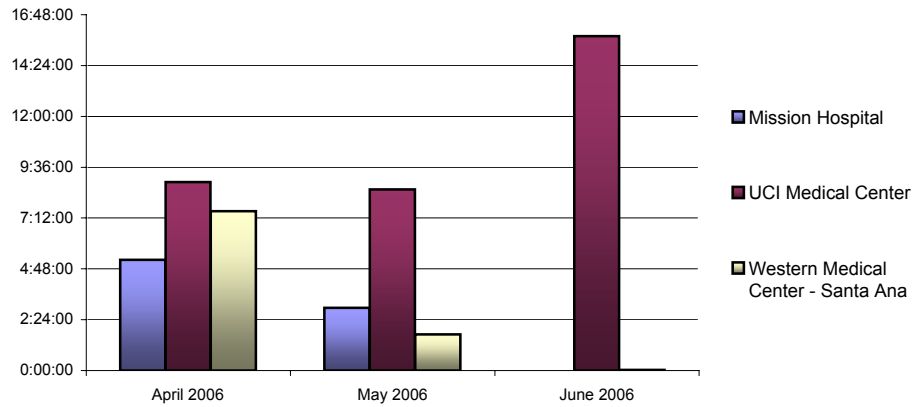
**Hospital Diversion: Trauma Centers (PTRC)**

This report reflects the total number of hours each Paramedic Trauma Receiving Center requested that ALS ambulances carrying trauma victims be diverted to another PTRC due to hospital trauma services saturation.

(See OCEMS policy 310.96). *Data Source: Reddinet*

ID #	Paramedic Trauma Center	April 2006	May 2006	June 2006	Total to Date
17	Mission Hospital	5:14:00	2:58:00	0:00:00	8:12:00
27	UCI Medical Center	8:54:00	8:33:00	15:47:00	33:14:00
29	Western Medical Center - Santa Ana	7:31:00	1:42:00	0:02:00	9:15:00
<b>Total</b>		<b>14:08:00</b>	<b>11:31:00</b>	<b>15:47:00</b>	<b>41:26:00</b>
<b>Median</b>		<b>8:54:00</b>	<b>8:33:00</b>	<b>15:47:00</b>	<b>33:14:00</b>
<b>Mean</b>		<b>8:54:00</b>	<b>8:33:00</b>	<b>15:47:00</b>	<b>33:14:00</b>

**Diversion Hours for Trauma Centers**





**County of Orange  
Health Care Agency  
Health Disaster Management/Emergency Medical Services  
2nd Quarter 2006 (APR. - JUN.) SYSTEM ACTIVITY REPORT**



**GLOSSARY of Terms and Abbreviations**

- ALS**                    Advanced Life Support. Services designed to provide definitive prehospital emergency medical care, administered by authorized personnel under the direct supervision of a base hospital as part of a local EMS system, at the scene of an emergency, during transport to an acute care hospital, during interfacility transfer, and while in the emergency department of an acute care hospital until responsibility is assumed by the emergency or other medical staff of that hospital.
- Airway Problems**                    Initial Assessment Codes A\_\_\_. This category identifies patients with airway problems including croup, epiglottitis, laryngospasm, injuries, aspirated emesis, and obstructions due to a foreign body.
- Air Ambulance**                    Any aircraft specially constructed, modified or equipped and used for the primary purposes of responding to emergency calls and transporting critically ill or injured patients whose medical flight crew has at a minimum two (2) attendants certified or licensed in advanced life support. (reference: California Code of Regulations, title 22, chapter 8, section
- ALS No-Contact**                    ALS interventions which the paramedic can perform in the absence of on-line medical control. (Reference: OCEMS Treatment Guideline I-40.)
- ALS Provider**                    An agency approved to provide ALS-level care.
- AMA**                    Against Medical Advice. Patient left against the advice of medical professional, but with their knowledge.
- Base Hospital**                    A paramedic receiving hospital, staffed with a Mobile Intensive Care Nurse (MICN) and Base Physician and equipped with radio equipment, which provides on-line medical support to assist paramedics in the care of a patient. Provides retrospective medical control through quality improvement activities, and offers training and education to ALS providers.
- BHR**                    Base Hospital Report. A standardized form on which Base Hospital personnel (MICN's) document the assessment and care of patients, including response to treatment, performed by paramedics in the prehospital setting.
- BLS**                    Basic Life Support. Emergency first aid and cardiopulmonary resuscitation procedures to maintain life without invasive techniques until the victim may be transported or until advanced life support is available.
- BLS Provider**                    An agency approved to provide BLS-level care.
- Breathing Problems**                    Initial Assessment codes B\_\_\_. This category identifies patients with breathing problems including asthma, emphysema (COPD), congestive heart failure (CHF), pulmonary edema, pneumonia, smoke inhalation, and chest injuries.



**County of Orange  
Health Care Agency  
Heath Disaster Management/Emergency Medical Services  
2nd Quarter 2006 (APR. - JUN.) SYSTEM ACTIVITY REPORT**



**Glossary: (Continued)**

- Burn Center** A hospital holding a permit from the Department of Health Services which is committed to provide specialty care to burn patients.
- CC** Call Continuation...means that the retriaging Paramedic Receiving Center (PRC) physician has determined that an Emergency Medical Technician-Paramedic (EMT-P) escorted critical patient requires the specialty capabilities of a designated specialty center and that the EMT-Ps are still on the premises, and that the retriaging physician may request that those EMT-Ps immediately transport the patient to the appropriate OCEMS designated specialty receiving center.
- Circulatory Problems** Initial Assessment codes C\_\_. This category identifies patients with circulatory-related problems including syncope, anaphylaxis, angina, possible myocardial infarction (R/O MI), internal bleeding (including GI bleeding), aneurysm, dysrhythmia, hypovolemia and cardiogenic shock
- CSO** Comprehensive Standing Orders. An expanded scope of practice in which paramedics can perform ALS interventions in the absence of on-line medical control. Provides additional interventions beyond those included in *ALS no-contact*. (Reference: Treatment Guideline I-40.)
- CTV** Critical Trauma Victim. Those patients with obvious, immediate need for paramedic trauma center level care as defined here: A victim of blunt or penetrating trauma, resulting in any of the following physical findings: respirations <12 or >30/minute, pulse <50 or >130/minute, systolic blood pressure <90 (adults) or <70 (pediatric patients); or penetrating injury to the neck, chest or abdomen; or blunt head injury with Glasgow coma score of <12, unequal pupils or focal neurologic deficit; or spinal cord injury with paralysis or paresthesia; or flail chest; or bilateral femur fractures.
- CVRC** Paramedic Receiving Center Hospital that has been designated by OCEMS to receive Field designated St Evaluation Myocardial Infarction patients.
- Delicate CNS** Initial Assessment codes D\_\_. This category identifies patients with alteration in (central nervous system) neurological status, including seizures (non-febrile), CVA (cerebrovascular accident) or TIA (transient ischemic attack), head trauma, spine injury, alcohol / drug / overdose related problems, anxiety and psychiatric issues.
- Diversion** A request by hospitals to temporarily close to ambulance-transported patients. Permitted reasons are: emergency department resources are totally committed; neuro services unavailable; trauma services unavailable; CT scanner unavailable; an internal problem affecting the physical plant (fire, electrical outage, flooding etc). (Reference: OCEMS Policy #670.10.)
- DOA** Dead On Arrival. The patient has no blood pressure, no respiratory rate, and no heart rate on arrival to the ED. For Orange County, patients with these vital signs are considered dead on arrival regardless of treatments they may received in the ED.



**County of Orange  
Health Care Agency  
Health Disaster Management/Emergency Medical Services  
2nd Quarter 2006 (APR. - JUN.) SYSTEM ACTIVITY REPORT**



**Glossary: (Continued)**

- External Soft Tissue**      Initial Assessment codes E\_\_\_. This category identifies patients with injuries including skin wounds, all types of burns, bites or stings, eye injury, and crush injury.
  
- GI / GU**                      Initial Assessment codes G\_\_\_. This category identifies patients with gastrointestinal or genitourinary-related problems, including abdominal pain, flank/groin pain, or injury to either of these two systems.
  
- IFT**                              Interfacility Transfer. Transport of a patient from one acute care facility to another acute care facility for higher level of care. Can be performed by ambulance with BLS personnel, Critical Care Transport ambulance with a Registered Nurse, or by paramedic by accessing the 9-1-1 system if an immediate need to transport.
  
- MICN**                            Mobile Intensive Care Nurse. A Registered Nurse, who has additional training on EMS protocols and who, in conjunction with the Base Hospital physician, provides on-line medical support to paramedics.
  
- MTV**                              Moderate Trauma Victim. Those patients with potential need for trauma center level-care. Situations or conditions include: mechanism of injury (ejection, falls >15', auto/pedestrian accidents, bicycle or motorcycle crash >20 mph) and other injuries or conditions, including blunt head injury with loss of consciousness >5 minutes, extremes of age, pregnancy >20 weeks, other
  
- Multiple System Problems**      Initial Assessment codes H\_\_\_. This category identifies patients with problems involving more than one body system, including: hyper- or hypotension, sepsis, hyper- or hypoglycemia, cardiopulmonary arrest, trauma, cancer, allergic reactions, medication reactions, and environmental emergencies.
  
- OB / GYN**                      Initial Assessment codes I\_\_ (Obstetrical/Gynecological). This category identifies patients with a pregnancy or gynecological-related problem, including pre-term or normal labor, field delivery, ectopic pregnancy, eclampsia, or sexual assault.
  
- On-line medical control**      ALS interventions provided under the direction of a physician. May be accomplished by use of radio communications or cellular phone.
  
- PRC**                                Paramedic Receiving Center. A hospital with a permit from the California Department of Health Services for basic or comprehensive emergency services which has been designated as a participant in the EMS system by the Orange County EMS Agency.
  
- Paramedic Resource Hospital**      A hospital that provides retrospective medical control through quality improvement activities and offers training and education to ALS providers. A paramedic resource hospital does not have a paramedic radio and therefore cannot provide on-line medical direction to ALS providers.
  
- PTRC**                              Paramedic Trauma Receiving Center. a.k.a. Trauma Center; A hospital, designated by OCEMS, which is committed to provide specialty care to trauma patients. In general, all patients designated as *critical trauma victims* and the majority of patients designated as *moderate trauma victims* will be transported to a trauma receiving center.



County of Orange  
Health Care Agency  
Health Disaster Management/Emergency Medical Services  
2nd Quarter 2006 (APR. - JUN.) SYSTEM ACTIVITY REPORT



Glossary: (Continued)

- PCR**                    Patient Care Report / Prehospital Care Report. A standardized form on which EMS service providers document the assessment and care of patients, including response to treatment, in the prehospital setting.
- Pediatric Emergency**    Initial Assessment codes J\_\_. This category identifies medical situations of pediatric-age patients (<8 years), including febrile seizure, sudden infant death syndrome (SIDS), normal or distressed newborns, apparent life-threatening events (ALTE), and possible child abuse/neglect.
- ReddiNet**                A computer-based communications system which allows hospitals to share information. Used to post a hospital's ability to accept additional ambulance transported patients. Also used during mass casualty incidents for patient assignment and patient tracking.
- Skeletal Injuries**        Initial Assessment codes F\_\_. This category identifies injuries to the skeletal system and includes strains and sprains, fractures, dislocations and amputations.