



CLINICIAN UPDATE, June 26, 2006

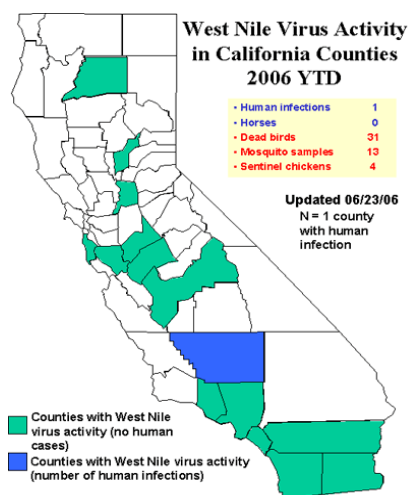
THE WEST NILE FILE



Orange County Health Care Agency, Epidemiology & Assessment, 1719 W. 17th St. Santa Ana, CA 92706, (714) 834-8180

The first human West Nile Virus (WNV) infection in California for 2006 has been reported from Kern County. In 2004 and 2005, the onsets of illness for the first reported WNV human cases in Orange County were in mid-June and early July, respectively. Consider West Nile Virus (WNV) infection in your patients with aseptic meningitis, encephalitis, or prolonged fever (> 7 days) and submit serology for WNV testing.

- **This year's first human WNV infection in California reported.** A 27-year-old Kern County resident became ill in mid-June and was still hospitalized as of June 22nd with West Nile Neuroinvasive Disease (WNND).
- **Study characterizes WNV infection in a cohort of 656 individuals.** In the July issue of *Emerging Infectious Diseases*, a report of the follow-up of WNV cases from Denver in 2003 identified several factors that may predispose infected persons to the development of encephalitis, including hypertension, diabetes, cancer, kidney disease, and history of chemotherapy. The report also highlights the severity of WNV infection. The mean length of stay for hospitalized WNV patients was 20 days for encephalitis patients, 10 days for meningitis patients and 7 days for West Nile Fever (WNF) patients. In addition, the median number of work days missed was 65 days for encephalitis patients, 51 days for meningitis patients and 16 days for WNF patients. To view the article, visit <http://www.cdc.gov/ncidod/EID/vol12no07/05-1399.htm>.



West Nile Virus – Orange County, California, & U.S.

- Human cases have been reported in California, Colorado, Mississippi, and Texas.
- As of June 23rd, WNV has been detected in 15/58 California Counties in 2006. Positive birds have been detected in Fresno, Orange, Sacramento, San Diego, San Mateo, Santa Clara, Shasta, Ventura and Yuba Counties. Positive mosquitoes have been detected in Fresno, Imperial, Los Angeles, Merced, Riverside and Stanislaus Counties. Sentinel chickens in Los Angeles have seroconverted for WNV.
- WN infection, WNF, WNND, meningitis, and encephalitis are all reportable diseases and should be reported within one working day to OC Epidemiology via phone (714-834-8180) or fax (714-834-8196).

Educate your patients, friends and family about WNV prevention -- avoiding mosquito bites:

- Eliminate standing water on your property as this is where mosquitoes breed. Drain pots, unclog gutters, and keep swimming pools clean and chlorinated or drained and covered.
- Make sure that door and window screens are in good condition to keep the mosquitoes out.
- When outdoors, use an insect repellent containing DEET, picaridin, or oil of lemon eucalyptus. Always follow the product directions on the label.
- For more information about prevention: www.ochealthinfo.com/epi/wnv/Repellent.pdf.

Recommended Resources

Orange County Health Care Agency:
www.ochealthinfo.com/epi/wnv

Orange County Vector Control District:
www.ocvcd.org or Ph: 714-971-2421
To report dead birds: X117

California Department of Health Services:
www.westnile.ca.gov

Centers for Disease Control and Prevention:
www.cdc.gov/ncidod/dvbid/westnile

If you have any comments about the flyer, contact John Janeski, MPH or Sandra Nutter, MPH at (714) 834-8180. To receive this newsletter by email, please contact us at epi@ochca.com.