



CLINICIAN UPDATE, August 4, 2006

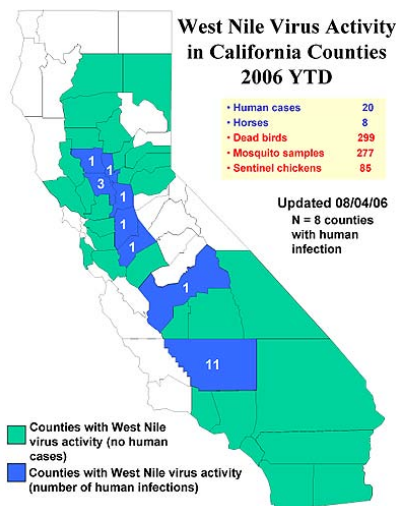
THE WEST NILE FILE



Orange County Health Care Agency, Epidemiology & Assessment, 1719 W. 17th St. Santa Ana, CA 92706, (714) 834-8180

Orange County has reported its first West Nile Virus (WNV) positive mosquito pool of the year. Human cases are expected at any time. Consider WNV infection in your patients with aseptic meningitis, encephalitis, flaccid paralysis, or prolonged fever (≥ 7 days) and submit serology for WNV testing.

- **Preventing West Nile Virus in the Workplace:** Recommendations by the National Institute for Occupational Safety and Health (NIOSH) for:
 - Protecting laboratory, field, and clinical workers: <http://www.cdc.gov/niosh/docs/2006-115/>.
 - Protecting outdoor workers: <http://www.cdc.gov/niosh/topics/westnile/recout.html>.
- **West Nile Virus and Children.** Although West Nile Neuroinvasive Disease (WNND) is more common in people 50 years and older, severe disease can occur at any age. Approximately 4% of WNV cases reported in CA are in children (Source: CDHS presentation, Seventh National Conference on West Nile Virus in the United States, San Francisco, California, February 23-24, 2006)
 - For information about insect repellent use on children: http://www.cdc.gov/ncidod/dvbid/westnile/qa/insect_repellent.htm.
 - The CDC has developed a kid friendly website about diseases and health which includes WNV information. To access BAM! (Body and Mind): http://www.bam.gov/sub_diseases/diseases_westnile.html.



2006 WNV – Orange County, California, & U.S.

- There have been no human cases confirmed in **Orange County**. Positive birds have been found throughout the county. The first positive mosquito pool was reported this week.
- **California** has reported 20 human cases from the following counties: Colusa (1), Fresno (1), Kern (11), Sacramento (1), San Joaquin (1), Stanislaus (1), Sutter (1), and Yolo (3)
- 36/58 **CA** counties have reported WNV activity, including 299 WNV-positive dead birds from 32 counties; 277 positive mosquito pools in 22 counties; 85 chickens with seroconversion from 8 counties; and 8 WNV infected horses from 6 counties.
- 87 human cases and 3 deaths have been reported to the CDC from mostly the Central and Southwestern **United States** as of August 1st.

Testing for West Nile Virus:

- **Preferred test: serum IgM and IgG for WNV.**
- WNV IgM may be negative early in the course of the disease and repeat serology may be indicated if initial testing was done in the first 10 days after onset of symptoms.
- A positive WNV IgG alone (in the absence of IgM) may represent prior infection with WNV or other cross-reacting flaviviruses, but does NOT rule out acute or recent infection with WNV if done in the 10 days after onset.
- Enterovirus is a more common cause of aseptic meningitis especially in children and CSF enterovirus PCR is available in some reference labs.

Recommended Resources

Orange County Health Care Agency:
www.ochca.com/epi/wnv

Orange County Vector Control District:
www.ocvcd.org or Ph: 714-971-2421
 To report dead birds: X117

California Department of Health Services:
www.westnile.ca.gov

Centers for Disease Control and Prevention:
www.cdc.gov/ncidod/dvbid/westnile

If you have any comments about the flyer, contact John Janeski, MPH or Sandra Nutter, MPH at (714) 834-8180. To receive this newsletter by email, please contact us at epi@ochca.com.