



CLINICIAN UPDATE, October 19, 2005

# THE WEST NILE FILE



Orange County Health Care Agency, Epidemiology & Assessment, 1719 W. 17th St. Santa Ana, CA 92706, (714) 834-8180

**Please remain vigilant for signs of West Nile Virus (WNV) infection in your patients.** Although the season is slowing down, WNV infection is still being diagnosed in humans and a large number of birds throughout Orange County. Consider WNV infection in your patients with aseptic meningitis, encephalitis, acute flaccid paralysis or prolonged fever ( $\geq 7$  days) and send serology (IgM, IgG) for WNV.

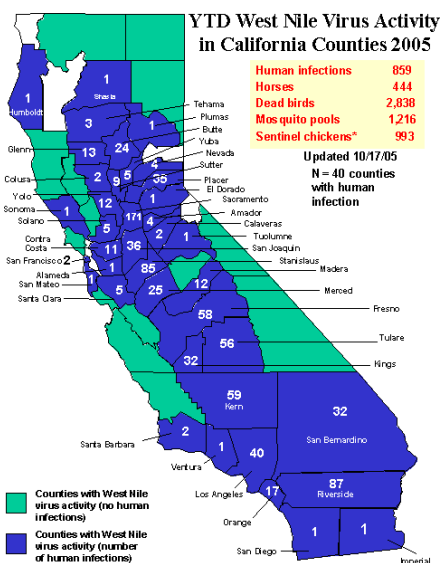
- **Transplant-associated West Nile Virus:** In September, WNV infection was confirmed in three of four recipients of organs transplanted from a common donor. Clinicians should be alert to the possibility of transplant-associated transmission of infectious diseases. Cases of suspected WNV infection through organ transplant should be reported promptly to Orange County Public Health at 714-834-8180 even before laboratory confirmation. For more information about recent transplant-associated WNV cases: <http://www.cdc.gov/mmwr/preview/mmwrhtml/mm54d1005a1.htm>

**Recommended Resources**

OC Public Health: [www.ochcahealthinfo.com/epi/wnv](http://www.ochcahealthinfo.com/epi/wnv)  
 OC Vector Control: [www.ocvcd.org](http://www.ocvcd.org) or 714-971-2421  
 California: [www.westnile.ca.gov](http://www.westnile.ca.gov) or 1-877-WNV-BIRD  
 USA: [www.cdc.gov/ncidod/dvbid/westnile](http://www.cdc.gov/ncidod/dvbid/westnile)

**West Nile Virus — Orange County 2005**

- There have been 17 WNV infections reported in Orange County (4 WNF, 13 WNND). This time last year there were 53 reported cases.
- WNV infection, aseptic meningitis and encephalitis are reportable diseases and should be reported to OC Epidemiology by phone 714-834-8180 or fax 714-834-8196 within one working day.

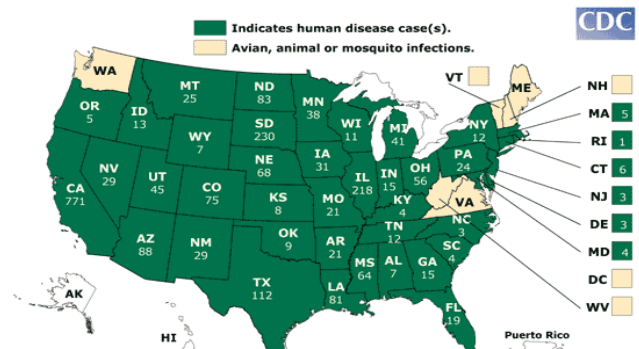


Select Counties	2005 # of Infections	2005 # with Symptoms	Reported Incidence of WNV per 100,000 pop.
Orange	17	17	0.60
Los Angeles	40	35	0.37
San Bernardino	32	30	1.75
Riverside	87	86	5.56
San Diego	1	1	0.04
Kern	59	58	8.77
Fresno	58	49	6.13
Stanislaus	85	78	17.45
Sacramento	171	157	12.83
<b>California</b>	<b>859</b>	<b>806</b>	<b>2.38</b>

**West Nile Virus — California and US 2005**

- As of October 18, 2005, 859 human WNV infections have been reported in California. Of the 806 symptomatic cases, 267 (33%) had WNND, 467 (58%) had WNF, and 72 (9%) were unspecified. The median age for all symptomatic cases where data is available is 50 years (range, 2-95 years). Fifty-five percent of the cases are male.
- There have been 18 WNV-related fatalities this year in California (median age: 79 years).
- 2316 human WNV cases from 42 states were reported to the CDC as of October 18, 2005.

**2005 West Nile Virus Activity in the US (Reported to CDC as of October 18, 2005)**



If you have any comments about the flyer, contact Michele Cheung, MD MPH or Sandra Nutter, MPH at (714) 834-8180. To receive this newsletter by email, please contact us at [epi@ochca.com](mailto:epi@ochca.com).