

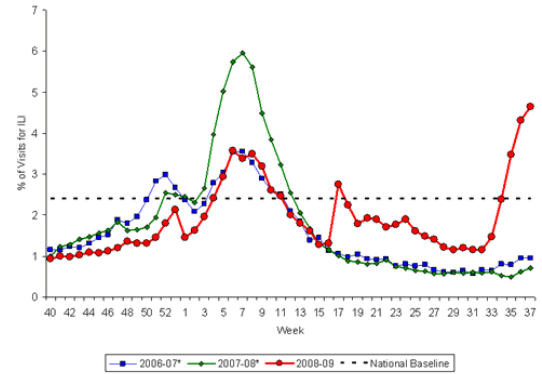


Orange County Health Care Agency, Epidemiology & Assessment, 1719 W. 17<sup>th</sup> St., Santa Ana, CA 92706, (714) 834-8180

## Influenza Update

- **Influenza activity widespread in California.** Outpatient visits to sentinel providers for influenza-like illness (ILI) continue to increase (right graph) and 26 states including California are reporting widespread activity. See [www.cdc.gov/flu](http://www.cdc.gov/flu).
  - **Now is the time to start vaccinating for seasonal influenza.** See [www.ochealthinfo.com/public/flu/](http://www.ochealthinfo.com/public/flu/).
  - **Orange County (OC) influenza update:** See [www.ochealthinfo.com/h1n1](http://www.ochealthinfo.com/h1n1) for the latest report on hospitalized cases and fatalities. Nearly 100% of influenza tested at the OC Public Health Laboratory in the past 3 months has been pH1N1. Reports of influenza-like illness in the community are increasing.
  - **CDC updates antiviral recommendations for influenza.** Priority for antiviral use continues to be in people with suspect or confirmed influenza who are hospitalized or at increased risk for complications, and emphasis is on early treatment. Additional guidance is provided on:
    - The risk of complications of influenza and treatment considerations for children under the age of 5 years, with focus on those younger than age 2 years who have the highest risk for hospitalization;
    - Neurologic or neuromuscular conditions that increase the risk of influenza complications;
      - High risk conditions include cognitive dysfunction, spinal cord injuries, seizure disorders or other neuromuscular disorders that can compromise respiratory function or the handling or respiratory secretions, or that can increase the risk of aspiration.
    - The use of the oral dosing dispenser included with the Tamiflu® (oseltamivir) oral suspension.
      - Since the oral dosing dispenser included in the suspension packaging is marked in milligrams, there is serious potential for dosing errors in children prescribed dosing in teaspoons (tsp) or milliliters (mL). Pharmacists should:
        - Remove the oral dosing dispenser included in the packaging for children < 1 year of age and children for whom the dosing instructions specify tsp or mL;
        - Replace the dispenser with an appropriate measuring device to match the dosing instructions.
- See [www.cdc.gov/h1n1flu/recommendations](http://www.cdc.gov/h1n1flu/recommendations) and <http://www.cdc.gov/H1N1flu/pharmacist/>.
- **WHO reports on situations in which risk of antiviral resistance may be increased.** Clinicians should watch for resistance in 1) persons with severely compromised or suppressed immune systems who have prolonged illness and have received oseltamivir (especially for a long time) but still have evidence of viral replication; and 2) people who receive post-exposure prophylaxis with oseltamivir and still develop illness. See <http://www.who.int/csr/disease/swineflu/en/>.
  - **WHO recommends changes for H1N1 and H3N2 components of Southern Hemisphere 2010 influenza vaccine.** Based on predominant strains circulating this past summer in the Southern Hemisphere, WHO has recommended including pandemic H1N1 and A/Perth/16/2009-like (H3N2) in next season's vaccine. The majority of recent H3N2 viruses (A/Perth) also do not match the H3N2 component of this season's Northern Hemisphere vaccine. See <http://www.who.int/csr/disease/influenza/en/>.

Percentage of Visits for Influenza-like Illness (ILI) Reported by the US Outpatient Influenza-like Illness Surveillance Network (ILINet), National Summary 2008-09 and Previous Two Seasons



\*There was no week 53 during the 2006-07 and 2007-08 seasons, therefore the week 53 data point for those seasons is an average of weeks 52 and 1.

### Pandemic influenza H1N1 vaccine update

- **Preliminary data from trials in children suggest older children may need just one dose but those under age 10 will likely need two.** See [www.cidrap.umn.edu](http://www.cidrap.umn.edu) (9/21/09 news).
- **First available pandemic H1N1 vaccine doses likely to be nasal-spray product (live, attenuated) in early October,** with additional doses available by mid-October and weekly thereafter. **For local H1N1 vaccine questions:** 714-834-8560 or [www.ochealthinfo.com/h1n1](http://www.ochealthinfo.com/h1n1).
- **To pre-register and order pandemic H1N1 vaccine:** [www.calpanflu.org](http://www.calpanflu.org).

*If you have any comments about this flyer, contact Michele Cheung, MD MPH, at (714) 834-8180.  
To receive this newsletter by email, please contact us at [epi@ochca.com](mailto:epi@ochca.com).*