

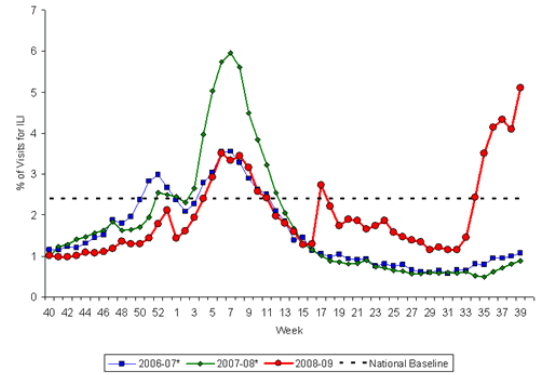


Orange County Health Care Agency, Epidemiology & Assessment, 1719 W. 17th St., Santa Ana, CA 92706, (714) 834-8180

Influenza Update

- **Influenza activity increasing.** Outpatient visits to sentinel providers for influenza-like illness (ILI) continue to increase (red line on graph on right). Widespread activity was reported in 37 states. The proportion of deaths attributed to pneumonia and influenza has increased. See www.cdc.gov/flu.
- **Seasonal influenza vaccine.** For updates and locations of clinics, see www.ochealthinfo.com/public/flu.
- **Orange County (OC) influenza update:** As of 10/3/09, 253 hospitalized cases of pandemic H1N1, including 82 (32%) needing intensive care, and 22 deaths have been reported. Starting next week, we will only be reporting intensive care unit (ICU) and fatal cases on our website and in our updates. See www.ochealthinfo.com/h1n1.
- **CDC partners with Emory University School of Medicine to create triage algorithm for adults with influenza-like illness (for use by healthcare professionals only).** See <http://www.cdc.gov/h1n1flu/clinicians/pdf/adultalgorithm.pdf>.
- **On-line self-assessment available to help adults with possible influenza:** <http://www.flu.gov/evaluation/>
- **FDA authorizes use of certain lots of expired Tamiflu® for Oral Suspension as part of response to the 2009 H1N1 public health emergency.** FDA has conducted scientific testing and analysis to assure that these lots can be used beyond their expiration date. The lots authorized to be used beyond their expiration date are not required to be relabeled therefore healthcare professionals will need to be able to explain this to patients. To verify a specific lot has been authorized for use beyond its expiration date, see <http://www.fda.gov/NewsEvents/PublicHealthFocus/ucm154962.htm>.
- **Infectious Diseases Society of America (IDSA) updates policy on mandatory universal immunization of health care workers against influenza (both seasonal and 2009 H1N1).** IDSA recommends that employees who cannot be vaccinated due to medical contraindications or because of vaccine supply shortages, or who sign a written declination choosing not to be vaccinated for religious reasons be required to wear masks or be re-assigned away from direct patient care. See <http://www.idsociety.org/redirector.aspx?id=15413>.
- **Hospitalized U.S. 2009 H1N1 influenza patients summarized.** Of the 272 patients hospitalized between April-June 2009 included in the summary, 25% were admitted to an ICU and 7% died. Almost half (45%) of the hospitalized patients were children while only 5% were aged 65 years or older. Seventy-three percent had underlying medical conditions. See www.nejm.org early on-line publication 10/8/09. Summary of ICU cases from Australia and New Zealand also available.
- **US Equal Employment Opportunity Commission issues guidance on pandemic preparedness and the Americans with Disabilities Act.** See http://www.eeoc.gov/facts/pandemic_flu.html.
- **New "Flu Myths and Facts" page:** <http://flu.gov/myths/index.html>.

Percentage of Visits for Influenza-like Illness (ILI) Reported by the US Outpatient Influenza-like Illness Surveillance Network (ILINet), National Summary 2008-09 and Previous Two Seasons



*There was no week 53 during the 2006-07 and 2007-08 seasons, therefore the week 53 data point for those seasons is an average of weeks 52 and 1.

Pandemic influenza H1N1 vaccine update

- **First pandemic H1N1 vaccine doses (live attenuated nasal spray) arrived in Orange County this week; additional doses, both nasal and injectable, are expected each week.** For local H1N1 vaccine questions: 714-834-8560 or www.ochealthinfo.com/h1n1. To order vaccine: www.calpanflu.org.
- **Update on influenza A (H1N1) 2009 monovalent influenza vaccines (MIV).** Children aged 6 months-9 years should receive two (2) doses, separated by approximately four weeks; persons 10 years and older should receive one (1) dose. Approved age groups for use of the three FDA-approved inactivated MIVs (injectable form) vary by manufacturer. See www.cdc.gov/mmwr (10/9/09 issue) for summary table. 2009 (H1N1) live attenuated vaccine is licensed for healthy non-pregnant persons aged 2-49 years.

*If you have any comments about this flyer, contact Michele Cheung, MD MPH, at (714) 834-8180.
To receive this newsletter by email, please contact us at epi@ochca.com.*