

OVERVIEW OF CURRENT SITUATION (4/21/21 1021) Source: Johns Hopkins University & Medicine <https://coronavirus.jhu.edu/map.html>

Cases / Deaths
 Worldwide: 143,151,998 / 3,048,296
 Nationwide: 31,804,023 / 568,600
 California: 3,723,446 / 661,122
 Orange Co: 253,206 / 4,902 Source: [Orange County COVID-19 Case Counts & Testing Figures](#)

ORANGE COUNTY PUBLIC HEALTH (as of 4/21/21 0937)

[Orange County COVID-19 Summary* click for full details](#)

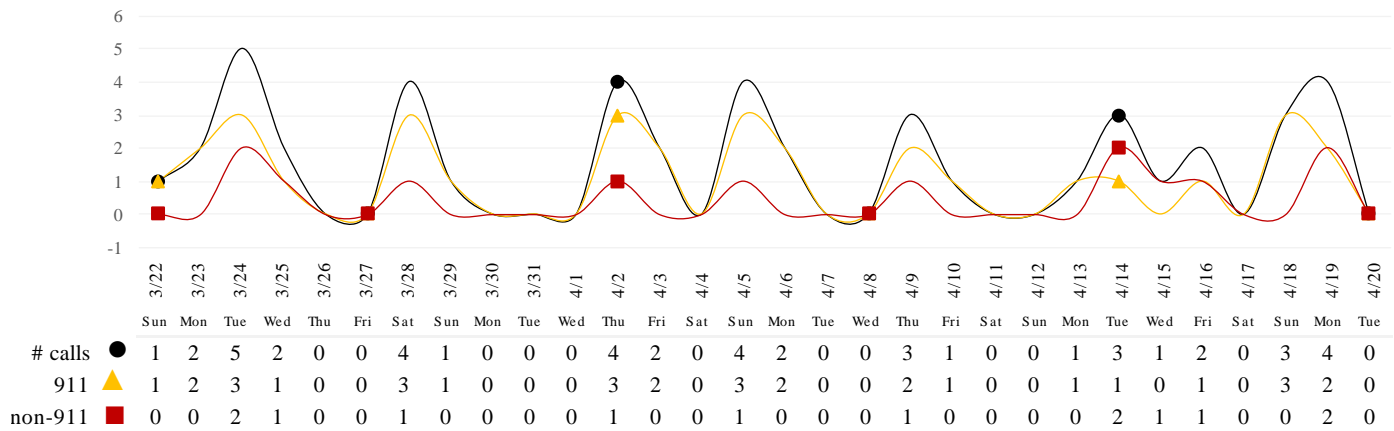
	Thu 4/15/21	Fri 4/16/21	Sat 4/17/21	Sun 4/18/21	Mon 4/19/21	Tues 4/20/21	Wed 4/21/21
Cases Reported to Date	252,692	252,804	252,884	252,963	253,026	253,153	253,206
Deaths Reported to Date	4,869	4,886	4,891	4,896	4,896	4,900	4,902
Tests Reported Today	15,496	11,463	12,627	8,032	6,193	5,994	13,473
Cumulative Tests to Date	3,510,285	3,521,748	3,534,375	3,542,407	3,548,600	3,554,594	3,568,067

*Data posted is always preliminary & subject to change. More information may become available as individual case investigations are completed. **LOCAL DATA MAY BE DIFFERENT FROM THE STATE WEBSITE DATA.**

SKILLED NURSING/ASSISTED LIVING/RESIDENTIAL CARE FACILITY – TRENDS

*Data Source: Orange County Medical Emergency Data System (OC-MEDS) – Updated 4/20/21

Calls to SNFs/Congregate Living with Primary Impressions: Fever/Cough, Influenza-like Illnesses
 (Transports to ERCs Only - Last 30 Days)



3/17: Row headers for 911 and non-911 were switched to accurately reflect the item being reported. Total number of calls did not change.

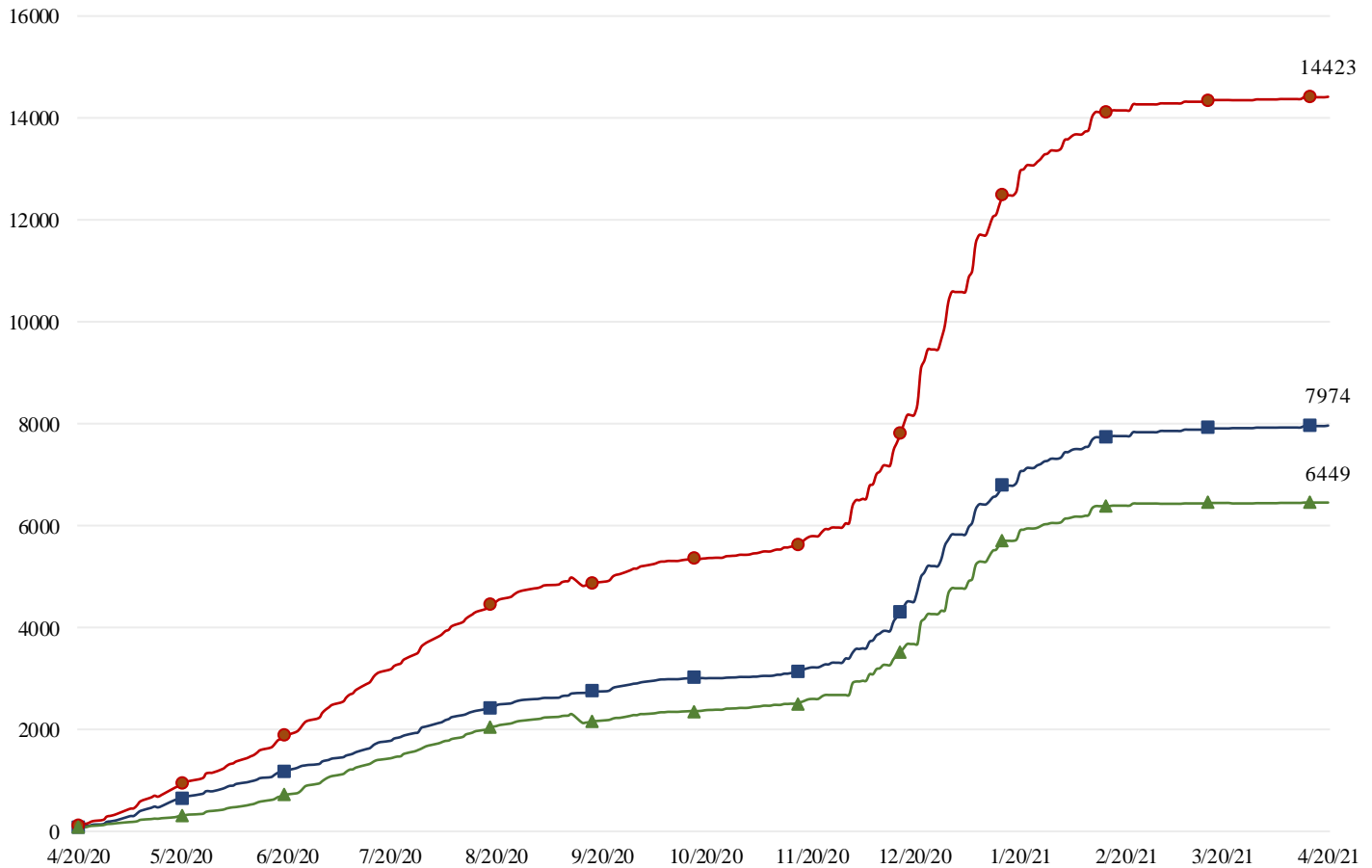
*Data Source: California Department of Public Health (CDPH)

Skilled Nursing/Assisted Living/Residential Care Facility PPE / Ventilator Supplies Days on Hand
 (72/73 SNFs reported)

Reporting Date: 4/20/2021	0 - 3 days	4 - 7 days	8-14 days	15+ days
N95 Masks	0	1	14	57
Surgical Masks	0	1	12	59
Eye Protection	0	1	13	58
Gowns	0	1	11	60
Gloves	0	2	12	58
Alcohol-Based Hand Sanitizer	0	2	13	57

*Data Source: Orange County Health Care Agency – Public Health – 4/20/21

COVID+ in Congregate Healthcare*



NOTE: Decrease in the COVID + in staff seen on graph is due to data being cleaned and removing duplicates of those that work in multiple OC facilities or are contract staff and care for residents at multiple facilities.

Resident COVID+ ■ Staff COVID+ ▲ Total ●

*Data Source: Orange County Health Care Agency – Public Health

Current Facility Outbreaks (as of 4/20/21 1000)

An "Outbreak" is two (2) or more confirmed cases of COVID-19 in facility occurring within 14 days.

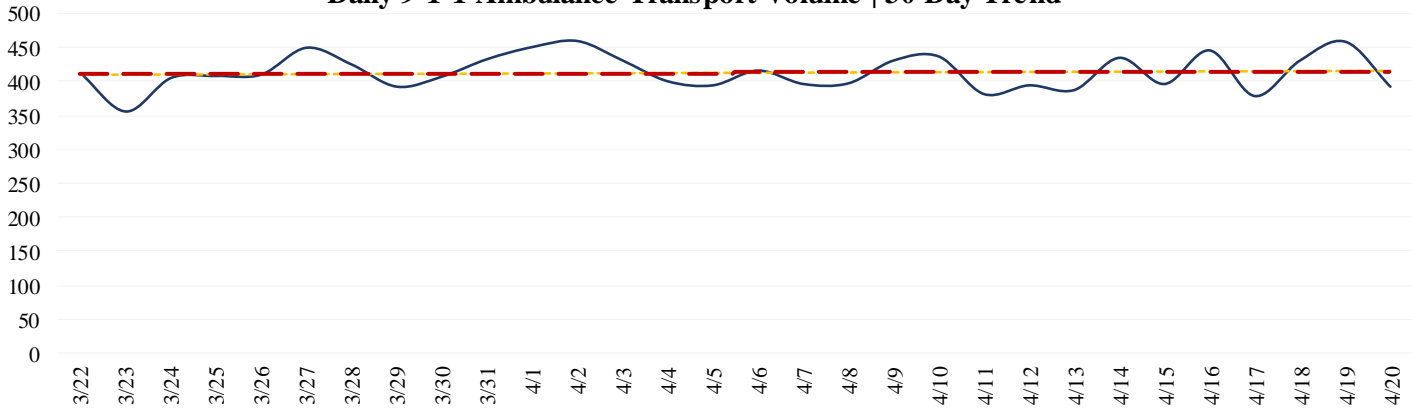
Facility Type by Licensing Category, Count	Facility Name Alphabetical
Skilled Nursing Facility 0	
Elderly Assisted Living 0	

EMERGENCY MEDICAL SERVICES STATUS

*Data Source: Orange County Medical Emergency Data System (OC-MEDS)

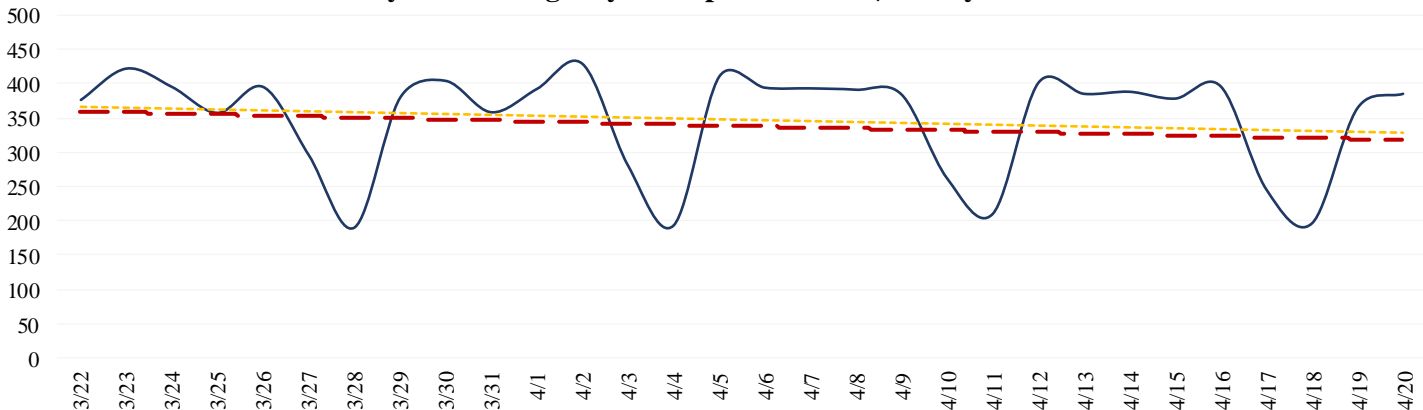
9-1-1 ambulance transport volume **has been trending slightly upward over the last few weeks**. Volume continues to average about **5-10% below normal** (pre-COVID) levels (Updated 04/21/21).

Daily 9-1-1 Ambulance Transport Volume | 30 Day Trend

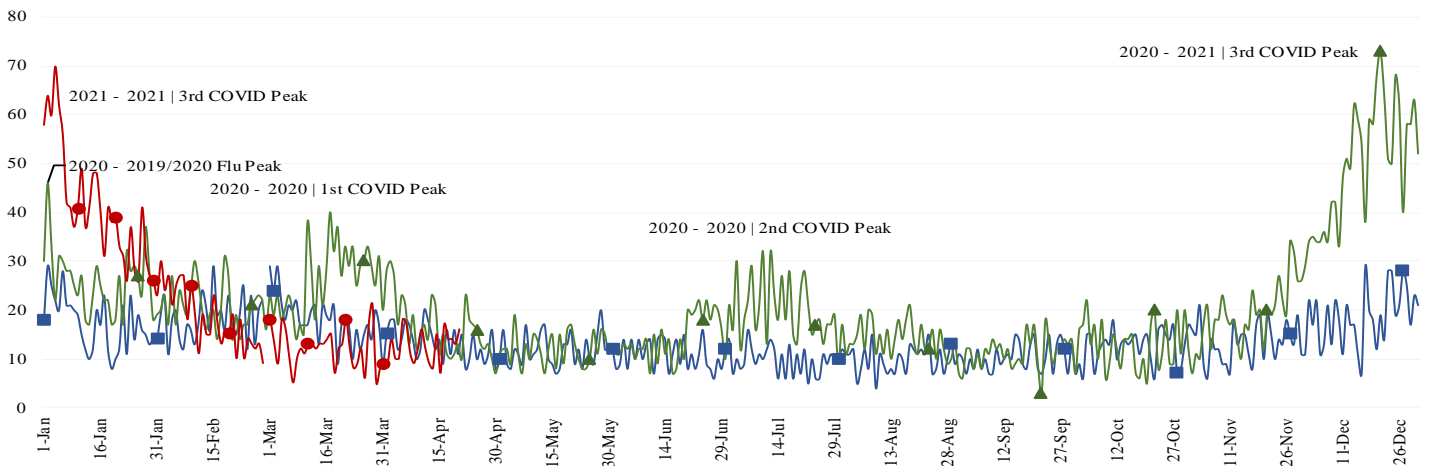


Non-emergency ambulance transports **have remained steady** over the last few weeks. Transport volume **continues to average about 30%** below normal (pre-COVID) levels overall (Updated 04/21/21).

Daily Non-Emergency Transport Volume | 30 Day Trend



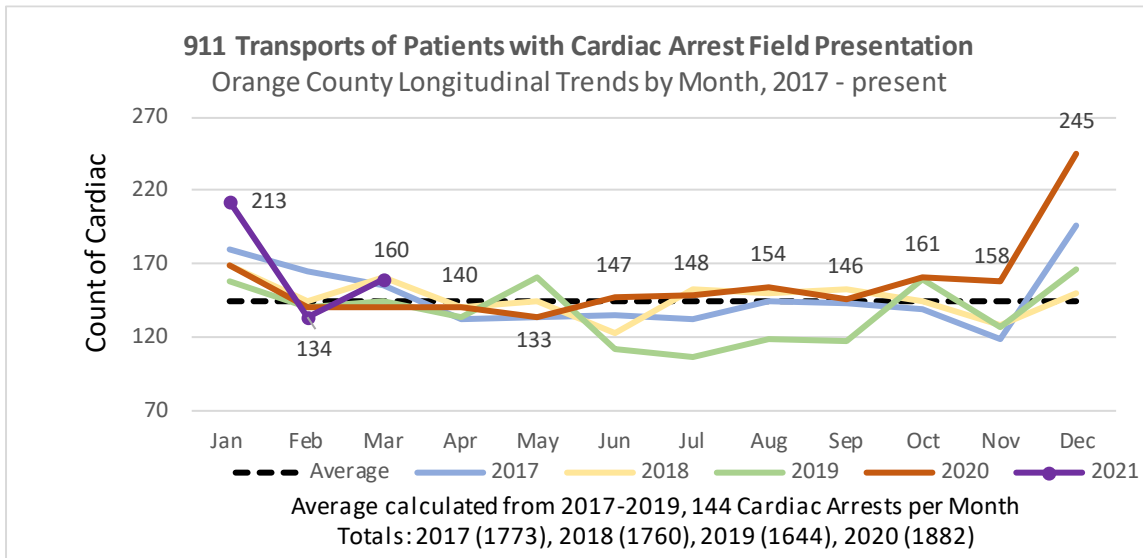
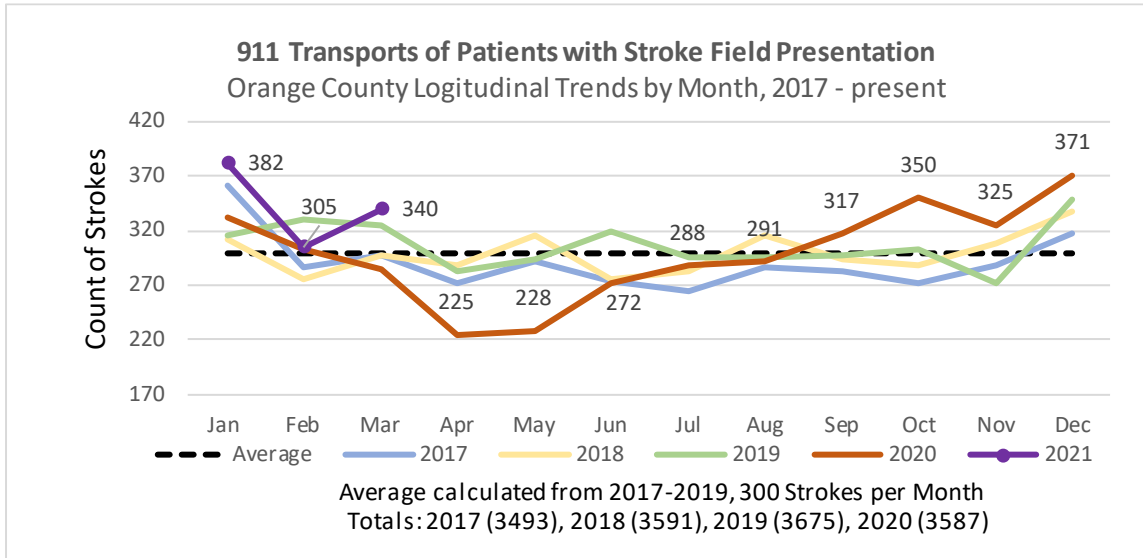
Primary Impressions of Cold/Flu/ILI by 9-1-1 EMS **have increased slightly over the last week, but continue to be near normal baseline levels** for this time of year. (Updated 04/21/21).

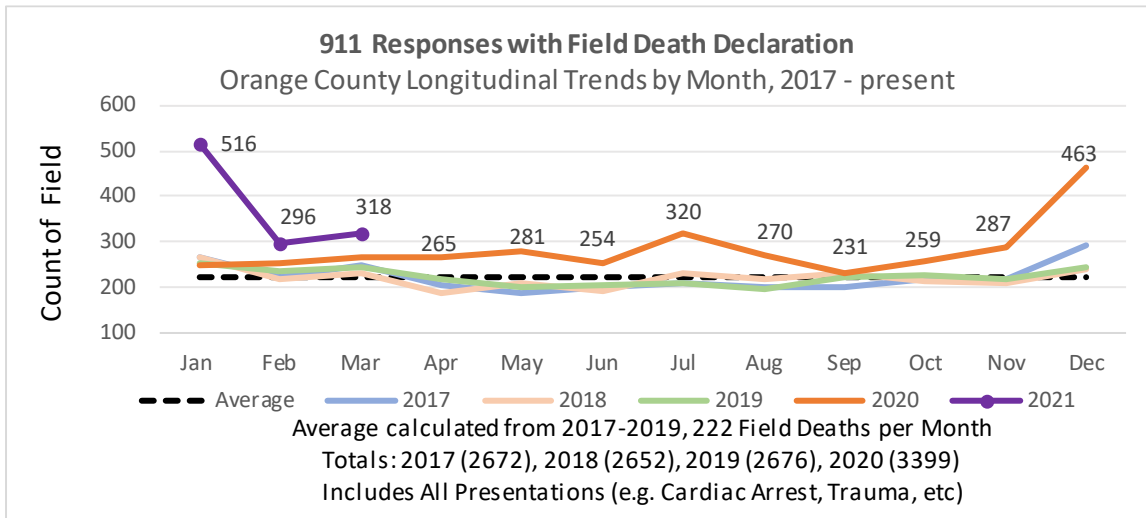


EMS Provider Impressions - Cold/Flu/ILI/COVID-19 Year Over Year Comparison (2019 ■, 2020 ▲, & 2021 ●)

911 EMS SYSTEM MONITORING

*Data Source: Orange County Medical Emergency Data System (OC-MEDS)





Summary Data Table for Chart, “911 Responses with Field Death Declaration”

	2017	2018	2019	2020	2021
January	268	267	254	250	516
February	224	216	235	254	296
March	248	233	245	265	318
April	206	186	220	265	
May	186	210	202	281	
June	201	190	205	254	
July	211	233	208	320	
August	201	218	195	270	
September	199	233	222	231	
October	217	213	227	259	
November	217	211	217	287	
December	294	242	246	463	
Total	2378	2410	2430	3399	

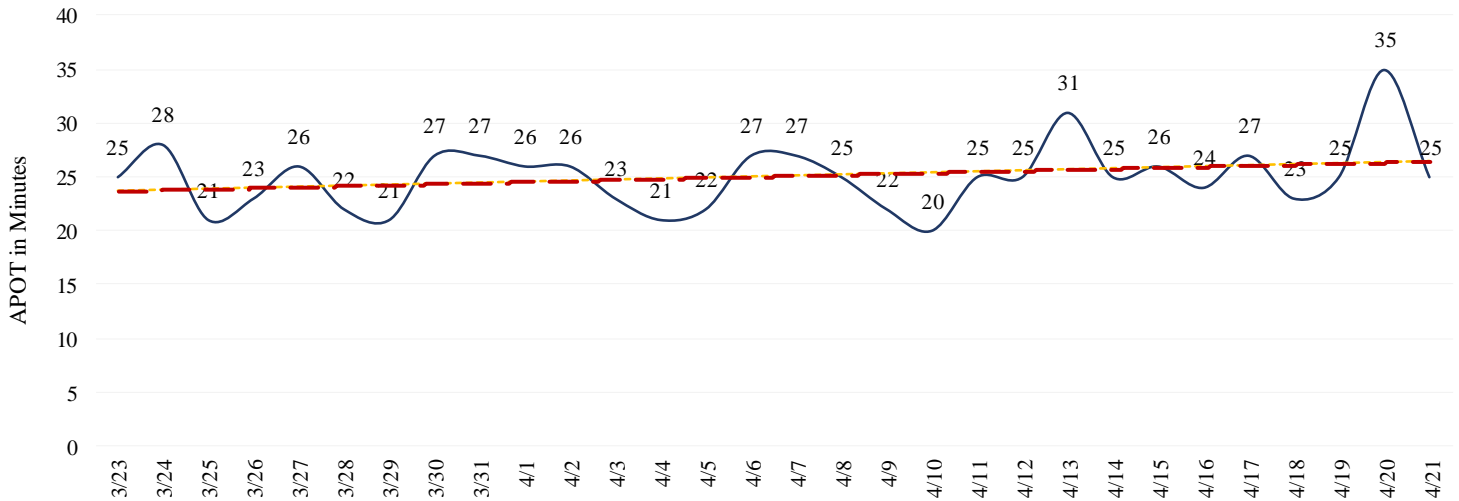
- Ambulance Patient Offload Time (APOT) is defined as the time the ambulance arrives at the receiving destination (wheels stop) to the time that the ambulance crew physically transfers the patient to the ED gurney. Last 24 hours: **Current Average APOT is: 12m18s / Current 90th Percentile APOT is: 25m40s**

- Seven (7) ERCs had APOT times greater than thirty (30) minutes.
- Zero (0) ERCs had APOT times greater than sixty (60) minutes.

The chart below displays a daily trend over the last 30 days.

*Data Source: Orange County Medical Emergency Data System (OC-MEDS) – Updated 4/21/21

COVID 19 - APOT 90th percentile | Daily Trend

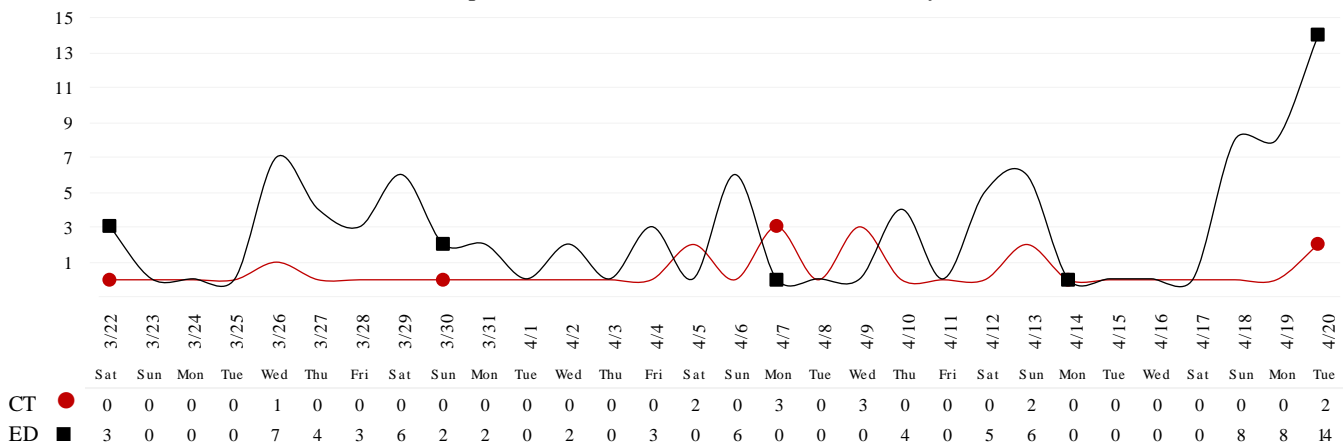


Note: a handful of ERCs were close to the 30 minute threshold, but were not over it.

- Emergency Department (ED) Diversion & Computerized Tomography (CT) (ED closed to all ambulance transport due to no ED capacity or no CT available) for the last 30 days.
- NOTE: Suspension of Hospital Diversion was reinstated, 1/4/21, @ 1900.**
- NOTE: Hospital Diversion was reinstated on 1/25/21 @ 1900.**

*Data Source: Orange County Medical Emergency Data System (OC-MEDS) – Updated 4/20/21

Hours of Diversion per 24-Hour Period
 (25 Hospitals, rounded to nearest hour - Last 30 Days)



04/21/21

26): Anaheim Regional, Anaheim Global, Chapman Global, CHOC, CHOC at Mission, Foothill, Fountain Valley, Garden Grove, Hoag-Irvine, Hoag-Newport Beach, Huntington Beach, Kaiser-Anaheim, Kaiser-Irvine, La Palma, Los Alamitos, Mission-Laguna Beach, Mission-Mission Viejo, Orange Coast Memorial, Orange County Global, Placentia Linda, Saddleback Memorial, Saint Jude, South Coast Global, St. Josephs, UCI, West Anaheim

*Data Source: California Department of Public Health (CDPH) – Snowflake server
 Current Snowflake Data Dictionary may be found at:

https://www.calhospital.org/sites/main/files/file-attachments/data_dictionary_cha_covid_tracker_4-17-20.pdf

33 HOSPITALS

Date	Census All System	Occupancy % System	COVID+ Hospitalized System	COVID+ Hospitalized ICU Only (Adult & Peds)	% COVID+ hospitalized of ICU Occupied (Adult & Peds)	ICU Occupied (Adult & Peds)**	ICU Available (Adult & Peds)***	% ICU Available (Adult & Peds)****	ICU by Patient Age Group						% Ventilators Available
									Adult Occupied	Adult Available	Adult % Available	Pediatric Occupied	Pediatric Available	Pediatric % Available	
4/7	3533	67%	113	28	6%	431	240	36%	406	198	33%	25	42	63%	70%
4/8	3686	70%	114	32	7%	429	251	37%	407	204	33%	22	47	68%	72%
4/9	3702	69%	125	33	8%	425	258	38%	398	216	35%	27	42	61%	72%
4/10	3419	66%	124	25	6%	406	253	38%	384	208	35%	22	45	67%	71%
4/11	3307	64%	120	29	7%	410	251	38%	390	204	34%	20	47	70%	70%
4/12	3226	63%	115	31	8%	412	267	39%	393	219	36%	19	48	72%	71%
4/13	3357	65%	122	30	7%	413	262	39%	390	218	36%	23	44	66%	70%
4/14	3480	66%	125	29	7%	394	271	41%	375	223	37%	19	48	72%	71%
4/15	3501	67%	135	29	7%	408	262	39%	387	216	36%	21	46	69%	73%
4/16	3531	67%	134	25	6%	410	260	39%	389	214	35%	21	46	69%	72%
4/17	3460	66%	124	23	6%	413	258	38%	391	213	35%	22	45	67%	74%
4/18	3354	64%	128	22	6%	390	273	41%	367	229	38%	23	44	66%	73%
4/19	3377	64%	113	25	7%	378	276	42%	352	235	40%	26	41	61%	73%
4/20	3479	66%	110	23	6%	399	259	39%	373	218	37%	26	41	61%	74%

ICU occupied PREVIOUSLY ICU CDPH OC Occupied – CDPH combines occupied ICU adult beds and occupied ICU pediatric beds as a reporting metric on their COVID-19 Hospital dashboard. *ICU Available PREVIOUSLY ICU CDPH OC Available – CDPH subtracts the sum of occupied ICU adult beds and occupied ICU pediatric beds, from the sum of ICU total adult beds and ICU total pediatric beds to determine ICU available beds on their COVID-19 Hospital dashboard. ****%ICU AVAILABLE PREVIOUSLY % ICU CDPH OC Available – The sum of occupied ICU adult beds and occupied ICU pediatric beds, divided by the sum of ICU total adult beds and ICU total pediatric beds, as a percentage. *****%COVID+ hospitalized of ICU Occupied PREVIOUSLY % ICU Beds System Available – All ICU beds reported as available in Orange County, which includes Adult, PICU, and NICU, and any other ICU bed types.

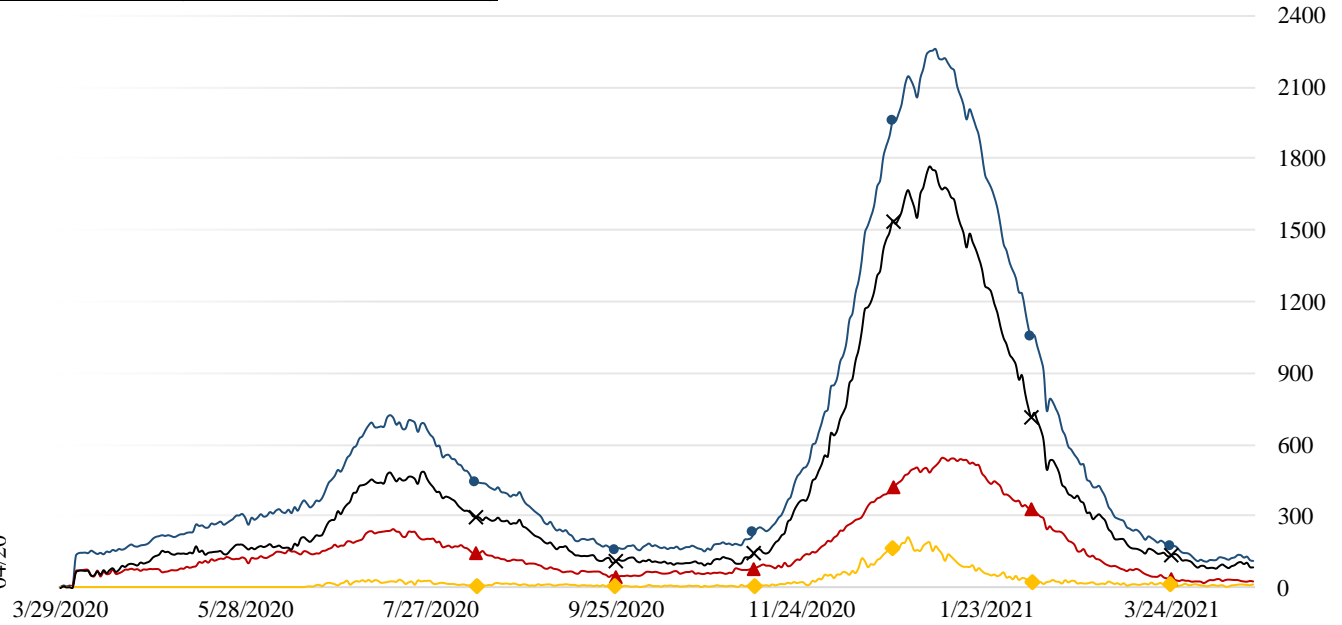
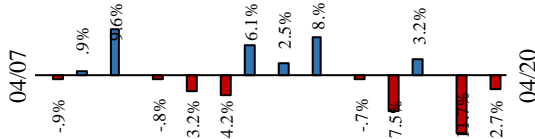
04/21/21

COVID 19 ORANGE COUNTY HOSPITAL SYSTEM DATA (CA SNOWFLAKE SERVER)

COVID+ CENSUS by BED TYPE | 04/20/2021

▲ ICU	23	-2	-8.0%	▼
◆ ED OVERFLOW	11	+3	37.5%	▲
X NON-ICU	87	-1	-1.1%	▼
● SYSTEM	110	-3	-2.7%	▼
3 Day 04-17-21	124	-14	-11.3%	
7 Day 04-13-21	122	-12	-9.8%	

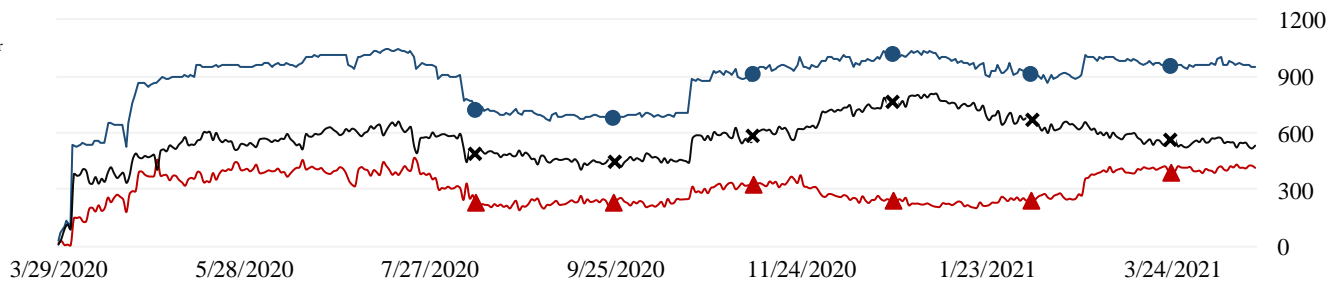
14 Day System COVID+ Change



ICU SYSTEM CENSUS | (04/20/21)

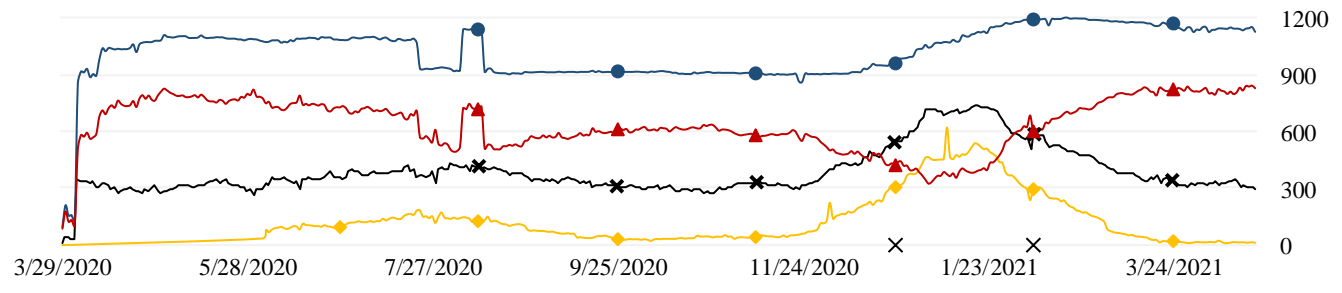
*includes adult, PICU, NICU & other

● SYSTEM - 950	<div style="width: 100%; height: 10px; background-color: #0056b3;"></div>
▲ AVAILABLE - 414 (43.6%)	<div style="width: 43.6%; height: 10px; background-color: #c00000;"></div>
X OCCUPIED - 536 (56.4%)	<div style="width: 56.4%; height: 10px; background-color: #000000;"></div>



VENTILATORS | (04/20/21)

● SYSTEM - 1127	<div style="width: 100%; height: 10px; background-color: #0056b3;"></div>
▲ AVAILABLE - 832 (73.8%)	<div style="width: 73.8%; height: 10px; background-color: #c00000;"></div>
X OCCUPIED - 295 (26.2%)	<div style="width: 26.2%; height: 10px; background-color: #000000;"></div>
◆ COVID - 12 (4.1%) *0 FROM ED	<div style="width: 4.1%; height: 10px; background-color: #c00000;"></div>



04/21/21

COVID 19 ORANGE COUNTY HOSPITAL SYSTEM DATA (CA SNOWFLAKE SERVER)

7 DAY HISTORY BED OCCUPANCY | 04/20/2021

● **SYSTEM BEDS (INCLUDES SURGE)- 6833**

◆ **INPATIENT INCLUDING SURGE- 3547 (51.9%)**

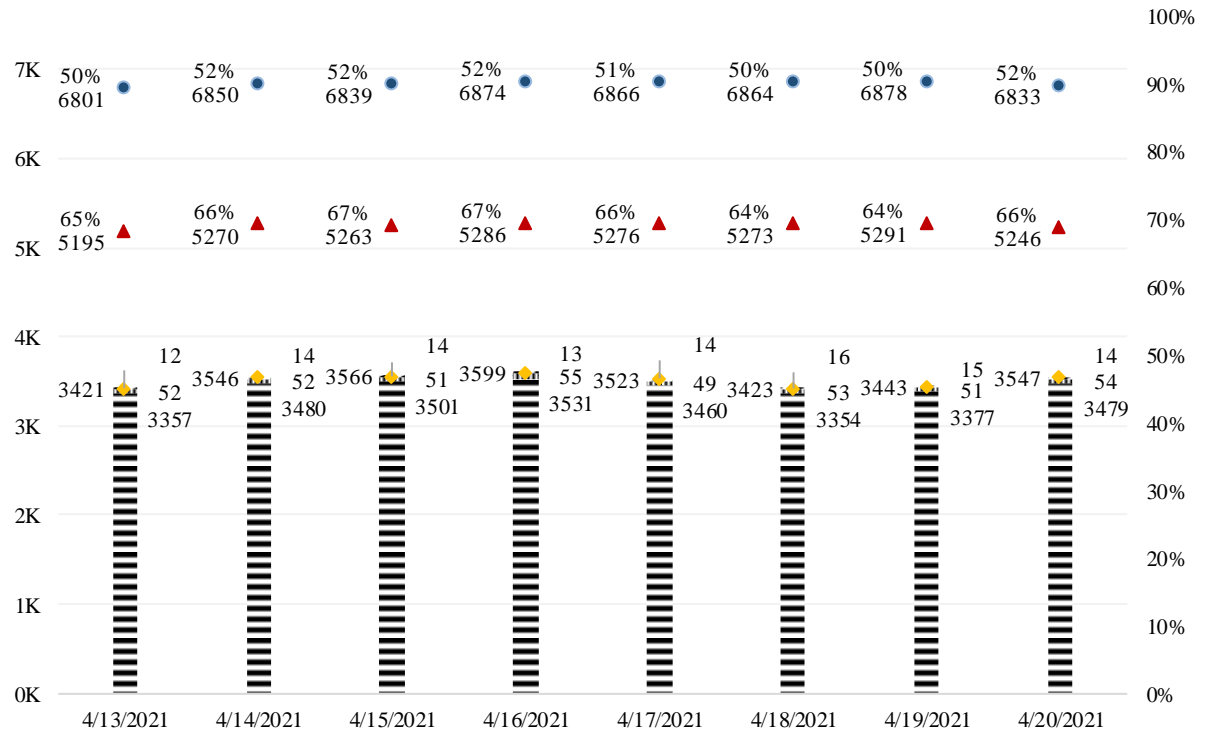


|||| **SURGE NON ICU INPATIENT- 54**

||||| **SURGE ICU INPATIENT- 14**

▲ **NON SURGE INPATIENT BEDS- 5246**

||||| **NON SURGE INPATIENT- 3479 (66.3%)**



SURGE CENSUS | 04/20/2021

● **SURGE BED SYSTEM- 1042 (ICU- 133 | NON ICU- 909)**

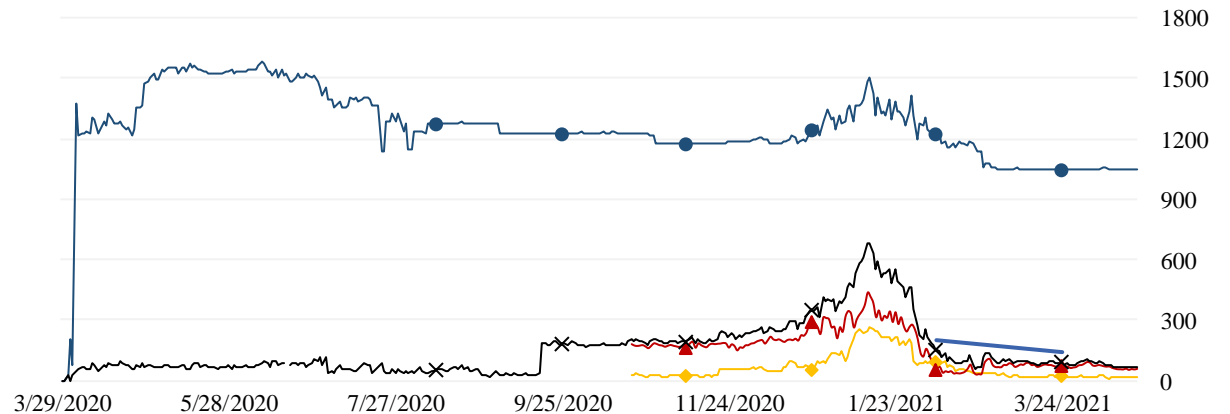
✕ **SURGE BED PATIENTS SYSTEM- 68 (6.5%)**



▲ **SURGE BED NON ICU PATIENTS- 54 (5.9%)**



◆ **SURGE BED ICU PATIENTS- 14 (10.5%)**



04/21/21

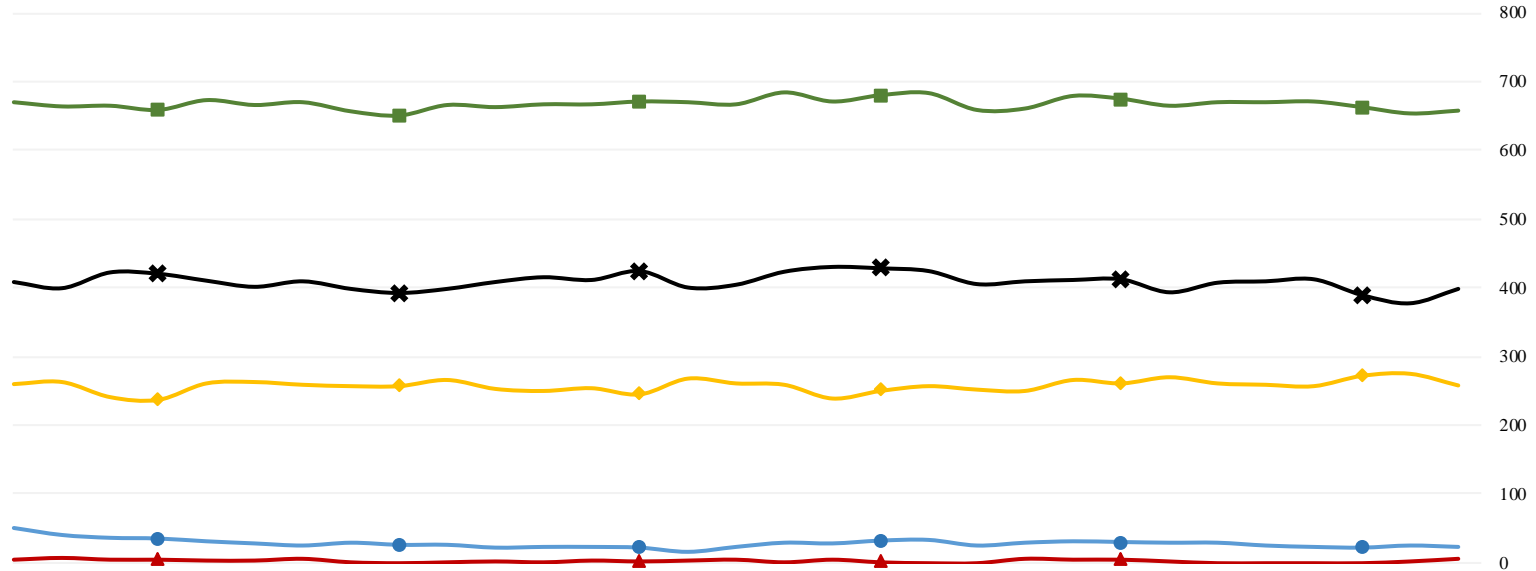
COVID 19 ORANGE COUNTY HOSPITAL SYSTEM DATA (CA SNOWFLAKE SERVER)

NON SURGE ICU BEDS: ADULT & PEDS COMBINED (03/22/21 - 04/20/21) | 33 ACUTE CARE FACILITIES REPORTING

ICU INSIGHTS

03-22-21 thru 04-20-21:

- Confirmed COVID+ in ICU decreased by -42.5%
- ▲ Confirmed suspect in ICU decreased by -16.7%
- ✕ Occupied ICU decreased by -0.3%
- ◆ Available ICU decreased by -1.9%
- System ICU decreased by -0.9%



	3-22-21	3-23-21	3-24-21	3-25-21	3-26-21	3-27-21	3-28-21	3-29-21	3-30-21	3-31-21	4-1-21	4-2-21	4-3-21	4-4-21	4-5-21	4-6-21	4-7-21	4-8-21	4-9-21	4-10-21	4-11-21	4-12-21	4-13-21	4-14-21	4-15-21	4-16-21	4-17-21	4-18-21	4-19-21	4-20-21
● CONFIRMED	40	36	35	31	28	25	29	26	26	22	23	23	22	16	23	29	28	32	33	25	29	31	30	29	29	25	23	22	25	23
<i>Adult</i>	40	36	35	31	28	25	29	25	26	22	22	23	22	16	23	29	28	32	33	25	29	31	30	29	29	25	23	21	25	23
<i>Peds</i>	0	0	0	0	0	0	0	1	0	0	1	0	0	0	0	0	0	0	0	0	0	0	0	0	0	0	0	1	0	0
▲ SUSPECTED	6	4	4	3	3	5	1	0	1	2	1	3	2	3	4	1	4	1	0	0	5	4	4	2	0	0	0	0	2	5
<i>Adult</i>	6	4	4	3	3	5	1	0	1	2	1	3	2	3	4	1	4	1	0	0	5	4	4	2	0	0	0	0	2	5
<i>Peds</i>	0	0	0	0	0	0	0	0	0	0	0	0	0	0	0	0	0	0	0	0	0	0	0	0	0	0	0	0	0	0
✕ OCCUPIED	400	423	421	411	402	410	399	393	399	409	416	412	425	401	405	424	431	429	425	406	410	412	413	394	408	410	413	390	378	399
<i>Adult</i>	378	395	397	386	381	389	376	372	376	380	396	393	399	377	380	400	406	407	398	384	390	393	390	375	387	389	391	367	352	373
<i>Peds</i>	22	28	24	25	21	21	23	21	23	29	20	19	26	24	25	24	25	22	27	22	20	19	23	19	21	21	22	23	26	26
◆ SYSTEM AVL	264	242	238	262	264	260	258	258	267	254	251	255	246	269	262	260	240	251	258	253	251	267	262	271	262	260	258	273	276	259
<i>Adult</i>	219	203	195	220	218	214	214	212	223	216	204	207	205	226	220	217	198	204	216	208	204	219	218	223	216	214	213	229	235	218
<i>Peds</i>	45	39	43	42	46	46	44	46	44	38	47	48	41	43	42	43	42	47	42	45	47	48	44	48	46	46	45	44	41	41
■ SYSTEM TTL	664	665	659	673	666	670	657	651	666	663	667	667	671	670	667	684	671	680	683	659	661	679	675	665	670	670	671	663	654	658
<i>Adult</i>	597	598	592	606	599	603	590	584	599	596	600	600	604	603	600	617	604	611	614	592	594	612	608	598	603	603	604	596	587	591
<i>Peds</i>	67	67	67	67	67	67	67	67	67	67	67	67	67	67	67	67	67	69	69	67	67	67	67	67	67	67	67	67	67	67

04/21/21

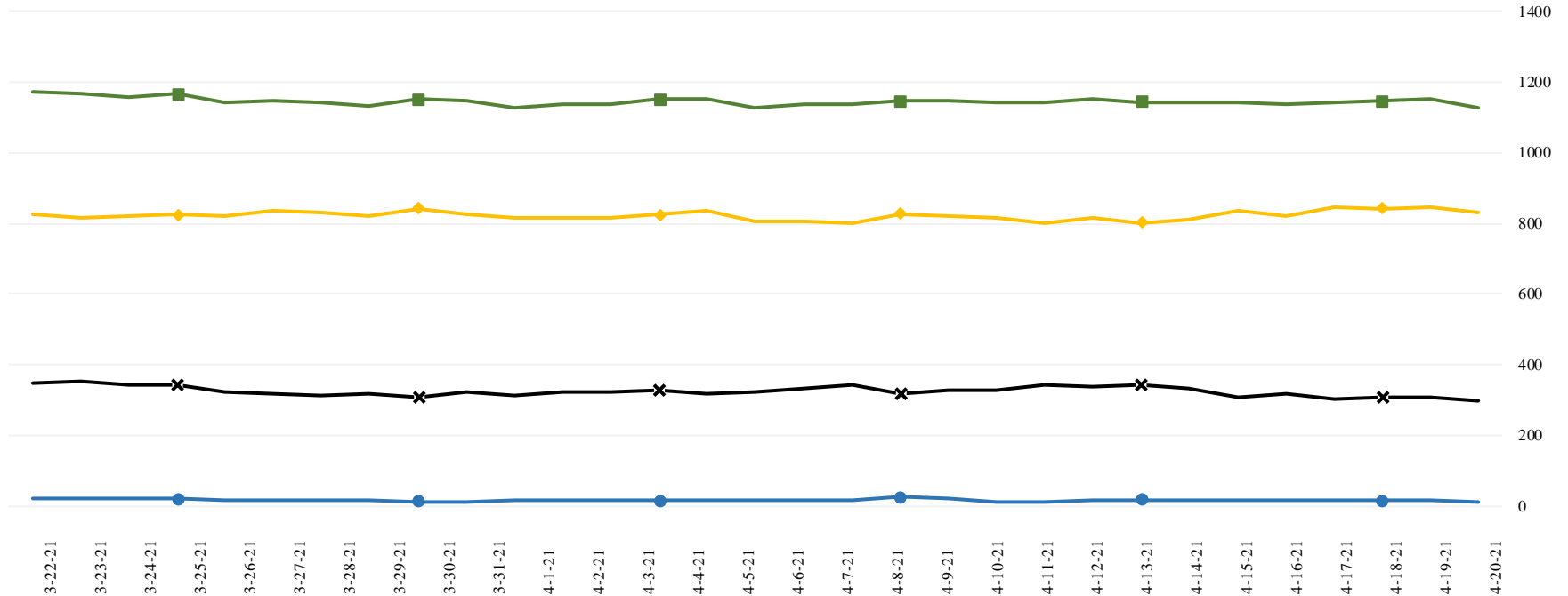
COVID 19 ORANGE COUNTY HOSPITAL SYSTEM DATA (CA SNOWFLAKE SERVER)

VENTILATORS (03/22/21 - 04/20/21) | 33 ACUTE CARE FACILITIES REPORTING

VENTILATOR INSIGHTS

03-22-21 thru 04-20-21:

- Confirmed COVID+ patients on ventilators decreased by -40.0%
- X Occupied ventilators decreased by -16.4%
- ◆ System available ventilators increased by 1.8%
- Total system ventilators decreased by -3.7%



	3-22-21	3-23-21	3-24-21	3-25-21	3-26-21	3-27-21	3-28-21	3-29-21	3-30-21	3-31-21	4-1-21	4-2-21	4-3-21	4-4-21	4-5-21	4-6-21	4-7-21	4-8-21	4-9-21	4-10-21	4-11-21	4-12-21	4-13-21	4-14-21	4-15-21	4-16-21	4-17-21	4-18-21	4-19-21	4-20-21
● CONFIRMED*	20	19	18	16	17	16	14	11	11	14	16	15	15	14	16	16	15	23	18	10	11	13	16	15	14	15	13	13	15	12
X OCCUPIED	353	340	343	322	316	313	315	309	324	311	323	323	327	319	321	330	340	318	326	329	341	336	343	334	307	315	300	305	306	295
◆ SYSTEM AVL	817	819	824	819	833	828	819	841	825	815	816	814	825	833	805	807	798	827	819	815	802	814	801	810	835	820	844	841	846	832
■ SYSTEM TTL	1170	1159	1167	1141	1149	1141	1134	1150	1149	1126	1139	1137	1152	1152	1126	1137	1138	1145	1145	1144	1143	1150	1144	1144	1142	1135	1144	1146	1152	1127

*Confirmed includes ED values

*Data Source: California Department of Public Health (CDPH) – Snowflake server

**Current Snowflake Data Dictionary may be found at:

https://www.calhospital.org/sites/main/files/file-attachments/data_dictionary_cha_covid_tracker_4-17-20.pdf

Acute Care Hospital PPE / Ventilator Supplies Days on Hand – (31/33 ACHs reported)

Reporting Date: 04/20/21*	30 days +	15-30 days	7-14 days	4-6 days	0-3 days	Not Reported
Ventilator Supplies**	8	6	14	2	1	2
N95 Masks**	27	4	0	0	0	2
Surgical Masks**	25	4	2	0	0	2
Face Shields**	25	2	3	1	0	2
Gloves**	17	9	5	0	0	2
Gowns**	23	6	2	0	0	2

Hospital Criteria for shifting to Crisis Care Strategies

LEGEND

STATUS

CRITERIA	STATUS		
	Normal Operations	Modified Operations	Modified Operations Assistance Needed
Rate of change in Hospitalized COVID-19 patients (doubling time over last 7 days)	Never to 4 weeks to double	4 weeks to 2 weeks to double	Less than 2 weeks to double
Absolute COVID-19 Census in the hospitals across Orange County	Less than 750	750-1500	>1500
Hospital census as a percentage of staffed capacity	<80%	80% to 90%	>90%
Hospital ICU census as a percentage of staffed ICU capacity	<70%	70% to 85%	>85%

Hospital Criteria for shifting to Crisis Care Strategies

04/20/21

STATUS

CRITERIA	STATUS		
	Normal Operations	Modified Operations Under Control	Modified Operations Assistance Needed
Rate of change in Hospitalized COVID-19 patients (doubling time over last 7 days)	Declining		
Absolute COVID-19 Census in the hospitals across Orange County	110		
Hospital census as a percentage of staffed capacity	66%		
Hospital ICU census as a percentage of staffed ICU capacity	61%		

AGENCY OPERATIONS CENTER / LOGISTICS SECTION

- The AOC is activated on **Wednesdays from 0900-1600 at Level II**; Warehouse Ops are M-F - 0900-1600.
- SCARCE Resources: Gloves, Syringes, Needles

Total Activity – Updated 4/14/21 at 1530

INQUIRIES	RR RECEIVED	RR FILLED
19,091 +144	11,497 +61	9,403 +57
Total Denied Requests: 895 / Total Redacted Requests: 964		

Inventory Report 02/18/20 to 04/20/21

Logistics Daily Units Distributed 4/14/21

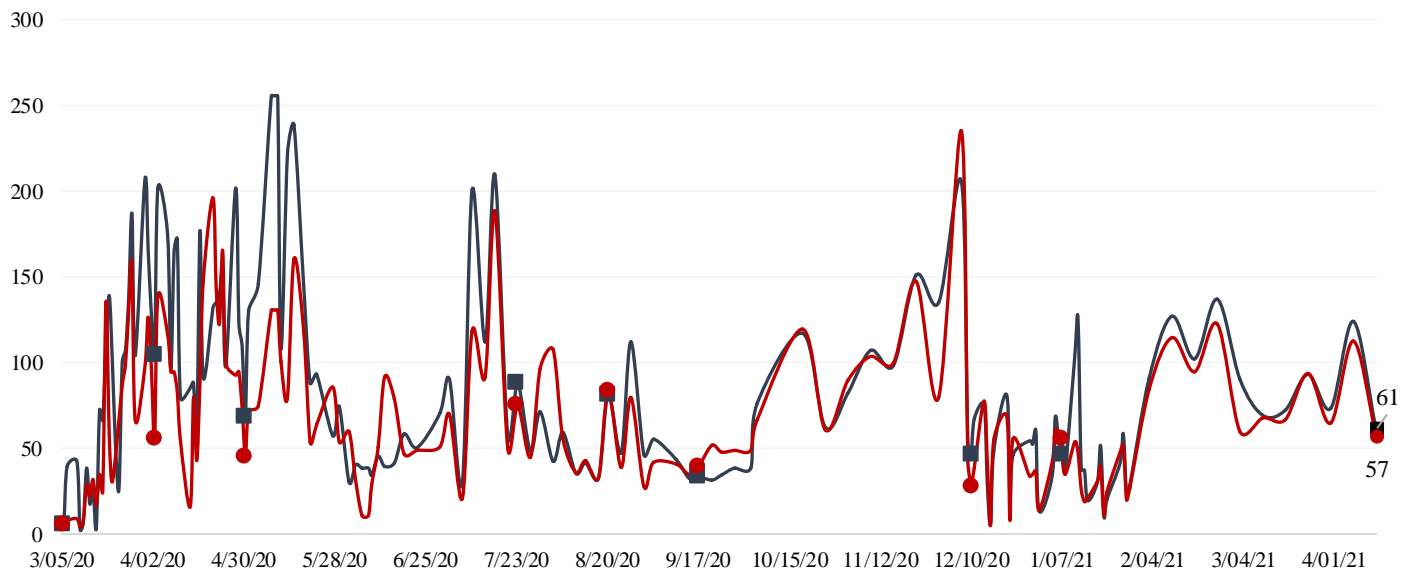
N95 Mask	500
Surgical Mask	2600
Gown	0
Gloves	86,800
Face Shields/Eye Protection	500
Hand Sanitizer	100
Other	656
Total Units	91,156

Medical Supply/Equipment Total Units Distributed

N95 Mask	5,268,655
Surgical Mask	2,199,555
Gowns	2,979,766
PPE-Suit	17,965
Gloves	8,814,670
Eye Protection	425,908
Hand Sanitizer	319,727
Other Items	3,697,019
Total Units	23,723,265

Resource Requests - Updated 4/14/21 at 1530

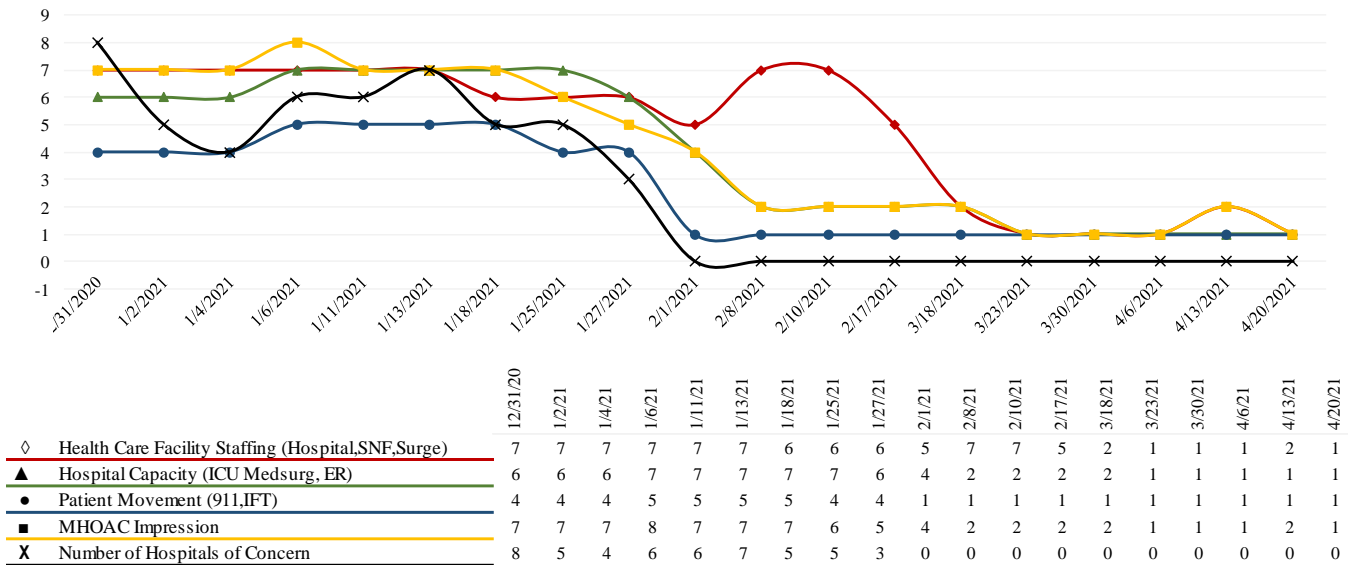
Received ■ Filled ●



MHOAC IMPRESSION REPORT TO CDPH

- The MHOAC provides a weekly “temperature check” report to CDPH which is an impression of the current status of the local medical/health system in several key areas.
- The results of these reports have been tracked and trended over time and are included below.

Region 1 - Orange
OA Report: 12/31/20 through 04/20/21



ALTERNATE CARE SITE (ACS)

- Fairview Alternate Care Site (FACS) opened for admissions on **TUESDAY, 12/15/20 @ 1800**
- **FACS was placed into a “warm close” status on MONDAY, 03/15/2021.** A “warm close” will allow the State of California to maintain the ACS in a semi-ready state and will enable the site to reopen within 72 hours if needed.

Fairview (COVID-19 +)		
Patient Census (as of 3/13/2021 09:00)	CURRENT	TOTAL
Orange County	0	140
LA County	0	71
Riverside	0	6
San Bernardino County	0	4
Ventura County	0	1
Total patients CENSUS / TOTAL ACCEPTED	0	222
Patients Discharged		TOTAL
DISCHARGED		222
Memory Care Unit (MCU) Census (as of 3/2/2021 17:00)		
MCU Patient Census	5	50
Patients Discharged from MCU		TOTAL
MCU - DISCHARGED		45

MOBILE FIELD HOSPITALS (MFHs)

- MFHs are capable of expanding current hospital capacity by adding additional patient beds.
- They are large heavy duty canvas tents with hard flooring and temperature controlled units.
- They can be configured in a myriad of footprints and sizes (i.e. 25-200 patient bed).
- OCEMS has a total of 8 trailers to support at minimum, 200 patient beds.
- CDPH is primed and ready to provide hospitals a waiver to allow emergency use of these MFHs.
 - Hospitals who have self-identified in receiving a MFH include:

- **UCI (50 patient bed) – currently used for patient care activities**
- **Fountain Valley (25 patient bed) – converted to community vaccination clinic facility**
- **Los Alamitos (25 patient bed) – demobilized**
- **Saint Jude (50 patient bed) – demobilized**

