

OVERVIEW OF CURRENT SITUATION (5/12/21 0921)

Source: Johns Hopkins University & Medicine <https://coronavirus.jhu.edu/map.html>

Cases / Deaths
 Worldwide: 159,823,571 / 3,320,704
 Nationwide: 32,783,902 / 582,923
 California: 3,761,779 / 62,365
 Orange Co: 254,457 / 5,023 Source: [Orange County COVID-19 Case Counts & Testing Figures](#)

ORANGE COUNTY PUBLIC HEALTH (as of 5/12/21 1112)

Orange County COVID-19 Summary* [click for full details](#)

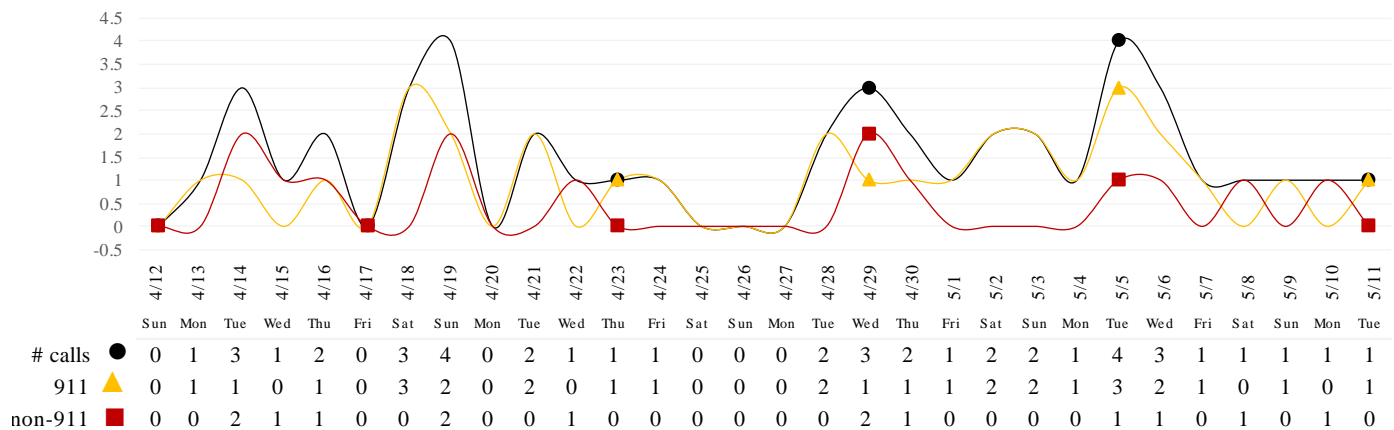
	Thu 5/6/21	Fri 5/7/21	Sat 5/8/21	Sun 5/9/21	Mon 5/10/21	Tues 5/11/21	Wed 5/12/21
Cases Reported to Date	254,201	254,231	254,278	254,311	254,357	254,415	254,457
Deaths Reported to Date	4,992	5,000	5,005	5,008	5,008	5,017	5,023
Tests Reported Today	12,653	11,186	11,100	6,835	4,087	7,437	9,980
Cumulative Tests to Date	3,710,981	3,722,167	3,733,267	3,740,102	3,744,189	3,751,626	3,761,606

*Data posted is always preliminary & subject to change. More information may become available as individual case investigations are completed. **LOCAL DATA MAY BE DIFFERENT FROM THE STATE WEBSITE DATA.**

SKILLED NURSING/ASSISTED LIVING/RESIDENTIAL CARE FACILITY – TRENDS

*Data Source: Orange County Medical Emergency Data System (OC-MEDS) – Updated 5/11/21

Calls to SNFs/Congregate Living with Primary Impressions: Fever/Cough, Influenza-like Illnesses
 (Transports to ERCs Only - Last 30 Days)



3/17: Row headers for 911 and non-911 were switched to accurately reflect the item being reported. Total number of calls did not change.

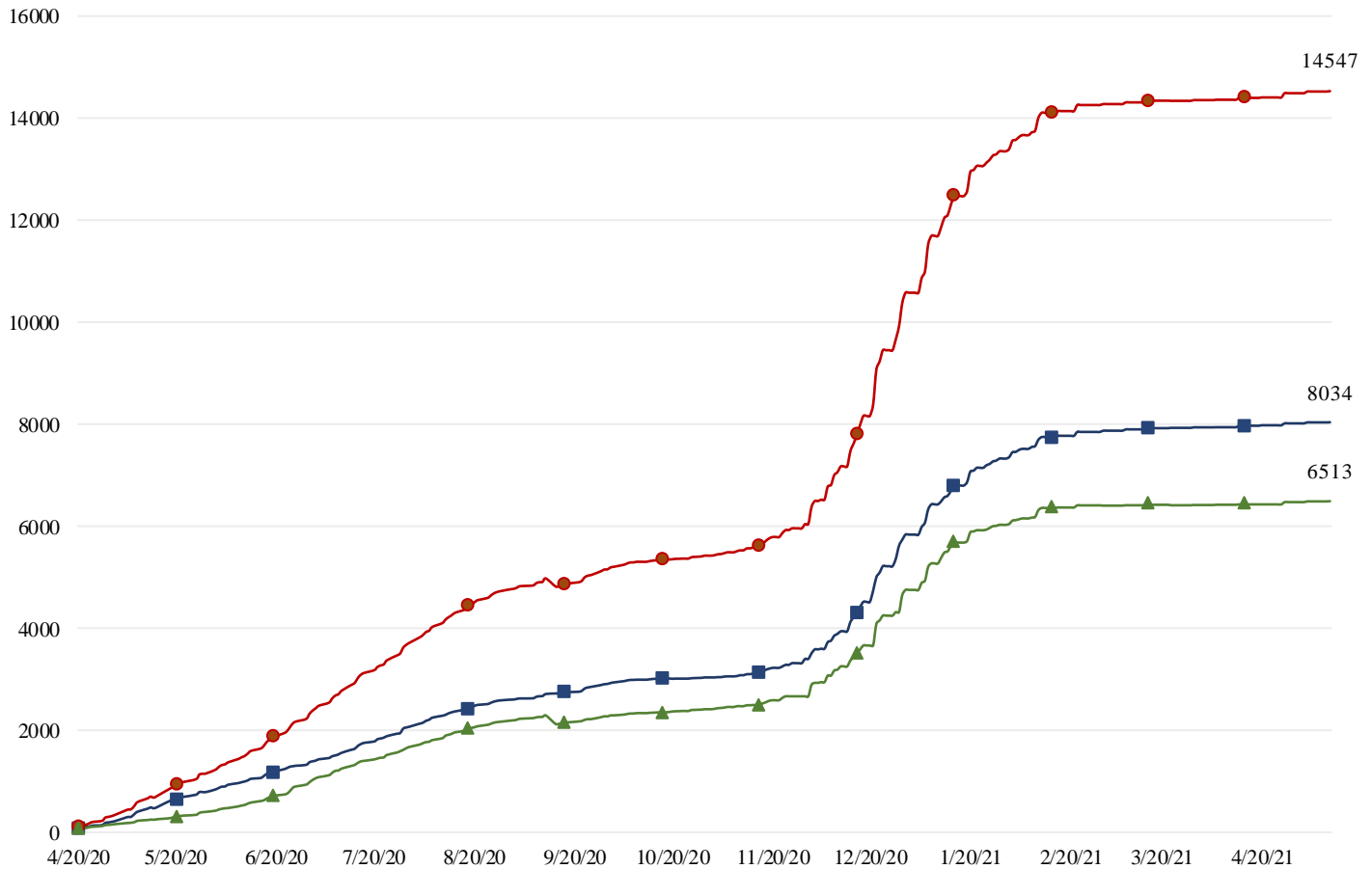
*Data Source: California Department of Public Health (CDPH)

Skilled Nursing/Assisted Living/Residential Care Facility PPE / Ventilator Supplies Days on Hand (68/73 SNFs reported)

Reporting Date: 5/11/2021	0 - 3 days	4 - 7 days	8-14 days	15+ days
N95 Masks	0	1	12	55
Surgical Masks	0	1	10	57
Eye Protection	0	1	12	55
Gowns	0	1	9	58
Gloves	0	2	10	56
Alcohol-Based Hand Sanitizer	0	2	11	55

*Data Source: Orange County Health Care Agency – Public Health – 5/11/21

COVID+ in Congregate Healthcare*



NOTE: Decrease in the COVID + in staff seen on graph is due to data being cleaned and removing duplicates of those that work in multiple OC facilities or are contract staff and care for residents at multiple facilities.

Resident COVID+ ■ Staff COVID+ ▲ Total ●

*Data Source: Orange County Health Care Agency – Public Health

Current Facility Outbreaks (as of 5/11/21 1000)

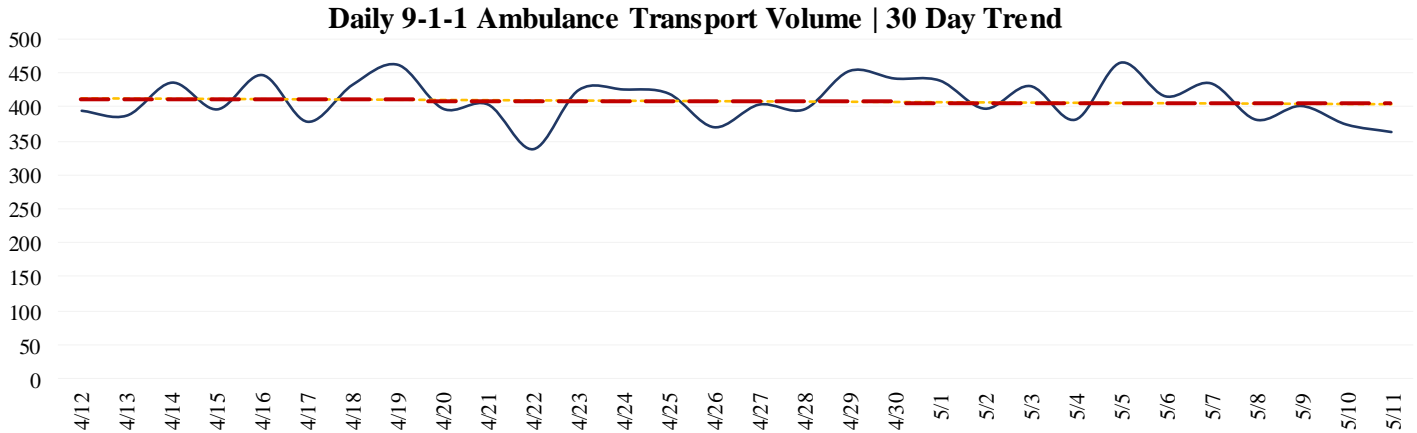
An "Outbreak" is two (2) or more confirmed cases of COVID-19 in facility occurring within 14 days.

Facility Type by Licensing Category, Count		Facility Name Alphabetical
Skilled Nursing Facility	0	
Elderly Assisted Living	0	

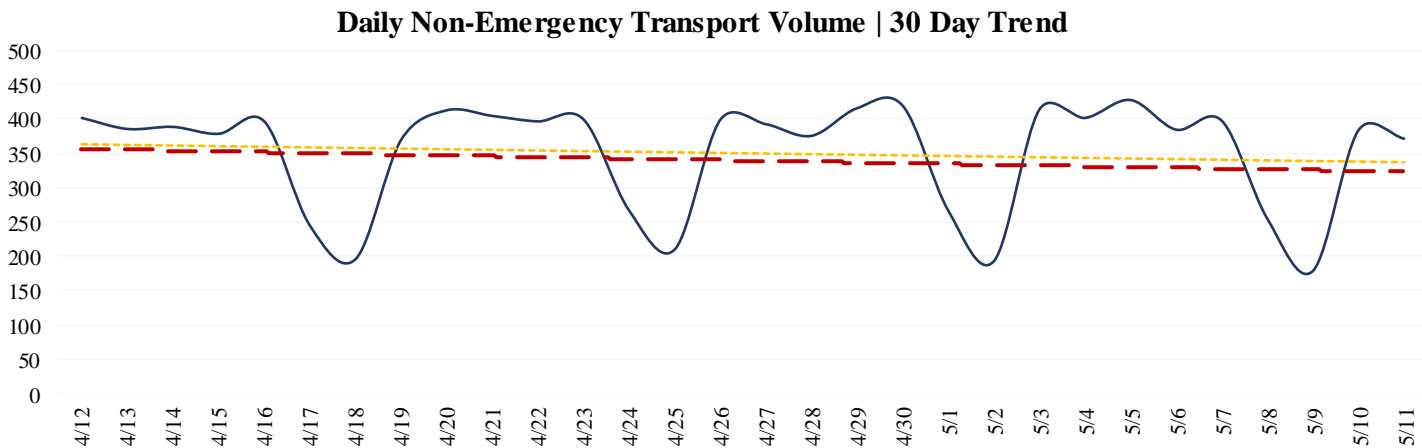
EMERGENCY MEDICAL SERVICES STATUS

*Data Source: Orange County Medical Emergency Data System (OC-MEDS)

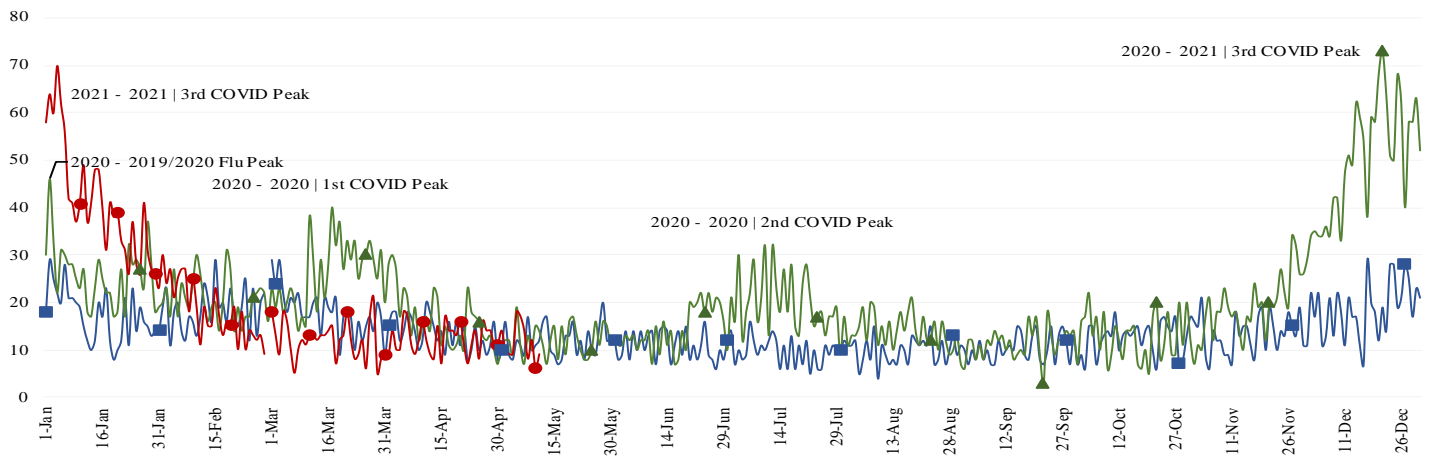
9-1-1 ambulance transport volume **has moved slightly downward over the last week**. Volume continues to average about **5-10% below normal** (pre-COVID) levels (Updated 05/12/21).



Non-emergency ambulance transports **have remained steady** over the last few weeks. Transport volume **continues to average about 30%** below normal (pre-COVID) levels overall (Updated 05/12/21).



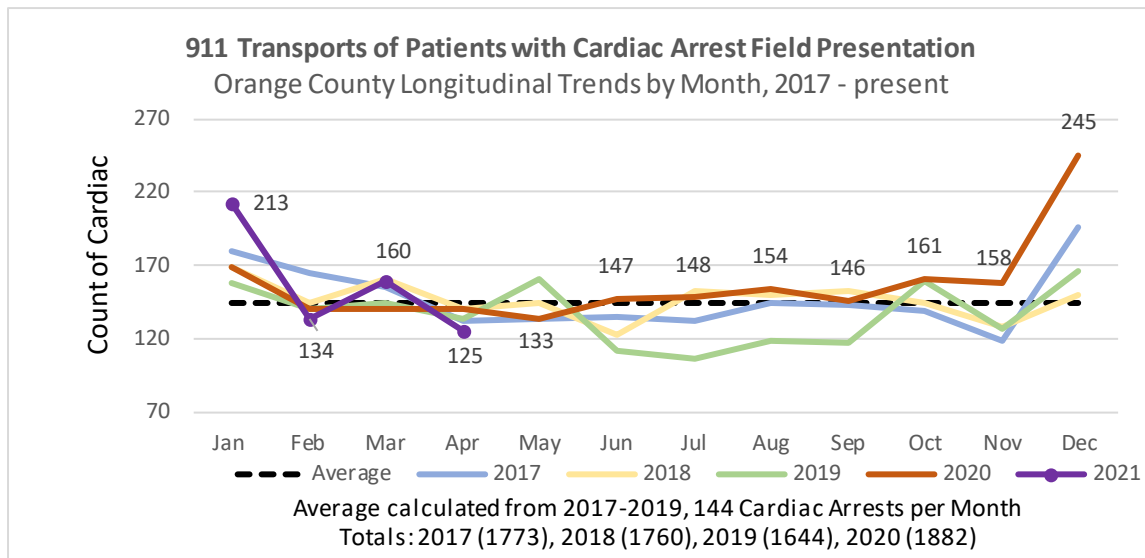
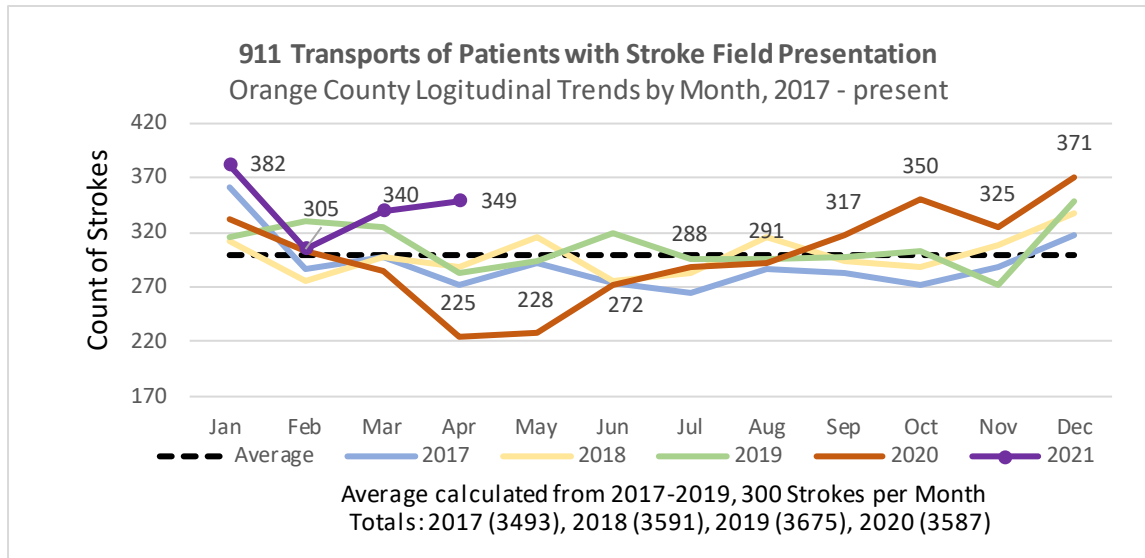
Primary Impressions of Cold/Flu/ILI by 9-1-1 EMS **have declined somewhat over the last week, but continue to be near normal baseline levels** for this time of year. (Updated 05/12/21).

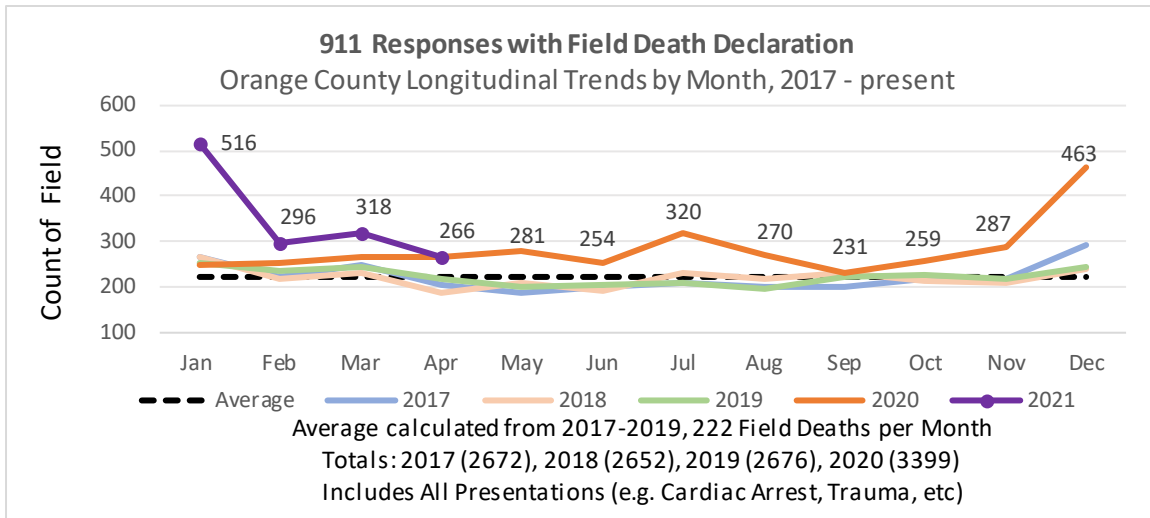


EMS Provider Impressions - Cold/Flu/ILI/COVID-19 Year Over Year Comparison (2019 ■, 2020 ▲, & 2021 ●)

911 EMS SYSTEM MONITORING

*Data Source: Orange County Medical Emergency Data System (OC-MEDS)





Summary Data Table for Chart, “911 Responses with Field Death Declaration”

	2017	2018	2019	2020	2021
January	268	267	254	250	516
February	224	216	235	254	296
March	248	233	245	265	318
April	206	186	220	265	266
May	186	210	202	281	
June	201	190	205	254	
July	211	233	208	320	
August	201	218	195	270	
September	199	233	222	231	
October	217	213	227	259	
November	217	211	217	287	
December	294	242	246	463	
Total	2378	2410	2430	3399	

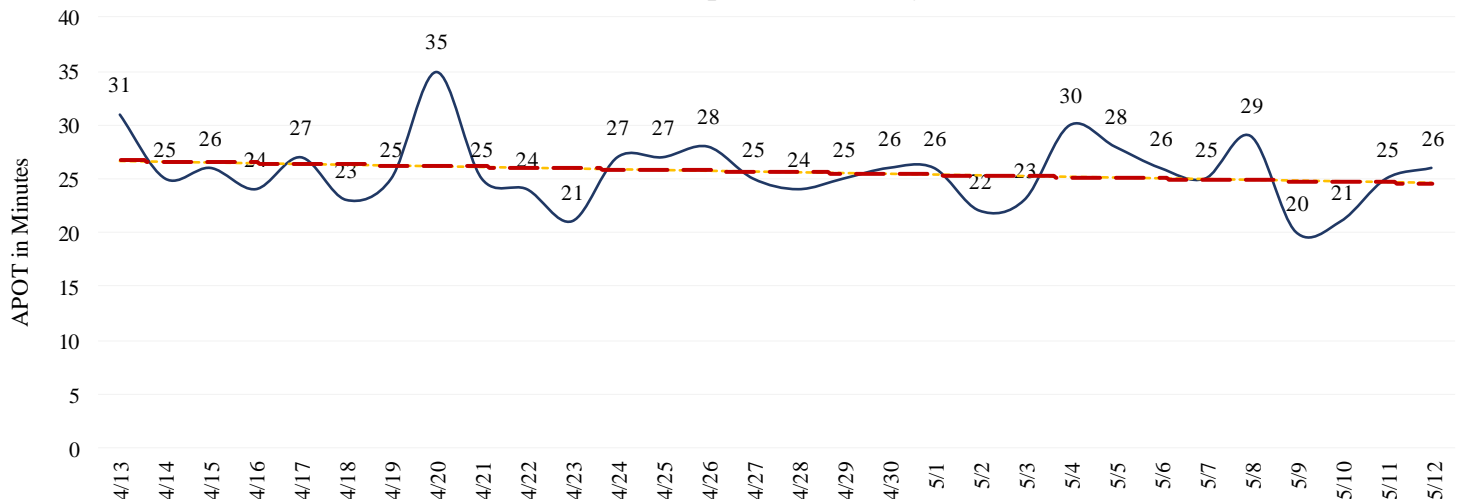
- Ambulance Patient Offload Time (APOT) is defined as the time the ambulance arrives at the receiving destination (wheels stop) to the time that the ambulance crew physically transfers the patient to the ED gurney. Last 24 hours: **Current Average APOT is: 13m42s / Current 90th Percentile APOT is: 25m52s**

- Nine (9) ERCs had APOT times greater than thirty (30) minutes.
- Four (4) ERCs had APOT times greater than sixty (60) minutes.

The chart below displays a daily trend over the last 30 days.

*Data Source: Orange County Medical Emergency Data System (OC-MEDS) – Updated 5/12/21

COVID 19 - APOT 90th percentile | Daily Trend

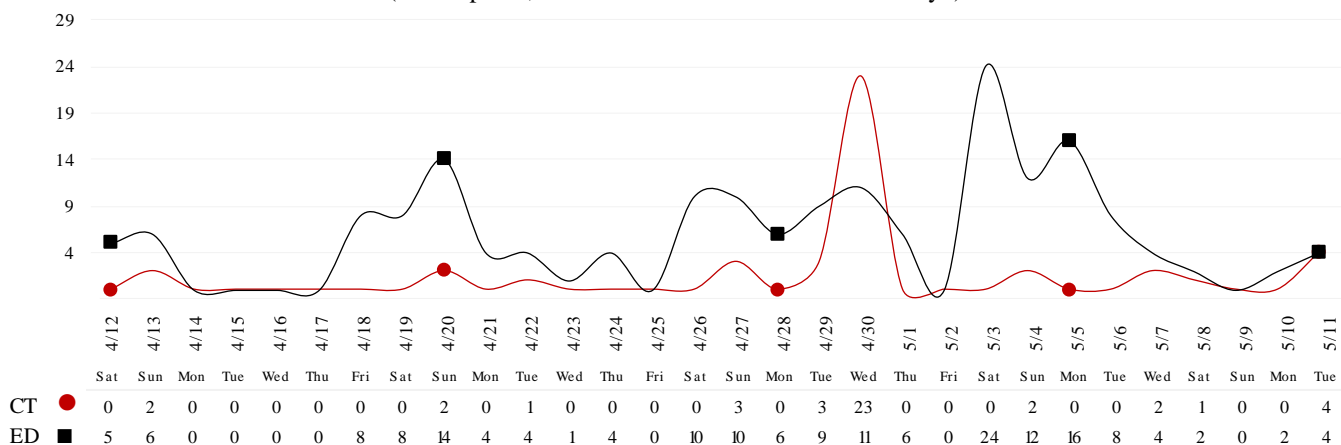


Note: a handful of ERCs were close to the 30 minute threshold, but were not over it.

- Emergency Department (ED) Diversion & Computerized Tomography (CT) (ED closed to all ambulance transport due to no ED capacity or no CT available) for the last 30 days.
- NOTE: Suspension of Hospital Diversion was reinstated, 1/4/21, @ 1900.**
- NOTE: Hospital Diversion was reinstated on 1/25/21 @ 1900.**

*Data Source: Orange County Medical Emergency Data System (OC-MEDS) – Updated 5/11/21

Hours of Diversion per 24-Hour Period (25 Hospitals, rounded to nearest hour - Last 30 Days)



05/12/21

26): Anaheim Regional, Anaheim Global, Chapman Global, CHOC, CHOC at Mission, Foothill, Fountain Valley, Garden Grove, Hoag-Irvine, Hoag-Newport Beach, Huntington Beach, Kaiser-Anaheim, Kaiser-Irvine, La Palma, Los Alamitos, Mission-Laguna Beach, Mission-Mission Viejo, Orange Coast Memorial, Orange County Global, Placentia Linda, Saddleback Memorial, Saint Jude, South Coast Global, St. Josephs, UCI, West Anaheim

*Data Source: California Department of Public Health (CDPH) – Snowflake server

Current Snowflake Data Dictionary may be found at:

https://www.calhospital.org/sites/main/files/file-attachments/data_dictionary_cha_covid_tracker_4-17-20.pdf

33 HOSPITALS

Date	Census All System	Occupancy % System	COVID+ Hospitalized System	COVID+ Hospitalized ICU Only (Adult & Peds)	% COVID+ hospitalized of ICU Occupied (Adult & Peds)	ICU Occupied (Adult & Peds)**	ICU Available (Adult & Peds)***	% ICU Available (Adult & Peds)****	ICU by Patient Age Group						% Ventilators Available
									Adult Occupied	Adult Available	Adult % Available	Pediatric Occupied	Pediatric Available	Pediatric % Available	
4/28	3616	68%	116	25	6%	408	248	38%	375	214	36%	33	34	51%	74%
4/29	3617	68%	113	22	6%	393	249	39%	370	205	36%	23	44	66%	75%
4/30	3588	68%	106	27	7%	387	259	40%	361	218	38%	26	41	61%	76%
5/1	3524	67%	111	24	6%	377	269	42%	353	226	39%	24	43	64%	76%
5/2	3388	65%	95	21	5%	385	260	40%	359	219	38%	26	41	61%	76%
5/3	3346	64%	97	26	7%	377	274	42%	360	224	38%	17	50	75%	76%
5/4	3462	66%	89	25	6%	390	260	40%	364	219	38%	26	41	61%	77%
5/5	3587	68%	91	23	6%	415	248	37%	393	203	34%	22	45	67%	76%
5/6	3531	67%	93	20	5%	396	252	39%	372	209	36%	24	43	64%	77%
5/7	3533	67%	90	22	6%	398	263	40%	377	217	37%	21	46	69%	77%
5/8	3522	66%	84	21	5%	401	252	39%	383	203	35%	18	49	73%	77%
5/9	3370	64%	80	20	5%	384	264	41%	366	215	37%	18	49	73%	75%
5/10	3024	58%	84	18	5%	370	278	43%	351	230	40%	19	48	72%	75%
5/11	3449	66%	83	18	4%	406	244	38%	386	197	34%	20	47	70%	75%

ICU occupied PREVIOUSLY ICU CDPH OC Occupied – CDPH combines occupied ICU adult beds and occupied ICU pediatric beds as a reporting metric on their COVID-19 Hospital dashboard. *ICU Available PREVIOUSLY ICU CDPH OC Available – CDPH subtracts the sum of occupied ICU adult beds and occupied ICU pediatric beds, from the sum of ICU total adult beds and ICU total pediatric beds to determine ICU available beds on their COVID-19 Hospital dashboard. ****% ICU AVAILABLE PREVIOUSLY % ICU CDPH OC Available – The sum of occupied ICU adult beds and occupied ICU pediatric beds, divided by the sum of ICU total adult beds and ICU total pediatric beds, as a percentage. *****COVID+ hospitalized of ICU Occupied PREVIOUSLY % ICU Beds System Available – All ICU beds reported as available in Orange County, which includes Adult, PICU, and NICU, and any other ICU bed types.

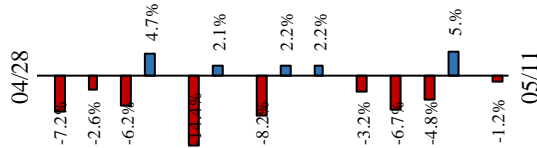
05/12/21

COVID-19 ORANGE COUNTY HOSPITAL SYSTEM DATA (CA SNOWFLAKE SERVER)

COVID+ CENSUS by BED TYPE | 05/11/2021

▲ ICU	18	0	0.0%
◆ ED OVERFLOW	9	-8	-47.1%
X NON-ICU	65	-1	-1.5%
● SYSTEM	83	-1	-1.2%
3 Day 05-08-21	84	-1	-1.2%
7 Day 05-04-21	89	-6	-6.7%

14 Day System COVID+ Change



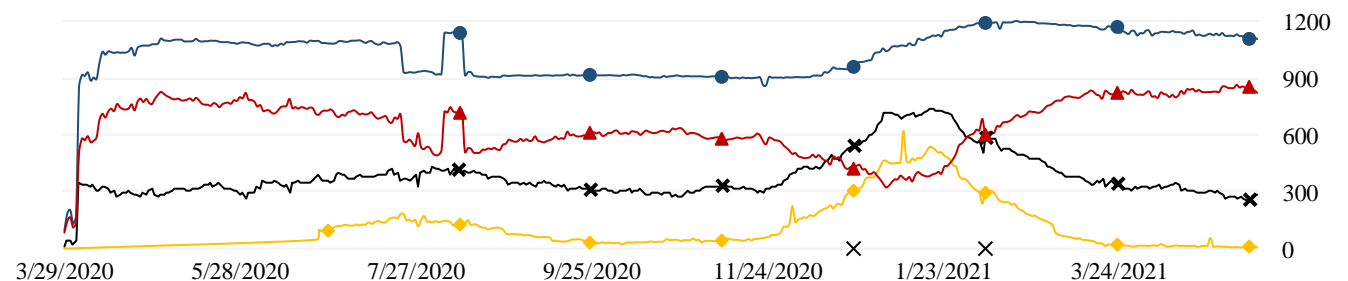
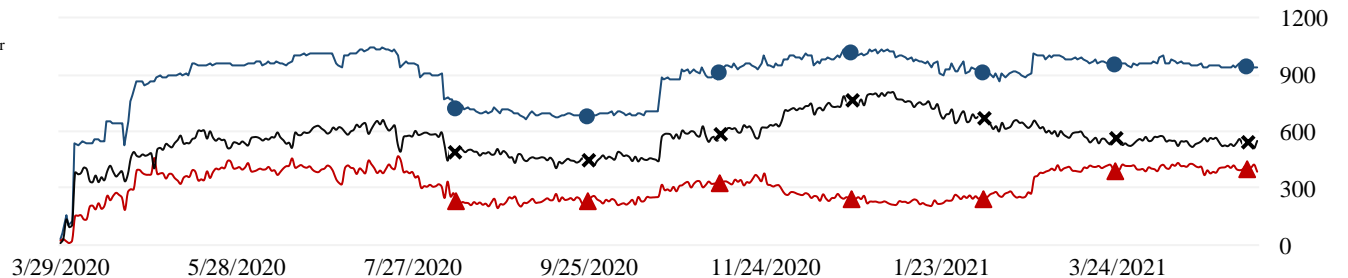
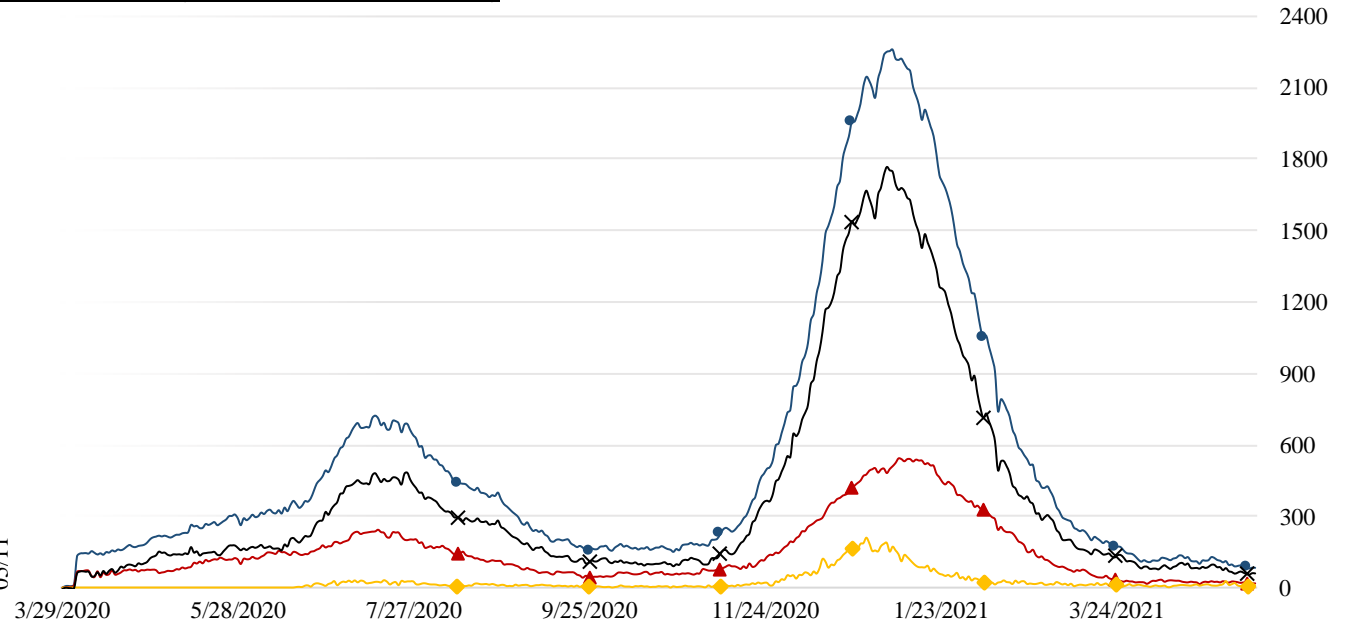
ICU SYSTEM CENSUS | (05/11/21)

*includes adult, PICU, NICU & other

● SYSTEM - 938
▲ AVAILABLE - 385 (41.0%)
X OCCUPIED - 553 (59.0%)

VENTILATORS | (05/11/21)

● SYSTEM - 1107
▲ AVAILABLE - 825 (74.5%)
X OCCUPIED - 282 (25.5%)
◆ COVID- 10 (3.5%) *0 FROM ED



05/12/21

COVID 19 ORANGE COUNTY HOSPITAL SYSTEM DATA (CA SNOWFLAKE SERVER)

7 DAY HISTORY BED OCCUPANCY | 05/11/2021

● SYSTEM BEDS (INCLUDES SURGE)- 6793

◆ INPATIENT INCLUDING SURGE- 3530 (52.0%)

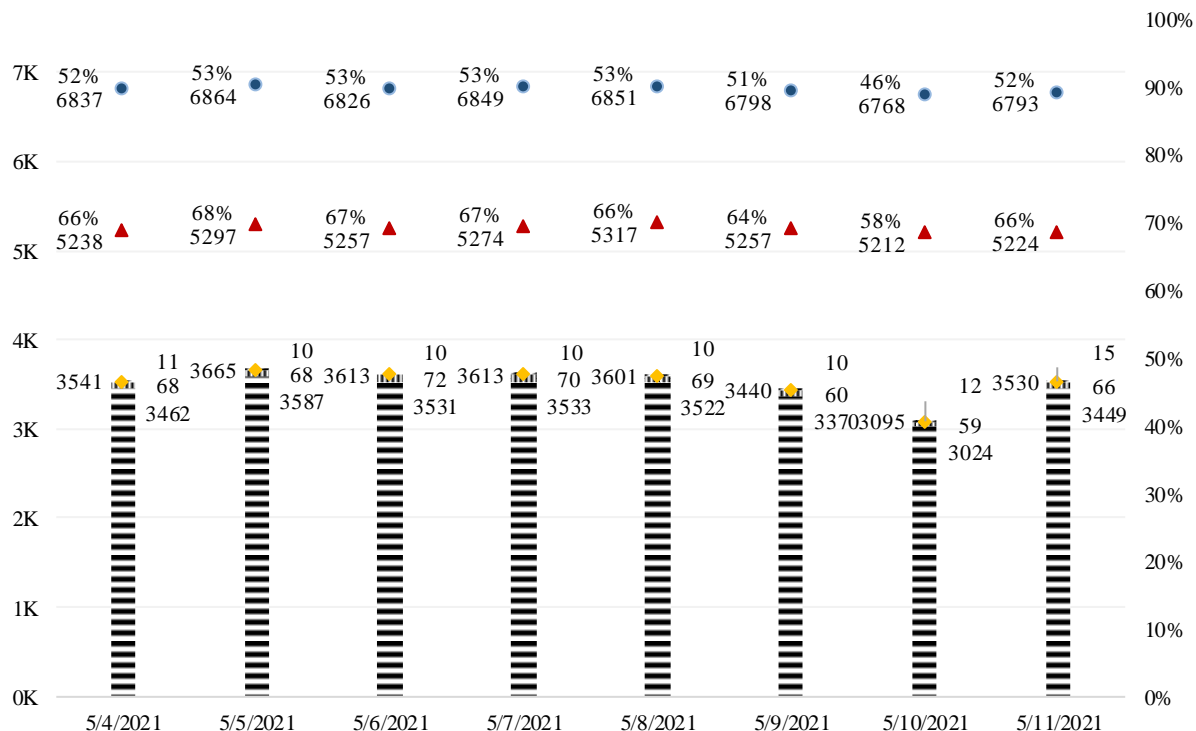
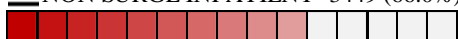


|||| SURGE NON ICU INPATIENT- 66

|||| SURGE ICU INPATIENT- 15

▲ NON SURGE INPATIENT BEDS- 5224

≡ NON SURGE INPATIENT- 3449 (66.0%)



SURGE CENSUS | 05/11/2021

● SURGE BED SYSTEM- 1014 (ICU- 125 | NON ICU- 889)

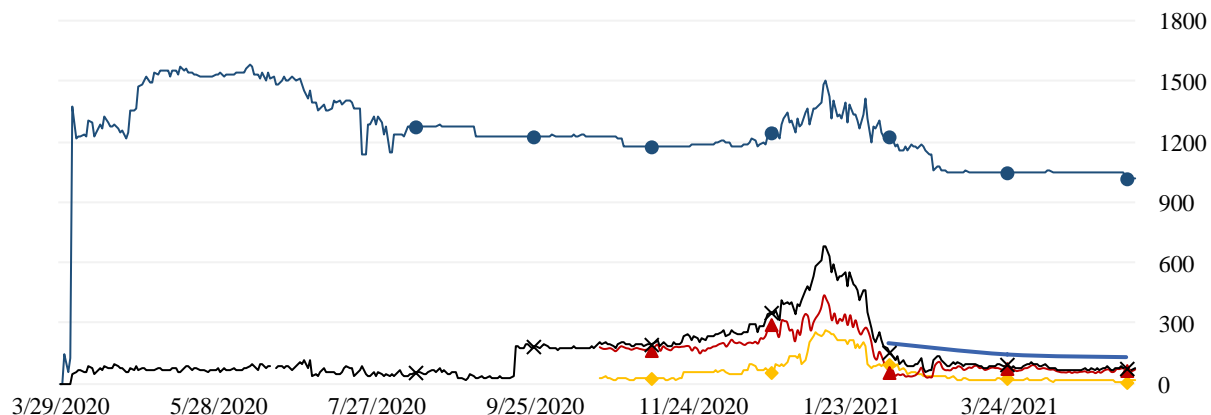
X SURGE BED PATIENTS SYSTEM- 81 (8.0%)



▲ SURGE BED NON ICU PATIENTS- 66 (7.4%)



◆ SURGE BED ICU PATIENTS- 15 (12.0%)



05/12/21

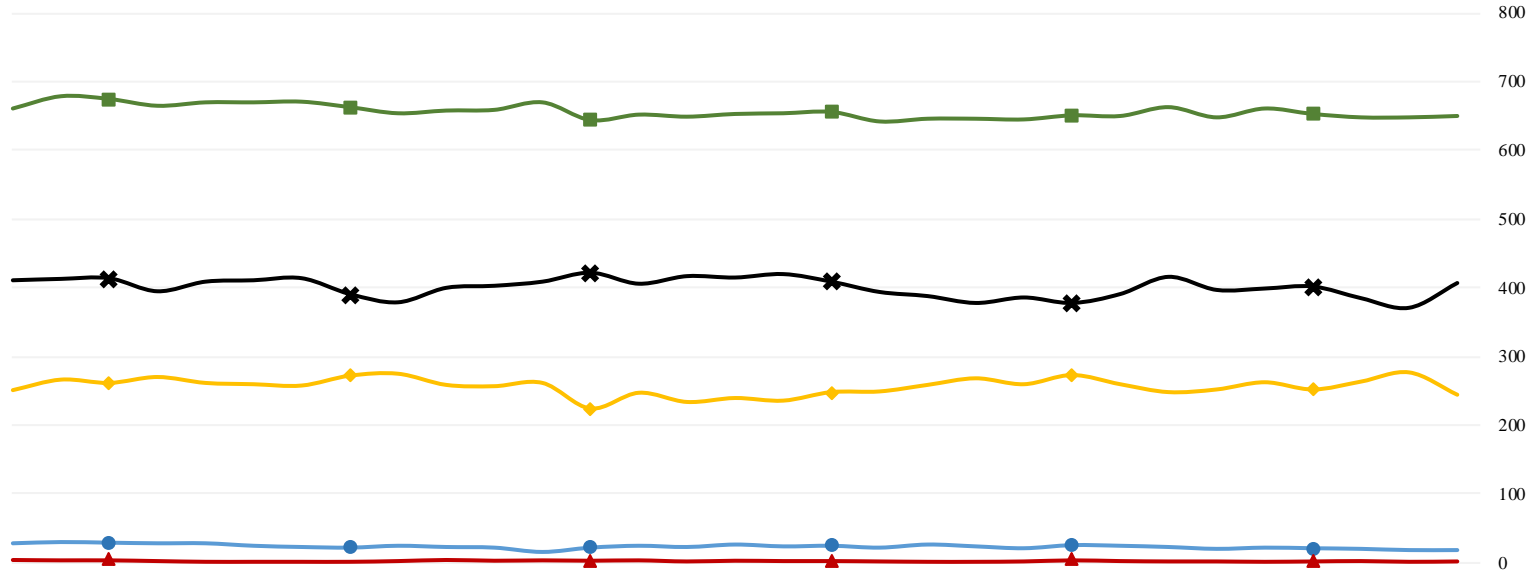
COVID 19 ORANGE COUNTY HOSPITAL SYSTEM DATA (CA SNOWFLAKE SERVER)

NON SURGE ICU BEDS: ADULT & PEDS COMBINED (04/12/21 - 05/11/21) | 33 ACUTE CARE FACILITIES REPORTING

ICU INSIGHTS

04-12-21 thru 05-11-21:

- Confirmed COVID+ in ICU decreased by -41.9%
- ▲ Confirmed suspect in ICU decreased by -75.0%
- X Occupied ICU decreased by -1.5%
- ◆ Available ICU decreased by -8.6%
- System ICU decreased by -4.3%



	4-12-21	4-13-21	4-14-21	4-15-21	4-16-21	4-17-21	4-18-21	4-19-21	4-20-21	4-21-21	4-22-21	4-23-21	4-24-21	4-25-21	4-26-21	4-27-21	4-28-21	4-29-21	4-30-21	5-1-21	5-2-21	5-3-21	5-4-21	5-5-21	5-6-21	5-7-21	5-8-21	5-9-21	5-10-21	5-11-21
● CONFIRMED	31	30	29	29	25	23	22	25	23	22	15	22	25	23	27	24	25	22	27	24	21	26	25	23	20	22	21	20	18	18
Adult	31	30	29	29	25	23	21	25	23	22	15	22	25	23	27	24	25	22	27	24	21	25	25	23	20	22	21	20	18	18
Peds	0	0	0	0	0	0	1	0	0	0	0	0	0	0	0	0	0	0	0	0	1	0	0	0	0	0	0	0	0	0
▲ SUSPECTED	4	4	2	0	0	0	0	2	5	3	4	3	4	1	3	2	2	1	0	0	1	4	2	1	1	0	1	2	0	1
Adult	4	4	2	0	0	0	0	2	5	3	4	3	4	1	3	2	2	1	0	0	1	4	2	1	1	0	0	1	0	1
Peds	0	0	0	0	0	0	0	0	0	0	0	0	0	0	0	0	0	0	0	0	0	0	0	0	0	1	1	0	0	0
X OCCUPIED	412	413	394	408	410	413	390	378	399	402	408	421	405	416	414	419	408	393	387	377	385	377	390	415	396	398	401	384	370	406
Adult	393	390	375	387	389	391	367	352	373	378	388	399	381	385	381	387	375	370	361	353	359	360	364	393	372	377	383	366	351	386
Peds	19	23	19	21	21	22	23	26	26	24	20	22	24	31	33	32	33	23	26	24	26	17	26	22	24	21	18	18	19	20
◆ SYSTEM AVL	267	262	271	262	260	258	273	276	259	257	262	223	247	233	239	235	248	249	259	269	260	274	260	248	252	263	252	264	278	244
Adult	219	218	223	216	214	213	229	235	218	214	215	178	204	197	205	200	214	205	218	226	219	224	219	203	209	217	203	215	230	197
Peds	48	44	48	46	46	45	44	41	41	43	47	45	43	36	34	35	34	44	41	43	41	50	41	45	43	46	49	49	48	47
■ SYSTEM TTL	679	675	665	670	670	671	663	654	658	659	670	644	652	649	653	654	656	642	646	646	645	651	650	663	648	661	653	648	648	650
Adult	612	608	598	603	603	604	596	587	591	592	603	577	585	582	586	587	589	575	579	579	578	584	583	596	581	594	586	581	581	583
Peds	67	67	67	67	67	67	67	67	67	67	67	67	67	67	67	67	67	67	67	67	67	67	67	67	67	67	67	67	67	67

05/12/21

COVID 19 ORANGE COUNTY HOSPITAL SYSTEM DATA (CA SNOWFLAKE SERVER)

VENTILATORS (04/12/21 - 05/11/21) | 33 ACUTE CARE FACILITIES REPORTING

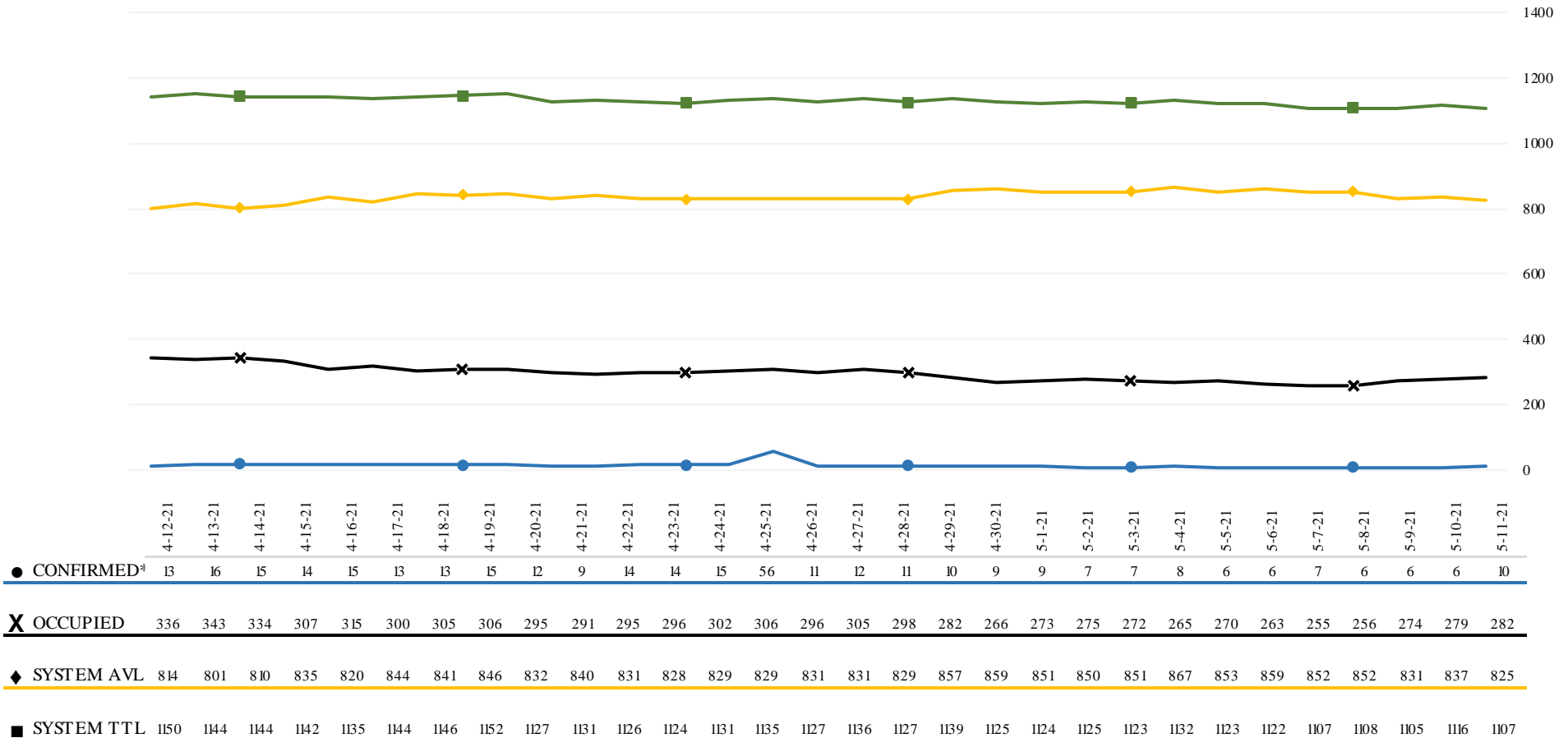
VENTILATOR INSIGHTS
04-12-21 thru 05-11-21:

● Confirmed COVID+ patients on ventilators decreased by -23.1%.

X Occupied ventilators decreased by -16.1%.

◆ System available ventilators increased by 1.4%.

■ Total system ventilators decreased by -3.7%.



*Confirmed includes ED values

*Data Source: California Department of Public Health (CDPH) – Snowflake server

**Current Snowflake Data Dictionary may be found at:

https://www.calhospital.org/sites/main/files/file-attachments/data_dictionary_cha_covid_tracker_4-17-20.pdf

Acute Care Hospital PPE / Ventilator Supplies Days on Hand – (31/33 ACHs reported)

Reporting Date: 05/11/21*	30 days +	15-30 days	7-14 days	4-6 days	0-3 days	Not Reported
Ventilator Supplies**	8	6	14	2	1	2
N95 Masks**	26	5	0	0	0	2
Surgical Masks**	27	3	1	0	0	2
Face Shields**	24	3	3	1	0	2
Gloves**	17	5	6	2	1	2
Gowns**	23	7	1	0	0	2

Hospital Criteria for shifting to Crisis Care Strategies

LEGEND

CRITERIA	STATUS		
	Normal Operations	Modified Operations	Modified Operations Assistance Needed
Rate of change in Hospitalized COVID-19 patients (doubling time over last 7 days)	Never to 4 weeks to double	4 weeks to 2 weeks to double	Less than 2 weeks to double
Absolute COVID-19 Census in the hospitals across Orange County	Less than 750	750-1500	>1500
Hospital census as a percentage of staffed capacity	<80%	80% to 90%	>90%
Hospital ICU census as a percentage of staffed ICU capacity	<70%	70% to 85%	>85%

Hospital Criteria for shifting to Crisis Care Strategies

05/11/21

CRITERIA	STATUS		
	Normal Operations	Modified Operations Under Control	Modified Operations Assistance Needed
Rate of change in Hospitalized COVID-19 patients (doubling time over last 7 days)	Never to 4 weeks to double		
Absolute COVID-19 Census in the hospitals across Orange County	83		
Hospital census as a percentage of staffed capacity	66%		
Hospital ICU census as a percentage of staffed ICU capacity	62%		

AGENCY OPERATIONS CENTER / LOGISTICS SECTION

- The AOC is activated on **Wednesdays from 0900-1600 at Level II**; Warehouse Ops are M-F - 0900-1600.
- SCARCE Resources: Gloves, Syringes, Needles

Total Activity – Updated 5/5/21 at 1530

INQUIRIES	RR RECEIVED	RR FILLED
19,367 +36	11,708 +66	9,600 +76
Total Denied Requests: 896 / Total Redacted Requests: 967		

Inventory Report 02/18/20 to 05/11/21

Logistics Daily Units Distributed 5/5/21

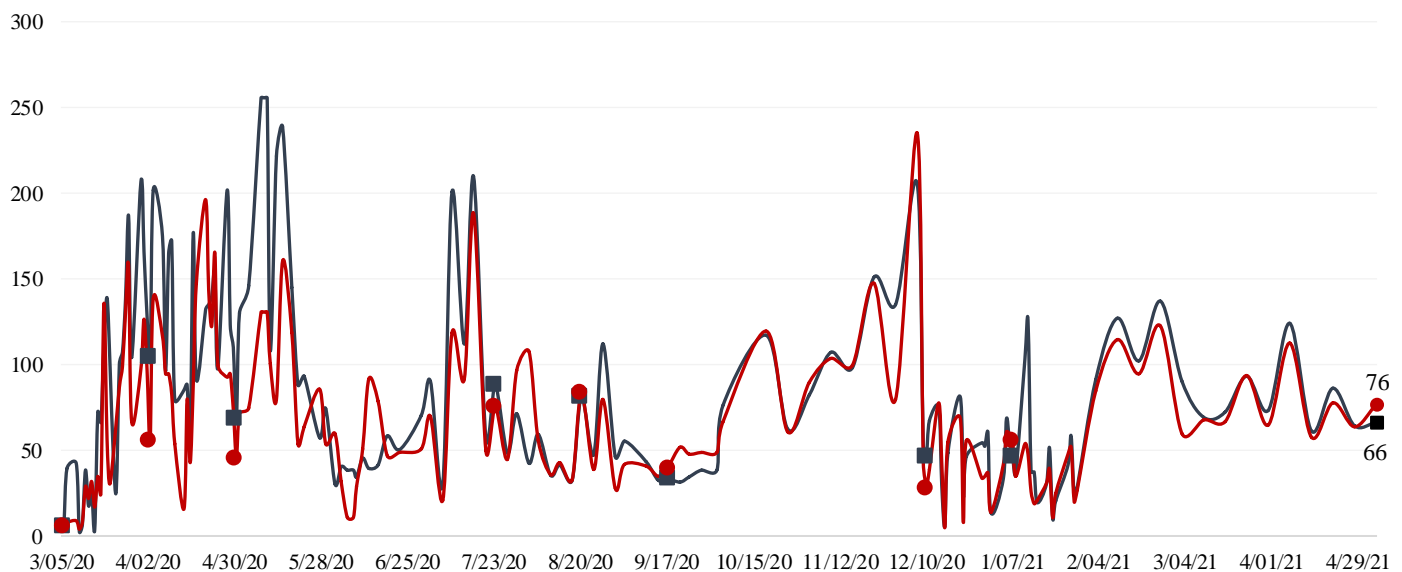
N95 Mask	10,400
Surgical Mask	4,500
Gown	6,100
Gloves	70,500
Face Shields/Eye Protection	0
Hand Sanitizer	200
Other	9,744
Total Units	101,444

Medical Supply/Equipment Total Units Distributed

N95 Mask	5,288,555
Surgical Mask	2,206,355
Gowns	2,991,566
PPE-Suit	18,065
Gloves	9,262,170
Eye Protection	427,508
Hand Sanitizer	320,581
Other Items	4,074,220
Total Units	24,589,020

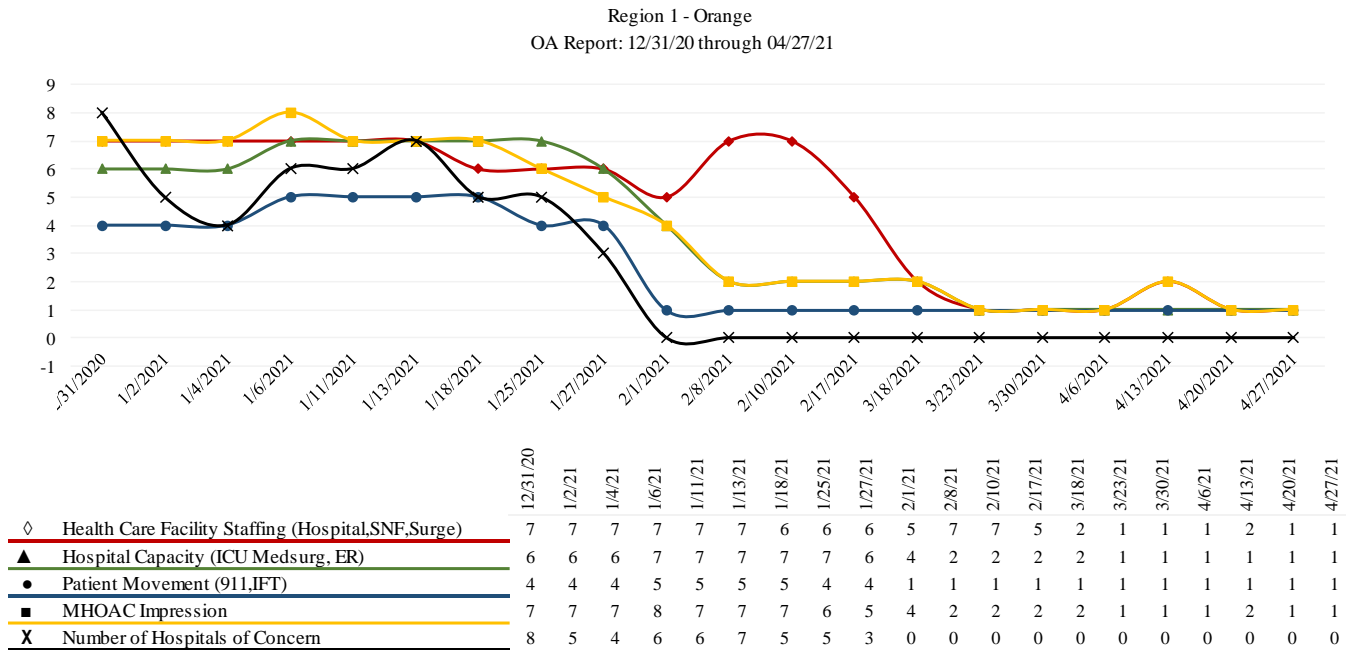
Resource Requests - Updated 5/5/21 at 1530

Received ■ Filled ●



MHOAC IMPRESSION REPORT TO CDPH

- The MHOAC provides a weekly “temperature check” report to CDPH which is an impression of the current status of the local medical/health system in several key areas.
- The results of these reports have been tracked and trended over time and are included below.



ALTERNATE CARE SITE (ACS)

- Fairview Alternate Care Site (FACS) opened for admissions on **TUESDAY, 12/15/20 @ 1800**
- **FACS was placed into a “warm close” status on MONDAY, 03/15/2021.** A “warm close” will allow the State of California to maintain the ACS in a semi-ready state and will enable the site to reopen within 72 hours if needed.

Fairview (COVID-19 +)		
Patient Census (as of 3/13/2021 09:00)	CURRENT	TOTAL
Orange County	0	140
LA County	0	71
Riverside	0	6
San Bernardino County	0	4
Ventura County	0	1
Total patients CENSUS / TOTAL ACCEPTED	0	222
Patients Discharged		TOTAL
DISCHARGED		222
Memory Care Unit (MCU) Census (as of 3/2/2021 17:00)		
MCU Patient Census	5	50
Patients Discharged from MCU		TOTAL
MCU - DISCHARGED		45

