



MHSA Innovation (INN) Public Hearing

- Young Adult Court INN Proposal
- Clinical High Risk for Psychosis INN Proposal
- Community Program Planning INN Proposal

April 13, 2022

Young Adult Court (YAC) INN Proposal

**Examining Whether Integrating
Early Intervention Services into a
Specialized Court Improves the
Well-Being of Justice-Involved
Young Adult Men:**

A Randomized Controlled Trial



PRIMARY NEED

- Within the justice system, young adults are traditionally processed and sanctioned with the same rules and regulations that apply to mature adults
- Young adulthood is a sensitive period of development with critical transitions in several domains (e.g., education, employment, housing, parenthood, etc.)
- Many justice-system-involved young adults have serious pre-existing risk factors for a variety of psychosocial and health-related problems



Orange County Young Adult Court

Click on the link above to watch a brief video

Specialized Court

Developmental Focus

2-year diversion program

Reduce/Dismiss Felony

INNOVATION

What currently exists.....

Interagency collaboration to divert youth through YAC

Probation officer & case managers

Empirically robust Randomized Controlled Trial with pilot data

What we will do.....

Behavioral health services integrated within YAC

Expand the research from pilot phase to power analysis

Extend the research to measure long-term outcomes, including whether racial, ethnic, and socioeconomic disparities are reduced

YAC INN PROJECT DESCRIPTION

Behavioral Health & Supportive Services:

- Trauma-informed, culturally-sensitive early intervention mental health and co-occurring services (new)
- Peer mentoring by YAC program graduates (new)
- Apprenticeship programs (new)
- Financial literacy courses (new)
- Scholarships to pursue degrees and certifications (expanded from pilot)
- Childcare resources (new)
- Housing and transportation vouchers (expanded from pilot)
- Other services tailored to the young adult's needs (new)

RCT Study Design:

- Eligible young men are 1) notified about whether they have been randomized into the YAC or to traditional court; 2) asked whether they would like to participate in the RCT pilot; 3) and, if yes, complete the informed consent process.
 - *No participant assigned to a traditional court is denied or intentionally delayed from being referred to needed services.*
 - *Young men also have the option to participate in the Young Adult Court without having to participate in the YAC RCT pilot.*
 - *Study eligibility criteria were determined by the Court and District Attorney's Office and cannot be adjusted for this project.*
- Study participants complete structured interviews at baseline and then 8 more times over 4 years.

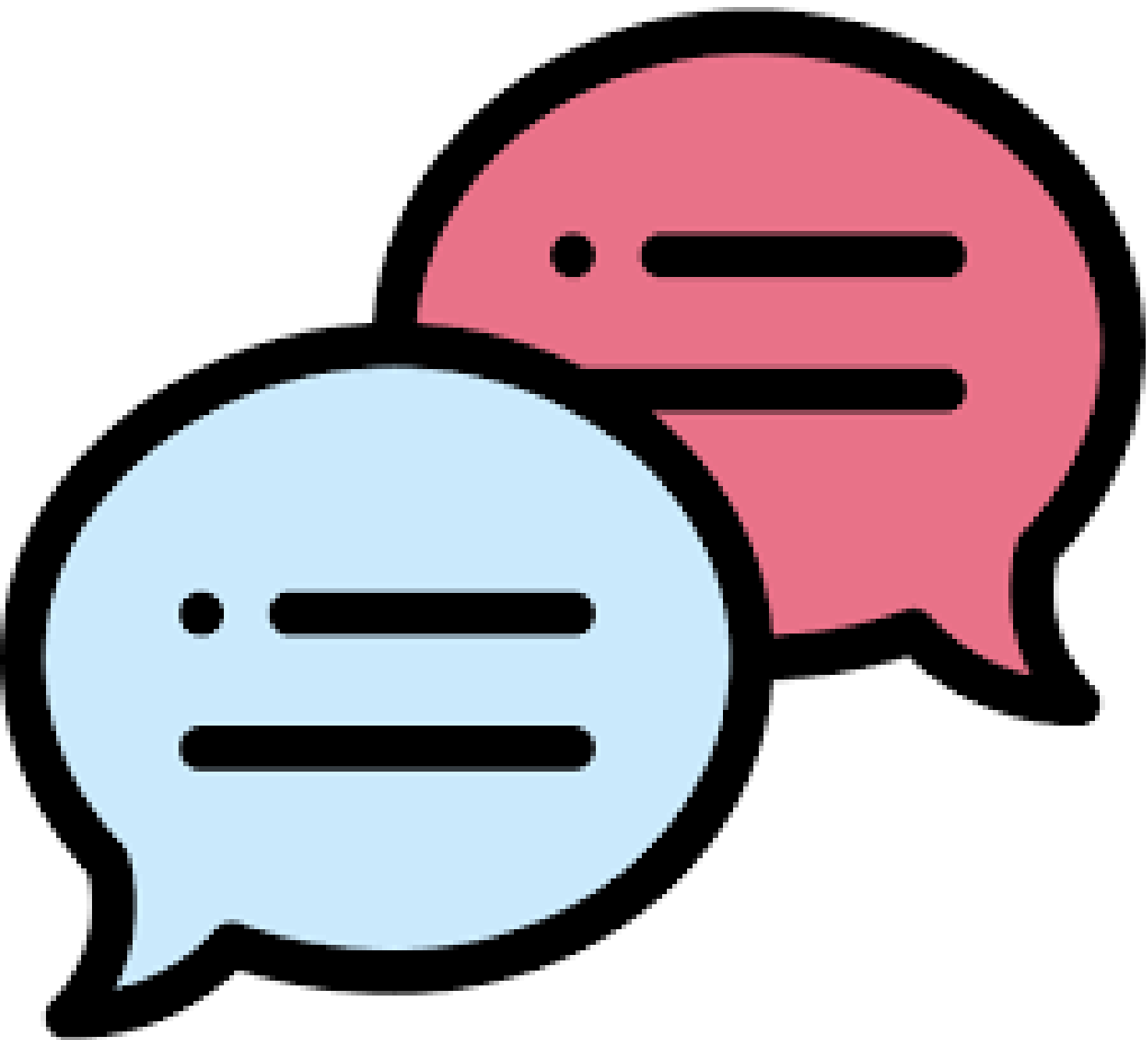
YAC INN PROJECT OVERVIEW

- **Primary Purpose:**
 - Promote interagency and community collaboration related to Mental Health Services or supports or outcomes
 - Increase access to mental health services to underserved groups
- **MHSA INN Project Requirement:**
 - Makes a change to an existing practice in the field of mental health, including but not limited to, application to a different population
- **Learning Objectives:**
 - Understand whether the OC Young Adult Court “works”
 - Reduces the impact of mental health and/or substance use conditions?
 - Promotes prosocial & positive socio-economic outcomes?
 - Reduces recidivism?
 - If the Young Adult Court works, we want to know:
 - Why it works
 - Whether it reduces racial, ethnic, and socio-economic disparities
- **Project Duration:**
 - 5 years
- **Total Budget:**
 - Not to exceed \$12 million over 5 years

YAC TOTAL ESTIMATED INN COSTS

YAC MENTAL HEALTH AND SUPPORTIVE SERVICES			
Category of Expense	Est. Annual Cost*	Est. 5-Year Cost	Notes
Clinical Staffing	\$755,546	\$3,420,864	Principal Investigator, Clinical Director, Multiple Clinicians and Clinical Trainees. Includes salaries and benefits (N=8)
Clinic Office Space & Operational Costs	\$110,026	\$547,214	Includes start up, supplies, on-going lease, insurance and other operating expenses including parking validation if space has paid parking (to reimburse participants for parking)
Flexible Funding For Participants	\$245,600	\$1,231,000	N=300 estimated participants; Housing support, education, childcare, transportation, etc.
DIRECT CLINICAL	\$1,111,172	\$5,199,078	
YAC RCT RESEARCH STUDY			
Research Staffing	\$689,292	\$3,329,006	Principal Investigator, Research Manager, Administrative Manager, multiple Research Staff; Includes salaries and benefits (N=7)
Research Staff Training, Supplies, Study Travel, etc.	\$17,631	\$94,719	Includes training, computers, interview tablets, travel reimbursement for participant interviews, etc.
Stipends for Participants	\$53,710	\$234,188	N=300 incentives/stipends, etc.
DIRECT RESEARCH	\$760,633	\$3,657,912	
UCI INDIRECT	\$261,437	\$1,243,366	15% rate
HCA ADMIN/ INDIRECT	\$383,984	\$1,818,064	18% rate
PROJECT TOTAL	\$2,517,225	\$11,918,420	

* Year 3 as example, other years vary



YAC INN
Proposal
30-Day Public
Comments

PUBLIC COMMENT #1

- Public comment #1 provides a general summary of the Young Adult Court initial pilot as a randomized controlled trial and potential for results to support the positive impact of more developmentally appropriate consequences for young adults.
- Comment highlights the goal of the project to improve quality of care and better outcomes and offers support for the Innovation project proposal.

Response:

- Thank you for your feedback.

PUBLIC COMMENT #2

- Public comment #2 identified several projects that appear similar to the YAC INN Proposal:
 - California Judicial Council
 - California Association of Youth Courts
 - Baltimore City Teen Court Evaluation
 - San Diego Teen Court

Response:

- The programs cited above are all Teen Courts. The YAC program serves adults ages 18-25. Please refer to page 7 of the INN proposal for the developmental rationale of the project.
- Although other young adult courts and transitional-aged youth programs exist, none have been evaluated through an RCT study design. Pre-post evaluations cannot robustly assess demonstrated effectiveness in the same way as an RCT. The YAC INN proposal will extend and expand the rigorous RCT design, which is consistent with the INN Primary Purpose of “Promote interagency and community collaboration related to Mental Health Services or supports or outcomes.”

PUBLIC COMMENT #3

- Public comment #3 expressed support for the YAC INN proposal and noted that based on personal experience it is a step in the right direction.

Response:

- Thank you for your feedback.

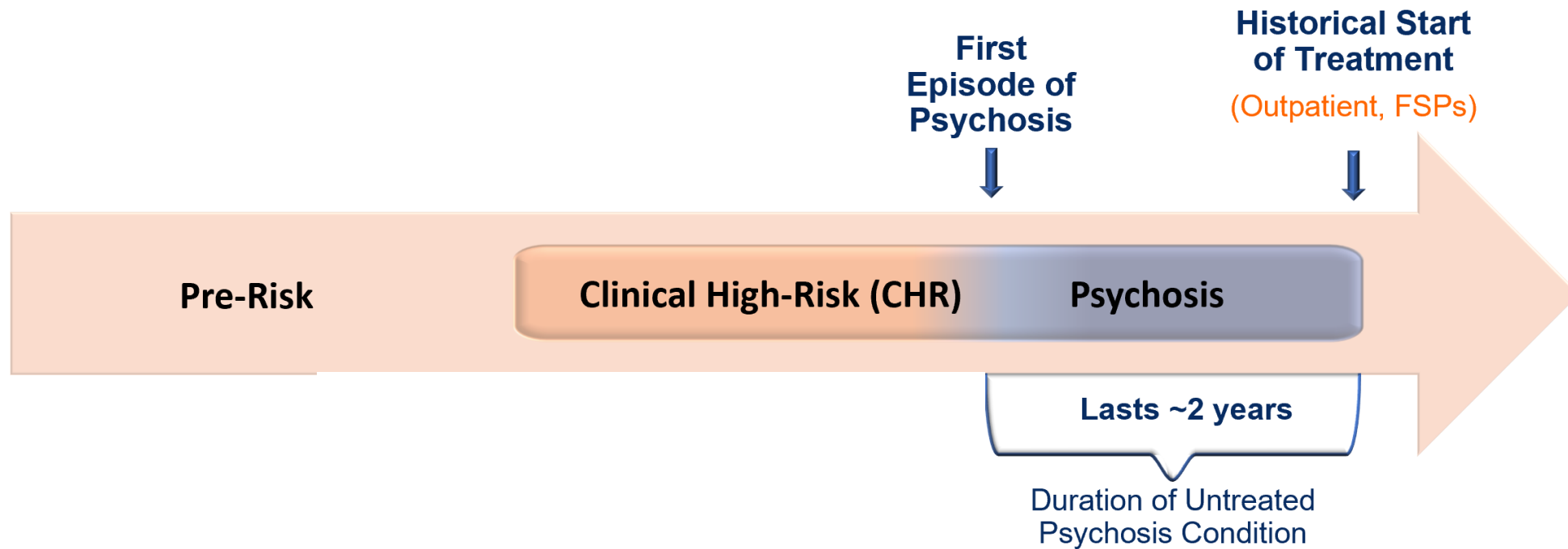


Clinical High Risk for Psychosis INN Proposal

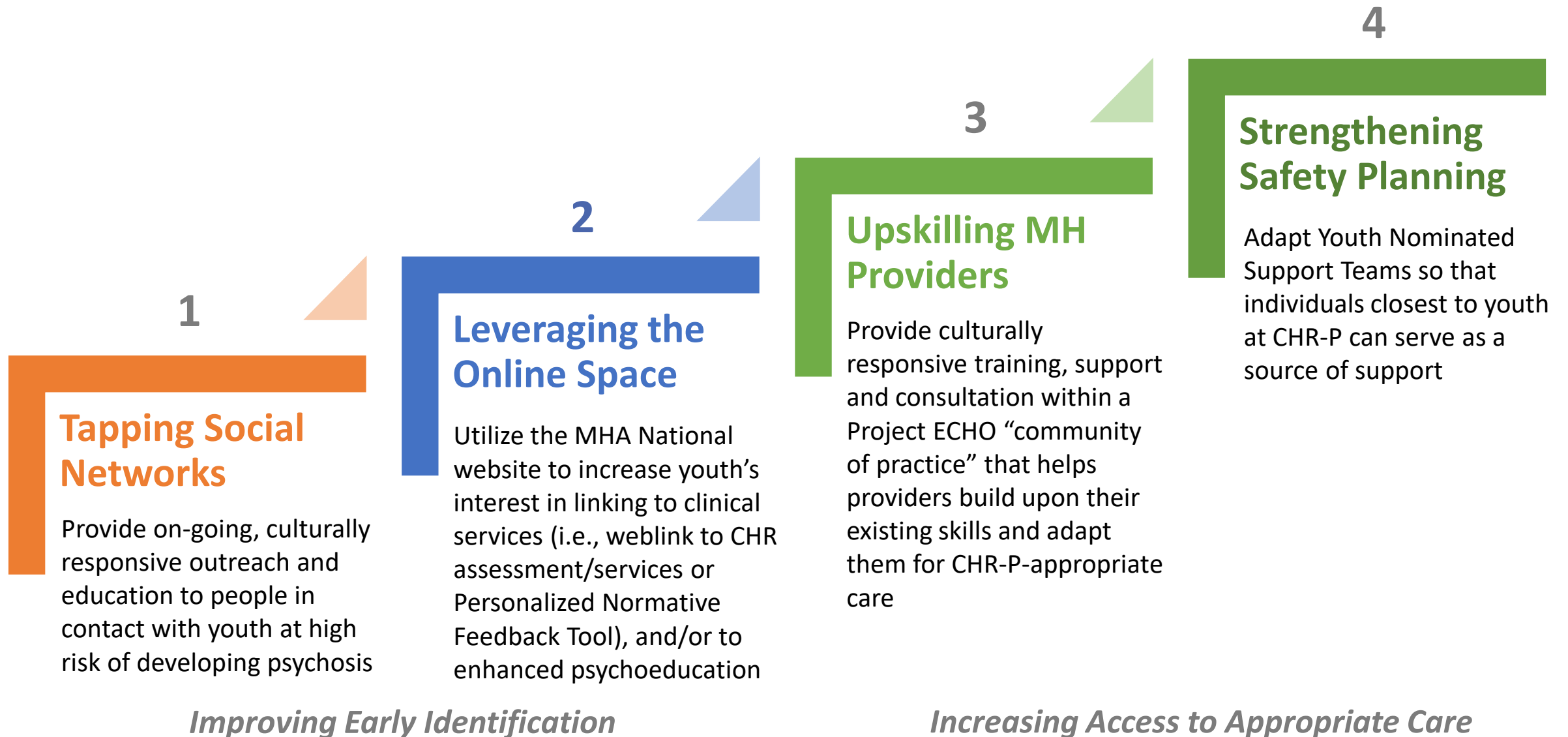
**Improving the Early Identification of Youth at
Clinical High Risk for Psychosis (CHR-P) and
Increasing Access to Care**

PRIMARY NEED

- 12,000 adolescents and young adults develop a first episode of psychosis each year
- Delays in needed, effective treatment can result in heavy impacts on:
 - Life expectancy by 20 years
 - Risk of suicide
 - Independent functioning
 - Family functioning
 - Quality of life
 - \$155 billion per year in the United States

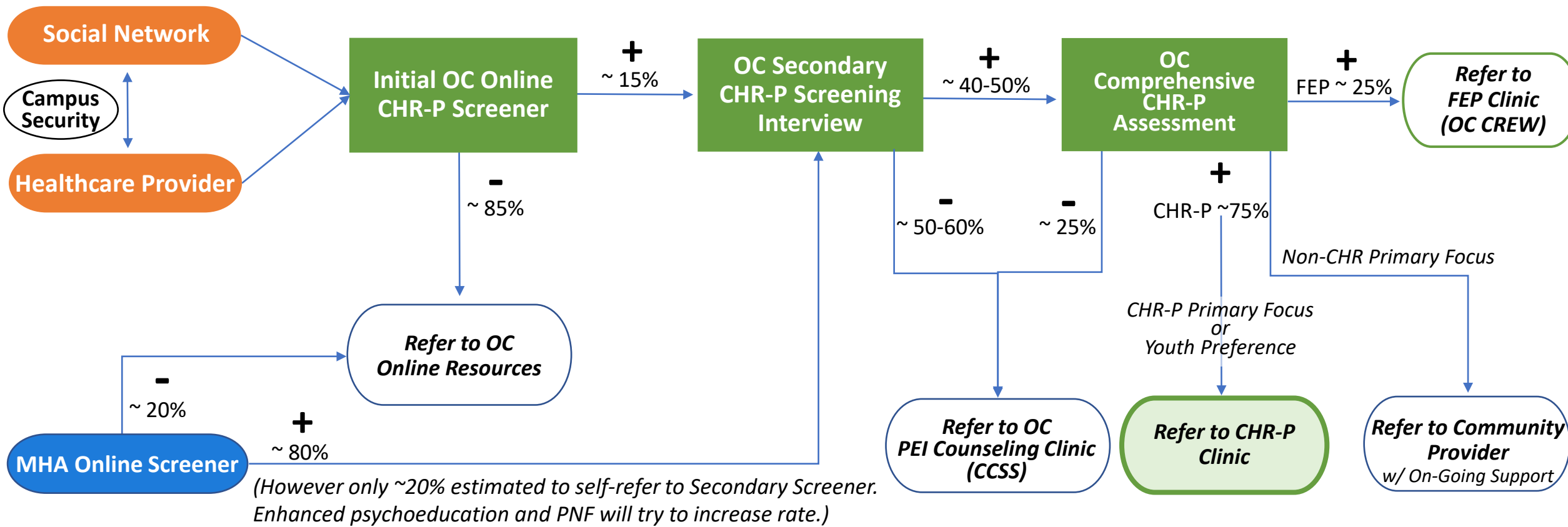


CO-DEVELOP AN INTEGRATED COMMUNITY OF CARE & SUPPORT



CHR-P SCREENING-TO-SUPPORT PROCESS FLOW

Training in early identification of Clinical High-Risk-P (CHR-P) indicators...
... can result in a referral to start a multi-step CHR-P screening process that connects youth to the appropriate level of care based on their clinical needs



Legend
- Negative screening result
+ Positive screening result

CHR-P PROJECT OVERVIEW

- **Primary Purpose:**
 - Increase access to mental health services to underserved groups
- **MHSA INN Project Requirement:**
 - Makes a change to an existing practice in the field of mental health, including but not limited to, application to a different population
- **Learning Objectives: To what extent can we...**
 1. ... improve the knowledge and skills of potential responders within young people's naturally existing social networks so they feel a) better equipped with how to recognize a young person who may be experiencing symptoms of CHR for psychosis, and b) more comfortable with knowing when and how to refer youth for screening and/or treatment services?
 2. ... engage with young people online, where many youth first go for information, and identify ways to increase the likelihood that youth who are clinical high risk for psychosis move from the online space to seeking available mental health services through a stepped screening process?
 3. ... expand the number of mental health providers qualified to work with youth at CHR-P by training them on a modularized approach to care that builds upon providers' existing skills and adapts them for youth at CHR for psychosis and supporting their learning through the University of New Mexico's Project Echo model?
 4. ... improve one of the core elements of CHR-P intervention – safety planning – by implementing and evaluating the Youth-Nominated Support Teams (YST) approach adapted to CHR-P population?
- **INN Project Duration:**
 - 5 years
- **Total Budget:**
 - Not to exceed \$38 million over 5 years
 - ***New opportunities to leverage additional sources of revenue are available so not all costs are from Innovation***

CHR-P INNOVATION PROJECT BUDGET SUMMARY

Budget Category	5-Year Staffing	5-Year Services & Supplies	5-Year Indirects
CHR-P Outreach, Training, Clinical and Consultation Services: \$24.73 million total over 5 years			
Project Management	\$3.41 million		
Potential Responder & Provider Training	\$2.38 million		
CHR-P Screening & Assessment Services	\$2.32 million		
CHR-P Clinic & Consultation Services	\$7.65 million		
Community Co-Development	\$595 thousand	\$1.04 million	
Evaluation	\$1.68 million	\$50 thousand	
CHR-P Services, Supplies, Indirects		\$2.38 million	\$3.23 million
MHA National Online Services: \$9.8 million total over 5 years			
Platform Enhancements & Evaluation	5.17 million	\$3.34 million	\$1.28 million
HCA: \$3.47 million total over 5 years			
HCA Administrative & Indirects		\$3.47 million	
Total Project budget not to exceed \$38 million over 5 years			

CHR PROJECT BUDGET SUMMARY


Revised 5-year CHR-P System of Care Total MHSA = ~\$29.7 M

- **New CHR-P Outreach, Training, Clinical, Consultation: ~\$18.4 M PEI**
- **New MHA National Online Screening/HCA Admin: ~\$11.3 M INN**

Budget Category	5-Year Staffing	5-Year Services & Supplies	5-Year Indirects
CHR-P Outreach, Training, Clinical and Consultation Services: \$24.73 million total over 5 years			
Project Management	\$3.41 million		
Potential Responder & Provider Training	\$2.38 million		
CHR-P Screening & Assessment Services	\$2.32 million		
CHR-P Clinic & Consultation Services	\$7.65 million		
Community Co-Development	\$595 thousand	\$1.04 million	
Evaluation	\$1.68 million	\$50 thousand	\$170 thousand
CHR-P Services, Supplies, Indirects		\$2.38 million	\$3.23 million
MHA National Online Services: \$9.8 million total over 5 years			
Platform Enhancements & Evaluation	5.17 million	\$3.34 million	\$1.28 million
HCA: \$3.47 million total over 5 years			
HCA Administrative & Indirects	\$3.47 million total over 5 years		
Total INN Project budget not to exceed \$38 million over 5 years (original)			

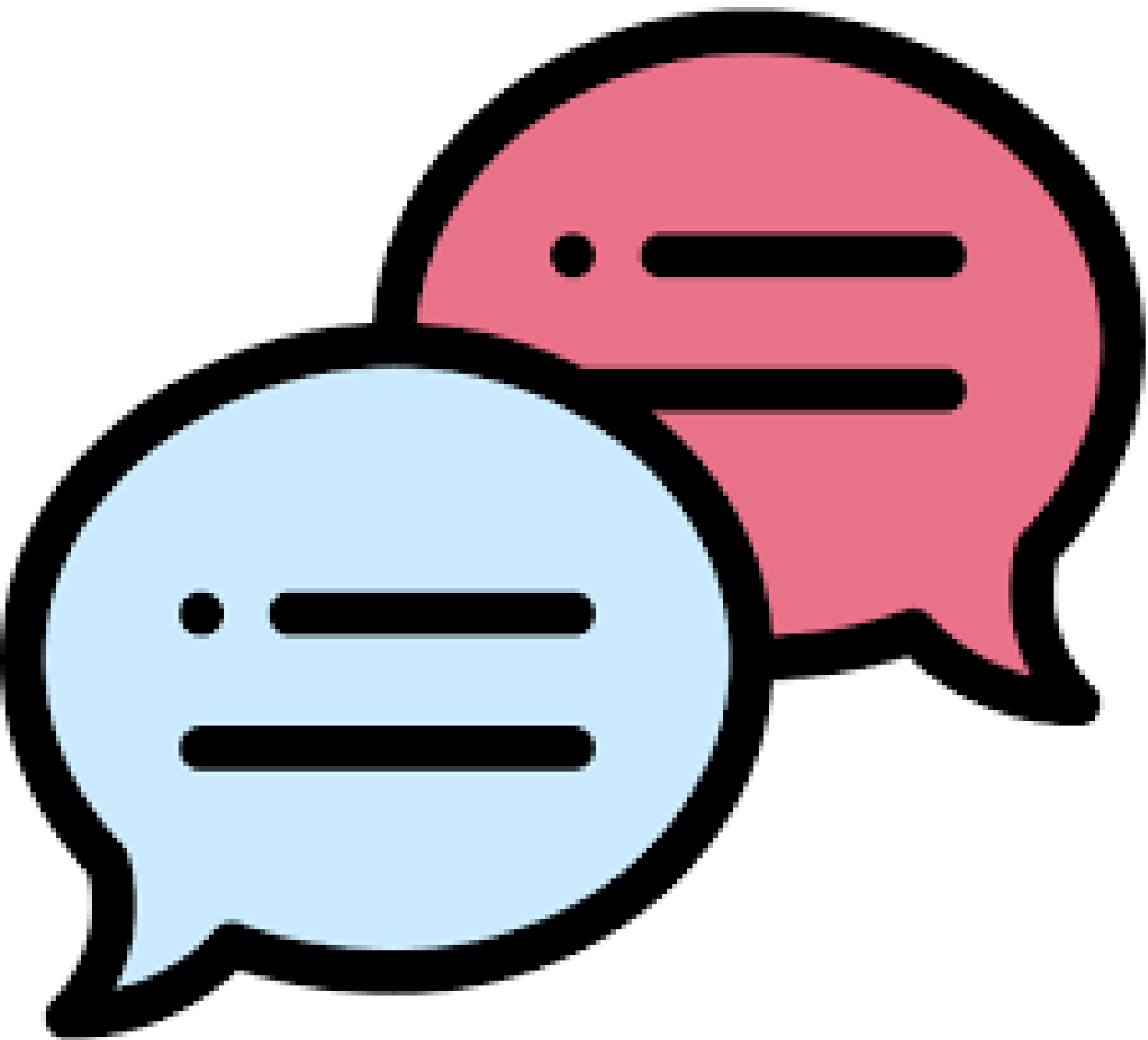
Change to Original INN Budget by Leveraging Additional Funding Sources:

- Reduction of ~\$6.3 M (over 5 years) by:
 - Pausing implementation of Youth-Nominated Support Team (YST) during NIMH study (~ \$2 M)
 - Moving some CHR-P services to SAMHSA grant (\$1.6 M potential)
 - Applying resulting savings in reduced CHR-P services, supplies & indirects
 - Truing up est. Y1 PEI expenditures
- Reduction of ~\$1.9 million (over 5 years) by moving CHR-P/YST evaluation costs to SAMHSA and NIMH grants
- No changes
- Reduction of ~\$2 million (over 5 years) in HCA INN Admin/Indirects
- Revised 5-year INN total = ~\$11.3 million**

A close-up photograph of a pair of hands, likely belonging to a child, gently cupping a bright red, glossy heart. The hands are positioned on the left side of the frame, with the fingers slightly curled around the heart. The background is a soft, out-of-focus grey.

*My only wish is
that I got these
services earlier*

Graduate of OC CREW
expressing their gratitude and appreciation for program services



CHR-P INN
Proposal
30-Day Public
Comments

PUBLIC COMMENT #1

- Public comment #1 noted the difference between the YAC and CHR proposals and identified several areas of concern with the CHR INN Proposal, including project outcomes tracking and publication, use of Youth Nominated Support Teams, evaluation design and lack of informed consent and IRB support.

Response:

While the YAC project is 2 years into its implementation, the CHR proposal is a new project that is being built with the community. As a result of this approach, the methodology and framing will be developed alongside the community.

The IRB application is referenced through the proposal. Please see p. 27 for details about the IRB application within the first year of the project timeline.

PUBLIC COMMENT #2

- Public comment #2 notes the existing programs and screening tools focused on early identification of mental health conditions, including psychosis.
- The comment highlights the need to address early screening in the proposal and improve the coordination and collaboration to current screenings and services.

Response:

- We agree that this would be an excellent opportunity for collaboration and coordination so that we do not unnecessarily duplicate efforts and collectively reach as many youth and families in need of services.



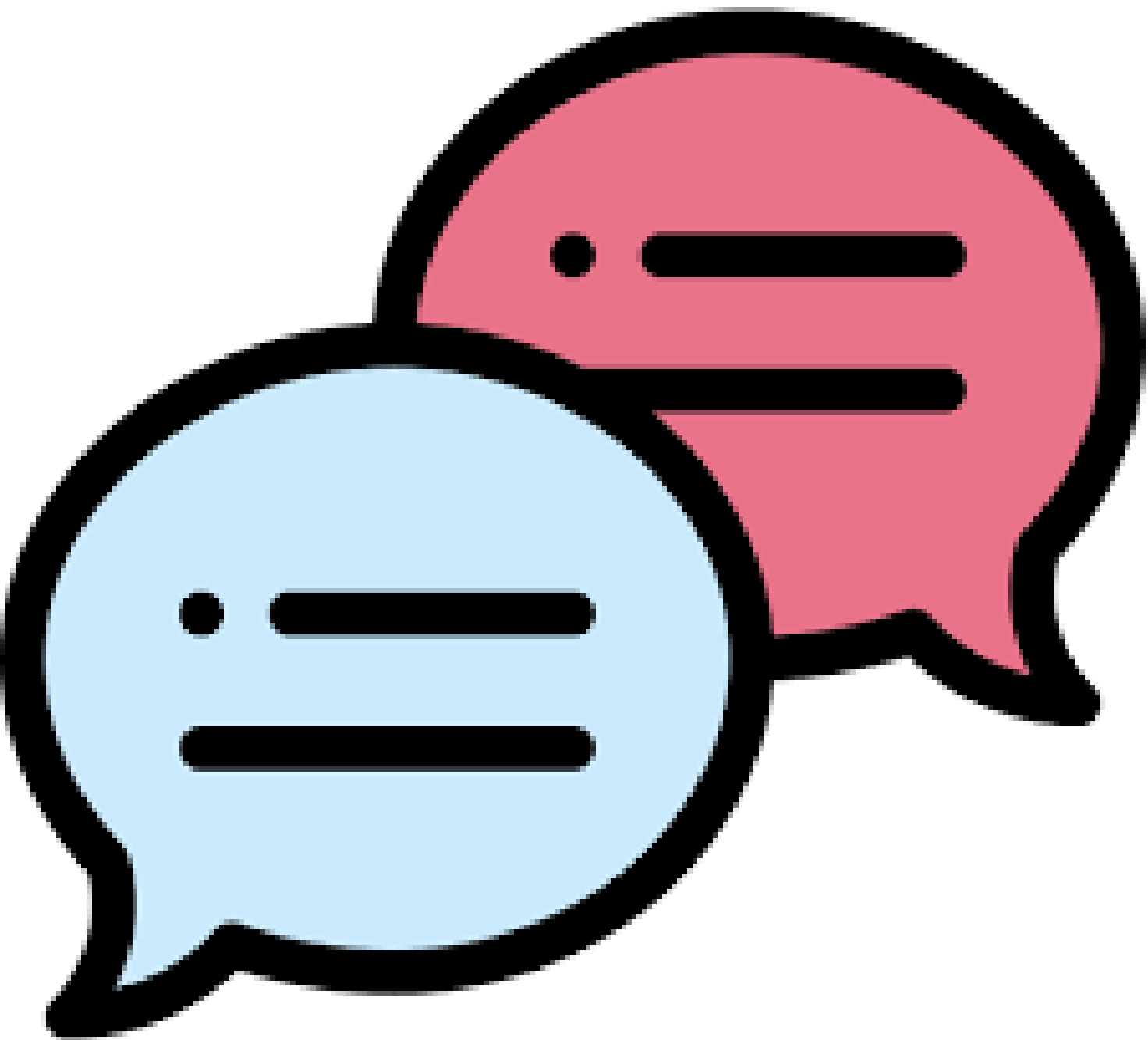
Community Program Planning INN Proposal

PRIMARY NEED

- Additional community planning efforts are needed to reach the broader community and gather meaningful input
- Orange County anticipates an increase to \$11M annually and \$73.7M in available INN funding through FY 2027-28. Without the ability to utilize INN dollars toward staff time and resources needed to develop new proposals, Orange County will revert these dollars.
- INN concept development, research activities, community engagement and proposal development can take up to nine months or longer
- Factors such as staff capacity and community feedback may result in further delays or inability to continue pursuing potential ideas.

PROPOSAL DESCRIPTION

- Utilize \$950,000 INN funds toward community planning and related activities for new and/or ongoing INN Plans over the next 5 years
- Planning and related activities include:
 - INN staff time and support
 - Translation and interpretation services
 - Consultants/Subject Matter Experts to support and/or facilitate meetings
 - Marketing strategies and materials to reach the broader community
 - Program supplies (e.g., stipends; transportation costs; printing, etc.).
- INN staff will provide ongoing reports about its community planning efforts



Community
Program Planning
INN Proposal
30-Day Public
Comments

PUBLIC COMMENT #1

- Public comment #1 noted the challenge in developing INN projects, including time and effort and expressed support for the INN Community Program Planning Proposal.

Response:

- Thank you for your feedback.

Thank You!