

2019 Statewide Medical & Health Exercise



Dam Failure Scenario



Functional Exercise

Exercise Overview

Updated: October 28, 2019

2019 Statewide Medical & Health Exercise

Orange County Exercise Overview

Exercise Hazard/Theme:

Prado Dam failure with heavy rainfall causing intermittent utility outages (water, power, sewer) across the county.

Potential Impacts

- ♦ Flood
- ♦ Evacuation
- ♦ HazMat
- ♦ Trauma
- ♦ Transportation
- ♦ Utilities
- ♦ Medical Surge
- ♦ First Responder Availability
- ♦ Diminishing Resources

Exercise Purpose & Scope:

This Functional Exercise is planned at multiple sites throughout Orange County. Participants will include the Health Care Coalition of Orange County (HCCOC) with representation from OCHCA, Ambulance Providers, Hospitals, Clinics, Skilled Nursing Facilities, Long Term Care Facilities, Dialysis Centers, and other healthcare facilities.

Wednesday

November 20th, 2019

12:00 p.m. – 4:00 p.m. (4 hours in the afternoon)

Draft System-wide Objectives:

Information Sharing

Assess the ability of local healthcare organizations within the Health Care Coalition of Orange County (HCCOC) to share emergent information with internal and external stakeholders, ensuring communication feedback from the Orange County Health Care Agency Operations Center.

Resource Management

Assess the capability of healthcare organizations within the HCCOC to identify the need and request various logistical resources (e.g., personnel, supplies and equipment) through identified channels of coordination.

Additional Objectives

Note, any additional objectives are welcome to be tested internally at each individual facility.



PRADO DAM

Additional Points of Information:

- ◆ Public Information Officer Conference Call: Hospital participation only.
- ◆ Evaluator Training—this year evaluations will be conducted differently. Due to this change, the Health Care Agency will be providing training on this new approach. Each training is scheduled to be two hours long and will be offered on two separate dates and times. You only need to attend one of the sessions listed below:

Morning Session

November 6, 2019
 Time: 9 a.m.- 11 a.m.
 2228 Ritchey St.
 Santa Ana, CA 92705

Afternoon Session

November 14, 2019
 Time: 1 p.m. - 3 p.m.
 2228 Ritchey St.
 Santa Ana, CA 92705



- ◆ Behavioral Health Services (BHS) & CARE Ambulance DOC participation can be coordinated upon your request. Point of contacts are listed below:

BHS

Rachael Ferraiolo
RFerraiolo@ochca.com

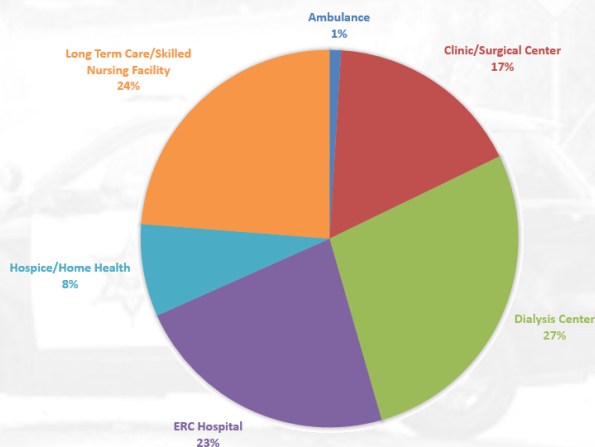
CARE Amb. DOC

Robert Viera
rob.viera@falck.com

Exercise Participant Breakdown:

Service Area	Count	%
Ambulance	1	1%
Clinic/Surgical	17	17%
Dialysis	28	27%
Hospitals	23	23%
Hospice/Home H.	8	8%
LTC/SNF	24	24%
Total	101	

PARTICIPATING HCCOC MEMBERS IN 2019 SWMHE



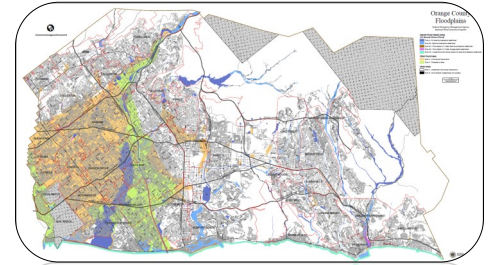


PRADO DAM

Resources & Links:

Orange County Floodplains Map

- ♦ <http://www.ocflood.com/civicax/filebank/blobdload.aspx?BlobID=8321>



Prado Dam in the News

- ♦ <https://weather.com/news/news/2019-05-17-prado-dam-california-at-risk>
- ♦ <https://www.latimes.com/local/lanow/la-me-ln-prado-dam-flood-risk-failure-20190516-story.html>
- ♦ <https://www.pe.com/2019/05/16/prado-dam-risk-rating-changed-to-high-urgency-triggering-measures-to-strengthen-spillway/>

Hospital Incident Command System (HICS) Forms

- ♦ <https://emsa.ca.gov/hospital-incident-command-system-forms-2014/>

2019 Statewide Medical & Health Exercise
EVALUATOR TRAINING
A DIFFERENT APPROACH TO EXERCISE EVALUATIONS

Target Audience:
Exercise Controller & Evaluators.

Would you like to improve your evaluation skills? Come learn how to assess exercise performance and enhance your writing skills. EMS/HEM has secured an expert in evaluation and After Action Report development. Each training is two hours long and will be offered on two separate dates and times. Limit 60 students per session.

You only need to attend one of the sessions listed below:

Morning Session	or	Afternoon Session
November 6, 2019		November 14, 2019
Time: 9 a.m. – 11 a.m.		Time: 1 p.m. – 3 p.m.
Location		Click here to register.
2228 Ritchey St. Santa Ana, CA 92705		

Remaining Exercise Schedule:

Master Scenario Event List Meeting (MSEL):

Oct. 17th, 2019 / 1 p.m. – 3 p.m.

2 Hour Evaluator Trainings:

Nov. 6th 9 a.m. – 11 a.m. / Nov. 14th 1 p.m. – 3 p.m.

Final Planning Meeting (FPM):

Nov. 7th, 2019 / 1 p.m. – 3 p.m.

Exercise Start:

Wednesday, Nov. 20th, 2019 / 12 p.m. – 4 p.m.

Controller/Evaluator Debrief:

Nov. 21st, 2019 / Times TBD

After Action Meeting (AAM):

TBD

For More Information:

Contact Stephen Noriega via e-mail at: snoriega@ochca.com for additional questions and to join the planning team.

