

**Orange County Emergency Medical Services
Medical Health Operational Area Coordination (MHOAC)**

Online at: <http://www.healthdisasteroc.org/ems/archive>

6/22/20

OVERVIEW OF CURRENT SITUATION (6/22/20 0730) Source: Johns Hopkins University & Medicine <https://coronavirus.jhu.edu/map.html>

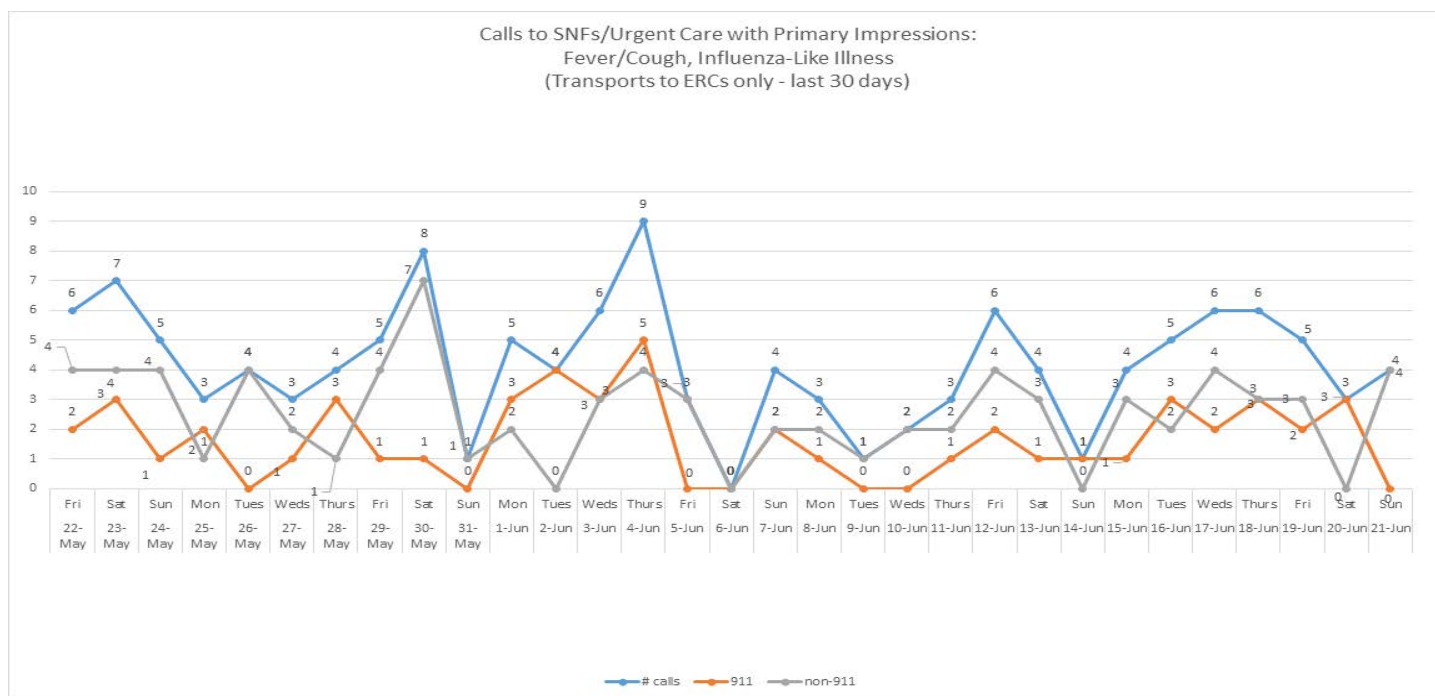
Cases / Deaths
 Worldwide: 8,979,539 / 468,881
 Nationwide: 2,281,069 / 119,977
 California: 178,224 / 5,517

PUBLIC HEALTH (as of 6/22/20 1000)

Orange County COVID-19 Summary* <i>click for full details</i>	Sat 6/20/20	Sun 6/21/20	Mon 6/22/20	Tue 6/23/20	Wed 6/24/20	Thu 6/25/20	Fri 6/26/20
Cases	9,986	10,420	10,595				
Deaths	267	269	269				
Tests Reported Today	3,842	2,784	987				
Cumulative Tests to Date	213,938	216,722	217,709				

**Data posted is always preliminary & subject to change. More information may become available as individual case investigations are completed.*

SKILLED NURSING/ASSISTED LIVING/RESIDENTIAL CARE FACILITY STATUS



Reporting Date: 6/21/20 (72 SNFs reported)	Skilled Nursing Facility PPE – DAYS ON HAND*			
	0 - 3 days	4 - 7 days	8-14 days	15+ days
N95 Masks	2	8	19	43
Surgical Masks	1	7	17	47
Eye Protection	0	9	17	46
Gowns	1	9	28	44
Gloves	0	10	19	44
Alcohol-Based Hand Sanitizer	2	11	12	47

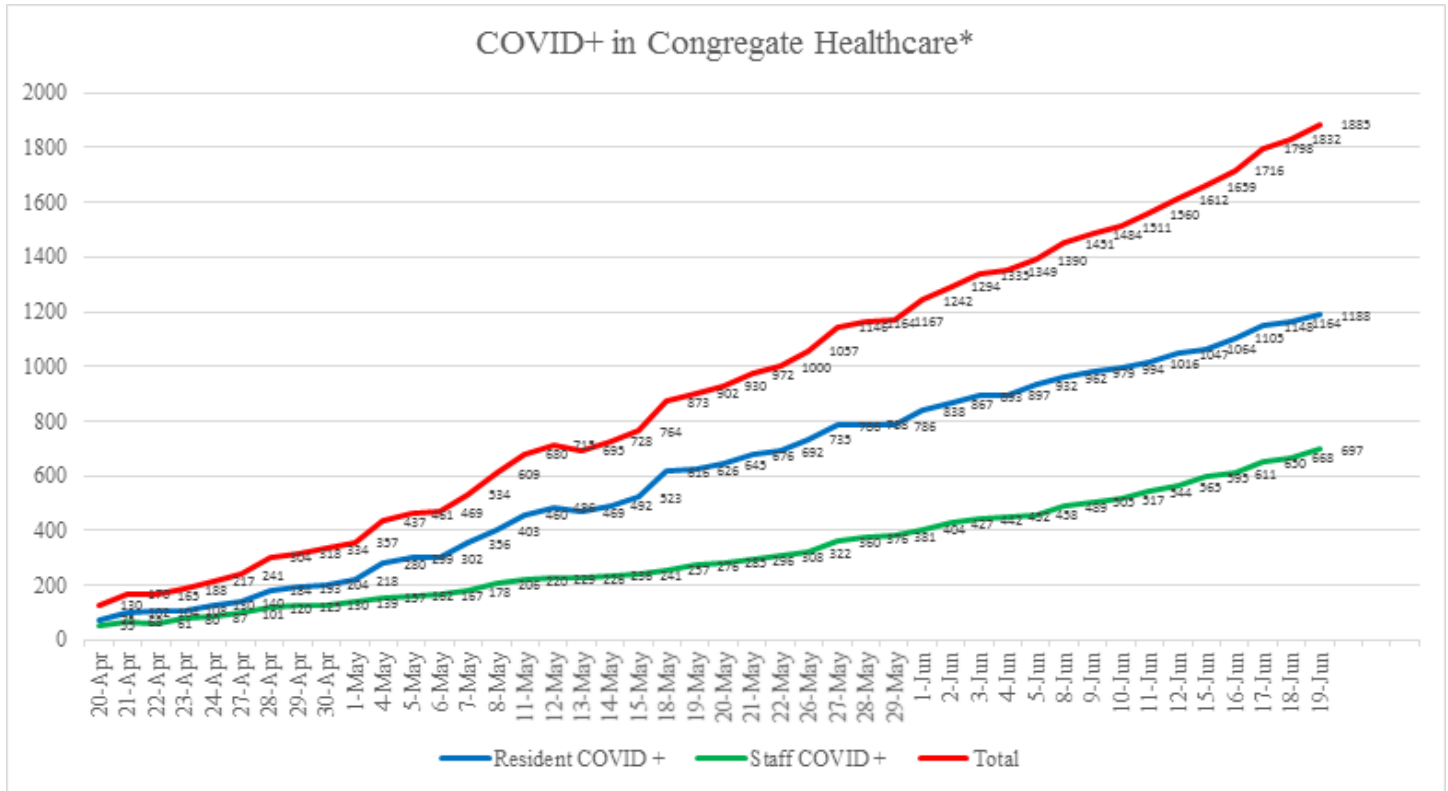
- 88% (64) SNFs have received 14-days of PPE from COUNTY STOCKPILE; Awaiting report on FEMA PPE

**Orange County Emergency Medical Services
Medical Health Operational Area Coordination (MHOAC)**

Online at: <http://www.healthdisasteroc.org/ems/archive>

6/22/20

Local Data Set



*Also includes Outbreak non-health facilities: Assisted Living, Residential Care, Acute Psych

Facility Outbreaks (as of 6/19/20 1700)

Facility Type by Licensing Category	#	An "Outbreak" is two (2) or more confirmed cases of COVID-19 in facility residents occurring within 14 days.
Skilled Nursing	30	Advanced Rehab Center of Tustin, Alamitos West Health & Rehab, Anaheim Healthcare Center, Buena Vista Care Center, Country Villa Plaza, Coventry Court, French Park Care Center, Garden Grove Convalescent Hospital, Garden Park Care Center, Gordon Lane Care Center, Harbor Villa Care Center, Healthcare Center of Orange County, Huntington Valley Healthcare Center, Kindred Brea SAU, Laguna Hills Health & Rehab, Manor Care FV, Leisure Court Nursing Center, Orange Healthcare & Wellness, Orangegrove Rehab Hospital, Pacific Haven Healthcare Center, Palm Terrace, Park Anaheim Healthcare Center, Sea Cliff Healthcare Center, Seal Beach Health & Rehab, South Coast Post Acute, St. Edna Subacute & Rehab, Terrace View Care Center, The Hills Post Acute, West Anaheim Extended Care, Windsor Gardens Center of Anaheim
Assisted Living	14	Acacia Villa, ActivCare Yorba Linda, Anaheim Crown Plaza, Brookdale Anaheim, Brookdale Nohl Ranch, Cambridge House, Golden Leisure Home, Heathers Wintergreen, Kamstra Care Home, St Francis Home, Sunflower Garden, The Groves of Tustin, The Regency, Whitten Heights

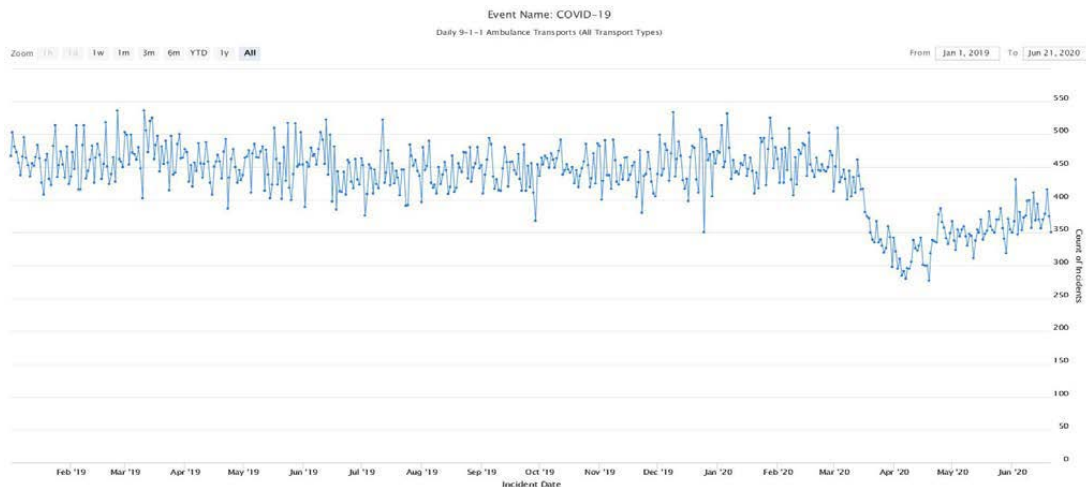
CDPH SNF Dataset

- CDPH SNF Dataset is a point-in-time snapshot of the skilled nursing facilities (SNFs) in California that have reported one or more confirmed COVID-19 cases, by either a resident or health care worker (HCW), within the previous 24 hrs

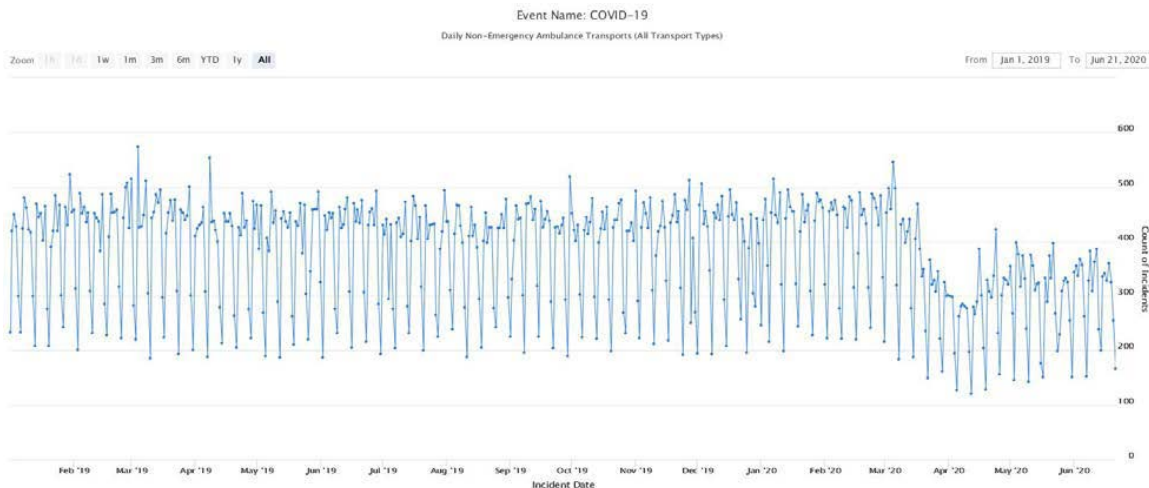
**Orange County Emergency Medical Services
Medical Health Operational Area Coordination (MHOAC)**
Online at: <http://www.healthdisasteroc.org/ems/archive>
6/22/20

EMERGENCY MEDICAL SERVICES STATUS

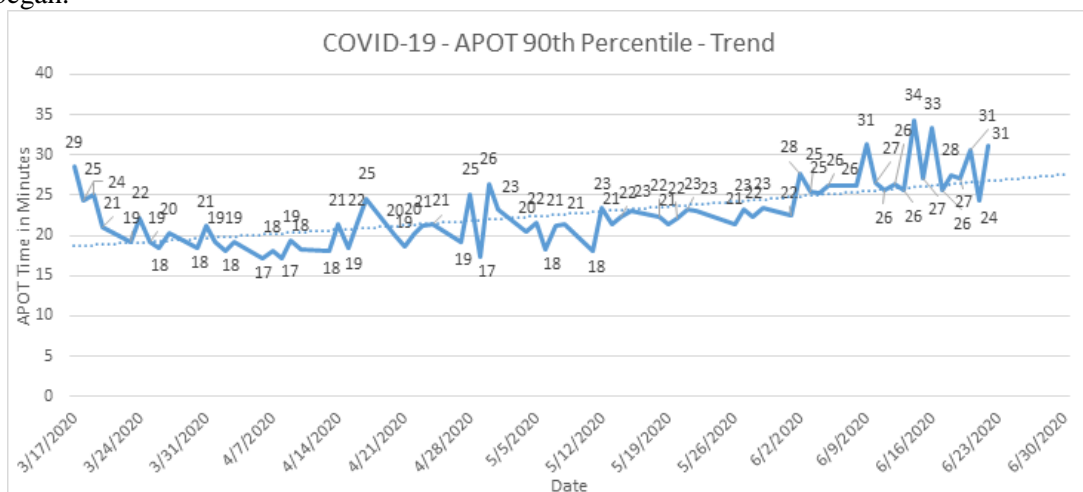
- 9-1-1 ambulance transport volume has increased but still remain about 15% below normal average.



- Non-emergency ambulance transports have increased but still remain well below normal at about 40% below average.



- Ambulance Patient Offload Time (APOT) is defined as the time the ambulance arrives at the receiving destination (wheels stop) to the time that the ambulance crew physically transfers the patient to the ED gurney. Last 24 hours: **Current Average APOT is 14m53s / Current 90th Percentile APOT is 31m12s.**
- 9 ERCs had APOT times greater than 30 minutes over the last 24 hours. The chart below displays a daily trend since COVID-19 began.

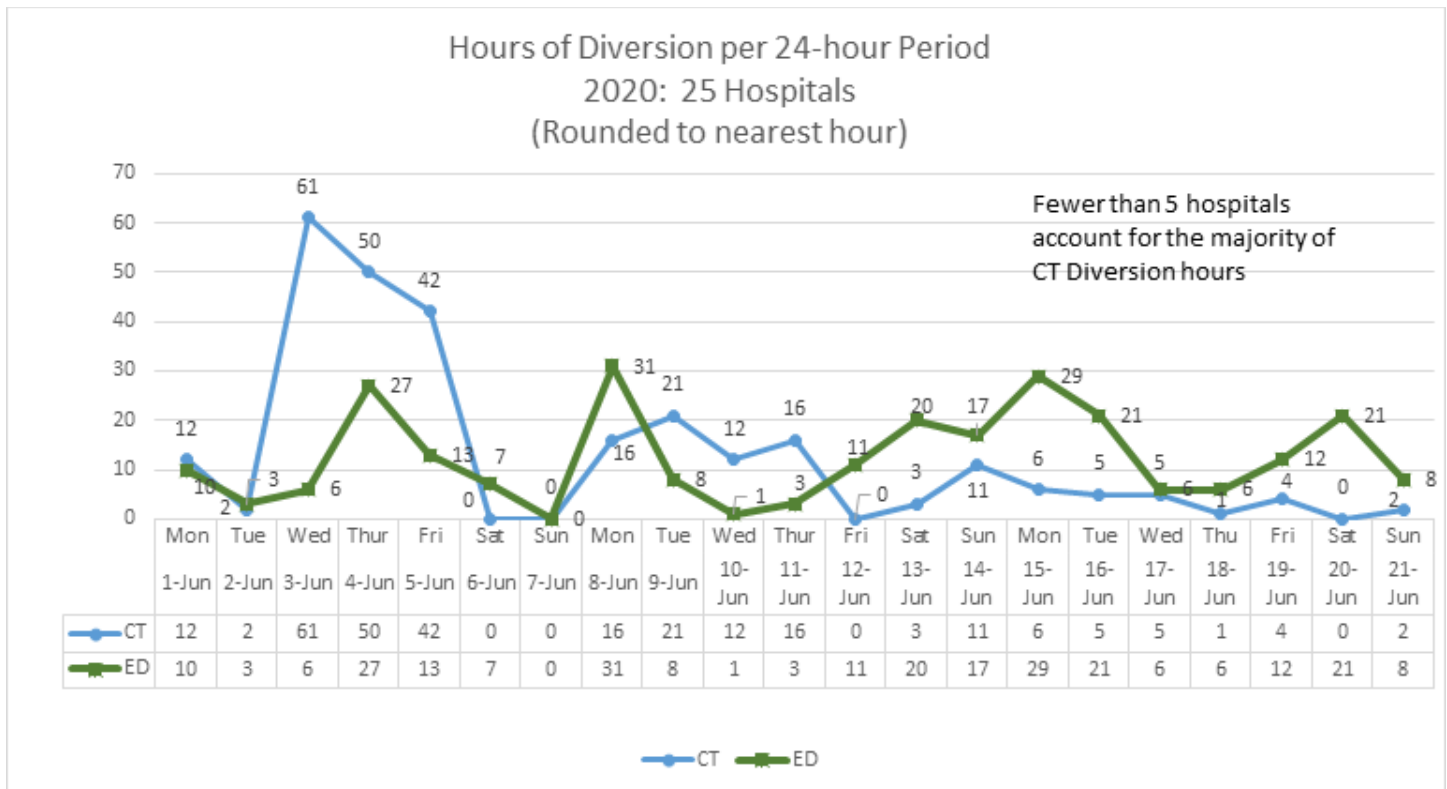


**Orange County Emergency Medical Services
Medical Health Operational Area Coordination (MHOAC)**

Online at: <http://www.healthdisasteroc.org/ems/archive>

6/22/20

- Emergency Department (ED) Diversion & Computerized Tomography (CT) (ED closed to all ambulance transport due to no ED capacity or no CT available) for 6/1/20 – 6/16/20:



HOSPITAL STATUS (Emergency Receiving Centers plus one)

(26): Anaheim Regional, Anaheim Global, Chapman Global, CHOC, CHOC at Mission, Foothill, Fountain Valley, Garden Grove, Hoag-Irvine, Hoag-Newport Beach, Huntington Beach, Kaiser-Anaheim, Kaiser-Irvine, La Palma, Los Alamitos, Mission-Laguna Beach, Mission-Mission Viejo, Orange Coast Memorial, Orange County Global, Placentia Linda, Saddleback Memorial, Saint Jude, South Coast Global, St. Josephs, UCI, West Anaheim

- As of 6/22/20, there are 5 patients from Imperial County currently hospitalized
- Since 5/31/20, OC Hospitals have accepted 30 COVID+ interfacility transfers from Imperial Count

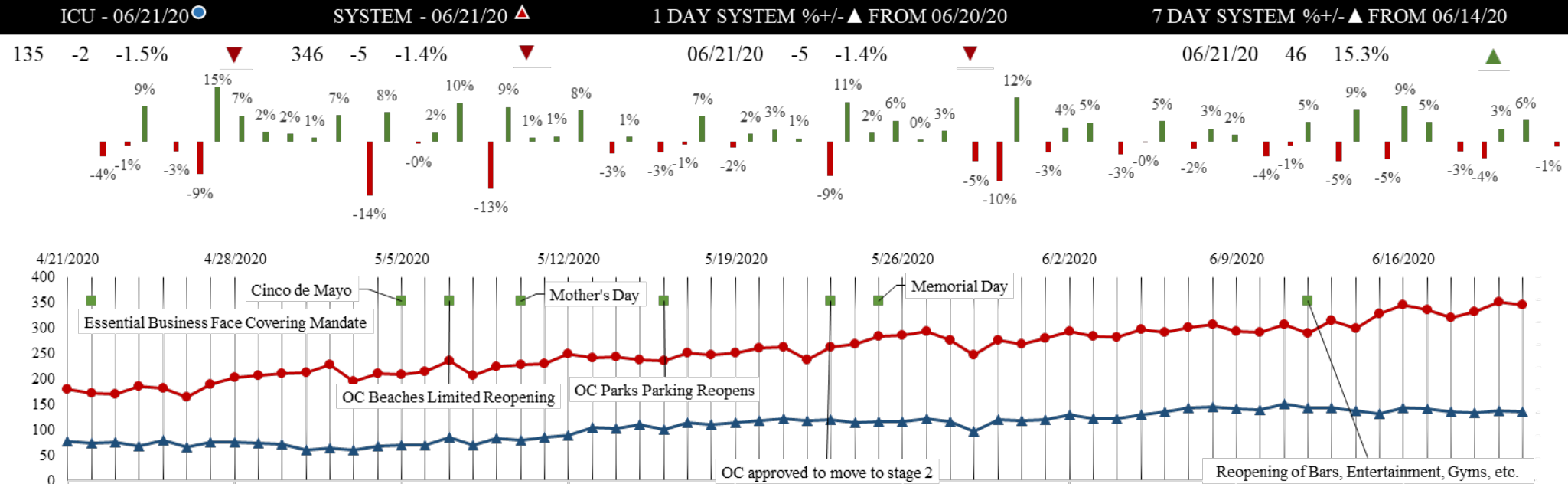
Imperial County Interfacility Decompression – El Centro Regional Medical Center COVID+ Transfers to OC Hospitals 5/31/20 – 6/21/20					
Receiving Facility	4/1/20 – 5/31/20	6/1/20 – 6/7/20	6/8/20 – 6/14/20	6/15/20 – 6/21/20	TOTAL ACCEPTED
Hoag Hospital Newport Beach	9	0	2	1	12
Huntington Beach Hospital	0	0	1	0	1
La Palma Intercommunity Hospital	0	3	2	0	5
Mission Hospital Mission Viejo	1	0	0	0	1
UC Irvine Medical Center	6	2	3	0	11
TOTAL ACCEPTED	16	5	8	1	30

Orange County Emergency Medical Services Medical Health Operational Area Coordination (MHOAC)

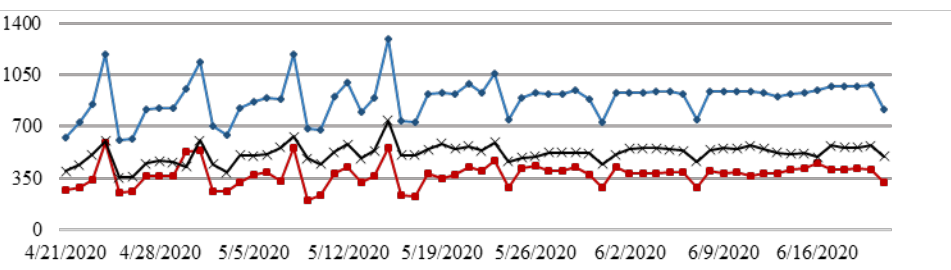
Online at: <http://www.healthdisasteroc.org/ems/archive>

6/22/20

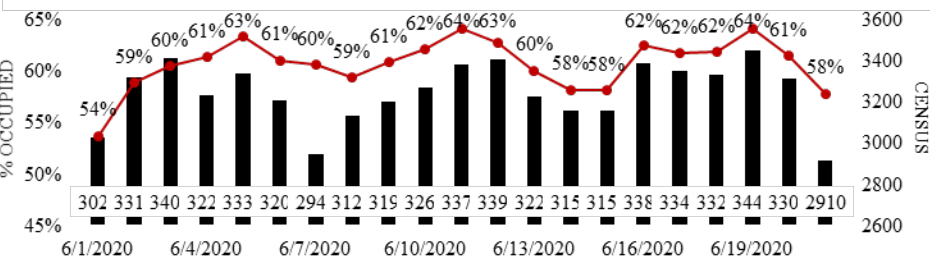
SYSTEM COVID POSITIVE (04/21/20 - 06/21/20) | 25 Emergency Receiving Centers reporting | [State/Snowflake Database]



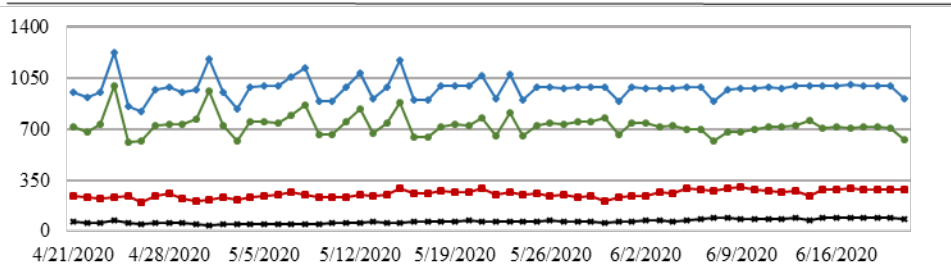
ICU BEDS | SYSTEM - 816 ● | AVAILABLE - 318 ▲ | OCCUPIED - 498 (61.03%) ✖



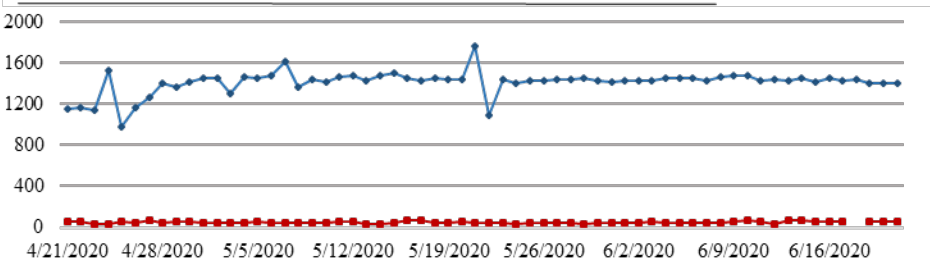
BED OCCUPANCY (06/21/20) | IN-PATIENT BEDS - 2910 (57.70%)



VENTILATORS | SYSTEM - 913 ◆ | AVAILABLE - 632 ● | SYSTEM IN USE - 281 ■ | COVID+ - 82 ✖



SYSTEM SURGE CAPACITY | SYSTEM - 1401 ◆ | OCCUPIED - 58 ■

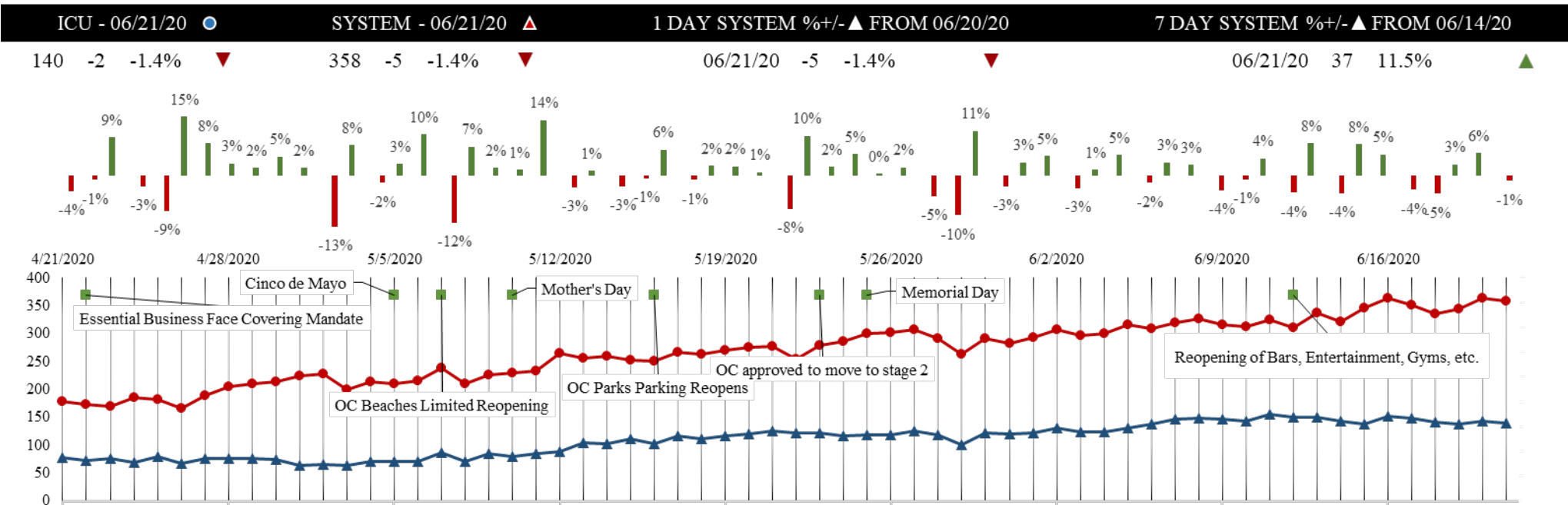


Orange County Emergency Medical Services Medical Health Operational Area Coordination (MHOAC)

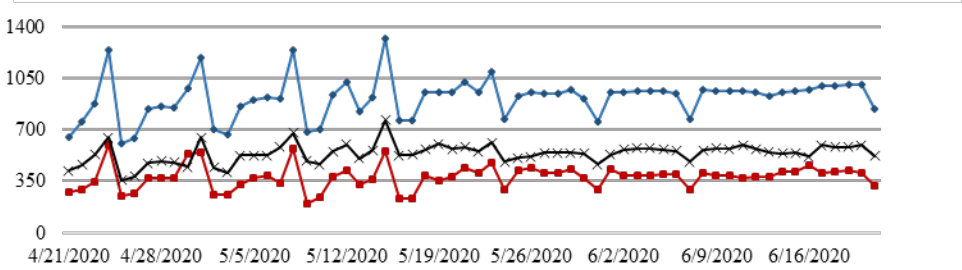
Online at: <http://www.healthdisasteroc.org/ems/archive>

6/22/20

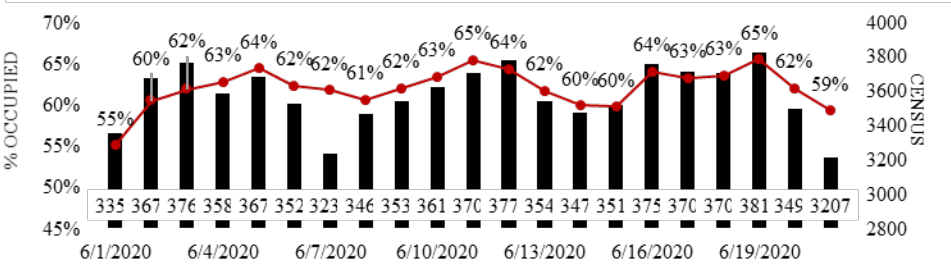
SYSTEM COVID POSITIVE (04/21/20 - 06/21/20) | 30 Acute Care Licensed Facilities reporting | [State/Snowflake Database]



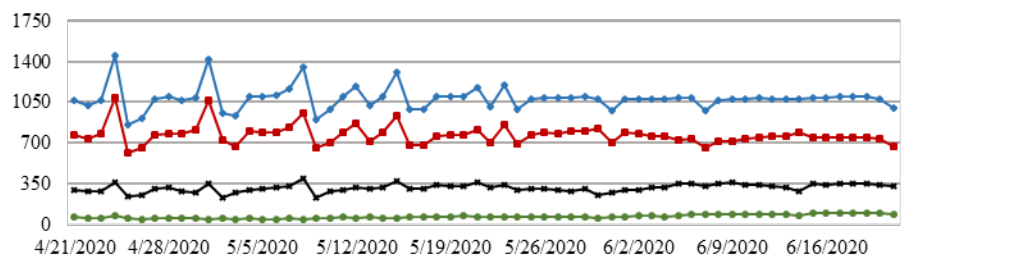
ICU BEDS | SYSTEM - 843 ● | AVAILABLE - 319 ▲ | OCCUPIED - 524 ✖



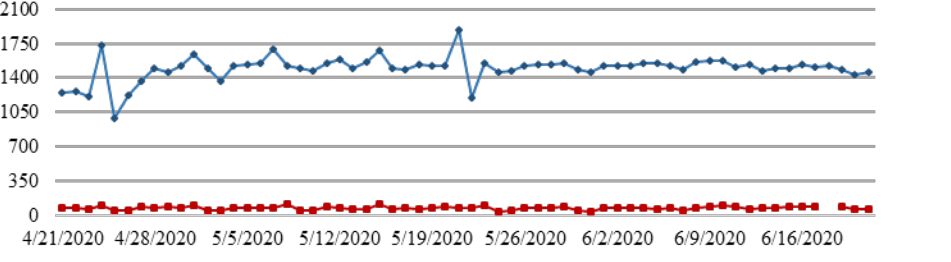
BED OCCUPANCY (06/21/20) | IN-PATIENT BEDS - 3207 (59.27%)



VENTILATORS | SYSTEM - 994 ◆ | AVAILABLE - 664 ● | SYSTEM IN USE - 330 ■ | COVID+ - 86 ✖



SYSTEM SURGE CAPACITY | SYSTEM - 1453 ◆ | OCCUPIED - 58 ■



**Orange County Emergency Medical Services
Medical Health Operational Area Coordination (MHOAC)**

Online at: <http://www.healthdisasteroc.org/ems/archive>

6/22/20

Reporting Date: 6/14/20 (30/33 ACHs reported)	Acute Care Hospital PPE – DAYS ON HAND			
	0 - 3 days	4 - 14 days	15+ days	Non Reported
N95 Masks	0	9	15	6
Surgical Masks	1	8	15	6
Face Shields	2	6	16	6
PAPR Hoods	4	7	8	11
Eye Protection	1	5	18	6
Gowns	1	9	14	6
Gloves	2	11	11	6

- On a routine basis, the MHOAC tracks daily hospitalizations, census, occupancy and PPE availability as well as reviews epidemiologic data (doubling time).
- The criteria in the table below serve as objective measures to identify the need for hospitals to shift to crisis care strategies (i.e. activate surge plans) & uses the following assumptions:
 - Increased pressure in hospitals & on the EMS system requires a shift to crisis care strategies
 - Low levels of PPE will come earlier than decreased capacity and cause an abrupt change in capacity.
 - Increased hospitalizations and low PPE could have a synergistic effect to reduce capacity.
 - Low levels of PPE is not just a marker of capacity but causes capacity issues.

Hospital Criteria for shifting to Crisis Care Strategies			
LEGEND			
CRITERIA	STATUS		
	Normal Operations	Modified Operations Under Control	Modified Operations Assistance Needed
Rate of change in Hospitalized COVID-19 patients (doubling time over last 7 days)	Never to 4 weeks to double	4 weeks to 2 weeks to double	Less than 2 weeks to double
Absolute COVID-19 Census in the hospital	Less than 500	500-750	>750
Hospital census as a percentage of capacity	<80%	80% to 90%	>90%
Supply of PPE available in the hospitals	>4 weeks	2 to 4 weeks	< 2 weeks

Hospital Criteria for shifting to Crisis Care Strategies			
6/15/20			
CRITERIA	STATUS		
	Normal Operations	Modified Operations Under Control	Modified Operations Assistance Needed
Rate of change in Hospitalized COVID-19 patients (doubling time over last 7 days)	35.1 days		
Absolute COVID-19 Census in the hospital	306		
Hospital census as a percentage of capacity	58%		
Supply of PPE available in the hospitals		2 to 4 weeks	

**Orange County Emergency Medical Services
Medical Health Operational Area Coordination (MHOAC)**

Online at: <http://www.healthdisasteroc.org/ems/archive>

6/22/20

AGENCY OPERATIONS CENTER / LOGISTICS SECTION

- AOC Activated at Level II; Hours of Operation Mon & Thurs 0900-1600; Warehouse Ops M-F 0900-1600
- SCARCE Resources: N95, Gloves, Testing Kits, Wipes
- DEPLETED Resources: Gowns

Total Activity		
INQUIRIES	RR RECEIVED	RR FILLED
12,905	6,378	4,663 (73%)

Logistics Daily Units Distributed 6-18-20	
N95 Mask	1,500
Surgical Mask	0
Gown	5,750
Gloves	62,000
Eye Protection	1,000
Hand Sanitizer	300
Other	75
Total Units	70,625

Inventory Report February 18 to June 18, 2020	
Medical Supply/Equipment Total Units Distributed	
N95 Mask	1,887,875
Surgical Mask	742,411
Gowns	556,578
PPE-Suit	12,312
Gloves	427,250
Eye Protection	124,063
Hand Sanitizer	201,847
Other Items	133,638
Total Units	4,085,974

ALTERNATE CARE SITE

Fairview (COVID-19 +)		
Patient Census (as of 6/22/2020 07:30)	CURRENT	TOTAL
Orange County	0	15
LA County	1	13
Ventura County	0	1
Total patients CENSUS / TOTAL ACCEPTED	1	29
Patients Discharged		TOTAL
AMA		0
DISCHARGED		28
EXPIRED		0
TRANSFERRED		0