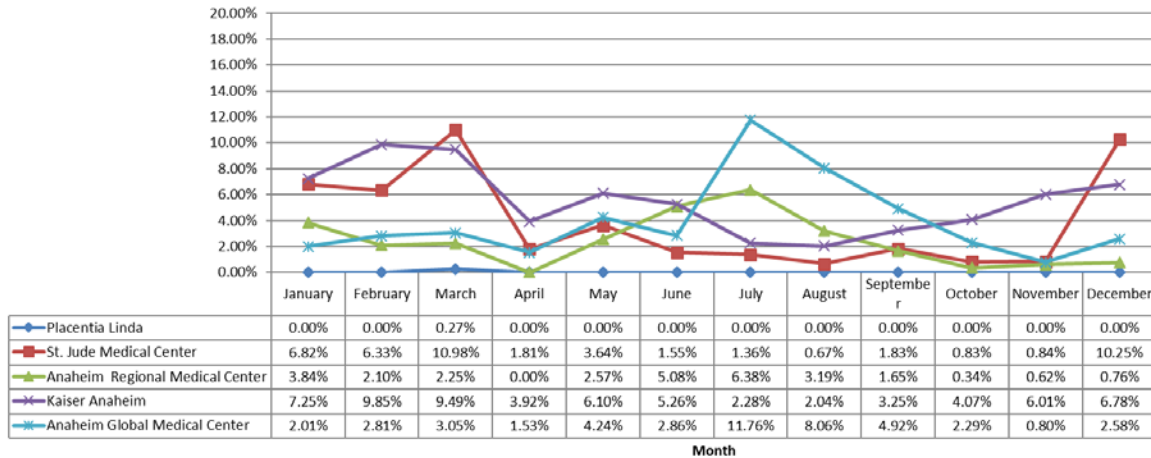




**Orange County
Emergency Medical Services
Diversion Report
January 1 to December 31, 2019**

Emergency Receiving Center Diversion- Percent of Time

North Area- 2019 - ERC Diversion



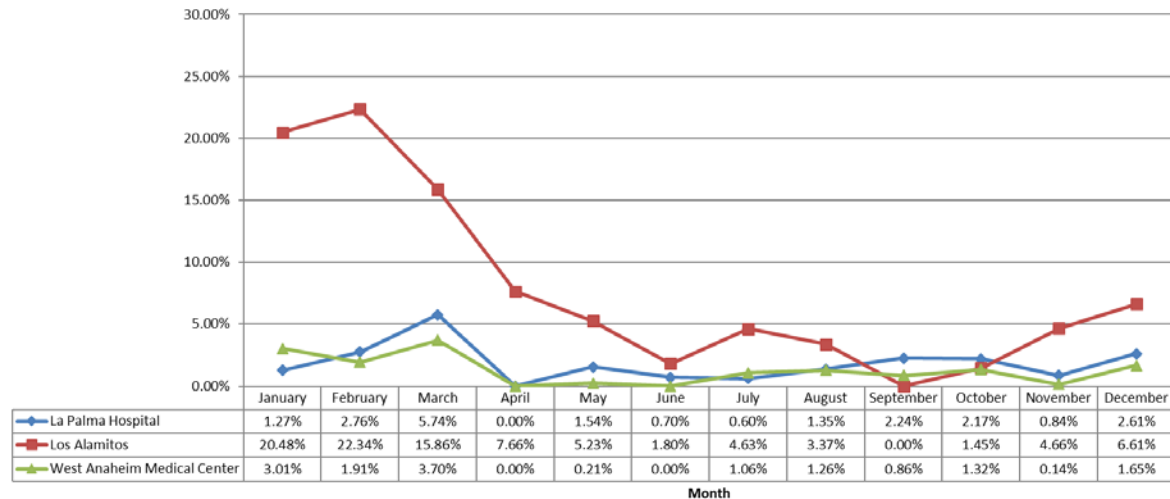
North Area Includes:

- Placentia Linda Hospital
- St. Jude Medical Center
- Anaheim Regional Medical Center
- Kaiser Anaheim
- Anaheim Global Medical Center

West Area Includes:

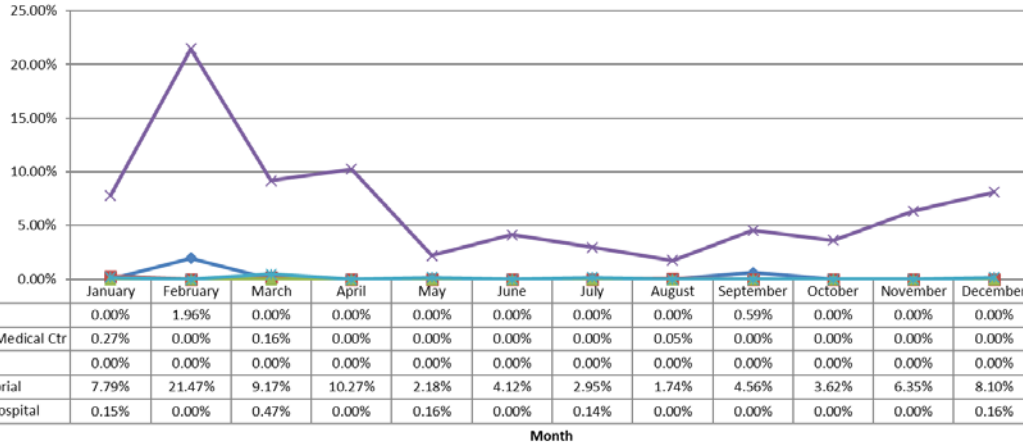
- La Palma Hospital
- Los Alamitos Medical Center
- West Anaheim Medical Center

West Area - 2019 - ERC Diversion



Emergency Receiving Center Diversion- Percent of Time

Coastal Area- 2019 - ERC Diversion



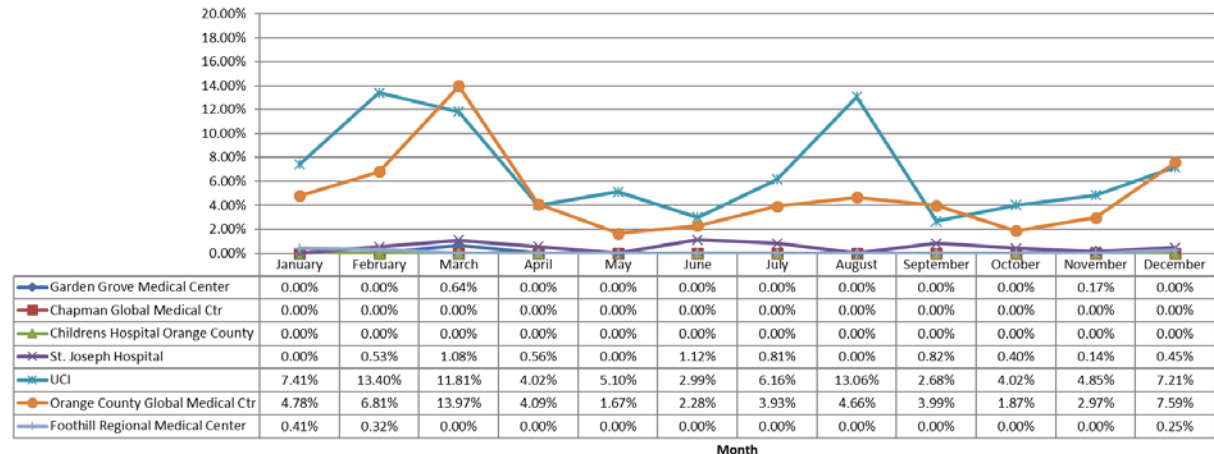
Coastal Area Includes:

- Hoag Hospital Newport Beach
- South Coastal Global Medical Center
- Fountain Valley Hospital
- Orange Coast Memorial Medical Center
- Huntington Beach Hospital

Central Area Includes:

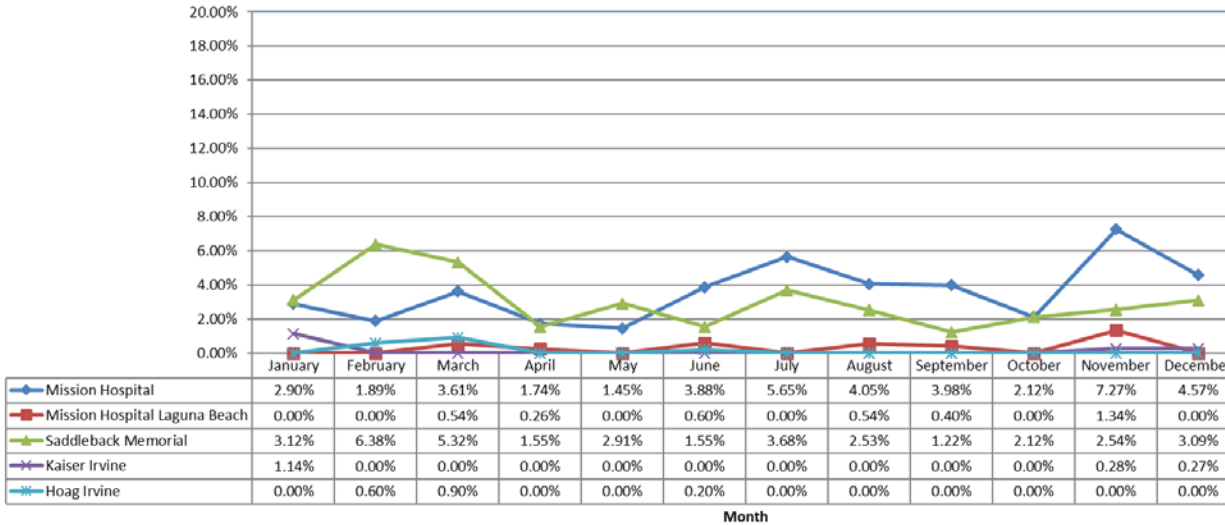
- Garden Grove Medical Center
- Chapman Global Medical Center
- Children's Hospital Orange County
- St. Joseph Hospital
- UCI
- Orange County Global Medical Center
- Foothill Regional Medical Center

Central Area- 2019 - ERC Diversion



Emergency Receiving Center Diversion- Percent of Time

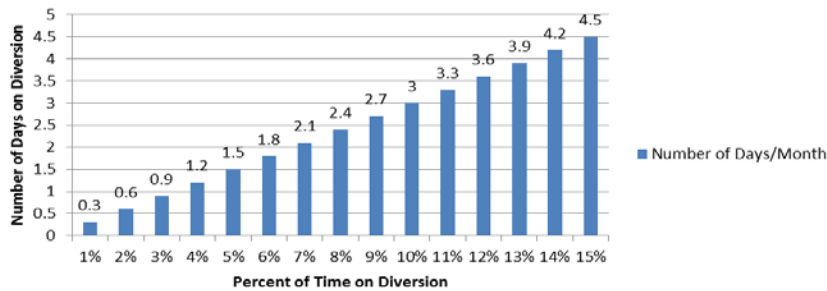
South Area- 2019 - ERC Diversion



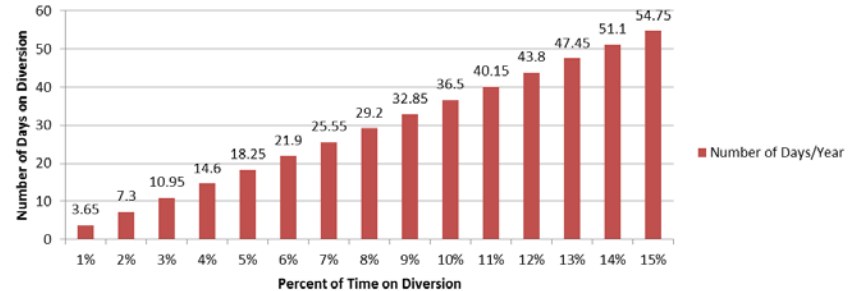
South Area Includes:

- Mission Hospital – Mission Viejo
- Mission Hospital – Laguna Beach
- Saddleback Memorial Medical Center
- Laguna Hills
- Kaiser Hospital – Irvine
- Hoag Hospital - Irvine

Number of Days/Month on Diversion



Number of Days/Year on Diversion



The two charts above demonstrate the monthly and annual impact of diversion represented as a total number of days an ERC would not receive patients given the percent of time of diversion.

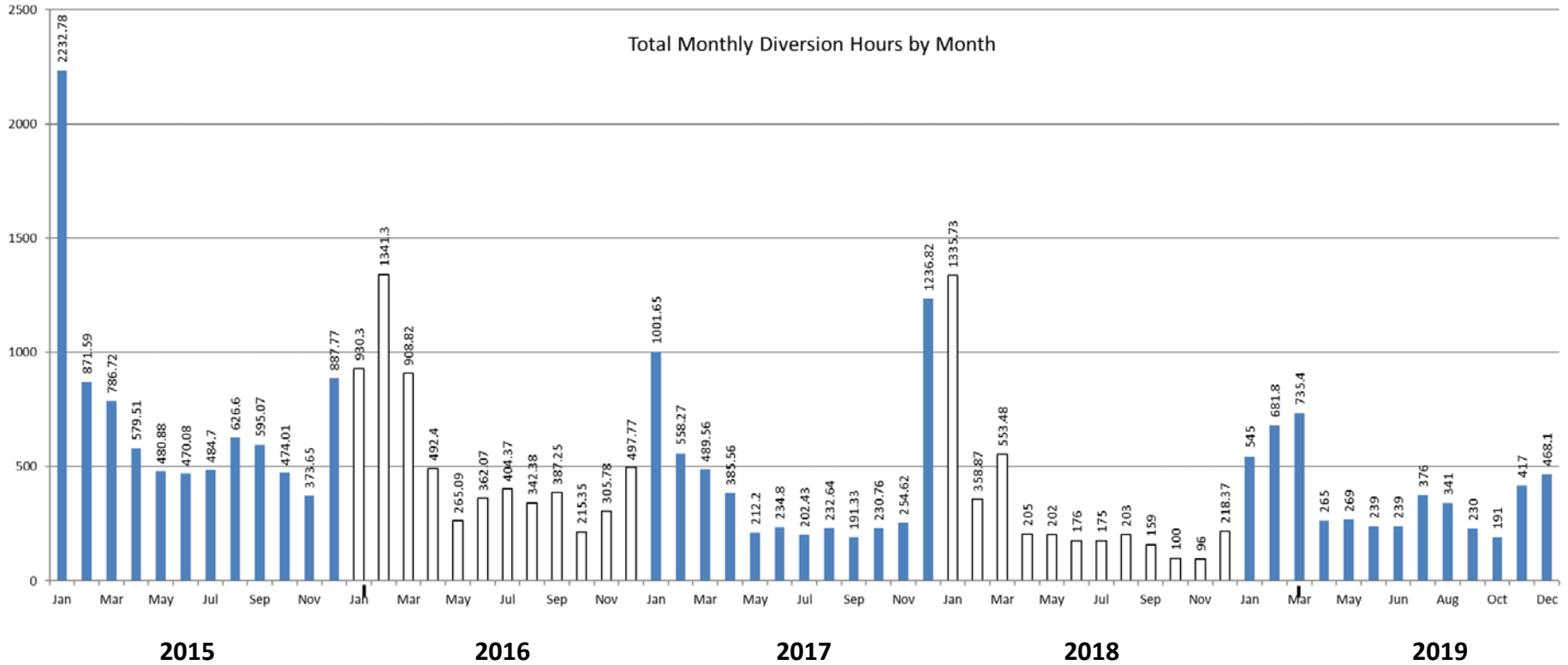
Note: Number of days/month based on 30 days in a month

Emergency Receiving Center Diversion- Total Hours

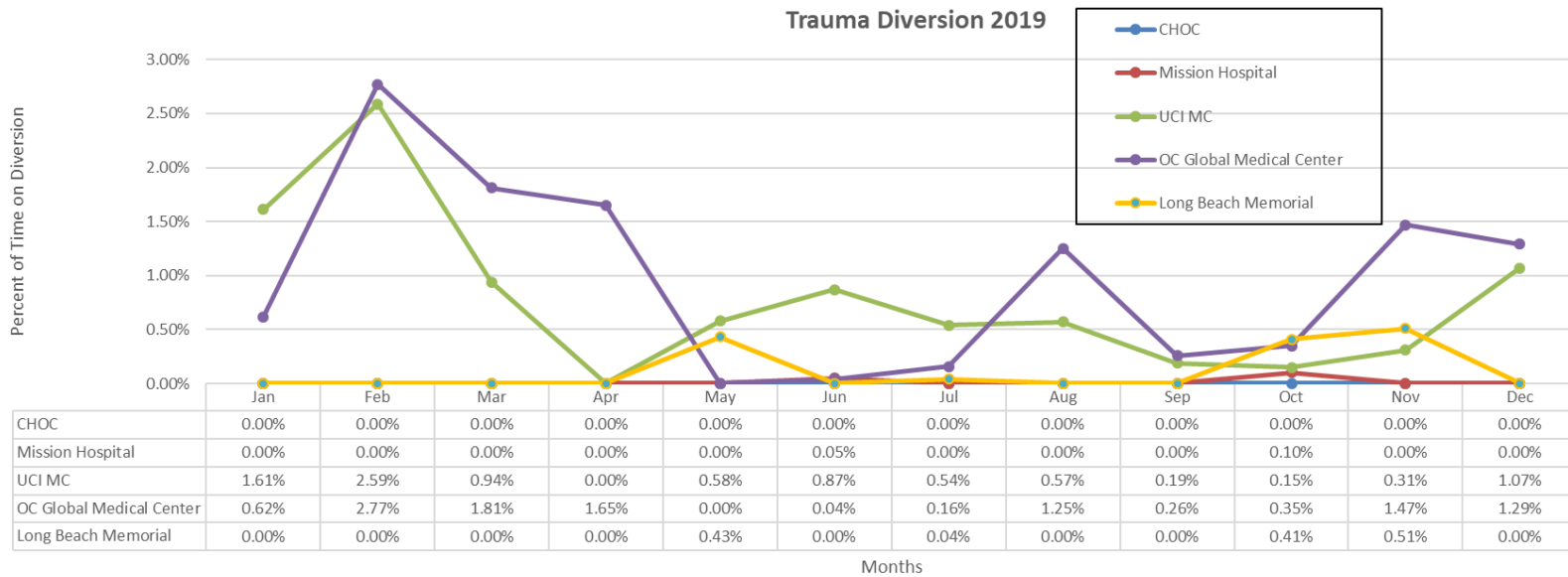
Emergency Receiving Center Diversion Hours 2019												
	Jan	Feb	Mar	Apr	May	Jun	Jul	Aug	Sept	Oct	Nov	Dec
Anaheim Global Medical Ctr	14.00	18.00	22.00	11.00	31.00	20.00	87.00	60.00	35.00	17.00	5.00	19.00
Anaheim Regional Med Ctr	28.00	14.00	16.00	0.00	19.00	36.00	47.00	23.00	11.00	2.00	4.00	5.00
Chapman Global Medical Ctr	0.00	0.00	0.00	0.00	0.00	0.00	0.00	0.00	0.00	0.00	136.00	0.00
CHOC	0.00	0.00	0.00	0.00	0.00	0.00	0.00	0.00	0.00	0.00	0.00	0.00
Foothill Regional Medical Ctr	3.00	2.00	0.00	0.00	0.00	0.00	0.00	0.00	0.00	0.00	0.00	1.00
Fountain Valley	0.00	0.00	0.00	0.00	0.00	0.00	0.00	0.00	0.00	0.00	0.00	0.00
Garden Grove Hospital	0.00	0.00	4.00	0.00	0.00	0.00	0.00	0.00	0.00	0.00	1.00	0.00
Hoag Hospital Irvine	0.00	4.00	6.00	0.00	0.00	1.00	0.00	0.00	0.00	0.00	0.00	0.00
Hoag Newport	0.00	13.00	0.00	0.00	0.00	0.00	0.00	0.00	4.00	0.00	0.00	0.00
Huntington Beach	1.00	0.00	3.00	0.00	1.00	0.00	1.00	0.00	0.00	0.00	0.00	1.00
Kaiser Anaheim	53.00	66.00	70.00	28.00	45.00	37.00	16.00	15.00	23.00	30.00	43.00	50.00
Kaiser Irvine	8.00	0	0.00	0.00	0.00	0.00	0.00	0.00	0.00	0.00	2.00	2.00
La Palma Intercommunity	9.00	18.00	42.00	0.00	11.00	5.00	4.00	10.00	16.00	16.00	6.00	19.00
Los Alamitos	152.00	150.00	117.00	55.00	38.00	12.00	34.00	25.00	0.00	10.00	33.00	49.00
Mission Hospital Laguna	0.00	0.00	4.00	1.00	0.00	4.00	0.00	4.00	2.00	0.00	9.00	0.00
Mission Hospital Mission	21.00	12.00	26.00	12.00	10.00	27.00	42.00	30.00	28.00	15.00	52.00	34.00
Orange Coast Memorial	57.00	144.00	68.00	73.00	16.00	29.00	21.00	12.00	32.00	26.00	45.00	60.00
Orange County Global Med	35.00	45.00	103.00	29.00	12.00	16.00	29.00	34.00	28.00	13.00	21.00	56.00
Placentia Linda Hospital	0.00	0.00	2.00	0.00	0.00	0.00	0.00	0.00	0.00	0.00	0.00	0.00
Saddleback Memorial	23.00	42.00	39.00	11.00	21.00	11.00	27.00	18.00	8.00	15.00	18.00	22.00
South Coast Global	2.00	0.00	0.00	0.00	0.00	0.00	0.00	0.50	0.00	0.00	0.00	0.00
St Joseph	0.00	3.00	8.00	4.00	0.00	8.00	6.00	0.00	5.00	3.00	1.00	3.00
St. Jude Medical Ctr	50.00	42.00	81.00	13.00	27.00	11.00	10.00	4.00	13.00	6.00	6.00	76.00
UCI	55.00	90.00	87.00	28.00	37.00	21.00	45.00	97.00	19.00	29.00	34.00	53.00
West Anaheim Medical Ctr	22.00	12.00	27.00	0.00	1.00	1.00	7.00	9.00	6.00	9.00	1.00	12.00
Total	533.00	675.00	725.00	265.00	269.00	239.00	376.00	341.50	230.00	191.00	417.00	462.00



Emergency Receiving Center Diversion 2015 - 2019



Trauma Receiving Center Diversion- Percent of Time



Cardiovascular Receiving Center Diversion- Percent of Time

CVRC 2019

	Jan	Feb	Mar	Apr	May	Jun	Jul	Aug	Sept	Oct	Nov	Dec
Anaheim Global Medical Ctr	0.23%	1.15%	0.00%	0.00%	0.00%	3.99%	0.0%	13.8%	0.2%	0.0%	0.0%	1.4%
Anaheim Regional Medical Ctr	0.00%	0.00%	0.00%	0.00%	0.00%	0.00%	0.0%	0.0%	0.0%	0.0%	0.0%	0.0%
Fountain Valley	0.00%	0.05%	0.00%	0.00%	0.00%	0.00%	0.0%	0.0%	0.0%	0.0%	0.0%	0.0%
Hoag Hospital Irvine	0.00%	0.00%	0.00%	0.00%	0.00%	0.00%	0.0%	0.0%	0.0%	0.0%	0.0%	0.0%
Hoag Hospital Newport	0.00%	0.00%	0.00%	0.00%	0.00%	0.00%	0.0%	0.0%	0.0%	0.0%	0.0%	0.0%
Los Alamitos	9.87%	9.12%	2.42%	1.86%	0.00%	0.00%	1.3%	0.0%	0.0%	0.0%	0.0%	0.8%
Orange Coast Memorial Med	0.00%	1.26%	0.00%	0.25%	0.42%	0.00%	1.5%	0.0%	0.2%	0.0%	0.0%	0.5%
Orange County Global Med	1.32%	0.71%	4.53%	1.34%	2.53%	0.58%	0.9%	0.1%	0.4%	0.3%	1.0%	0.4%
Mission Hospital	0.00%	0.00%	0.00%	0.00%	0.00%	0.00%	0.0%	0.0%	0.0%	0.0%	0.0%	0.4%
Saddleback Memorial	0.00%	0.00%	0.00%	0.00%	0.00%	0.00%	0.0%	0.0%	0.0%	0.0%	0.0%	0.0%
St Joseph	0.00%	0.00%	0.00%	0.00%	0.00%	0.53%	0.0%	0.0%	0.0%	0.3%	0.5%	0.0%
St Jude	0.00%	0.34%	0.00%	0.00%	0.00%	0.00%	0.0%	0.0%	0.0%	0.0%	0.0%	0.0%
UCI	0.00%	0.00%	0.00%	0.00%	0.00%	0.00%	0.0%	0.0%	0.0%	0.0%	0.0%	0.0%
West Anaheim Medical Ctr	2.63%	0.55%	2.70%	0.40%	#VALUE!	#VALUE!	#VALUE!	#VALUE!	0.1%	1.1%	0.5%	1.6%

Highlighted in Red =Diversion Any Amount



Internal Disruption Diversion- Percent of Time

Internal Disruption 2019												
	Jan	Feb	Mar	Apr	May	Jun	Jul	Aug	Sept	Oct	Nov	Dec
Anaheim Global Medical Ctr	0.00%	0.00%	0.00%	0.00%	0.00%	0.00%	0.00%	0.00%	0.00%	0.00%	0.00%	0.04%
Anaheim Regional Med Ctr	0.00%	2.03%	0.93%	1.15%	3.23%	0.41%	0.00%	0.37%	0.00%	0.00%	0.00%	0.08%
Chapman Global Medical Ctr	0.00%	0.00%	0.00%	0.00%	0.00%	0.04%	0.00%	1.07%	0.00%	0.00%	0.00%	0.00%
CHOC	0.00%	0.00%	0.00%	0.00%	0.00%	0.00%	0.00%	0.00%	0.00%	0.00%	0.00%	0.00%
Foothill Regional Medical Ctr	0.00%	0.00%	0.00%	0.00%	0.00%	0.00%	0.00%	0.00%	0.00%	0.00%	0.00%	0.08%
Fountain Valley	0.00%	0.00%	0.00%	0.00%	0.00%	0.00%	0.00%	8.97%	0.00%	0.00%	0.00%	0.00%
Garden Grove Hospital	0.00%	0.00%	0.00%	0.00%	0.00%	0.00%	0.00%	0.00%	0.00%	0.00%	0.00%	0.00%
Hoag Hospital Irvine	0.00%	0.00%	0.00%	0.03%	0.00%	0.11%	0.10%	0.00%	0.00%	0.00%	0.00%	0.02%
Hoag Newport	0.00%	0.00%	0.00%	0.00%	0.00%	0.00%	0.00%	0.00%	0.00%	0.00%	0.00%	0.00%
Huntington Beach	0.00%	0.00%	0.00%	0.00%	0.00%	0.00%	0.00%	0.00%	0.00%	0.00%	0.00%	0.00%
Kaiser Anaheim	0.00%	0.00%	0.00%	0.00%	0.00%	0.00%	0.00%	0.00%	0.00%	0.00%	0.00%	0.00%
Kaiser Irvine	0.00%	0.00%	0.00%	0.00%	0.00%	0.00%	0.00%	0.00%	0.00%	0.00%	0.00%	0.00%
La Palma Intercommunity	0.00%	0.00%	0.00%	0.00%	0.00%	0.00%	0.00%	0.00%	0.00%	0.00%	0.00%	0.00%
Los Alamitos	0.00%	0.00%	0.00%	0.00%	0.00%	0.00%	0.00%	0.00%	0.00%	0.00%	0.00%	0.00%
Mission Hospital Laguna	0.00%	0.00%	0.00%	0.00%	0.00%	0.00%	0.02%	0.00%	0.12%	0.00%	0.00%	0.00%
Mission Hospital Mission	0.00%	0.00%	0.00%	0.00%	0.00%	0.00%	0.00%	0.00%	0.22%	0.00%	0.00%	0.05%
Orange Coast Memorial	0.00%	0.00%	0.00%	0.93%	0.00%	0.47%	0.00%	0.59%	0.00%	0.00%	0.00%	0.00%
Orange County Global Med	0.02%	0.00%	0.00%	0.00%	0.11%	0.00%	0.01%	0.00%	0.72%	0.00%	0.00%	0.00%
Placentia Linda Hospital	0.00%	0.00%	0.00%	0.00%	0.00%	0.00%	0.00%	0.00%	0.00%	0.00%	0.00%	0.00%
Saddleback Memorial	0.00%	0.00%	0.00%	0.00%	0.00%	0.00%	0.05%	0.03%	0.00%	0.07%	0.00%	0.00%
South Coast Global	0.00%	0.00%	0.00%	0.00%	0.00%	0.00%	0.00%	0.00%	0.07%	0.00%	0.00%	0.49%
St Joseph	0.00%	0.00%	0.00%	0.00%	0.00%	0.00%	0.00%	0.00%	0.00%	0.50%	0.00%	0.00%
St. Jude Medical Ctr	0.00%	0.00%	0.00%	0.00%	0.00%	0.33%	0.00%	0.00%	0.00%	0.17%	0.00%	0.00%
UCI	0.00%	0.00%	0.00%	0.00%	0.00%	0.00%	1.07%	0.00%	0.00%	0.00%	0.00%	0.00%
West Anaheim Medical Ctr	0.00%	0.00%	0.63%	0.00%	0.00%	0.00%	0.00%	0.00%	0.00%	0.00%	0.00%	0.00%



Highlighted in Red =Diversion Any Amount

CT Diversion Report- Percent of Time

CT Diversion 2019												
	Jan	Feb	Mar	Apr	May	Jun	Jul	Aug	Sept	Oct	Nov	Dec
Anaheim Global Medical Ctr	0.00%	0.00%	0.00%	0.00%	0.00%	0.49%	0.00%	0.09%	0.31%	0.00%	0.30%	0.00%
Anaheim Regional Med Ctr	1.83%	0.00%	0.50%	0.48%	2.46%	1.09%	0.70%	1.80%	0.56%	1.34%	0.57%	4.45%
Chapman Global Medical Ctr	0.85%	0.37%	0.00%	0.00%	0.00%	0.00%	8.30%	0.00%	1.97%	2.56%	0.47%	1.48%
CHOC	0.00%	0.00%	0.00%	0.00%	0.00%	0.00%	0.00%	0.00%	0.00%	0.00%	0.00%	0.00%
Foothill Regional Medical Ctr	0.00%	0.00%	0.00%	0.00%	0.02%	0.00%	0.00%	0.00%	0.00%	0.00%	0.00%	0.00%
Fountain Valley	0.00%	0.00%	0.00%	0.00%	0.00%	0.00%	0.00%	0.00%	0.00%	0.00%	0.00%	0.00%
Garden Grove Hospital	0.00%	0.31%	6.57%	2.15%	0.53%	0.00%	0.00%	0.49%	0.00%	0.00%	0.40%	0.00%
Hoag Hospital Irvine	0.00%	0.00%	0.00%	0.00%	0.00%	0.00%	0.00%	0.00%	0.00%	0.08%	0.00%	0.00%
Hoag Newport	0.00%	0.00%	0.06%	0.00%	0.00%	0.00%	0.00%	0.00%	0.00%	0.04%	0.00%	0.00%
Huntington Beach	9.31%	0.32%	0.41%	1.06%	3.29%	0.00%	0.00%	0.00%	0.00%	0.00%	0.00%	0.00%
Kaiser Anaheim	0.00%	0.00%	0.47%	0.16%	0.00%	0.00%	0.38%	0.00%	0.24%	1.12%	0.00%	0.00%
Kaiser Irvine	0.00%	0.00%	0.00%	0.00%	0.00%	0.00%	0.00%	0.00%	0.00%	0.00%	0.00%	0.00%
La Palma Intercommunity	0.00%	0.00%	0.67%	0.49%	0.00%	0.86%	0.00%	0.00%	1.46%	0.00%	0.00%	0.00%
Los Alamitos	13.63%	9.03%	2.42%	0.85%	0.00%	0.00%	1.98%	0.00%	0.00%	0.00%	0.00%	0.52%
Mission Hospital Laguna	0.00%	0.15%	0.00%	0.00%	0.00%	0.55%	0.00%	0.00%	0.00%	0.18%	0.00%	0.22%
Mission Hospital Mission	0.00%	0.00%	0.00%	0.00%	0.00%	0.00%	0.00%	0.00%	0.00%	0.00%	0.00%	0.00%
Orange Coast Memorial	0.00%	0.00%	0.00%	0.50%	0.00%	0.05%	0.00%	0.00%	0.00%	0.00%	0.00%	0.00%
Orange County Global Med	0.04%	1.92%	0.64%	0.79%	0.00%	0.01%	0.00%	0.00%	0.01%	0.19%	0.00%	0.09%
Placentia Linda Hospital	0.00%	0.00%	0.00%	0.00%	0.00%	0.04%	0.00%	0.00%	0.00%	0.00%	0.00%	0.00%
Saddleback Memorial	0.00%	0.00%	0.37%	0.63%	0.04%	0.00%	0.15%	0.00%	0.00%	0.05%	0.00%	0.00%
South Coast Global	0.00%	1.71%	0.00%	0.00%	3.58%	2.17%	1.70%	0.91%	3.03%	0.00%	2.96%	1.01%
St Joseph	0.00%	0.00%	0.00%	0.00%	0.00%	0.00%	0.00%	0.00%	0.00%	0.00%	0.00%	0.00%
St. Jude Medical Ctr	0.00%	0.00%	0.00%	0.00%	0.00%	0.01%	0.00%	0.00%	0.00%	0.00%	0.00%	0.00%
UCI	0.00%	0.00%	0.00%	0.00%	0.00%	0.00%	0.00%	0.00%	0.00%	0.00%	0.00%	0.00%
West Anaheim Medical Ctr	0.00%	0.00%	0.00%	0.00%	0.00%	0.00%	0.17%	0.00%	0.00%	0.08%	0.00%	0.00%



Highlighted in Red = Diversion Any Amount