

Orange County Emergency Medical Services
Medical Health Operational Area Coordination (MHOAC)
 Online at: <http://www.healthdisasteroc.org/ems/archive>
07/07/20

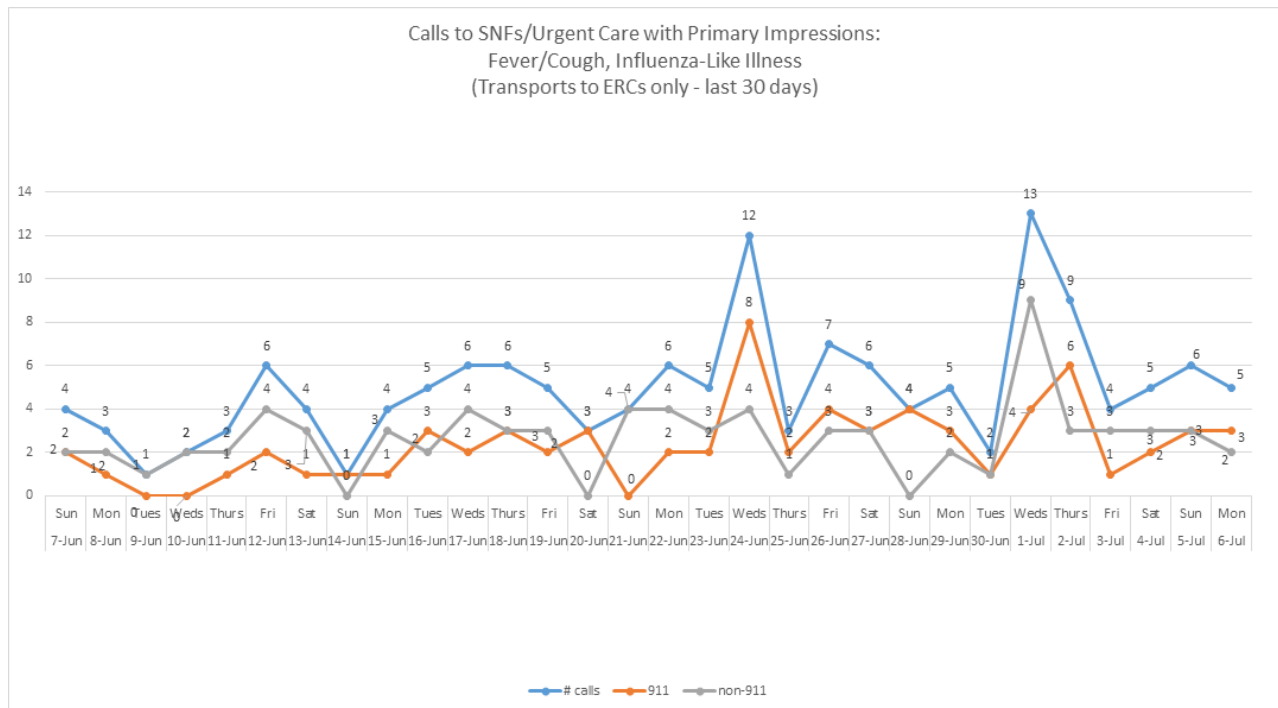
OVERVIEW OF CURRENT SITUATION (07/07/20 0730) Source: Johns Hopkins University & Medicine <https://coronavirus.jhu.edu/map.html>

Cases / Deaths
 Worldwide: 11,653,442 / 538,933
 Nationwide: 2,939,540 / 130,312
 California: 273,662 / 6,460
 Orange County: 18,892 / 369 Source: [Orange County COVID-19 Case Counts & Testing Figures](#)

ORANGE COUNTY PUBLIC HEALTH (as of 7/7/20 1100)

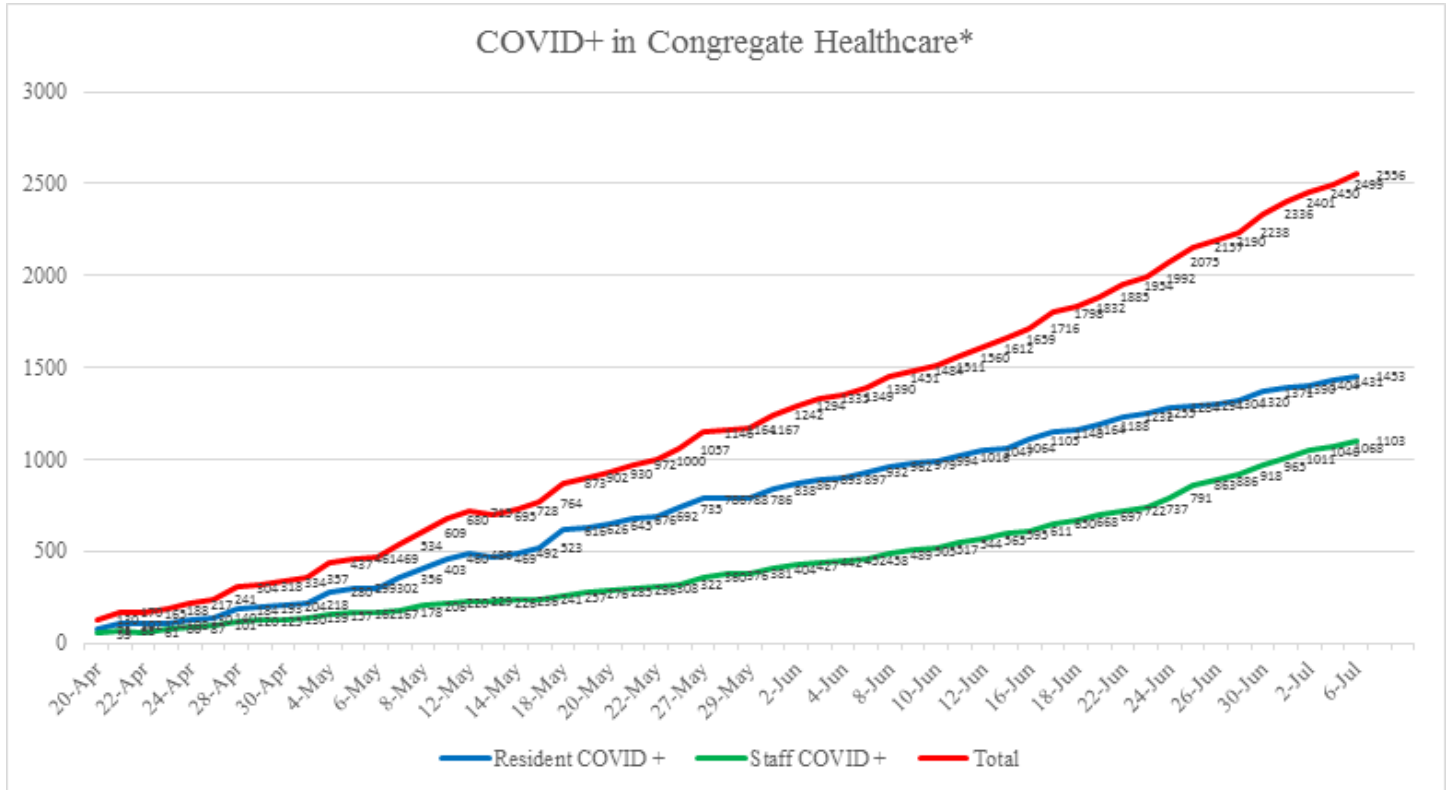
Orange County COVID-19 Summary* click for full details	Sat 7/4/20	Sun 7/5/20	Mon 7/6/20	Tue 7/7/20	Wed 7/8/20	Thu 7/9/20	Fri 7/10/20
Cases Reported to Date	16,191	16,854	17,882	18,892			
Deaths Reported to Date	363	366	366	369			
Tests Reported Today	6,862	5,649	4,157	8,037			
Cumulative Tests to Date	260,853	266,502	270,659	278,696			
*Data posted is always preliminary & subject to change. More information may become available as individual case investigations are completed. LOCAL DATA MAY BE DIFFERENT FROM THE STATE WEBSITE DATA							

SKILLED NURSING/ASSISTED LIVING/RESIDENTIAL CARE FACILITY – TRENDS



Reporting Date: 7/07/20 (73 SNFs reported)	Skilled Nursing Facility PPE – DAYS ON HAND*			
	0 - 3 days	4 - 7 days	8-14 days	15+ days
N95 Masks	1	3	27	42
Surgical Masks	0	3	22	48
Eye Protection	0	4	22	47
Gowns	0	4	22	47
Gloves	0	4	23	46
Alcohol-Based Hand Sanitizer	0	6	19	48

**Orange County Emergency Medical Services
Medical Health Operational Area Coordination (MHOAC)**
Online at: <http://www.healthdisasteroc.org/ems/archive>
07/07/20



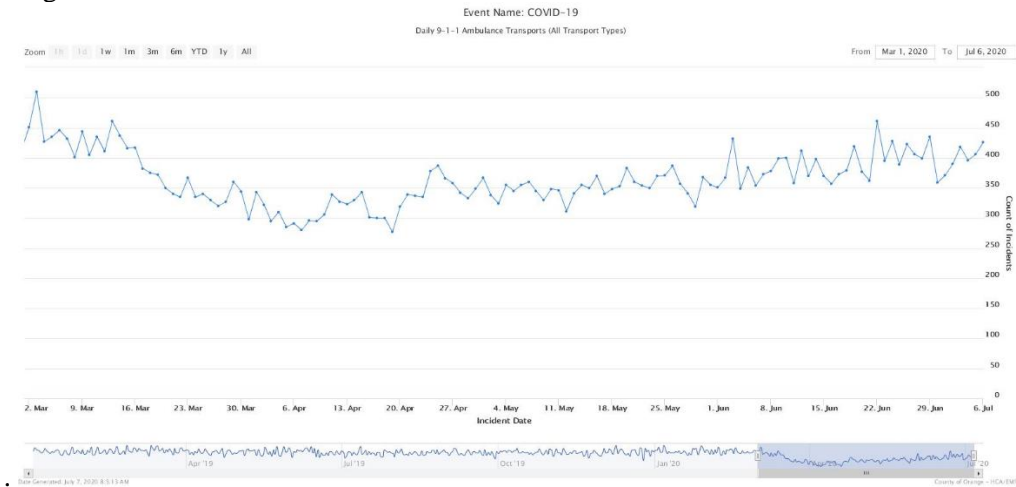
Facility Outbreaks (as of 7/6/20 1700)

Facility Type by Licensing Category	#	An "Outbreak" is two (2) or more confirmed cases of COVID-19 in facility residents occurring within 14 days.
Skilled Nursing Facility	37	Advanced Rehab Center of Tustin, Alamitos West Health & Rehab, Anaheim Crest, Anaheim Healthcare Center, Buena Vista Care Center, Chapman Care Center, Country Villa Plaza, Coventry Court, Crystal Cove Care Center, French Park Care Center, Garden Grove Convalescent Hospital, Garden Park Care Center, Gordon Lane Care Center, Harbor Villa Care Center, Healthcare Center of Orange County, Huntington Valley Healthcare Center, Kindred Brea SAU, Laguna Hills Health & Rehab, Leisure Court Nursing Center, MainPlace Post Acute, Manor Care FV, New Orange Hills, Orange Healthcare & Wellness, Orangecroft Rehab Hospital, Pacific Haven Healthcare Center, Palm Terrace, Park Anaheim Healthcare Center, Rowntree Gardens, Sea Cliff Healthcare Center, Seal Beach Health & Rehab, South Coast Post Acute, St. Edna Subacute & Rehab, Terrace View Care Center, The Hills Post Acute, The Pavilion at Sunny Hills, West Anaheim Extended Care, Windsor Gardens Center of Anaheim, Windsor Gardens Fullerton
Elderly Assisted Living	24	Acacia Villa, ActivCare Yorba Linda, Anaheim Crown Plaza, Brookdale Anaheim, Brookdale Nohl Ranch, Brookdale San Juan Capistrano, Cambridge House, Carmel Village, Golden Leisure Home, Heathers McKinley, Heathers Wintergreen, Heritage Point, Kamstra Care Home, Karlton Residential, Oakmont-Capriana, Seacrest Assisted Living, Silverado Newport Mesa, Silverado Tustin Hacienda, St Francis Home, Sunflower Garden, Sunrise Villa Bradford, The Groves of Tustin, The Regency, Whitten Heights

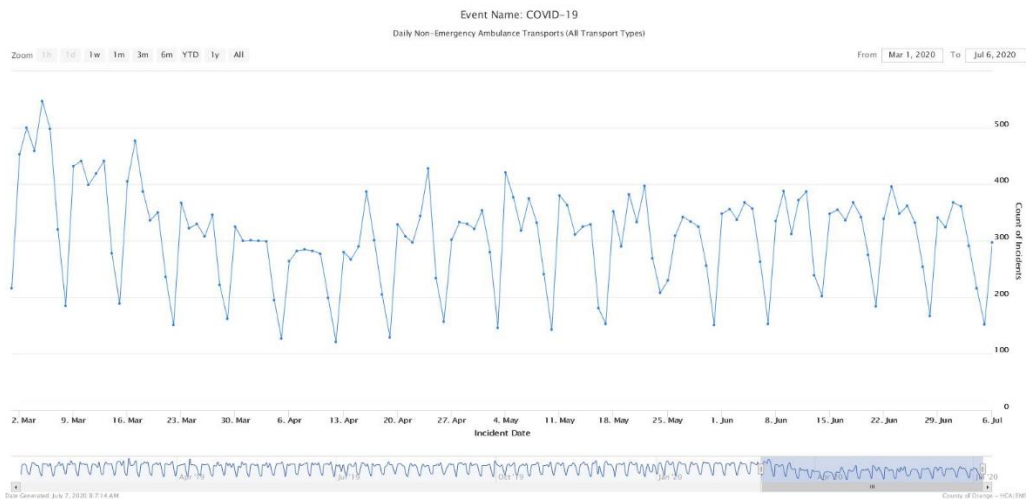
Orange County Emergency Medical Services
Medical Health Operational Area Coordination (MHOAC)
Online at: <http://www.healthdisasteroc.org/ems/archive>
07/07/20

EMERGENCY MEDICAL SERVICES STATUS

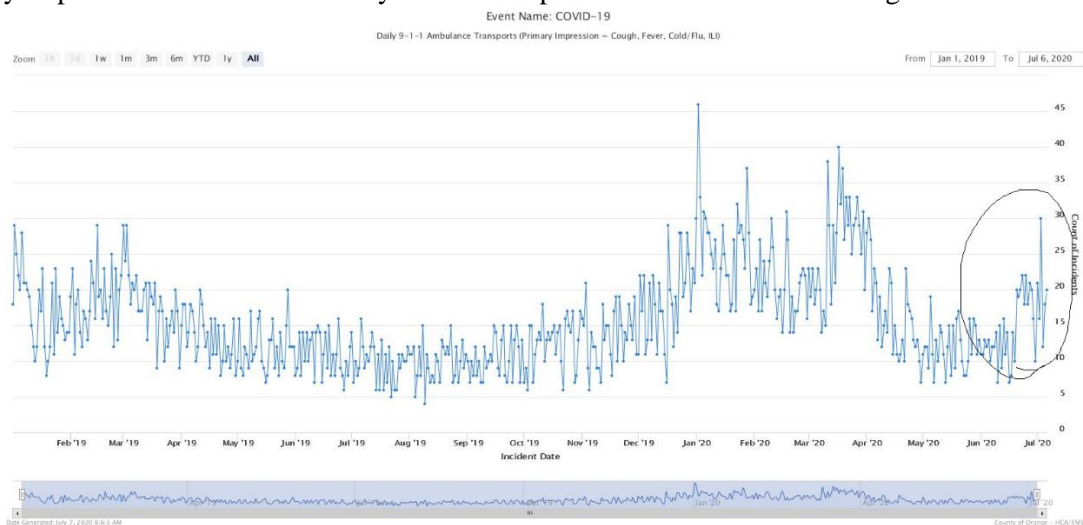
- 9-1-1 ambulance transport volume continued to increase and are approaching normal levels at just 5-10% below normal average.



- 9-1-1 ambulance transport volume continued to increase and are approaching normal levels at just 5-10% below normal average.



- Primary Impressions of Cold/Flu/ILI by 9-1-1 EMS providers continue to trend higher over the last several days.

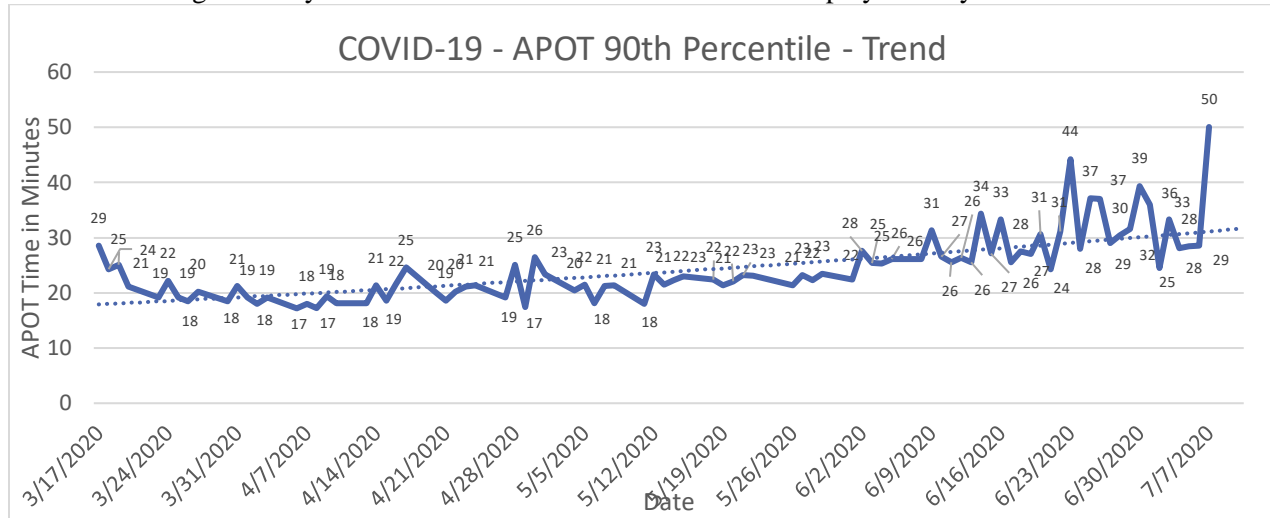


**Orange County Emergency Medical Services
Medical Health Operational Area Coordination (MHOAC)**

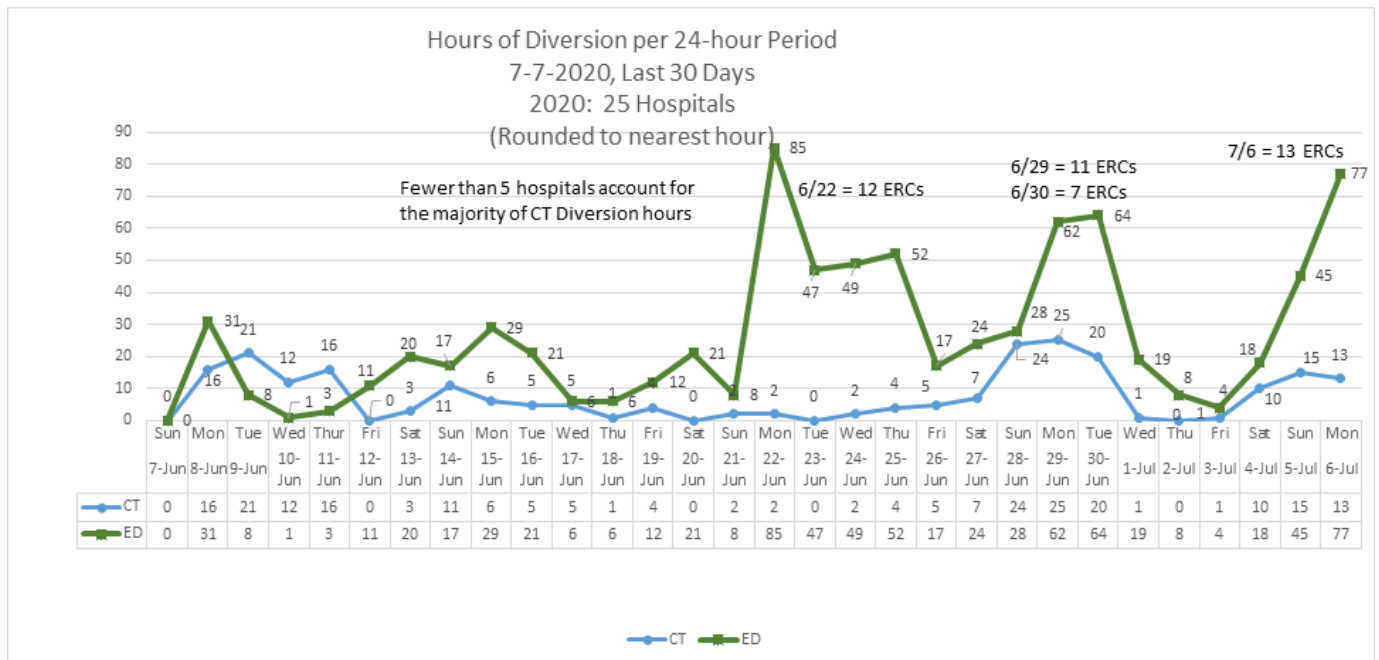
Online at: <http://www.healthdisasteroc.org/ems/archive>

07/07/20

- Ambulance Patient Offload Time (APOT) is defined as the time the ambulance arrives at the receiving destination (wheels stop) to the time that the ambulance crew physically transfers the patient to the ED gurney. Last 24 hours: **Current Average APOT is 23m13s / Current 90th Percentile APOT is 50m05s.**
- APOT increased significantly over the last 24 hours. The chart below displays a daily trend since COVID-19 began.



- Emergency Department (ED) Diversion & Computerized Tomography (CT) (ED closed to all ambulance transport due to no ED capacity or no CT available) for last 30 days 6/7/20 – 7/7/20 below.**



**Orange County Emergency Medical Services
Medical Health Operational Area Coordination (MHOAC)**

Online at: <http://www.healthdisasteroc.org/ems/archive>

07/07/20

HOSPITAL STATUS (Emergency Receiving Centers plus one)

(26): Anaheim Regional, Anaheim Global, Chapman Global, CHOC, CHOC at Mission, Foothill, Fountain Valley, Garden Grove, Hoag-Irvine, Hoag-Newport Beach, Huntington Beach, Kaiser-Anaheim, Kaiser-Irvine, La Palma, Los Alamitos, Mission –Laguna Beach, Mission-Mission Viejo, Orange Coast Memorial, Orange County Global, Placentia Linda, Saddleback Memorial, Saint Jude, South Coast Global, St. Josephs, UCI, West Anaheim

- Since 4/1/20 – 6/24/20, OC Hospitals have accepted 31 COVID+ interfacility transfers from Imperial County
- As of 7/6/20, hospitals reported 6 patients from Imperial County currently hospitalized

	ALL HOSPITALS (33)						EMERGENCY RECEIVING CENTERS					
DATE	Census ALL	Occupancy %	COVID+ Hospitalized	COVID+ ICU	% ICU Beds Available	% ICU Ventilators Available	Census ALL	Occupancy %	COVID+ Hospitalized	COVID+ ICU	% ICU Beds Available	% ICU Ventilators Available
6/23	3703	63%	406	154	39%	65%	3361	62%	394	147	39%	68%
6/24	3817	65%	437	161	38%	65%	3474	64%	426	154	39%	68%
6/25	3941	65%	451	166	40%	67%	3592	64%	440	159	41%	70%
6/26	3939	67%	467	179	38%	67%	3513	65%	456	172	39%	70%
6/27	3857	68%	492	170	39%	67%	3534	67%	481	163	40%	70%
6/28	3697	66%	485	175	41%	68%	3375	64%	474	168	41%	71%
6/29	3701	65%	510	176	41%	67%	3357	63%	498	169	41%	70%
6/30	3888	68%	542	192	38%	65%	3537	67%	528	184	39%	68%
7/1	3869	68%	556	193	36%	64%	3503	68%	542	185	37%	67%
7/2	3884	71%	584	187	34%	65%	3523	70%	567	179	35%	68%
7/3	3814	61%	594	193	34%	64%	3485	60%	577	185	35%	68%
7/4	3622	60%	624	197	40%	67%	3332	59%	607	189	41%	70%
7/5	3551	59%	634	203	42%	67%	3267	58%	617	195	43%	70%
7/6	3635	59%	659	224	40%	67%	3283	58%	644	216	41%	71%
7/7												
7/8												
7/9												
7/10												
7/11												
7/12												
7/13												
7/14												
7/15												
7/16												
7/17												
7/18												
7/19												

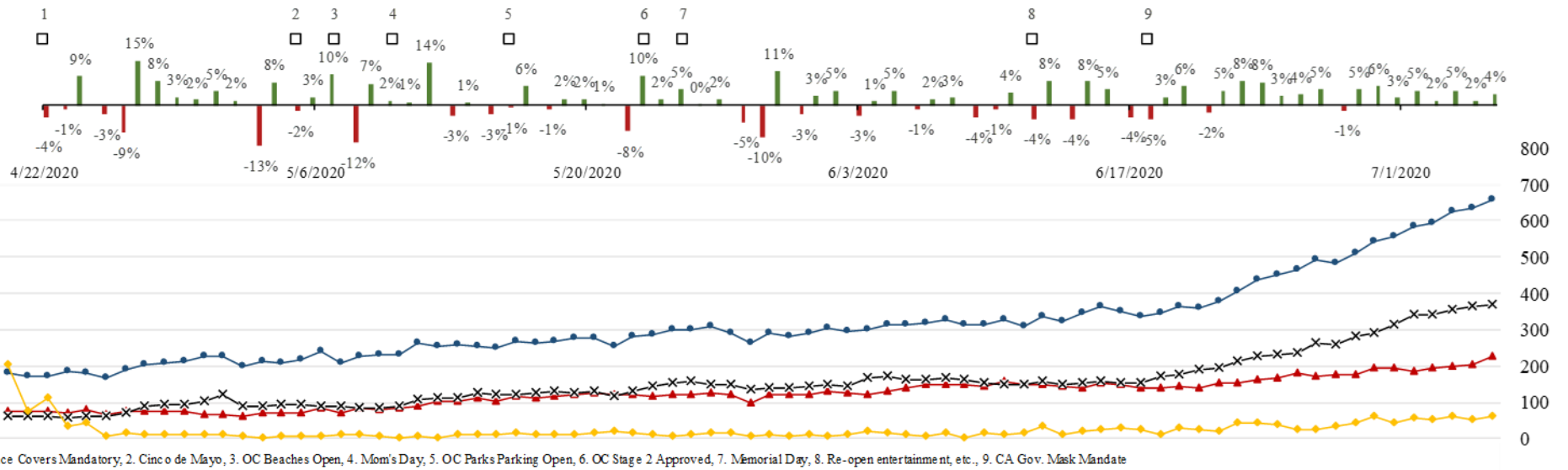
Orange County Emergency Medical Services Medical Health Operational Area Coordination (MHOAC)

Online at: <http://www.healthdisasteroc.org/ems/archive>

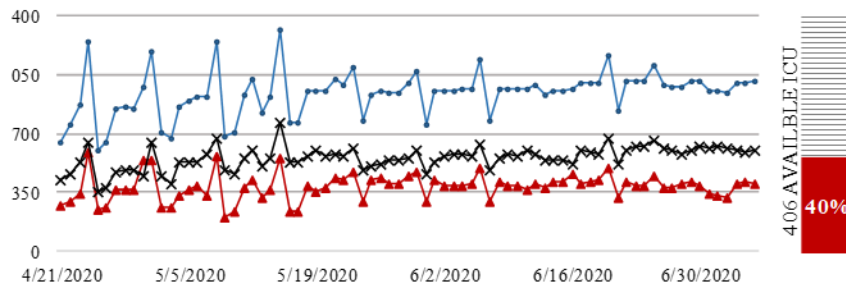
07/07/20

COVID 19 ORANGE COUNTY HOSPITAL SYSTEM DATA (CA SNOWFLAKE SERVER)(04/21/20 - 07/06/20) | 33 ACUTE CARE FACILITIES REPORTING

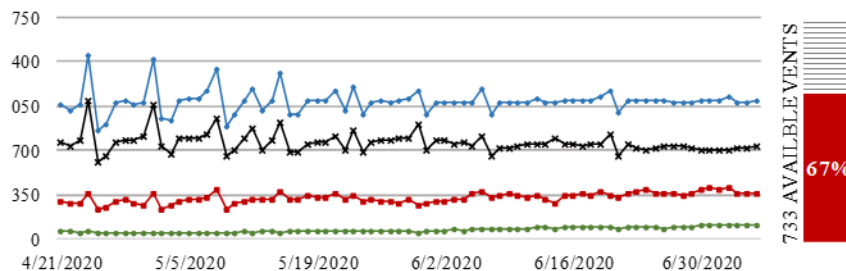
MEDSURG - 07/06/20 X			ICU - 07/06/20 ▲			ED OVERFLOW - 07/06/20 ◆			SYSTEM - 07/06/20 ●			1 DAY +/- (07/05/20)			3 DAY +/- (07/03/20)			7 DAY +/- (06/29/20)		
368	3	0.8%	224	21	10.3%	60	7	13.2%	659	25	3.9%	659	25	3.9%	594	65	10.9%	510	149	29.2%
▲			▲			▲			▲			▲			▲			▲		



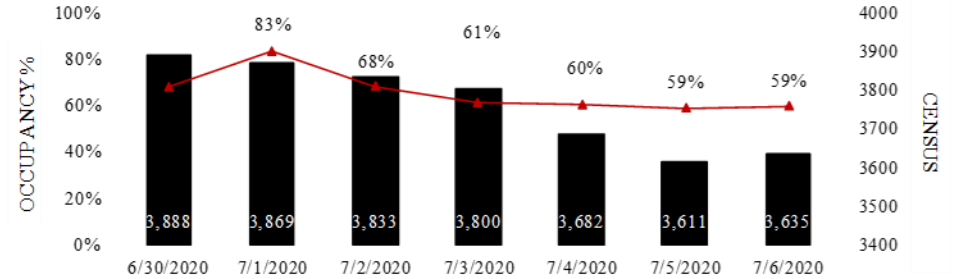
ICU CENSUS - (07/06/20) | ● SYSTEM-1009 | ▲ AVAILABLE-406 (40%) | X OCCUPIED-603



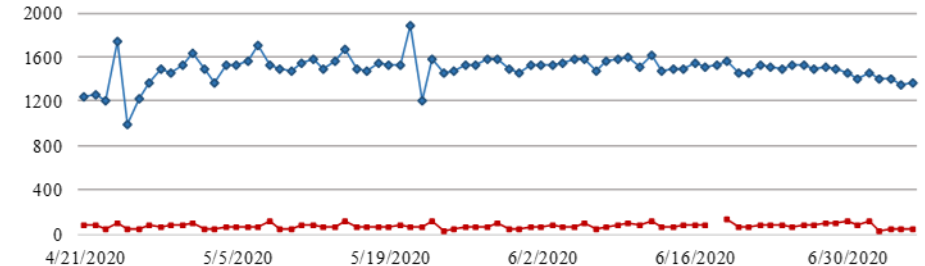
VENTILATORS - (07/06/20) | ◆ SYSTEM-1099 | X AVAILABLE-733 (67%) | OCCUPIED-366 | ●



7-DAY HISTORY BED OCCUPANCY - (07/06/20) | IN-PATIENT BEDS-3635 (59%)



SURGE CENSUS - (07/06/20) | ◆ SYSTEM-1365 | OCCUPIED-52



**Orange County Emergency Medical Services
Medical Health Operational Area Coordination (MHOAC)**

Online at: <http://www.healthdisasteroc.org/ems/archive>

07/07/20

Reporting Date: 7/05/20 (33/33 ACHs reported)	Acute Care Hospital PPE – DAYS ON HAND			
	0 - 3 days	4 - 14 days	15+ days	Non Reported
N95 Masks	2	8	17	6
Surgical Masks	2	7	18	6
Face Shields	1	9	17	6
PAPR Hoods	7	7	8	11
Eye Protection	1	5	21	6
Gowns	0	10	17	6
Gloves	2	10	12	6

- On a routine basis, the MHOAC tracks daily hospitalizations, census, occupancy and PPE availability as well as reviews epidemiologic data (doubling time).
- The criteria in the table below serve as objective measures to identify the need for hospitals to shift to crisis care strategies (i.e. activate surge plans) & uses the following assumptions:
 - Increased pressure in hospitals & on the EMS system requires a shift to crisis care strategies
 - Low levels of PPE will come earlier than decreased capacity and cause an abrupt change in capacity.
 - Increased hospitalizations and low PPE could have a synergistic effect to reduce capacity.
 - Low levels of PPE is not just a marker of capacity but causes capacity issues.

Hospital Criteria for shifting to Crisis Care Strategies			
LEGEND			
CRITERIA	STATUS		
	Normal Operations	Modified Operations Under Control	Modified Operations Assistance Needed
Rate of change in Hospitalized COVID-19 patients (doubling time over last 7 days)	Never to 4 weeks to double	4 weeks to 2 weeks to double	Less than 2 weeks to double
Absolute COVID-19 Census in the hospital	Less than 500	500-750	>750
Hospital census as a percentage of capacity	<80%	80% to 90%	>90%
Supply of PPE available in the hospitals	>4 weeks	2 to 4 weeks	< 2 weeks

Hospital Criteria for shifting to Crisis Care Strategies			
7/7/20			
CRITERIA	STATUS		
	Normal Operations	Modified Operations Under Control	Modified Operations Assistance Needed
Rate of change in Hospitalized COVID-19 patients (doubling time over last 7 days)		19.1 days	
Absolute COVID-19 Census in the hospital		659	
Hospital census as a percentage of capacity		59%	
Supply of PPE available in the hospitals		2 to 4 weeks	

- It is important to note that the basis of the table is that these are concepts and criteria that we use to judge how the system is being affected by the COVID-19 pandemic. The numbers and colors given are a guideline, not a hard and fast rule. For example, if in 2 weeks our hospitalized cases go up by a factor of 1.8 to a level of 740, we will still consider that to be very concerning and would not wait until the doubling time worsens or the census tops 750.
- Hospital Surge Plans are already activated to an extent, as conditions worsen (higher COVID-19 inpatient burden, Staffing struggles, PPE concerns) the crisis care strategies of
- Does this trigger a shift to crisis care strategies and an activation of surge plans?
That number is one factor. Surge plans are already activated to an extent. Increased concerns (more factors in the worrisome category) means increased amount of surge as in the next question.

**Orange County Emergency Medical Services
Medical Health Operational Area Coordination (MHOAC)**

Online at: <http://www.healthdisasteroc.org/ems/archive>

07/07/20

- What are the surge plans and crisis care strategies that would be implemented?
-Modifying units, such as converting beds/rooms to ICUs and negative pressure rooms
-Expanded beds also includes surge tents
-Flexing nursing staffing ratios
- How was the 750-patient threshold determined?
Initial surge capacity of the hospitals was around 1000 beds. We figured that if we were getting close to that number, we need to take extra steps beyond the initial ones. Again, the exact number is not as important as the concept of stress on the system.
- All hospitals are impacted. We initially saw the highest degree of hospital burden in the hot spots of the county (Anaheim and Santa Ana), but as COVID-19 has become more widespread we are seeing the burden shift to hospitals based on their size, not just location.

AGENCY OPERATIONS CENTER / LOGISTICS SECTION

- AOC Activated at Level II; Hours of Operation Mon & Thurs 0900-1600; Warehouse Ops M-F 0900-1600
- SCARCE Resources: N95, Gloves, Testing Kits, Wipes
- DEPLETED Resources: Gowns

Total Activity		
INQUIRIES	RR RECEIVED	RR FILLED
13,299	6,593	4,905 (74%)

Logistics Daily Units Distributed 07-06-20	
N95 Mask	3,020
Surgical Mask	0
Gown	450
Gloves	4,500
Face Shields/Eye Protection	96
Hand Sanitizer	100
Other	92
Total Units	8,258

Inventory Report February 18 to July 2, 2020	
Medical Supply/Equipment Total Units Distributed	
N95 Mask	1,934,445
Surgical Mask	767,305
Gowns	608,223
PPE-Suit	12,812
Gloves	486,500
Eye Protection	130,790
Hand Sanitizer	206,989
Other Items	249,313
Total Units	4,396,377

ALTERNATE CARE SITE

*Site open indefinitely to support hospital/SNF decompression

Fairview (COVID-19 +)		
Patient Census (as of 7/2/2020 07:30)	CURRENT	TOTAL
Orange County	17	33
LA County	0	13
Ventura County	0	1
Total patients CENSUS / TOTAL ACCEPTED	17	47
Patients Discharged		TOTAL
AMA		0
DISCHARGED		29
TRANSFERRED		0