

**Orange County Emergency Medical Services
Medical Health Operational Area Coordination (MHOAC)**

Online at: <http://www.healthdisasteroc.org/ems/archive>

07/30/20

OVERVIEW OF CURRENT SITUATION (07/30/20 0630) Source: Johns Hopkins University & Medicine <https://coronavirus.jhu.edu/map.html>

Cases / Deaths
 Worldwide: 17,061,855 / 667,808
 Nationwide: 4,428,896 / 150,733
 California: 485,832 / 8,912
 Orange County: 35,778 / 604 Source: [Orange County COVID-19 Case Counts & Testing Figures](#)

ORANGE COUNTY PUBLIC HEALTH (as of 7/30/20 1000)

Orange County COVID-19 Summary* click for full details	Sat 7/25/20	Sun 7/26/20	Mon 7/27/20	Tue 7/28/20	Wed 7/29/20	Thu 7/30/20	Fri 7/31/20
Cases Reported to Date	33,953	34,373	34,646	34,833	35,272	35,778	
Deaths Reported to Date	562	564	566	581	587	604	
Tests Reported Today	4,689	1,826	2,117	6,100	5,366	-1,337*	
Cumulative Tests to Date	389,381	391,207	393,324	399,424	404,790	403,453*	
<p><i>*Data posted is always preliminary & subject to change. More information may become available as individual case investigations are completed. LOCAL DATA MAY BE DIFFERENT FROM THE STATE WEBSITE DATA</i></p> <p><i>NOTE: California Department of Public Health's (CDPH) reporting and surveillance system (CalREDIE) experienced an issue with duplicate test reports resulting in a higher number of Cumulative PCR Tests To Date on the website yesterday (404,790). Adjusting for these duplicate tests reports, today's Cumulative PCR Tests To Date will be 1,337 fewer (403,453)</i></p>							

PUBLIC HEALTH

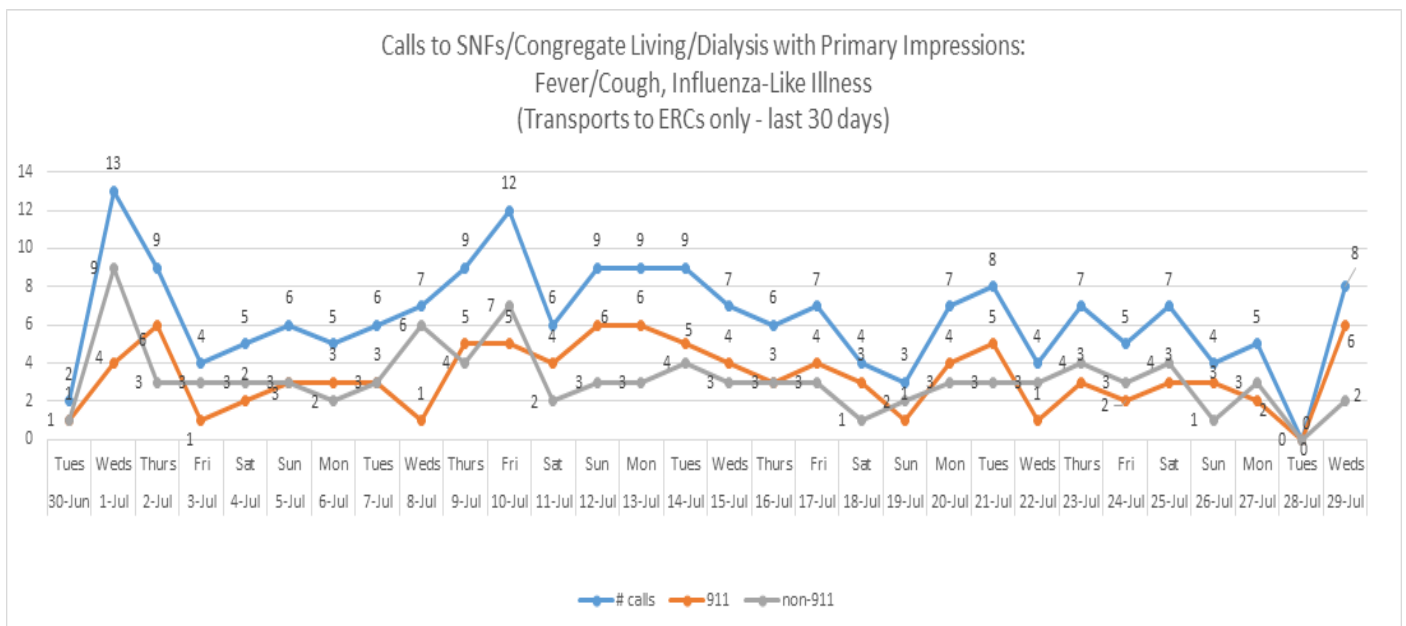
- Orange County continues to see a concerning level of disease transmission, though beginning to see some signs of improvement.
 - State target metric is 25 or fewer cases per 100,000; OC is at 151/100,000, down from 221/100,000 last week
 - State metric for testing positivity rate is <8%; OC is currently at 11.1%, down from 12.6% last week, though OC has exceeded 8% for more than a month
- Orange County is doing well with testing, from the perspective of State monitoring criteria;
 - Testing target is >150 tests per day per 100,000 residents
 - OC metric yesterday was 156 tests per day per 100,000 residents
 - OC has exceeded the state target for 28 consecutive days
- Hospitalizations have leveled some in recent days, however are still elevated and are up increased 30% in the past month from 492 to 640
- Some of the recent trends are encouraging showing some reduction in disease transmission and leveling of hospitalizations, however, we still need further reduction in disease transmission to protect the hospitals and healthcare systems.
- As a reminder, in order to reduce disease transmission it requires high adherence by the people of OC to the mitigation strategies to slow spread;
 - Stay home as much as possible, especially high risk persons (65 or older, or underlying health conditions)
 - Stay home when sick
 - Isolation of cases and quarantine of all contacts (within 6 feet for 15 minutes or more)
 - Practice social distancing at all times; 6 feet or more
 - Wear face coverings when unable to maintain social distancing; high compliance is critical given asymptomatic transmission
 - Wash hands frequently
 - Avoid touching face
 - Disinfect frequently touched surfaces often

**Orange County Emergency Medical Services
Medical Health Operational Area Coordination (MHOAC)**
Online at: <http://www.healthdisasteroc.org/ems/archive>
07/30/20

COVID-19 Testing Super Site (PCR – only) <https://occovid19.ochealthinfo.com/supersite>

- Testing is now available through an **appointment**-based drive-thru site that can serve more than 1,000 people daily; Wed-Sun 0800-1600 at Anaheim Convention Center, West Street entrance
- Available to Orange County residents at no-cost for people who meet Public Health priorities for testing and **cannot get a test through their medical provider (doctor)**. Please contact your provider first
- Public Health criteria for priority testing:
 - Healthcare workers and first responders
 - Workers in congregate living settings such as skilled nursing facilities, jails, or homeless shelter settings
 - Individuals with close contact (15 minutes or more within 6 feet) to someone known or suspected to have COVID-19
 - Essential workers – those with contact with the public such as such as grocery store workers, social service providers, government workers, etc.

SKILLED NURSING/ASSISTED LIVING/RESIDENTIAL CARE FACILITY – TRENDS

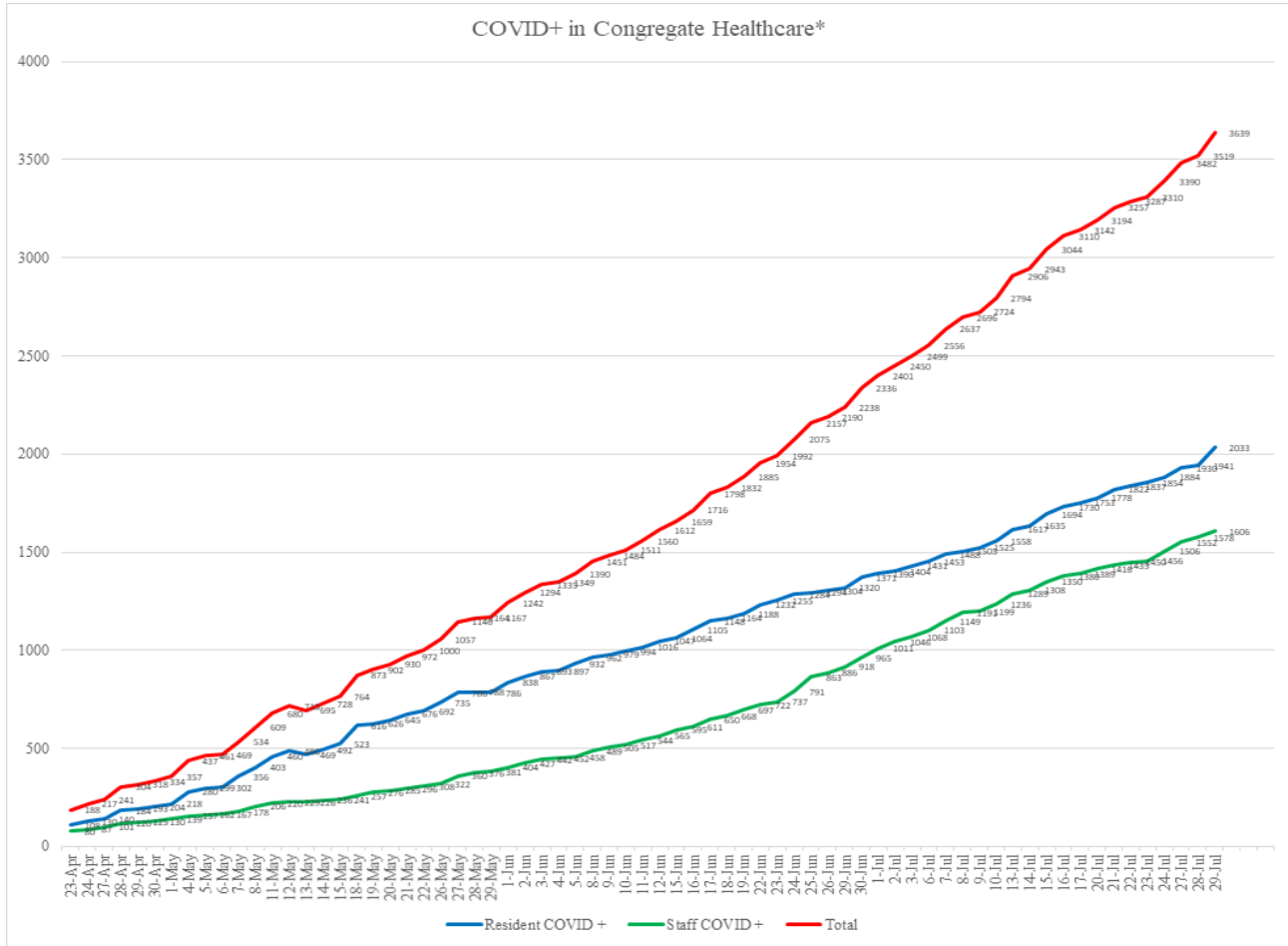


Reporting Date: 7/30/20 (73/73 SNFs reported)	Skilled Nursing Facility PPE – DAYS ON HAND*			
	0 - 3 days	4 - 7 days	8-14 days	15+ days
N95 Masks	1	5	20	47
Surgical Masks	0	5	14	54
Eye Protection	0	3	17	53
Gowns	0	5	18	50
Gloves	1	5	17	50
Alcohol-Based Hand Sanitizer	0	4	16	53

**Orange County Emergency Medical Services
Medical Health Operational Area Coordination (MHOAC)**

Online at: <http://www.healthdisasteroc.org/ems/archive>

07/30/20

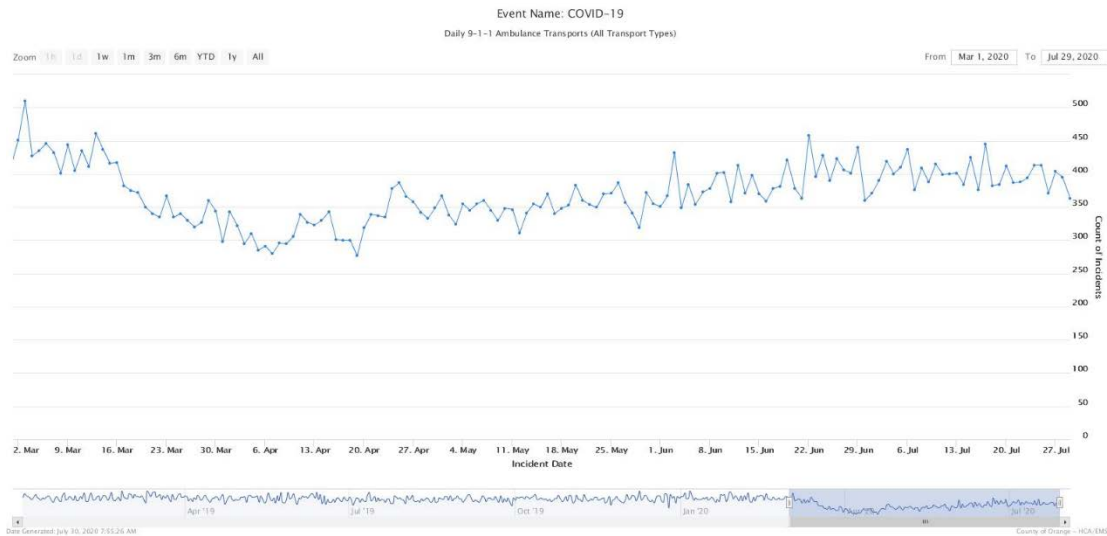


Facility Outbreaks (as of 7/29/20 1700)		
Facility Type by Licensing Category	#	An "Outbreak" is two (2) or more confirmed cases of COVID-19 in facility residents occurring within 14 days.
Skilled Nursing Facility	46	Advanced Rehab Center of Tustin, Alamitos West Health & Rehab, Alta Gardens Care Center, Anaheim Crest, Anaheim Healthcare Center, Anaheim Terrace, Buena Vista Care Center, Chapman Care Center, Country Villa Plaza, Coventry Court, Crystal Cove Care Center, Flagship Healthcare Center, French Park Care Center, Garden Grove Convalescent Hospital, Garden Park Care Center, Gordon Lane Care Center, Harbor Villa Care Center, Healthcare Center of Orange County, Huntington Valley Healthcare Center, Kindred Brea SAU, La Palma Nursing Center, Laguna Hills Health & Rehab, Lake Forest Nursing Center, Leisure Court Nursing Center, MainPlace Post Acute, Manor Care FV, New Orange Hills, Orange Healthcare & Wellness, Orangegrove Rehab Hospital, Pacific Haven Healthcare Center, Palm Terrace, Park Anaheim Healthcare Center, Park Regency Care Center, Rowntree Gardens, Sea Cliff Healthcare Center, Seal Beach Health & Rehab, South Coast Post Acute, St. Edna Subacute & Rehab, Terrace View Care Center, The Hills Post Acute, The Pavilion at Sunny Hills, Victoria Healthcare, Walnut Village, West Anaheim Extended Care, Windsor Gardens Center of Anaheim, Windsor Gardens Fullerton
Elderly Assisted Living	41	Acacia Villa, ActivCare Yorba Linda, Anaheim Crown Plaza, Ardent Care Assisted Living, Atria Del Sol, Brookdale Anaheim, Brookdale Nohl Ranch, Brookdale San Juan Capistrano, Cambridge House, Carmel Village, Crown Cove, Emerald Court, Golden Leisure Home, Heathers McKinley, Heathers Wintergreen, Heritage Point, Huntington Terrace, Kaego's Richman Gardens, Kamstra Care Home, Karlton Residential, Oakmont-Capriana, Pacific Shores Laguna Hills, Pacific Shores Mission Viejo, Pacifica Royale, Park Plaza, Park Regency Assisted Living, Rowntree Gardens, Sealcliff Assisted Living, Silverado Newport Mesa, Silverado San Juan Capistrano, Silverado Tustin Hacienda, St Francis Home, St Therese Residential Care, Sunflower Garden, Sunrise Villa Bradford, Sunrise Yorba Linda, The Groves of Tustin, The Regency, Valley View, Vivante on the Coast, Whitten Heights

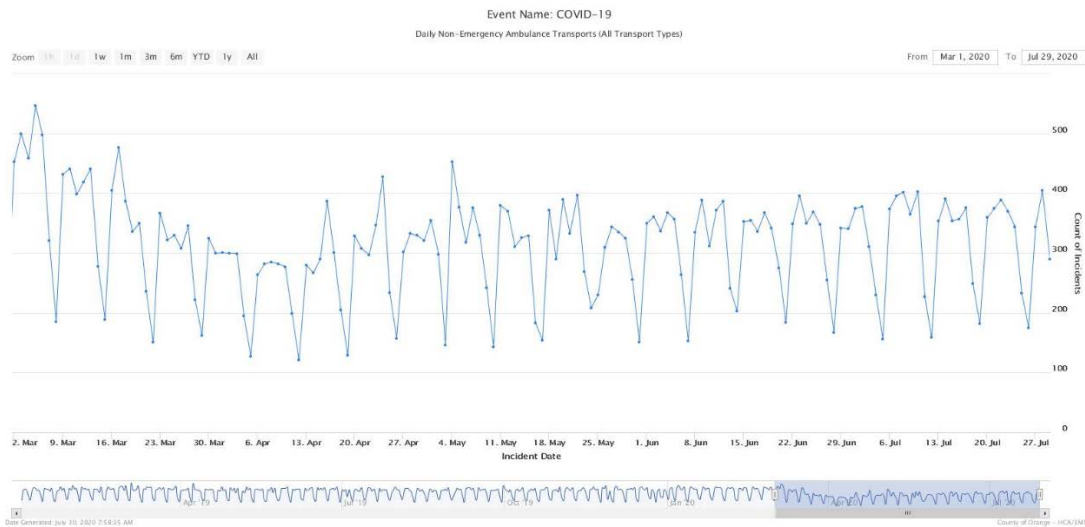
Orange County Emergency Medical Services
Medical Health Operational Area Coordination (MHOAC)
Online at: <http://www.healthdisasteroc.org/ems/archive>
07/30/20

EMERGENCY MEDICAL SERVICES STATUS

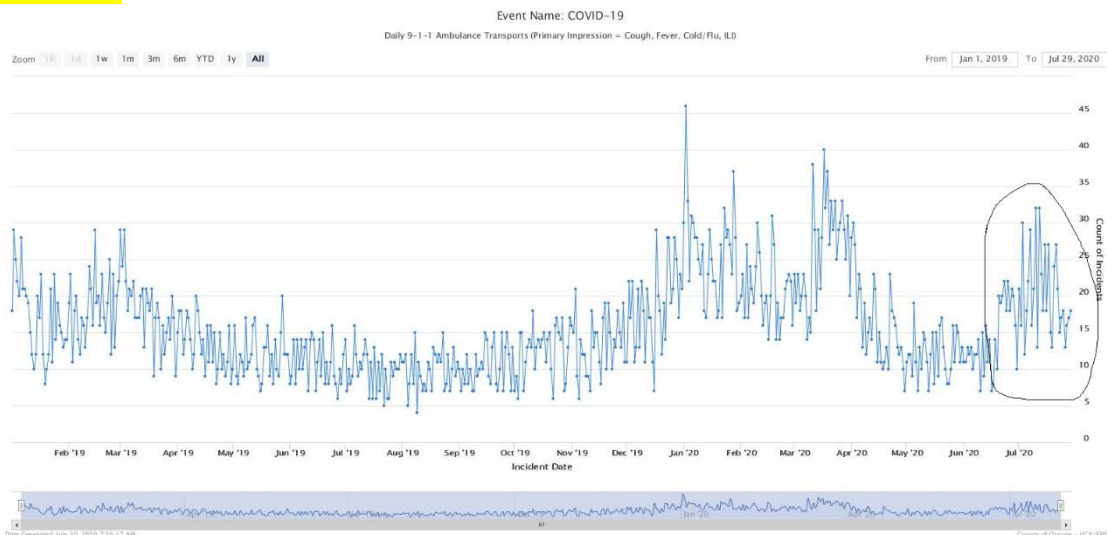
- 9-1-1 ambulance transport volume **continued lower this week compared to last week**. They are now averaging about 15% below normal.



- Non-emergency ambulance transports were **stable with a modest increase this week**. They were about 30% below normal.



- Primary Impressions of Cold/Flu/ILI by 9-1-1 EMS providers **continue to trend lower and are approaching baseline levels**.



**Orange County Emergency Medical Services
Medical Health Operational Area Coordination (MHOAC)**

Online at: <http://www.healthdisasteroc.org/ems/archive>

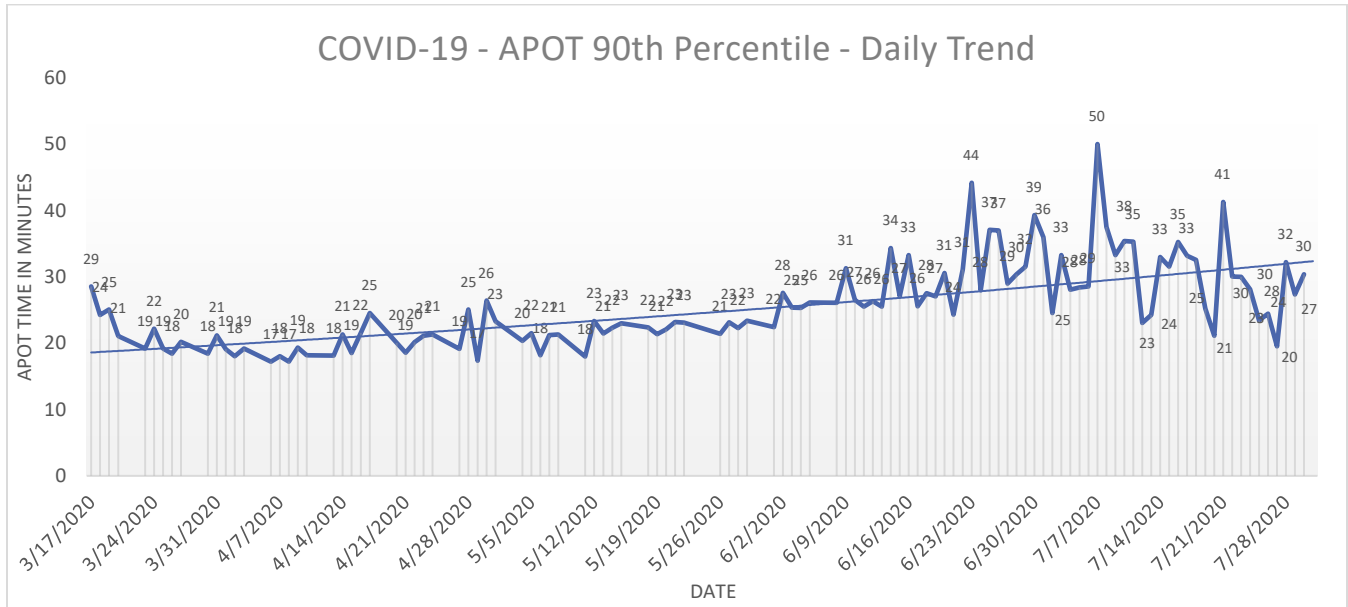
07/30/20

- Ambulance Patient Offload Time (APOT) is defined as the time the ambulance arrives at the receiving destination (wheels stop) to the time that the ambulance crew physically transfers the patient to the ED gurney. Last 24 hours: **Current Average APOT is: 18m23s / Current 90th Percentile APOT is: 30m41s**

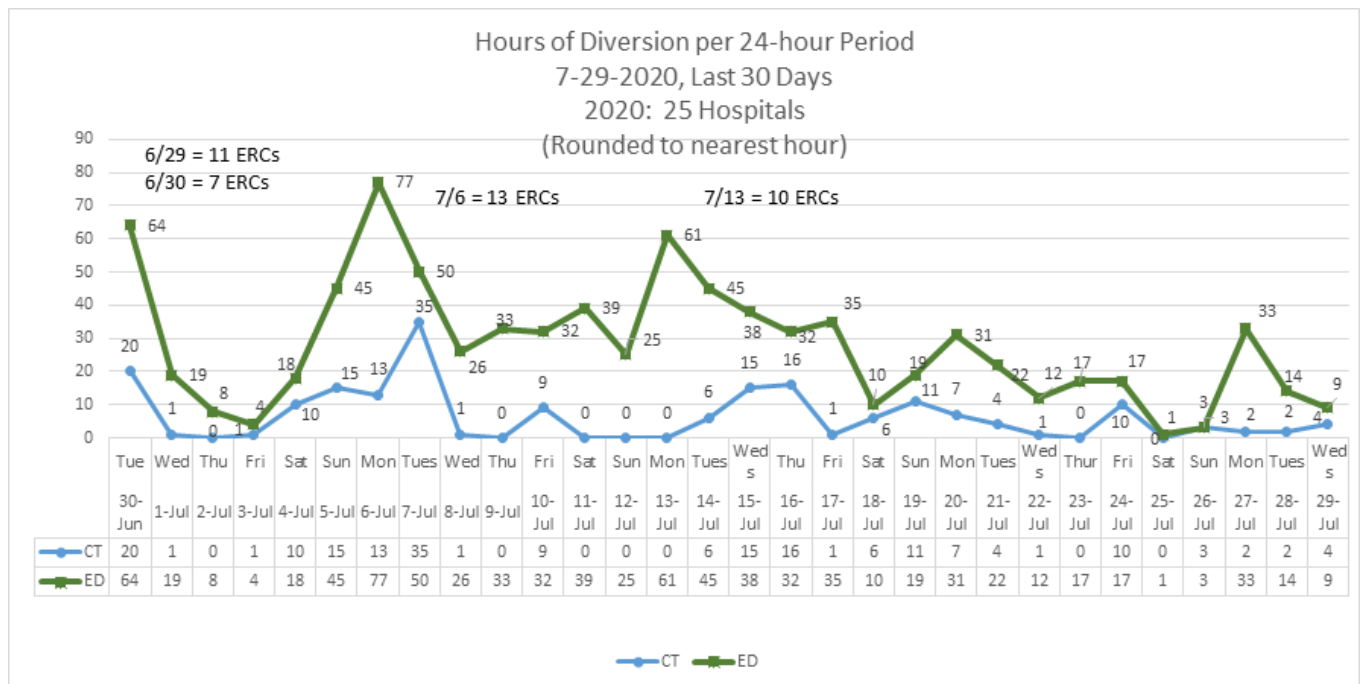
The chart below displays a daily trend since the COVID-19 event began.

- Nine (9) ERCs had APOT times greater than thirty (30) minutes.
- Two (2) ERCs had APOT times greater than sixty (60) minutes.

Note: a handful of ERCs were close to the 30 minute threshold, but were not over it.



- **Emergency Department (ED) Diversion & Computerized Tomography (CT) (ED closed to all ambulance transport due to no ED capacity or no CT available) for the last 30 days 6/30/20 – 7/29/20 below.**



**Orange County Emergency Medical Services
Medical Health Operational Area Coordination (MHOAC)**

Online at: <http://www.healthdisasteroc.org/ems/archive>

07/30/20

(26): Anaheim Regional, Anaheim Global, Chapman Global, CHOC, CHOC at Mission, Foothill, Fountain Valley, Garden Grove, Hoag-Irvine, Hoag-Newport Beach, Huntington Beach, Kaiser-Anaheim, Kaiser-Irvine, La Palma, Los Alamitos, Mission –Laguna Beach, Mission-Mission Viejo, Orange Coast Memorial, Orange County Global, Placentia Linda, Saddleback Memorial, Saint Jude, South Coast Global, St. Josephs, UCI, West Anaheim

DATE	ALL HOSPITALS (33)						EMERGENCY RECEIVING CENTERS					
	Census ALL	Occupancy %	COVID+ Hospitalized	COVID+ ICU	% ICU Beds Available	% ICU Ventilators Available	Census ALL	Occupancy %	COVID+ Hospitalized	COVID+ ICU	% ICU Beds Available	% ICU Ventilators Available
7/7	3801	62%	679	234	40%	66%	3448	61%	666	226	40%	69%
7/8	3970	65%	691	236	37%	64%	3606	64%	674	229	37%	68%
7/9	3916	63%	672	227	39%	65%	3547	62%	656	221	40%	69%
7/10	3985	65%	671	231	38%	65%	3614	63%	660	225	39%	69%
7/11	3871	63%	675	233	37%	65%	3510	62%	664	227	38%	69%
7/12	3711	60%	674	235	43%	66%	3352	59%	663	229	44%	70%
7/13	3658	59%	712	237	41%	65%	3309	58%	701	231	42%	69%
7/14	3818	62%	722	238	39%	64%	3474	61%	707	232	39%	68%
7/15	3942	64%	711	245	36%	64%	3585	63%	696	239	37%	68%
7/16	3979	64%	682	235	38%	64%	3625	63%	668	228	39%	68%
7/17	3999	65%	692	232	36%	65%	3640	64%	686	226	37%	68%
7/18	4008	65%	665	214	39%	63%	3698	65%	659	208	40%	66%
7/19	3759	61%	666	213	41%	62%	3434	60%	660	207	42%	65%
7/20	3754	61%	700	234	39%	64%	3405	60%	692	226	40%	68%
7/21	3843	62%	699	233	39%	63%	3530	62%	692	226	40%	67%
7/22	3669	69%	690	233	46%	67%	3336	68%	680	227	47%	70%
7/23	3714	70%	652	215	47%	61%	3358	69%	642	209	48%	66%
7/24	3533	65%	685	203	40%	61%	3143	63%	679	202	41%	66%
7/25	3681	68%	687	201	40%	62%	3289	67%	679	199	41%	67%
7/26	3657	71%	661	204	39%	60%	3267	69%	639	202	40%	65%
7/27	3567	68%	640	203	40%	58%	3195	66%	617	200	41%	63%
7/28	3651	69%	626	204	37%	65%	3285	68%	607	201	38%	71%
7/29	3739	71%	592	189	38%	57%	3373	69%	574	188	39%	62%
7/30												

*HHS significantly changed [reporting requirements](#) for hospitals effective 07/22/20.

Current data is posted on the CDPH website at:

<https://public.tableau.com/views/COVID-19HospitalsDashboard/Hospitals?%3Aembed=y&%3AshowVizHome=no>

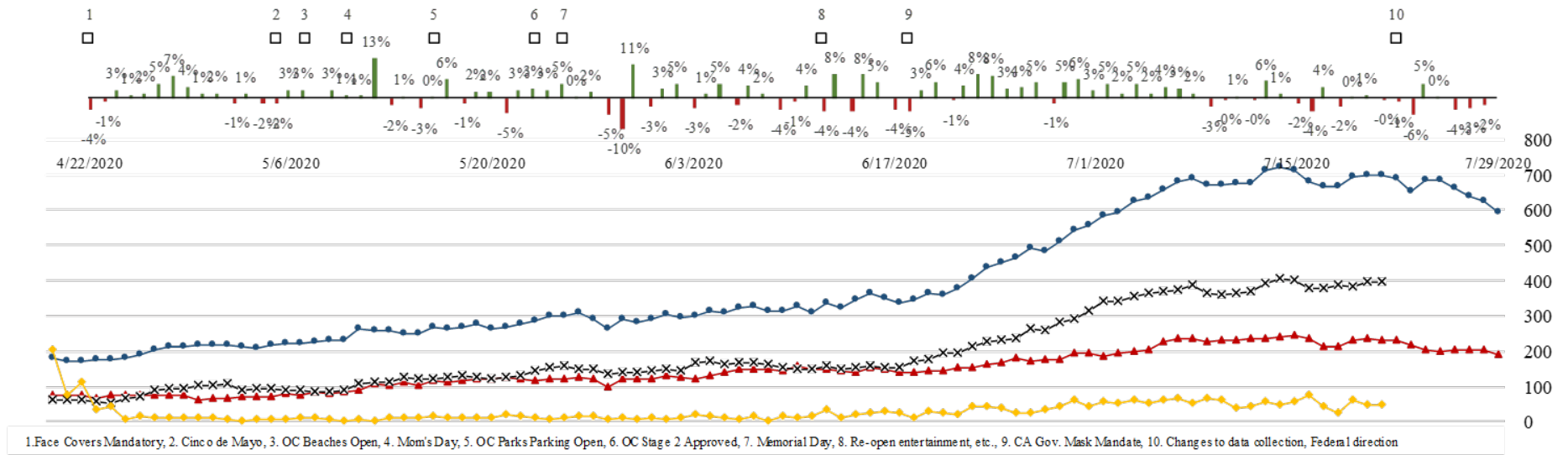
Orange County Emergency Medical Services Medical Health Operational Area Coordination (MHOAC)

Online at: <http://www.healthdisasteroc.org/ems/archive>

07/30/20

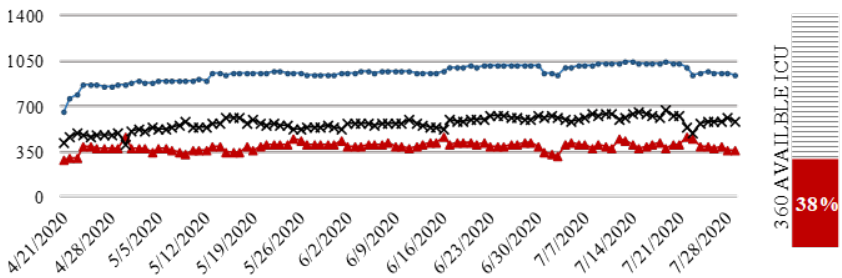
COVID 19 ORANGE COUNTY HOSPITAL SYSTEM DATA (CA SNOWFLAKE SERVER)(04/21/20 - 07/29/20) | 33 ACUTE CARE FACILITIES REPORTING

MEDSURG - 07/29/20 X	ICU - 07/29/20 ▲			ED OVERFLOW - 07/29/20 ◆			SYSTEM - 07/29/20 ●			1 DAY +/- (07/28/20)			3 DAY +/- (07/26/20)			7 DAY +/- (07/22/20)		
STOPPED REPORTING AS OF 7.22.20*	189	-15	-7.4%	STOPPED REPORTING AS OF 7.22.20*			592	-34	-5.4%	592	-34	-5.4%	661	-69	-10.4%	690	-98	-14.2%

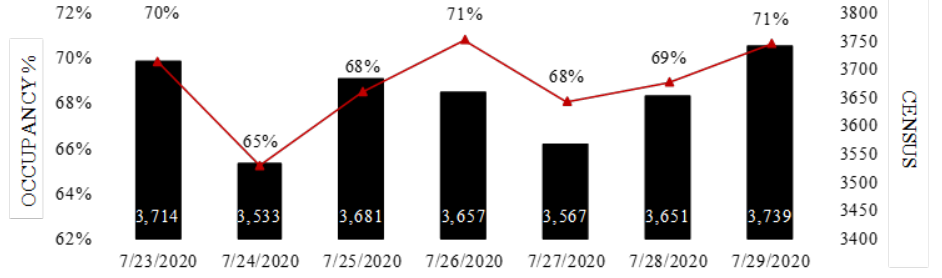


1.Face Covers Mandatory, 2. Cinco de Mayo, 3. OC Beaches Open, 4. Mom's Day, 5. OC Parks Parking Open, 6. OC Stage 2 Approved, 7. Memorial Day, 8. Re-open entertainment, etc., 9. CA Gov. Mask Mandate, 10. Changes to data collection, Federal direction

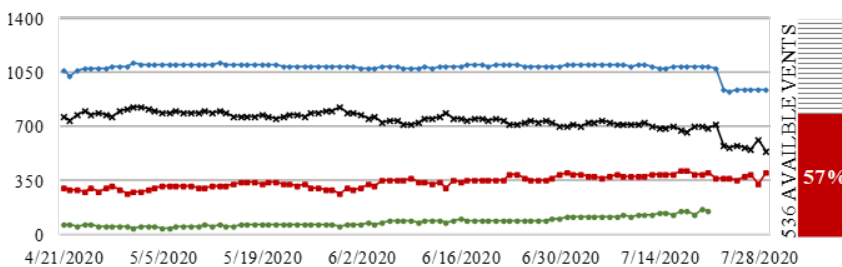
ICU CENSUS - (07/29/20) | ● SYSTEM-945 | ▲ AVAILABLE-360 (38%) | X OCCUPIED-585



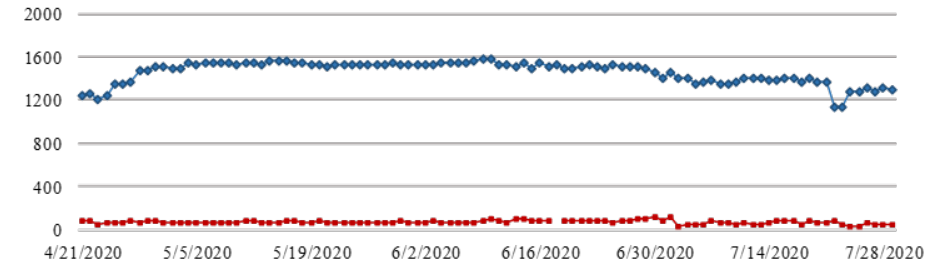
7-DAY HISTORY BED OCCUPANCY - (07/29/20) | IN-PATIENT BEDS- 3739 (71%)



VENTILATORS - (07/29/20) | ● SYSTEM- 937 | ▲ AVAILABLE- 536 (57%) | X OCCUPIED- 401 | ◆ COVID-



SURGE CENSUS - (07/29/20) | ● SYSTEM- 1297 | ▲ OCCUPIED- 44



*Previously tracked, but no longer receiving information as of 7/22/20 due to changes in data reporting as required by Department of Health and Human Services. Future updates anticipated, but unknown timeline as data is provided by CDPH

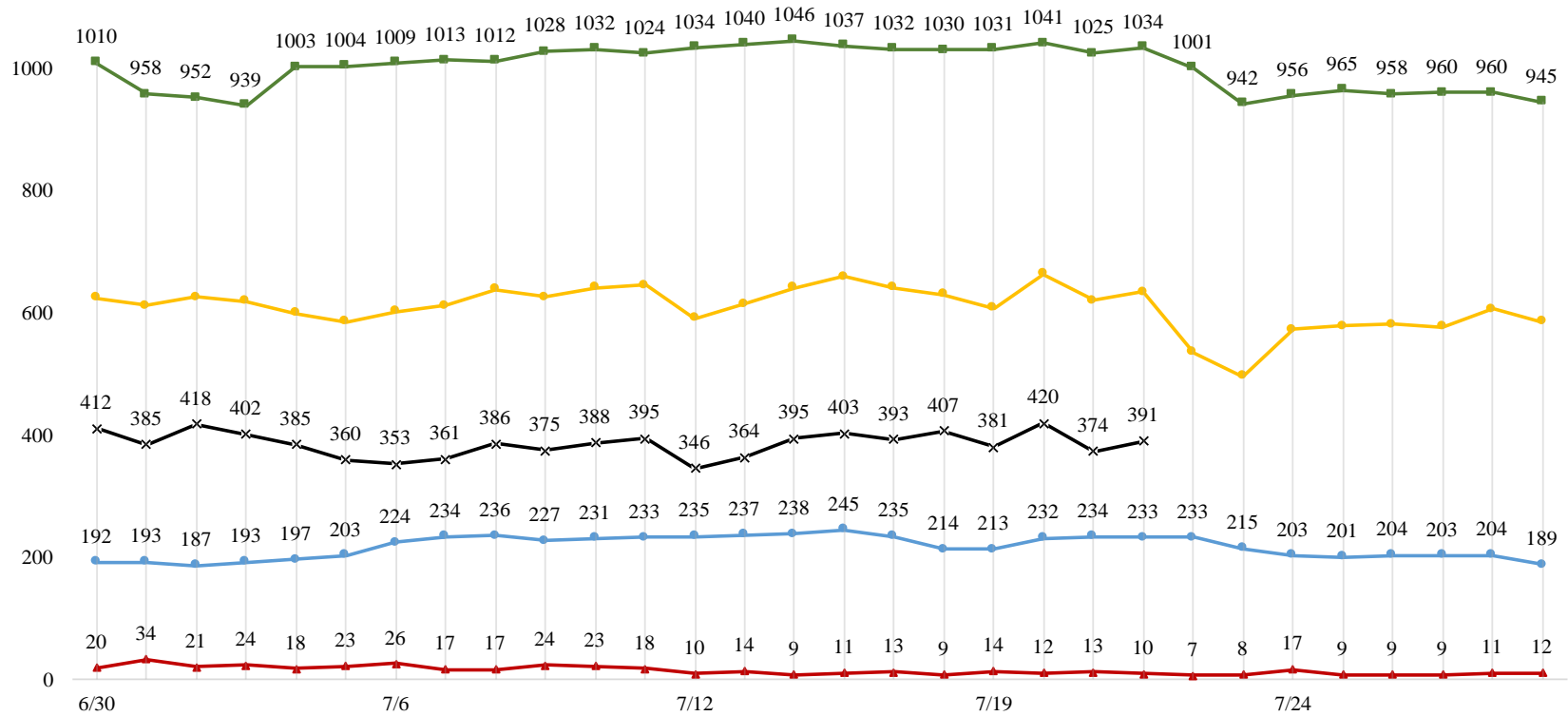
**Orange County Emergency Medical Services
Medical Health Operational Area Coordination (MHOAC)**

Online at: <http://www.healthdisasteroc.org/ems/archive>

07/30/20

**COVID 19 ORANGE COUNTY HOSPITAL SYSTEM DATA (CA SNOWFLAKE SERVER)
OCCUPIED ICU BEDS (06/30/20 - 07/29/20) | 33 ACUTE CARE FACILITIES REPORTING**

1200



DATE	6/30	7/1	7/2	7/3	7/4	7/5	7/6	7/7	7/8	7/9	7/10	7/11	7/12	7/13	7/14	7/15	7/16	7/18	7/19	7/17	7/20	7/21	7/22	7/23	7/24	7/25	7/26	7/27	7/28	7/29	
CONFIRMED ●	192	193	187	193	197	203	224	234	236	227	231	233	235	237	238	245	235	214	213	235	234	233	233	215	203	201	204	203	204	189	
SUSPECTED ▲	20	34	21	24	18	23	26	17	17	24	23	18	10	14	9	11	13	9	14	13	13	10	7	8	17	9	9	9	11	12	
OTHER ICU X	412	385	418	402	385	360	353	361	386	375	388	395	346	364	395	403	393	407	381	393	374	391	0	0	0	0	0	0	0	0	
SYSTEM OCC ◆	624	612	626	619	600	586	603	612	639	626	642	646	591	615	642	659	641	630	608	641	621	634	536	496	573	578	581	577	606	585	
SYSTEM TTL ■	1010	958	952	939	1003	1004	1009	1013	1012	1028	1032	1024	1034	1040	1046	1037	1032	1030	1031	1032	1025	1034	1001	942	956	965	965	958	960	960	945

CONFIRMED - The number of laboratory-confirmed positive COVID patients that are in the ICU at the hospital. This includes all ICU beds (NICU, PICU, and adult). NICU and PICU patients were added to ICU reporting on April 21, 2020.

SUSPECTED - The number of symptomatic patients, with tests for COVID pending laboratory confirmation, that are in the ICU at the hospital. This includes all ICU beds (NICU, PICU, and adult). NICU and PICU were added to ICU reporting on April 21, 2020.

OTHER ICU - The number of non-COVID confirmed or suspected patients that are in the ICU at the hospital. This includes all ICU beds (NICU, PICU, and adult). NICU and PICU were added to ICU reporting on April 21, 2020. Removed July 22, 2020.

SYSTEM - OCC - The number of all staffed ICU beds occupied by patients at the time the data is collected. This includes all ICU beds (NICU, PICU, and adult). NICU and PICU were added to reporting on April 21, 2020. This is a calculated field. sum('ICU COVID Confirmed Patients','ICU Other Patients','ICU Suspected COVID Patients')

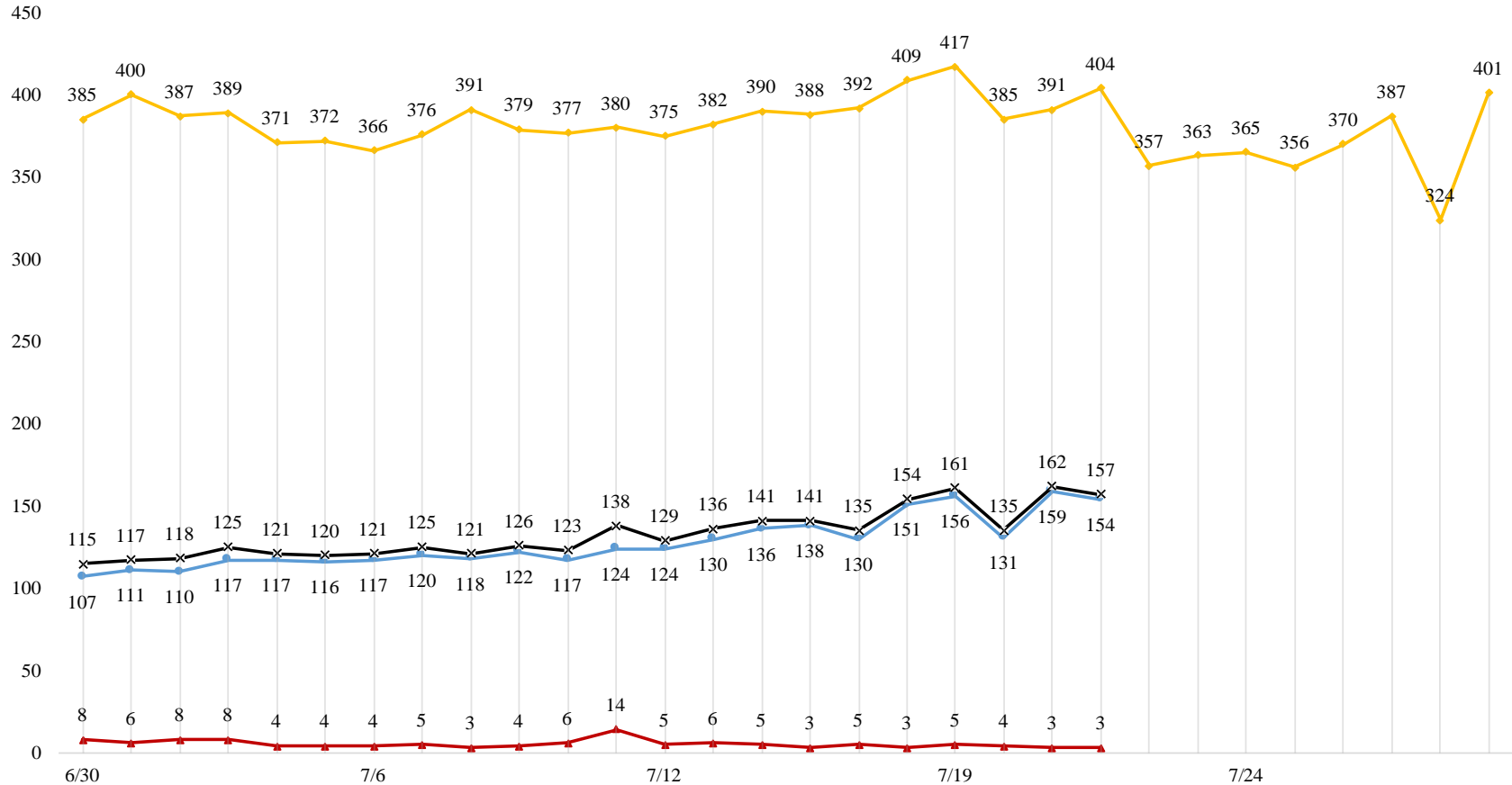
SYSTEM TTL - The number of all staffed ICU beds including surge/expansion beds used for critically ill inpatients. Note, the number of ICU beds provided should be higher than the number in the ICU

**Orange County Emergency Medical Services
Medical Health Operational Area Coordination (MHOAC)**

Online at: <http://www.healthdisasteroc.org/ems/archive>

07/30/20

**COVID 19 ORANGE COUNTY HOSPITAL SYSTEM DATA (CA SNOWFLAKE SERVER)
VENTILATORS IN USE (06/30/20 - 07/29/20) | 33 ACUTE CARE FACILITIES REPORTING**



DATE	6/30	7/1	7/2	7/3	7/4	7/5	7/6	7/7	7/8	7/9	7/10	7/11	7/12	7/13	7/14	7/15	7/16	7/17	7/18	7/19	7/20	7/21	7/22	7/23	7/24	7/25	7/26	7/27	7/28	7/29
CONFIRMED ●	107	111	110	117	117	116	117	120	118	122	117	124	124	130	136	138	130	151	156	130	159	154	0	0	0	0	0	0	0	0
SUSPECTED ▲	8	6	8	8	4	4	4	5	3	4	6	14	5	6	5	3	5	3	5	5	3	3	0	0	0	0	0	0	0	0
CVD+TTL X	115	117	118	125	121	120	121	125	121	126	123	138	129	136	141	141	135	154	161	135	162	157	0	0	0	0	0	0	0	0
SYSTEM OCC ◆	385	400	387	389	371	372	366	376	391	379	377	380	375	382	390	388	392	409	417	392	391	404	357	363	365	356	370	387	324	401

CONFIRMED - Mechanical Ventilators in use for COVID Confirmed Patients - The number of patients hospitalized in an inpatient bed who have laboratory-confirmed COVID and are on a mechanical ventilator at the time the data is collected.

SUSPECTED - Mechanical Ventilators in use for Suspected COVID Patients - The number of suspected COVID patients hospitalized in an inpatient bed who are on a mechanical ventilator at the time the data is collected.

CVD+TTL - Mechanical Ventilators in use for Hospitalized COVID Patients - The number of patients hospitalized in an inpatient bed who have suspected or confirmed COVID and are on a mechanical ventilator at the time the data is collected. Added to SmartSheet April 21, 2020.

SYSTEM - OCC - The number of mechanical ventilators, including anesthesia machines and portable/transport ventilators, in use for patients with any diagnosis in the hospital - including Neonatal (NICU), Pediatric (PICU), and adult ICU units. As of April 21, 2020 NICU/PICU patients were added to ventilator reporting.

**Orange County Emergency Medical Services
Medical Health Operational Area Coordination (MHOAC)**

Online at: <http://www.healthdisasteroc.org/ems/archive>

07/30/20

*HHS significantly changed [reporting requirements](#) for hospitals effective 07/22/20.
Counts of "Eye Protection" are no longer reported by hospitals.

Reporting Date: 7/28/20* (33/33 ACHs reported)	Acute Care Hospital PPE – DAYS ON HAND			
	0 - 3 days	4 - 14 days	15+ days	Non Reported
N95 Masks	0	6	22	5
Surgical Masks	0	6	21	6
Face Shields	0	6	19	8
PAPR Hoods	4	4	12	13
Eye Protection	0	0	0	33
Gloves	0	11	15	7
Gowns	3	8	16	6

Reported Operational Status Acute Care Hospitals w/ Emergency Departments			
22 / 25 Reporting	Normal Operations	Modified Operations Using Internal Corporate Resources	Modified Operations Need Assistance
	1	12	1

Reported Service Category Status Acute Care Hospitals w/ Emergency Departments (#25)		
Status Item	Yes	%
Command Center Activated	13	52%
Surge Plan Activated	16	64%
Canceled Procedures/Services	4	16%
Supply Issues	5	20%
CDPH Flex	10	40%
Increased Morgue Capacity	14	56%

- On a routine basis, the MHOAC tracks daily hospitalizations, census, occupancy and PPE availability as well as reviews epidemiologic data (doubling time).
- The criteria in the table below serve as objective measures to identify the need for hospitals to shift to crisis care strategies (i.e. activate surge plans) & uses the following assumptions:
 - Increased pressure in hospitals & on the EMS system requires a shift to crisis care strategies
 - Low levels of PPE will come earlier than decreased capacity and cause an abrupt change in capacity.
 - Increased hospitalizations and low PPE could have a synergistic effect to reduce capacity.
 - Low levels of PPE is not just a marker of capacity but causes capacity issues.

Hospital Criteria for shifting to Crisis Care Strategies LEGEND			
CRITERIA	STATUS		
	Normal Operations	Modified Operations Under Control	Modified Operations Assistance Needed
Rate of change in Hospitalized COVID-19 patients (doubling time over last 7 days)	Never to 4 weeks to double	4 weeks to 2 weeks to double	Less than 2 weeks to double
Absolute COVID-19 Census in the hospital	Less than 500	500-750	>750
Hospital census as a percentage of capacity	<80%	80% to 90%	>90%
Supply of PPE available in the hospitals	>4 weeks	2 to 4 weeks	< 2 weeks

**Orange County Emergency Medical Services
Medical Health Operational Area Coordination (MHOAC)**

Online at: <http://www.healthdisasteroc.org/ems/archive>

07/30/20

Hospital Criteria for shifting to Crisis Care Strategies			
7/30/20			
CRITERIA	STATUS		
	Normal Operations	Modified Operations Under Control	Modified Operations Assistance Needed
Rate of change in Hospitalized COVID-19 patients (doubling time over last 7 days)	66.5 days		
Absolute COVID-19 Census in the hospital		592	
Hospital census as a percentage of capacity	71%		
Supply of PPE available in the hospitals		2 to 4 weeks	

- It is important to note that the basis of the table is that these are concepts and criteria that we use to judge how the system is being affected by the COVID-19 pandemic. The numbers and colors given are a guideline, not a hard and fast rule. For example, if in 2 weeks our hospitalized cases go up by a factor of 1.8 to a level of 740, we will still consider that to be very concerning and would not wait until the doubling time worsens or the census tops 750.
- Hospital Surge Plans are already activated to an extent, as conditions worsen (higher COVID-19 inpatient burden, Staffing struggles, PPE concerns)
- Does this trigger a shift to crisis care strategies and an activation of surge plans?
That number is one factor. Surge plans are already activated to an extent. Increased concerns (more factors in the worrisome category) means increased amount of surge as in the next question.
- What are the surge plans and crisis care strategies that would be implemented?
-Modifying units, such as converting beds/rooms to ICUs and negative pressure rooms
-Expanded beds also includes surge tents
-Flexing nursing staffing ratios
- How was the 750-patient threshold determined?
Initial surge capacity of the hospitals was around 1000 beds. We figured that if we were getting close to that number, we need to take extra steps beyond the initial ones. Again, the exact number is not as important as the concept of stress on the system.
- All hospitals are impacted. We initially saw the highest degree of hospital burden in the hot spots of the county (Anaheim and Santa Ana), but as COVID-19 has become more widespread we are seeing the burden shift to hospitals based on their size, not just location.

AGENCY OPERATIONS CENTER / LOGISTICS SECTION

- AOC Activated at Level II; Hours of Operation Mon & Thurs 0900-1600; Warehouse Ops M-F 0900-1600
- As of 07/20/20 - AOC Warehouse received a large shipment of over 160 pallets from CDPH
- SCARCE Resources: Gloves, Wipes

Total Activity		
INQUIRIES	RR RECEIVED	RR FILLED
13,829 +73	7,204 +48	5,377 +44

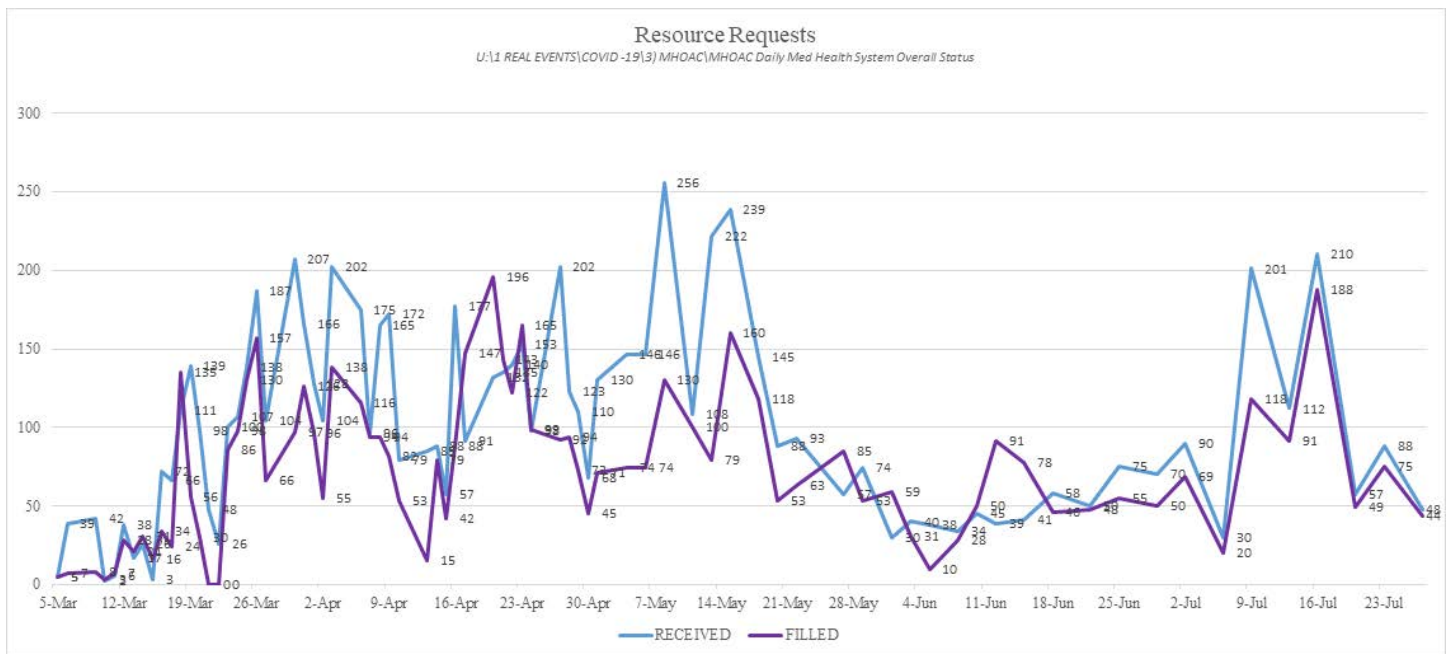
**Orange County Emergency Medical Services
Medical Health Operational Area Coordination (MHOAC)**

Online at: <http://www.healthdisasteroc.org/ems/archive>

07/30/20

Logistics Daily Units Distributed 07-27-20	
N95 Mask	7,500
Surgical Mask	1,000
Gown	8,100
Gloves	19,100
Face Shields/Eye Protection	7,100
Hand Sanitizer	0
Other	4,860
Total Units	47,660

Inventory Report February 18 to July 27, 2020	
Medical Supply/Equipment Total Units Distributed	
N95 Mask	2,724,600
Surgical Mask	1,293,175
Gowns	1,132,331
PPE-Suit	17,238
Gloves	1,410,750
Eye Protection	236,891
Hand Sanitizer	210,832
Other Items	414,375
Total Units	7,440,192



ALTERNATE CARE SITE

*Site open indefinitely to support hospital/SNF decompression

Fairview (COVID-19 +)		
Patient Census (as of 7/30/2020 07:30)	CURRENT	TOTAL
Orange County	12	62
LA County	4	21
Ventura County	0	1
Total patients CENSUS / TOTAL ACCEPTED	16	84
Patients Discharged		TOTAL
AMA		4
DISCHARGED		64
TRANSFERRED		0