

**Orange County Emergency Medical Services
Medical Health Operational Area Coordination (MHOAC)**
Online at: <http://www.healthdisasteroc.org/ems/archive>
09/16/20

OVERVIEW OF CURRENT SITUATION (09/16/20 0630) Source: Johns Hopkins University & Medicine <https://coronavirus.jhu.edu/map.html>

Cases / Deaths
 Worldwide: 29,656,504 / 936,905
 Nationwide: 6,607,955 / 196,254
 California: 769,119 / 14,619
 Orange County: 51,259 / 1,111 Source: [Orange County COVID-19 Case Counts & Testing Figures](#)

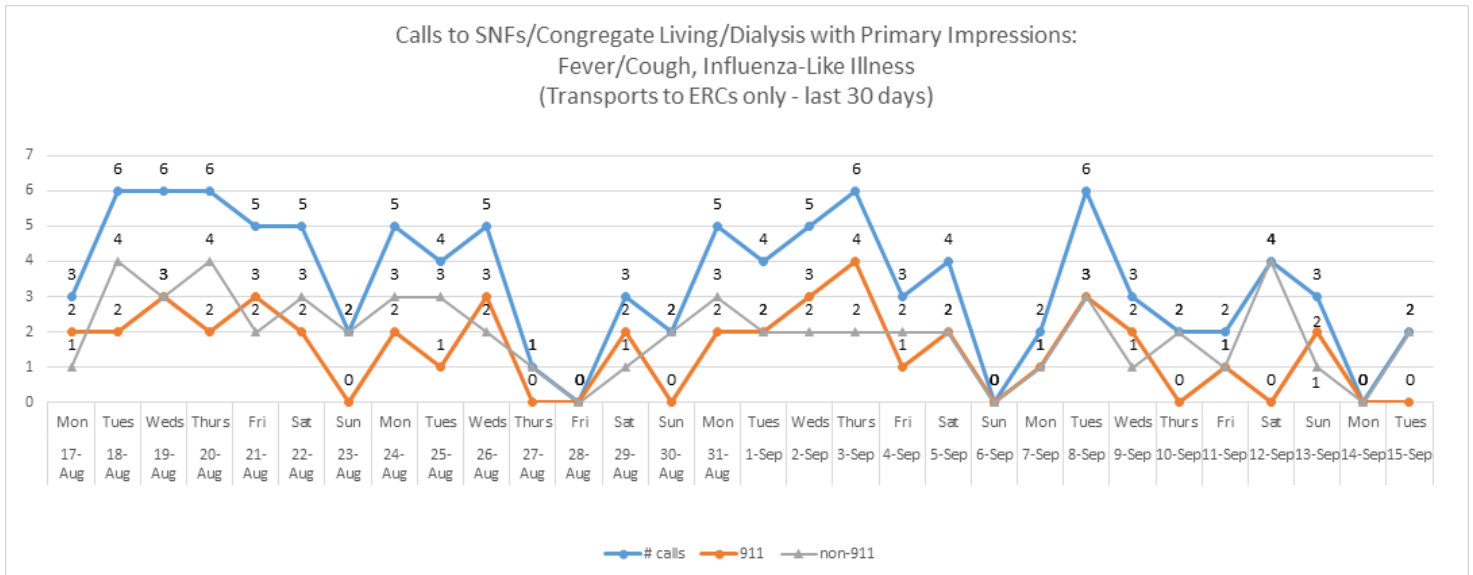
ORANGE COUNTY PUBLIC HEALTH (as of 09/16/20 1000)

Orange County COVID-19 Summary* click for full details	Sat 9/12/20	Sun 9/13/20	Mon 9/14/20	Tue 9/15/20	Wed 9/16/20	Thu 9/17/20	Fri 9/18/20
Cases Reported to Date	50,760	50,930	50,974	51,124	51,259		
Deaths Reported to Date	1,093	1,093	1,093	1,105	1,111		
Tests Reported Today	8,558	5,136	3,689	8,480	6,054		
Cumulative Tests to Date	732,422	737,558	741,247	749,727	755,781		

Data posted is always preliminary & subject to change. More information may become available as individual case investigations are completed. **LOCAL DATA MAY BE DIFFERENT FROM THE STATE WEBSITE DATA*

SKILLED NURSING/ASSISTED LIVING/RESIDENTIAL CARE FACILITY – TRENDS

*Data Source: Orange County Medical Emergency Data System (OC-MEDS)



*Data Source: California Department of Public Health (CDPH)

Reporting Date: 9/15/20 (73/73 SNFs reported)	Skilled Nursing Facility PPE – DAYS ON HAND*			
	0 - 3 days	4 - 7 days	8-14 days	15+ days
N95 Masks	0	6	18	49
Surgical Masks	0	3	16	54
Eye Protection	1	2	17	53
Gowns	0	4	15	54
Gloves	1	4	18	50
Alcohol-Based Hand Sanitizer	0	4	15	54

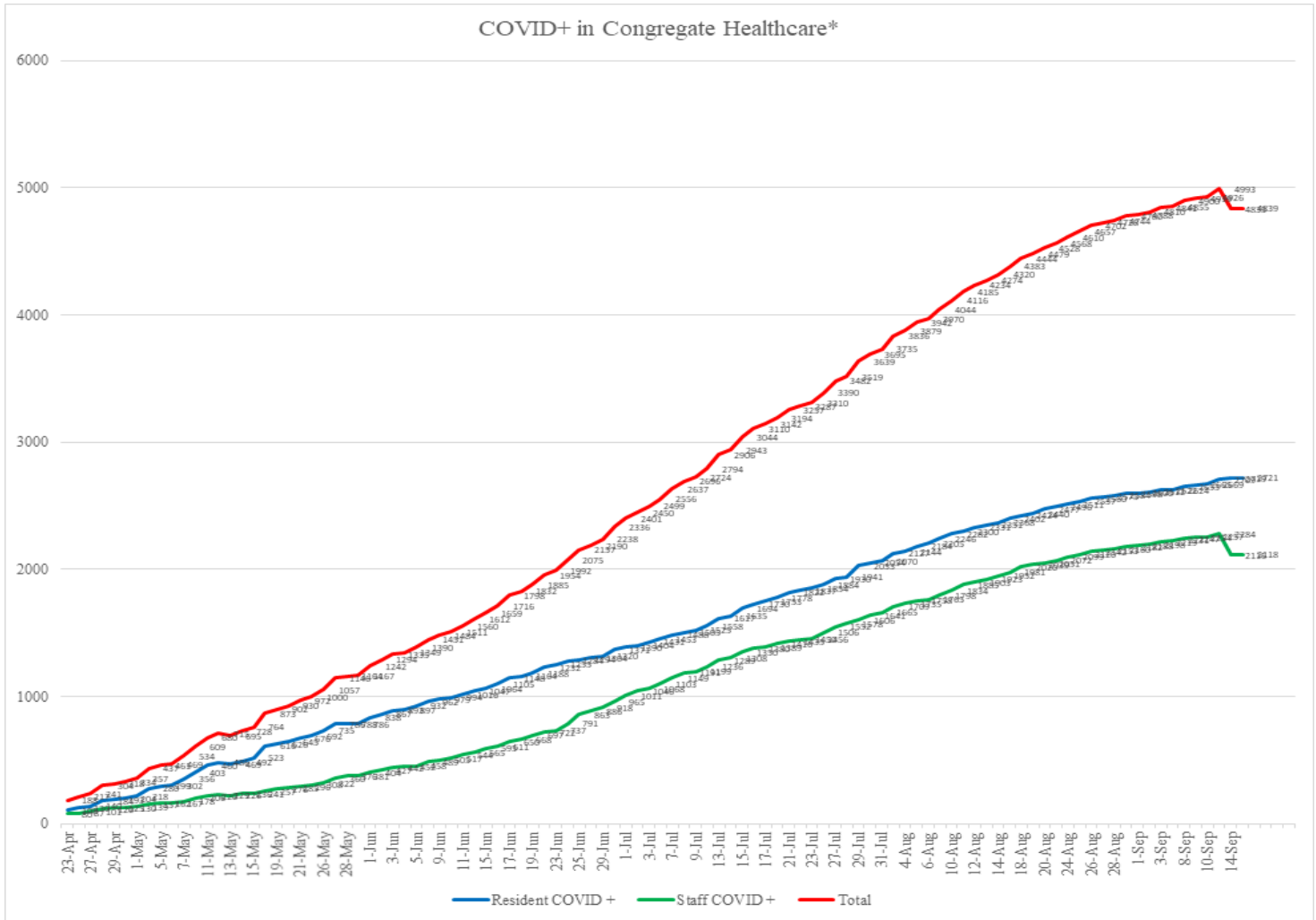
**Orange County Emergency Medical Services
Medical Health Operational Area Coordination (MHOAC)**

Online at: <http://www.healthdisasteroc.org/ems/archive>

09/16/20

*Data Source: Orange County Health Care Agency – Public Health

NOTE: Decrease in the COVID + in staff seen on graph is due to data being cleaned and removing duplicates of those that work in multiple OC facilities or are contract staff and care for residents at multiple facilities.



*Data Source: Orange County Health Care Agency – Public Health

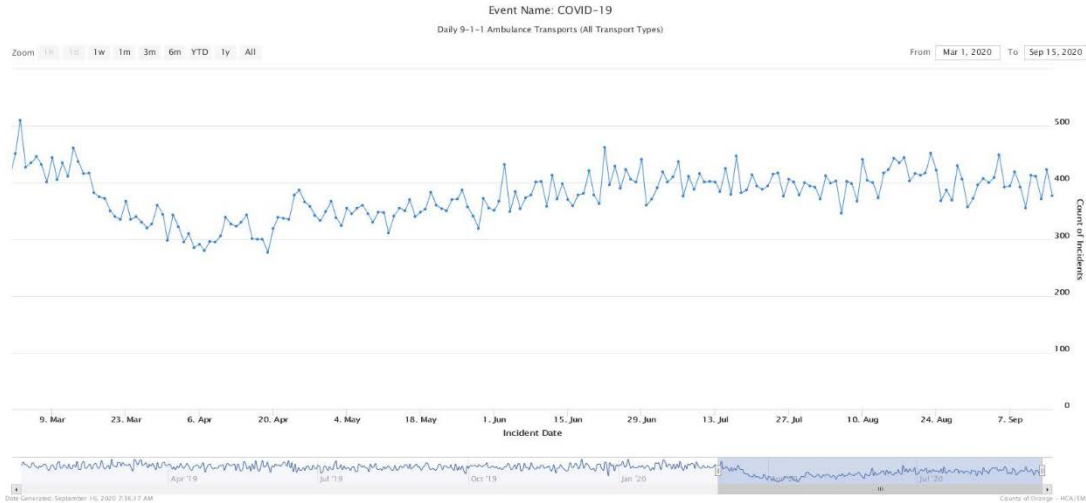
Current Facility Outbreaks (as of 9/15/20 1700)		
Facility Type by Licensing Category	#	An "Outbreak" is two (2) or more confirmed cases of COVID-19 in facility occurring within 14 days.
Skilled Nursing Facility	9	Alamitos West Health & Rehabilitation, Anaheim Healthcare Center, Llc, Anaheim Terrace Care Center, Garden Park Care Center, Greenfield Care Center Of Fullerton, Llc, Harbor Villa Care Center, Mainplace Post Acute, St. Edna Subacute And Rehabilitation Center, The Pavilion At Sunny Hills
Elderly Assisted Living	8	Arbor Palms Of Anaheim, Atria Del Sol, Meridian At Anaheim Hills, The, Pacifica Senior Living South Coast, Park Regency Retirement Center, San Clemente Villas By The Sea, Sunny Crest Senior Living, Walnut Village

**Orange County Emergency Medical Services
Medical Health Operational Area Coordination (MHOAC)**
Online at: <http://www.healthdisasteroc.org/ems/archive>
09/16/20

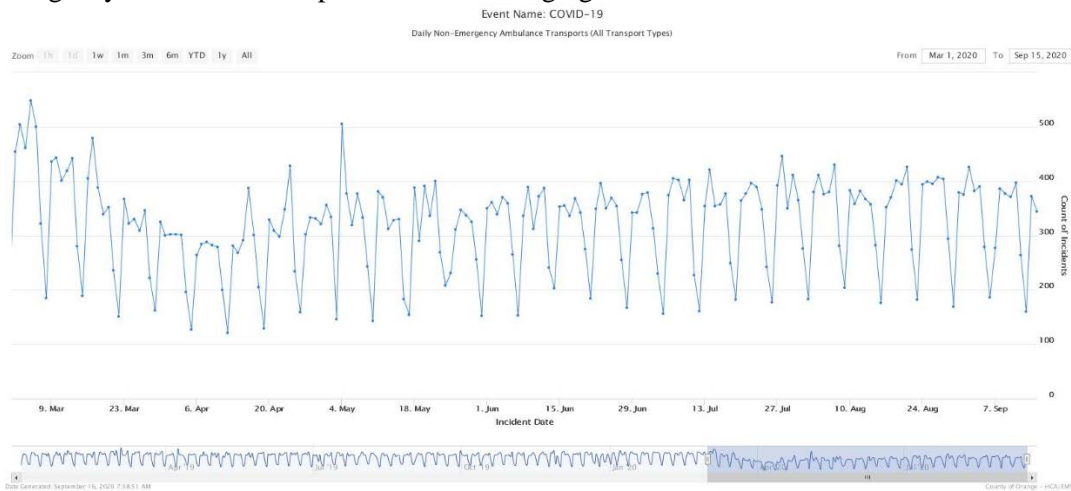
EMERGENCY MEDICAL SERVICES STATUS

*Data Source: Orange County Medical Emergency Data System (OC-MEDS)

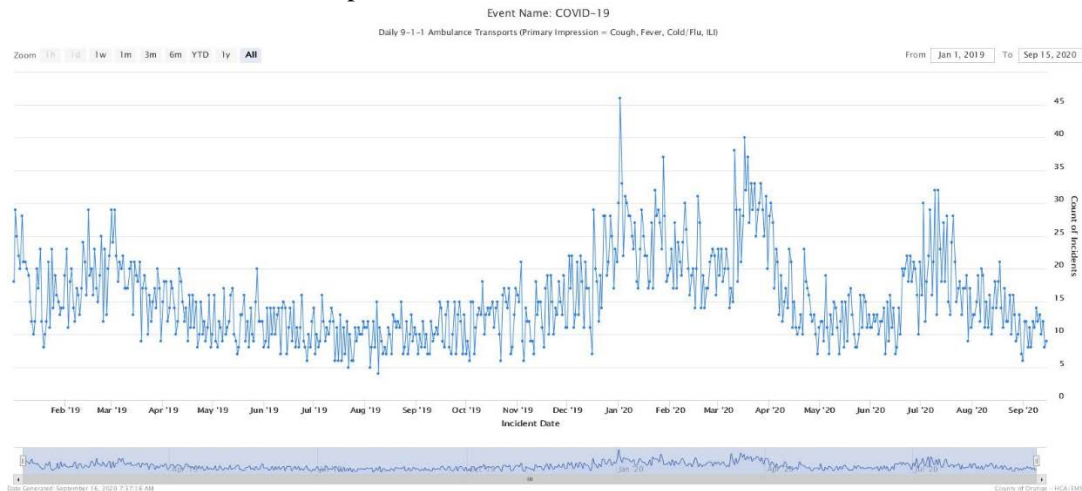
- 9-1-1 transport volume continues to average about 15% below normal.



- Non-emergency ambulance transports are still averaging about 20% below normal.



- 9-1-1 transport volume of patients with a primary or secondary impression of Cold/Flu/ILI/COVID has been at or near baseline for at least a couple weeks.



**Orange County Emergency Medical Services
Medical Health Operational Area Coordination (MHOAC)**

Online at: <http://www.healthdisasteroc.org/ems/archive>

09/16/20

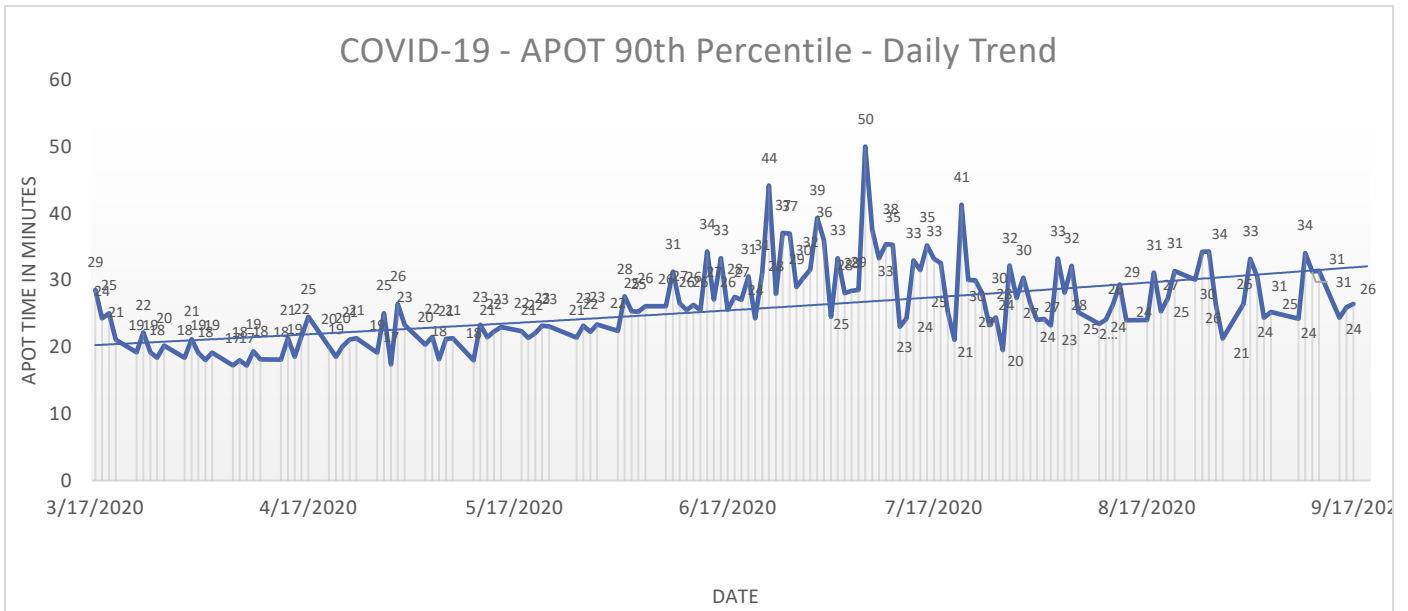
- Ambulance Patient Offload Time (APOT) is defined as the time the ambulance arrives at the receiving destination (wheels stop) to the time that the ambulance crew physically transfers the patient to the ED gurney. Last 24 hours: **Current Average APOT is: 13m54s / Current 90th Percentile APOT is: 26m44s**

The chart below displays a daily trend since the COVID-19 event began.

- Six (6) ERCs had APOT times greater than thirty (30) minutes.
- One (1) ERC had APOT times greater than sixty (60) minutes.

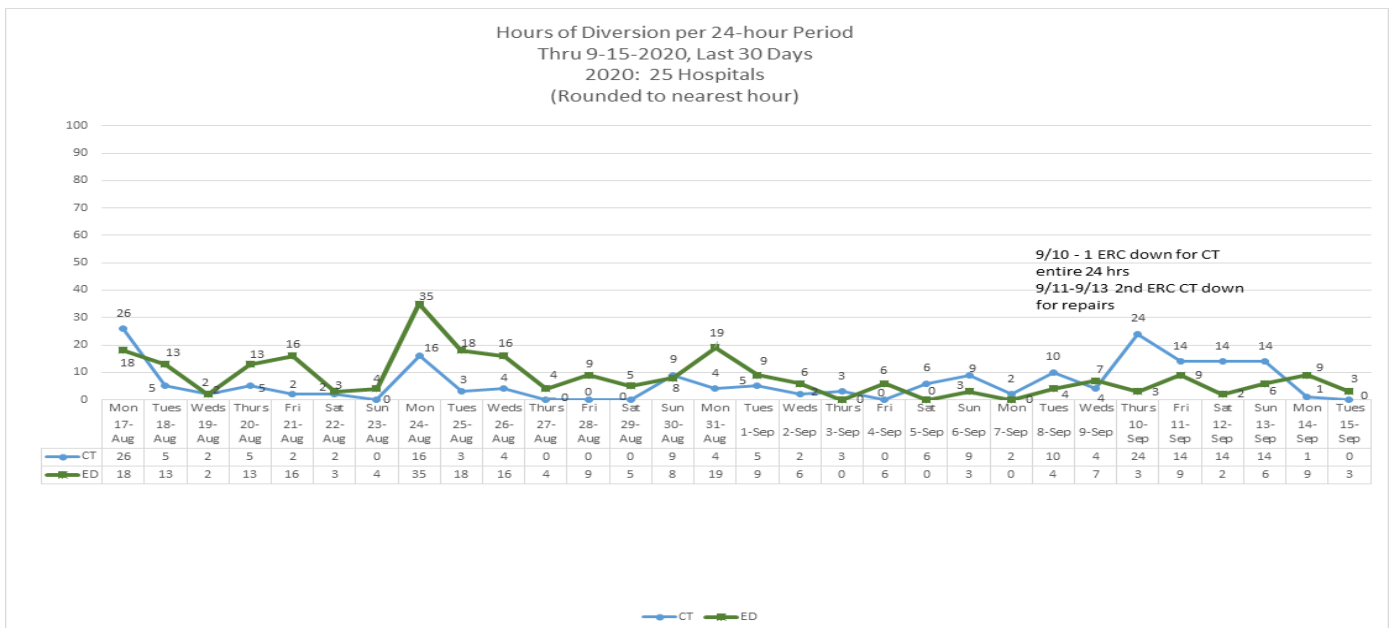
Note: a handful of ERCs were close to the 30 minute threshold, but were not over it.

*Data Source: Orange County Medical Emergency Data System (OC-MEDS)



- Emergency Department (ED) Diversion & Computerized Tomography (CT) (ED closed to all ambulance transport due to no ED capacity or no CT available) for the last 30 days 8/17/20 – 9/15/20 below.**

*Data Source: ReddiNet



**Orange County Emergency Medical Services
Medical Health Operational Area Coordination (MHOAC)**

Online at: <http://www.healthdisasteroc.org/ems/archive>

09/16/20

(26): Anaheim Regional, Anaheim Global, Chapman Global, CHOC, CHOC at Mission, Foothill, Fountain Valley, Garden Grove, Hoag-Irvine, Hoag-Newport Beach, Huntington Beach, Kaiser-Anaheim, Kaiser-Irvine, La Palma, Los Alamitos, Mission –Laguna Beach, Mission-Mission Viejo, Orange Coast Memorial, Orange County Global, Placentia Linda, Saddleback Memorial, Saint Jude, South Coast Global, St. Josephs, UCI, West Anaheim

DATE	ALL HOSPITALS (33)						EMERGENCY RECEIVING CENTERS					
	Census ALL	Occupancy %	COVID+ Hospitalized	COVID+ ICU	% ICU Beds Available	% ICU Ventilators Available	Census ALL	Occupancy %	COVID+ Hospitalized	COVID+ ICU	% ICU Beds Available	% ICU Ventilators Available
8/26	3602	71%	372	112	31%	60%	3438	71%	372	112	31%	60%
8/27	3618	72%	351	98	30%	61%	3452	71%	351	98	30%	61%
8/28	3573	69%	341	99	32%	63%	3408	69%	341	99	32%	63%
8/29	3433	69%	329	99	35%	62%	3265	68%	329	99	35%	62%
8/30	3367	66%	317	98	34%	62%	3200	65%	317	98	34%	62%
8/31	3312	65%	307	93	37%	62%	3156	64%	307	93	37%	62%
9/1	3463	67%	295	89	31%	63%	3297	67%	295	89	31%	63%
9/2	3592	71%	272	79	30%	62%	3415	70%	272	79	30%	62%
9/3	3532	69%	264	77	33%	63%	3350	68%	264	77	33%	63%
9/4	3561	70%	274	83	33%	62%	3384	69%	274	83	33%	62%
9/5	3527	69%	253	77	33%	63%	3357	68%	253	77	33%	63%
9/6	3418	68%	238	75	34%	65%	3248	67%	238	75	34%	65%
9/7	3350	65%	242	70	33%	62%	3194	65%	242	70	33%	62%
9/8	3393	66%	234	62	33%	62%	3237	66%	234	62	33%	62%
9/9	3562	69%	239	64	33%	61%	3404	69%	239	64	33%	61%
9/10	3568	69%	223	65	34%	62%	3393	69%	223	65	34%	62%
9/11	3639	70%	215	65	35%	63%	3457	69%	215	65	35%	63%
9/12	3468	67%	196	58	34%	64%	3287	66%	196	58	34%	63%
9/13	3332	65%	193	56	35%	65%	3155	64%	193	56	35%	65%
9/14	3283	66%	201	67	40%	63%	3123	65%	201	67	40%	63%
9/15	3498	68%	202	67	34%	64%	3337	67%	202	67	34%	64%

*Data Source: California Department of Public Health (CDPH) – Snowflake server

*HHS significantly changed [reporting requirements](#) for hospitals effective 07/22/20.

Current data is posted on the CDPH website at:

<https://public.tableau.com/views/COVID-19HospitalsDashboard/Hospitals?%3Aembed=y&%3AshowVizHome=no>

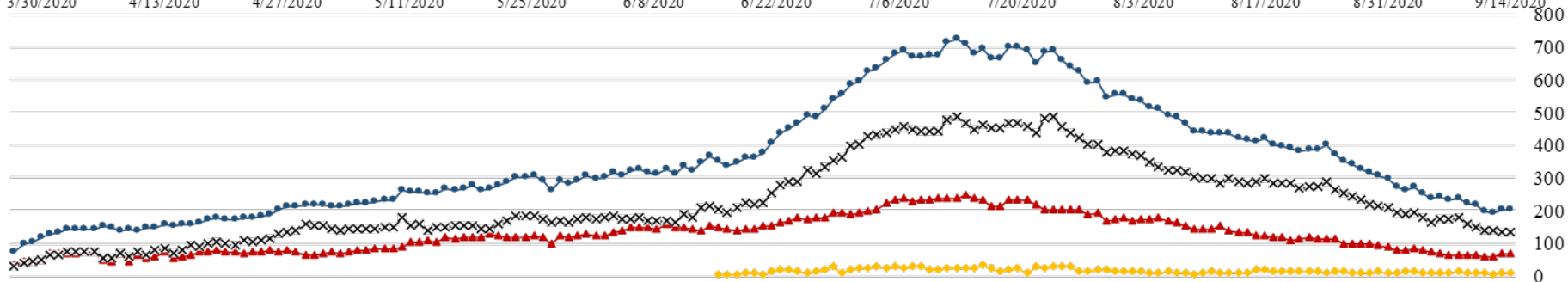
Orange County Emergency Medical Services Medical Health Operational Area Coordination (MHOAC)

Online at: <http://www.healthdisasteroc.org/ems/archive>

09/16/20

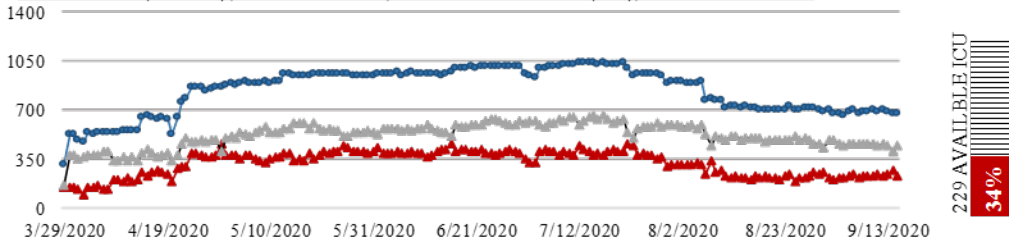
COVID 19 ORANGE COUNTY HOSPITAL SYSTEM DATA (CA SNOWFLAKE SERVER)

NON-ICU - 09/15/20 X			ICU - 09/15/20 ▲			ED OVERFLOW - 09/15/20 ◆			SYSTEM - 09/15/20 ●			1 DAY +/- (09/14/20) ▲			3 DAY +/- (09/13/20) ▲			7 DAY +/- (09/09/20) ▼		
135	1	0.7%	67	0	0.0%	8	1	14.3%	202	1	0.5%	202	1	0.5%	193	9	4.7%	239	-37	-15.5%

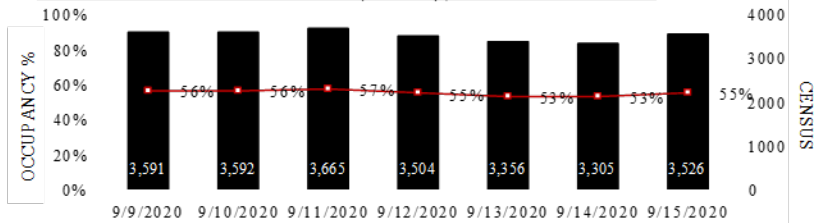


A. Face Covers Mandatory, B. Cinco de Mayo, C. OC Beaches Open, D. Mom's Day, E. OC Parks Parking Open, F. OC Stage 2 Approved, G. Memorial Day, H. Re-open entertainment, etc., I. CA Gov. Mask Mandate, J. Changes to data collection, Federal

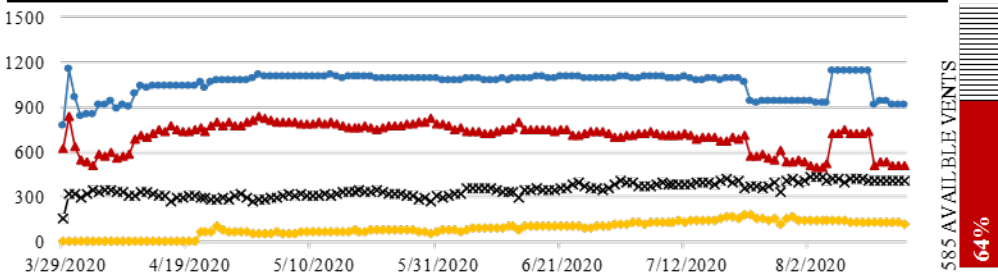
ICU CENSUS - (09/15/20) | ● SYSTEM- 670 | ▲ AVAILABLE- 229 (34%) | X OCCUPIED- 441



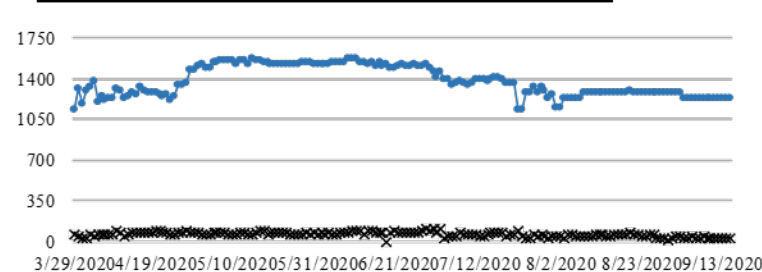
7-DAY HISTORY BED OCCUPANCY - (09/15/20) | IN-PATIENT BEDS- 3526



VENTILATORS - (09/15/20) | ● SYSTEM- 916 | ▲ AVAILABLE- 585 (64%) | X OCCUPIED- 331 | ◆ COVID 37



SURGE CENSUS - (09/15/20) | X OCCUPIED- 28 | ● SYSTEM- 1228

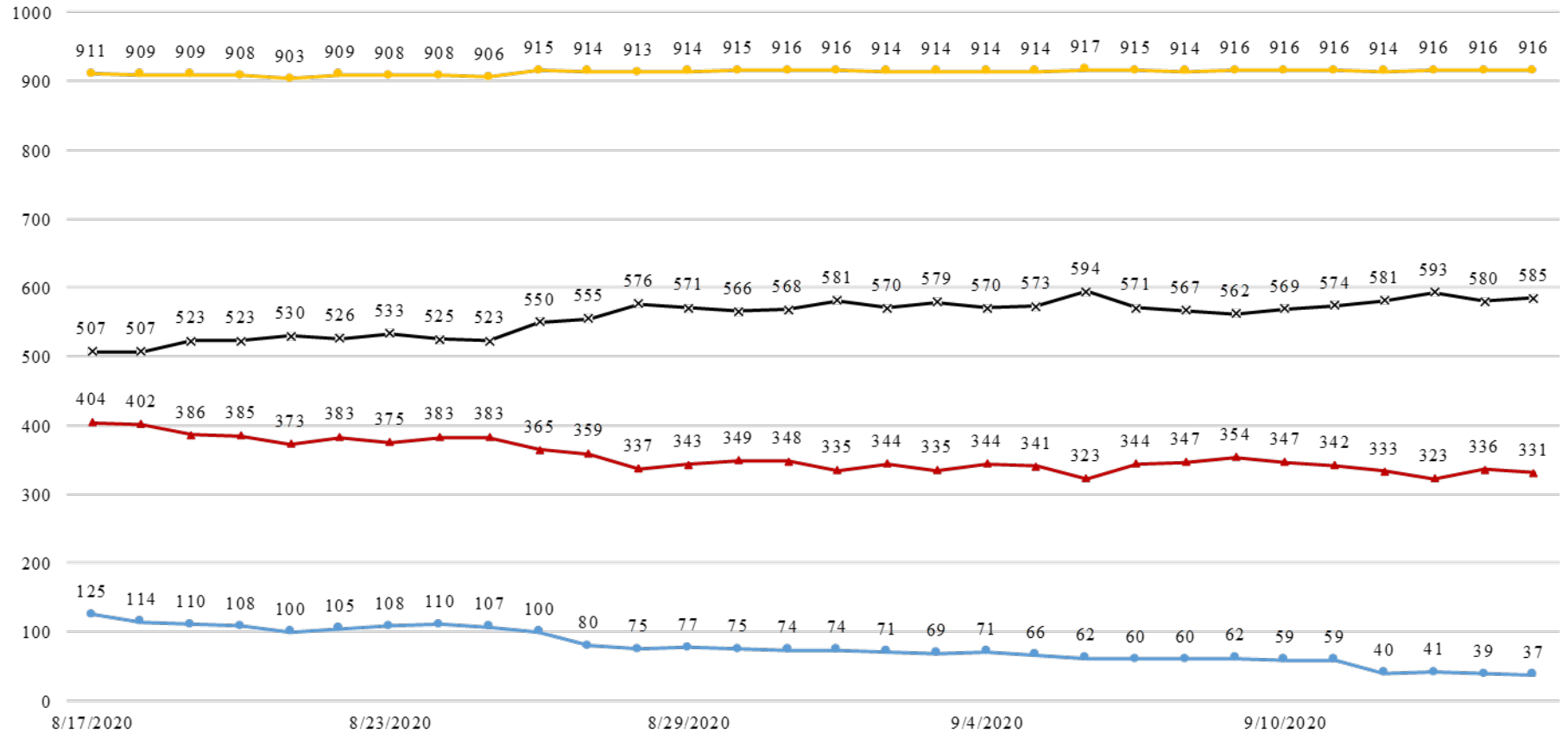


**Orange County Emergency Medical Services
Medical Health Operational Area Coordination (MHOAC)**

Online at: <http://www.healthdisasteroc.org/ems/archive>

09/16/20

COVID 19 ORANGE COUNTY HOSPITAL SYSTEM DATA (CA SNOWFLAKE SERVER)
VENTILATORS IN USE (08/17/20 - 09/15/20) | 33 ACUTE CARE FACILITIES REPORTING



DATE	8/17	8/18	8/19	8/20	8/21	8/22	8/23	8/24	8/25	8/26	8/27	8/28	8/29	8/30	8/31	9/1	9/2	9/3	9/4	9/5	9/6	9/7	9/8	9/9	9/10	9/11	9/12	9/13	9/14	9/15	
COVID+	125	114	110	108	100	105	108	110	107	100	80	75	77	75	74	74	71	69	71	66	62	60	60	62	59	59	40	41	39	37	
SYSTEM OCC	404	402	386	385	373	383	375	383	383	365	359	337	343	349	348	335	344	335	344	341	323	344	347	354	347	342	333	323	336	331	
SYSTEM AVL	507	507	523	523	530	526	533	525	523	550	555	576	571	566	568	581	570	579	570	573	594	571	567	562	569	574	581	593	580	585	
SYSTEM TTL	911	909	909	908	903	909	908	908	906	915	914	913	914	915	916	916	914	914	914	914	917	915	914	916	916	916	916	914	916	916	916

COVID+ = CONFIRMED AND SUSPECTED PATIENTS ON A VENTILATOR

*OCC = VENTILATORS IN USE, INCLUDING COVID+ PATIENTS AND OTHER VENT PATIENTS

**AVL = AVAILABLE NON SURGE ICU BEDS

***TTL = TOTAL NON SURGE ICU BEDS

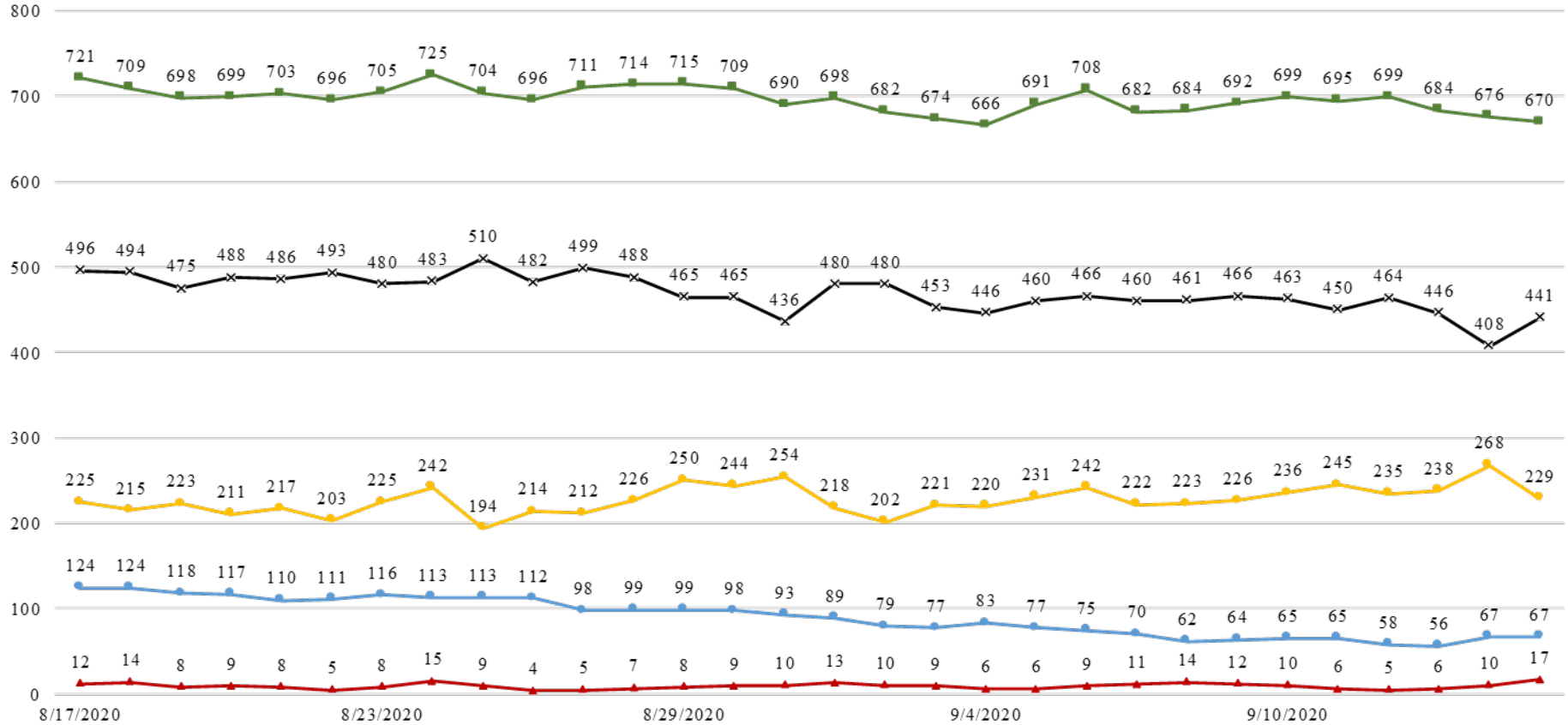
****CDPH updated how PPE and ventilator supplies are counted on 8/13/20.**

**Orange County Emergency Medical Services
Medical Health Operational Area Coordination (MHOAC)**

Online at: <http://www.healthdisasteroc.org/ems/archive>

09/16/20

**COVID 19 ORANGE COUNTY HOSPITAL SYSTEM DATA (CA SNOWFLAKE SERVER)
ICU BEDS (08/17/20 - 09/15/20) | 33 ACUTE CARE FACILITIES REPORTING**



DATE	8/17	8/18	8/19	8/20	8/21	8/22	8/23	8/24	8/25	8/26	8/27	8/28	8/29	8/30	8/31	9/1	9/2	9/3	9/4	9/5	9/6	9/7	9/8	9/9	9/10	9/11	9/12	9/13	9/14	9/15
CONFIRMED	124	124	118	117	110	111	116	113	113	112	98	99	99	98	93	89	79	77	83	77	75	70	62	64	65	65	58	56	67	67
SUSPECTED	12	14	8	9	8	5	8	15	9	4	5	7	8	9	10	13	10	9	6	6	9	11	14	12	10	6	5	6	10	17
OCCUPIED	496	494	475	488	486	493	480	483	510	482	499	488	465	465	436	480	480	453	446	460	466	460	461	466	463	450	464	446	408	441
SYSTEM AVL	225	215	223	211	217	203	225	242	194	214	212	226	250	244	254	218	202	221	220	231	242	222	223	226	236	245	235	238	268	229
SYSTEM TTL	721	709	698	699	703	696	705	725	704	696	711	714	715	709	690	698	682	674	666	691	708	682	684	692	699	695	699	684	676	670

*AVL = AVAILABLE NON SURGE ICU BEDS. PRIOR TO 7/22 DEFINITION DID NOT EXCLUDE NONSURGE.

**TTL = TOTAL NON SURGE ICU BEDS. PRIOR TO 7/22 DEFINITION DID NOT EXCLUDE NONSURGE.

**Orange County Emergency Medical Services
Medical Health Operational Area Coordination (MHOAC)**

Online at: <http://www.healthdisasteroc.org/ems/archive>

09/16/20

- *Data Source: California Department of Public Health (CDPH) – Snowflake server
- *HHS significantly changed [reporting requirements](#) for hospitals effective 07/22/20.
- **CDPH updated how PPE and ventilator supplies are counted on 8/13/20. Count of PAPRs are no longer available. This table has been updated based on data provided by hospitals using the new HHS data standards

Reporting Date: 9/15/20* (33/33 ACHs reported)	Acute Care Hospital PPE / Ventilator Supplies – DAYS ON HAND					
	30 days +	15-30 days	7-14 days	4-6 days	0-3 days	Not Reported
Ventilator Supplies**	2	5	13	1	1	11
N95 Masks**	14	7	4	2	0	6
Surgical Masks**	13	6	7	1	0	6
Face Shields**	13	4	8	0	1	7
Gloves**	7	11	7	3	0	5
Gowns**	11	8	6	2	0	6

*Data Source: ReddiNet

Reported Service Category Status Acute Care Hospitals w/ Emergency Departments (#25) Updated 9/16/20		
Status Item	Yes	%
Command Center Activated	12	48%
Surge Plan Activated	13	52%
Canceled Procedures/Services	3	12%
Supply Issues	7	28%
CDPH Flex	12	48%
Increased Morgue Capacity	15	60%

AGENCY OPERATIONS CENTER / LOGISTICS SECTION

- AOC Activated at Level II; Hours of Operation Mon & Thurs 0900-1600; Warehouse Ops M-F 0900-1600
- SCARCE Resources: Gloves, Wipes

Total Activity – Updated 09/14/20		
INQUIRIES	RR RECEIVED	RR FILLED
14,582 +26	7,896 + 32	6,096 +34
Total Denied Requests: 700 / Total Redacted Requests: 448		

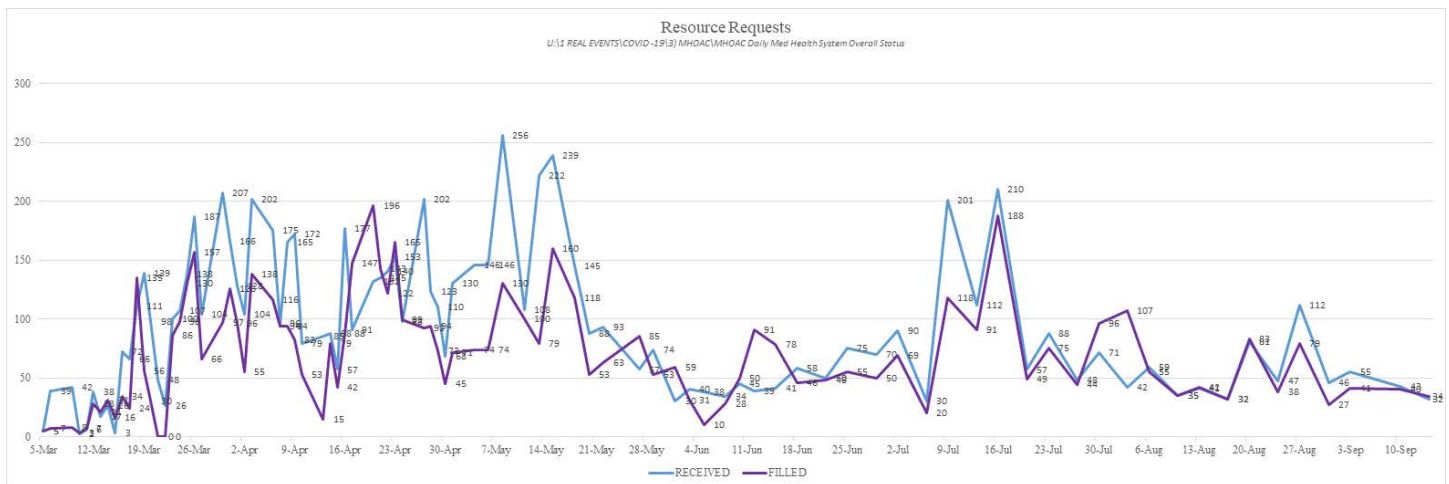
**Orange County Emergency Medical Services
Medical Health Operational Area Coordination (MHOAC)**

Online at: <http://www.healthdisasteroc.org/ems/archive>

09/16/20

Logistics Daily Units Distributed 09-14-20	
N95 Mask	5,220
Surgical Mask	5,150
Gown	9,500
Gloves	19,000
Face Shields/Eye Protection	100
Hand Sanitizer	0
Other	3
Total Units	38,973

Inventory Report February 18 to September 15, 2020	
Medical Supply/Equipment Total Units Distributed	
N95 Mask	4,574,650
Surgical Mask	1,436,305
Gowns	1,610,076
PPE-Suit	17,955
Gloves	2,320,150
Eye Protection	288,551
Hand Sanitizer	305,649
Other Items	832,868
Total Units	11,386,204



ALTERNATE CARE SITE

*Site open indefinitely to support hospital/SNF decompression

*Data Source: ReddiNet

Fairview (COVID-19 +)		
Patient Census (as of 9/16/2020 07:30)	CURRENT	TOTAL
Orange County	5	76
Los Angeles County	3	35
San Diego County	1	1
Ventura County	1	2
Total patients CENSUS / TOTAL ACCEPTED	10	114
Patients Discharged		TOTAL
AMA		5
DISCHARGED		99
TRANSFERRED		0