

**Orange County Emergency Medical Services
Medical Health Operational Area Coordination (MHOAC)**
Online at: <http://www.healthdisasteroc.org/ems/archive>
11/18/20

OVERVIEW OF CURRENT SITUATION (11/18/20 1030) Source: Johns Hopkins University & Medicine <https://coronavirus.jhu.edu/map.html>

Cases / Deaths
 Worldwide: 55,946,862 / 1,344,557
 Nationwide: 11,419,204 / 249,430
 California: 1,056,687 / 18,384
 Orange Co: 66,585 / 1,528 Source: [Orange County COVID-19 Case Counts & Testing Figures](#)

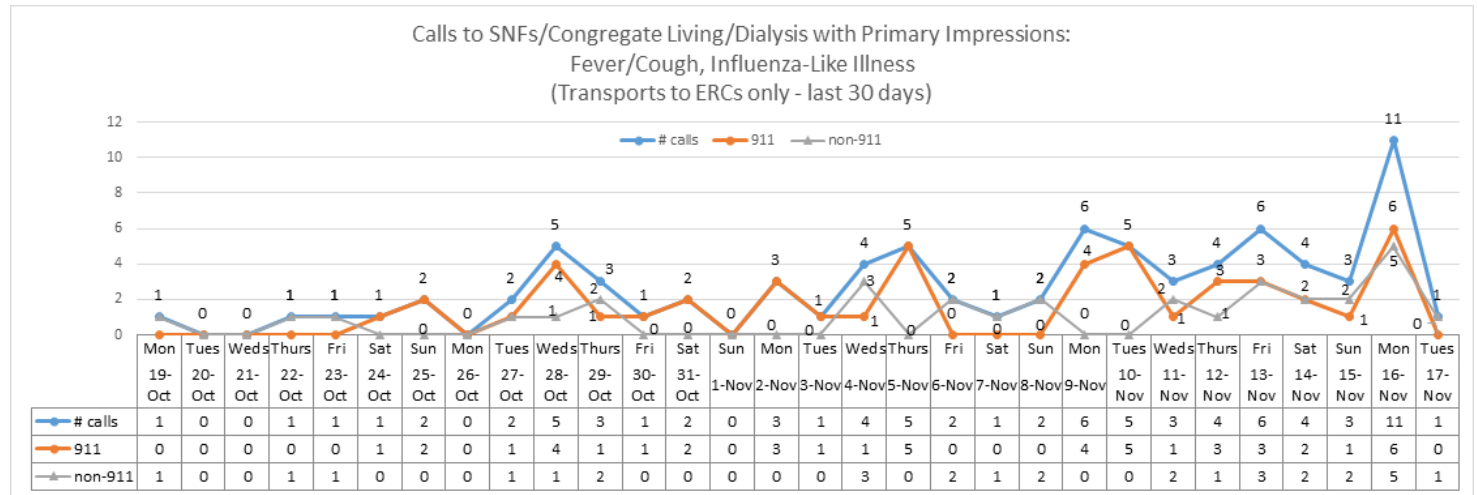
ORANGE COUNTY PUBLIC HEALTH (as of 11/18/20 1000)

Orange County COVID-19 Summary* click for full details	Sat 11/14/20	Sun 11/15/20	Mon 11/16/20	Tue 11/17/20	Wed 11/18/20	Thu 11/19/20	Fri 11/20/20
Cases Reported to Date	64,586	65,225	65,605	65,957	66,585		
Deaths Reported to Date	1,524	1,526	1,526	1,526	1,528		
Tests Reported Today	12,871	7,896	4,848	14,903	8,753		
Cumulative Tests to Date	1,242,434	1,250,330	1,255,178	1,255,178	1,278,834		

Data posted is always preliminary & subject to change. More information may become available as individual case investigations are completed. **LOCAL DATA MAY BE DIFFERENT FROM THE STATE WEBSITE DATA*

SKILLED NURSING/ASSISTED LIVING/RESIDENTIAL CARE FACILITY – TRENDS

*Data Source: Orange County Medical Emergency Data System (OC-MEDS)



*Data Source: California Department of Public Health (CDPH)

Reporting Date: 11/18/20 (72/73 SNFs reported)	Skilled Nursing Facility PPE – DAYS ON HAND*			
	0 - 3 days	4 - 7 days	8-14 days	15+ days
N95 Masks	0	3	15	54
Surgical Masks	0	3	11	58
Eye Protection	0	2	12	58
Gowns	0	2	11	59
Gloves	0	4	15	53
Alcohol-Based Hand Sanitizer	0	3	15	54

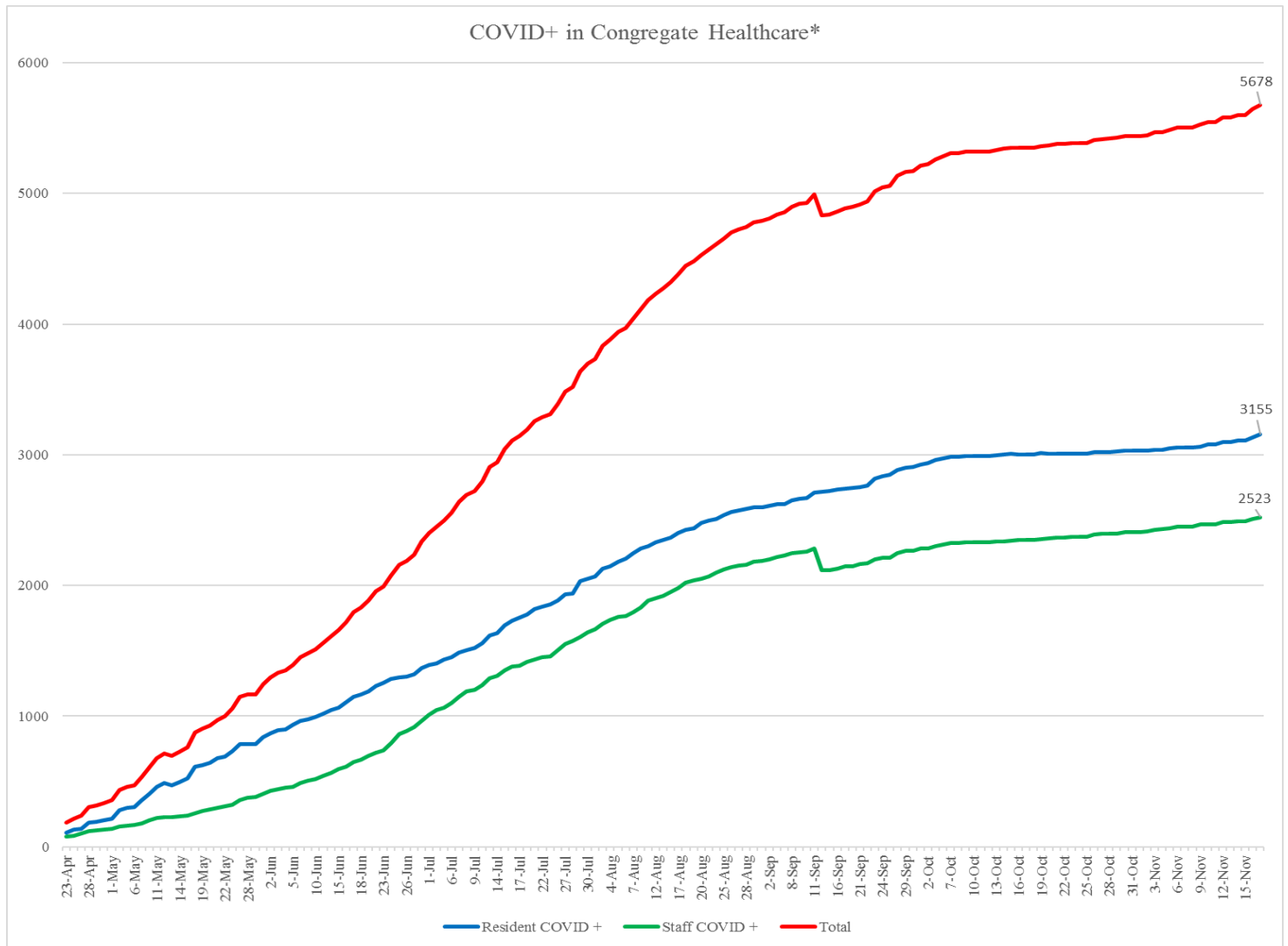
**Orange County Emergency Medical Services
Medical Health Operational Area Coordination (MHOAC)**

Online at: <http://www.healthdisasteroc.org/ems/archive>

11/18/20

*Data Source: Orange County Health Care Agency – Public Health

****NOTE**:** Decrease in the COVID + in staff seen on graph is due to data being cleaned and removing duplicates of those that work in multiple OC facilities or are contract staff and care for residents at multiple facilities.



*Data Source: Orange County Health Care Agency – Public Health

Current Facility Outbreaks (as of 11/17/20 1700)

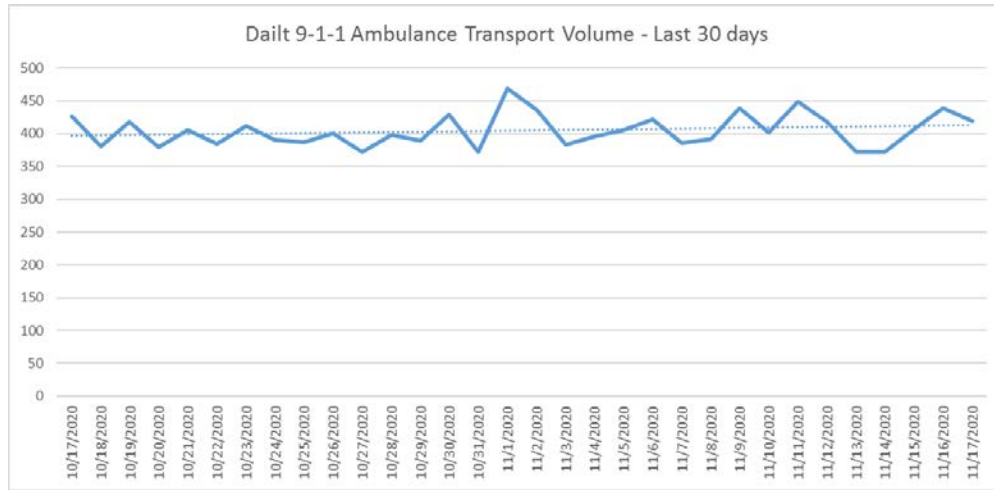
Facility Type by Licensing Category	#	An "Outbreak" is two (2) or more confirmed cases of COVID-19 in facility occurring within 14 days.
Skilled Nursing Facility	5	Advanced Rehab Center Of Tustin, Buena Park Nursing Center, Coventry Court Health Center, Harbor Villa Care Center, Parkview Healthcare Center
Elderly Assisted Living	11	Brookdale Irvine, Brookdale San Juan Capistrano (Alf), Ck Homes/Neptune, Corinthian Villas 1, Cottages At, Artesia Gardens, The, Meadowlark Gardens Ii, Regency, The, Regents Point (Alf), San Clemente Villas By The Sea, Sunrise Of Huntington Beach, Sunrise Villa Bradford

**Orange County Emergency Medical Services
Medical Health Operational Area Coordination (MHOAC)**
Online at: <http://www.healthdisasteroc.org/ems/archive>
11/18/20

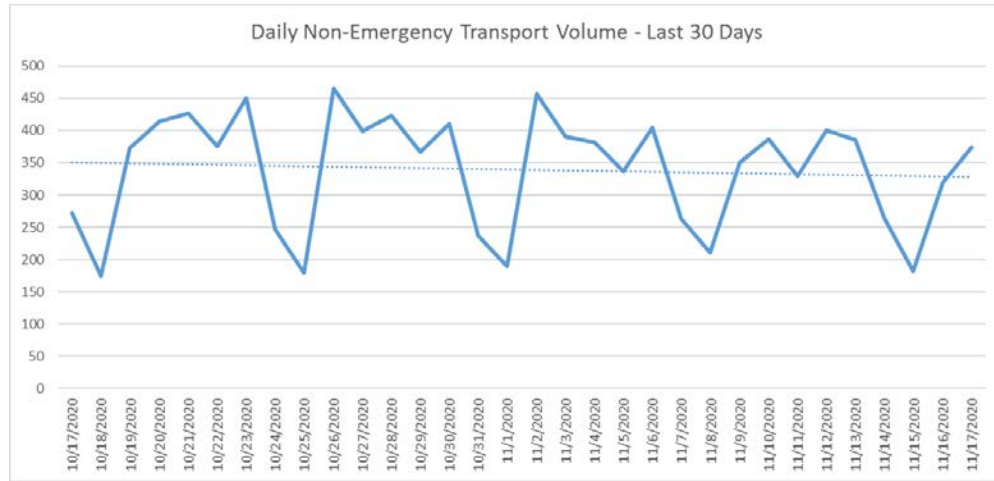
EMERGENCY MEDICAL SERVICES STATUS

*Data Source: Orange County Medical Emergency Data System (OC-MEDS)

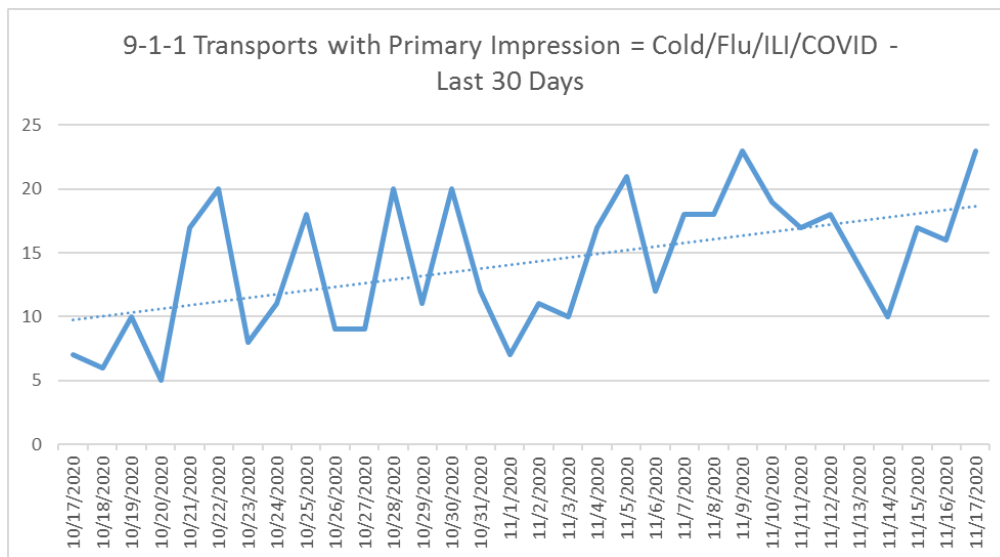
- 9-1-1 ambulance transport volume have been gradually increasing and are about 5-10% below normal (pre-COVID) levels overall.



- Non-emergency ambulance transports have decreased and are now averaging about 15-20% below normal (pre-COVID) levels.



- Primary Impressions of Cold/Flu/ILI by 9-1-1 EMS providers have been trending higher over the last 30 days.



**Orange County Emergency Medical Services
Medical Health Operational Area Coordination (MHOAC)**

Online at: <http://www.healthdisasteroc.org/ems/archive>

11/18/20

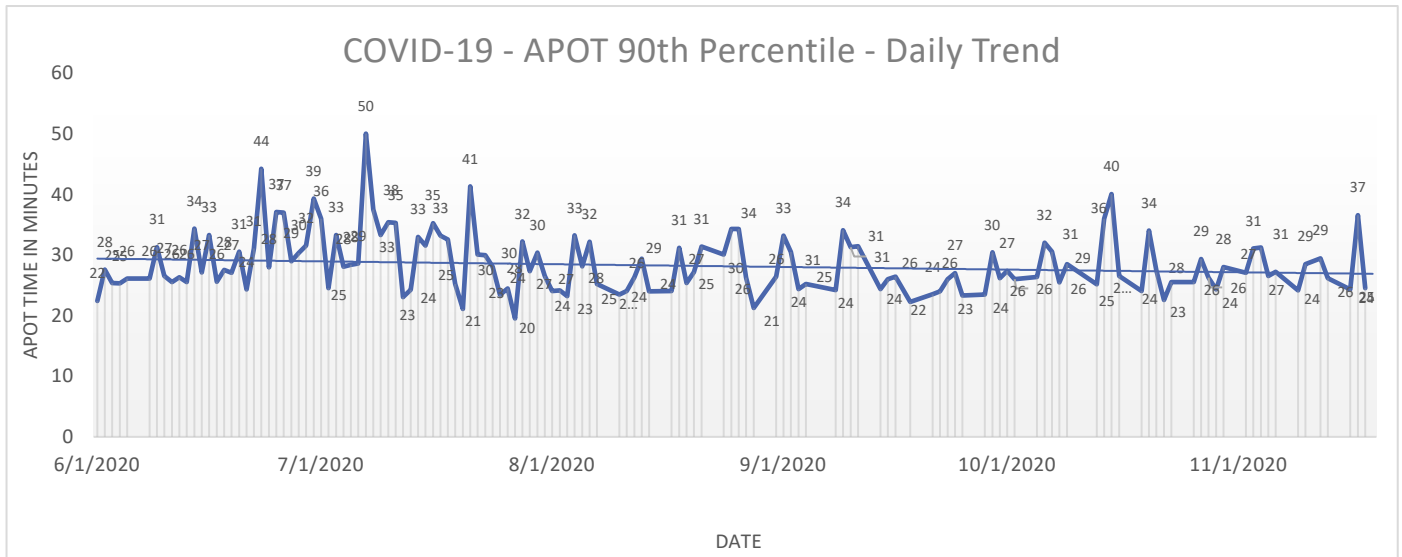
- Ambulance Patient Offload Time (APOT) is defined as the time the ambulance arrives at the receiving destination (wheels stop) to the time that the ambulance crew physically transfers the patient to the ED gurney. Last 24 hours: **Current Average APOT is: 12m54s / Current 90th Percentile APOT is: 24m57s**

The chart below displays a daily trend since June 1, 2020.

- Seven (7) ERCs had APOT times greater than thirty (30) minutes.
- One (1) ERC had APOT times greater than sixty (60) minutes.

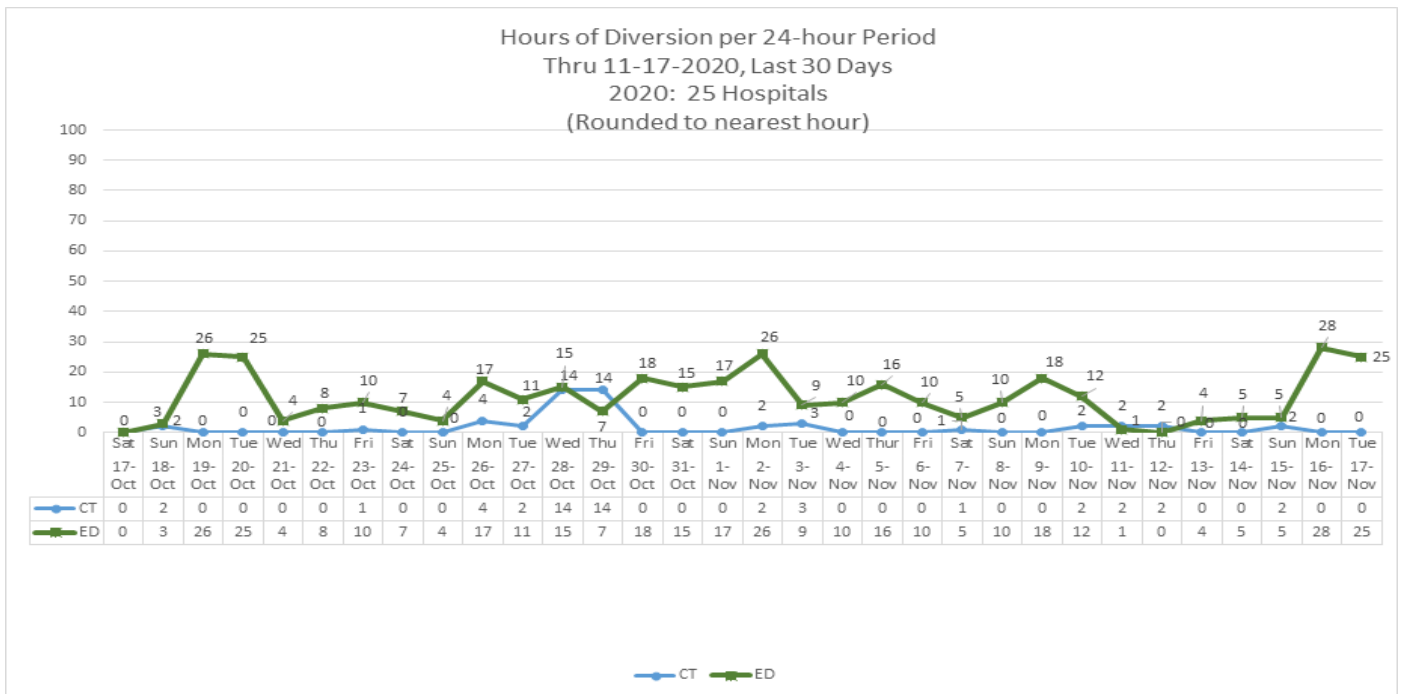
Note: a handful of ERCs were close to the 30 minute threshold, but were not over it.

*Data Source: Orange County Medical Emergency Data System (OC-MEDS)



- **Emergency Department (ED) Diversion & Computerized Tomography (CT) (ED closed to all ambulance transport due to no ED capacity or no CT available) for the last 30 days 10/17/20 – 11/17/20 below.**

*Data Source: ReddiNet



**Orange County Emergency Medical Services
Medical Health Operational Area Coordination (MHOAC)**

Online at: <http://www.healthdisasteroc.org/ems/archive>

11/18/20

(26): Anaheim Regional, Anaheim Global, Chapman Global, CHOC, CHOC at Mission, Foothill, Fountain Valley, Garden Grove, Hoag-Irvine, Hoag-Newport Beach, Huntington Beach, Kaiser-Anaheim, Kaiser-Irvine, La Palma, Los Alamitos, Mission –Laguna Beach, Mission-Mission Viejo, Orange Coast Memorial, Orange County Global, Placentia Linda, Saddleback Memorial, Saint Jude, South Coast Global, St. Josephs, UCI, West Anaheim

DATE	ALL HOSPITALS (33)						EMERGENCY RECEIVING CENTERS					
	Census ALL	Occupancy %	COVID+ Hospitalized	COVID+ ICU	% ICU Beds Available	% ICU Ventilators Available	Census ALL	Occupancy %	COVID+ Hospitalized	COVID+ ICU	% ICU Beds Available	% ICU Ventilators Available
10/27	3507	66%	177	60	34%	68%	3351	65%	177	60	34%	10/27
10/28	3540	66%	181	59	35%	66%	3365	66%	181	59	35%	66%
10/29	3562	66%	182	61	36%	67%	3389	66%	182	61	36%	67%
10/30	3571	67%	188	58	33%	67%	3393	66%	188	58	33%	67%
10/31	3450	65%	181	55	35%	67%	3281	64%	181	55	35%	67%
11/1	3331	63%	183	60	37%	66%	3157	62%	183	60	37%	66%
11/2	3300	63%	177	60	37%	65%	3131	62%	177	60	37%	65%
11/3	3562	66%	182	78	32%	64%	3393	66%	182	78	32%	64%
11/4	3620	67%	178	76	35%	64%	3451	67%	178	76	35%	64%
11/5	3572	67%	177	72	38%	64%	3399	66%	177	72	38%	64%
11/6	3542	66%	199	72	36%	64%	3374	65%	199	72	36%	64%
11/7	3638	67%	201	72	36%	65%	3465	66%	201	72	36%	65%
11/8	3493	65%	205	76	37%	65%	3320	64%	205	76	37%	64%
11/9	3367	64%	224	79	36%	64%	3211	63%	224	79	36%	63%
11/10	3638	67%	244	83	35%	63%	3482	66%	244	83	35%	63%
11/11	3668	68%	251	89	35%	64%	3503	67%	251	89	35%	64%
11/12	3705	69%	244	95	34%	64%	3541	68%	244	95	34%	64%
11/13	3644	67%	235	90	34%	65%	3474	67%	235	90	34%	64%
11/14	3459	64%	242	90	36%	65%	3277	63%	242	90	36%	65%
11/15	3380	63%	257	85	36%	65%	3213	63%	257	85	36%	65%
11/16	3350	63%	270	79	36%	64%	3193	62%	270	79	36%	64%
11/17	3654	67%	291	90	33%	65%	3495	67%	291	90	33%	65%

*Data Source: California Department of Public Health (CDPH) – Snowflake server

*HHS significantly changed [reporting requirements](#) for hospitals effective 07/22/20.

Current data is posted on the CDPH website at:

<https://public.tableau.com/views/COVID-19HospitalsDashboard/Hospitals?%3Aembed=y&%3AshowVizHome=no>

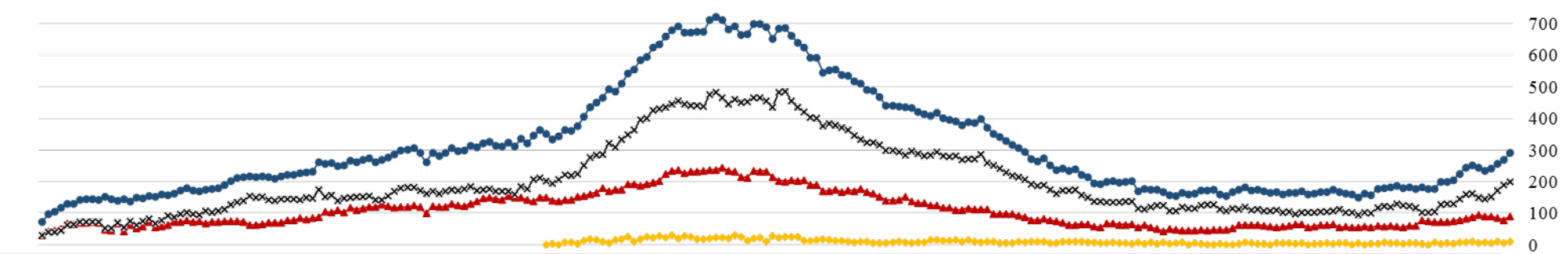
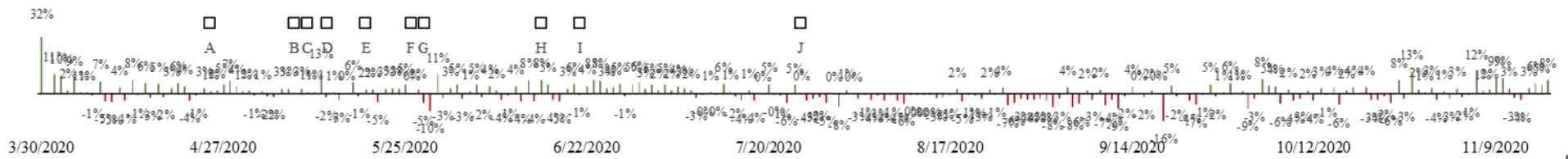
Orange County Emergency Medical Services Medical Health Operational Area Coordination (MHOAC)

Online at: <http://www.healthdisasteroc.org/ems/archive>

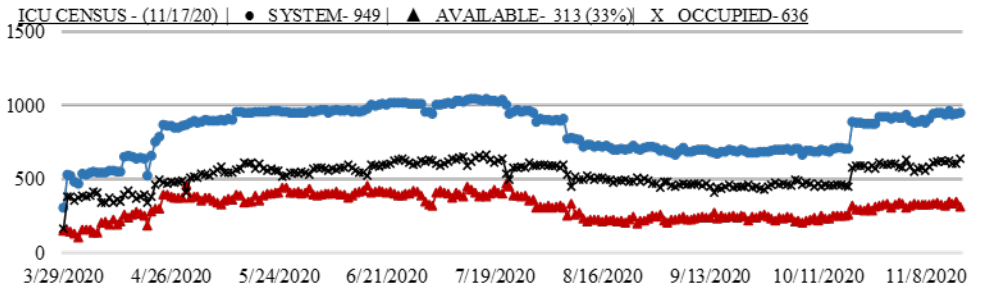
11/18/20

COVID 19 ORANGE COUNTY HOSPITAL SYSTEM DATA (CA SNOWFLAKE SERVER)

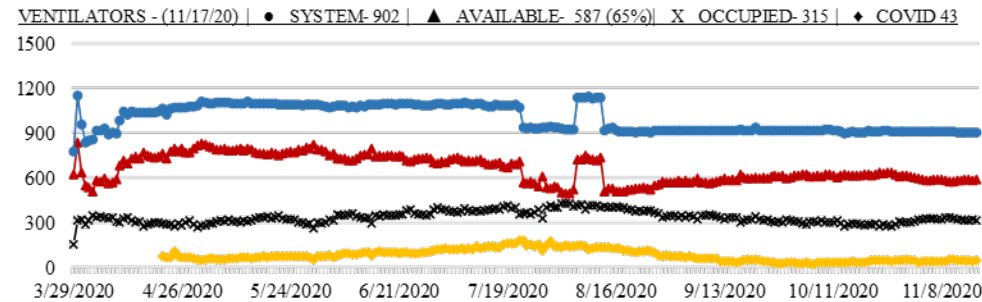
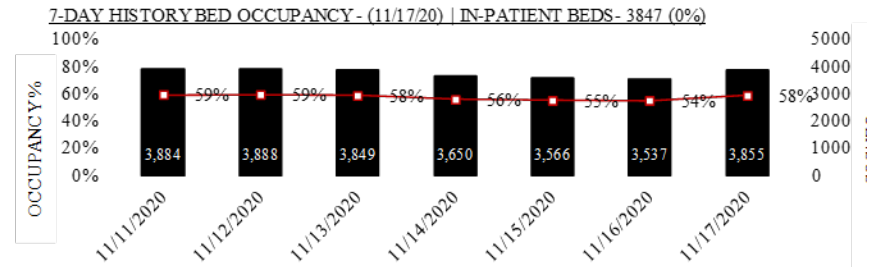
NON-ICU - 11/17/20 X			ICU - 11/17/20 ▲			ED OVERFLOW - 11/17/20 ◆			SYSTEM - 11/17/20 ●			1 DAY +/- (11/16/20)			3 DAY +/- (11/15/20)			7 DAY +/- (11/11/20)		
201	10	5.2%	90	11	13.9%	11	4	57.1%	291	21	7.8%	291	21	7.8%	257	34	13.2%	251	40	15.9%
▲			▲			▲			▲			▲			▲					



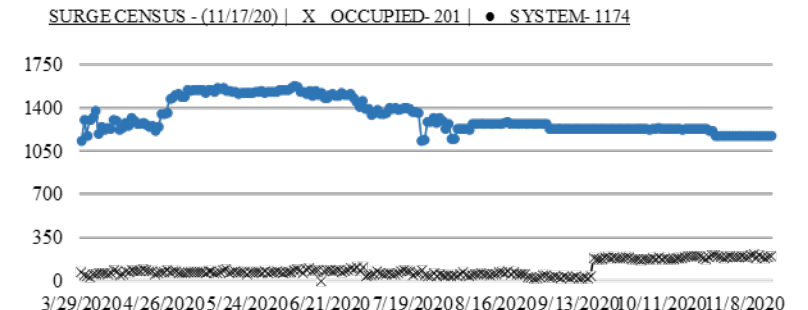
A. Face Covers Mandatory, B. Cinco de Mayo, C. OC Beaches Open, D. Mom's Day, E. OC Parks Parking Open, F. OC Stage 2 Approved, G. Memorial Day, H. Re-open entertainment, etc., I. CA Gov. Mask Mandate, J. Changes to data collection, Federal direction



313 AVAILABLE ICU
33%



587 AVAILABLE VENTS
65%

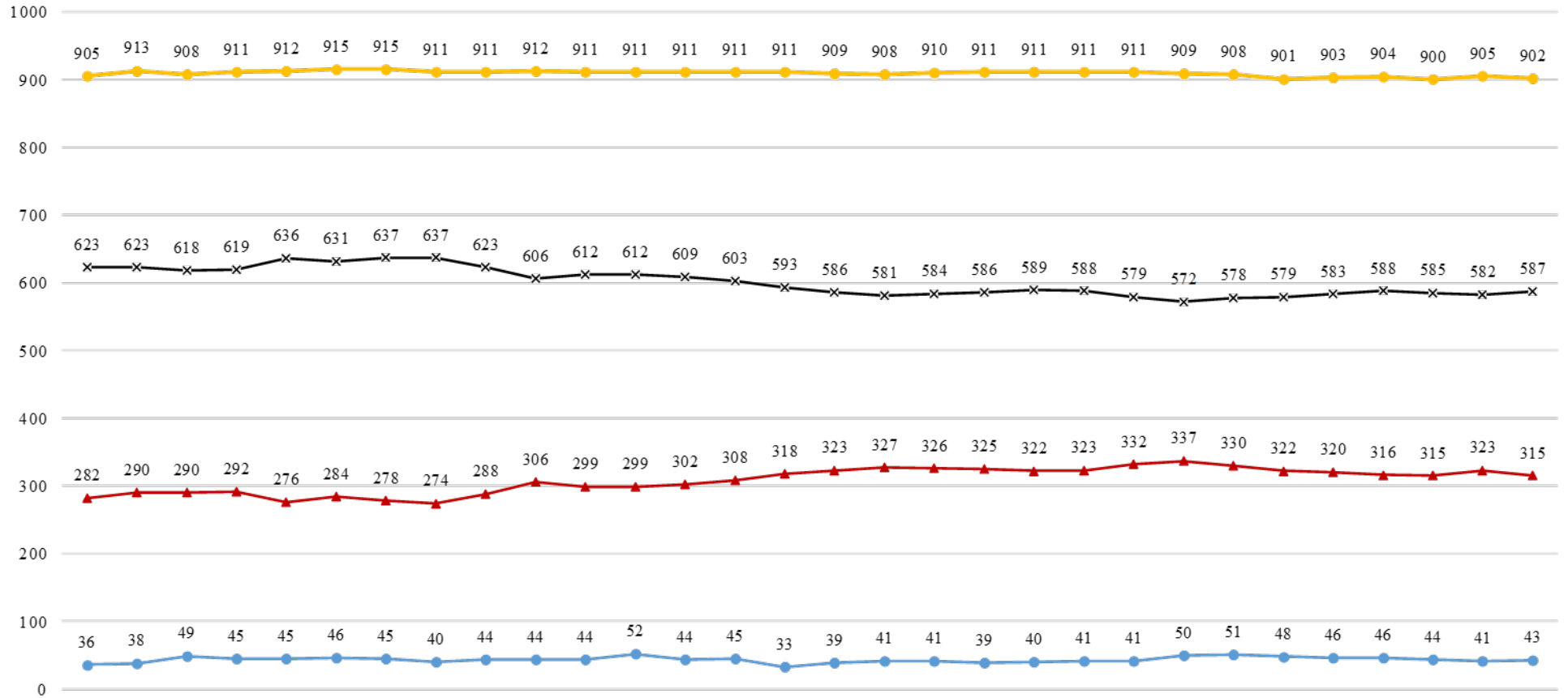


**Orange County Emergency Medical Services
Medical Health Operational Area Coordination (MHOAC)**

Online at: <http://www.healthdisasteroc.org/ems/archive>

11/18/20

COVID 19 ORANGE COUNTY HOSPITAL SYSTEM DATA (CA SNOWFLAKE SERVER) VENTILATORS IN USE (10/19/20 - 11/17/20) | 33 ACUTE CARE FACILITIES REPORTING



DATE	10/19	10/20	10/21	10/22	10/23	10/24	10/25	10/26	10/27	10/28	10/29	10/30	10/31	11/1	11/2	11/3	11/4	11/5	11/6	11/7	11/8	11/9	11/10	11/11	11/12	11/13	11/14	11/15	11/16	11/17
COVID+ ●	36	38	49	45	45	46	45	40	44	44	44	52	44	45	33	39	41	41	39	40	41	41	50	51	48	46	46	44	41	43
SYSTEM OCC ▲	282	290	290	292	276	284	278	274	288	306	299	299	302	308	318	323	327	326	325	322	323	332	337	330	322	320	316	315	323	315
SYSTEM AVL ✕	623	623	618	619	636	631	637	637	623	606	612	612	609	603	593	586	581	584	586	589	588	579	572	578	579	583	588	585	582	587
SYSTEM TTL ◆	905	913	908	911	912	915	915	911	911	912	911	911	911	911	911	909	908	910	911	911	911	911	909	908	901	903	904	900	905	902

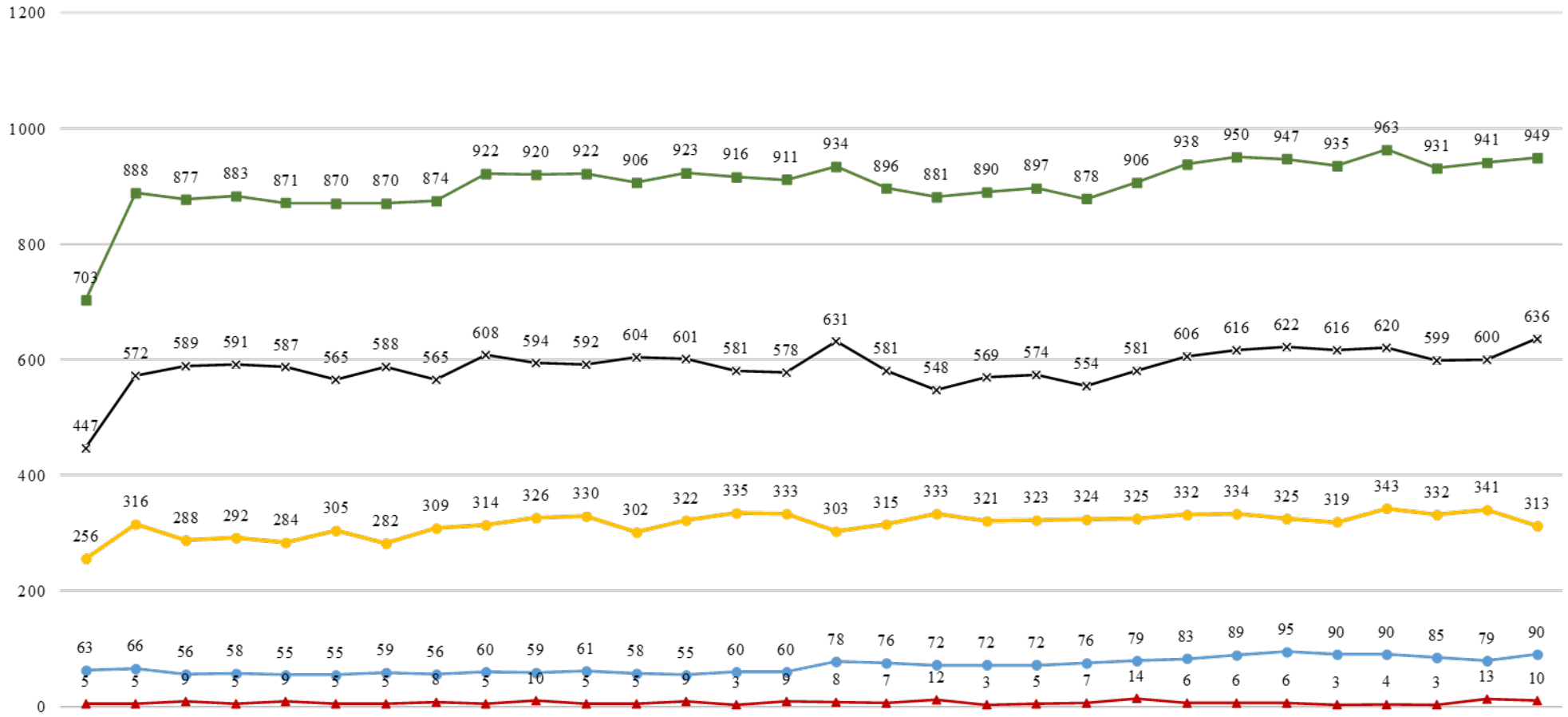
COVID+ = CONFIRMED AND SUSPECTED PATIENTS ON A VENTILATOR
 *OCC = VENTILATORS IN USE, INCLUDING COVID+ PATIENTS AND OTHER VENT PATIENTS
 **AVL = AVAILABLE NON SURGE ICU BEDS
 ***TTL = TOTAL NON SURGE ICU BEDS

**Orange County Emergency Medical Services
Medical Health Operational Area Coordination (MHOAC)**

Online at: <http://www.healthdisasteroc.org/ems/archive>

11/18/20

COVID 19 ORANGE COUNTY HOSPITAL SYSTEM DATA (CA SNOWFLAKE SERVER) ICU BEDS (10/19/20 - 11/17/20) | 33 ACUTE CARE FACILITIES REPORTING



DATE	10/19	10/20	10/21	10/22	10/23	10/24	10/25	10/26	10/27	10/28	10/29	10/30	10/31	11/1	11/2	11/3	11/4	11/5	11/6	11/7	11/8	11/9	11/10	11/11	11/12	11/13	11/14	11/15	11/16	11/17
CONFIRMED	63	66	56	58	55	55	59	56	60	59	61	58	55	60	60	78	76	72	72	72	76	79	83	89	95	90	90	85	79	90
SUSPECTED	5	5	9	5	9	5	5	8	5	10	5	5	9	3	9	8	7	12	3	5	7	14	6	6	6	3	4	3	13	10
OCCUPIED	447	572	589	591	587	565	588	565	608	594	592	604	601	581	578	631	581	548	569	574	554	581	606	616	622	616	620	599	600	636
SYSTEM AVL	256	316	288	292	284	305	282	309	314	326	330	302	322	335	333	303	315	333	321	323	324	325	332	334	325	319	343	332	341	313
SYSTEM TTL	703	888	877	883	871	870	870	874	922	920	922	906	923	916	911	934	896	881	890	897	878	906	938	950	947	935	963	931	941	949

*AVL = AVAILABLE NON SURGE ICU BEDS. PRIOR TO 7/22 DEFINITION DID NOT EXCLUDE NONSURGE.
 **TTL = TOTAL NON SURGE ICU BEDS. PRIOR TO 7/22 DEFINITION DID NOT EXCLUDE NONSURGE.
 *** AS OF 10/20/2020 SPIKE IN SYSTEM TTL, OCCUPIED AND AVAILABLE DUE TO CHANGE IN CHOC ORANGE REPORTED VALUES.

**Orange County Emergency Medical Services
Medical Health Operational Area Coordination (MHOAC)**

Online at: <http://www.healthdisasteroc.org/ems/archive>

11/18/20

- *Data Source: California Department of Public Health (CDPH) – Snowflake server
- *HHS significantly changed [reporting requirements](#) for hospitals effective 07/22/20.
- **CDPH updated how PPE and ventilator supplies are counted on 8/13/20. Count of PAPRs are no longer available. This table has been updated based on data provided by hospitals using the new HHS data standards

Reporting Date: 11/17/20* (33/33 ACHs reported)	Acute Care Hospital PPE / Ventilator Supplies – DAYS ON HAND					
	30 days +	15-30 days	7-14 days	4-6 days	0-3 days	Not Reported
Ventilator Supplies**	3	6	13	2	2	7
N95 Masks**	17	8	2	1	0	5
Surgical Masks**	16	7	4	1	0	5
Face Shields**	16	6	5	0	1	5
Gloves**	12	4	9	2	1	5
Gowns**	12	9	5	2	0	5

*Data Source: ReddiNet

Reported Service Category Status Acute Care Hospitals w/ Emergency Departments (#25) Updated 11/18/20 **NOTE**: 19 of 25 EDs Responded		
Status Item	Yes	%
Command Center Activated	13	52%
Surge Plan Activated	11	44%
Canceled Procedures/Services	1	4%
Supply Issues	3	12%
CDPH Flex	6	24%
Increased Morgue Capacity	14	56%

AGENCY OPERATIONS CENTER / LOGISTICS SECTION

- The AOC is activated weekly at Level II on Mondays only - 0900-1600; Warehouse Ops are M-F - 0900-1600.
- SCARCE Resources: Gloves, Wipes

Total Activity – Updated 11/16/20		
INQUIRIES	RR RECEIVED	RR FILLED
15,210 +170	8,476 + 98	6,718 +99
Total Denied Requests: 733 / Total Redacted Requests: 766		

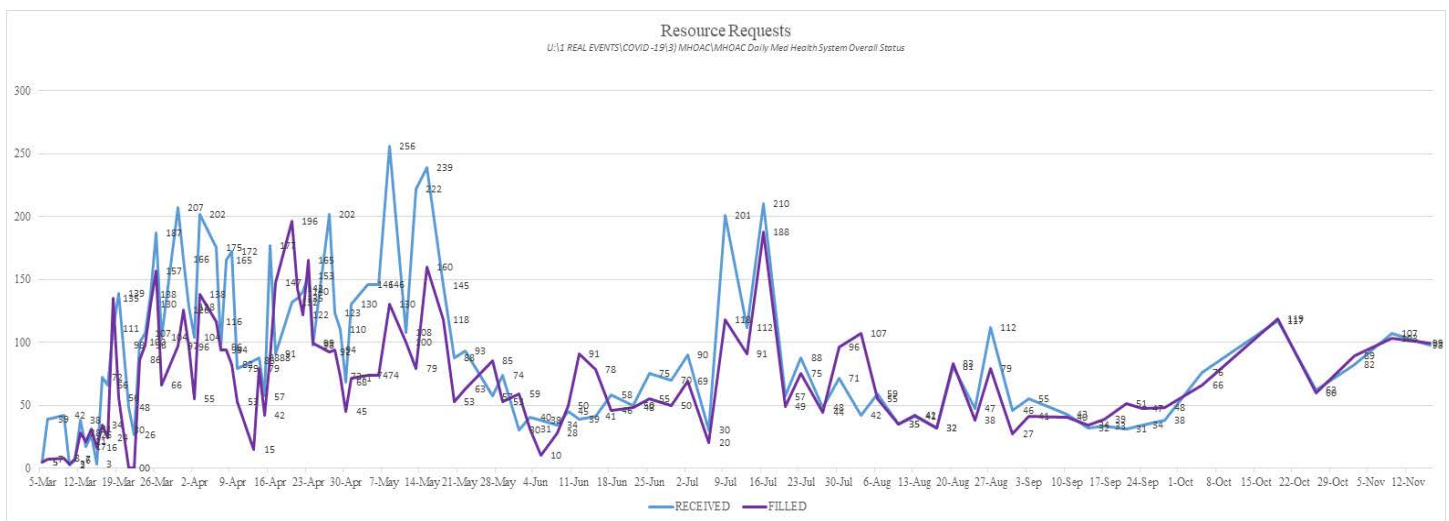
**Orange County Emergency Medical Services
Medical Health Operational Area Coordination (MHOAC)**

Online at: <http://www.healthdisasteroc.org/ems/archive>

11/18/20

Logistics Daily Units Distributed 11-16-20	
N95 Mask	33,880
Surgical Mask	64,900
Gown	13,550
Gloves	153,100
Face Shields/Eye Protection	5,775
Hand Sanitizer	1,400
Other	40,795
Total Units	313,400

Inventory Report February 18 to November 16, 2020	
Medical Supply/Equipment Total Units Distributed	
N95 Mask	4,808,830
Surgical Mask	1,783,705
Gowns	1,727,606
PPE-Suit	17,955
Gloves	3,193,250
Eye Protection	325,282
Hand Sanitizer	308,207
Other Items	1,107,595
Total Units	13,272,430



ALTERNATE CARE SITE

*Site had a “warm” closure on September 30, 2020. A warm closure allows the ACS to be maintained in a semi-ready state. Appropriate resources will be kept at the ACS to enable the site to reopen within 72 hours if the need should arise.

*Data Source: ReddiNet

Fairview (COVID-19 +)		
Patient Census (as of 9/30/2020 07:30)	CURRENT	TOTAL
Orange County	0	76
Los Angeles County	0	36
San Diego County	0	1
Ventura County	0	2
Total patients CENSUS / TOTAL ACCEPTED	0	115
Patients Discharged		TOTAL
AMA		5
DISCHARGED		110
TRANSFERRED		0