

**OVERVIEW OF CURRENT SITUATION (1/21/21 1121)** Source: Johns Hopkins University & Medicine <https://coronavirus.jhu.edu/map.html>

Cases / Deaths  
 Worldwide: 97,268,568 / 2,084,012  
 Nationwide: 24,538,028 / 408,011  
 California: 3,079,718 / 35,082  
 Orange Co: 217,849 / 2,546 Source: [Orange County COVID-19 Case Counts & Testing Figures](#)

**ORANGE COUNTY PUBLIC HEALTH (as of 1/21/21 1200)**

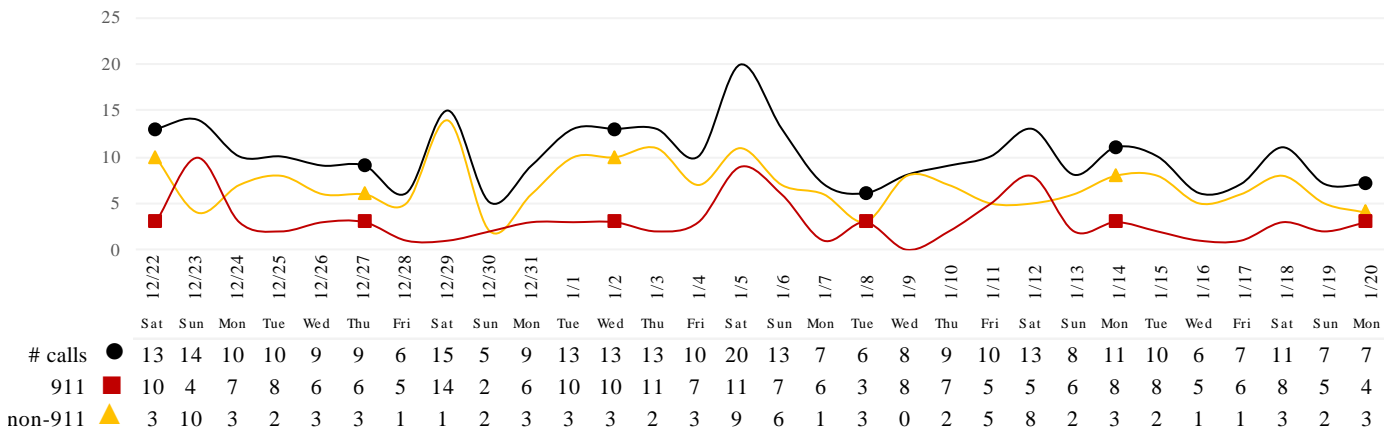
[Orange County COVID-19 Summary\\* click for full details](#)

	Sat 1/16/21	Sun 1/17/21	Mon 1/18/21	Tue 1/19/21	Wed 1/20/21	Thu 1/21/21	Fri 1/22/21
Cases Reported to Date	209,365	210,813	**	214,808	216,509	217,849	
Deaths Reported to Date	2,320	2,367	**	2,477	2,508	2,546	
Tests Reported Today	28,401	25,761	**	12,430	16,310	20,166	
Cumulative Tests to Date	2,404,943	2,430,704	**	2,457,987	2,474,297	2,494,463	

\*Data posted is always preliminary & subject to change. More information may become available as individual case investigations are completed. **LOCAL DATA MAY BE DIFFERENT FROM THE STATE WEBSITE DATA.** \*\*Current data was not available due to a county holiday.

\*Data Source: Orange County Medical Emergency Data System (OC-MEDS) – Updated 1/20/21

**Calls to SNFs/Congregate Living with Primary Impressions: Fever/Cough, Influenza-like Illnesses**  
(Transports to ERCs Only - Last 30 Days)



**SKILLED NURSING/ASSISTED LIVING/RESIDENTIAL CARE FACILITY – TRENDS**

\*Data Source: California Department of Public Health (CDPH)

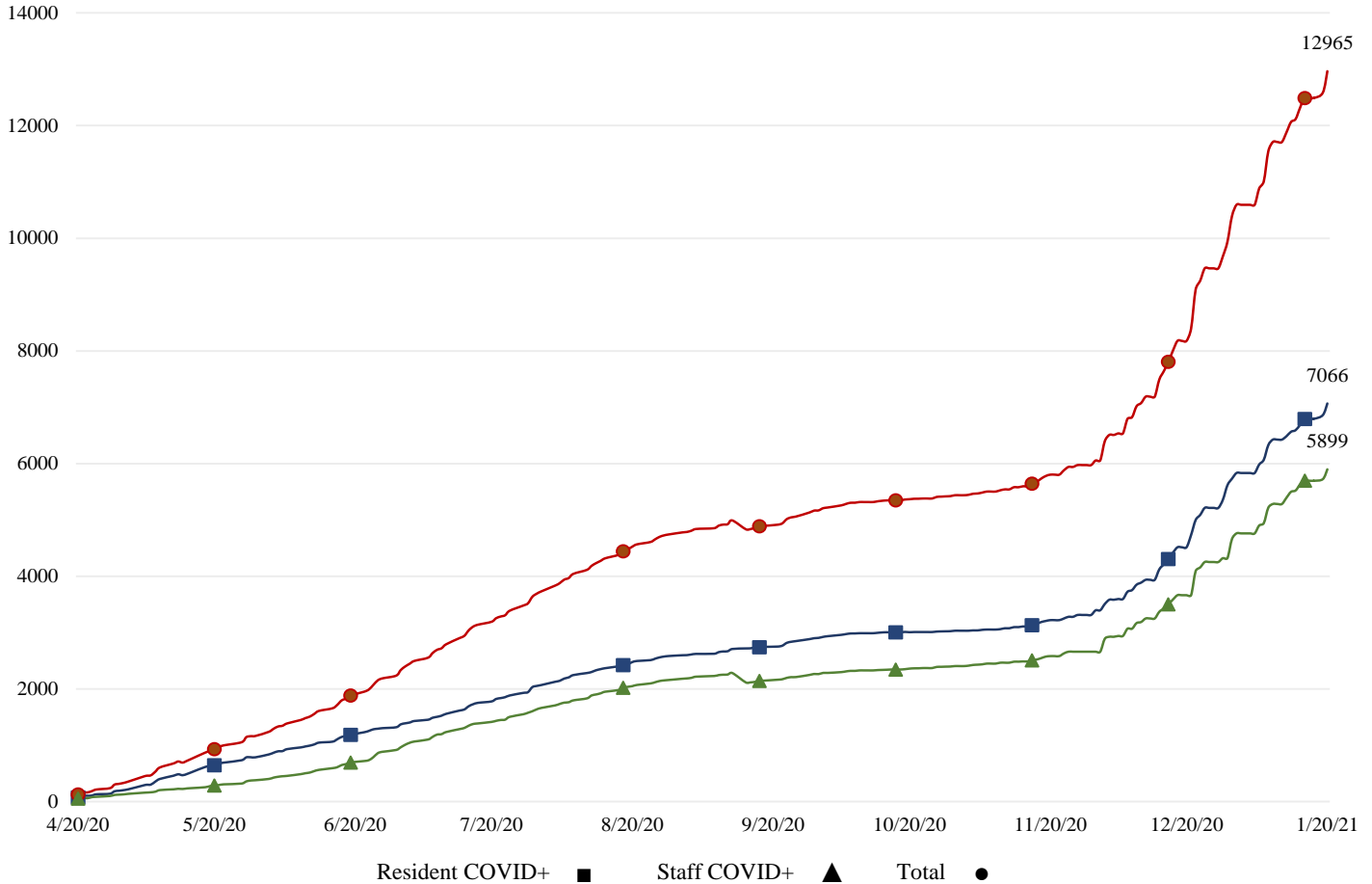
**Skilled Nursing/Assisted Living/Residential Care Facility PPE / Ventilator Supplies Days on Hand**  
(71/73 SNFs reported)

Reporting Date: 1/19/2021	0 - 3 days	4 - 7 days	8-14 days	15+ days
N95 Masks	0	2	13	56
Surgical Masks	0	2	11	58
Eye Protection	0	2	13	56
Gowns	0	3	10	58
Gloves	0	4	11	56
Alcohol-Based Hand Sanitizer	0	3	12	56

\*Data Source: Orange County Health Care Agency – Public Health

\*\*NOTE\*\*: Decrease in the COVID + in staff seen on graph is due to data being cleaned and removing duplicates of those that work in multiple OC facilities or are contract staff and care for residents at multiple facilities.

COVID+ in Congregate Healthcare\*



\*Data Source: Orange County Health Care Agency – Public Health

Current Facility Outbreaks (as of 1/20/21 1000)

An "Outbreak" is two (2) or more confirmed cases of COVID-19 in facility occurring within 14 days.

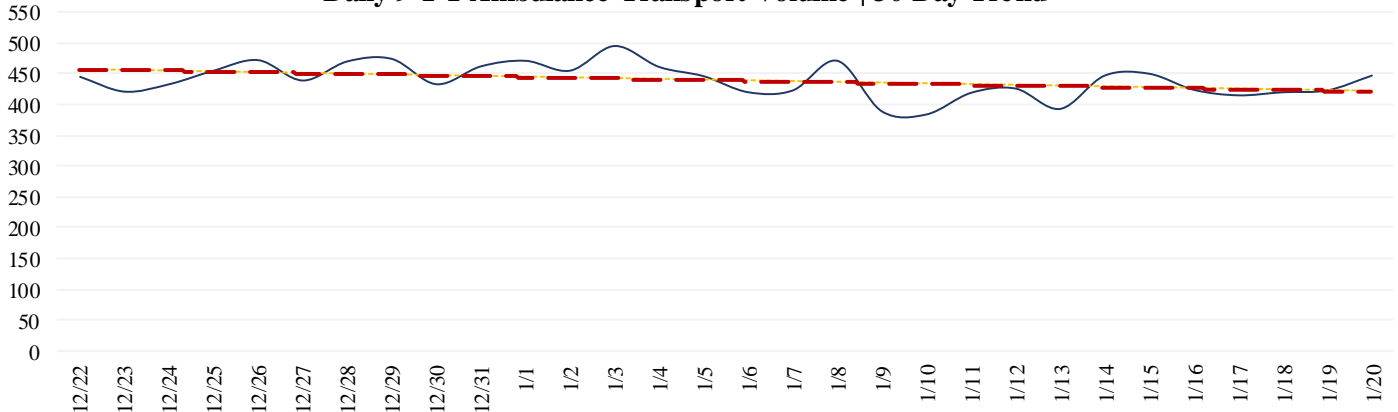
Facility Type by Licensing Category, Count	Facility Name Alphabetical
<p>Skilled Nursing Facility 36</p>	<p>Alamitos West Health &amp; Rehabilitation, Buena Park Nursing Center, Buena Vista Care Center, Chapman Care Center, Flagship Healthcare Center, Freedom Village Healthcare Center, French Park Care Center, Garden Grove Convalescent Hospital, Gordon Lane Care Center, Healthcare Center Of Orange County, La Palma Nursing Center, Laguna Hills Health And Rehabilitation Center, Lake Forest Nursing Center, Leisure Court Nursing Center, Mainplace Post Acute, Manorcare Health Services (Fountain Valley), Newport Subacute Healthcare Center, Orangegrove Rehabilitation Hospital, Park Anaheim Healthcare Center, Park Regency Care Center, Park Vista At Morningside (Snf), Seal Beach Health And Rehabilitation Center, Serento Rosa (Snf), St. Catherine, St. Edna Subacute And Rehabilitation Center, St. Elizabeth Healthcare Center, Stanley Healthcare Center, Sun Mar Nursing Center, Terrace View Care Center, The Hills Post Acute, The Pavilion At Sunny Hills, Town And Country Manor, Victoria Healthcare And Rehabilitation Center, Villa Valencia (Snf), West Anaheim Extended Care, Windsor Gardens Convalescent Center Of Anaheim</p>
<p>Elderly Assisted Living 49</p>	<p>Adagio San Juan, Aegis Assisted Living Of Laguna Niguel, Agape Orange Home Ii, Angels Care Guest Home Ii, Atria Newport Beach, Atria San Juan, Brookdale Anaheim, Brookdale Brookhurst, Brookdale Garden Grove, Brookdale Nohl Ranch, Brookdale Valley View, Capriana (Oakmont) Vellagio, Care Jeselle (Orange), Carmel Village Retirement Community, Enriching Inc, Freedom Village, Fullerton Gardens, Fullerton Rosewood Assisted Living, Harbor Heights Of Meridian, Irvine Cottage #7, Kirkwood Orange, Las Palmas, Meadowlark Gardens V, New Horizon Lodge, Inc., Newport Beach Memory Care, Newport Senior Living, Oakmont Of Huntington Beach, Pacifica Royale Assisted Living Community, Park Terrace, Seaside Terrace Retirement Community, Serento Rosa (Alf), Shalin Care Iv, Silverado Senior Living - Newport Mesa, Silverado Senior Living - San Juan Capistrano, St. Francis Home, Sunflower Gardens, Sunrise Assisted Living Of Fullerton, Sunrise At Yorba Linda, Sunrise Of Huntington Beach, Sunrise Of Mission Viejo, Sunrise Of Seal Beach, Town And Country Manor (Alf), Villa De Martin Jude Homes-Atlanta House, Villa De Martin Jude Homes-Atlata Facility, Vivante On The Coast, Vividus Senior Living (Laguna Niguel), Wellington, West Glenn Manor, Woodbridge Terrace Of Irvine</p>

**EMERGENCY MEDICAL SERVICES STATUS**

\*Data Source: Orange County Medical Emergency Data System (OC-MEDS)

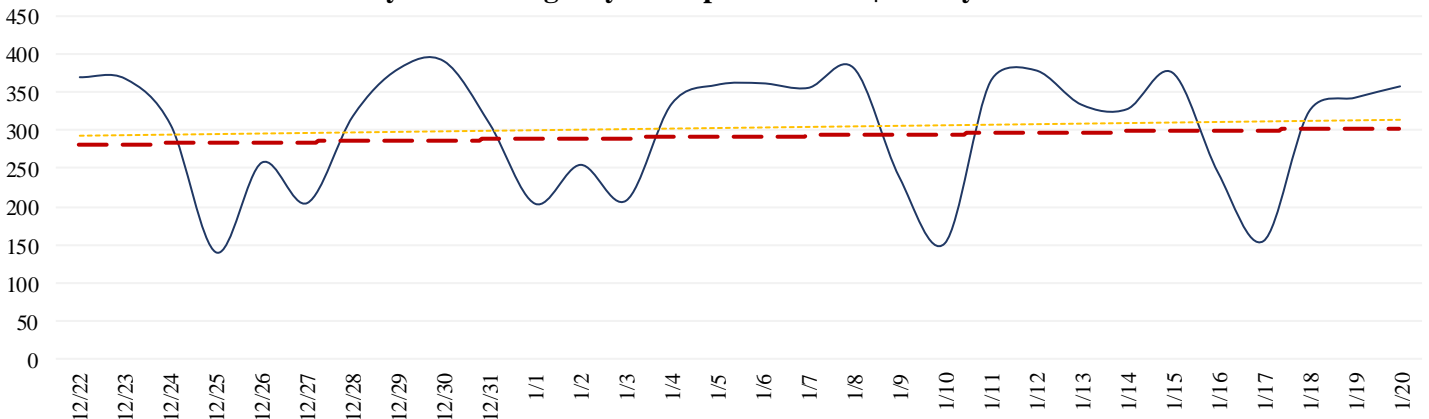
9-1-1 ambulance transport volume has **increased somewhat after a brief decline** following the New Year. Volume is **averaging about 5% below normal** (pre-COVID) levels (Updated 1/21/21).

**Daily 9-1-1 Ambulance Transport Volume | 30 Day Trend**

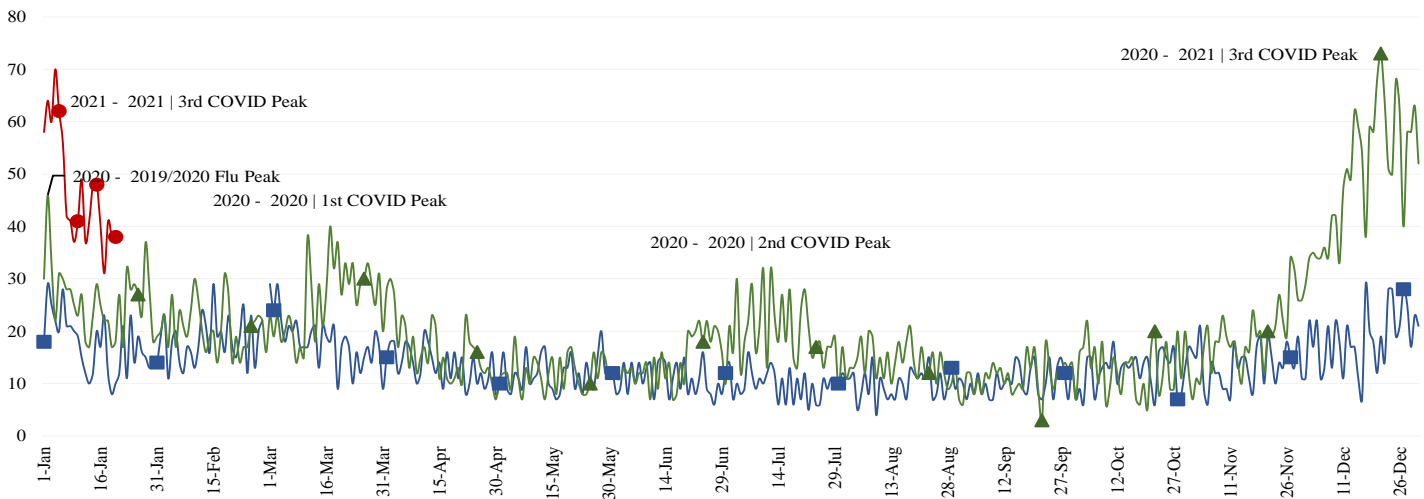


Non-emergency ambulance transports are stabilizing after declining for a few weeks. Transport volume is **averaging about 30-35% below normal** (pre-COVID) levels overall (Updated 1/21/21).

**Daily Non-Emergency Transport Volume | 30 Day Trend**



Primary Impressions of Cold/Flu/ILI by 9-1-1 EMS providers **appear to have stabilized after declining for a couple weeks.** (Updated 1/21/21).



**EMS Provider Impressions - Cold/Flu/ILI/COVID-19 Year Over Year Comparison (2019 ■, 2020 ▲, & 2021 ●)**

- Ambulance Patient Offload Time (APOT) is defined as the time the ambulance arrives at the receiving destination (wheels stop) to the time that the ambulance crew physically transfers the patient to the ED gurney. Last 24 hours: **Current Average APOT is: 17m14s / Current 90th Percentile APOT is: 38m18s**

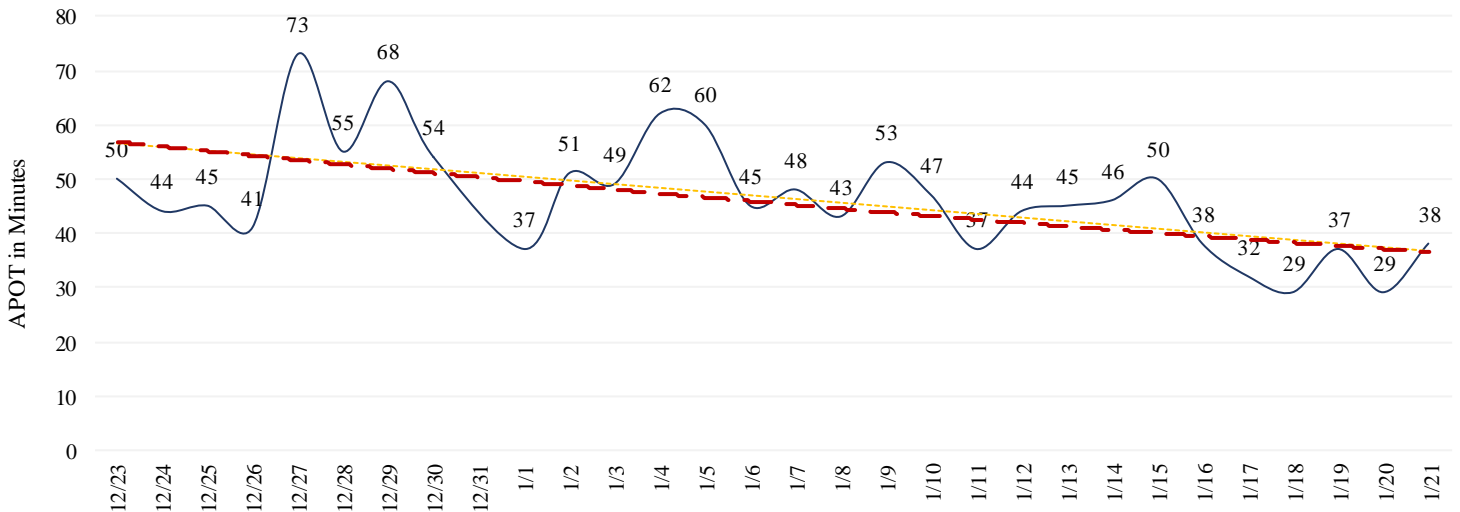
The chart below displays a daily trend over the last 30 days.

- Thirteen (13) ERCs had APOT times greater than thirty (30) minutes.
- Four (4) ERCs had APOT times greater than sixty (60) minutes.

*Note: a handful of ERCs were close to the 30 minute threshold, but were not over it.*

\*Data Source: Orange County Medical Emergency Data System (OC-MEDS) – Updated 1/21/21

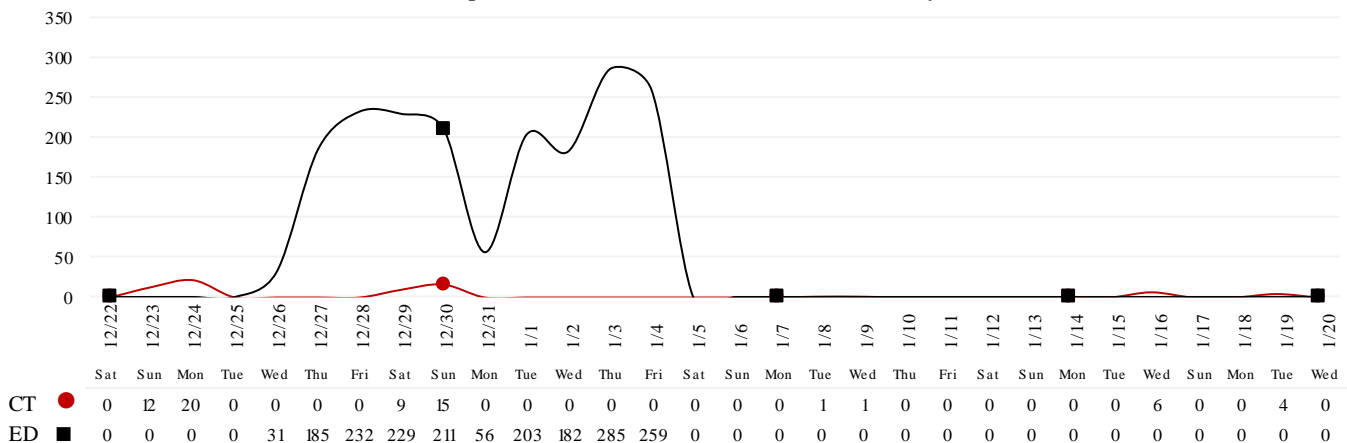
**COVID 19 - APOT 90th percentile | Daily Trend**



- Emergency Department (ED) Diversion & Computerized Tomography (CT) (ED closed to all ambulance transport due to no ED capacity or no CT available) for the last 30 days 12/22/20 – 1/20/21 below.
- **NOTE: Suspension of Hospital Diversion was reinstated, 1/4/21, @ 1900.**

\*Data Source: Orange County Medical Emergency Data System (OC-MEDS) – Updated 1/20/21

**Hours of Diversion per 24-Hour Period**  
 (25 Hospitals, rounded to nearest hour - Last 30 Days)



1/21/21

**26):** Anaheim Regional, Anaheim Global, Chapman Global, CHOC, CHOC at Mission, Foothill, Fountain Valley, Garden Grove, Hoag-Irvine, Hoag-Newport Beach, Huntington Beach, Kaiser-Anaheim, Kaiser-Irvine, La Palma, Los Alamitos, Mission-Laguna Beach, Mission-Mission Viejo, Orange Coast Memorial, Orange County Global, Placentia Linda, Saddleback Memorial, Saint Jude, South Coast Global, St. Josephs, UCI, West Anaheim

\*Data Source: California Department of Public Health (CDPH) – Snowflake server

Current Snowflake Data Dictionary may be found at:

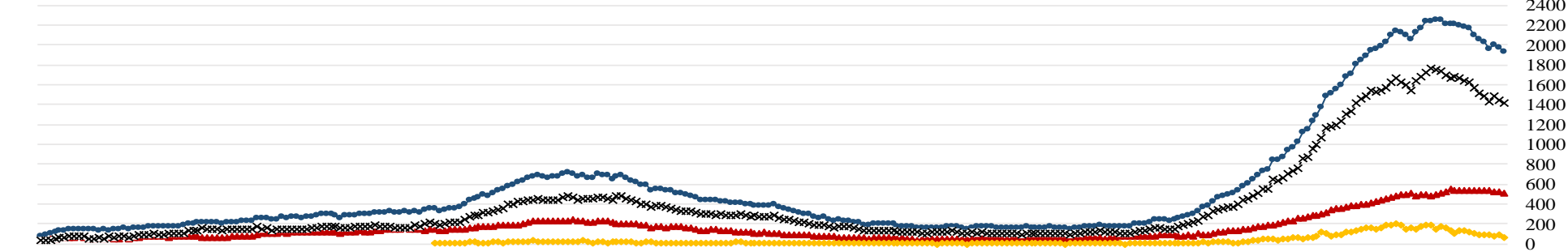
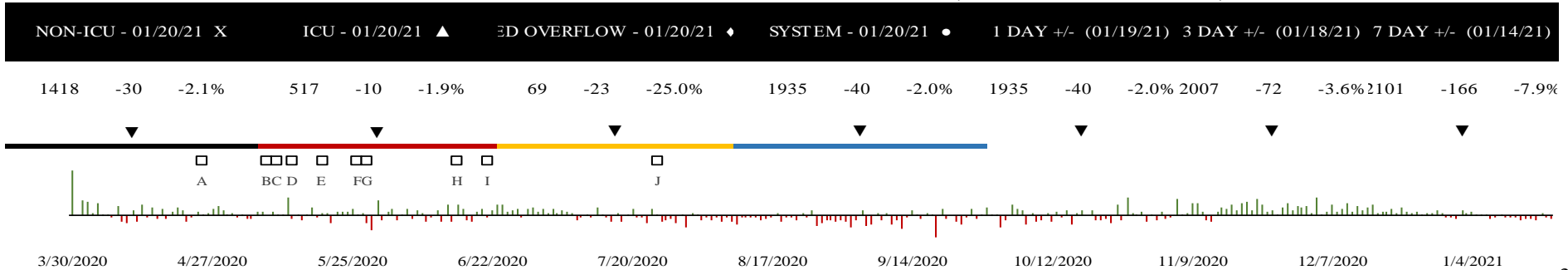
[https://www.calhospital.org/sites/main/files/file-attachments/data\\_dictionary\\_cha\\_covid\\_tracker\\_4-17-20.pdf](https://www.calhospital.org/sites/main/files/file-attachments/data_dictionary_cha_covid_tracker_4-17-20.pdf)

ALL HOSPITALS (33)															
DATE	Census ALL	Occupancy % *****	COVID+ Hospitalized	COVID+ ICU	ICU Occupied Adult	ICU Available Adult	% ICU Beds Adult Available	ICU Occupied Peds	ICU Available Peds	% ICU Beds Peds Available	ICU CDPH OC Occupied **	ICU CDPH OC Available ***	% ICU CDPH OC Available ****	% ICU Beds System Available *****	% Ventilators Available
1/3	4241	76%	2178	500	628	46	7%	30	38	56%	742	84	11%	22%	33%
1/4	4223	76%	2236	504	625	40	6%	20	48	71%	733	88	12%	22%	31%
1/5	4320	77%	2249	485	635	47	7%	30	38	56%	750	85	11%	21%	32%
1/6	4354	78%	2251	502	630	41	6%	29	39	57%	739	80	11%	21%	33%
1/7	4394	78%	2259	514	638	34	5%	27	41	60%	740	75	10%	21%	34%
1/8	4411	80%	2221	528	601	37	6%	27	41	60%	706	78	11%	21%	34%
1/9	4363	79%	2216	547	605	45	7%	18	50	74%	718	95	13%	23%	36%
1/10	4403	80%	2221	544	608	42	6%	26	42	62%	718	84	12%	23%	35%
1/11	4318	78%	2200	535	597	44	7%	25	43	63%	709	87	12%	23%	34%
1/12	4310	78%	2180	544	599	48	7%	25	37	60%	709	85	12%	22%	35%
1/13	4400	79%	2169	544	601	51	8%	26	36	58%	714	87	12%	23%	33%
1/14	4301	78%	2101	534	587	49	8%	20	42	68%	698	91	13%	25%	36%
1/15	4323	79%	2065	542	586	55	9%	20	42	68%	703	97	14%	24%	37%
1/16	4269	78%	2026	538	591	38	6%	21	41	66%	691	79	11%	22%	36%
1/17	4192	77%	1964	538	578	45	7%	21	41	66%	685	86	13%	23%	35%
1/18	4216	78%	2007	523	584	38	6%	24	38	61%	684	76	11%	22%	34%
1/19	4281	78%	1975	527	595	38	6%	26	36	58%	695	74	11%	21%	34%
1/20	4281	78%	1935	517	560	36	6%	28	34	55%	658	70	11%	22%	35%

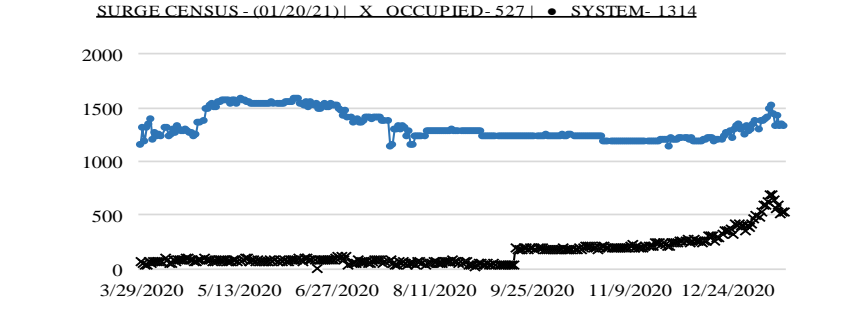
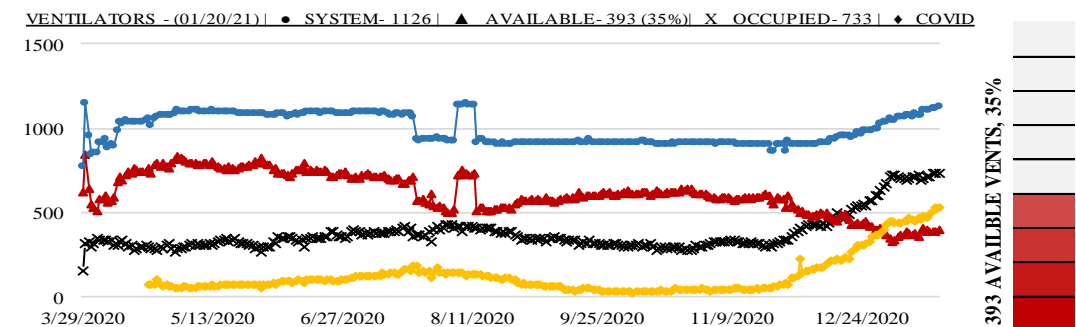
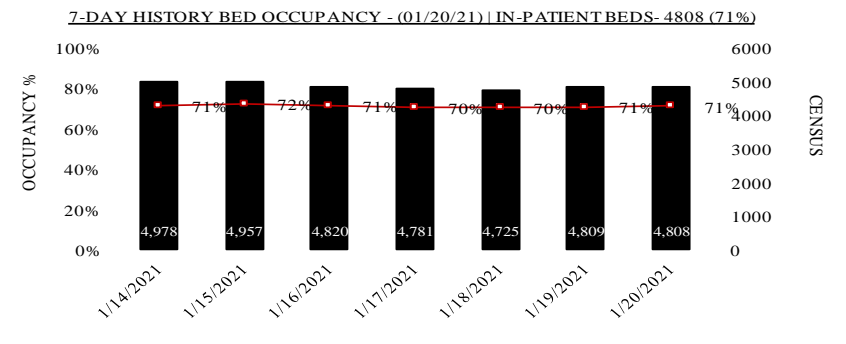
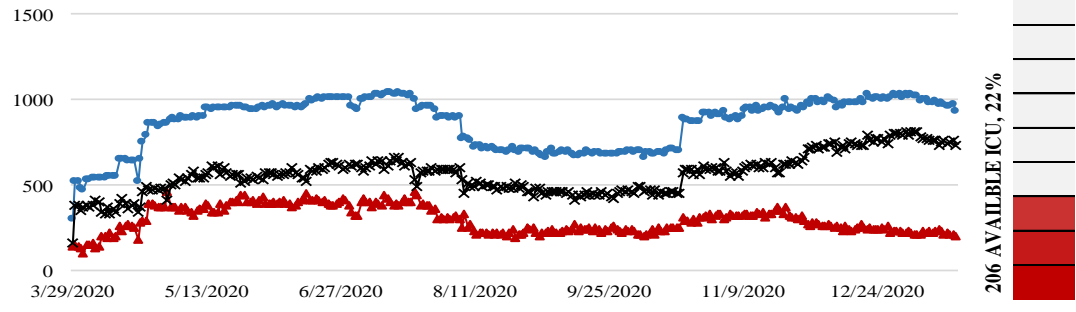
\*\*ICU CDPH OC Occupied – CDPH combines occupied ICU adult beds and occupied ICU pediatric beds as a reporting metric on their COVID-19 Hospital dashboard. \*\*\*ICU CDPH OC Available – CDPH subtracts the sum of occupied ICU adult beds and occupied ICU pediatric beds, from the sum of ICU total adult beds and ICU total pediatric beds to determine ICU available beds on their COVID-19 Hospital dashboard. \*\*\*\*% ICU CDPH OC Available – The sum of occupied ICU adult beds and occupied ICU pediatric beds, divided by the sum of ICU total adult beds and ICU total pediatric beds, as a percentage. \*\*\*\*\* ICU Beds System Available – All ICU beds reported as available in Orange County, which includes Adult, PICU, and NICU, and any other ICU bed types. \*\*\*\*\* Occupancy % - Census all, divided by system beds total, excluding surge capacity.

1/21/21

**COVID 19 ORANGE COUNTY HOSPITAL SYSTEM DATA (CA SNOWFLAKE SERVER)**

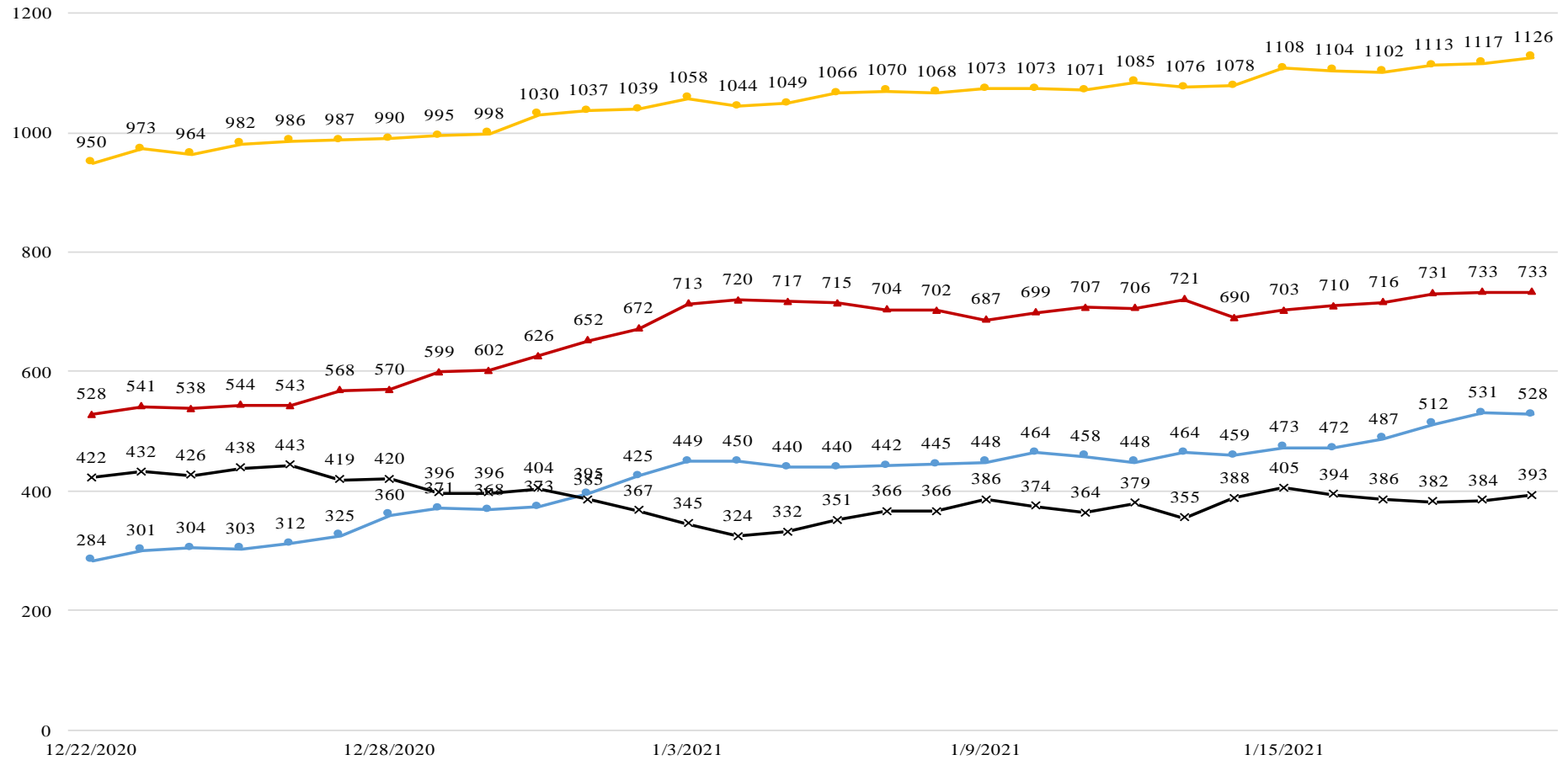


A.Face Covers Mandatory, B. Cinco de Mayo, C. OC Beaches Open, D. Mom's Day, E. OC Parks Parking Open, F. OC Stage 2 Approved, G. Memorial Day, H. Re-open entertainment, etc., I. CA Gov. Mask Mandate, J. Changes to data collection, Federal  
ICU CENSUS - (01/20/21) | ● SYSTEM-933 | ▲ AVAILABLE-206 (22%) | X OCCUPIED-727



1/21/21

**COVID 19 ORANGE COUNTY HOSPITAL SYSTEM DATA (CA SNOWFLAKE SERVER)**  
**VENTILATORS IN USE (12/22/20 - 01/20/21) | 33 ACUTE CARE FACILITIES REPORTING**



DATE	12/22	12/23	12/24	12/25	12/26	12/27	12/28	12/29	12/30	12/31	1/1	1/2	1/3	1/4	1/5	1/6	1/7	1/8	1/9	1/10	1/11	1/12	1/13	1/14	1/15	1/16	1/17	1/18	1/19	1/20
COVID+ ●	284	301	304	303	312	325	360	371	368	373	395	425	449	450	440	440	442	445	448	464	458	448	464	459	473	472	487	512	531	528
SYSTEM OCC ▲	528	541	538	544	543	568	570	599	602	626	652	672	713	720	717	715	704	702	687	699	707	706	721	690	703	710	716	731	733	733
SYSTEM AVL X	422	432	426	438	443	419	420	396	396	404	385	367	345	324	332	351	366	366	386	374	364	379	355	388	405	394	386	382	384	393
SYSTEM TTL ◆	950	973	964	982	986	987	990	995	998	1030	1037	1039	1058	1044	1049	1066	1070	1068	1073	1073	1071	1085	1076	1078	1108	1104	1102	1113	1117	1126

COVID+ = CONFIRMED AND SUSPECTED PATIENTS ON A VENTILATOR

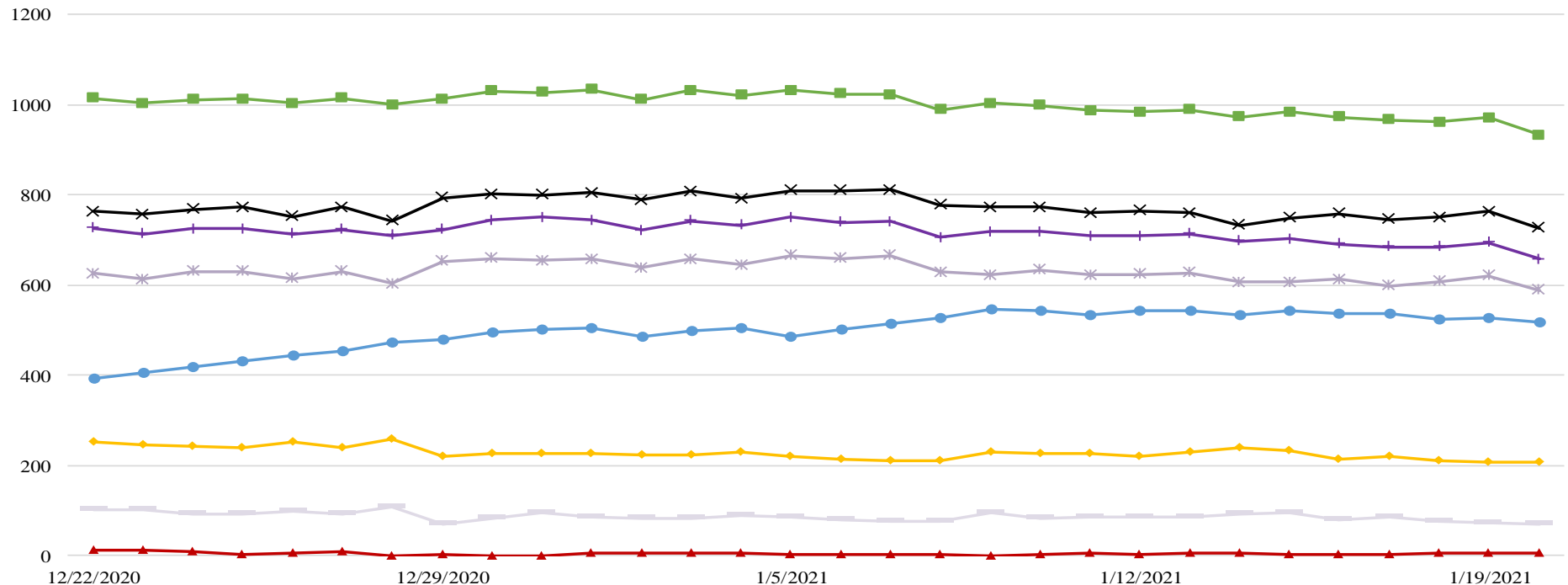
\*OCC = VENTILATORS IN USE, INCLUDING COVID+ PATIENTS AND OTHER VENT PATIENTS

\*\*AVL = AVAILABLE VENTILATORS IN SYSTEM

\*\*\*TTL = TOTAL VENTILATORS IN SYSTEM

1/21/21

**COVID 19 ORANGE COUNTY HOSPITAL SYSTEM DATA (CA SNOWFLAKE SERVER)**  
**ICU BEDS (12/22/20 - 01/20/21) | 33 ACUTE CARE FACILITIES REPORTING**



DATE	12/22	12/23	12/24	12/25	12/26	12/27	12/28	12/29	12/30	12/31	1/1	1/2	1/3	1/4	1/5	1/6	1/7	1/8	1/9	1/10	1/11	1/12	1/13	1/14	1/15	1/16	1/17	1/18	1/19	1/20
CONFIRMED	394	405	417	432	443	453	473	479	495	501	506	487	500	504	485	502	514	528	547	544	535	544	544	534	542	538	538	523	527	517
SUSPECTED	11	12	8	4	7	8	1	2	1	0	6	5	6	5	3	4	3	3	0	3	5	4	5	7	3	2	3	5	7	6
OCCUPIED	763	756	768	772	752	773	742	793	802	800	805	788	807	792	810	809	811	778	773	772	760	764	759	733	749	758	746	750	763	727
SYSTEM AVL	251	246	243	241	251	241	258	219	228	227	228	223	224	229	221	214	211	211	230	226	227	220	229	239	234	214	220	211	207	206
SYSTEM TTL	1014	1002	1011	1013	1003	1014	1000	1012	1030	1027	1033	1011	1031	1021	1031	1023	1022	989	1003	998	987	984	988	972	983	972	966	961	970	933
CDPH OC OCC	625	613	631	631	614	631	603	653	659	654	657	638	658	645	665	659	665	628	623	634	622	624	627	607	606	612	599	608	621	588
CDPH OC AVL	102	101	94	93	99	92	107	70	84	96	86	83	84	88	85	80	75	78	95	84	87	85	87	91	97	79	86	76	74	70
CDPH OC TTL	727	714	725	724	713	723	710	723	743	750	743	721	742	733	750	739	740	706	718	718	709	709	714	698	703	691	685	684	695	658

\*AVL = AVAILABLE NON SURGE ICU BEDS. PRIOR TO 7/22 DEFINITION DID NOT EXCLUDE NONSURGE.

\*\*TTL = TOTAL NON SURGE ICU BEDS. PRIOR TO 7/22 DEFINITION DID NOT EXCLUDE NONSURGE.

\*\*\* AS OF 10/20/2020 SPIKE IN SYSTEM TTL, OCCUPIED AND AVAILABLE DUE TO CHANGE IN CHOC ORANGE REPORTED VALUES.

\*\*\*\* CDPH OC OCC = Adult ICU Occupied + Pediatric ICU Occupied

\*\*\*\*\* CDPH OC AVL = (Adult ICU Total Beds + Pediatric ICU Total Beds) - (Adult ICU Occupied + Pediatric ICU Occupied)

\*\*\*\*\* CDPH OC TTL = Adult ICU Total + Pediatric ICU Total



\*Data Source: California Department of Public Health (CDPH) – Snowflake server

\*\*Current Snowflake Data Dictionary may be found at:

[https://www.calhospital.org/sites/main/files/file-attachments/data\\_dictionary\\_cha\\_covid\\_tracker\\_4-17-20.pdf](https://www.calhospital.org/sites/main/files/file-attachments/data_dictionary_cha_covid_tracker_4-17-20.pdf)

**Acute Care Hospital PPE / Ventilator Supplies Days on Hand – (31/33 ACHs reported)**

Reporting Date: 1/20/21*	30 days +	15-30 days	7-14 days	4-6 days	0-3 days	Not Reported
Ventilator Supplies**	8	6	16	2	0	1
N95 Masks**	21	10	0	0	0	2
Surgical Masks**	24	6	1	0	0	2
Face Shields**	20	4	3	3	1	2
Gloves**	14	8	4	2	3	2
Gowns**	17	7	5	0	2	2

**Hospital Criteria for shifting to Crisis Care Strategies**

**LEGEND**

**STATUS**

CRITERIA	STATUS		
	Normal Operations	Modified Operations	Modified Operations Assistance Needed
Rate of change in Hospitalized COVID-19 patients (doubling time over last 7 days)	Never to 4 weeks to double	4 weeks to 2 weeks to double	Less than 2 weeks to double
Absolute COVID-19 Census in the hospitals across Orange County	Less than 750	750-1500	>1500
Hospital census as a percentage of staffed capacity	<80%	80% to 90%	>90%
Hospital ICU census as a percentage of staffed ICU capacity	<70%	70% to 85%	>85%

**Hospital Criteria for shifting to Crisis Care Strategies**

1/20/21

**STATUS**

CRITERIA	STATUS		
	Normal Operations	Modified Operations Under Control	Modified Operations Assistance Needed
Rate of change in Hospitalized COVID-19 patients (doubling time over last 7 days)	Declining		
Absolute COVID-19 Census in the hospitals across Orange County			1935
Hospital census as a percentage of staffed capacity	78%		
Hospital ICU census as a percentage of staffed ICU capacity			89%

**AGENCY OPERATIONS CENTER / LOGISTICS SECTION**

- The AOC is activated M-F 0900-1600 at Level I; Warehouse Ops are M-F - 0900-1600.
- SCARCE Resources: Gloves, Wipes, Syringes, Needles

**Total Activity – Updated 1/20/21 at 1530**

INQUIRIES	RR RECEIVED	RR FILLED
17,711 +18	10,339 +10	8,351 +10
Total Denied Requests: 860 / Total Redacted Requests: 908		

**Inventory Report February 18 to January 20, 2021**

**Logistics Daily Units Distributed 1/2021**

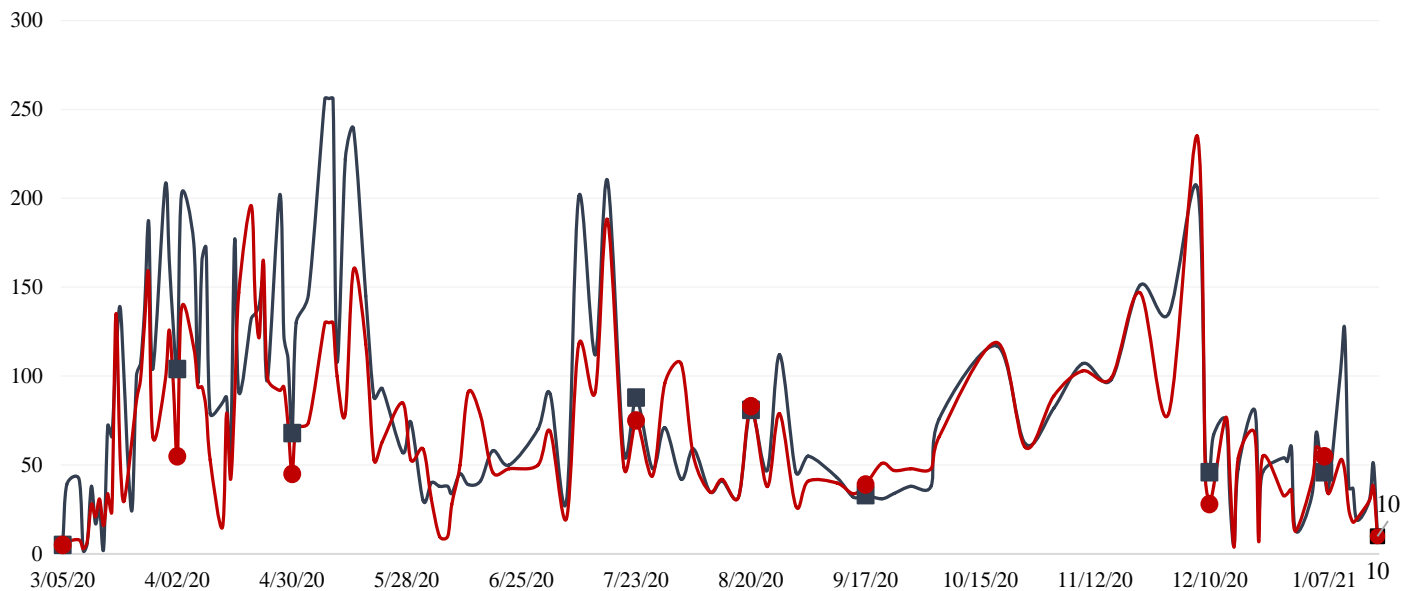
N95 Mask	1,000
Surgical Mask	1,000
Gown	5,000
Gloves	24,000
Face Shields/Eye Protection	0
Hand Sanitizer	0
Other	6
<b>Total Units</b>	<b>31,006</b>

**Medical Supply/Equipment Total Units Distributed**

N95 Mask	5,076,755
Surgical Mask	2,015,605
Gowns	2,737,616
PPE-Suit	17,965
Gloves	5,788,150
Eye Protection	409,619
Hand Sanitizer	313,071
Other Items	2,399,928
<b>Total Units</b>	<b>18,758,709</b>

**Resource Requests - Updated 1/21/21 at 1530**

Received ■ Filled ●





**MOBILE FIELD HOSPITALS**

