

OVERVIEW OF CURRENT SITUATION (1/27/21 1022) Source: Johns Hopkins University & Medicine <https://coronavirus.jhu.edu/map.html>

Cases / Deaths
 Worldwide: 100,498,378 / 2,164,738
 Nationwide: 25,306,581 / 426,175
 California: 3,235,312 / 38,275
 Orange Co: 227,021 / 2,839 Source: [Orange County COVID-19 Case Counts & Testing Figures](#)

ORANGE COUNTY PUBLIC HEALTH (as of 1/27/21 1000)

[Orange County COVID-19 Summary* click for full details](#)

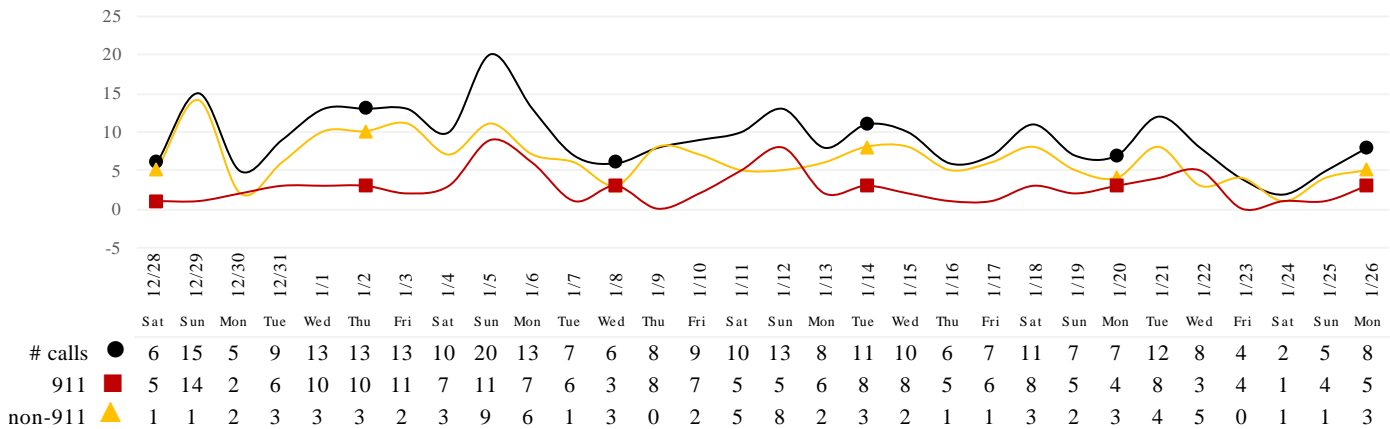
	Sat 1/23/21	Sun 1/24/21	Mon 1/25/21	Tue 1/26/21	Wed 1/27/21	Thu 1/28/21	Fri 1/29/21
Cases Reported to Date	221,493	223,288	224,618	225,983	227,021		
Deaths Reported to Date	2,625	2,638	2,704	2,768	2,839		
Tests Reported Today	25,262	15,466	13,770	13,849	14,230		
Cumulative Tests to Date	2,544,782	2,560,248	2,574,018	2,587,867	2,602,097		

*Data posted is always preliminary & subject to change. More information may become available as individual case investigations are completed. **LOCAL DATA MAY BE DIFFERENT FROM THE STATE WEBSITE DATA.**

SKILLED NURSING/ASSISTED LIVING/RESIDENTIAL CARE FACILITY – TRENDS

*Data Source: Orange County Medical Emergency Data System (OC-MEDS) – Updated 1/26/21

Calls to SNFs/Congregate Living with Primary Impressions: Fever/Cough, Influenza-like Illnesses
(Transports to ERCs Only - Last 30 Days)



*Data Source: California Department of Public Health (CDPH)

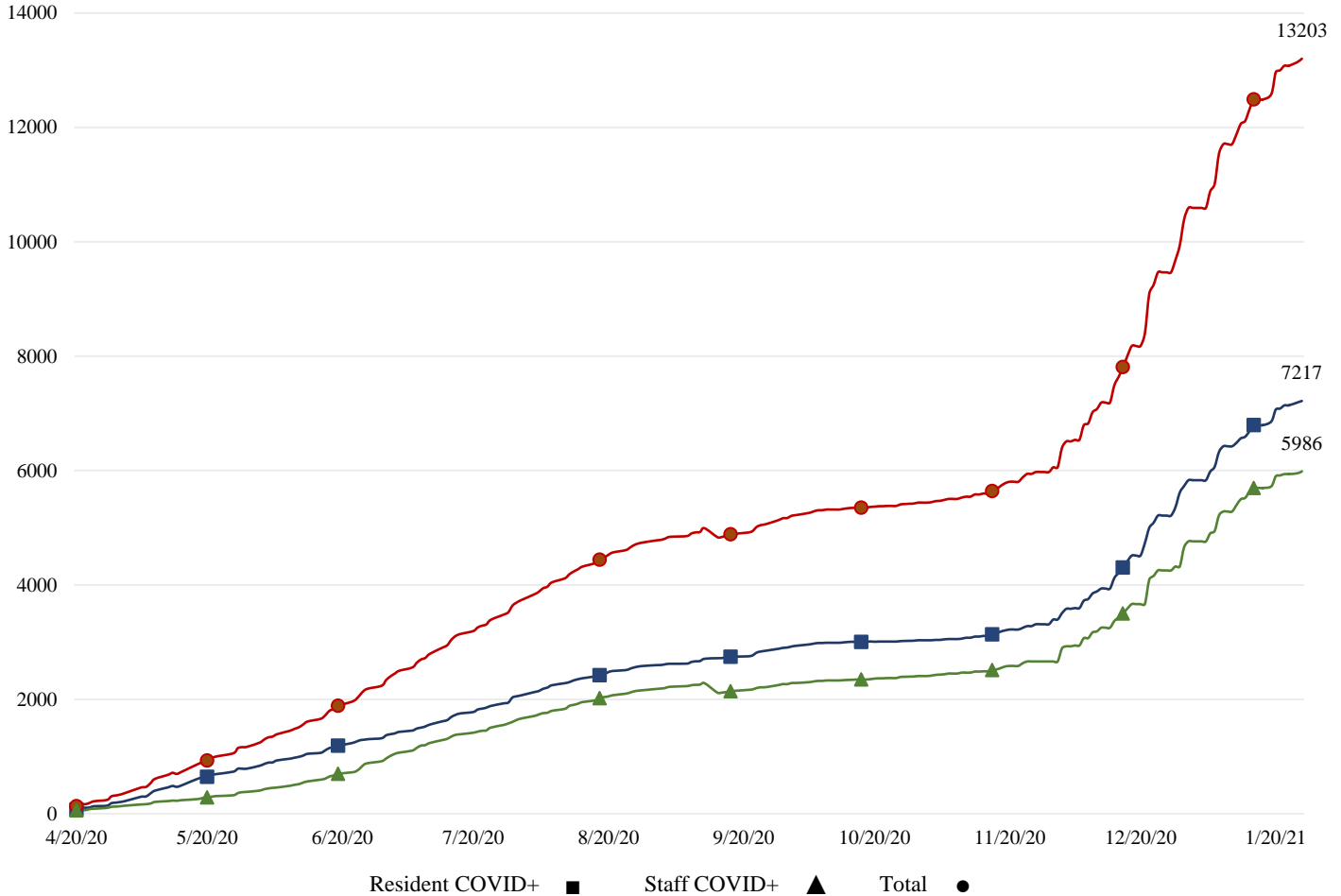
Skilled Nursing/Assisted Living/Residential Care Facility PPE / Ventilator Supplies Days on Hand (70/73 SNFs reported)

Reporting Date: 1/26/2021	0 - 3 days	4 - 7 days	8-14 days	15+ days
N95 Masks	0	2	11	57
Surgical Masks	0	2	9	59
Eye Protection	0	2	11	57
Gowns	0	3	9	58
Gloves	0	4	9	57
Alcohol-Based Hand Sanitizer	0	3	10	57

*Data Source: Orange County Health Care Agency – Public Health

NOTE: Decrease in the COVID + in staff seen on graph is due to data being cleaned and removing duplicates of those that work in multiple OC facilities or are contract staff and care for residents at multiple facilities.

COVID+ in Congregate Healthcare*



*Data Source: Orange County Health Care Agency – Public Health

Current Facility Outbreaks (as of 1/27/21 1000)

An "Outbreak" is two (2) or more confirmed cases of COVID-19 in facility occurring within 14 days.

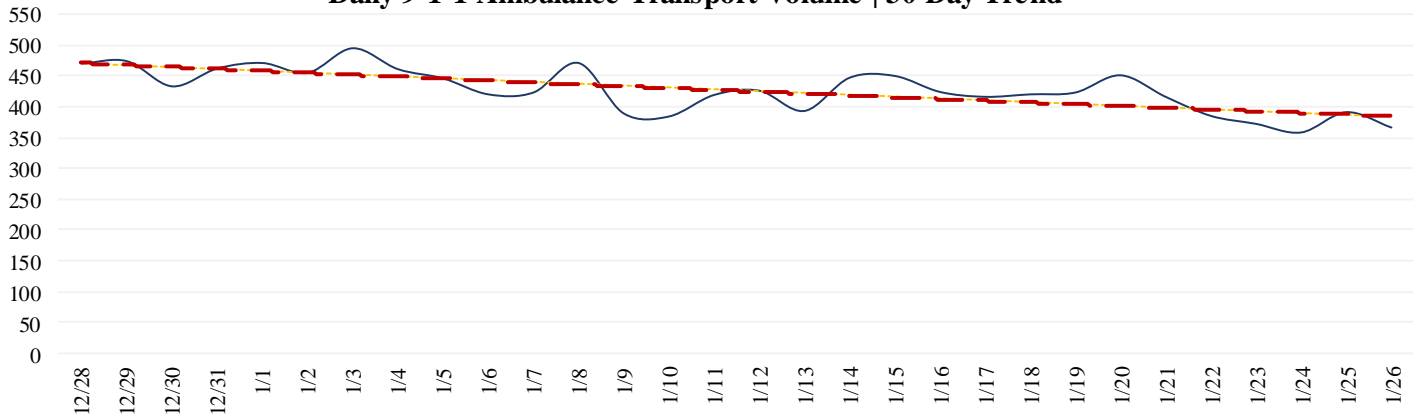
Facility Type by Licensing Category, Count	Facility Name Alphabetical
Skilled Nursing Facility 26	Alamitos West Health & Rehabilitation, Chapman Care Center, Coventry Court Health Center, Flagship Healthcare Center, Freedom Village Healthcare Center, French Park Care Center, Gordon Lane Care Center, Healthcare Center Of Orange County, Laguna Hills Health And Rehabilitation Center, Lake Forest Nursing Center, Leisure Court Nursing Center, Mainplace Post Acute, Manorcare Health Services (Fountain Valley), Orangegrove Rehabilitation Hospital, Pacific Haven Subacute And Healthcare Center, Palm Terrace Healthcare & Rehabilitation Center, Park Anaheim Healthcare Center, Park Regency Care Center, Park Vista At Morningside (Snf), Seal Beach Health And Rehabilitation Center, Serento Rosa (Snf), St. Catherine, St. Edna Subacute And Rehabilitation Center, Terrace View Care Center, Villa Valencia (Snf), West Anaheim Extended Care
Elderly Assisted Living 39	Adagio San Juan, Aegis Assisted Living Of Laguna Niguel, Angels Care Guest Home Ii, Atria Newport Beach, Atria San Juan, Brookdale Brookhurst, Brookdale Nohl Ranch, Capriana (Oakmont) Vellagio, Carmel Village Retirement Community, Enriching Inc, Fullerton Gardens, Fullerton Villa, Gracious Care Homes, Harbor Heights Of Meridian, Heritage Pointe, Irvine Cottage #7, Johnson Senior Care B&C, Las Palmas, Meridian At Laguna Hills, New Horizon Lodge, Inc., Newport Beach Memory Care, Newport Senior Living, Pacifica Royale Assisted Living Community, Seaside Terrace I, Seaside Terrace Ii, Seaside Terrace Retirement Community, Serento Rosa (Alf), Silverado Senior Living - Newport Mesa, St. Francis Home, Sunflower Gardens, Sunrise Assisted Living Of Fullerton, Sunrise Of Huntington Beach, Sunrise Of Seal Beach, The Covington, Town And Country Manor (Alf), Villa De Martin Jude Homes-Atlanta House, Vivante On The Coast, West Glenn Manor, Woodbridge Terrace Of Irvine

EMERGENCY MEDICAL SERVICES STATUS

*Data Source: Orange County Medical Emergency Data System (OC-MEDS)

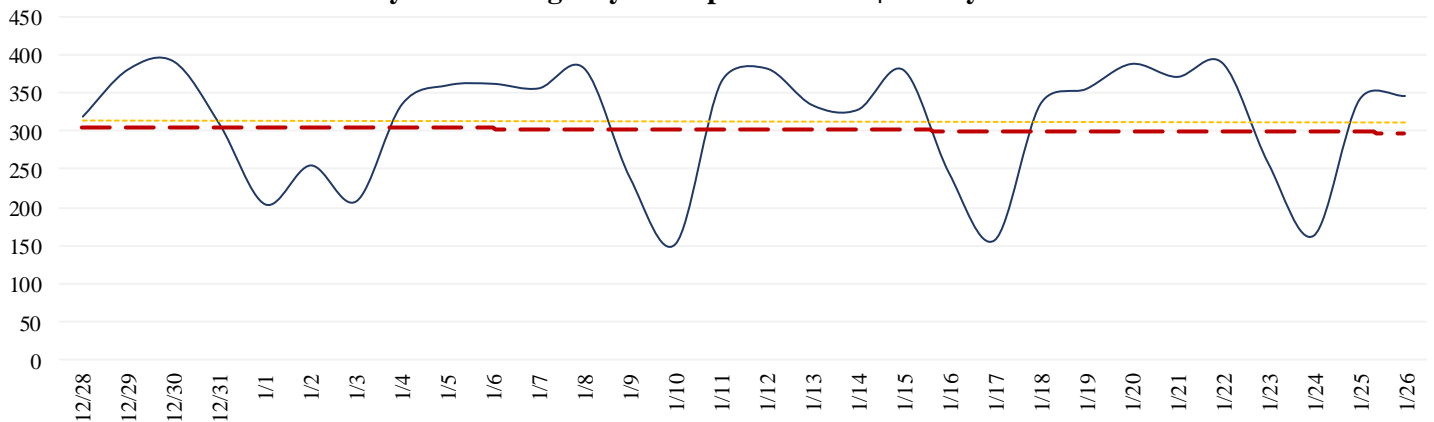
9-1-1 ambulance transport volume has **decreased significantly** over the last few days. **Volume is averaging about 10% below normal** (pre-COVID) levels (Updated 01/27/21).

Daily 9-1-1 Ambulance Transport Volume | 30 Day Trend



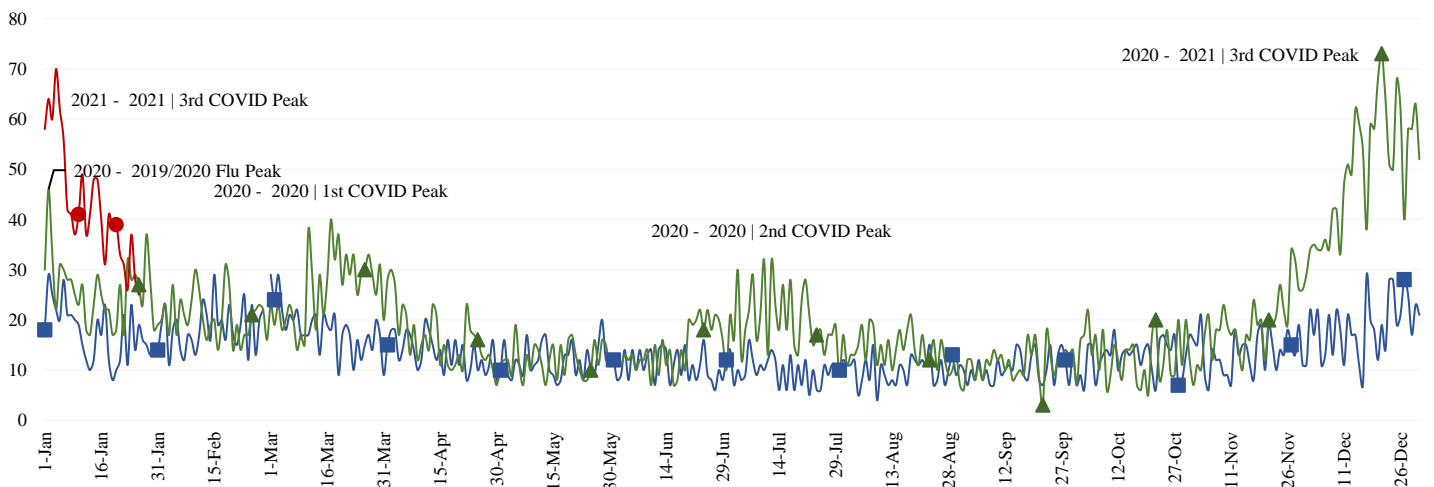
Non-emergency ambulance transports has **increased slightly**. Transport volume is **averaging about 30-35% below normal** (pre-COVID) levels overall (Updated 01/27/21).

Daily Non-Emergency Transport Volume | 30 Day Trend



Primary Impressions of Cold/Flu/ILI by 9-1-1 EMS providers **continue to decline**. (Updated 01/27/21).

EMS Provider Impressions - Cold/Flu/ILI/COVID-19 Year Over Year Comparison (2019 ■, 2020 ▲, & 2021 ●)



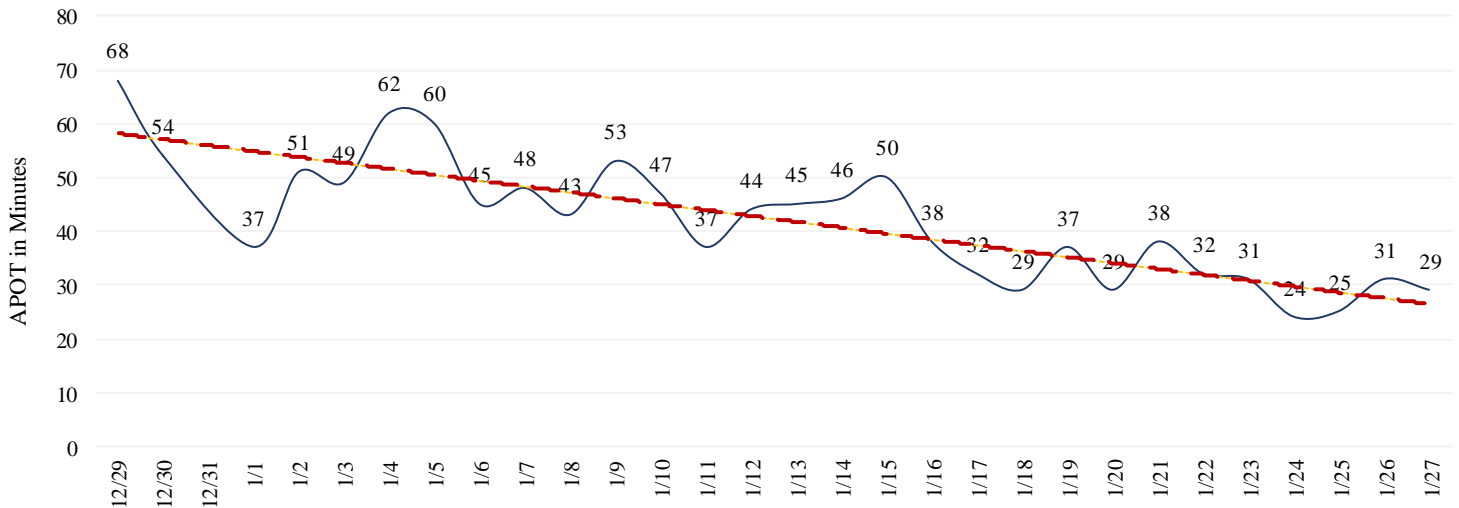
- Ambulance Patient Offload Time (APOT) is defined as the time the ambulance arrives at the receiving destination (wheels stop) to the time that the ambulance crew physically transfers the patient to the ED gurney. Last 24 hours: **Current Average APOT is: 13m53s / Current 90th Percentile APOT is: 29m47s**

The chart below displays a daily trend over the last 30 days.

- Ten (10) ERCs had APOT times greater than thirty (30) minutes.
- Zero (0) ERCs had APOT times greater than sixty (60) minutes.

*Data Source: Orange County Medical Emergency Data System (OC-MEDS) – Updated 1/27/21

COVID 19 - APOT 90th percentile | Daily Trend

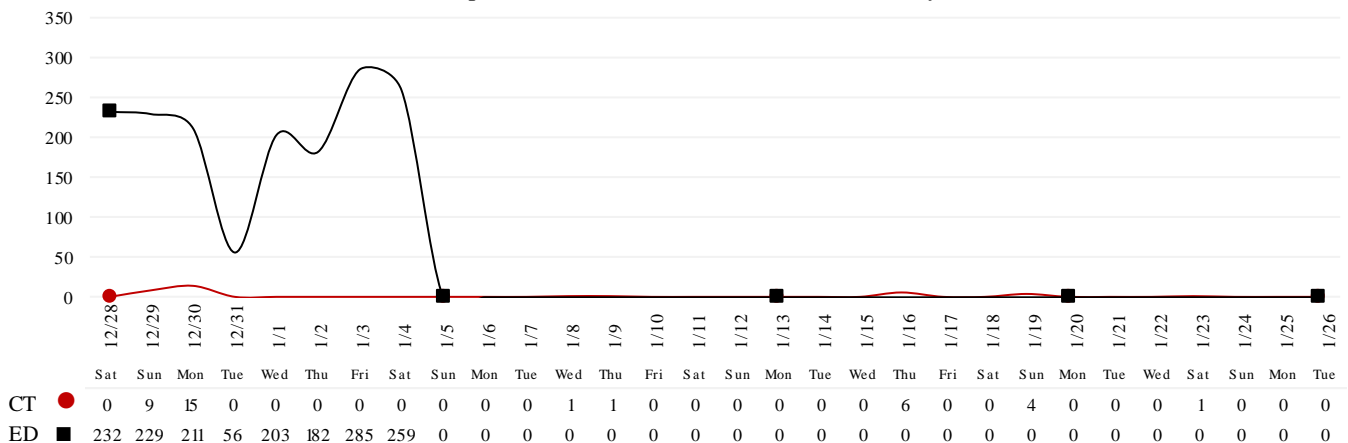


Note: a handful of ERCs were close to the 30 minute threshold, but were not over it.

- Emergency Department (ED) Diversion & Computerized Tomography (CT) (ED closed to all ambulance transport due to no ED capacity or no CT available) for the last 30 days 12/28/20 – 1/26/21 below.
- NOTE: Suspension of Hospital Diversion was reinstated, 1/4/21, @ 1900.**
- NOTE: Hospital Diversion was reinstated on 1/25/21 @ 1900.**

*Data Source: Orange County Medical Emergency Data System (OC-MEDS) – Updated 1/26/21

Hours of Diversion per 24-Hour Period
 (25 Hospitals, rounded to nearest hour - Last 30 Days)



1/26/21

26): Anaheim Regional, Anaheim Global, Chapman Global, CHOC, CHOC at Mission, Foothill, Fountain Valley, Garden Grove, Hoag-Irvine, Hoag-Newport Beach, Huntington Beach, Kaiser-Anaheim, Kaiser-Irvine, La Palma, Los Alamitos, Mission–Laguna Beach, Mission-Mission Viejo, Orange Coast Memorial, Orange County Global, Placentia Linda, Saddleback Memorial, Saint Jude, South Coast Global, St. Josephs, UCI, West Anaheim

*Data Source: California Department of Public Health (CDPH) – Snowflake server

Current Snowflake Data Dictionary may be found at:

https://www.calhospital.org/sites/main/files/file-attachments/data_dictionary_cha_covid_tracker_4-17-20.pdf

33 HOSPITALS

Date	Census All System	Occupancy % System	COVID+ Hospitalized System	COVID+ Hospitalized ICU Only (Adult & Peds)	% COVID+ hospitalized of ICU Occupied (Adult & Peds)	ICU Occupied (Adult & Peds)**	ICU Available (Adult & Peds)***	% ICU Available (Adult & Peds)****	ICU by Patient Age Group						% Ventilators Available
									Adult Occupied	Adult Available	Adult % Available	Pediatric Occupied	Pediatric Available	Pediatric % Available	
1/13	4400	79%	2169	544	87%	627	87	12%	601	51	8%	26	36	58%	33%
1/14	4301	78%	2101	534	88%	607	91	13%	587	49	8%	20	42	68%	36%
1/15	4323	79%	2065	542	89%	606	97	14%	586	55	9%	20	42	68%	37%
1/16	4269	78%	2026	538	88%	612	79	11%	591	38	6%	21	41	66%	36%
1/17	4192	77%	1964	538	90%	599	86	13%	578	45	7%	21	41	66%	35%
1/18	4216	78%	2007	523	86%	608	76	11%	584	38	6%	24	38	61%	34%
1/19	4281	78%	1975	527	85%	621	74	11%	595	38	6%	26	36	58%	34%
1/20	4281	78%	1935	517	88%	588	70	11%	560	36	6%	28	34	55%	35%
1/21	4262	78%	1896	516	88%	586	96	14%	557	63	10%	29	33	53%	35%
1/22	4257	78%	1818	482	79%	608	80	12%	578	48	8%	30	32	52%	36%
1/23	4161	77%	1732	467	83%	561	73	12%	531	48	8%	30	25	45%	35%
1/24	4115	77%	1703	447	84%	532	81	13%	509	49	9%	23	32	58%	38%
1/25	4100	76%	1677	437	79%	556	89	14%	532	58	10%	24	31	56%	38%
1/26	4098	76%	1639	448	80%	557	90	14%	535	57	10%	22	33	60%	39%

ICU occupied PREVIOUSLY ICU CDPH OC Occupied – CDPH combines occupied ICU adult beds and occupied ICU pediatric beds as a reporting metric on their COVID-19 Hospital dashboard. *ICU Available PREVIOUSLY ICU CDPH OC Available – CDPH subtracts the sum of occupied ICU adult beds and occupied ICU pediatric beds, from the sum of ICU total adult beds and ICU total pediatric beds to determine ICU available beds on their COVID-19 Hospital dashboard. ****% ICU AVAILABLE PREVIOUSLY % ICU CDPH OC Available – The sum of occupied ICU adult beds and occupied ICU pediatric beds, divided by the sum of ICU total adult beds and ICU total pediatric beds, as a percentage. *****COVID+ hospitalized of ICU Occupied PREVIOUSLY % ICU Beds System Available – All ICU beds reported as available in Orange County, which includes Adult, PICU, and NICU, and any other ICU bed types.

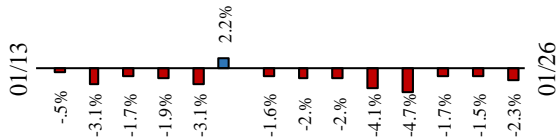
1/26/21

COVID 19 ORANGE COUNTY HOSPITAL SYSTEM DATA (CA SNOWFLAKE SERVER)

COVID+ CENSUS by BED TYPE | 01/26/2021

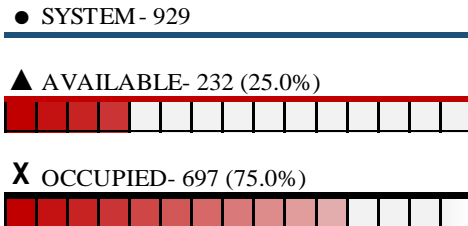
▲ ICU	448	+11	2.5%	▲
◆ ED OVERFLOW	53	+4	8.2%	▲
X NON-ICU	1191	-49	-4.0%	▼
● SYSTEM	1639	-38	-2.3%	▼
3 Day 01-23-21	1732	-93	-5.4%	
7 Day 01-19-21	1975	-336	-17.0%	

14 Day System COVID+ Change

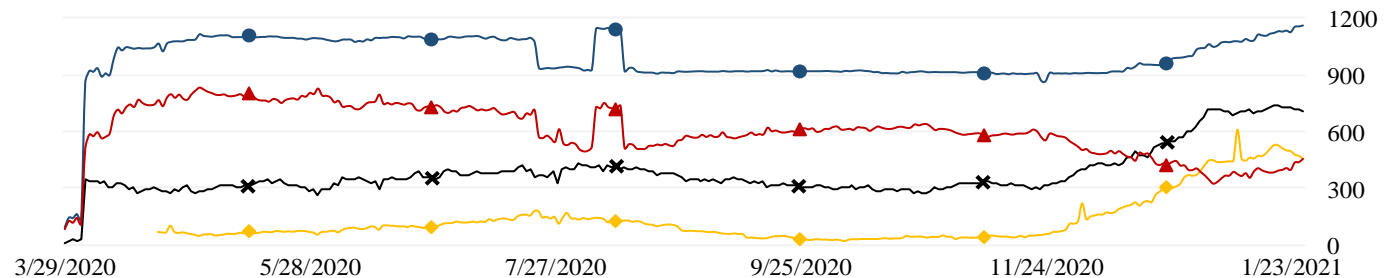
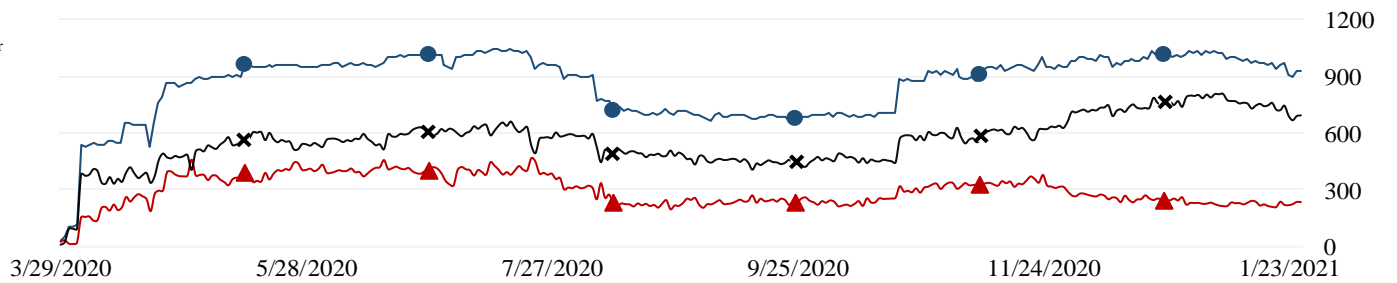
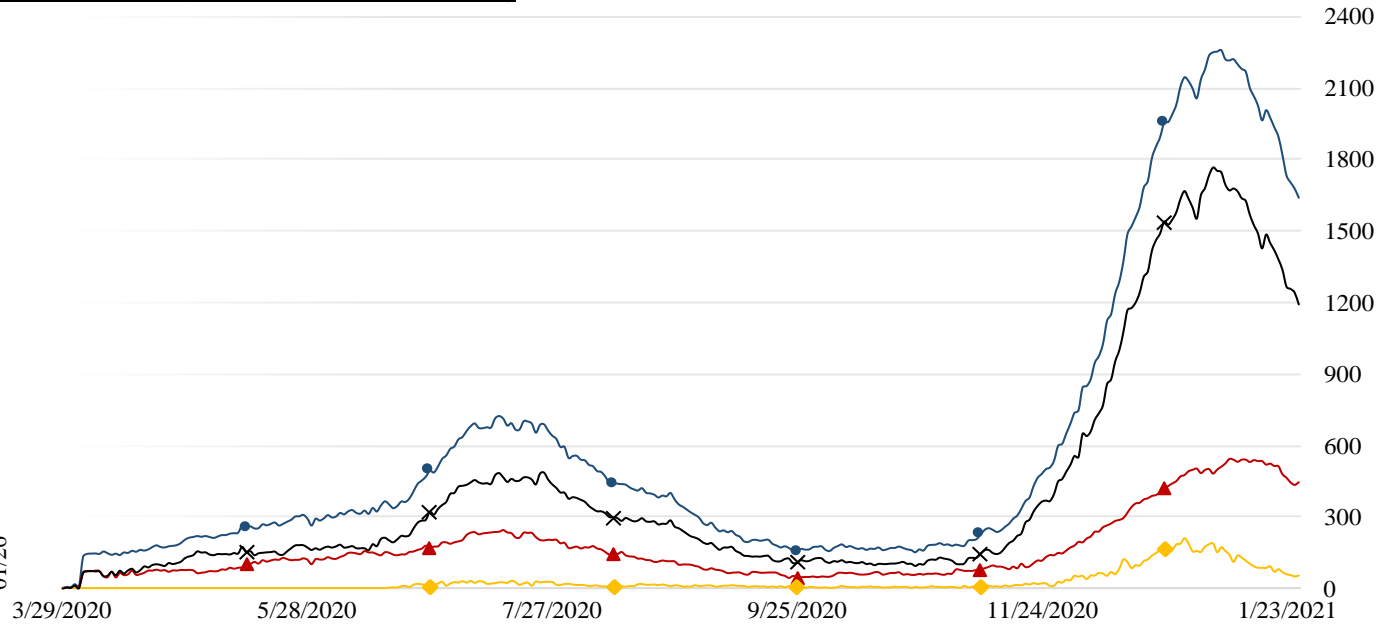
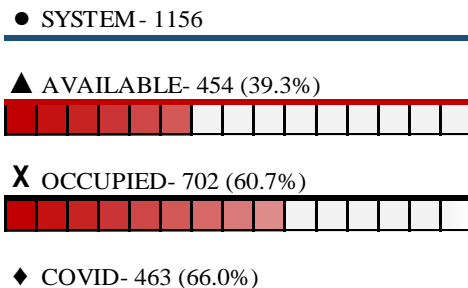


ICU SYSTEM CENSUS | (01/26/21)

*includes adult, PICU, NICU & other



VENTILATORS | (01/26/21)



1/26/21

COVID 19 ORANGE COUNTY HOSPITAL SYSTEM DATA (CA SNOWFLAKE SERVER)

7 DAY HISTORY BED OCCUPANCY | 01/26/2021

● **SYSTEM BEDS (INCLUDES SURGE)- 7191**

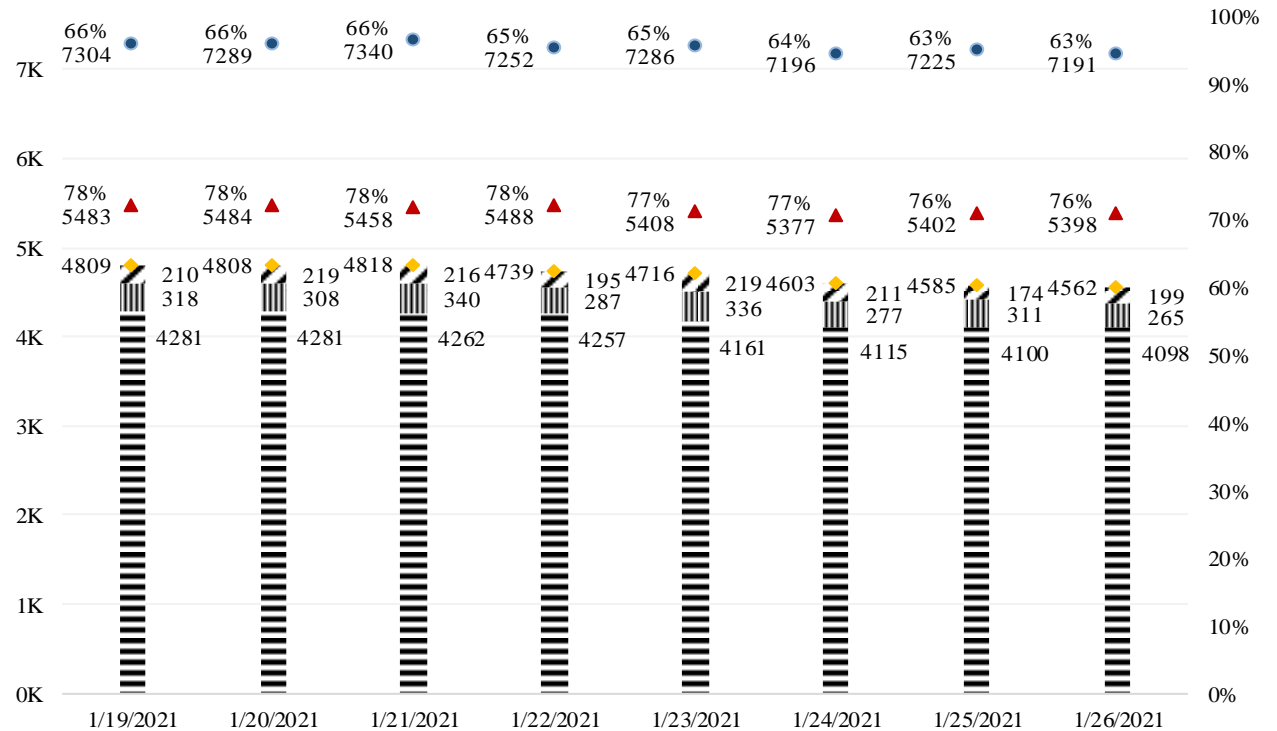
◆ **INPATIENT INCLUDING SURGE- 4562 (63.4%)**

▤ **SURGE NON ICU INPATIENT- 265**

▨ **SURGE ICU INPATIENT- 199**

▲ **NON SURGE INPATIENT BEDS- 5398**

▤ **NON SURGE INPATIENT- 4098 (75.9%)**



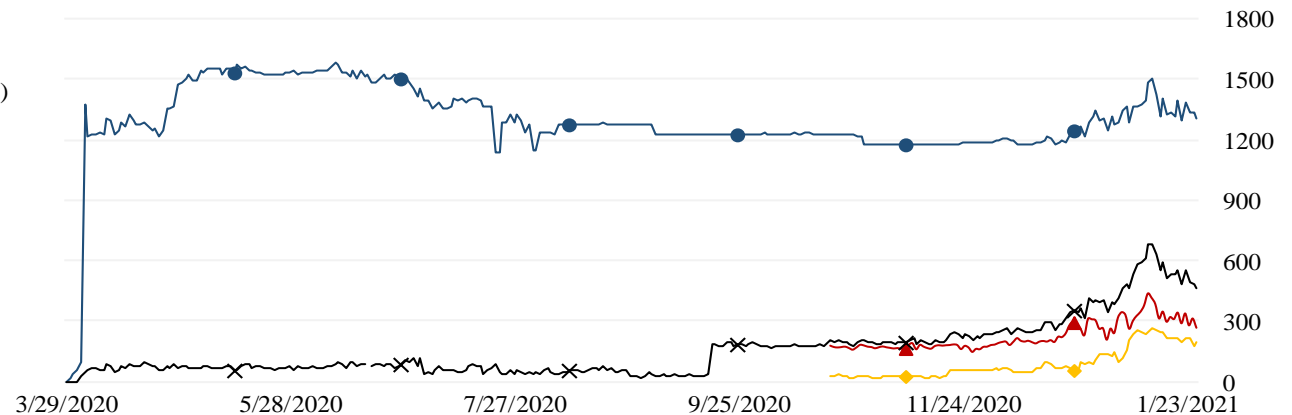
SURGE CENSUS | 01/26/2021

● **SURGE BED SYSTEM- 1301 (ICU- 227 | NON ICU- 1074)**

✕ **SURGE BED PATIENTS SYSTEM- 464 (35.7%)**

▲ **SURGE BED NON ICU PATIENTS- 265 (24.7%)**

◆ **SURGE BED ICU PATIENTS- 199 (87.7%)**



1/26/21

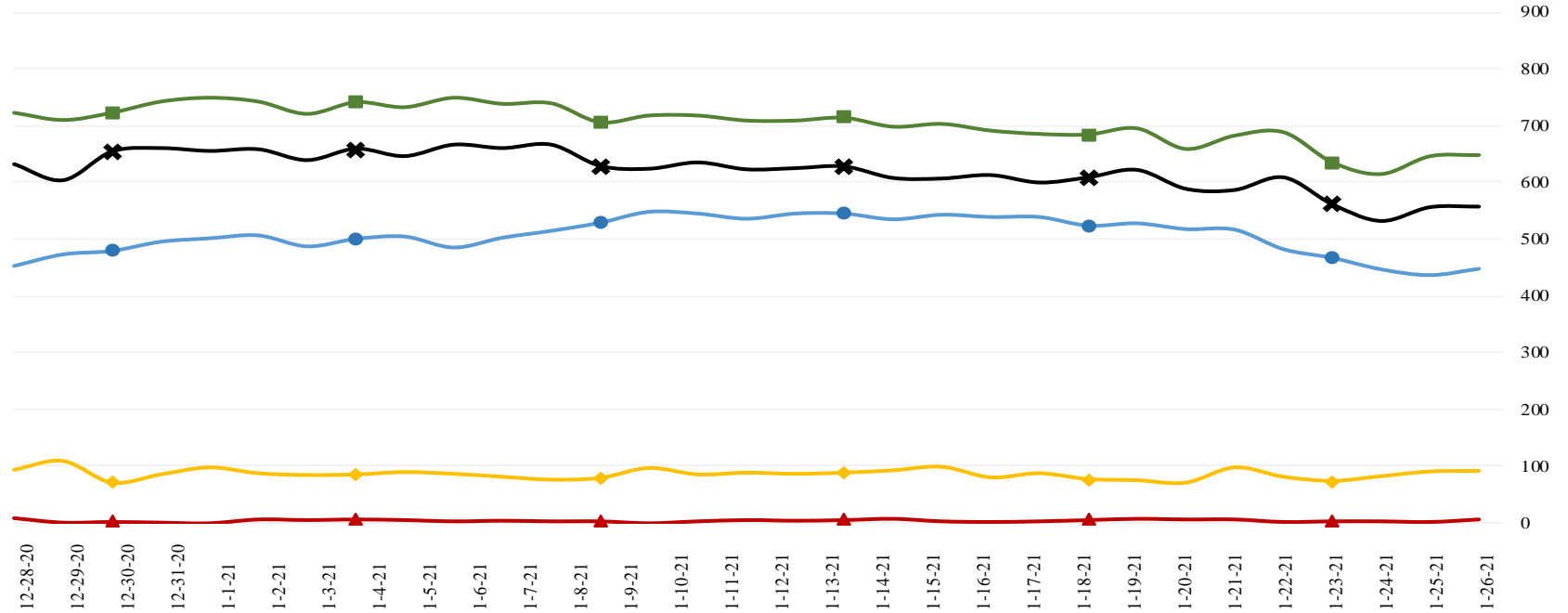
COVID 19 ORANGE COUNTY HOSPITAL SYSTEM DATA (CA SNOWFLAKE SERVER)

NON SURGE ICU BEDS: ADULT & Peds COMBINED (12/28/20 - 01/26/21) | 33 ACUTE CARE FACILITIES REPORTING

ICU INSIGHTS

12-28-20 thru 01-26-21:

- Confirmed COVID+ in ICU decreased by -5.3%
- ▲ Confirmed suspect in ICU increased by 500.0%
- ✕ Occupied ICU decreased by -7.6%
- ◆ Available ICU decreased by -15.9%
- System ICU decreased by -8.9%



	12-28-20	12-29-20	12-30-20	12-31-20	1-1-21	1-2-21	1-3-21	1-4-21	1-5-21	1-6-21	1-7-21	1-8-21	1-9-21	1-10-21	1-11-21	1-12-21	1-13-21	1-14-21	1-15-21	1-16-21	1-17-21	1-18-21	1-19-21	1-20-21	1-21-21	1-22-21	1-23-21	1-24-21	1-25-21	1-26-21
● CONFIRMED	473	479	495	501	506	487	500	504	485	502	514	528	547	544	535	544	544	534	542	538	538	523	527	517	516	482	467	447	437	448
<i>Adult</i>	470	474	491	496	495	481	494	497	479	496	508	522	541	539	531	539	538	531	540	537	536	520	524	513	512	477	465	437	435	446
<i>Peds</i>	3	5	4	5	11	6	6	7	6	6	6	6	6	5	4	5	6	3	2	1	2	3	3	4	4	5	2	10	2	2
▲ SUSPECTED	1	2	1	0	6	5	6	5	3	4	3	3	0	3	5	4	5	7	3	2	3	5	7	6	6	2	3	3	2	6
<i>Adult</i>	1	2	1	0	2	3	4	3	2	4	3	3	0	2	5	4	5	6	3	2	3	5	5	5	3	1	3	3	2	6
<i>Peds</i>	0	0	0	0	4	2	2	2	1	0	0	0	0	1	0	0	0	1	0	0	0	0	2	1	3	1	0	0	0	0
✕ OCCUPIED	603	653	659	654	657	638	658	645	665	659	665	628	623	634	622	624	627	607	606	612	599	608	621	588	586	608	561	532	556	557
<i>Adult</i>	578	609	628	624	623	605	628	625	635	630	638	601	605	608	597	599	601	587	586	591	578	584	595	560	557	578	531	509	532	535
<i>Peds</i>	25	44	31	30	34	33	30	20	30	29	27	27	18	26	25	25	26	20	20	21	21	24	26	28	29	30	30	23	24	22
◆ SYSTEM AVL	107	70	84	96	86	83	84	88	85	80	75	78	95	84	87	85	87	91	97	79	86	76	74	70	96	80	73	81	89	90
<i>Adult</i>	64	46	47	58	52	48	46	40	47	41	34	37	45	42	44	48	51	49	55	38	45	38	38	36	63	48	48	49	58	57
<i>Peds</i>	43	24	37	38	34	35	38	48	38	39	41	41	50	42	43	37	36	42	42	41	41	38	36	34	33	32	25	32	31	33
■ SYSTEM TTL	710	723	743	750	743	721	742	733	750	739	740	706	718	718	709	709	714	698	703	691	685	684	695	658	682	688	634	613	645	647
<i>Adult</i>	642	655	675	682	675	653	674	665	682	671	672	638	650	650	641	647	652	636	641	629	623	622	633	596	620	626	579	558	590	592
<i>Peds</i>	68	68	68	68	68	68	68	68	68	68	68	68	68	68	68	62	62	62	62	62	62	62	62	62	62	62	55	55	55	55

1/26/21

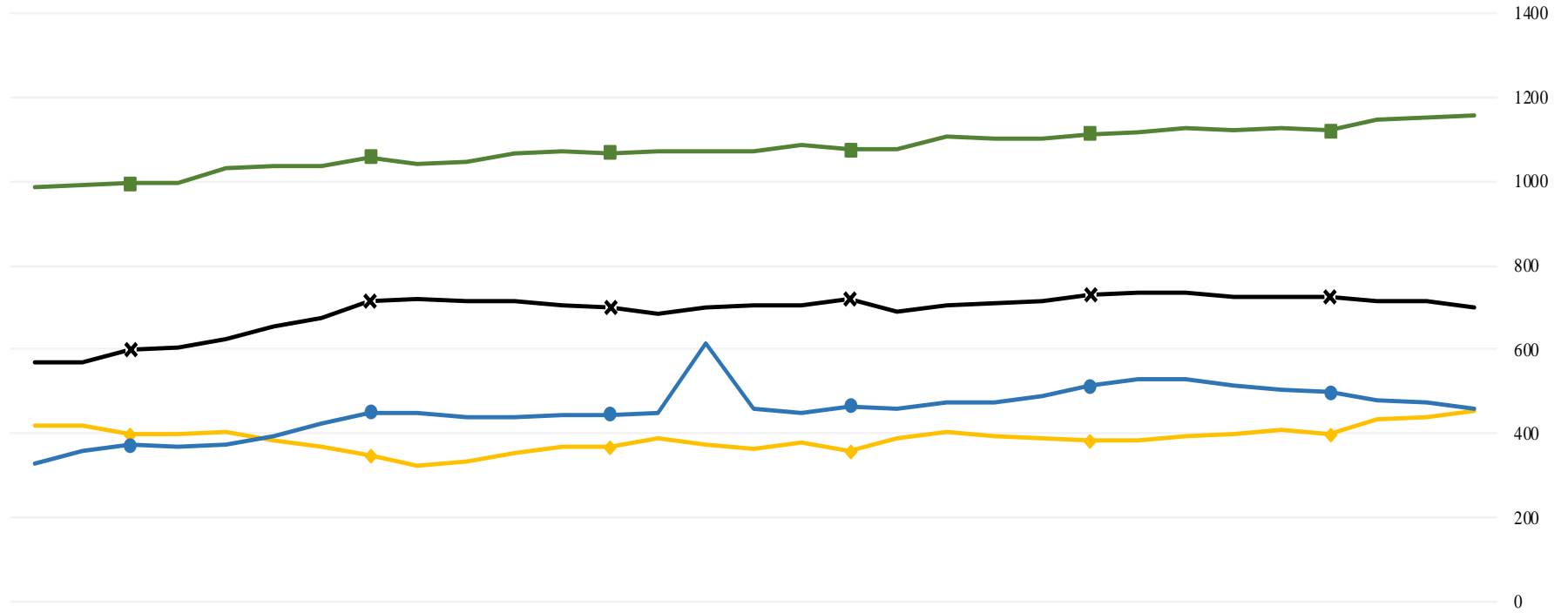
COVID 19 ORANGE COUNTY HOSPITAL SYSTEM DATA (CA SNOWFLAKE SERVER)

VENTILATORS (12/28/20 - 01/26/21) | 33 ACUTE CARE FACILITIES REPORTING

VENTILATOR INSIGHTS

12-28-20 thru 01-26-21:

- Confirmed COVID+ patients on ventilators increased by 27.5%
- X Occupied ventilators increased by 23.2%
- ◆ System available ventilators increased by 8.1%
- Total system ventilators increased by 16.8%



	12-28-20	12-29-20	12-30-20	12-31-20	1-1-21	1-2-21	1-3-21	1-4-21	1-5-21	1-6-21	1-7-21	1-8-21	1-9-21	1-10-21	1-11-21	1-12-21	1-13-21	1-14-21	1-15-21	1-16-21	1-17-21	1-18-21	1-19-21	1-20-21	1-21-21	1-22-21	1-23-21	1-24-21	1-25-21	1-26-21
● CONFIRMED	360	371	368	373	395	425	449	450	440	440	442	445	448	612	458	448	464	459	473	472	487	512	531	528	513	502	498	480	473	459
X OCCUPIED	570	599	602	626	652	672	713	720	717	715	704	702	687	699	707	706	721	690	703	710	716	731	733	733	727	723	725	714	714	702
◆ SYSTEM AVL	420	396	396	404	385	367	345	324	332	351	366	366	386	374	364	379	355	388	405	394	386	382	384	393	397	406	396	435	437	454
■ SYSTEM TTL	990	995	998	1030	1037	1039	1058	1044	1049	1066	1070	1068	1073	1073	1071	1085	1076	1078	1108	1104	1102	1113	1117	1126	1124	1129	1121	1149	1151	1156

*Data Source: California Department of Public Health (CDPH) – Snowflake server

**Current Snowflake Data Dictionary may be found at:

https://www.calhospital.org/sites/main/files/file-attachments/data_dictionary_cha_covid_tracker_4-17-20.pdf

Acute Care Hospital PPE / Ventilator Supplies Days on Hand – (30/33 ACHs reported)

Reporting Date: 1/26/21*	30 days +	15-30 days	7-14 days	4-6 days	0-3 days	Not Reported
Ventilator Supplies**	8	6	14	2	0	3
N95 Masks**	19	10	0	0	0	4
Surgical Masks**	22	6	1	0	0	4
Face Shields**	18	4	3	4	0	4
Gloves**	13	7	4	2	3	4
Gowns**	15	7	5	0	2	4

Hospital Criteria for shifting to Crisis Care Strategies

LEGEND

STATUS

CRITERIA	STATUS		
	Normal Operations	Modified Operations	Modified Operations Assistance Needed
Rate of change in Hospitalized COVID-19 patients (doubling time over last 7 days)	Never to 4 weeks to double	4 weeks to 2 weeks to double	Less than 2 weeks to double
Absolute COVID-19 Census in the hospitals across Orange County	Less than 750	750-1500	>1500
Hospital census as a percentage of staffed capacity	<80%	80% to 90%	>90%
Hospital ICU census as a percentage of staffed ICU capacity	<70%	70% to 85%	>85%

Hospital Criteria for shifting to Crisis Care Strategies

1/26/21

STATUS

CRITERIA	STATUS		
	Normal Operations	Modified Operations Under Control	Modified Operations Assistance Needed
Rate of change in Hospitalized COVID-19 patients (doubling time over last 7 days)	Declining		
Absolute COVID-19 Census in the hospitals across Orange County			1639
Hospital census as a percentage of staffed capacity	76%		
Hospital ICU census as a percentage of staffed ICU capacity			86%

AGENCY OPERATIONS CENTER / LOGISTICS SECTION

- The AOC is activated M-F 0900-1600 at Level I; Warehouse Ops are M-F - 0900-1600.
- SCARCE Resources: Gloves, Wipes, Syringes, Needles

Total Activity – Updated 1/26/21 at 1530

INQUIRIES	RR RECEIVED	RR FILLED
17,800 +42	10,410 +58	8,432 +51
Total Denied Requests: 864 / Total Redacted Requests: 911		

Logistics Daily Units Distributed 1/26/21

N95 Mask	4,360
Surgical Mask	1,250
Gown	3,500
Gloves	131,100
Face Shields/Eye Protection	3,040
Hand Sanitizer	32
Other	500
Total Units	143,782

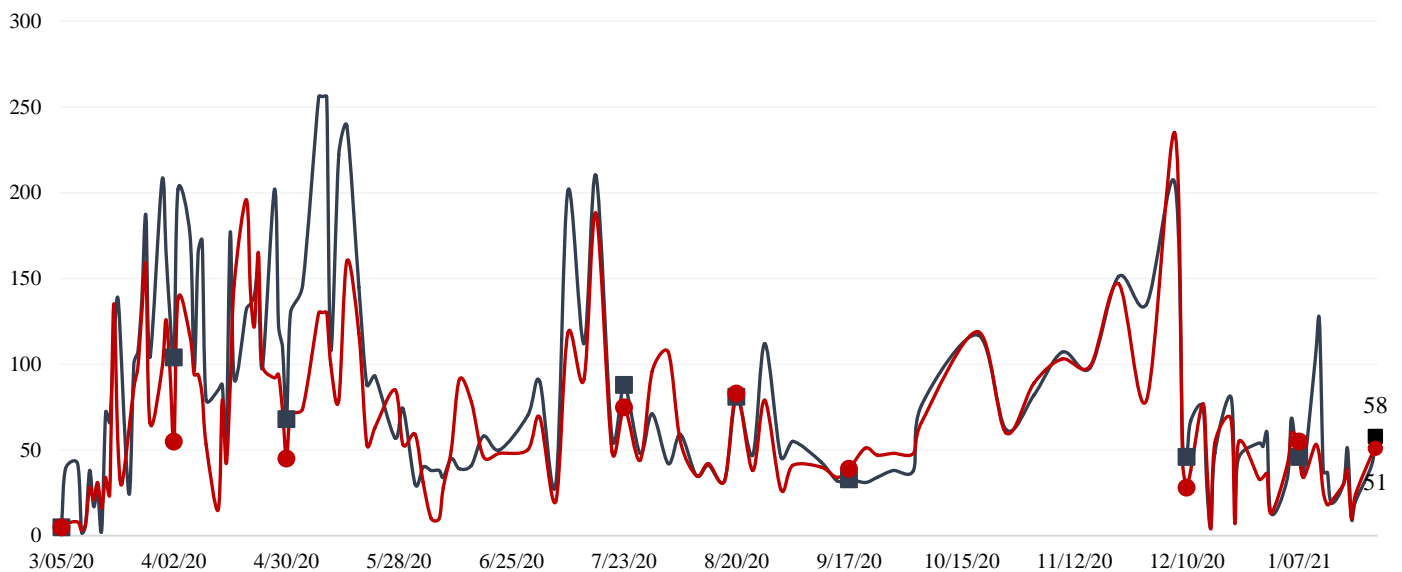
Inventory Report February 18 to January 26, 2021

Medical Supply/Equipment Total Units Distributed

N95 Mask	5,097,975
Surgical Mask	2,018,205
Gowns	2,791,416
PPE-Suit	17,965
Gloves	6,026,650
Eye Protection	413,009
Hand Sanitizer	313,123
Other Items	2,434,009
Total Units	19,112,352

Resource Requests - Updated 1/26/21 at 1530

Received ■ Filled ●



ALTERNATE CARE SITE (ACS)

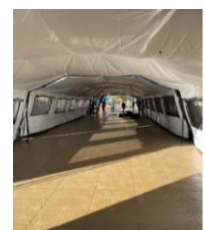
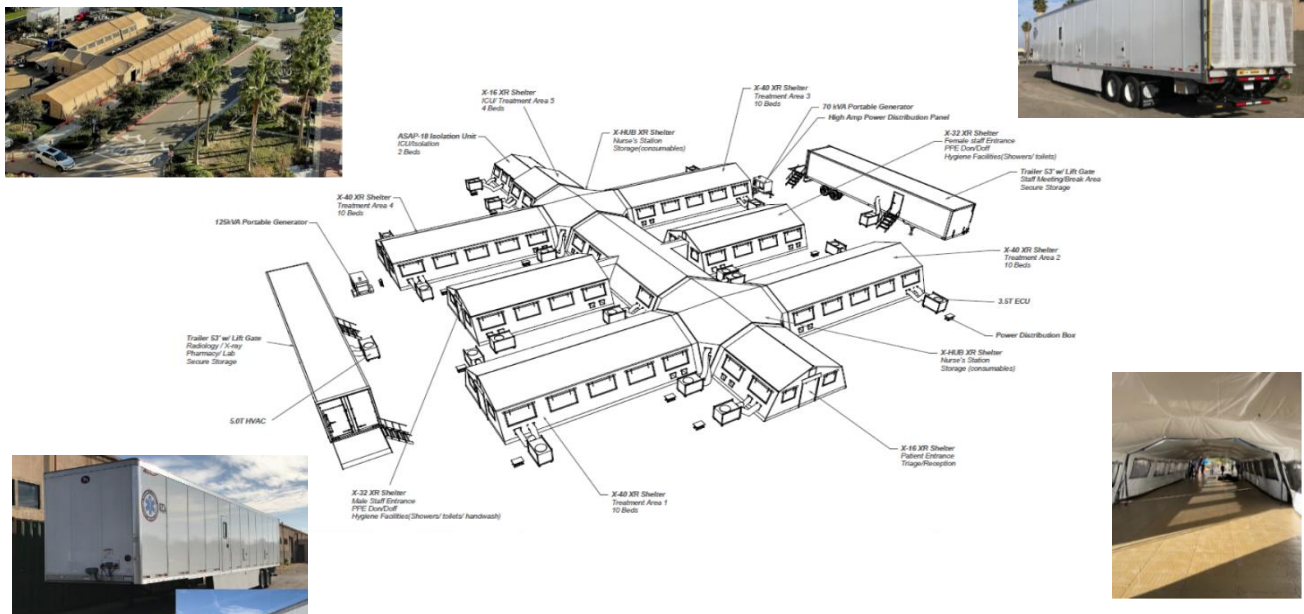
- Fairview Alternate Care Site (FACS) opened for admissions on **TUESDAY, 12/15/20 @ 1800**
- FACS Admissions Guidelines (updated 12.16.20) may be found on the OCEMS website at: <https://www.healthdisasteroc.org/civicax/filebank/blobload.aspx?BlobID=118724>

Fairview (COVID-19 +)		
Patient Census (as of 1/27/2021 09:00)	CURRENT	TOTAL
Orange County	19	90
LA County	8	51
Riverside	1	4
San Bernadino County	1	3
Total patients CENSUS / TOTAL ACCEPTED	29	148
Patients Discharged		TOTAL
DISCHARGED		119
Memory Care Unit (MCU) Census (as of 1/26/2021 17:00)		
MCU Patient Census	19	35
Patients Discharged from MCU		TOTAL
MCU - DISCHARGED		16

MOBILE FIELD HOSPITALS

- MFHs are capable of expanding current hospital capacity by adding additional patient beds.
- They are large heavy duty canvas tents with hard flooring and temperature controlled units.
- They can be configured in a myriad of footprints and sizes (i.e. 25-200 bed).
- CDPH is primed and ready to provide hospitals a waiver to allow emergency use of this MFH facility.
- OCEMS is actively deploying multiple MFHs to OC hospitals prepared to receive & operate
 - OCEMS has a total of 8 trailers to support at minimum, 200 patient beds.
 - Hospitals who have self-identified in receiving a MFH include:

- **UCI (50 bed) – confirmed**
- **Fountain Valley (25 bed) – confirmed**
- **Los Alamitos (25 bed) – confirmed**
- **Saint Jude (50 bed) – confirmed**



MOBILE FIELD HOSPITALS

