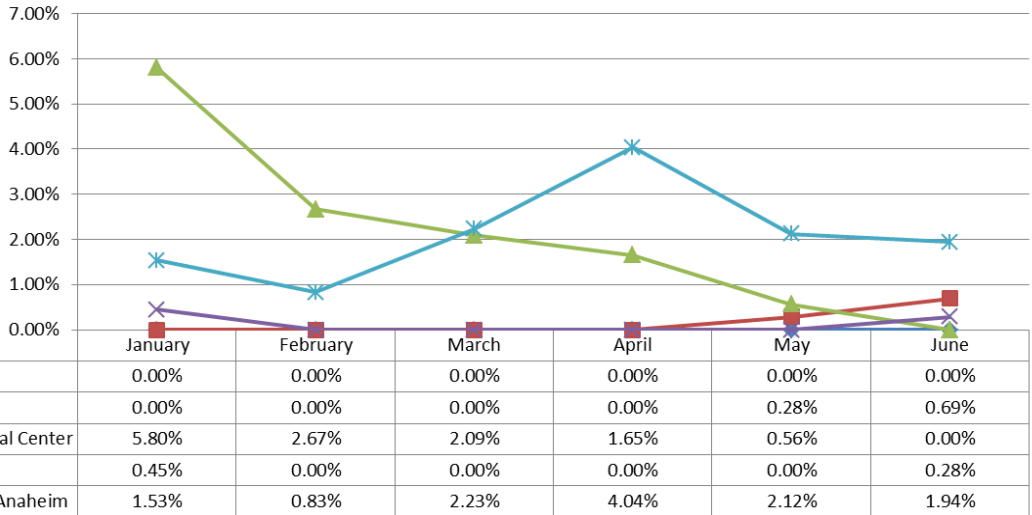


**Receiving Centers  
2014 Diversion Report- 2<sup>nd</sup> Quarter**

**North Area- 2014 ERC Diversion**



**North Area Includes:**

Placentia Linda Hospital  
St. Jude Medical Center  
Anaheim Regional Medical Center  
Kaiser Anaheim  
Western Medical Center Anaheim

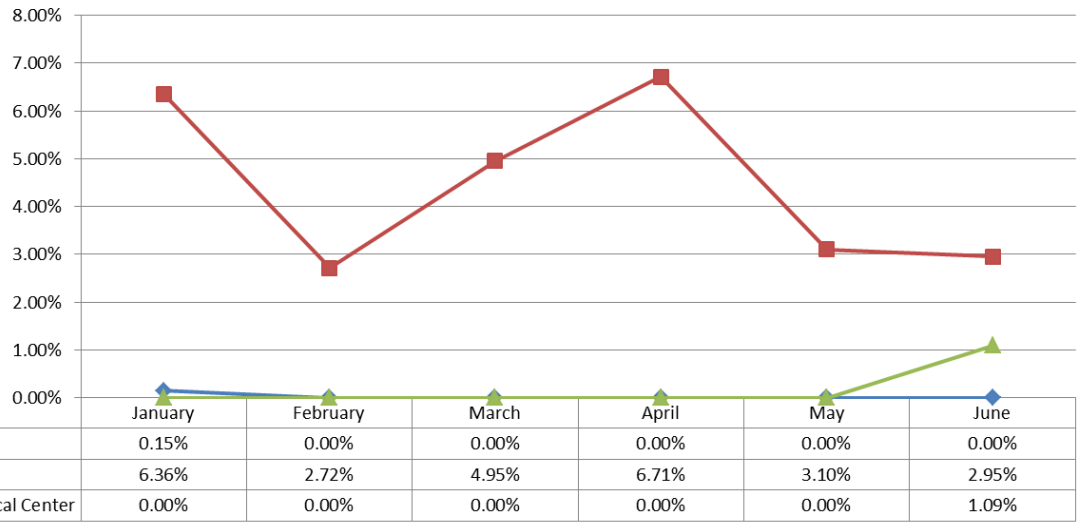
	January	February	March	April	May	June
Placentia Linda	0.00%	0.00%	0.00%	0.00%	0.00%	0.00%
St. Jude Medical Center	0.00%	0.00%	0.00%	0.00%	0.28%	0.69%
Anaheim Regional Medical Center	5.80%	2.67%	2.09%	1.65%	0.56%	0.00%
Kaiser Anaheim	0.45%	0.00%	0.00%	0.00%	0.00%	0.28%
Western Medical Center Anaheim	1.53%	0.83%	2.23%	4.04%	2.12%	1.94%

Month

**West Area Includes:**

La Palma Hospital  
Los Alamitos  
West Anaheim Medical Center

**West Area - 2014 ERC Diversion**

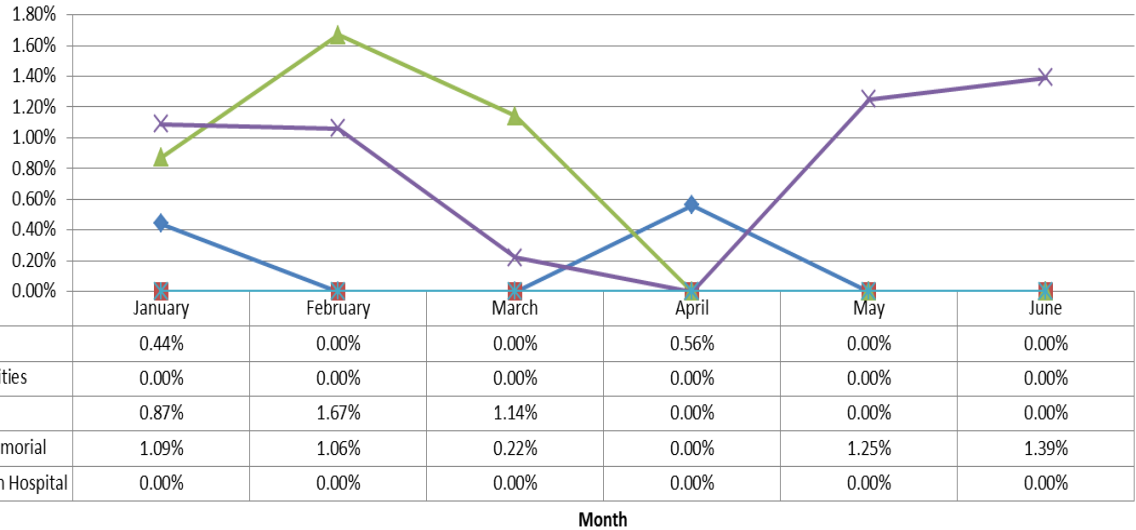


	January	February	March	April	May	June
La Palma Hospital	0.15%	0.00%	0.00%	0.00%	0.00%	0.00%
Los Alamitos	6.36%	2.72%	4.95%	6.71%	3.10%	2.95%
West Anaheim Medical Center	0.00%	0.00%	0.00%	0.00%	0.00%	1.09%

Month

**Receiving Centers  
2014 Diversion Report- 2<sup>nd</sup> Quarter**

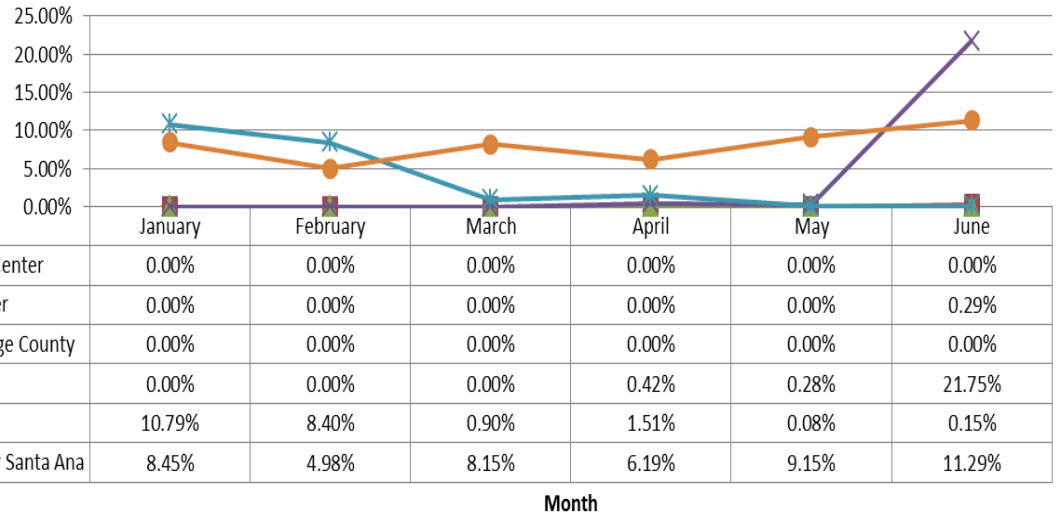
**Coastal Area- 2014 ERC Diversion**



**Coastal Area Includes:**

Hoag Hospital Newport Beach  
Coastal Communities Hospital  
Fountain Valley Hospital  
Orange Coast Memorial Medical Center  
Huntington Beach Hospital

**Central Area- 2014 ERC Diversion**

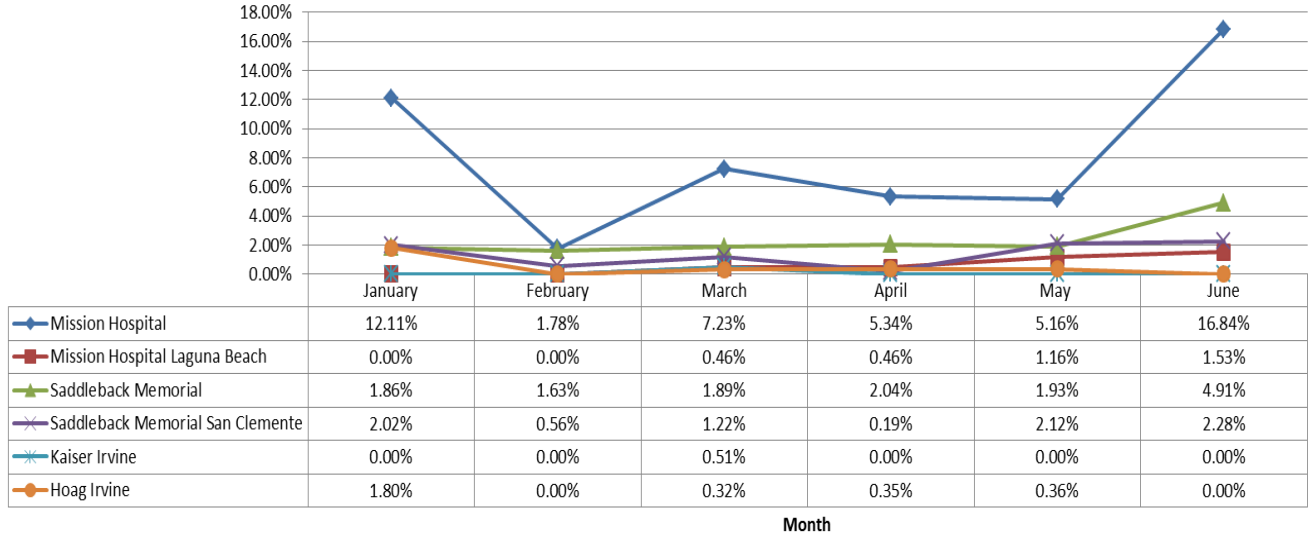


**Central Area Includes:**

Garden Grove Medical Center  
Chapman Medical Center  
Children's Hospital Orange County  
St. Joseph Hospital  
UCI  
Western Medical Center Santa Ana

**Receiving Centers  
2014 Diversion Report- 2<sup>nd</sup> Quarter**

**South Area- 2014 ERC Diversion**

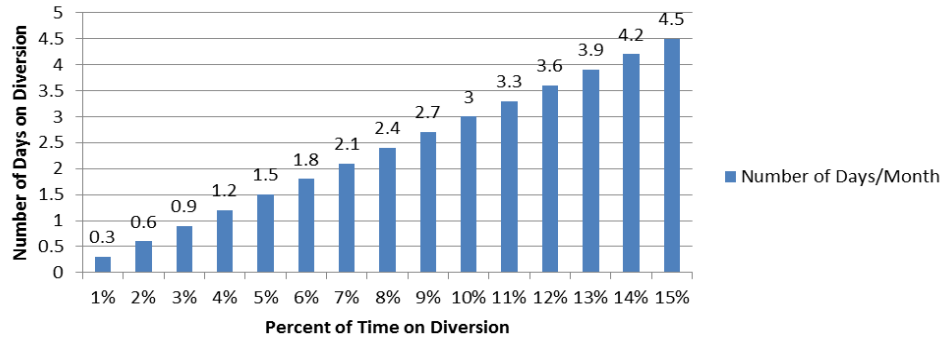


**Southern Area Includes:**

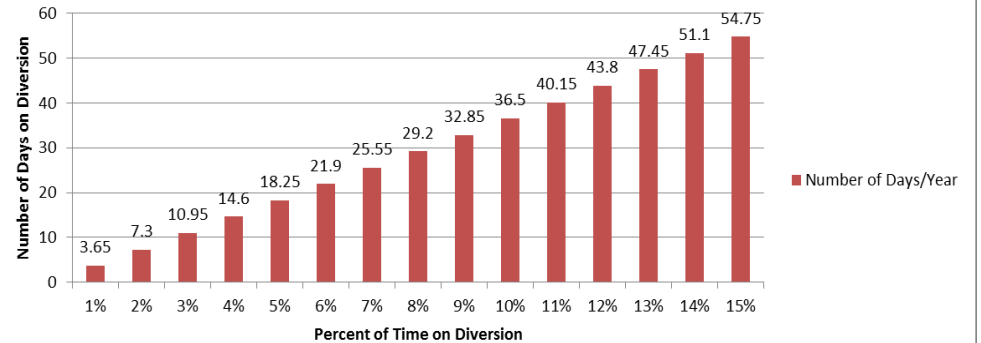
- Mission Hospital- Mission Viejo
- Mission Hospital- Laguna Beach
- Saddleback Memorial Medical Center Laguna Hills
- Saddleback Memorial Medical Center San Clemente
- Kaiser Hospital- Irvine
- Hoag Hospital Irvine

The following tables demonstrate the monthly and annual impact of disclosure in the total number of days the ERC would not receive patients.

**Number of Days/Month on Diversion**



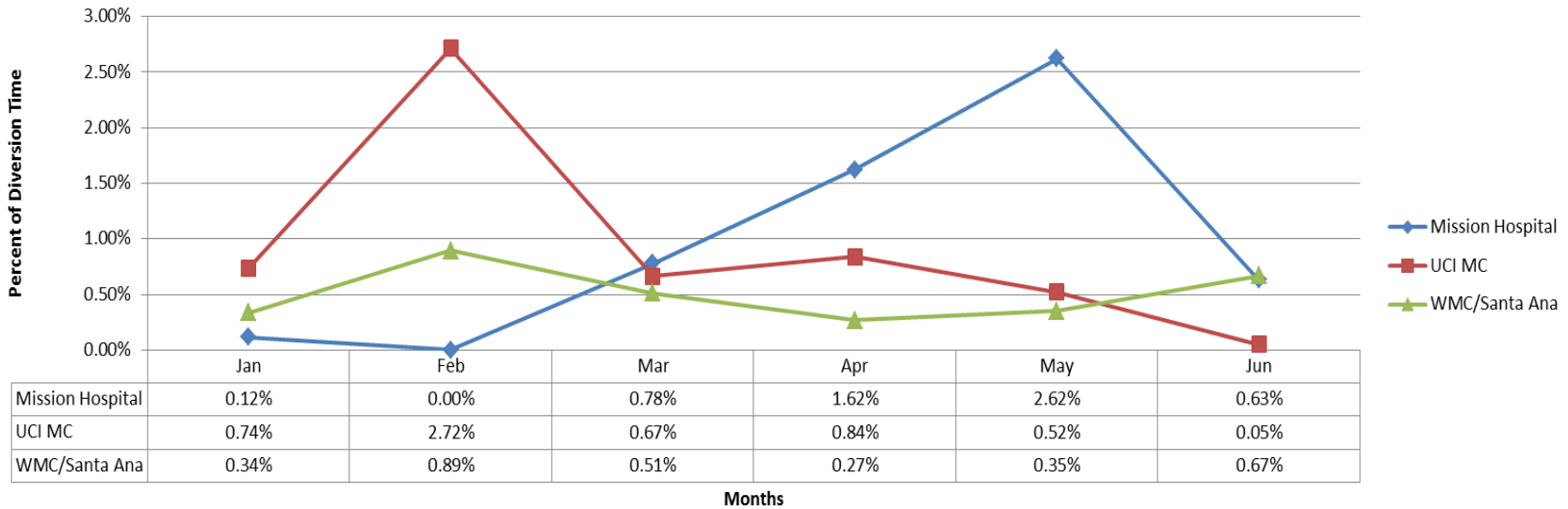
**Number of Days/Year on Diversion**



Note: Number of days/month based on 30 days in a month

**Receiving Centers  
2014 Diversion Report- 2<sup>nd</sup> Quarter**

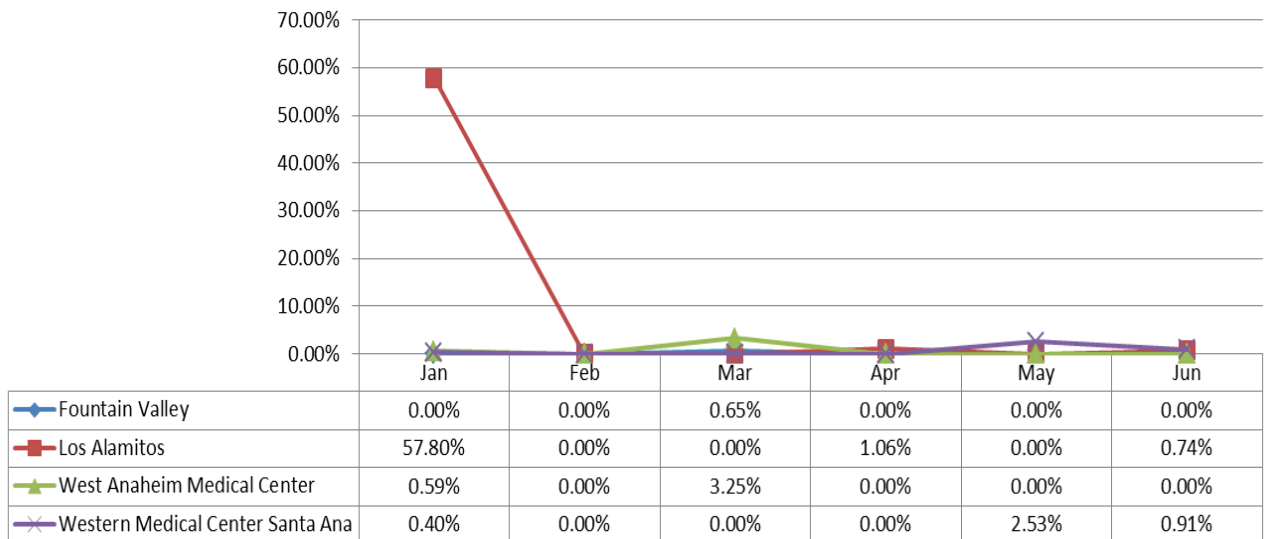
**Trauma Diversion Data 1st Qtr 2014**



**Cardiac Receiving Centers No Diversion  
Jan-June 2014**

- Anaheim Regional Medical Center
- Hoag Hospital Irvine
- Hoag Hospital Newport Beach
- Mission Hospital Mission Viejo
- Orange Coast Memorial Medical Center
- Saddleback Memorial Medical Center Laguna Hills
- St. Joseph Hospital
- St. Jude Medical Center
- UCI
- Western Medical Center Anaheim

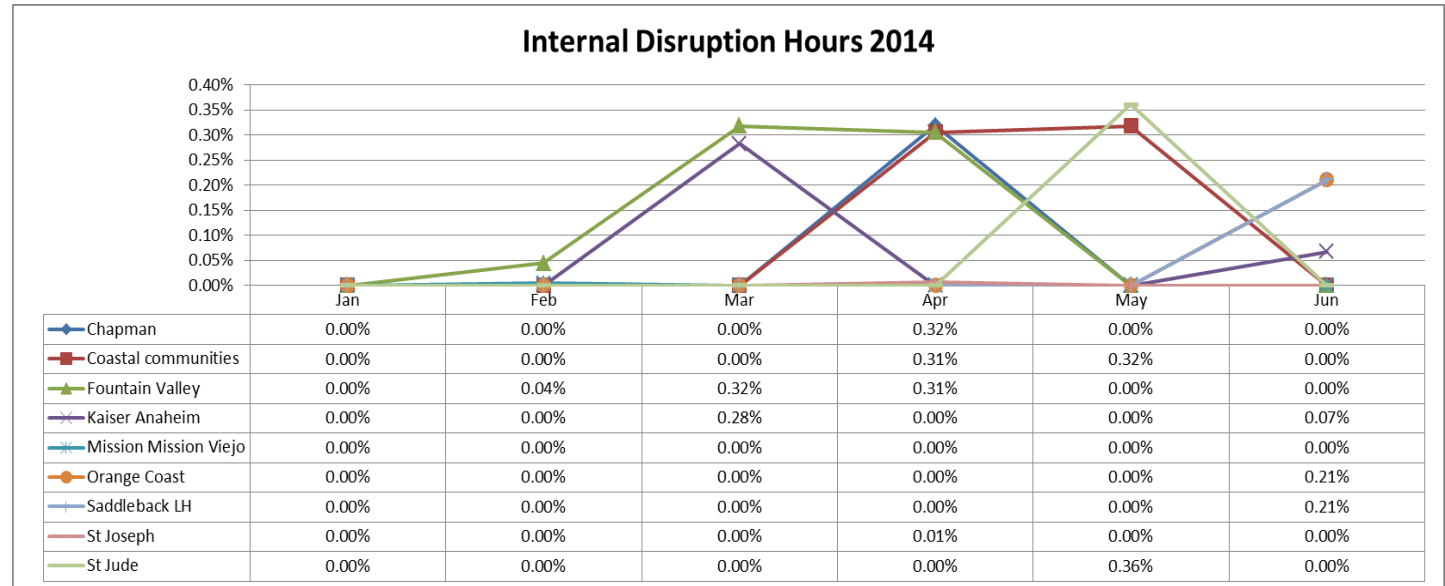
**CVRC's With Diversion Hours 2014**



**Receiving Centers  
2014 Diversion Report- 2<sup>nd</sup> Quarter**

**Internal Disruption Diversion  
Jan-June 2014**

9 of 25 facilities on Internal Disruption



**CT Diversion 2014**

**CT Diversion  
Jan-June 2014**

13 of 25 facilities on CT Disruption

<b>2014</b>	<b>Jan</b>	<b>Feb</b>	<b>Mar</b>	<b>Apr</b>	<b>May</b>	<b>Jun</b>
Anaheim Regional	0.48%	4.90%			0.30%	
Chapman				0.84%		
Coastal Communities					9.33%	1.89%
Fountain Valley			0.01%			
Garden Grove				0.71%	0.54%	
Hoag Hospital Irvine	0.33%	0.22%	0.33%	1.56%	0.55%	
Huntington Beach	0.82%	1.59%	2.34%		0.52%	
Kaiser- Anaheim			0.06%			
Kaiser- Irvine	0.11%	0.50%	0.73%			
La Palma	1.92%	2.13%	0.36%			
Los Alamitos		0.20%	0.28%	1.07%		
Mission - Laguna Beach	0.49%					
Orange Coast					0.05%	
WMC/Anaheim	0.07%	0.23%	3.38%	1.07%	2.57%	0.57%