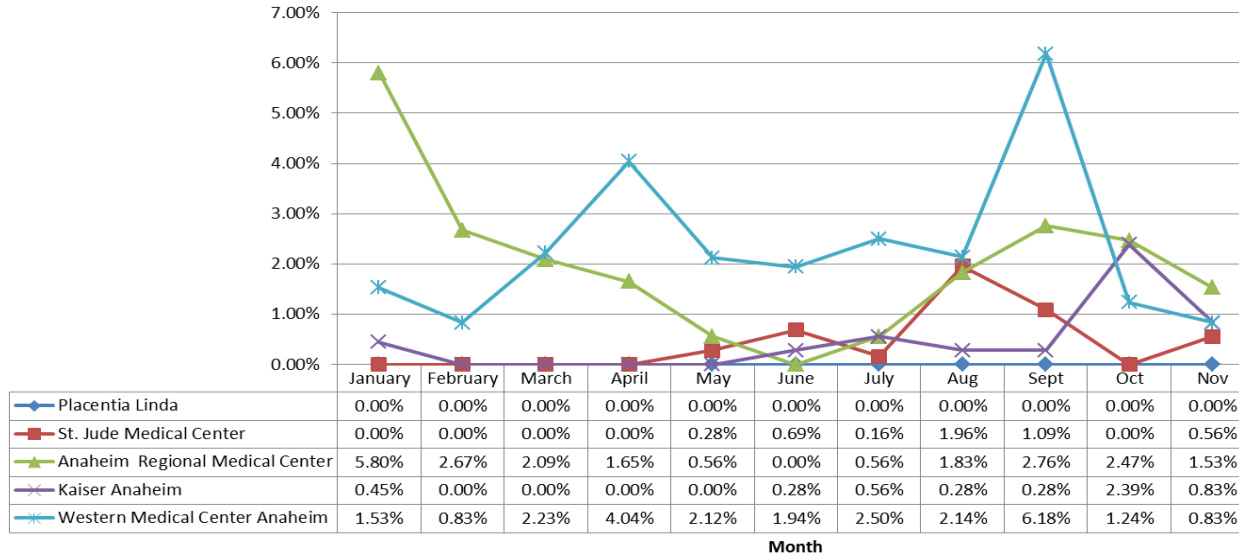




Orange County Emergency Medical Services Diversion Report – January through November- 2014



North Area- 2014 ERC Diversion



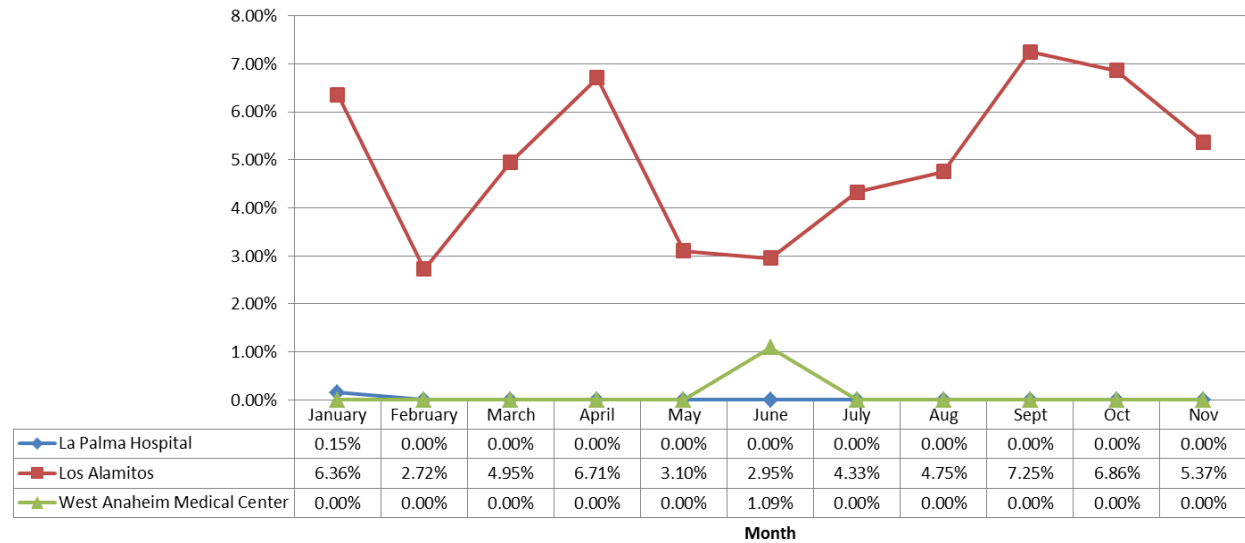
North Area Includes:

Placentia Linda Hospital
St. Jude Medical Center
Anaheim Regional Medical Center
Kaiser Anaheim
Western Medical Center Anaheim

West Area Includes:

La Palma Hospital
Los Alamitos Medical Center
West Anaheim Medical Center

West Area - 2014 ERC Diversion

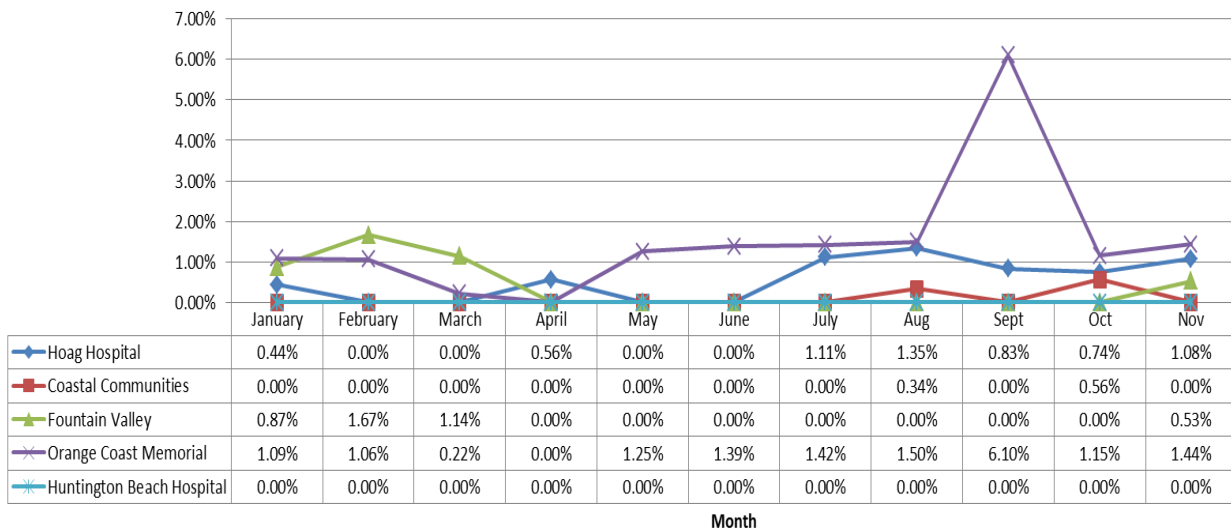




Orange County Emergency Medical Services Diversion Report – January through November- 2014



Coastal Area- 2014 ERC Diversion



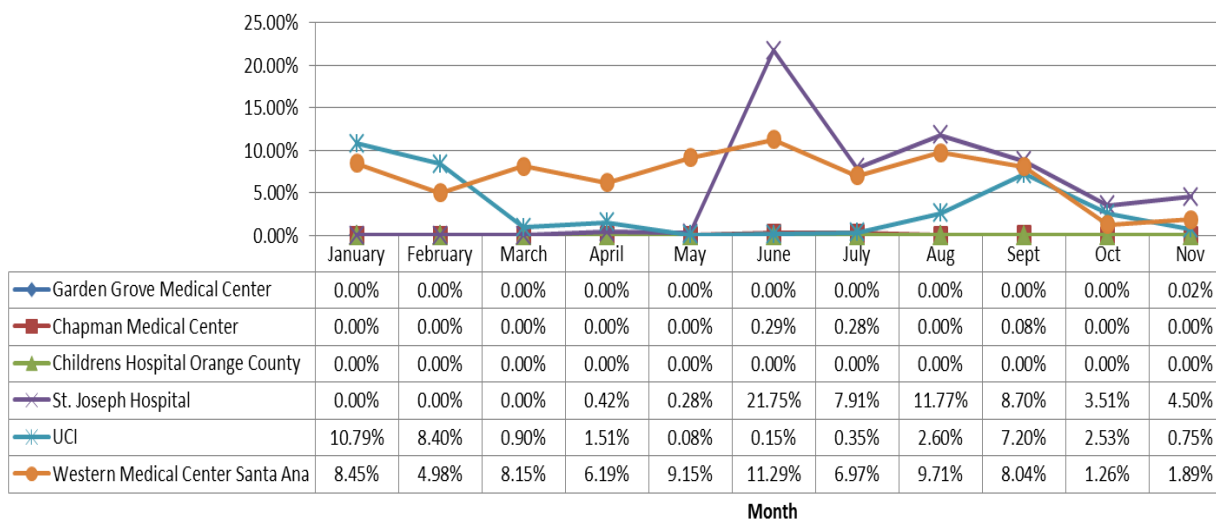
Coastal Area Includes:

- Hoag Hospital Newport Beach
- Coastal Communities Hospital
- Fountain Valley Hospital
- Orange Coast Memorial Medical Center
- Huntington Beach Hospital

Central Area Includes:

- Garden Grove Medical Center
- Chapman Medical Center
- Children’s Hospital Orange County
- St. Joseph Hospital
- UCI
- Western Medical Center Santa Ana

Central Area- 2014 ERC Diversion

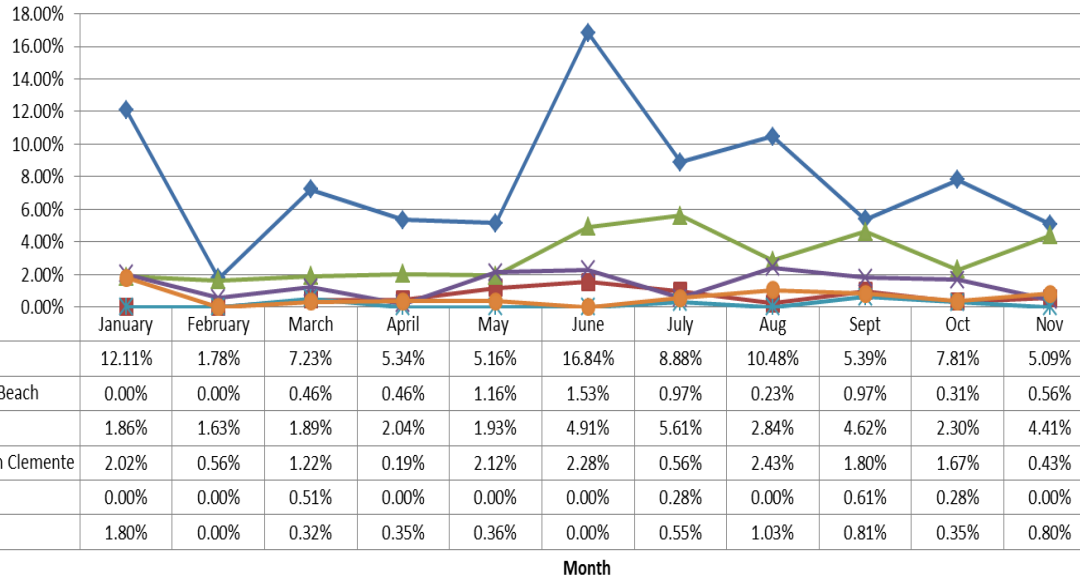




Orange County Emergency Medical Services Diversion Report – January through November- 2014



South Area- 2014 ERC Diversion

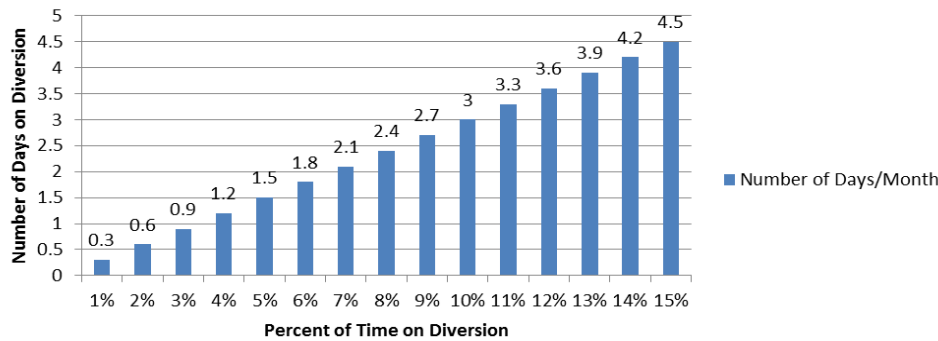


South Area Includes:

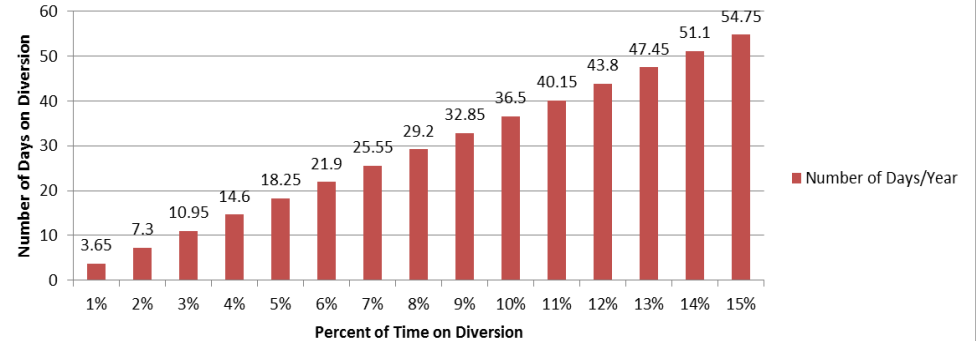
- Mission Hospital – Mission Viejo
- Mission Hospital – Laguna Beach
- Saddleback Memorial Medical Center Laguna Hills
- Saddleback Memorial Medical Center- San Clemente
- Kaiser Hospital – Irvine
- Hoag Hospital - Irvine

The following tables demonstrate the monthly and annual impact of disclosure in the total number of days the ERC would not receive patients.

Number of Days/Month on Diversion



Number of Days/Year on Diversion



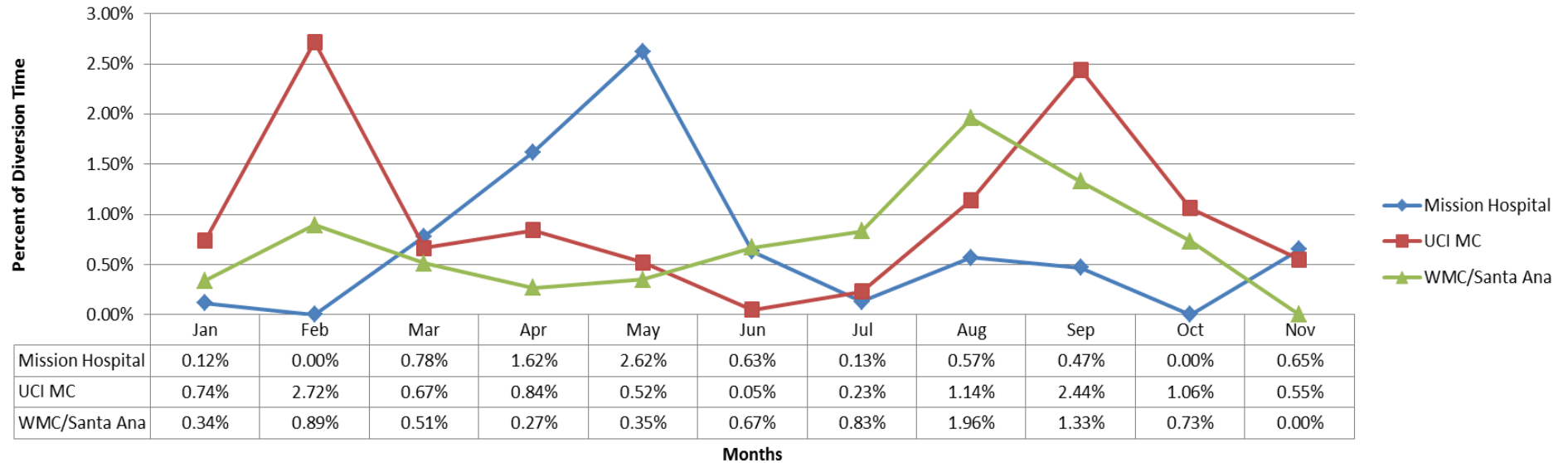
Note: Number of days/month based on 30 days in a month



Orange County Emergency Medical Services Diversion Report – January through November- 2014



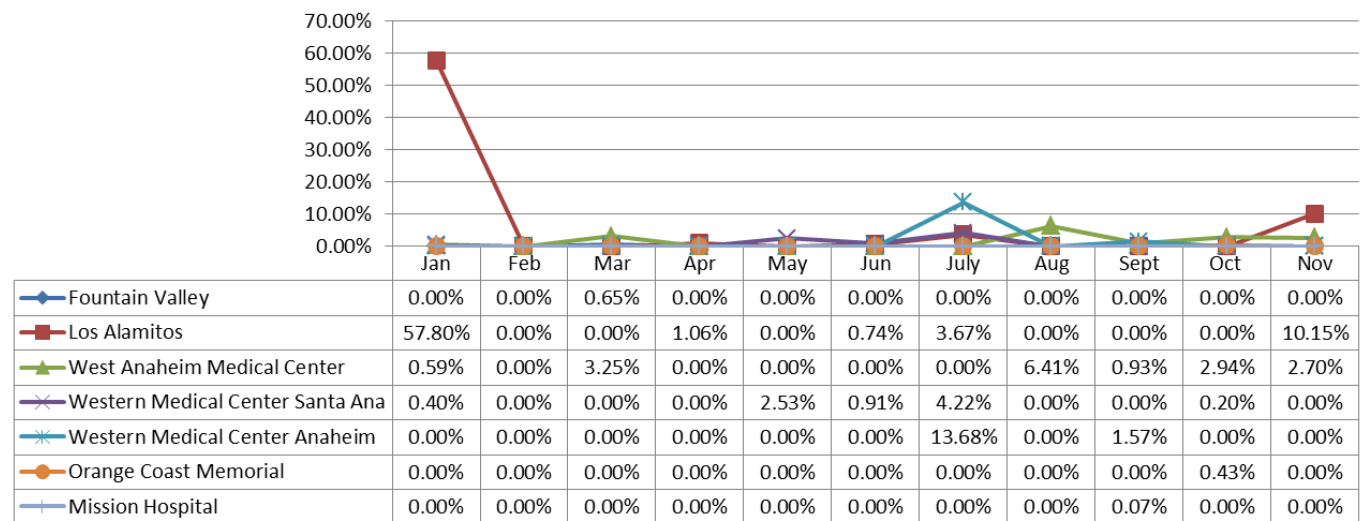
Trauma Diversion 2014



CVRC's with No Diversion Jan-Nov 2014

Anaheim Regional Medical Center
 Hoag Hospital Irvine
 Hoag Hospital Newport Beach
 Saddleback Memorial Medical Center
 St Joseph Hospital
 St Jude Medical Center
 UCI

CVRC's With Diversion Hours 2014





**Orange County Emergency Medical Services
Diversion Report – January through November- 2014**



Internal Disruption 2014	Jan	Feb	Mar	Apr	May	Jun	Jul	Aug	Sept	Oct	Nov
Anaheim Regional Med Ctr							0.15%				
Chapman Med Ctr				0.32%					0.11%		0.01%
CHOC									0.19%		
Coastal Comm Hosp				0.31%	0.32%					0.37%	
Fountain Valley		0.04%	0.32%	0.31%							
Garden Grove											
Hoag Irvine							0.71%				
Hoag Newport											
Huntington Beach							0.70%				
Kaiser Irvine							0.04%				
Kaiser Anaheim			0.28%			0.07%					
La Palma											
Los Alamitos											
Mission Hospital									0.07%		
Mission Laguna Beach								1.51%		0.17%	
Orange Coast Memorial						0.21%	0.06%				
Placentia Linda									0.09%		
Saddleback Laguna Hills						0.21%					
Saddleback San Clemente							0.07%				
St Joseph											0.84%
St Jude					0.36%						0.38%
UCI											
West Anaheim											
West Med Ctr - Anaheim										0.08%	
West Med Ctr - Santa Ana											

Internal Disruption

Internal Disruption Data for ERCs
January to November 2014

CT Diversion

17 of 25 ERCs on CT Diversion
January to November 2014

CT Diversion 2014	Jan	Feb	Mar	Apr	May	Jun	Jul	Aug	Sept	Oct	Nov
Anaheim Regional	0.48%	4.90%			0.30%		1.1%	2.7%	1.9%	0.9%	
Chapman				0.84%				0.6%	18.5%		
Coastal Communities					9.33%	1.89%	6.1%				
Fountain Valley			0.01%								
Garden Grove				0.71%	0.54%					0.5%	
Hoag Hospital Irvine	0.33%	0.22%	0.33%	1.56%	0.55%		1.3%	1.0%		0.4%	0.3%
Huntington Beach	0.82%	1.59%	2.34%		0.52%		0.2%				
Kaiser- Anaheim			0.06%							1.2%	
Kaiser- Irvine	0.11%	0.50%	0.73%								
La Palma	1.92%	2.13%	0.36%				2.4%			0.1%	
Los Alamitos		0.20%	0.28%	1.07%			2.5%	0.3%	0.1%		
Mission Hospital									0.1%		
Mission - Laguna Beach	0.49%							0.8%			
Orange Coast					0.05%						
Placentia Linda								0.2%			
Saddleback San Clemente								0.1%			
WMC/Anaheim	0.07%	0.23%	3.38%	1.07%	2.57%	0.57%	0.1%		0.1%	0.6%	1.0%