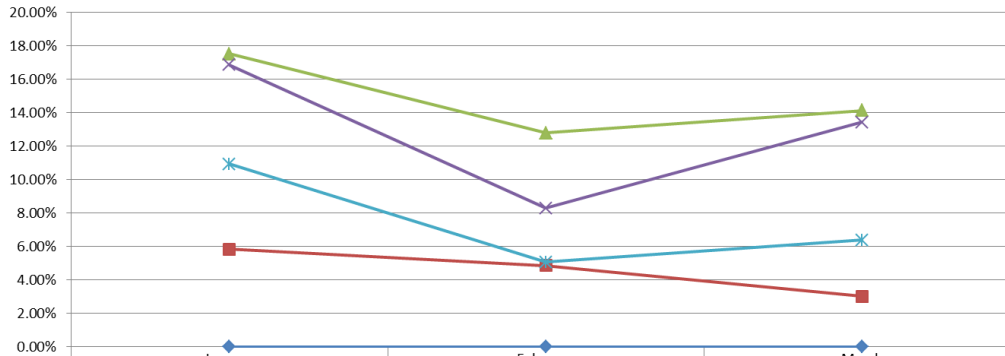




**Orange County  
Emergency Medical Services  
Diversion Report  
January 1 to March 31, 2015**

# Emergency Receiving Center Diversion- Percent of Time

**North Area- 2015 ERC Diversion**



◆ Placentia Linda	0.00%	0.00%	0.00%
■ St. Jude Medical Center	5.83%	4.86%	3.02%
▲ Anaheim Regional Medical Center	17.52%	12.79%	14.13%
✕ Kaiser Anaheim	16.85%	8.30%	13.42%
✕ Western Medical Center Anaheim	10.92%	5.06%	6.38%

Month

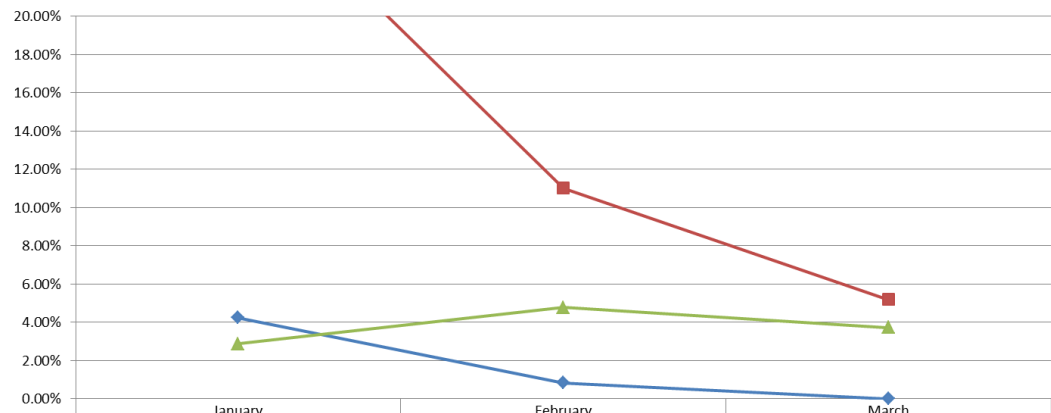
**North Area Includes:**

Placentia Linda Hospital  
 St. Jude Medical Center  
 Anaheim Regional Medical Center  
 Kaiser Anaheim  
 Western Medical Center Anaheim

**West Area Includes:**

La Palma Hospital  
 Los Alamitos Medical Center  
 West Anaheim Medical Center

**West Area - 2015 ERC Diversion**



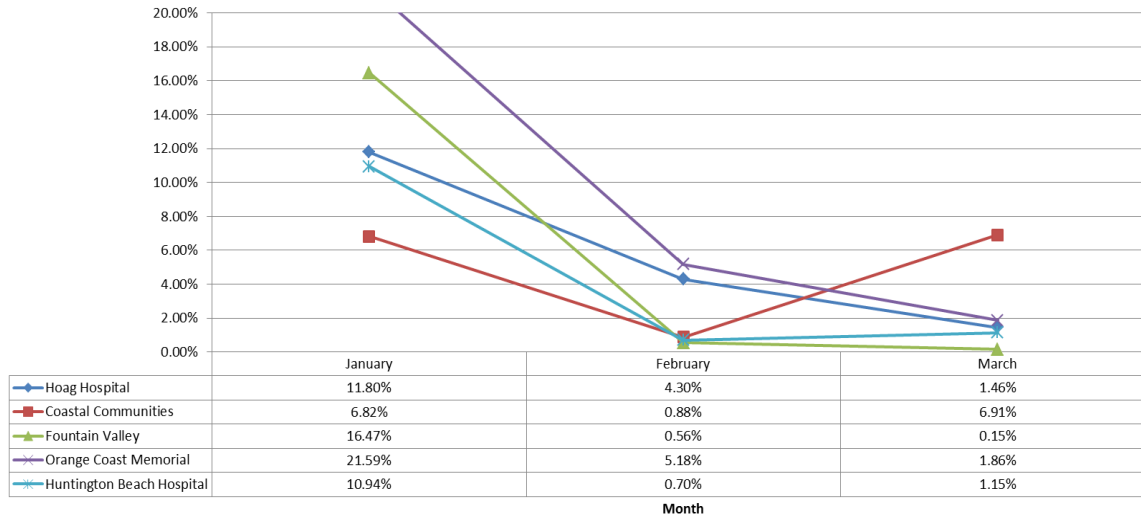
◆ La Palma Hospital	4.24%	0.83%	0.00%
■ Los Alamitos	27.65%	11.00%	5.18%
▲ West Anaheim Medical Center	2.87%	4.78%	3.72%

Month



# Emergency Receiving Center Diversion- Percent of Time

**Coastal Area- 2015 ERC Diversion**



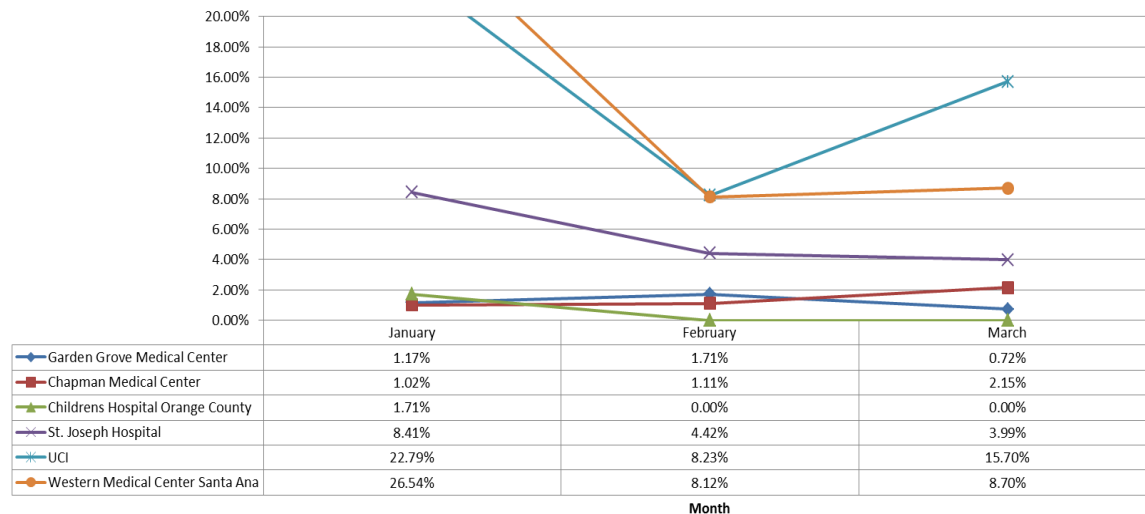
**Coastal Area Includes:**

- Hoag Hospital Newport Beach
- Coastal Communities Hospital
- Fountain Valley Hospital
- Orange Coast Memorial Medical Center
- Huntington Beach Hospital

**Central Area Includes:**

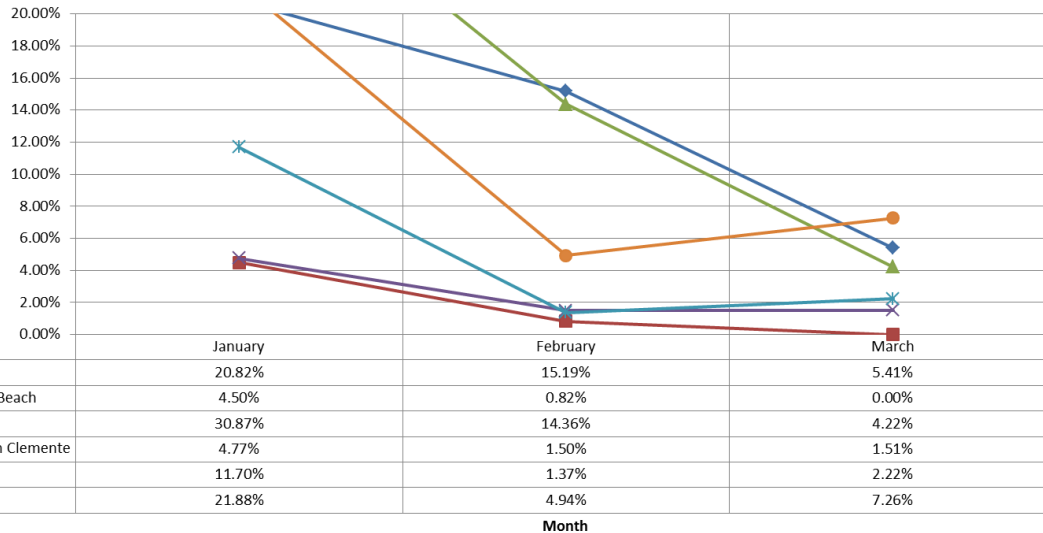
- Garden Grove Medical Center
- Chapman Medical Center
- Children's Hospital Orange County
- St. Joseph Hospital
- UCI
- Western Medical Center Santa Ana

**Central Area- 2015 ERC Diversion**



# Emergency Receiving Center Diversion- Percent of Time

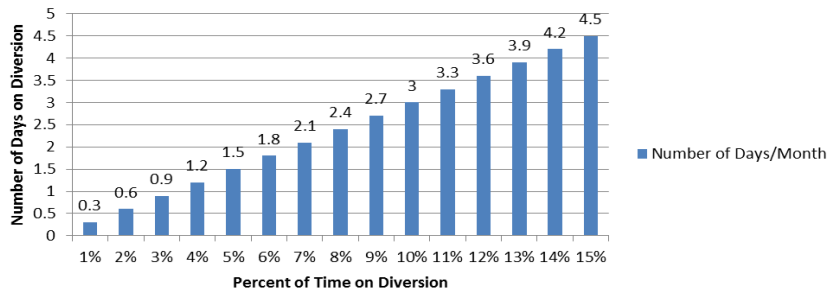
South Area- 2015 ERC Diversion



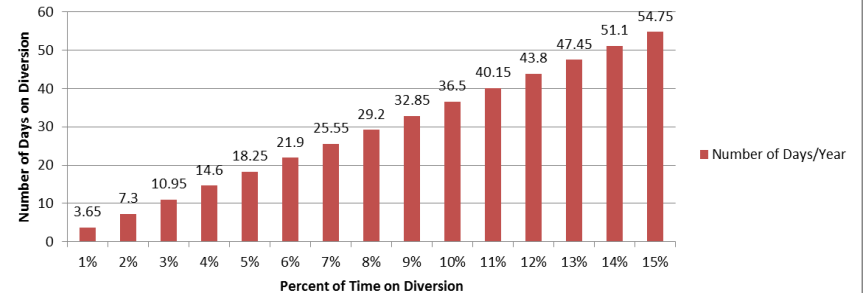
**South Area Includes:**

- Mission Hospital – Mission Viejo
- Mission Hospital – Laguna Beach
- Saddleback Memorial Medical Center
- Laguna Hills
- Saddleback Memorial Medical Center- San Clemente
- Kaiser Hospital – Irvine
- Hoag Hospital - Irvine

Number of Days/Month on Diversion



Number of Days/Year on Diversion



The following tables demonstrate the monthly and annual impact of disclosure in the total number of days the ERC would not receive patients.

Note: Number of days/month based on 30 days in a month



# Emergency Receiving Center Diversion- Total Hours

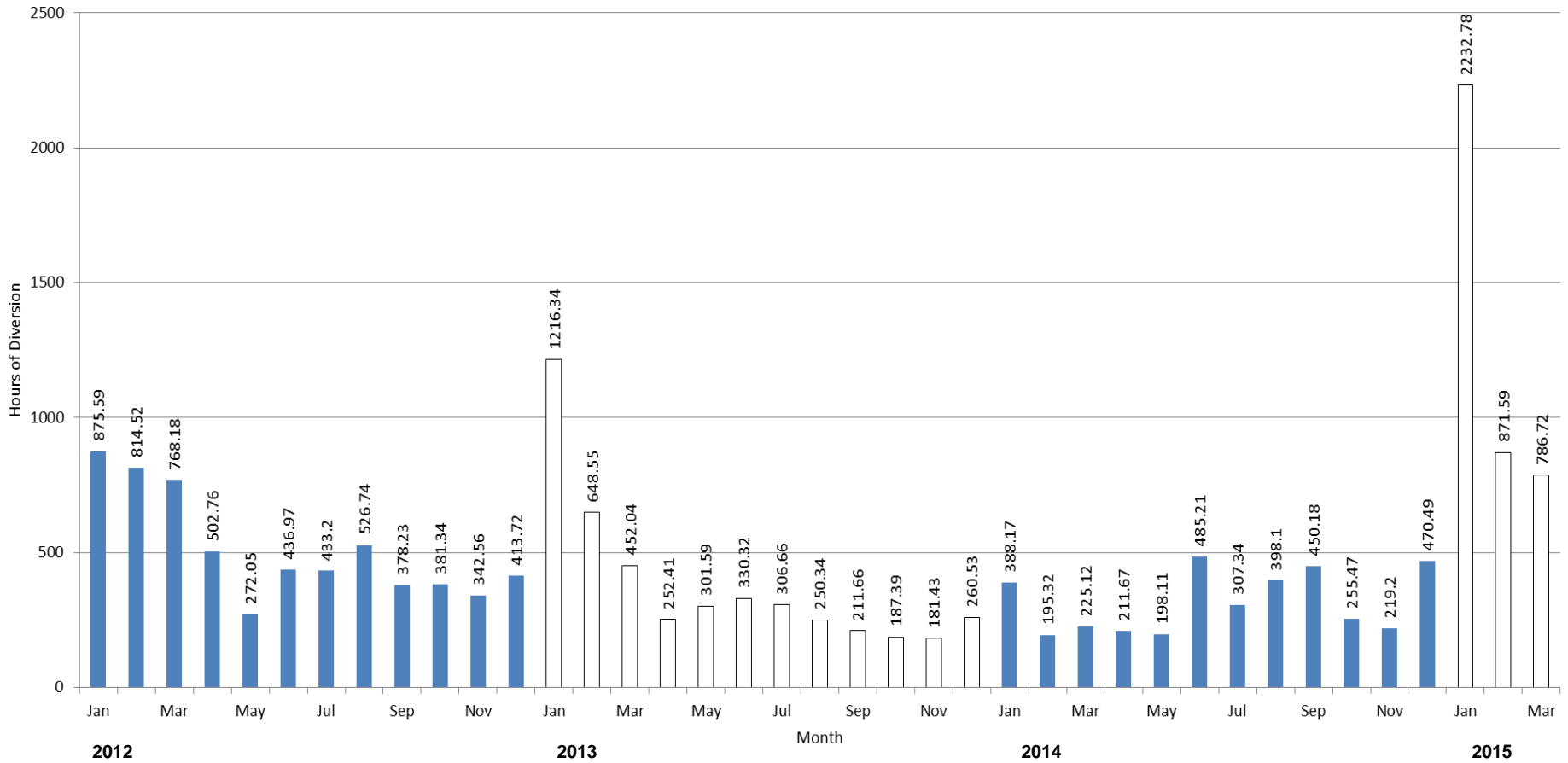
Emergency Receiving Center Diversion Hours 2015												
	Jan	Feb	Mar	Apr	May	Jun	Jul	Aug	Sept	Oct	Nov	Dec
Anaheim Regional Med Ctr	126.12	92.07	101.72	0	0	0	0	0	0	0	0	0
Chapman Med Ctr	7.35	8	15.45	0	0	0	0	0	0	0	0	0
CHOC	12.33	0	0	0	0	0	0	0	0	0	0	0
Coastal Comm Hosp	49.13	6.33	49.77	0	0	0	0	0	0	0	0	0
Fountain Valley	118.55	4.07	1.1	0	0	0	0	0	0	0	0	0
Garden Grove	8.42	12.28	5.18	0	0	0	0	0	0	0	0	0
Hoag Irvine	157.53	35.6	52.28	0	0	0	0	0	0	0	0	0
Hoag Newport	87.98	30.97	10.52	0	0	0	0	0	0	0	0	0
Huntington Beach	78.8	5.07	8.27	0	0	0	0	0	0	0	0	0
Kaiser Irvine	84.25	9.87	16	0	0	0	0	0	0	0	0	0
Kaiser Anaheim	121.3	59.75	96.63	0	0	0	0	0	0	0	0	0
La Palma	30.53	6	0	0	0	0	0	0	0	0	0	0
Los Alamitos	199.07	79.22	37.3	0	0	0	0	0	0	0	0	0
Mission Hospital	149.92	109.33	38.98	0	0	0	0	0	0	0	0	0
Mission Laguna Beach	32.42	5.92	0	0	0	0	0	0	0	0	0	0
Orange Coast Memorial	155.42	37.32	13.4	0	0	0	0	0	0	0	0	0
Placentia Linda	0	0	0	0	0	0	0	0	0	0	0	0
Saddleback Laguna Hills	222.28	103.45	30.4	0	0	0	0	0	0	0	0	0
Saddleback San Clemente	34.33	10.82	10.9	0	0	0	0	0	0	0	0	0
St Joseph	60.57	31.85	28.72	0	0	0	0	0	0	0	0	0
St Jude	41.98	35.05	21.77	0	0	0	0	0	0	0	0	0
UCI	164.1	59.27	113.03	0	0	0	0	0	0	0	0	0
West Anaheim	20.67	34.45	26.78	0	0	0	0	0	0	0	0	0
West Med Ctr -Anaheim	78.65	36.47	45.9	0	0	0	0	0	0	0	0	0
West Med Ctr - Santa Ana	191.08	58.43	62.62	0	0	0	0	0	0	0	0	0
<b>Total</b>	<b>2232.78</b>	<b>871.59</b>	<b>786.72</b>	<b>0</b>	<b>0</b>	<b>0</b>	<b>0</b>	<b>0</b>	<b>0</b>	<b>0</b>	<b>0</b>	<b>0</b>

\*\* Highlighted in Red=Diversion >6%

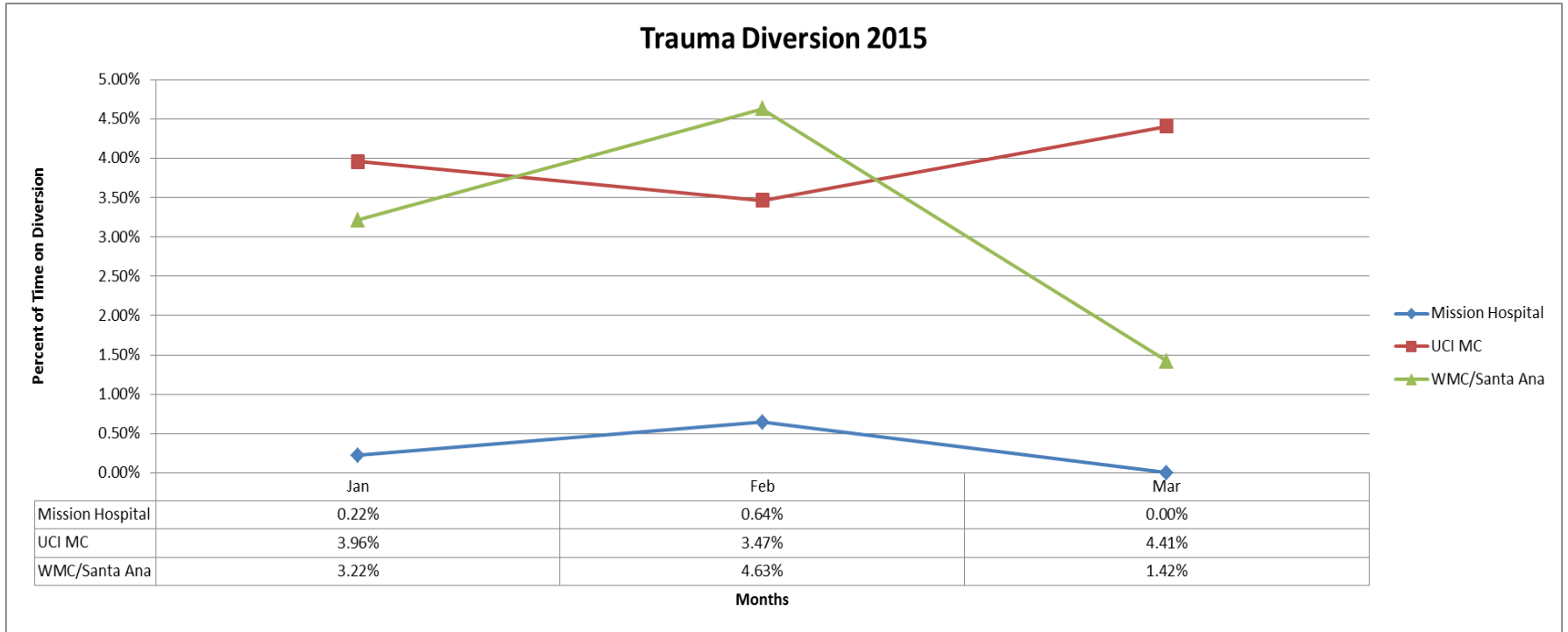


# Emergency Receiving Center Diversion- 2012-2015

Total System Diversion Hours By Month  
January, 2012 through March 2015



# Trauma Receiving Center Diversion- Percent of Time



# Cardiovascular Receiving Center Diversion- Percent of Time

CVRC 2015												
	Jan	Feb	Mar	Apr	May	Jun	Jul	Aug	Sept	Oct	Nov	Dec
Anaheim Regional	0.26%	0.00%	0.00%	0.00%	0.00%	0.00%	0.0%	0.0%	0.0%	0.0%	0.0%	0.0%
Fountain Valley	0.00%	0.00%	0.00%	0.00%	0.00%	0.00%	0.0%	0.0%	0.0%	0.0%	0.0%	0.0%
Hoag Hospital Irvine	0.00%	0.00%	0.54%	0.00%	0.00%	0.00%	0.0%	0.0%	0.0%	0.0%	0.0%	0.0%
Hoag Hospital Newport Beach	0.00%	0.00%	0.00%	0.00%	0.00%	0.00%	0.0%	0.0%	0.0%	0.0%	0.0%	0.0%
Los Alamitos	3.63%	5.18%	0.00%	0.00%	0.00%	0.00%	0.0%	0.0%	0.0%	0.0%	0.0%	0.0%
Orange Coast	0.00%	0.00%	1.04%	0.00%	0.00%	0.00%	0.0%	0.0%	0.0%	0.0%	0.0%	0.0%
Mission Hospital	0.00%	0.00%	0.00%	0.00%	0.00%	0.00%	0.0%	0.0%	0.0%	0.0%	0.0%	0.0%
Saddleback Lagunal Hills	0.00%	0.00%	0.00%	0.00%	0.00%	0.00%	0.0%	0.0%	0.0%	0.0%	0.0%	0.0%
St Joseph	0.00%	0.00%	0.00%	0.00%	0.00%	0.00%	0.0%	0.0%	0.0%	0.0%	0.0%	0.0%
St. Jude	0.00%	0.00%	0.00%	0.00%	0.00%	0.00%	0.0%	0.0%	0.0%	0.0%	0.0%	0.0%
UCI	0.00%	0.00%	0.30%	0.00%	0.00%	0.00%	0.0%	0.0%	0.0%	0.0%	0.0%	0.0%
WAMC	0.56%	6.48%	4.31%	0.00%	0.00%	0.00%	0.0%	0.0%	0.0%	0.0%	0.0%	0.0%
WMCA	14.21%	1.00%	1.22%	0.00%	0.00%	0.00%	0.0%	0.0%	0.0%	0.0%	0.0%	0.0%
WMCSA	26.65%	10.62%	4.42%	0.00%	0.00%	0.00%	0.0%	0.0%	0.0%	0.0%	0.0%	0.0%

Highlighted in Red =Diversion Any Amount





# Internal Disruption Diversion- Percent of Time

Internal Disruption 2015												
	Jan	Feb	Mar	Apr	May	Jun	Jul	Aug	Sept	Oct	Nov	Dec
Anaheim Regional Med Ctr	0.00%	0.00%	0.00%	0.00%	0.00%	0.00%	0.00%	0.00%	0.00%	0.00%	0.00%	0.00%
Chapman Med Ctr	0.00%	0.55%	0.00%	0.00%	0.00%	0.00%	0.00%	0.00%	0.00%	0.00%	0.00%	0.00%
CHOC	0.00%	0.00%	0.00%	0.00%	0.00%	0.00%	0.00%	0.00%	0.00%	0.00%	0.00%	0.00%
Coastal Comm Hosp	0.00%	1.38%	0.00%	0.00%	0.00%	0.00%	0.00%	0.00%	0.00%	0.00%	0.00%	0.00%
Fountain Valley	0.00%	0.00%	0.00%	0.00%	0.00%	0.00%	0.00%	0.00%	0.00%	0.00%	0.00%	0.00%
Garden Grove	0.00%	0.00%	0.00%	0.00%	0.00%	0.00%	0.00%	0.00%	0.00%	0.00%	0.00%	0.00%
Hoag Irvine	0.55%	0.00%	0.57%	0.00%	0.00%	0.00%	0.00%	0.00%	0.00%	0.00%	0.00%	0.00%
Hoag Newport	0.00%	0.00%	0.09%	0.00%	0.00%	0.00%	0.00%	0.00%	0.00%	0.00%	0.00%	0.00%
Huntington Beach	0.33%	0.95%	0.00%	0.00%	0.00%	0.00%	0.00%	0.00%	0.00%	0.00%	0.00%	0.00%
Kaiser Irvine	0.00%	0.00%	0.00%	0.00%	0.00%	0.00%	0.00%	0.00%	0.00%	0.00%	0.00%	0.00%
Kaiser Anaheim	0.00%	0.00%	0.00%	0.00%	0.00%	0.00%	0.00%	0.00%	0.00%	0.00%	0.00%	0.00%
La Palma	0.00%	0.01%	0.00%	0.00%	0.00%	0.00%	0.00%	0.00%	0.00%	0.00%	0.00%	0.00%
Los Alamitos	0.00%	0.00%	0.00%	0.00%	0.00%	0.00%	0.00%	0.00%	0.00%	0.00%	0.00%	0.00%
Mission Hospital	0.00%	0.11%	0.00%	0.00%	0.00%	0.00%	0.00%	0.00%	0.00%	0.00%	0.00%	0.00%
Mission Laguna Beach	0.00%	2.78%	0.00%	0.00%	0.00%	0.00%	0.00%	0.00%	0.00%	0.00%	0.00%	0.00%
Orange Coast Memorial	0.00%	0.11%	1.08%	0.00%	0.00%	0.00%	0.00%	0.00%	0.00%	0.00%	0.00%	0.00%
Placentia Linda	0.00%	0.00%	0.00%	0.00%	0.00%	0.00%	0.00%	0.00%	0.00%	0.00%	0.00%	0.00%
Saddleback Laguna Hills	0.00%	0.00%	0.00%	0.00%	0.00%	0.00%	0.00%	0.00%	0.00%	0.00%	0.00%	0.00%
Saddleback San Clemente	0.00%	0.00%	0.00%	0.00%	0.00%	0.00%	0.00%	0.00%	0.00%	0.00%	0.00%	0.00%
St Joseph	0.00%	0.00%	0.00%	0.00%	0.00%	0.00%	0.00%	0.00%	0.00%	0.00%	0.00%	0.00%
St Jude	0.00%	0.00%	0.00%	0.00%	0.00%	0.00%	0.00%	0.00%	0.00%	0.00%	0.00%	0.00%
UCI	0.00%	0.00%	0.32%	0.00%	0.00%	0.00%	0.00%	0.00%	0.00%	0.00%	0.00%	0.00%
West Anaheim	0.00%	0.00%	0.00%	0.00%	0.00%	0.00%	0.00%	0.00%	0.00%	0.00%	0.00%	0.00%
West Med Ctr -Anaheim	0.00%	0.00%	0.00%	0.00%	0.00%	0.00%	0.00%	0.00%	0.00%	0.00%	0.00%	0.00%
West Med Ctr - Santa Ana	0.00%	0.12%	0.28%	0.00%	0.00%	0.00%	0.00%	0.00%	0.00%	0.00%	0.00%	0.00%

Highlighted in Red =Diversion Any Amount



# CT Diversion Report- Percent of Time

CT Diversion 2015												
	Jan	Feb	Mar	Apr	May	Jun	Jul	Aug	Sept	Oct	Nov	Dec
Anaheim Regional Med Ctr	2.38%	1.64%	2.39%	0.00%	0.00%	0.00%	0.00%	0.00%	0.00%	0.00%	0.00%	0.00%
Chapman Med Ctr	0.00%	0.00%	0.00%	0.00%	0.00%	0.00%	0.00%	0.00%	0.00%	0.00%	0.00%	0.00%
CHOC	0.00%	0.00%	0.00%	0.00%	0.00%	0.00%	0.00%	0.00%	0.00%	0.00%	0.00%	0.00%
Coastal Comm Hosp	1.13%	0.00%	0.69%	0.00%	0.00%	0.00%	0.00%	0.00%	0.00%	0.00%	0.00%	0.00%
Fountain Valley	0.00%	0.04%	0.00%	0.00%	0.00%	0.00%	0.00%	0.00%	0.00%	0.00%	0.00%	0.00%
Garden Grove	0.00%	0.59%	0.31%	0.00%	0.00%	0.00%	0.00%	0.00%	0.00%	0.00%	0.00%	0.00%
Hoag Irvine	0.70%	1.34%	0.54%	0.00%	0.00%	0.00%	0.00%	0.00%	0.00%	0.00%	0.00%	0.00%
Hoag Newport	0.00%	0.00%	0.04%	0.00%	0.00%	0.00%	0.00%	0.00%	0.00%	0.00%	0.00%	0.00%
Huntington Beach	2.78%	0.35%	0.40%	0.00%	0.00%	0.00%	0.00%	0.00%	0.00%	0.00%	0.00%	0.00%
Kaiser Irvine	0.00%	0.00%	0.00%	0.00%	0.00%	0.00%	0.00%	0.00%	0.00%	0.00%	0.00%	0.00%
Kaiser Anaheim	0.00%	0.00%	0.00%	0.00%	0.00%	0.00%	0.00%	0.00%	0.00%	0.00%	0.00%	0.00%
La Palma	0.00%	0.00%	0.00%	0.00%	0.00%	0.00%	0.00%	0.00%	0.00%	0.00%	0.00%	0.00%
Los Alamitos	0.00%	0.38%	0.00%	0.00%	0.00%	0.00%	0.00%	0.00%	0.00%	0.00%	0.00%	0.00%
Mission Hospital	0.00%	0.00%	0.00%	0.00%	0.00%	0.00%	0.00%	0.00%	0.00%	0.00%	0.00%	0.00%
Mission Laguna Beach	0.43%	0.70%	0.00%	0.00%	0.00%	0.00%	0.00%	0.00%	0.00%	0.00%	0.00%	0.00%
Orange Coast Memorial	0.00%	0.00%	0.00%	0.00%	0.00%	0.00%	0.00%	0.00%	0.00%	0.00%	0.00%	0.00%
Placentia Linda	0.00%	0.00%	0.00%	0.00%	0.00%	0.00%	0.00%	0.00%	0.00%	0.00%	0.00%	0.00%
Saddleback Laguna Hills	0.00%	0.00%	0.00%	0.00%	0.00%	0.00%	0.00%	0.00%	0.00%	0.00%	0.00%	0.00%
Saddleback San Clemente	0.00%	0.00%	0.00%	0.00%	0.00%	0.00%	0.00%	0.00%	0.00%	0.00%	0.00%	0.00%
St Joseph	0.01%	0.00%	0.00%	0.00%	0.00%	0.00%	0.00%	0.00%	0.00%	0.00%	0.00%	0.00%
St Jude	0.00%	0.00%	0.00%	0.00%	0.00%	0.00%	0.00%	0.00%	0.00%	0.00%	0.00%	0.00%
UCI	0.00%	0.00%	0.00%	0.00%	0.00%	0.00%	0.00%	0.00%	0.00%	0.00%	0.00%	0.00%
West Anaheim	0.00%	0.00%	0.00%	0.00%	0.00%	0.00%	0.00%	0.00%	0.00%	0.00%	0.00%	0.00%
West Med Ctr -Anaheim	0.31%	0.00%	0.10%	0.00%	0.00%	0.00%	0.00%	0.00%	0.00%	0.00%	0.00%	0.00%
West Med Ctr - Santa Ana	0.00%	0.08%	0.47%	0.00%	0.00%	0.00%	0.00%	0.00%	0.00%	0.00%	0.00%	0.00%

Highlighted in Red =Diversion Any Amount

