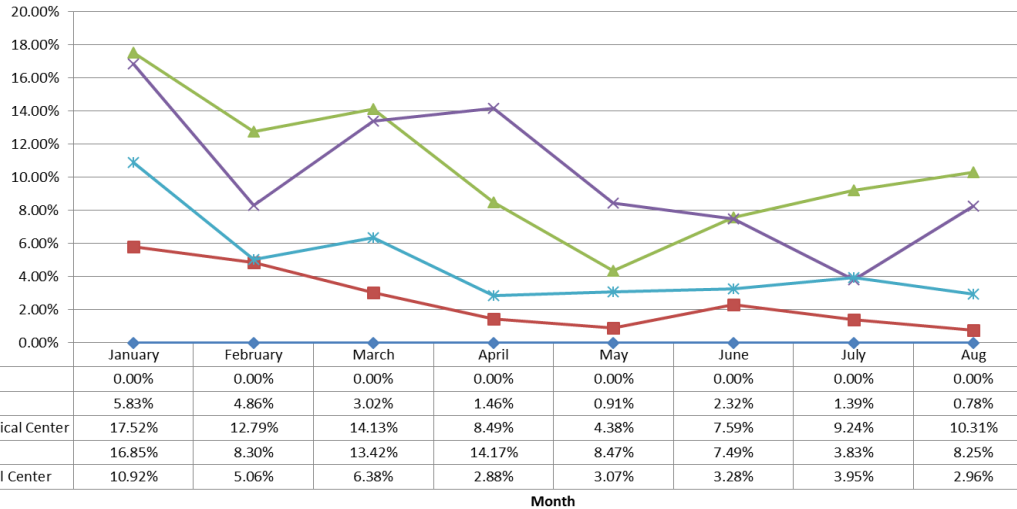




**Orange County
Emergency Medical Services
Diversion Report
January 1 to August 31, 2015**

Emergency Receiving Center Diversion- Percent of Time

North Area- 2015 ERC Diversion



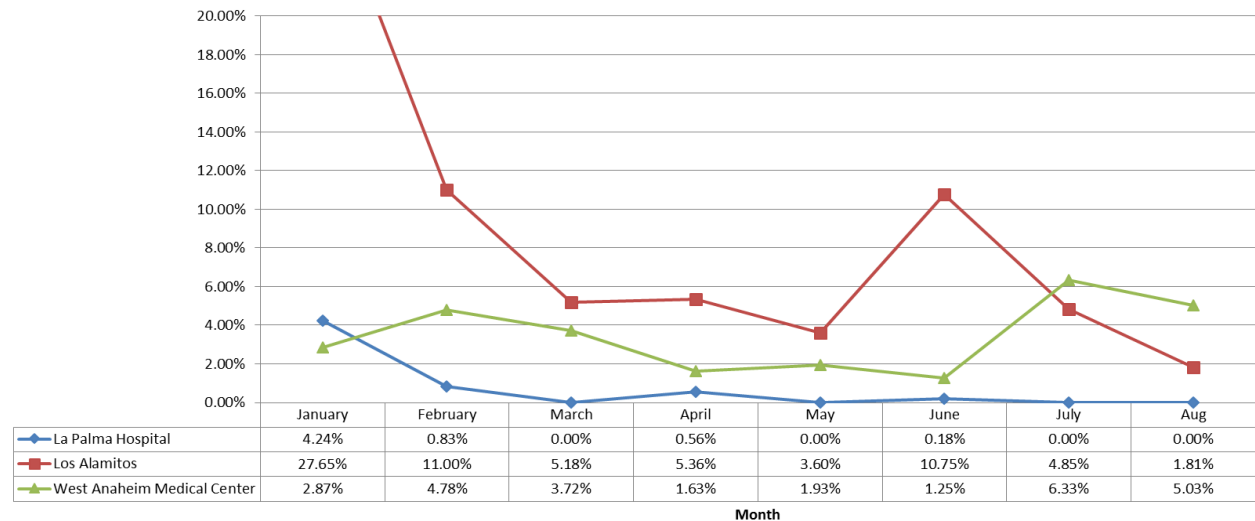
North Area Includes:

- Placentia Linda Hospital
- St. Jude Medical Center
- Anaheim Regional Medical Center
- Kaiser Anaheim
- Anaheim Global Medical Center

West Area Includes:

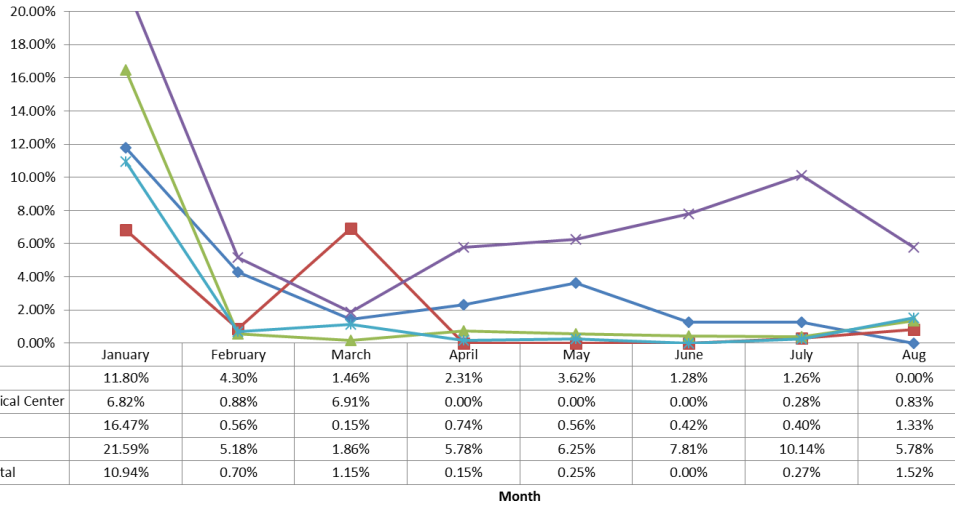
- La Palma Hospital
- Los Alamitos Medical Center
- West Anaheim Medical Center

West Area - 2015 ERC Diversion



Emergency Receiving Center Diversion- Percent of Time

Coastal Area- 2015 ERC Diversion



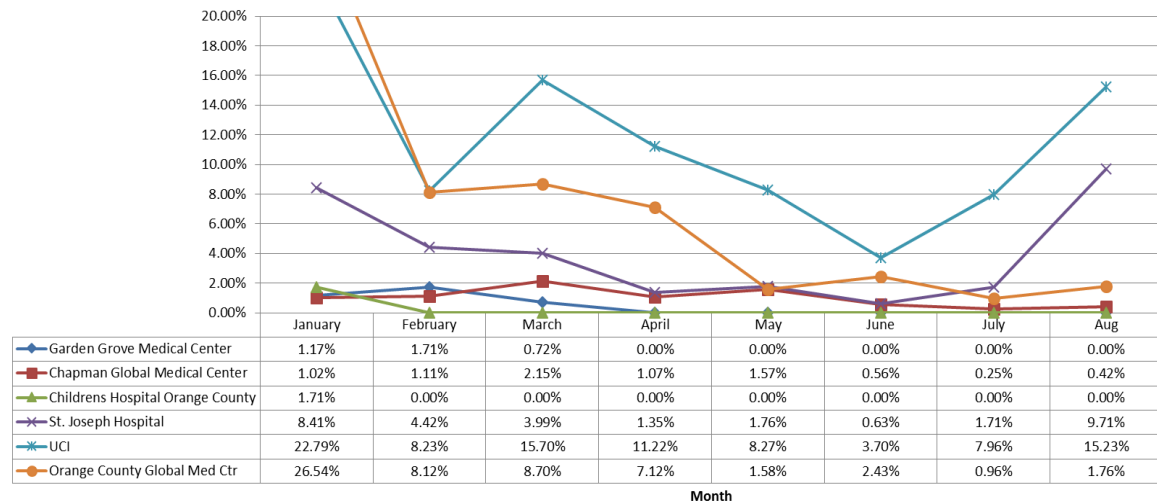
Coastal Area Includes:

- Hoag Hospital Newport Beach
- South Coastal Global Medical Center
- Fountain Valley Hospital
- Orange Coast Memorial Medical Center
- Huntington Beach Hospital

Central Area Includes:

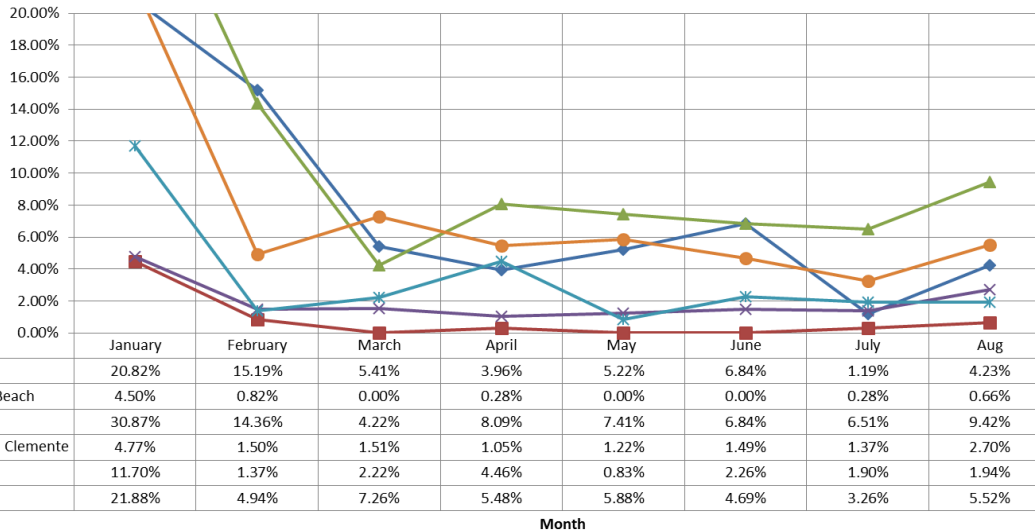
- Garden Grove Medical Center
- Chapman Global Medical Center
- Children's Hospital Orange County
- St. Joseph Hospital
- UCI
- Orange County Global Medical Center

Central Area- 2015 ERC Diversion



Emergency Receiving Center Diversion- Percent of Time

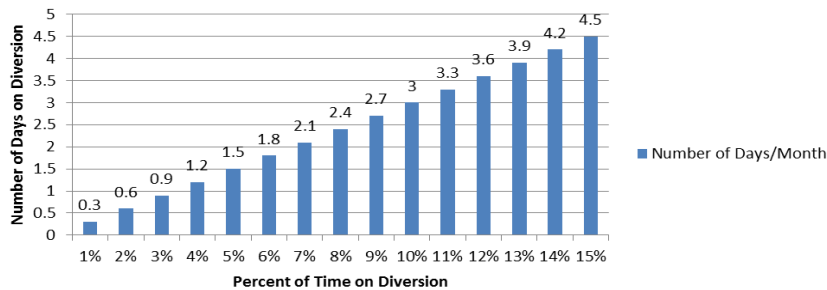
South Area- 2015 ERC Diversion



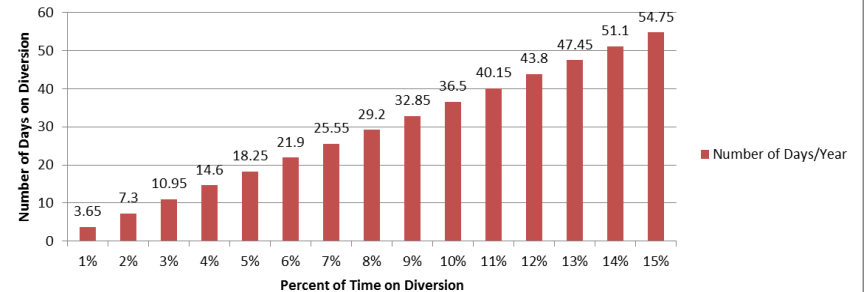
South Area Includes:

- Mission Hospital – Mission Viejo
- Mission Hospital – Laguna Beach
- Saddleback Memorial Medical Center
- Laguna Hills
- Saddleback Memorial Medical Center- San Clemente
- Kaiser Hospital – Irvine
- Hoag Hospital - Irvine

Number of Days/Month on Diversion



Number of Days/Year on Diversion



The following tables demonstrate the monthly and annual impact of disclosure in the total number of days the ERC would not receive patients.

Note: Number of days/month based on 30 days in a month



Emergency Receiving Center Diversion- Total Hours

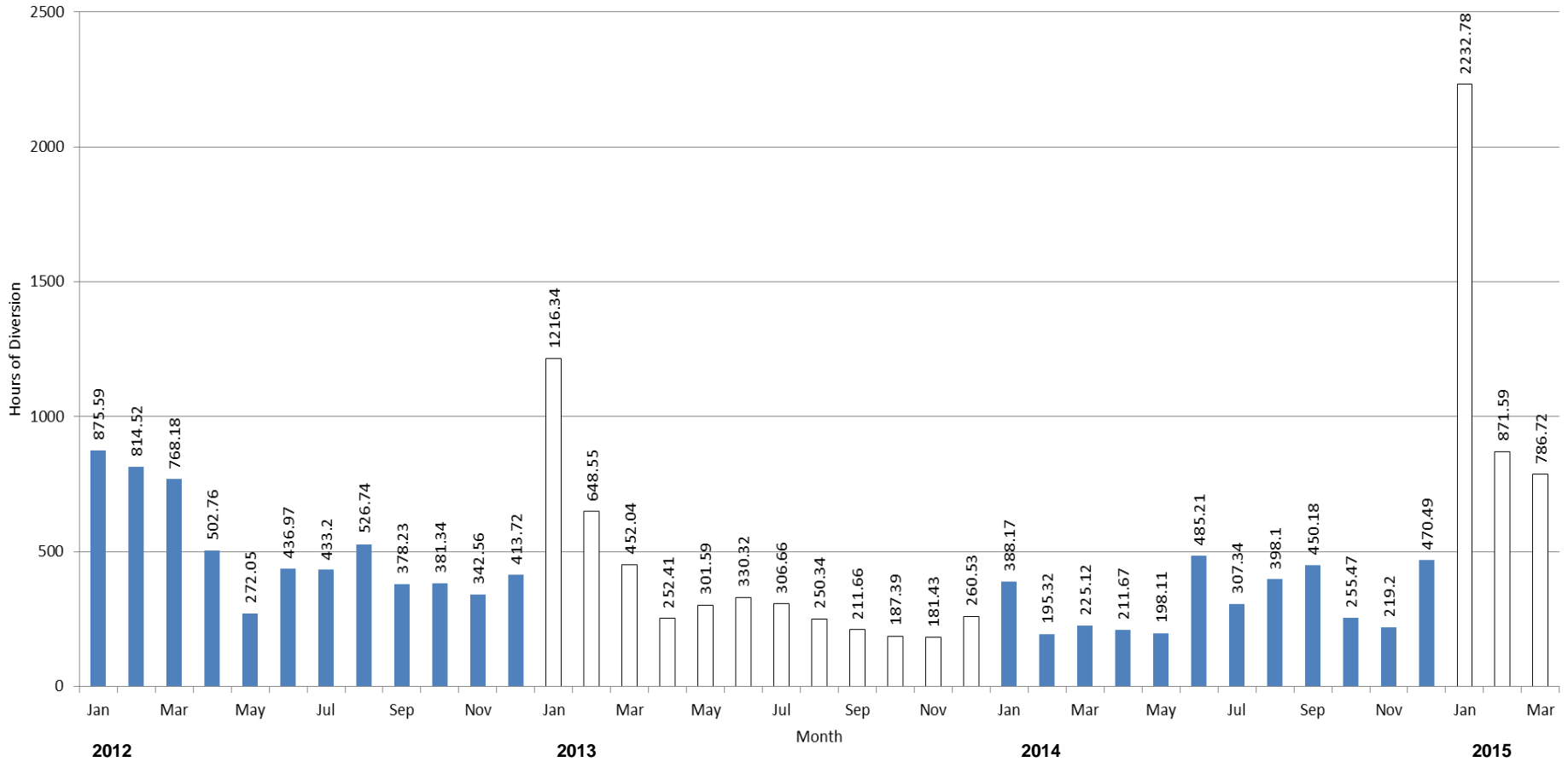
| Emergency Receiving Center Diversion Hours 2015 | | | | | | | | | | | | |
|---|----------------|---------------|---------------|---------------|---------------|---------------|--------------|--------------|----------|----------|----------|----------|
| | Jan | Feb | Mar | Apr | May | Jun | Jul | Aug | Sept | Oct | Nov | Dec |
| Anaheim Regional Med Ctr | 126.12 | 92.07 | 101.72 | 61.1 | 31.53 | 54.63 | 66.55 | 74.27 | 0 | 0 | 0 | 0 |
| Chapman Global Med Ctr | 7.35 | 8 | 15.45 | 7.68 | 11.3 | 4 | 1.77 | 3 | 0 | 0 | 0 | 0 |
| CHOC | 12.33 | 0 | 0 | 0 | 0 | 0 | 0 | 0 | 0 | 0 | 0 | 0 |
| South Coast Global Medical C | 49.13 | 6.33 | 49.77 | 0 | 0 | 0 | 2 | 0.83 | 0 | 0 | 0 | 0 |
| Fountain Valley | 118.55 | 4.07 | 1.1 | 5.33 | 4 | 3.05 | 2.9 | 1.33 | 0 | 0 | 0 | 0 |
| Garden Grove | 8.42 | 12.28 | 5.18 | 0 | 0 | 0 | 0 | 0 | 0 | 0 | 0 | 0 |
| Hoag Irvine | 157.53 | 35.6 | 52.28 | 39.45 | 42.32 | 33.78 | 23.47 | 39.75 | 0 | 0 | 0 | 0 |
| Hoag Newport | 87.98 | 30.97 | 10.52 | 16.65 | 26.07 | 9.23 | 9.05 | 0 | 0 | 0 | 0 | 0 |
| Huntington Beach | 78.8 | 5.07 | 8.27 | 1.05 | 1.8 | 0 | 1.93 | 1.52 | 0 | 0 | 0 | 0 |
| Kaiser Irvine | 84.25 | 9.87 | 16 | 32.12 | 6 | 16.3 | 13.67 | 14 | 0 | 0 | 0 | 0 |
| Kaiser Anaheim | 121.3 | 59.75 | 96.63 | 102.02 | 60.97 | 53.95 | 27.57 | 59.42 | 0 | 0 | 0 | 0 |
| La Palma | 30.53 | 6 | 0 | 4 | 0 | 1.28 | 0 | 0 | 0 | 0 | 0 | 0 |
| Los Alamitos | 199.07 | 79.22 | 37.3 | 38.6 | 25.95 | 77.4 | 34.92 | 13.05 | 0 | 0 | 0 | 0 |
| Mission Hospital | 149.92 | 109.33 | 38.98 | 28.52 | 37.57 | 11.43 | 8.55 | 30.43 | 0 | 0 | 0 | 0 |
| Mission Laguna Beach | 32.42 | 5.92 | 0 | 2 | 0 | 0 | 2 | 4.77 | 0 | 0 | 0 | 0 |
| Orange Coast Memorial | 155.42 | 37.32 | 13.4 | 41.6 | 45.03 | 56.27 | 73.03 | 41.6 | 0 | 0 | 0 | 0 |
| Placentia Linda | 0 | 0 | 0 | 0 | 0 | 0 | 0 | 0 | 0 | 0 | 0 | 0 |
| Saddleback Laguna Hills | 222.28 | 103.45 | 30.4 | 58.25 | 53.37 | 49.28 | 46.9 | 67.83 | 0 | 0 | 0 | 0 |
| Saddleback San Clemente | 34.33 | 10.82 | 10.9 | 7.55 | 8.82 | 1.49 | 9.88 | 19.43 | 0 | 0 | 0 | 0 |
| St Joseph | 60.57 | 31.85 | 28.72 | 9.75 | 12.7 | 4.53 | 12.33 | 69.93 | 0 | 0 | 0 | 0 |
| St Jude | 41.98 | 35.05 | 21.77 | 10.55 | 6.55 | 16.73 | 10 | 5.6 | 0 | 0 | 0 | 0 |
| UCI | 164.1 | 59.27 | 113.03 | 80.82 | 59.52 | 26.65 | 57.28 | 109.63 | 0 | 0 | 0 | 0 |
| West Anaheim | 20.67 | 34.45 | 26.78 | 11.72 | 13.88 | 8.98 | 45.55 | 36.2 | 0 | 0 | 0 | 0 |
| West Med Ctr -Anaheim | 78.65 | 36.47 | 45.9 | 20.75 | 22.12 | 23.58 | 28.45 | 21.33 | 0 | 0 | 0 | 0 |
| Orange County Global MC | 191.08 | 58.43 | 62.62 | 0 | 11.38 | 17.52 | 6.9 | 12.68 | 0 | 0 | 0 | 0 |
| Total | 2232.78 | 871.59 | 786.72 | 579.51 | 480.88 | 470.08 | 484.7 | 626.6 | 0 | 0 | 0 | 0 |

** Highlighted in Red=Diversion >6%



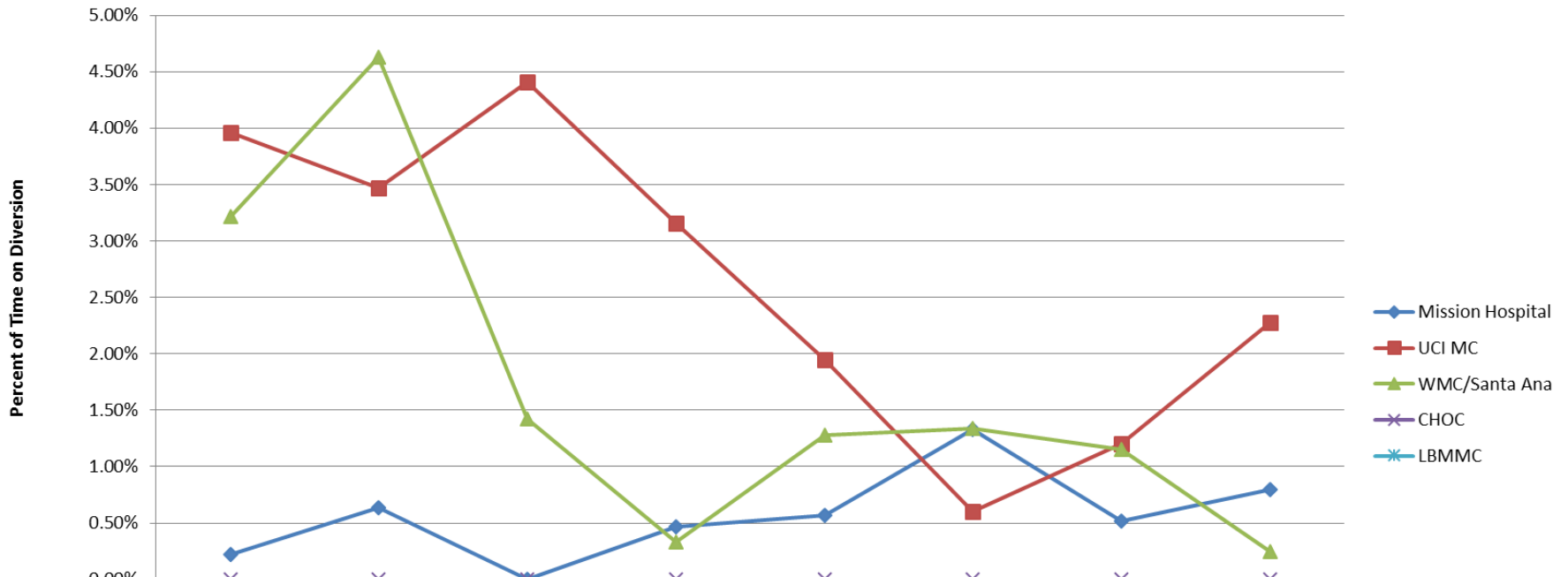
Emergency Receiving Center Diversion- 2012-2015

Total System Diversion Hours By Month
January, 2012 through March 2015



Trauma Receiving Center Diversion- Percent of Time

Trauma Diversion 2015



| | Jan | Feb | Mar | Apr | May | Jun | Jul | Aug |
|------------------|-------|-------|-------|-------|-------|-------|-------|-------|
| Mission Hospital | 0.22% | 0.64% | 0.00% | 0.47% | 0.57% | 1.33% | 0.52% | 0.80% |
| UCI MC | 3.96% | 3.47% | 4.41% | 3.16% | 1.95% | 0.60% | 1.20% | 2.28% |
| WMC/Santa Ana | 3.22% | 4.63% | 1.42% | 0.33% | 1.28% | 1.34% | 1.15% | 0.25% |
| CHOC | 0.00% | 0.00% | 0.00% | 0.00% | 0.00% | 0.00% | 0.00% | 0.00% |
| LBMMC | | | | | | | | |



Cardiovascular Receiving Center Diversion- Percent of Time

| CVRC 2015 | | | | | | | | | | | | |
|-----------------------------|--------|--------|-------|--------|-------|-------|-------|-------|------|------|------|------|
| | Jan | Feb | Mar | Apr | May | Jun | Jul | Aug | Sept | Oct | Nov | Dec |
| Anaheim Regional | 0.26% | 0.00% | 0.00% | 0.00% | 0.00% | 0.00% | 0.0% | 0.0% | 0.0% | 0.0% | 0.0% | 0.0% |
| Fountain Valley | 0.00% | 0.00% | 0.00% | 0.00% | 0.00% | 0.00% | 0.0% | 0.0% | 0.0% | 0.0% | 0.0% | 0.0% |
| Hoag Hospital Irvine | 0.00% | 0.00% | 0.54% | 0.00% | 0.00% | 0.00% | 0.0% | 0.0% | 0.0% | 0.0% | 0.0% | 0.0% |
| Hoag Hospital Newport Beach | 0.00% | 0.00% | 0.00% | 0.00% | 0.00% | 0.00% | 0.0% | 0.0% | 0.0% | 0.0% | 0.0% | 0.0% |
| Los Alamitos | 3.63% | 5.18% | 0.00% | 2.73% | 0.00% | 1.15% | 3.7% | 0.0% | 0.0% | 0.0% | 0.0% | 0.0% |
| Orange Coast | 0.00% | 0.00% | 1.04% | 0.00% | 0.00% | 0.00% | 3.2% | 0.0% | 0.0% | 0.0% | 0.0% | 0.0% |
| Mission Hospital | 0.00% | 0.00% | 0.00% | 0.00% | 0.00% | 0.06% | 0.0% | 0.0% | 0.0% | 0.0% | 0.0% | 0.0% |
| Saddleback Lagunal Hills | 0.00% | 0.00% | 0.00% | 0.00% | 0.00% | 0.00% | 0.0% | 0.0% | 0.0% | 0.0% | 0.0% | 0.0% |
| St Joseph | 0.00% | 0.00% | 0.00% | 0.00% | 0.00% | 0.00% | 0.0% | 0.0% | 0.0% | 0.0% | 0.0% | 0.0% |
| St. Jude | 0.00% | 0.00% | 0.00% | 0.00% | 0.00% | 0.00% | 0.0% | 0.0% | 0.0% | 0.0% | 0.0% | 0.0% |
| UCI | 0.00% | 0.00% | 0.30% | 0.00% | 0.00% | 0.00% | 0.0% | 0.0% | 0.0% | 0.0% | 0.0% | 0.0% |
| WAMC | 0.56% | 6.48% | 4.31% | 3.58% | 0.61% | 1.44% | 4.2% | 1.1% | 0.0% | 0.0% | 0.0% | 0.0% |
| Anaheim Global Medical Ctr | 14.21% | 1.00% | 1.22% | 0.28% | 0.47% | 1.20% | 19.7% | 17.8% | 0.0% | 0.0% | 0.0% | 0.0% |
| Orang County Global Med Ctr | 26.65% | 10.62% | 4.42% | 10.78% | 3.03% | 4.90% | 6.1% | 4.5% | 0.0% | 0.0% | 0.0% | 0.0% |

Highlighted in Red = Diversion Any Amount



Internal Disruption Diversion- Percent of Time

| Internal Disruption 2015 | | | | | | | | | | | | |
|-----------------------------|-------|-------|-------|-------|-------|-------|-------|-------|-------|-------|-------|-------|
| | Jan | Feb | Mar | Apr | May | Jun | Jul | Aug | Sept | Oct | Nov | Dec |
| Anaheim Regional Med Ctr | 0.00% | 0.00% | 0.00% | 0.00% | 0.00% | 0.00% | 0.00% | 0.00% | 0.00% | 0.00% | 0.00% | 0.00% |
| Chapman Global Med Ctr | 0.00% | 0.55% | 0.00% | 0.00% | 0.00% | 0.00% | 0.00% | 0.00% | 0.00% | 0.00% | 0.00% | 0.00% |
| CHOC | 0.00% | 0.00% | 0.00% | 0.00% | 0.00% | 0.00% | 0.00% | 0.00% | 0.00% | 0.00% | 0.00% | 0.00% |
| South Coast Global Med Ctr | 0.00% | 1.38% | 0.00% | 0.00% | 0.00% | 0.00% | 0.00% | 1.62% | 0.00% | 0.00% | 0.00% | 0.00% |
| Fountain Valley | 0.00% | 0.00% | 0.00% | 0.00% | 0.00% | 0.00% | 0.00% | 0.00% | 0.00% | 0.00% | 0.00% | 0.00% |
| Garden Grove | 0.00% | 0.00% | 0.00% | 0.00% | 0.00% | 0.00% | 0.00% | 0.00% | 0.00% | 0.00% | 0.00% | 0.00% |
| Hoag Irvine | 0.55% | 0.00% | 0.57% | 0.00% | 0.24% | 0.00% | 0.11% | 0.00% | 0.00% | 0.00% | 0.00% | 0.00% |
| Hoag Newport | 0.00% | 0.00% | 0.09% | 0.00% | 0.00% | 0.00% | 0.01% | 0.00% | 0.00% | 0.00% | 0.00% | 0.00% |
| Huntington Beach | 0.33% | 0.95% | 0.00% | 0.00% | 0.00% | 0.00% | 0.00% | 0.00% | 0.00% | 0.00% | 0.00% | 0.00% |
| Kaiser Irvine | 0.00% | 0.00% | 0.00% | 0.16% | 0.00% | 0.00% | 0.05% | 0.00% | 0.00% | 0.00% | 0.00% | 0.00% |
| Kaiser Anaheim | 0.00% | 0.00% | 0.00% | 0.46% | 0.00% | 0.00% | 0.15% | 0.00% | 0.00% | 0.00% | 0.00% | 0.00% |
| La Palma | 0.00% | 0.01% | 0.00% | 0.00% | 0.00% | 0.00% | 0.00% | 0.00% | 0.00% | 0.00% | 0.00% | 0.00% |
| Los Alamitos | 0.00% | 0.00% | 0.00% | 0.00% | 0.00% | 0.00% | 0.00% | 0.00% | 0.00% | 0.00% | 0.00% | 0.00% |
| Mission Hospital | 0.00% | 0.11% | 0.00% | 0.00% | 0.00% | 0.06% | 0.00% | 0.01% | 0.00% | 0.00% | 0.00% | 0.00% |
| Mission Laguna Beach | 0.00% | 2.78% | 0.00% | 0.81% | 0.00% | 0.00% | 0.00% | 0.00% | 0.00% | 0.00% | 0.00% | 0.00% |
| Orange Coast Memorial | 0.00% | 0.11% | 1.08% | 0.04% | 0.04% | 0.00% | 0.63% | 0.00% | 0.00% | 0.00% | 0.00% | 0.00% |
| Placentia Linda | 0.00% | 0.00% | 0.00% | 0.00% | 0.00% | 0.00% | 0.00% | 0.00% | 0.00% | 0.00% | 0.00% | 0.00% |
| Saddleback Laguna Hills | 0.00% | 0.00% | 0.00% | 0.00% | 0.00% | 0.00% | 0.00% | 0.00% | 0.00% | 0.00% | 0.00% | 0.00% |
| Saddleback San Clemente | 0.00% | 0.00% | 0.00% | 0.37% | 0.00% | 0.00% | 0.00% | 0.00% | 0.00% | 0.00% | 0.00% | 0.00% |
| St Joseph | 0.00% | 0.00% | 0.00% | 0.14% | 0.00% | 0.00% | 0.19% | 0.00% | 0.00% | 0.00% | 0.00% | 0.00% |
| St Jude | 0.00% | 0.00% | 0.00% | 0.00% | 0.12% | 0.00% | 0.00% | 0.00% | 0.00% | 0.00% | 0.00% | 0.00% |
| UCI | 0.00% | 0.00% | 0.32% | 0.00% | 0.00% | 0.00% | 0.00% | 0.00% | 0.00% | 0.00% | 0.00% | 0.00% |
| West Anaheim | 0.00% | 0.00% | 0.00% | 0.00% | 0.00% | 0.00% | 0.00% | 0.00% | 0.00% | 0.00% | 0.00% | 0.00% |
| Anaheim Global Med Ctr | 0.00% | 0.00% | 0.00% | 0.00% | 0.00% | 0.00% | 0.00% | 0.00% | 0.00% | 0.00% | 0.00% | 0.00% |
| Orange County Global Med Ct | 0.00% | 0.12% | 0.28% | 0.07% | 0.00% | 0.00% | 0.00% | 0.00% | 0.00% | 0.00% | 0.00% | 0.00% |

Highlighted in Red = Diversion Any Amount



CT Diversion Report- Percent of Time

| CT Diversion 2015 | | | | | | | | | | | | |
|-----------------------------|-------|-------|-------|-------|-------|-------|-------|-------|-------|-------|-------|-------|
| | Jan | Feb | Mar | Apr | May | Jun | Jul | Aug | Sept | Oct | Nov | Dec |
| Anaheim Regional Med Ctr | 2.38% | 1.64% | 2.39% | 1.21% | 0.84% | 1.60% | 2.49% | 1.40% | 0.00% | 0.00% | 0.00% | 0.00% |
| Chapman Global Med Ctr | 0.00% | 0.00% | 0.00% | 0.17% | 0.00% | 0.00% | 0.00% | 0.00% | 0.00% | 0.00% | 0.00% | 0.00% |
| CHOC | 0.00% | 0.00% | 0.00% | 0.00% | 0.00% | 0.00% | 0.00% | 0.00% | 0.00% | 0.00% | 0.00% | 0.00% |
| South Coast Global Med Ctr | 1.13% | 0.00% | 0.69% | 0.00% | 0.11% | 0.00% | 1.88% | 1.62% | 0.00% | 0.00% | 0.00% | 0.00% |
| Fountain Valley | 0.00% | 0.04% | 0.00% | 0.00% | 0.00% | 0.00% | 0.00% | 0.00% | 0.00% | 0.00% | 0.00% | 0.00% |
| Garden Grove | 0.00% | 0.59% | 0.31% | 2.24% | 0.00% | 0.00% | 0.40% | 0.00% | 0.00% | 0.00% | 0.00% | 0.00% |
| Hoag Irvine | 0.70% | 1.34% | 0.54% | 3.38% | 0.47% | 0.59% | 0.61% | 0.00% | 0.00% | 0.00% | 0.00% | 0.00% |
| Hoag Newport | 0.00% | 0.00% | 0.04% | 0.00% | 0.00% | 0.00% | 0.00% | 0.00% | 0.00% | 0.00% | 0.00% | 0.00% |
| Huntington Beach | 2.78% | 0.35% | 0.40% | 0.22% | 0.34% | 0.19% | 0.00% | 0.00% | 0.00% | 0.00% | 0.00% | 0.00% |
| Kaiser Irvine | 0.00% | 0.00% | 0.00% | 0.00% | 0.00% | 0.00% | 0.00% | 0.00% | 0.00% | 0.00% | 0.00% | 0.00% |
| Kaiser Anaheim | 0.00% | 0.00% | 0.00% | 0.25% | 0.00% | 0.14% | 0.13% | 0.00% | 0.00% | 0.00% | 0.00% | 0.00% |
| La Palma | 0.00% | 0.00% | 0.00% | 0.00% | 0.00% | 0.34% | 0.00% | 0.00% | 0.00% | 0.00% | 0.00% | 0.00% |
| Los Alamitos | 0.00% | 0.38% | 0.00% | 0.00% | 0.00% | 0.12% | 0.00% | 0.00% | 0.00% | 0.00% | 0.00% | 0.00% |
| Mission Hospital | 0.00% | 0.00% | 0.00% | 0.00% | 0.00% | 0.06% | 0.06% | 0.00% | 0.00% | 0.00% | 0.00% | 0.00% |
| Mission Laguna Beach | 0.43% | 0.70% | 0.00% | 0.00% | 0.00% | 0.64% | 0.00% | 0.00% | 0.00% | 0.00% | 0.00% | 0.00% |
| Orange Coast Memorial | 0.00% | 0.00% | 0.00% | 0.00% | 0.09% | 0.00% | 0.00% | 0.00% | 0.00% | 0.00% | 0.00% | 0.00% |
| Placentia Linda | 0.00% | 0.00% | 0.00% | 0.00% | 0.00% | 0.00% | 0.00% | 0.00% | 0.00% | 0.00% | 0.00% | 0.00% |
| Saddleback Laguna Hills | 0.00% | 0.00% | 0.00% | 0.43% | 0.00% | 0.00% | 0.00% | 0.00% | 0.00% | 0.00% | 0.00% | 0.00% |
| Saddleback San Clemente | 0.00% | 0.00% | 0.00% | 0.00% | 0.00% | 0.00% | 0.00% | 0.00% | 0.00% | 0.00% | 0.00% | 0.00% |
| St Joseph | 0.01% | 0.00% | 0.00% | 0.00% | 0.00% | 0.00% | 0.00% | 0.00% | 0.00% | 0.00% | 0.00% | 0.00% |
| St Jude | 0.00% | 0.00% | 0.00% | 0.00% | 0.00% | 0.00% | 0.00% | 0.00% | 0.00% | 0.00% | 0.00% | 0.00% |
| UCI | 0.00% | 0.00% | 0.00% | 0.00% | 0.00% | 0.00% | 0.00% | 0.00% | 0.00% | 0.00% | 0.00% | 0.00% |
| West Anaheim | 0.00% | 0.00% | 0.00% | 0.00% | 0.00% | 0.00% | 0.00% | 0.00% | 0.00% | 0.00% | 0.00% | 0.00% |
| Anaheim Global Med Ctr | 0.31% | 0.00% | 0.10% | 0.00% | 0.00% | 0.00% | 0.13% | 0.12% | 0.00% | 0.00% | 0.00% | 0.00% |
| Orange County Global Med Ct | 0.00% | 0.08% | 0.47% | 0.00% | 0.48% | 0.24% | 0.00% | 0.00% | 0.00% | 0.00% | 0.00% | 0.00% |

Highlighted in Red = Diversion Any Amount

