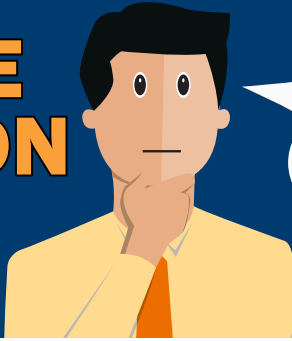


WHOLE PERSON CARE



What is It?

Whole Person Care (WPC) is the coordination of physical, behavioral health, and social services in a patient centered approach with the goals of improved health and well-being through more efficient and effective uses for Medi-Cal beneficiaries struggling with homelessness.

WHOLE PERSON CARE



What is It?

Whole Person Care (WPC) is the coordination of physical, behavioral health, and social services in a patient centered approach with the goals of improved health and well-being through more efficient and effective uses for Medi-Cal beneficiaries struggling with homelessness.

If you are in need of medical or health services, help with housing or community information...

WE CAN HELP YOU!

Together, we can connect you to comprehensive, applicable programs and services to help you achieve well-being.



WE CAN HELP YOU!

Together, we can connect you to comprehensive, applicable programs and services to help you achieve well-being.



FAMILIES TOGETHER OF ORANGE COUNTY

is a Community Health Center that provides medical, dental and optometry services as well as health coverage and resource assistance.

661 W. 1st St. # G ❖ Tustin, CA 92780
(800) 597-7977 ❖ (714) 665-9890



FAMILIES TOGETHER OF ORANGE COUNTY

is a Community Health Center that provides medical, dental and optometry services as well as health coverage and resource assistance.

661 W. 1st St. # G ❖ Tustin, CA 92780
(800) 597-7977 ❖ (714) 665-9890

