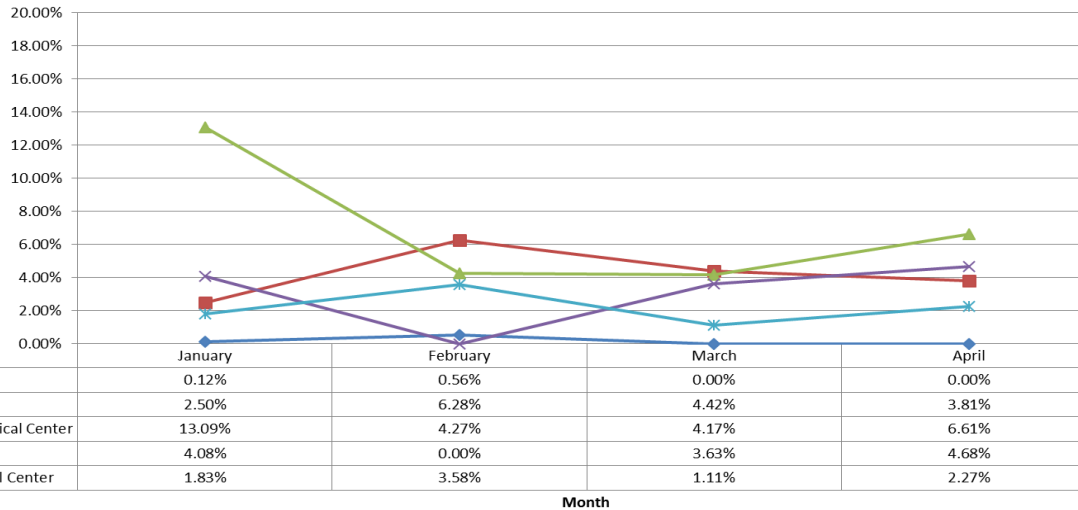




**Orange County  
Emergency Medical Services  
Diversion Report  
January 1 to April 30, 2017**

# Emergency Receiving Center Diversion- Percent of Time

**North Area- 2017 ERC Diversion**



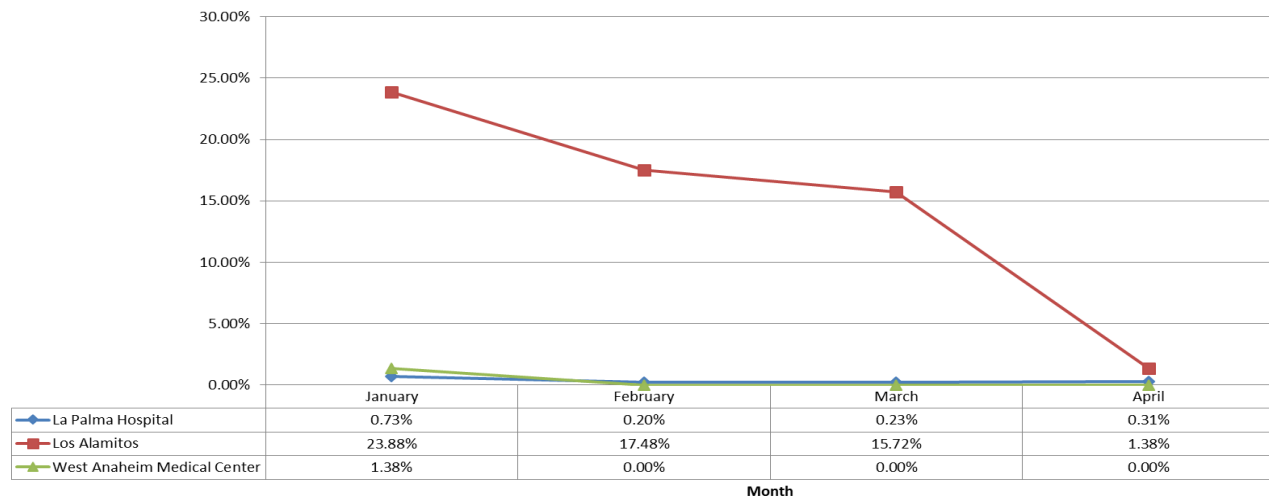
**North Area Includes:**

- Placentia Linda Hospital
- St. Jude Medical Center
- Anaheim Regional Medical Center
- Kaiser Anaheim
- Anaheim Global Medical Center

**West Area Includes:**

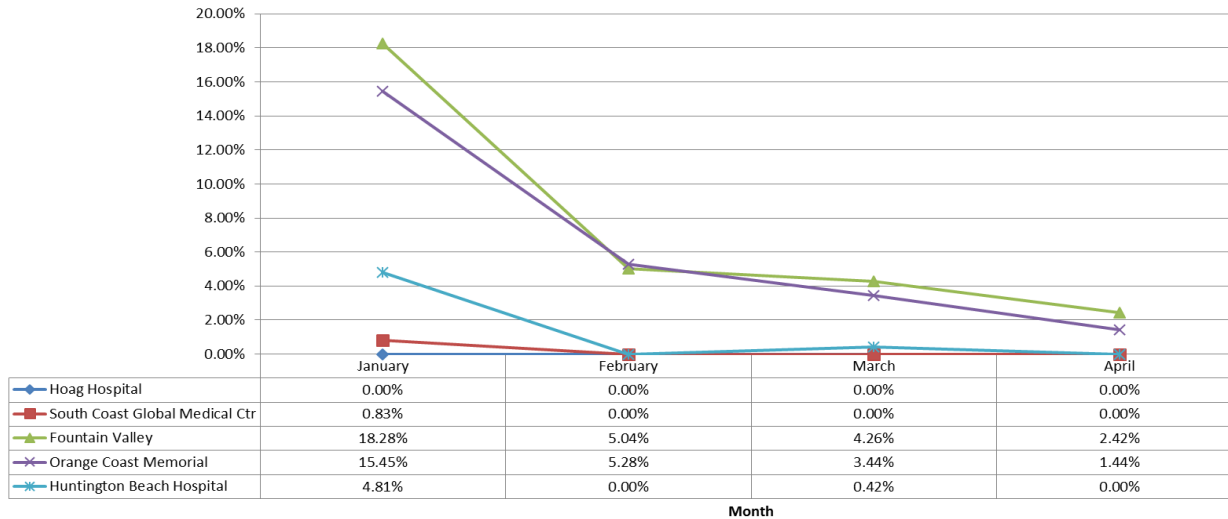
- La Palma Hospital
- Los Alamitos Medical Center
- West Anaheim Medical Center

**West Area - 2017 ERC Diversion**



# Emergency Receiving Center Diversion- Percent of Time

**Coastal Area- 2017 ERC Diversion**



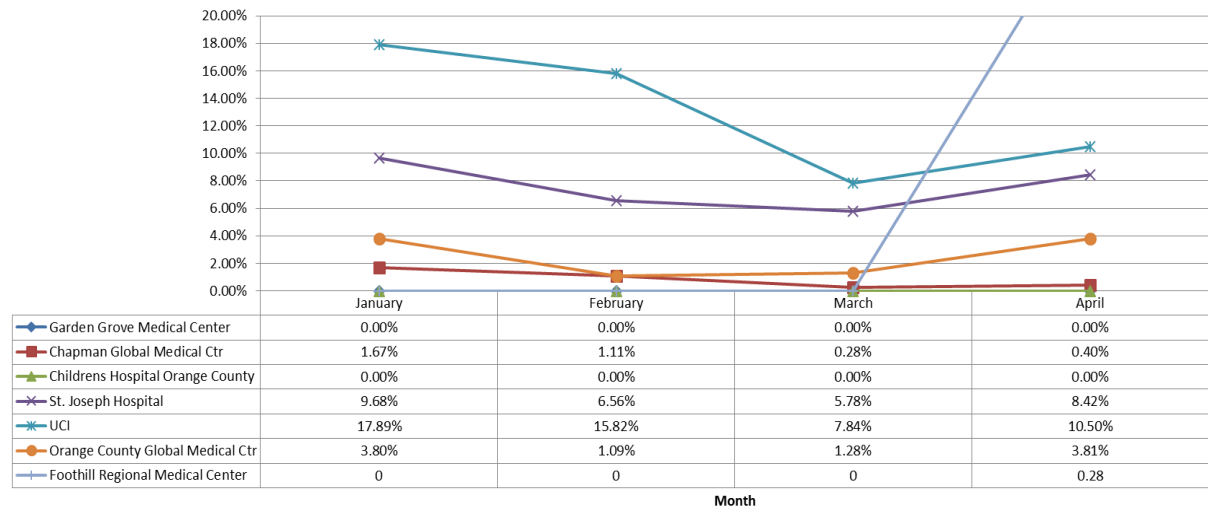
**Coastal Area Includes:**

- Hoag Hospital Newport Beach
- South Coastal Global Medical Center
- Fountain Valley Hospital
- Orange Coast Memorial Medical Center
- Huntington Beach Hospital

**Central Area Includes:**

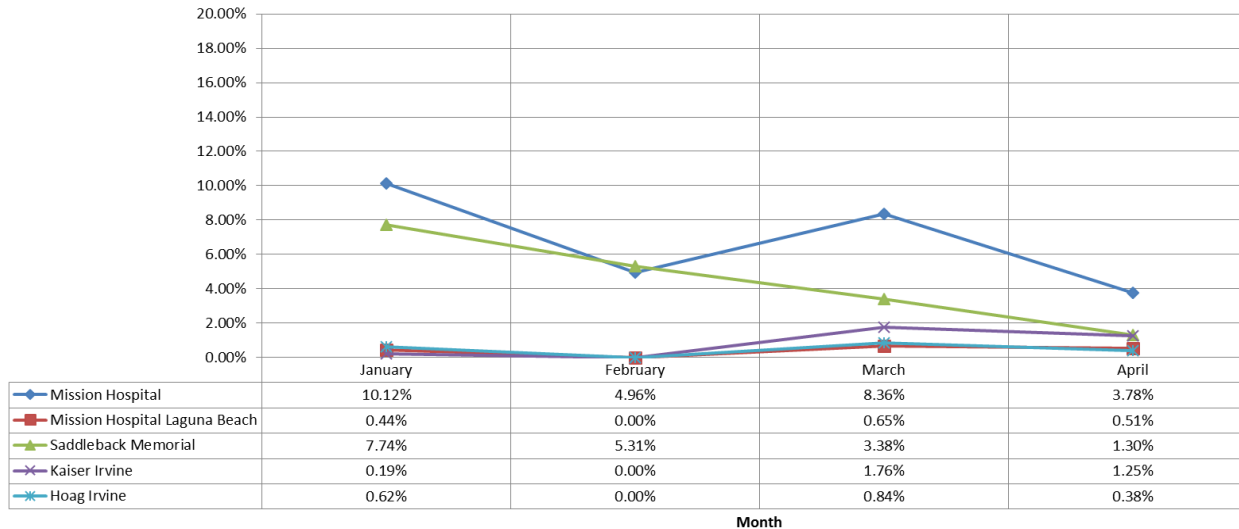
- Garden Grove Medical Center
- Chapman Global Medical Center
- Children's Hospital Orange County
- St. Joseph Hospital
- UCI
- Orange County Global Medical Center
- Foothill Regional Medical Center

**Central Area- 2017 ERC Diversion**



# Emergency Receiving Center Diversion- Percent of Time

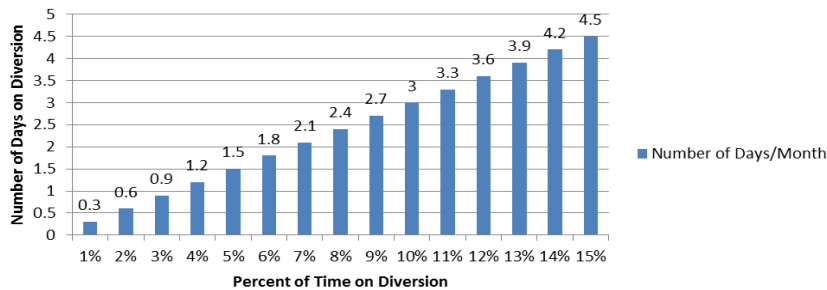
South Area- 2017 ERC Diversion



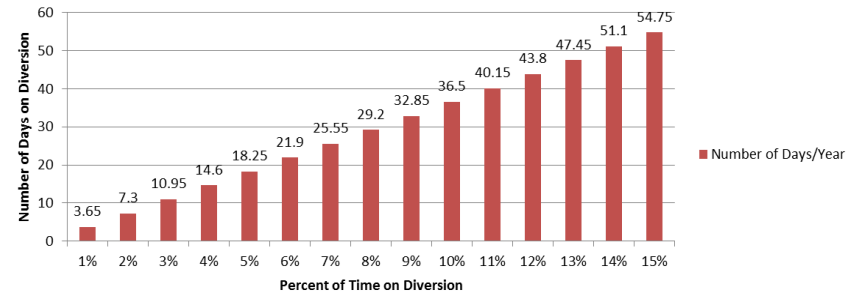
**South Area Includes:**

- Mission Hospital – Mission Viejo
- Mission Hospital – Laguna Beach
- Saddleback Memorial Medical Center
- Laguna Hills
- Kaiser Hospital – Irvine
- Hoag Hospital - Irvine

Number of Days/Month on Diversion



Number of Days/Year on Diversion



The two charts above demonstrate the monthly and annual impact of diversion represented as a total number of days an ERC would not receive patients given the percent of time of diversion.

Note: Number of days/month based on 30 days in a month

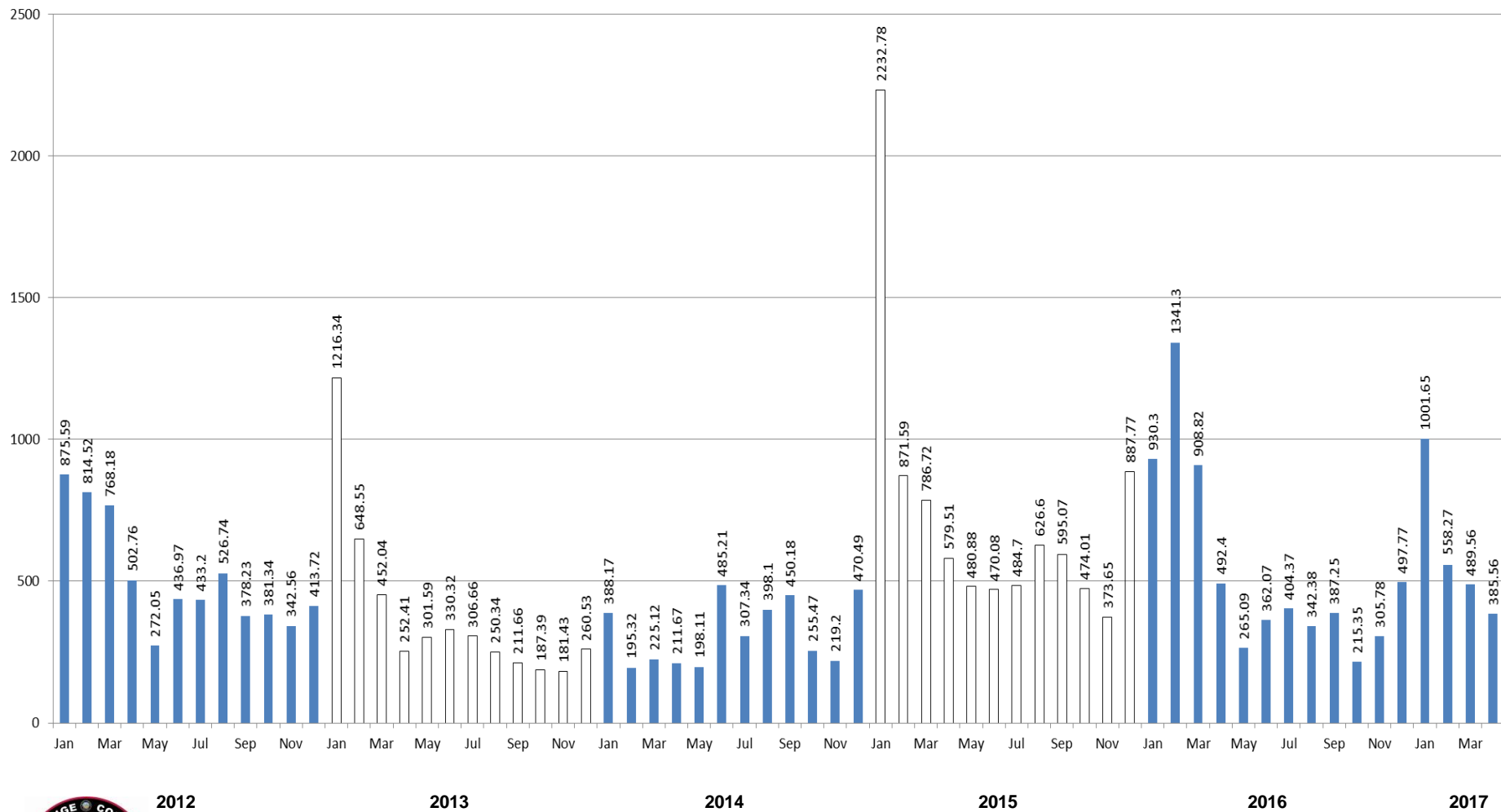
# Emergency Receiving Center Diversion- Total Hours

Emergency Receiving Center Diversion Hours 2017												
	Jan	Feb	Mar	Apr	May	Jun	Jul	Aug	Sept	Oct	Nov	Dec
Anaheim Global Medical Ctr	790	25.78	8	16.37								
Anaheim Regional Med Ctr	94.27	30.73	30	47.58								
Chapman Global Medical Ctr	12	8	2	2.88								
CHOC	0	0	0	0								
Foothill Regional Medical Ctr	0	0	0	2								
Fountain Valley	131.58	36.28	30.65	17.42								
Garden Grove Hospital	0	0	0	0								
Hoag Hospital Irvine	4.47	0	6.05	2.73								
Hoag Newport	0	0	0	0								
Huntington Beach	34.6	0	3.02	0								
Kaiser Anaheim	29.38	0	26.12	33.68								
Kaiser Irvine	1.4	0	12.65	9								
La Palma Intercommunity	5.28	1.43	1.63	2.27								
Los Alamitos	171.93	125.88	113.18	9.92								
Mission Hospital Laguna	3.18	0	4.68	3.67								
Mission Hospital Mission	72.87	35.68	60.2	27.18								
Orange Coast Memorial	111.23	38.05	27.8	10.37								
Orange County Global Med	27.35	7.86	9.23	27.45								
Placentia Linda Hospital	0.85	4	0	0								
Saddleback Memorial	55.73	38.27	24.37	9.33								
South Coast Global	6	0	0	0								
St Joseph	69.7	47.2	41.65	60.63								
St. Jude Medical Ctr	17.95	45.23	31.85	27.45								
UCI	128.78	113.88	56.48	75.63								
West Anaheim Medical Ctr	9.93	0	0	0								
<b>Total</b>	<b>1778.48</b>	<b>558.27</b>	<b>489.56</b>	<b>385.56</b>								



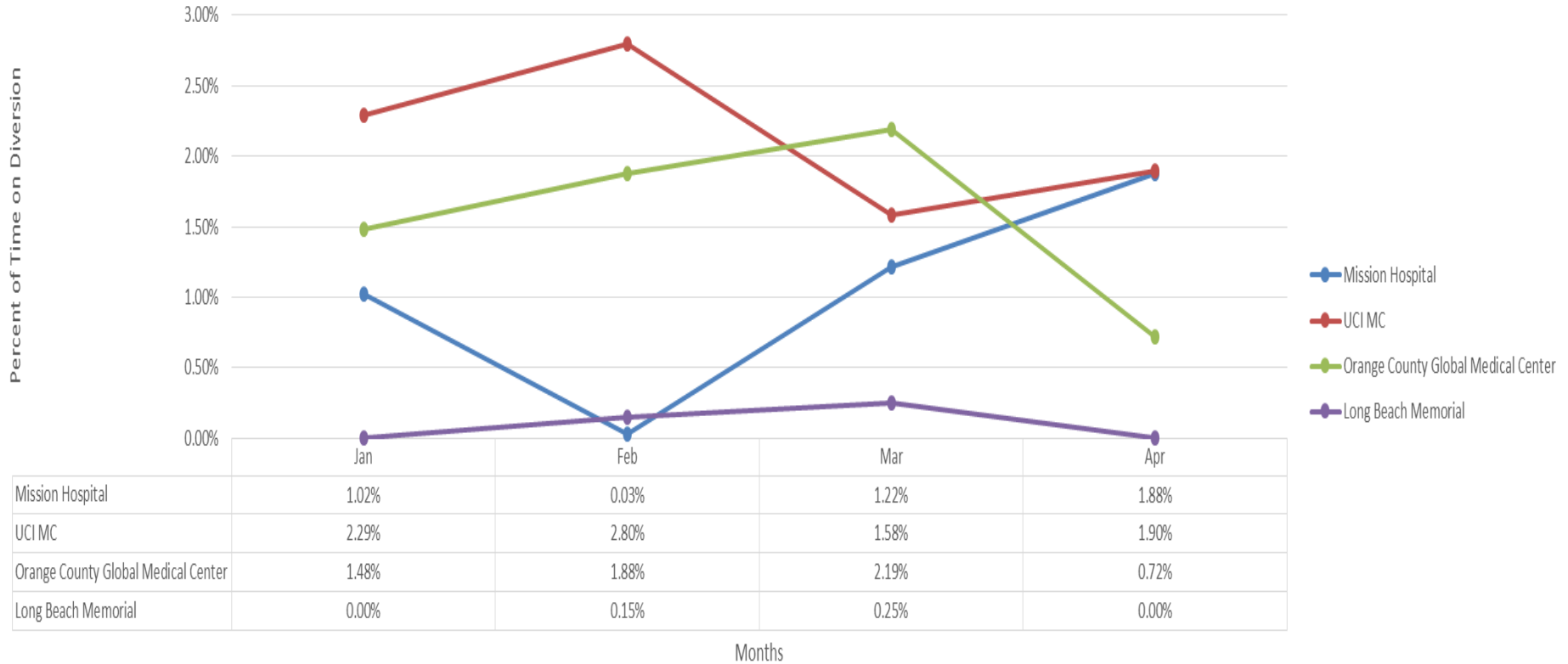
\*\* Highlighted in Red=Diversion >6%

# Emergency Receiving Center Diversion- 2012-2016



# Trauma Receiving Center Diversion- Percent of Time

Trauma Diversion 2017



# Cardiovascular Receiving Center Diversion- Percent of Time

CVRC 2017												
	Jan	Feb	Mar	Apr	May	Jun	Jul	Aug	Sept	Oct	Nov	Dec
Anaheim Global Medical Ctr	0.31%	0.40%	0.75%	8.37%	0.00%	0.00%	0.0%	0.0%	0.0%	0.0%	0.0%	0.0%
Anaheim Regional Medical Ctr	1.41%	0.31%	0.00%	1.86%	0.00%	0.00%	0.0%	0.0%	0.0%	0.0%	0.0%	0.0%
Fountain Valley	0.44%	0.00%	0.00%	0.00%	0.00%	0.00%	0.0%	0.0%	0.0%	0.0%	0.0%	0.0%
Hoag Hospital Irvine	0.00%	0.00%	0.00%	0.44%	0.00%	0.00%	0.0%	0.0%	0.0%	0.0%	0.0%	0.0%
Hoag Hospital Newport	0.00%	0.00%	0.00%	0.00%	0.00%	0.00%	0.0%	0.0%	0.0%	0.0%	0.0%	0.0%
Los Alamitos	0.00%	0.00%	0.00%	0.24%	0.00%	0.00%	0.0%	0.0%	0.0%	0.0%	0.0%	0.0%
Orange Coast Memorial Med	4.16%	4.23%	0.00%	0.00%	0.00%	0.00%	0.0%	0.0%	0.0%	0.0%	0.0%	0.0%
Orange County Global Med	7.27%	3.30%	7.21%	9.68%	0.00%	0.00%	0.0%	0.0%	0.0%	0.0%	0.0%	0.0%
Mission Hospital	0.23%	0.00%	0.00%	0.61%	0.00%	0.00%	0.0%	0.0%	0.0%	0.0%	0.0%	0.0%
Saddleback Memorial	0.00%	0.00%	0.00%	0.00%	0.00%	0.00%	0.0%	0.0%	0.0%	0.0%	0.0%	0.0%
St Joseph	0.00%	0.00%	0.00%	0.00%	0.00%	0.00%	0.0%	0.0%	0.0%	0.0%	0.0%	0.0%
St Jude	0.00%	0.00%	0.00%	0.00%	0.00%	0.00%	0.0%	0.0%	0.0%	0.0%	0.0%	0.0%
UCI	0.25%	0.00%	0.38%	0.00%	0.00%	0.00%	0.0%	0.0%	0.0%	0.0%	0.0%	0.0%
West Anaheim Medical Ctr	0.00%	2.31%	0.86%	0.70%	0.00%	0.00%	0.0%	0.0%	0.0%	0.0%	0.0%	0.0%

Highlighted in Red = Diversion Any Amount





# Internal Disruption Diversion- Percent of Time

Internal Disruption 2017												
	Jan	Feb	Mar	Apr	May	Jun	Jul	Aug	Sept	Oct	Nov	Dec
Anaheim Global Medical Ctr	0.00%	0.00%	0.00%	1.70%	0.00%	0.00%	0.00%	0.00%	0.00%	0.00%	0.00%	0.00%
Anaheim Regional Med Ctr	0.00%	0.00%	0.00%	0.00%	0.00%	0.00%	0.00%	0.00%	0.00%	0.00%	0.00%	0.00%
Chapman Global Medical Ctr	0.00%	0.00%	0.00%	0.00%	0.00%	0.00%	0.00%	0.00%	0.00%	0.00%	0.00%	0.00%
CHOC	0.00%	0.00%	0.00%	0.00%	0.00%	0.00%	0.00%	0.00%	0.00%	0.00%	0.00%	0.00%
Foothill Regional Medical Ctr	0.00%	0.00%	0.00%	0.00%	0.00%	0.00%	0.00%	0.00%	0.00%	0.00%	0.00%	0.00%
Fountain Valley	0.44%	0.00%	0.00%	0.00%	0.00%	0.00%	0.00%	0.00%	0.00%	0.00%	0.00%	0.00%
Garden Grove Hospital	0.00%	0.00%	0.00%	0.00%	0.00%	0.00%	0.00%	0.00%	0.00%	0.00%	0.00%	0.00%
Hoag Hospital Irvine	0.00%	0.00%	0.00%	0.00%	0.00%	0.00%	0.00%	0.00%	0.00%	0.00%	0.00%	0.00%
Hoag Newport	0.00%	0.00%	0.00%	0.00%	0.00%	0.00%	0.00%	0.00%	0.00%	0.00%	0.00%	0.00%
Huntington Beach	0.03%	0.00%	0.00%	0.00%	0.00%	0.00%	0.00%	0.00%	0.00%	0.00%	0.00%	0.00%
Kaiser Anaheim	0.00%	0.00%	0.00%	0.00%	0.00%	0.00%	0.00%	0.00%	0.00%	0.00%	0.00%	0.00%
Kaiser Irvine	0.00%	0.00%	0.22%	0.00%	0.00%	0.00%	0.00%	0.00%	0.00%	0.00%	0.00%	0.00%
La Palma Intercommunity	0.00%	0.00%	0.00%	0.00%	0.00%	0.00%	0.00%	0.00%	0.00%	0.00%	0.00%	0.00%
Los Alamitos	0.00%	0.00%	0.00%	0.00%	0.00%	0.00%	0.00%	0.00%	0.00%	0.00%	0.00%	0.00%
Mission Hospital Laguna	0.04%	0.00%	0.00%	0.00%	0.00%	0.00%	0.00%	0.00%	0.00%	0.00%	0.00%	0.00%
Mission Hospital Mission	0.00%	0.00%	0.00%	0.00%	0.00%	0.00%	0.00%	0.00%	0.00%	0.00%	0.00%	0.00%
Orange Coast Memorial	0.19%	0.00%	0.00%	0.00%	0.00%	0.00%	0.00%	0.00%	0.00%	0.00%	0.00%	0.00%
Orange County Global Med	0.00%	0.00%	0.00%	0.00%	0.00%	0.00%	0.00%	0.00%	0.00%	0.00%	0.00%	0.00%
Placentia Linda Hospital	0.11%	2.40%	0.00%	0.00%	0.00%	0.00%	0.00%	0.00%	0.00%	0.00%	0.00%	0.00%
Saddleback Memorial	0.00%	0.00%	0.00%	0.00%	0.00%	0.00%	0.00%	0.00%	0.00%	0.00%	0.00%	0.00%
South Coast Global	0.00%	0.00%	0.00%	0.00%	0.00%	0.00%	0.00%	0.00%	0.00%	0.00%	0.00%	0.00%
St Joseph	0.00%	0.00%	0.00%	0.00%	0.00%	0.00%	0.00%	0.00%	0.00%	0.00%	0.00%	0.00%
St. Jude Medical Ctr	0.00%	0.00%	0.00%	0.00%	0.00%	0.00%	0.00%	0.00%	0.00%	0.00%	0.00%	0.00%
UCI	0.25%	0.00%	0.38%	0.00%	0.00%	0.00%	0.00%	0.00%	0.00%	0.00%	0.00%	0.00%
West Anaheim Medical Ctr	0.00%	0.00%	0.00%	0.00%	0.00%	0.00%	0.00%	0.00%	0.00%	0.00%	0.00%	0.00%

Highlighted in Red = Diversion Any Amount



# CT Diversion Report- Percent of Time

CT Diversion 2017

	Jan	Feb	Mar	Apr	May	Jun	Jul	Aug	Sept	Oct	Nov	Dec
Anaheim Global Medical Ctr	3.95%	3.92%	0.00%	1.70%	0.00%	0.00%	0.00%	0.00%	0.00%	0.00%	0.00%	0.00%
Anaheim Regional Med Ctr	0.26%	0.70%	0.58%	0.00%	0.00%	0.00%	0.00%	0.00%	0.00%	0.00%	0.00%	0.00%
Chapman Global Medical Ctr	0.00%	0.00%	0.00%	0.00%	0.00%	0.00%	0.00%	0.00%	0.00%	0.00%	0.00%	0.00%
CHOC	0.00%	0.00%	0.00%	0.00%	0.00%	0.00%	0.00%	0.00%	0.00%	0.00%	0.00%	0.00%
Foothill Regional Medical Ctr	0.00%	0.00%	0.00%	0.00%	0.00%	0.00%	0.00%	0.00%	0.00%	0.00%	0.00%	0.00%
Fountain Valley	0.44%	0.00%	1.03%	0.05%	0.00%	0.00%	0.00%	0.00%	0.00%	0.00%	0.00%	0.00%
Garden Grove Hospital	1.55%	0.39%	0.00%	2.04%	0.00%	0.00%	0.00%	0.00%	0.00%	0.00%	0.00%	0.00%
Hoag Hospital Irvine	0.66%	1.21%	0.00%	0.40%	0.00%	0.00%	0.00%	0.00%	0.00%	0.00%	0.00%	0.00%
Hoag Newport	0.00%	0.00%	0.00%	0.00%	0.00%	0.00%	0.00%	0.00%	0.00%	0.00%	0.00%	0.00%
Huntington Beach	0.03%	1.35%	0.00%	5.23%	0.00%	0.00%	0.00%	0.00%	0.00%	0.00%	0.00%	0.00%
Kaiser Anaheim	0.36%	0.22%	0.89%	0.46%	0.00%	0.00%	0.00%	0.00%	0.00%	0.00%	0.00%	0.00%
Kaiser Irvine	0.00%	0.00%	0.22%	0.00%	0.00%	0.00%	0.00%	0.00%	0.00%	0.00%	0.00%	0.00%
La Palma Intercommunity	0.00%	0.48%	0.00%	0.00%	0.00%	0.00%	0.00%	0.00%	0.00%	0.00%	0.00%	0.00%
Los Alamitos	0.00%	0.00%	0.00%	0.00%	0.00%	0.00%	0.00%	0.00%	0.00%	0.00%	0.00%	0.00%
Mission Hospital Laguna	0.34%	0.16%	4.14%	0.26%	0.00%	0.00%	0.00%	0.00%	0.00%	0.00%	0.00%	0.00%
Mission Hospital Mission	0.00%	0.00%	0.00%	0.00%	0.00%	0.00%	0.00%	0.00%	0.00%	0.00%	0.00%	0.00%
Orange Coast Memorial	0.19%	0.00%	0.00%	0.00%	0.00%	0.00%	0.00%	0.00%	0.00%	0.00%	0.00%	0.00%
Orange County Global Med	0.00%	0.00%	0.00%	0.00%	0.00%	0.00%	0.00%	0.00%	0.00%	0.00%	0.00%	0.00%
Placentia Linda Hospital	0.11%	2.40%	0.00%	0.00%	0.00%	0.00%	0.00%	0.00%	0.00%	0.00%	0.00%	0.00%
Saddleback Memorial	0.00%	0.00%	0.00%	0.00%	0.00%	0.00%	0.00%	0.00%	0.00%	0.00%	0.00%	0.00%
South Coast Global	4.09%	0.00%	0.00%	15.27%	0.00%	0.00%	0.00%	0.00%	0.00%	0.00%	0.00%	0.00%
St Joseph	0.00%	0.00%	0.00%	0.00%	0.00%	0.00%	0.00%	0.00%	0.00%	0.00%	0.00%	0.00%
St. Jude Medical Ctr	0.00%	0.00%	0.00%	0.00%	0.00%	0.00%	0.00%	0.00%	0.00%	0.00%	0.00%	0.00%
UCI	0.25%	0.00%	0.38%	0.00%	0.00%	0.00%	0.00%	0.00%	0.00%	0.00%	0.00%	0.00%
West Anaheim Medical Ctr	0.00%	0.00%	0.02%	0.39%	0.00%	0.00%	0.00%	0.00%	0.00%	0.00%	0.00%	0.00%

Highlighted in Red = Diversion Any Amount

