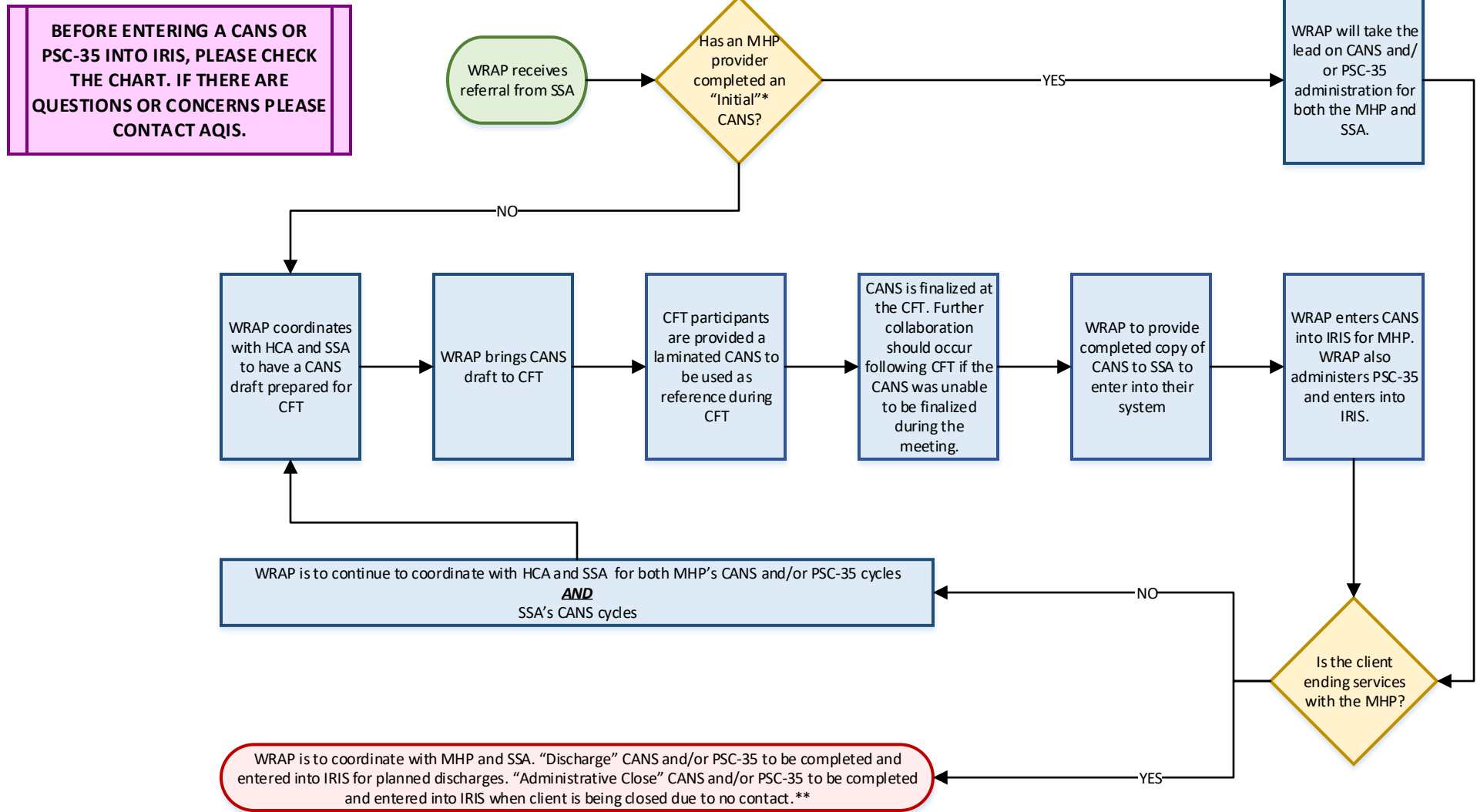


CANS Dependency Workflow – Open with WRAP

Youth has an open Child Welfare Case with SSA and has WRAP



***Initial Administration Deadline for WRAP:**
 Within 30 days if Initial CANS has not be administered by another MHP provider

Reassessment timelines will always follow the Initial CANS, regardless of when the re-assessment CANS is completed during the CFT. Reassessments are completed between five and seven months from the Initial or most recent Reassessment.

****See FAQ on differences between Discharge and Administrative Close and when to use**