

**OVERVIEW OF CURRENT SITUATION (1/13/21 1022)** Source: Johns Hopkins University & Medicine <https://coronavirus.jhu.edu/map.html>

Cases / Deaths  
 Worldwide: 91,923,640 / 1,969,996  
 Nationwide: 22,959,610 / 382,624  
 California: 2,816,766 / 31,163  
 Orange Co: 199,532 / 2,179 Source: [Orange County COVID-19 Case Counts & Testing Figures](#)

**ORANGE COUNTY PUBLIC HEALTH (as of 1/13/21 1200)**

[Orange County COVID-19 Summary\\* click for full details](#)

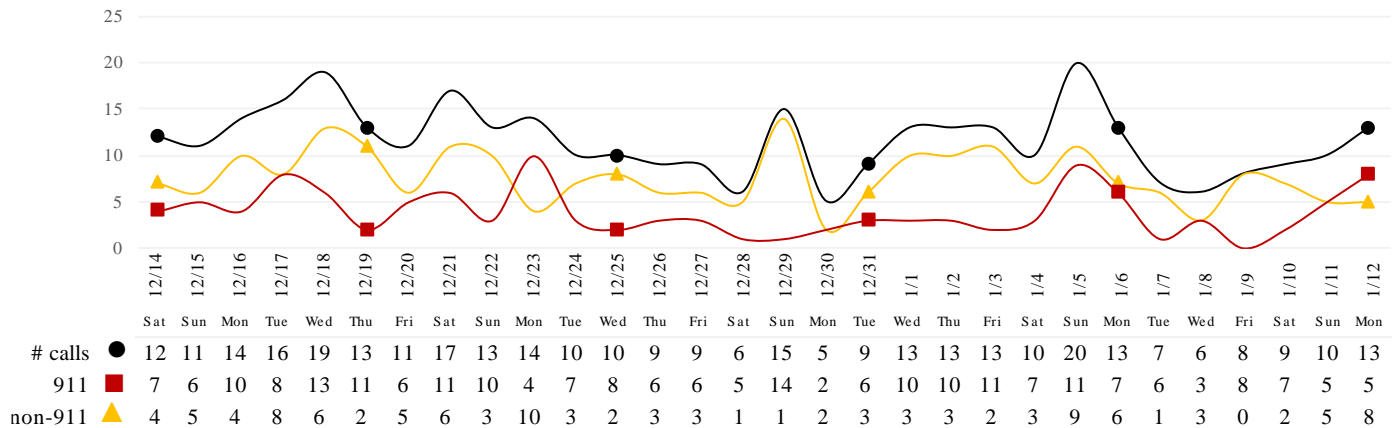
	Sat 1/9/21	Sun 1/10/21	Mon 1/11/21	Tue 1/12/21	Wed 1/13/21	Thu 1/14/21	Fri 1/15/21
Cases Reported to Date	185,481	188,602	191,861	195,685	199,532		
Deaths Reported to Date	2,041	2,091	2,120	2,148	2,179		
Tests Reported Today	17,080	33,470	26,231	16,401	20,812		
Cumulative Tests to Date	2,223,962	2,257,432	2,283,663	2,300,064	2,320,876		

*\*Data posted is always preliminary & subject to change. More information may become available as individual case investigations are completed. **LOCAL DATA MAY BE DIFFERENT FROM THE STATE WEBSITE DATA.***

**SKILLED NURSING/ASSISTED LIVING/RESIDENTIAL CARE FACILITY – TRENDS**

\*Data Source: Orange County Medical Emergency Data System (OC-MEDS) – Updated 1/12/21

**Calls to SNFs/Congregate Living with Primary Impressions: Fever/Cough, Influenza-like Illnesses**  
 (Transports to ERCs Only - Last 30 Days)



\*Data Source: California Department of Public Health (CDPH)

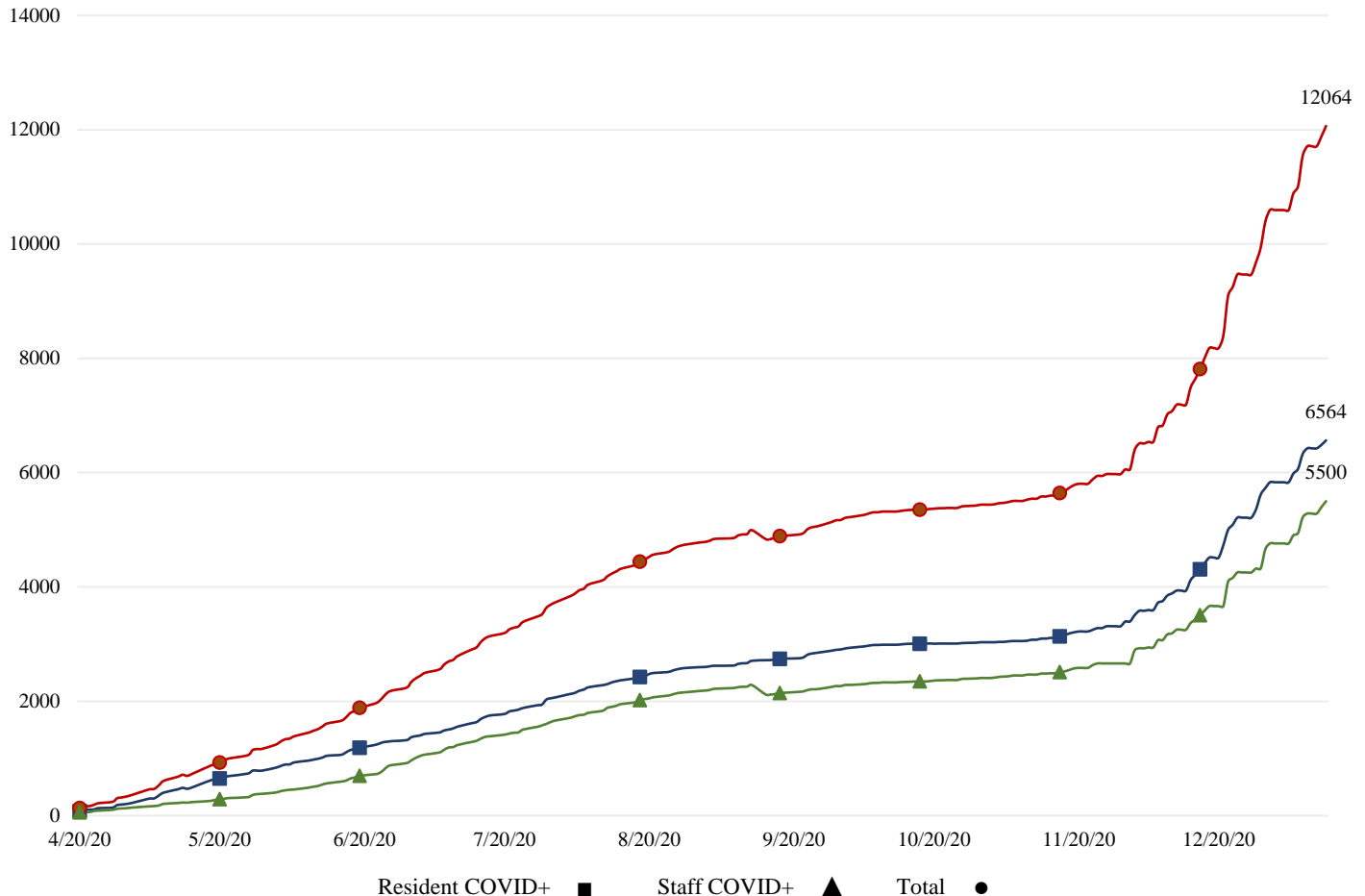
**Skilled Nursing/Assisted Living/Residential Care Facility PPE / Ventilator Supplies Days on Hand  
 (73/73 SNFs reported)**

Reporting Date: 1/12/2021	0 - 3 days	4 - 7 days	8-14 days	15+ days
N95 Masks	0	4	13	56
Surgical Masks	0	4	12	57
Eye Protection	0	4	12	57
Gowns	0	4	13	56
Gloves	0	5	14	54
Alcohol-Based Hand Sanitizer	0	5	14	54

\*Data Source: Orange County Health Care Agency – Public Health

\*\*NOTE\*\*: Decrease in the COVID + in staff seen on graph is due to data being cleaned and removing duplicates of those that work in multiple OC facilities or are contract staff and care for residents at multiple facilities.

### COVID+ in Congregate Healthcare\*



\*Data Source: Orange County Health Care Agency – Public Health

### Current Facility Outbreaks (as of 1/13/21 1000)

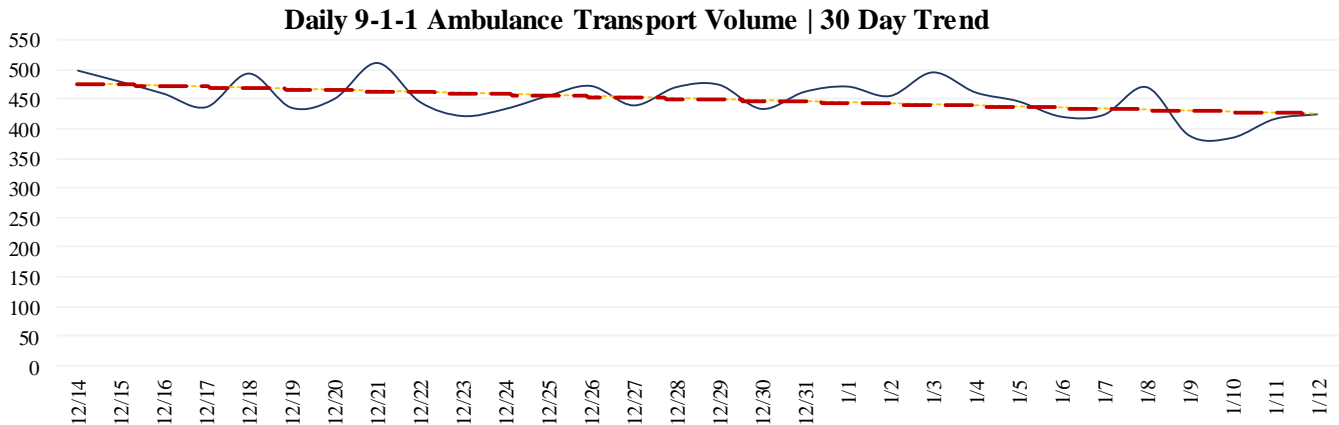
An "Outbreak" is two (2) or more confirmed cases of COVID-19 in facility occurring within 14 days.

Facility Type by Licensing Category, Count		Facility Name Alphabetical
Skilled Nursing Facility	37	Anaheim Terrace Care Center, Buena Park Nursing Center, Buena Vista Care Center, Chapman Care Center, Extended Care Hospital Of Westminster, Flagship Healthcare Center, Freedom Village Healthcare Center, French Park Care Center, Garden Grove Convalescent Hospital, Gordon Lane Care Center, La Palma Nursing Center, Laguna Hills Health And Rehabilitation Center, Lake Forest Nursing Center, Leisure Court Nursing Center, Mainplace Post Acute, Manorcare Health Services (Fountain Valley), New Orange Hills, Newport Subacute Healthcare Center, Park Anaheim Healthcare Center, Park Regency Care Center, Park Vista At Morningside (Snf), Rowntree Gardens Elmwood, Seal Beach Health And Rehabilitation Center, Serento Rosa (Snf), St. Catherine, St. Edna Subacute And Rehabilitation Center, St. Elizabeth Healthcare Center, Stanley Healthcare Center, Sun Mar Nursing Center, Terrace View Care Center, The Hills Post Acute, The Pavilion At Sunny Hills, Town And Country Manor, Victoria Healthcare And Rehabilitation Center, Villa Valencia (Snf), West Anaheim Extended Care, Windsor Gardens Convalescent Center Of Anaheim
Elderly Assisted Living	46	Adeline's Guest Home, Aegis Assisted Living Of Laguna Niguel, Agape Orange Home Ii, Anaheim Crown Plaza, Brookdale Brookhurst, Brookdale Irvine, Brookdale Valley View, Care Jeselle (Orange), Carmel Village Retirement Community, Emerald Court, Freedom Village, Fullerton Rosewood Assisted Living, Fullerton Villa, Garden Grove Guest Home, Heritage Pointe, Irvine Cottage No.14, Kirkwood Orange, Leriza's Guest Home, Mainplace Senior Living, Maryknoll Senior Care, Meadowlark Gardens V, Mirada Manor B&C, Newport Beach Memory Care, Oakmont Of Huntington Beach, Pacifica Royale Assisted Living Community, Palm Retirement Center, San Clemente Villas By The Sea, Sandy Creek Care Home Ii, Sea Cliff Assisted Living, Seaside Terrace Retirement Community, Serento Rosa (Alf), Shalin Care Ii, Silverado Brea Llc, Silverado Senior Living - Newport Mesa, Silverado Senior Living - San Juan Capistrano, St. Francis Home, Steadfast (Western), Sunflower Gardens, Sunrise Assisted Living Of Fullerton, Sunrise At Yorba Linda, Sunrise Of Mission Viejo, Sunrise Of Seal Beach, Sunrise Villa Bradford, Vividus Senior Living (Laguna Niguel), Wellington, West Glenn Manor

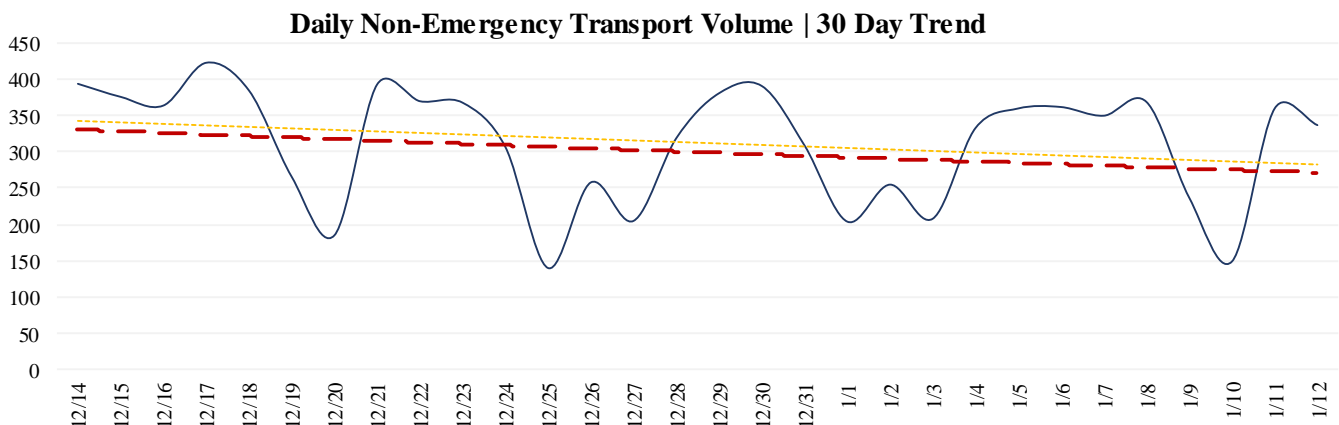
## EMERGENCY MEDICAL SERVICES STATUS

\*Data Source: Orange County Medical Emergency Data System (OC-MEDS)

9-1-1 ambulance transport volume were lower the last couple days. Volume is averaging about 5% below normal (pre-COVID) levels (Updated 1/13/21).

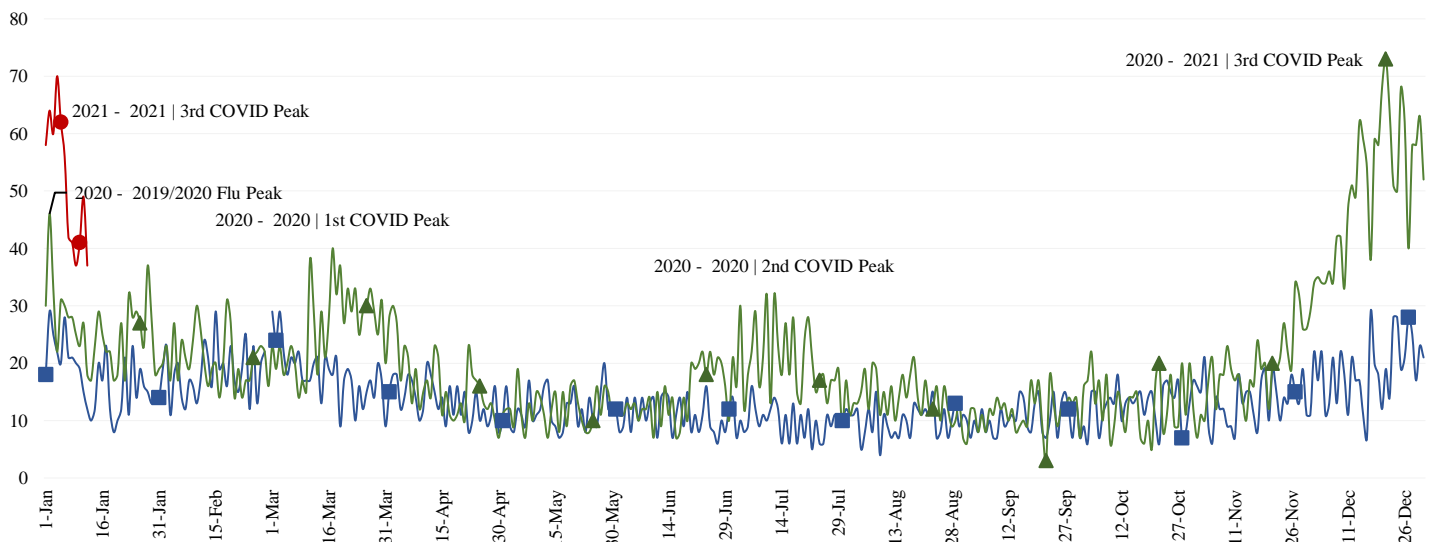


Non-emergency ambulance transports have continued far lower than normal. Transport volume is averaging about 30-35% below normal (pre-COVID) levels overall (Updated 1/13/21).



Primary Impressions of Cold/Flu/ILI by 9-1-1 EMS providers has declined over the last few days. (Updated 1/13/21).

## EMS Provider Impressions - Cold/Flu/ILI/COVID-19 Year Over Year Comparison (2019 ■, 2020 ▲, & 2021 ●)



- Ambulance Patient Offload Time (APOT) is defined as the time the ambulance arrives at the receiving destination (wheels stop) to the time that the ambulance crew physically transfers the patient to the ED gurney. Last 24 hours: **Current Average APOT is: 19m49s / Current 90th Percentile APOT is: 45m26s**

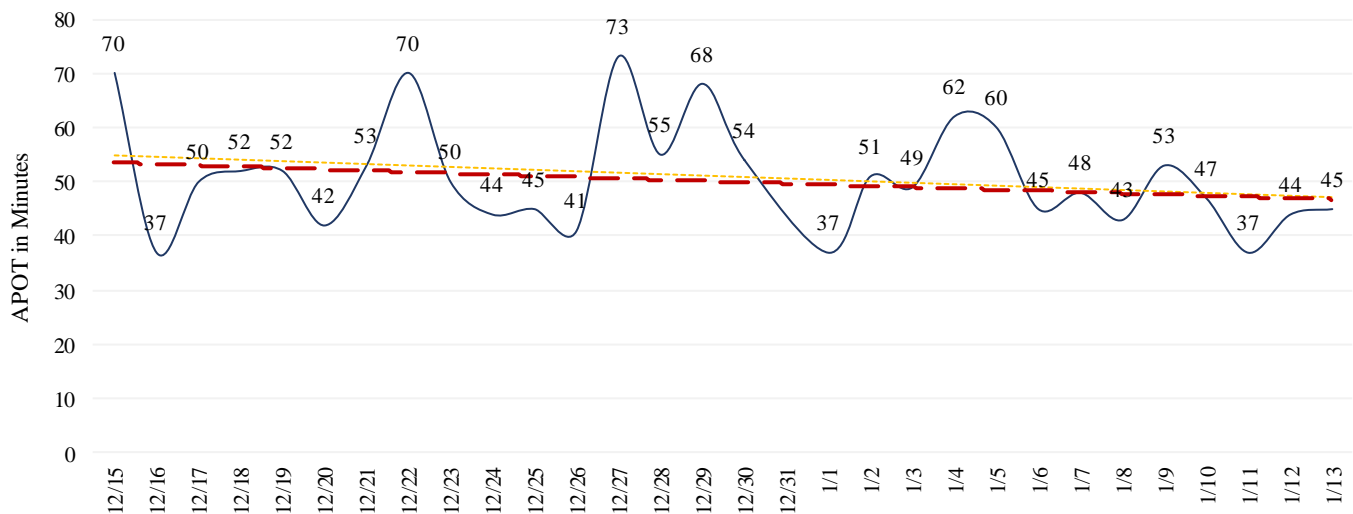
The chart below displays a daily trend over the last 30 days.

- Thirteen (13) ERCs had APOT times greater than thirty (30) minutes.
- Eight (8) ERCs had APOT times greater than sixty (60) minutes.

*Note: a handful of ERCs were close to the 30 minute threshold, but were not over it.*

\*Data Source: Orange County Medical Emergency Data System (OC-MEDS) – Updated 1/13/21

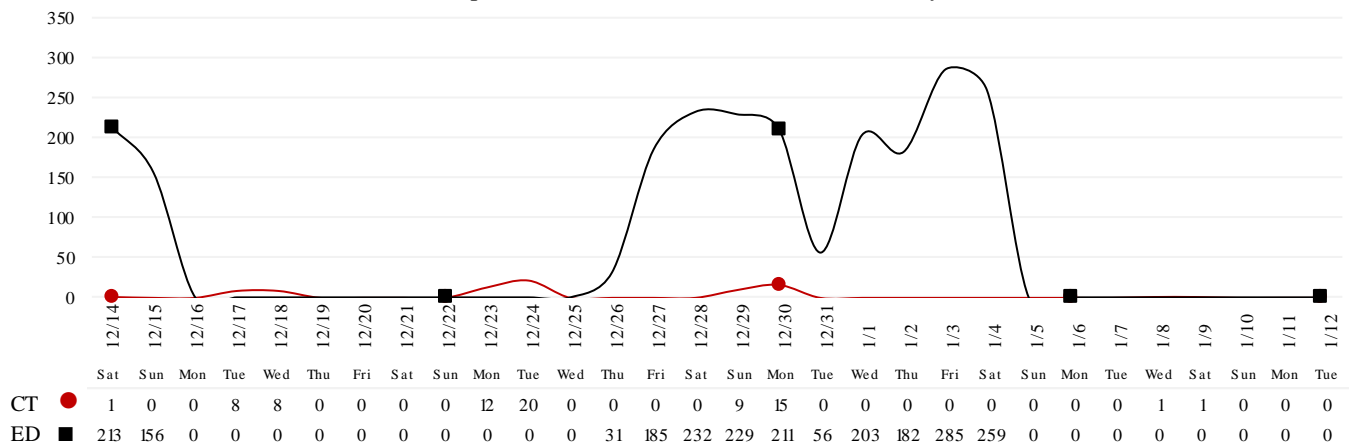
### COVID 19 - APOT 90th percentile | Daily Trend



- Emergency Department (ED) Diversion & Computerized Tomography (CT) (ED closed to all ambulance transport due to no ED capacity or no CT available) for the last 30 days 12/14/20 – 1/12/21 below.
- NOTE: Suspension of Hospital Diversion was reinstated, 1/4/21, @ 1900.**

\*Data Source: Orange County Medical Emergency Data System (OC-MEDS) – Updated 1/12/21

### Hours of Diversion per 24-Hour Period (25 Hospitals, rounded to nearest hour - Last 30 Days)



1/13/21

**26):** Anaheim Regional, Anaheim Global, Chapman Global, CHOC, CHOC at Mission, Foothill, Fountain Valley, Garden Grove, Hoag-Irvine, Hoag-Newport Beach, Huntington Beach, Kaiser-Anaheim, Kaiser-Irvine, La Palma, Los Alamitos, Mission-Laguna Beach, Mission-Mission Viejo, Orange Coast Memorial, Orange County Global, Placentia Linda, Saddleback Memorial, Saint Jude, South Coast Global, St. Josephs, UCI, West Anaheim

\*Data Source: California Department of Public Health (CDPH) – Snowflake server

Current Snowflake Data Dictionary may be found at:

[https://www.calhospital.org/sites/main/files/file-attachments/data\\_dictionary\\_cha\\_covid\\_tracker\\_4-17-20.pdf](https://www.calhospital.org/sites/main/files/file-attachments/data_dictionary_cha_covid_tracker_4-17-20.pdf)

ALL HOSPITALS (33)															
DATE	Census ALL	Occupancy % *****	COVID+ Hospitalized	COVID+ ICU	ICU Occupied Adult	ICU Available Adult	% ICU Beds Adult Available	ICU Occupied Peds	ICU Available Peds	% ICU Beds Peds Available	ICU CDPH OC Occupied **	ICU CDPH OC Available ***	% ICU CDPH OC Available ****	% ICU Beds System Available *****	% Ventilators Available
12/26	4026	75%	1990	443	591	54	8%	23	45	66%	713	99	14%	25%	45%
12/27	4181	77%	2031	453	609	46	7%	22	46	68%	723	92	13%	24%	42%
12/28	4167	76%	2106	473	578	64	10%	25	43	63%	710	107	15%	26%	42%
12/29	4296	77%	2145	479	609	46	7%	44	24	35%	723	70	10%	22%	40%
12/30	4301	78%	2128	495	628	47	7%	31	37	54%	743	84	11%	22%	40%
12/31	4272	77%	2097	501	624	58	9%	30	38	56%	750	96	13%	22%	39%
1/1	4181	75%	2057	506	623	52	8%	34	34	50%	743	86	12%	22%	37%
1/2	4161	75%	2136	487	605	48	7%	33	35	51%	721	83	12%	22%	35%
1/3	4241	76%	2178	500	628	46	7%	30	38	56%	742	84	11%	22%	33%
1/4	4223	76%	2236	504	625	40	6%	20	48	71%	733	88	12%	22%	31%
1/5	4320	77%	2249	485	635	47	7%	30	38	56%	750	85	11%	21%	32%
1/6	4354	78%	2251	502	630	41	6%	29	39	57%	739	80	11%	21%	33%
1/7	4394	78%	2259	514	638	34	5%	27	41	60%	740	75	10%	21%	34%
1/8	4411	80%	2221	528	601	37	6%	27	41	60%	706	78	11%	21%	34%
1/9	4363	79%	2216	547	605	45	7%	18	50	74%	718	95	13%	23%	36%
1/10	4403	80%	2221	544	608	42	6%	26	42	62%	718	84	12%	23%	35%
1/11	4318	78%	2200	535	597	44	7%	25	43	63%	709	87	12%	23%	34%
1/12	4310	78%	2180	544	599	48	7%	25	37	60%	709	85	12%	22%	35%

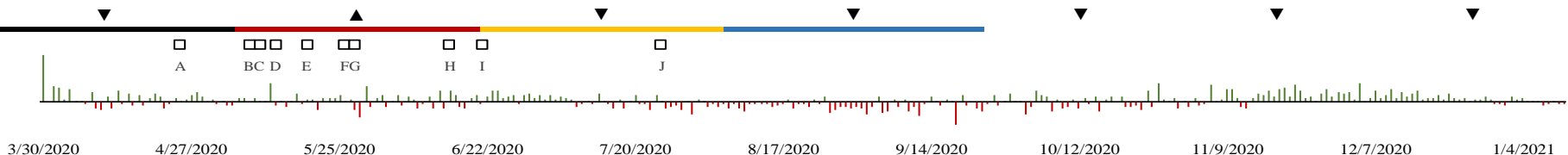
\*\*ICU CDPH OC Occupied – CDPH combines occupied ICU adult beds and occupied ICU pediatric beds as a reporting metric on their COVID-19 Hospital dashboard. \*\*\*ICU CDPH OC Available – CDPH subtracts the sum of occupied ICU adult beds and occupied ICU pediatric beds, from the sum of ICU total adult beds and ICU total pediatric beds to determine ICU available beds on their COVID-19 Hospital dashboard. \*\*\*\*% ICU CDPH OC Available – The sum of occupied ICU adult beds and occupied ICU pediatric beds, divided by the sum of ICU total adult beds and ICU total pediatric beds, as a percentage. \*\*\*\*\* ICU Beds System Available – All ICU beds reported as available in Orange County, which includes Adult, PICU, and NICU, and any other ICU bed types. \*\*\*\*\* Occupancy % - Census all, divided by system beds total, excluding surge capacity.

1/13/21

COVID 19 ORANGE COUNTY HOSPITAL SYSTEM DATA (CA SNOWFLAKE SERVER)

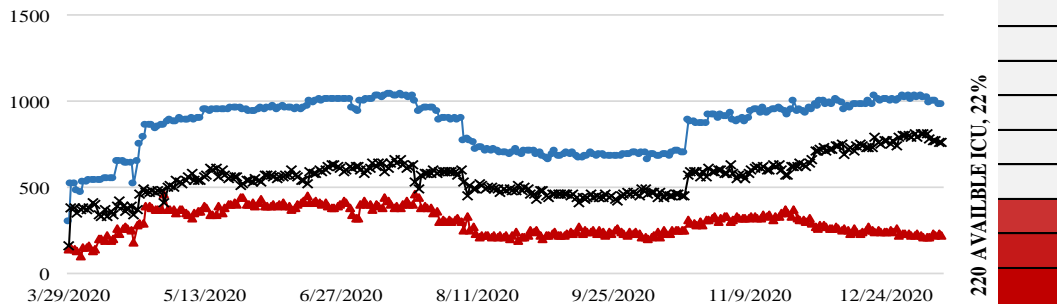
NON-ICU - 01/12/21 X ICU - 01/12/21 ▲ ED OVERFLOW - 01/12/21 ◆ SYSTEM - 01/12/21 ● 1 DAY +/- (01/11/21) 3 DAY +/- (01/10/21) 7 DAY +/- (01/06/21)

1636 -29 -1.7% 544 9 1.7% 129 -9 -6.5% 2180 -20 -0.9% 2180 -20 -0.9% 2221 -41 -1.8% 2251 -71 -3.2%

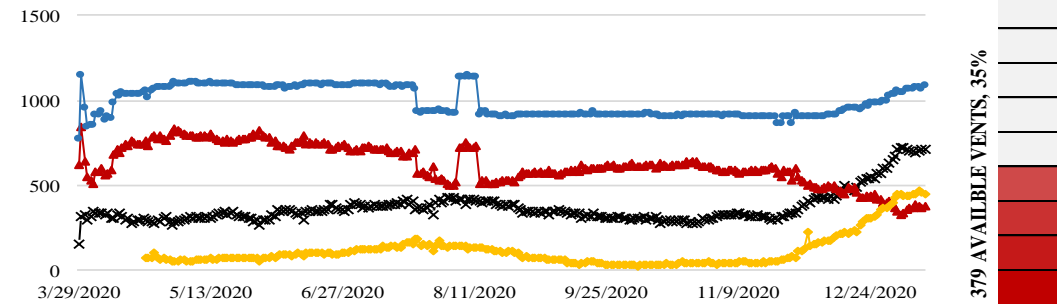


A. Face Covers Mandatory, B. Cinco de Mayo, C. OC Beaches Open, D. Mom's Day, E. OC Parks Parking Open, F. OC Stage 2 Approved, G. Memorial Day, H. Re-open entertainment, etc., I. CA Gov. Mask Mandate, J. Changes to data collection, Federal

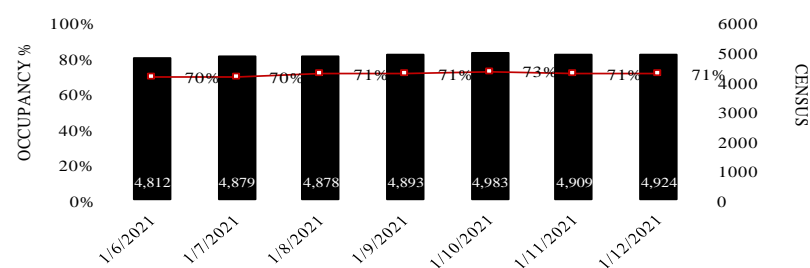
ICU CENSUS - (01/12/21) | ● SYSTEM- 984 | ▲ AVAILABLE- 220 (22%) | X OCCUPIED- 764



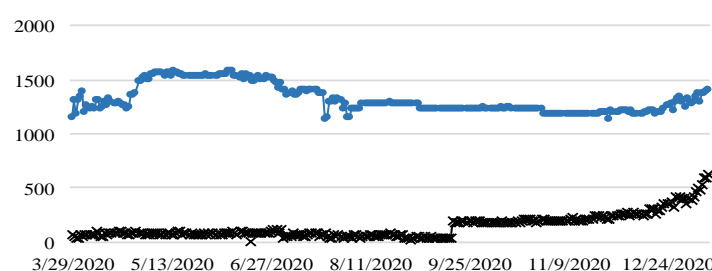
VENTILATORS - (01/12/21) | ● SYSTEM- 1085 | ▲ AVAILABLE- 379 (35%) | X OCCUPIED- 706 | ◆ COVID



7-DAY HISTORY BED OCCUPANCY - (01/12/21) | IN-PATIENT BEDS- 4924 (71%)

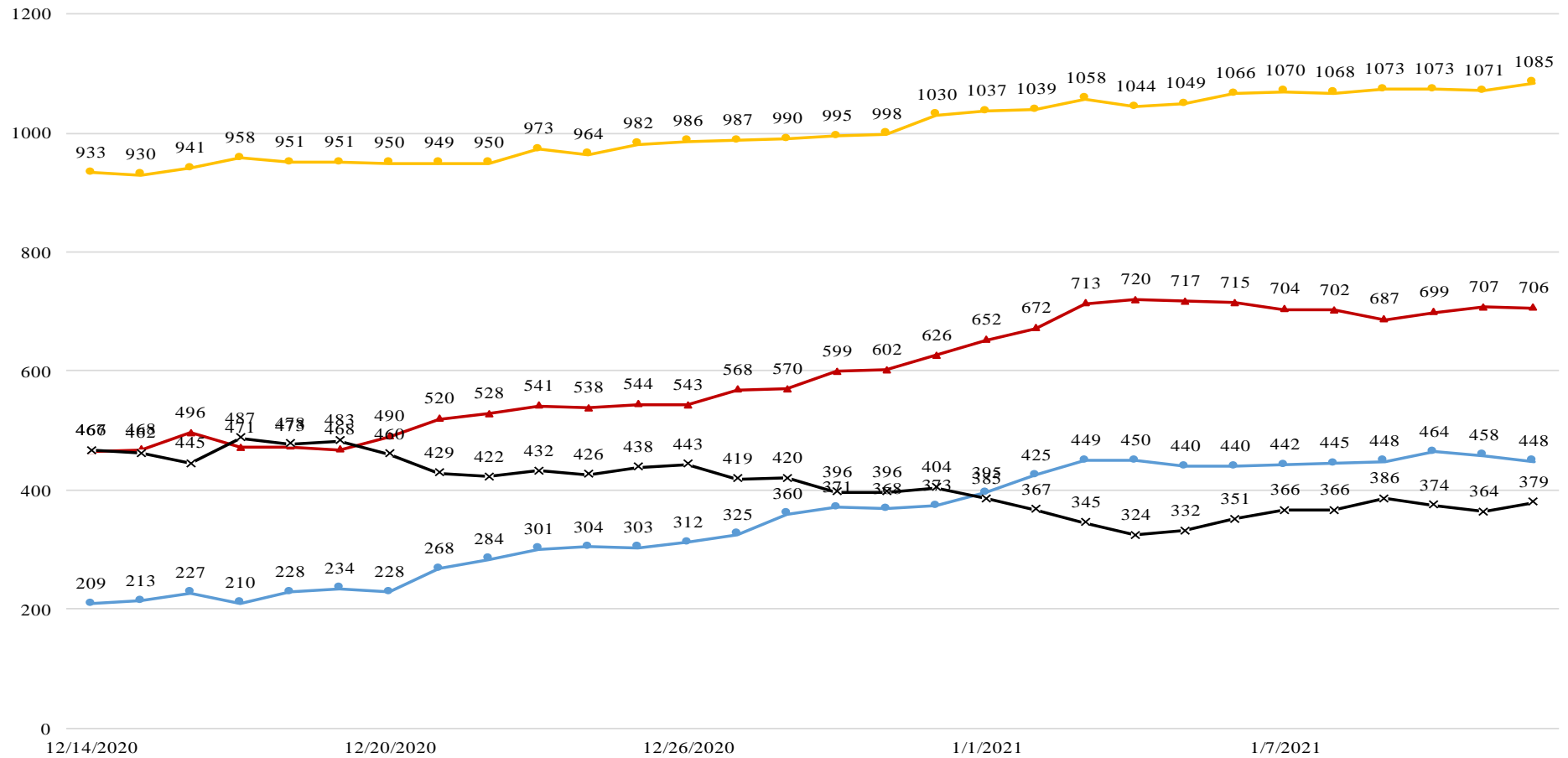


SURGE CENSUS - (01/12/21) | X OCCUPIED- 614 | ● SYSTEM- 1390



1/13/21

**COVID 19 ORANGE COUNTY HOSPITAL SYSTEM DATA (CA SNOWFLAKE SERVER)**  
**VENTILATORS IN USE (12/14/20 - 01/12/21) | 33 ACUTE CARE FACILITIES REPORTING**



DATE	12/14	12/15	12/16	12/17	12/18	12/19	12/20	12/21	12/22	12/23	12/24	12/25	12/26	12/27	12/28	12/29	12/30	12/31	1/1	1/2	1/3	1/4	1/5	1/6	1/7	1/8	1/9	1/10	1/11	1/12
COVID+ ●	209	213	227	210	228	234	228	268	284	301	304	303	312	325	360	371	368	373	395	425	449	450	440	440	442	445	448	464	458	448
SYSTEM OCC ▲	466	468	496	471	473	468	490	520	528	541	538	544	543	568	570	599	602	626	652	672	713	720	717	715	704	702	687	699	707	706
SYSTEM AVL ✕	467	462	445	487	478	483	460	429	422	432	426	438	443	419	420	396	396	404	385	367	345	324	332	351	366	366	386	374	364	379
SYSTEM TTL ◆	933	930	941	958	951	951	950	949	950	973	964	982	986	987	990	995	998	1030	1037	1039	1058	1044	1049	1066	1070	1068	1073	1073	1071	1085

COVID+ = CONFIRMED AND SUSPECTED PATIENTS ON A VENTILATOR

\*OCC = VENTILATORS IN USE, INCLUDING COVID+ PATIENTS AND OTHER VENT PATIENTS

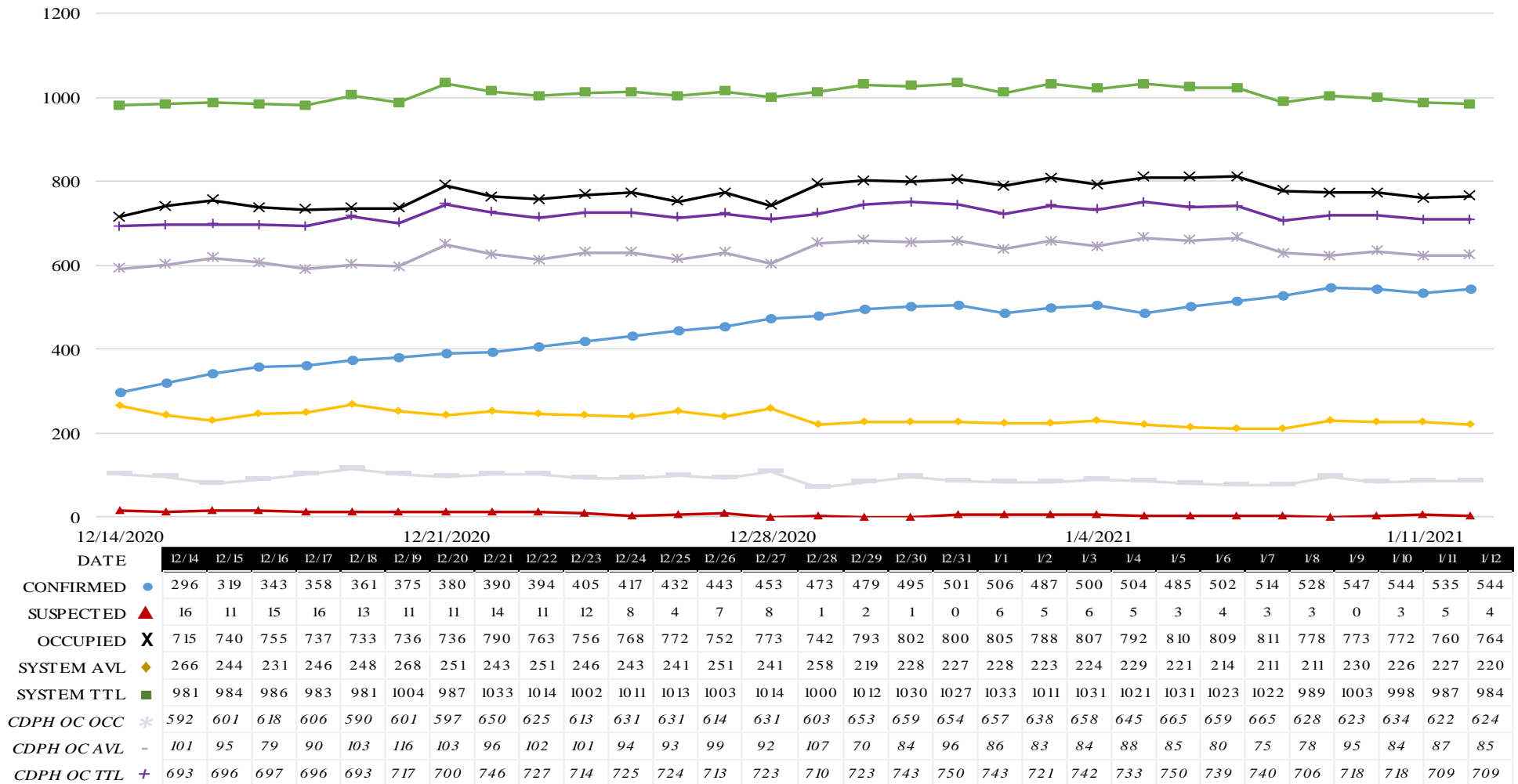
\*\*AVL = AVAILABLE VENTILATORS IN SYSTEM

\*\*\*TTL = TOTAL VENTILATORS IN SYSTEM



1/13/21

**COVID 19 ORANGE COUNTY HOSPITAL SYSTEM DATA (CA SNOWFLAKE SERVER)**  
**ICU BEDS (12/14/20 - 01/12/21) | 33 ACUTE CARE FACILITIES REPORTING**



\*AVL = AVAILABLE NON SURGE ICU BEDS. PRIOR TO 7/22 DEFINITION DID NOT EXCLUDE NONSURGE.

\*\*TTL = TOTAL NON SURGE ICU BEDS. PRIOR TO 7/22 DEFINITION DID NOT EXCLUDE NONSURGE.

\*\*\* AS OF 10/20/2020 SPIKE IN SYSTEM TTL, OCCUPIED AND AVAILABLE DUE TO CHANGE IN CHOC ORANGE REPORTED VALUES.

\*\*\*\* CDPH OC OCC = Adult ICU Occupied + Pediatric ICU Occupied

\*\*\*\*\* CDPH OC AVL = (Adult ICU Total Beds + Pediatric ICU Total Beds) - (Adult ICU Occupied + Pediatric ICU Occupied)

\*\*\*\*\* CDPH OC TTL = Adult ICU Total + Pediatric ICU Total



\*Data Source: California Department of Public Health (CDPH) – Snowflake server

\*\*Current Snowflake Data Dictionary may be found at:

[https://www.calhospital.org/sites/main/files/file-attachments/data\\_dictionary\\_cha\\_covid\\_tracker\\_4-17-20.pdf](https://www.calhospital.org/sites/main/files/file-attachments/data_dictionary_cha_covid_tracker_4-17-20.pdf)

**Acute Care Hospital PPE / Ventilator Supplies Days on Hand – (29/33 ACHs reported)**

Reporting Date: 1/12/21*	30 days +	15-30 days	7-14 days	4-6 days	0-3 days	Not Reported
Ventilator Supplies**	7	6	14	2	0	4
N95 Masks**	19	6	4	0	0	4
Surgical Masks**	19	9	1	0	0	4
Face Shields**	18	4	2	4	1	4
Gloves**	14	5	4	4	2	4
Gowns**	13	11	3	2	0	4

\*Data Source: ReddiNet

**Reported Service Category Status (25/25 ACHs w/EDs reported)**

Reporting Date: 1/13/21	Count	% of Total
Command Center Activated	19	76%
Surge Plan Activated	22	88%
Canceled Procedures/Services	25***	100%
Supply Issues	10	40%
CDPH Flex	17	68%
Increased Morgue Capacity	23	92%

\*\*\*[California Public Health Officer Order regarding Crisis Care Strategies issued on January 5, 2021.](#)

**Hospital Criteria for shifting to Crisis Care Strategies**

**LEGEND**

CRITERIA	STATUS		
	Normal Operations	Modified Operations	Modified Operations Assistance Needed
Rate of change in Hospitalized COVID-19 patients (doubling time over last 7 days)	Never to 4 weeks to double	4 weeks to 2 weeks to double	Less than 2 weeks to double
Absolute COVID-19 Census in the hospitals across Orange County	Less than 750	750-1500	>1500
Hospital census as a percentage of staffed capacity	<80%	80% to 90%	>90%
Hospital ICU census as a percentage of staffed ICU capacity	<70%	70% to 85%	>85%

**Hospital Criteria for shifting to Crisis Care Strategies**

**1/12/21**

CRITERIA	STATUS		
	Normal Operations	Modified Operations Under Control	Modified Operations Assistance Needed
Rate of change in Hospitalized COVID-19 patients (doubling time over last 7 days)	Declining		
Absolute COVID-19 Census in the hospitals across Orange County			2180
Hospital census as a percentage of staffed capacity	78%		
Hospital ICU census as a percentage of staffed ICU capacity			89%

### AGENCY OPERATIONS CENTER / LOGISTICS SECTION

- The AOC is activated M-F 0900-1600 at Level I; Warehouse Ops are M-F - 0900-1600.
- SCARCE Resources: Gloves, Wipes, Syringes, Needles

#### Total Activity – Updated 1/12/21 at 1530

INQUIRIES	RR RECEIVED	RR FILLED
17,412 <b>+78</b>	10,059 <b>+126</b>	8,173 <b>+47</b>
Total Denied Requests: <b>830</b> / Total Redacted Requests: <b>905</b>		

#### Logistics Daily Units Distributed 1/12/21

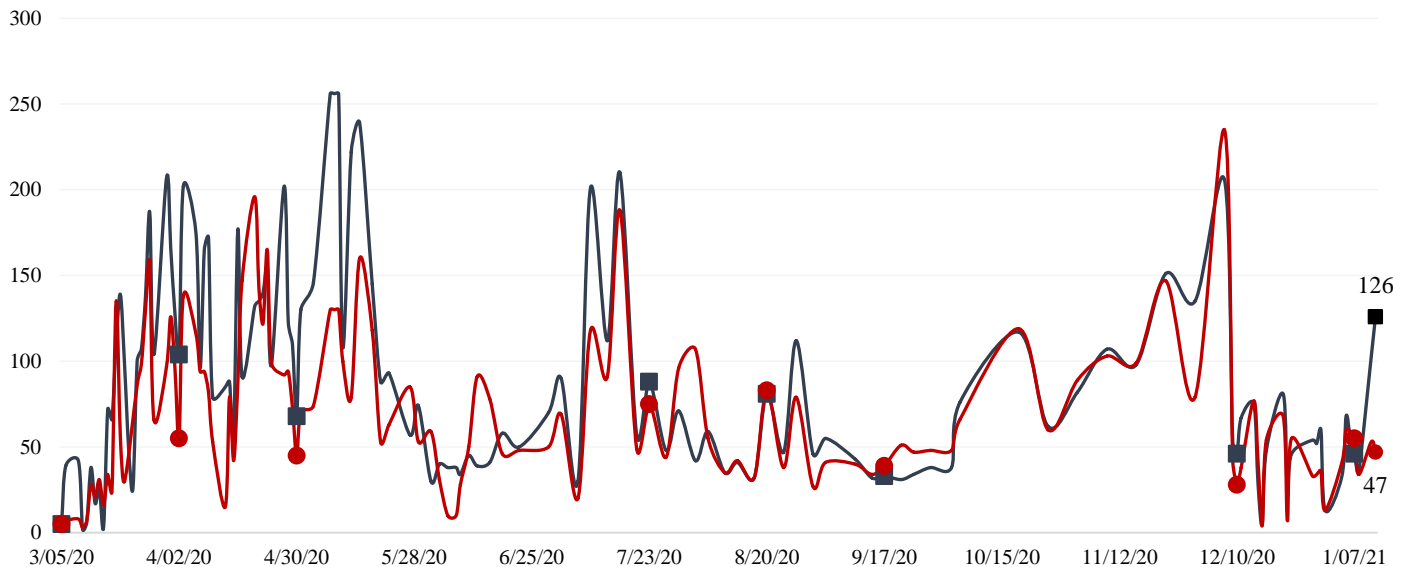
N95 Mask	0
Surgical Mask	6,000
Gown	2,100
Gloves	105,500
Face Shields/Eye Protection	5,000
Hand Sanitizer	250
Other	149,781
<b>Total Units</b>	<b>268,631</b>

#### Inventory Report February 18 to January 12, 2021

Medical Supply/Equipment Total Units Distributed	
N95 Mask	5,032,515
Surgical Mask	1,996,905
Gowns	2,600,266
PPE-Suit	17,965
Gloves	5,250,550
Eye Protection	402,619
Hand Sanitizer	312,527
Other Items	2,224,643
<b>Total Units</b>	<b>17,837,990</b>

#### Resource Requests - Updated 1/12/21 at 1530

Received ■ Filled ●







## MOBILE FIELD HOSPITALS

