

**OVERVIEW OF CURRENT SITUATION (1/8/21 1122)**

Source: Johns Hopkins University & Medicine <https://coronavirus.jhu.edu/map.html>

Cases / Deaths  
 Worldwide: 88,589,250 / 1,907,068  
 Nationwide: 21,776,072 / 367,635  
 California: 2,594,854 / 28,634  
 Orange Co: 181,277 / 1,998 Source: [Orange County COVID-19 Case Counts & Testing Figures](#)

**ORANGE COUNTY PUBLIC HEALTH (as of 1/8/21 1200)**

**Orange County COVID-19 Summary\* click for full details**

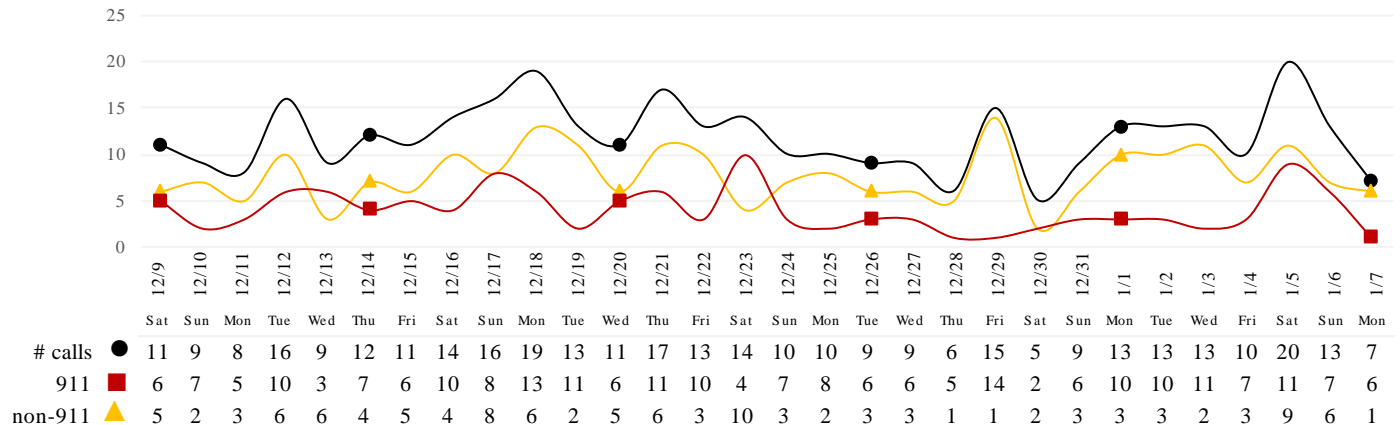
	Sat 1/2/21	Sun 1/3/21	Mon** 1/4/21	Tue 1/5/21	Wed 1/6/21	Thu 1/7/21	Fri 1/8/21
Cases Reported to Date	**	**	170,579	171,995	175,032	181,277	
Deaths Reported to Date	**	**	1,926	1,926	1,943	1,998	
Tests Reported Today	**	**	33,817	17,427	20,003	27,224	
Cumulative Tests to Date	**	**	2,110,313	2,127,740	2,147,743	2,206,882	

\*Data posted is always preliminary & subject to change. More information may become available as individual case investigations are completed. **LOCAL DATA MAY BE DIFFERENT FROM THE STATE WEBSITE DATA.** \*\* Count includes data for the following days: 1/1/21-1/3/21 and 1/4/21 until 12 PM, instead of 6 AM.

**SKILLED NURSING/ASSISTED LIVING/RESIDENTIAL CARE FACILITY – TRENDS**

\*Data Source: Orange County Medical Emergency Data System (OC-MEDS) – Updated 1/7/21

**Calls to SNFs/Congregate Living with Primary Impressions: Fever/Cough, Influenza-like Illnesses**  
 (Transports to ERCs Only - Last 30 Days)



\*Data Source: California Department of Public Health (CDPH)

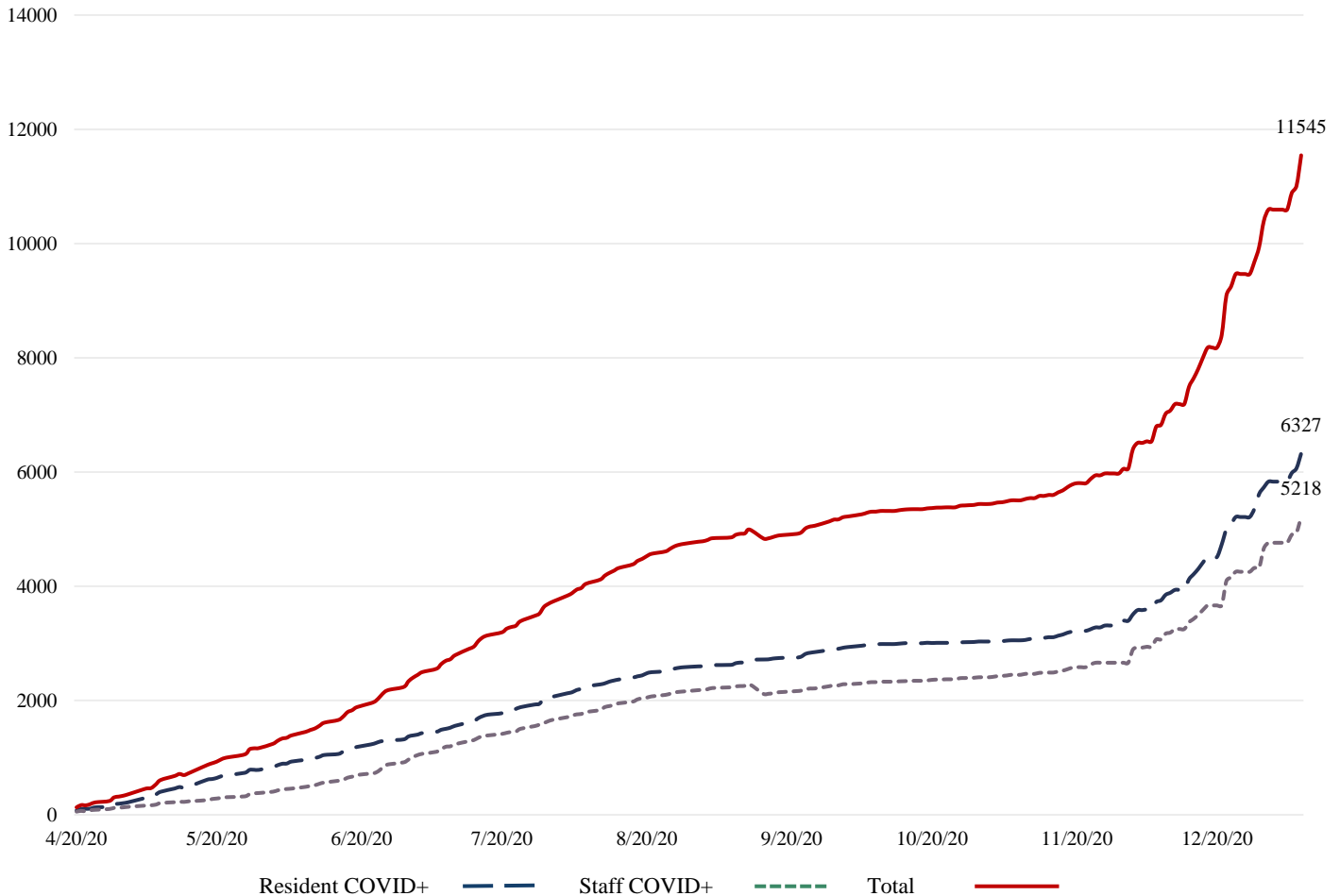
**Skilled Nursing/Assisted Living/Residential Care Facility PPE / Ventilator Supplies Days on Hand  
 (70/73 SNFs reported)**

Reporting Date: 1/8/2021	0 - 3 days	4 - 7 days	8-14 days	15+ days
N95 Masks	0	4	13	53
Surgical Masks	0	4	12	54
Eye Protection	0	4	11	55
Gowns	0	5	9	56
Gloves	0	4	11	55
Alcohol-Based Hand Sanitizer	0	5	11	54

\*Data Source: Orange County Health Care Agency – Public Health

\*\*NOTE\*\*: **Decrease** in the COVID + in staff seen on graph is **due to data being cleaned and removing duplicates** of those that work in multiple OC facilities or are contract staff and care for residents at multiple facilities.

**COVID+ in Congregate Healthcare\***



\*Data Source: Orange County Health Care Agency – Public Health

**Current Facility Outbreaks (as of 1/8/21 1000)**

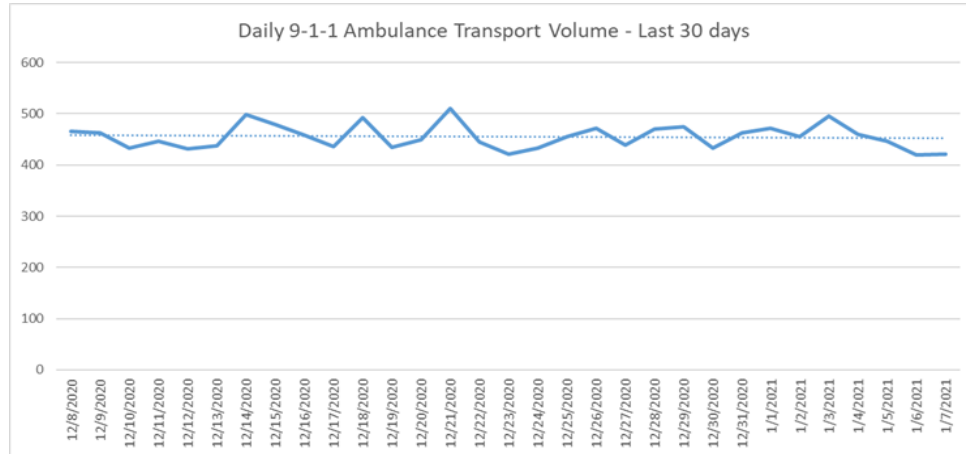
*An “Outbreak” is two (2) or more confirmed cases of COVID-19 in facility occurring within 14 days.*

Facility Type by Licensing Category, Count		Facility Name Alphabetical
Skilled Nursing Facility	46	Alamitos West Health & Rehabilitation, Alta Gardens Care Center, Anaheim Crest Nursing Center, Anaheim Terrace Care Center, Buena Park Nursing Center, Buena Vista Care Center, Capistrano Beach Care Center, Chapman Care Center, Country Villa Plaza Convalescent Center, Coventry Court Health Center, Crystal Cove Care Center, Extended Care Hospital Of Westminster, Flagship Healthcare Center, Freedom Village Healthcare Center, French Park Care Center, Garden Grove Convalescent Hospital, Garden Park Care Center, Gordon Lane Care Center, La Palma Nursing Center, Laguna Hills Health And Rehabilitation Center, Lake Forest Nursing Center, Leisure Court Nursing Center, Mainplace Post Acute, Manorcare Health Services (Fountain Valley), Mission Palms Healthcare Center, New Orange Hills, Newport Subacute Healthcare Center, Park Anaheim Healthcare Center, Park Regency Care Center, Park Vista At Morningside (Snf), Regents Point - Windcrest, Rowntree Gardens Elmwood, Sea Cliff Healthcare Center, Seal Beach Health And Rehabilitation Center, Serento Rosa (Snf), South Coast Post Acute, St. Edna Subacute And Rehabilitation Center, St. Elizabeth Healthcare Center, Stanley Healthcare Center, Sun Mar Nursing Center, The Hills Post Acute, The Pavilion At Sunny Hills, Town And Country Manor, Victoria Healthcare And Rehabilitation Center, West Anaheim Extended Care, Windsor Gardens Convalescent Center Of Anaheim
Elderly Assisted Living	28	Aegis Assisted Living Of Laguna Niguel, Anaheim Guest Home, Atria Golden Creek, Atria Newport Beach, Atria Newport Plaza, Brookdale Valley View, Carmel Village Retirement Community, Freedom Village, Fullerton Villa, Garden Grove Guest Home, Heritage Pointe, Kirkwood Orange, La Vida At Mission Viejo, Oakmont Of Huntington Beach, Palm Retirement Center, Park Regency Retirement Center, Seaside Terrace Retirement Community, Silverado Brea Llc, Silverado Senior Living - Newport Mesa, Silverado Senior Living - San Juan Capistrano, Steadfast (Chopin), Steadfast (Western), Sunflower Gardens, Sunrise Assisted Living Of Fullerton, Sunrise Haven, Sunrise Of Mission Viejo, Vivante On The Coast, Woodbridge Terrace Of Irvine

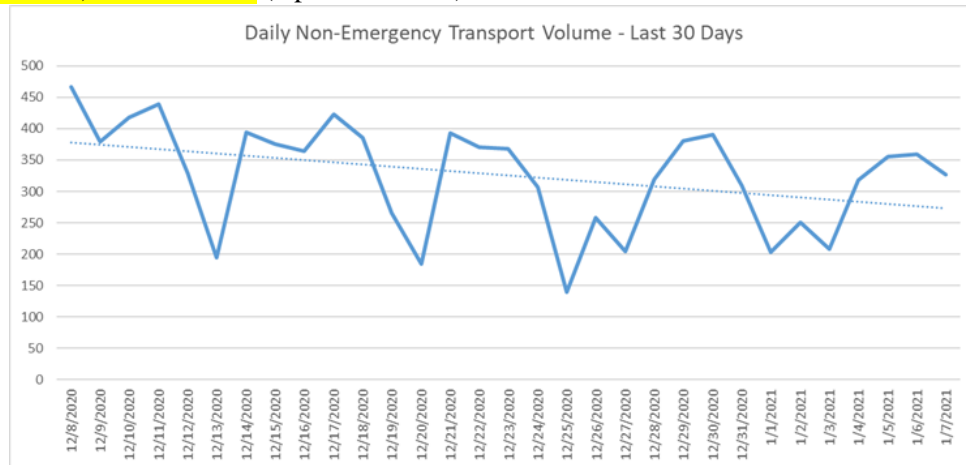
## EMERGENCY MEDICAL SERVICES STATUS

\*Data Source: Orange County Medical Emergency Data System (OC-MEDS)

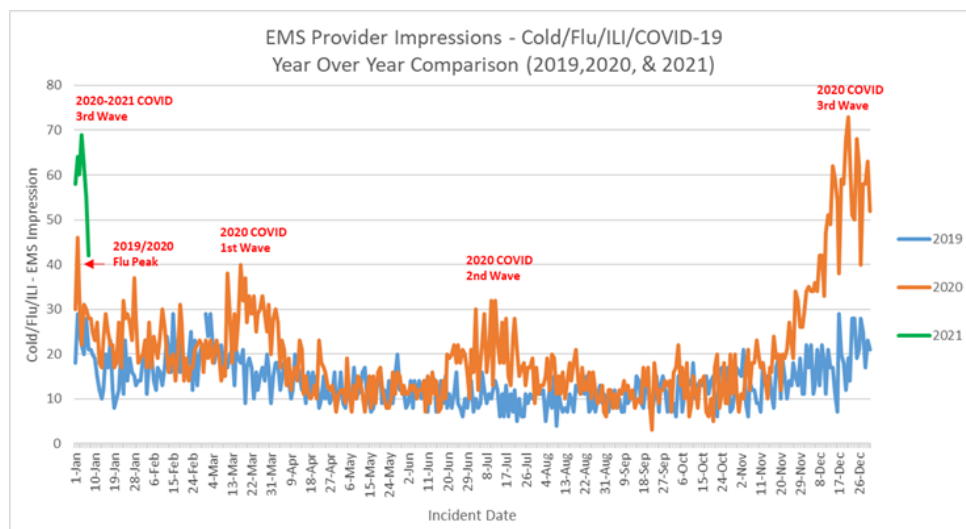
9-1-1 ambulance transport volume has remained stable over the last 30 days. Volume is approaching normal (pre-COVID) levels (Updated 1/8/21).



Non-emergency ambulance transports have continued far lower than normal. Transport volume is averaging about 30-35% below normal (pre-COVID) levels overall (Updated 1/8/21).



Primary Impressions of Cold/Flu/ILI by 9-1-1 EMS providers has fluctuated up and down for the last few weeks, but remain about 10-15% of all 9-1-1 transports (Updated 1/8/21).

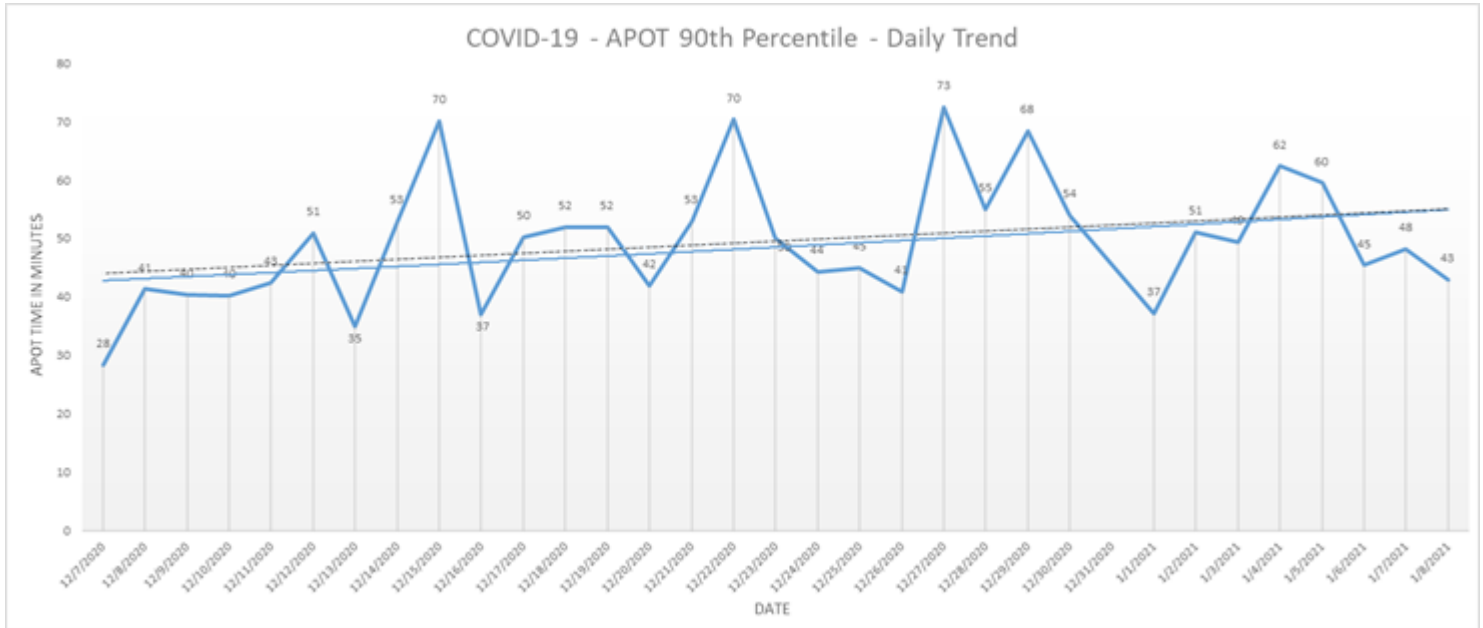


- Ambulance Patient Offload Time (APOT) is defined as the time the ambulance arrives at the receiving destination (wheels stop) to the time that the ambulance crew physically transfers the patient to the ED gurney. Last 24 hours: **Current Average APOT is: 19m44s / Current 90th Percentile APOT is: 43m03s**

The chart below displays a daily trend over the last 30 days.

- Fourteen (14) ERCs had APOT times greater than thirty (30) minutes.
- Four (4) ERCs had APOT times greater than sixty (60) minutes.

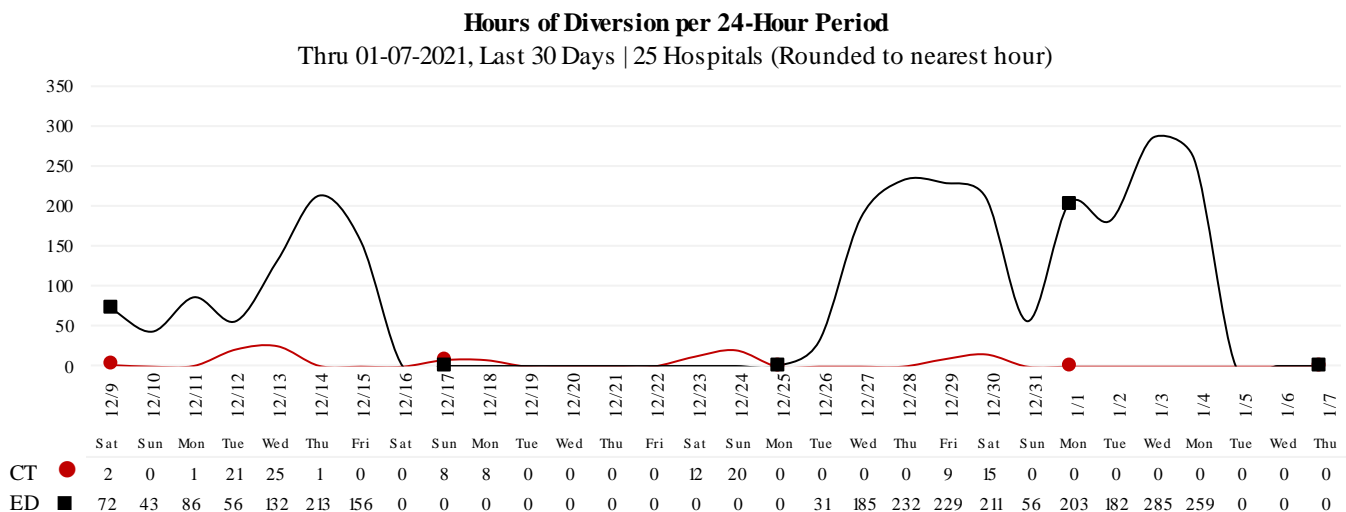
*Note: a handful of ERCs were close to the 30 minute threshold, but were not over it.*



\*Data Source: Orange County Medical Emergency Data System (OC-MEDS)

- Emergency Department (ED) Diversion & Computerized Tomography (CT) (ED closed to all ambulance transport due to no ED capacity or no CT available) for the last 30 days 12/9/20 – 1/7/21 below.
- NOTE: Suspension of Hospital Diversion was reinstated, 1/4/21, @ 1900.**

\*Data Source: ReddiNet



1/8/21

**26):** Anaheim Regional, Anaheim Global, Chapman Global, CHOC, CHOC at Mission, Foothill, Fountain Valley, Garden Grove, Hoag-Irvine, Hoag-Newport Beach, Huntington Beach, Kaiser-Anaheim, Kaiser-Irvine, La Palma, Los Alamitos, Mission-Laguna Beach, Mission-Mission Viejo, Orange Coast Memorial, Orange County Global, Placentia Linda, Saddleback Memorial, Saint Jude, South Coast Global, St. Josephs, UCI, West Anaheim

\*Data Source: California Department of Public Health (CDPH) – Snowflake server

Current Snowflake Data Dictionary may be found at:

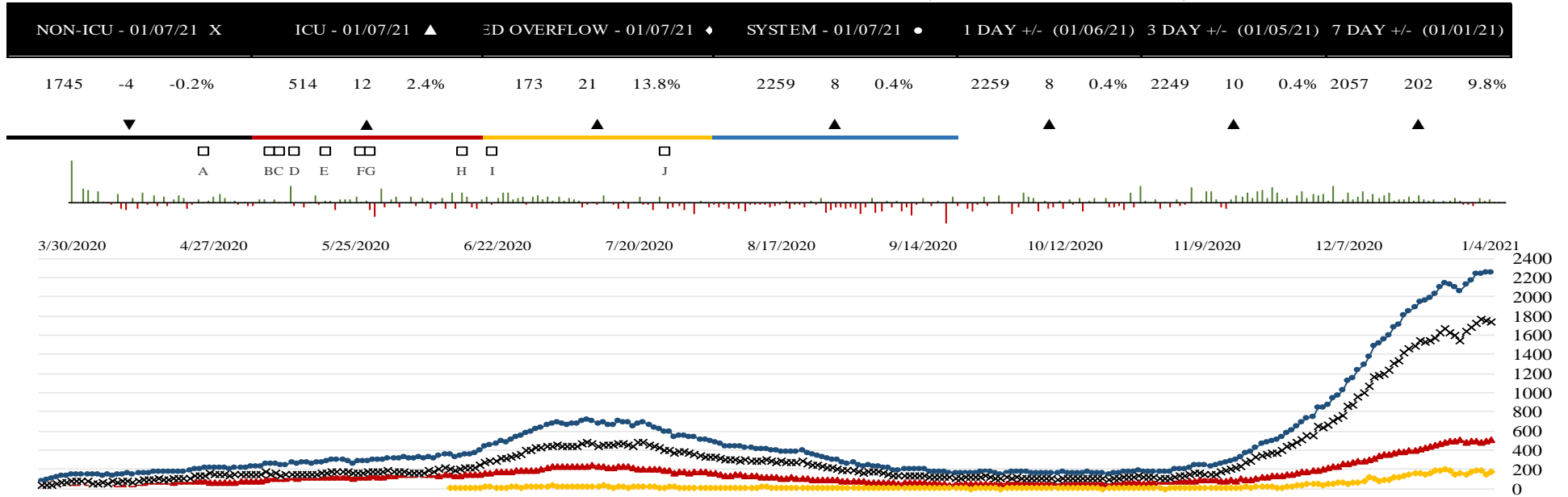
[https://www.calhospital.org/sites/main/files/file-attachments/data\\_dictionary\\_cha\\_covid\\_tracker\\_4-17-20.pdf](https://www.calhospital.org/sites/main/files/file-attachments/data_dictionary_cha_covid_tracker_4-17-20.pdf)

ALL HOSPITALS (33)															
DATE	Census ALL	Occupancy % *****	COVID+ Hospitalized	COVID+ ICU	ICU Occupied Adult	ICU Available Adult	% ICU Beds Adult Available	ICU Occupied Peds	ICU Available Peds	% ICU Beds Peds Available	ICU CDPH OC Occupied **	ICU CDPH OC Available ***	% ICU CDPH OC Available ****	% ICU Beds System Available *****	% Ventilators Available
12/21	4193	76%	1806	390	622	56	8%	28	40	59%	746	96	13%	24%	45%
12/22	4209	76%	1854	394	600	59	9%	25	43	63%	727	102	14%	25%	44%
12/23	4219	76%	1893	405	589	57	9%	24	44	65%	714	101	14%	25%	44%
12/24	4202	76%	1955	417	607	50	8%	24	44	65%	725	94	13%	24%	44%
12/25	4098	75%	1957	432	611	45	7%	20	48	71%	724	93	13%	24%	45%
12/26	4026	75%	1990	443	591	54	8%	23	45	66%	713	99	14%	25%	45%
12/27	4181	77%	2031	453	609	46	7%	22	46	68%	723	92	13%	24%	42%
12/28	4167	76%	2106	473	578	64	10%	25	43	63%	710	107	15%	26%	42%
12/29	4296	77%	2145	479	609	46	7%	44	24	35%	723	70	10%	22%	40%
12/30	4301	78%	2128	495	628	47	7%	31	37	54%	743	84	11%	22%	40%
12/31	4272	77%	2097	501	624	58	9%	30	38	56%	750	96	13%	22%	39%
1/1	4181	75%	2057	506	623	52	8%	34	34	50%	743	86	12%	22%	37%
1/2	4161	75%	2136	487	605	48	7%	33	35	51%	721	83	12%	22%	35%
1/3	4241	76%	2178	500	628	46	7%	30	38	56%	742	84	11%	22%	33%
1/4	4223	76%	2236	504	625	40	6%	20	48	71%	733	88	12%	22%	31%
1/5	4320	77%	2249	485	635	47	7%	30	38	56%	750	85	11%	21%	32%
1/6	4354	78%	2251	502	630	41	6%	29	39	57%	739	80	11%	21%	33%
1/7	4394	78%	2259	514	638	34	5%	27	41	60%	740	75	10%	21%	34%

\*\*ICU CDPH OC Occupied – CDPH combines occupied ICU adult beds and occupied ICU pediatric beds as a reporting metric on their COVID-19 Hospital dashboard. \*\*\*ICU CDPH OC Available – CDPH subtracts the sum of occupied ICU adult beds and occupied ICU pediatric beds, from the sum of ICU total adult beds and ICU total pediatric beds to determine ICU available beds on their COVID-19 Hospital dashboard. \*\*\*\*% ICU CDPH OC Available – The sum of occupied ICU adult beds and occupied ICU pediatric beds, divided by the sum of ICU total adult beds and ICU total pediatric beds, as a percentage. \*\*\*\*\* ICU Beds System Available – All ICU beds reported as available in Orange County, which includes Adult, PICU, and NICU, and any other ICU bed types. \*\*\*\*\* Occupancy % - Census all, divided by system beds total, excluding surge capacity.

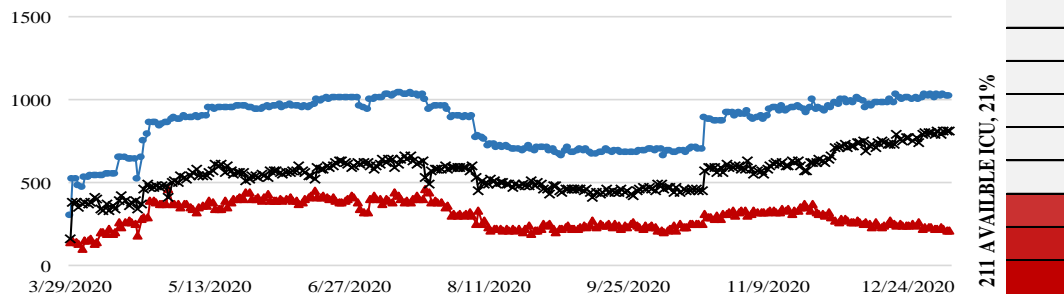
1/8/21

**COVID 19 ORANGE COUNTY HOSPITAL SYSTEM DATA (CA SNOWFLAKE SERVER)**

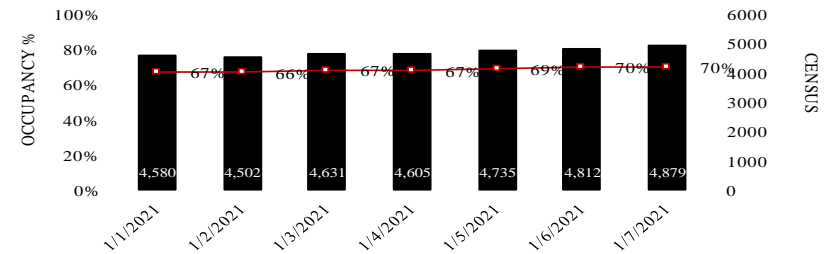


A. Face Covers Mandatory, B. Cinco de Mayo, C. OC Beaches Open, D. Mom's Day, E. OC Parks Parking Open, F. OC Stage 2 Approved, G. Memorial Day, H. Re-open entertainment, etc., I. CA Gov. Mask Mandate, J. Changes to data collection, Federal

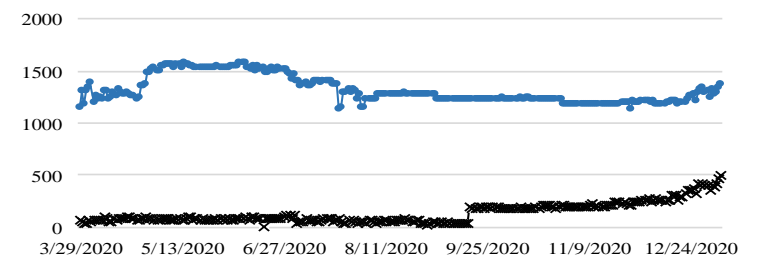
ICU CENSUS - (01/07/21) | ● SYSTEM- 1022 | ▲ AVAILABLE- 211 (21%) | X OCCUPIED- 811



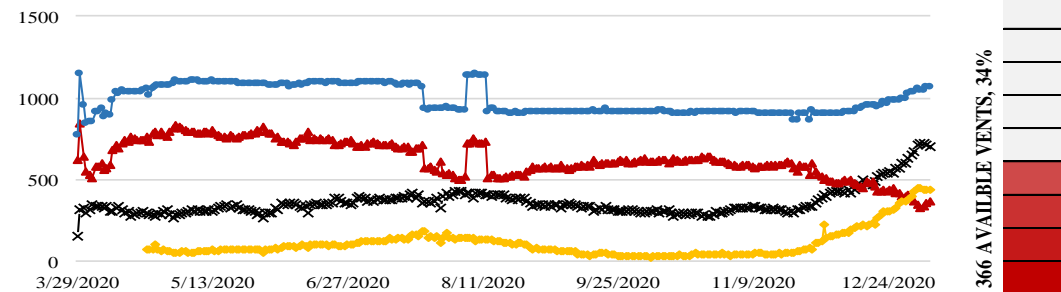
7-DAY HISTORY BED OCCUPANCY - (01/07/21) | IN-PATIENT BEDS- 4879 (70%)



SURGE CENSUS - (01/07/21) | X OCCUPIED- 485 | ● SYSTEM- 1368

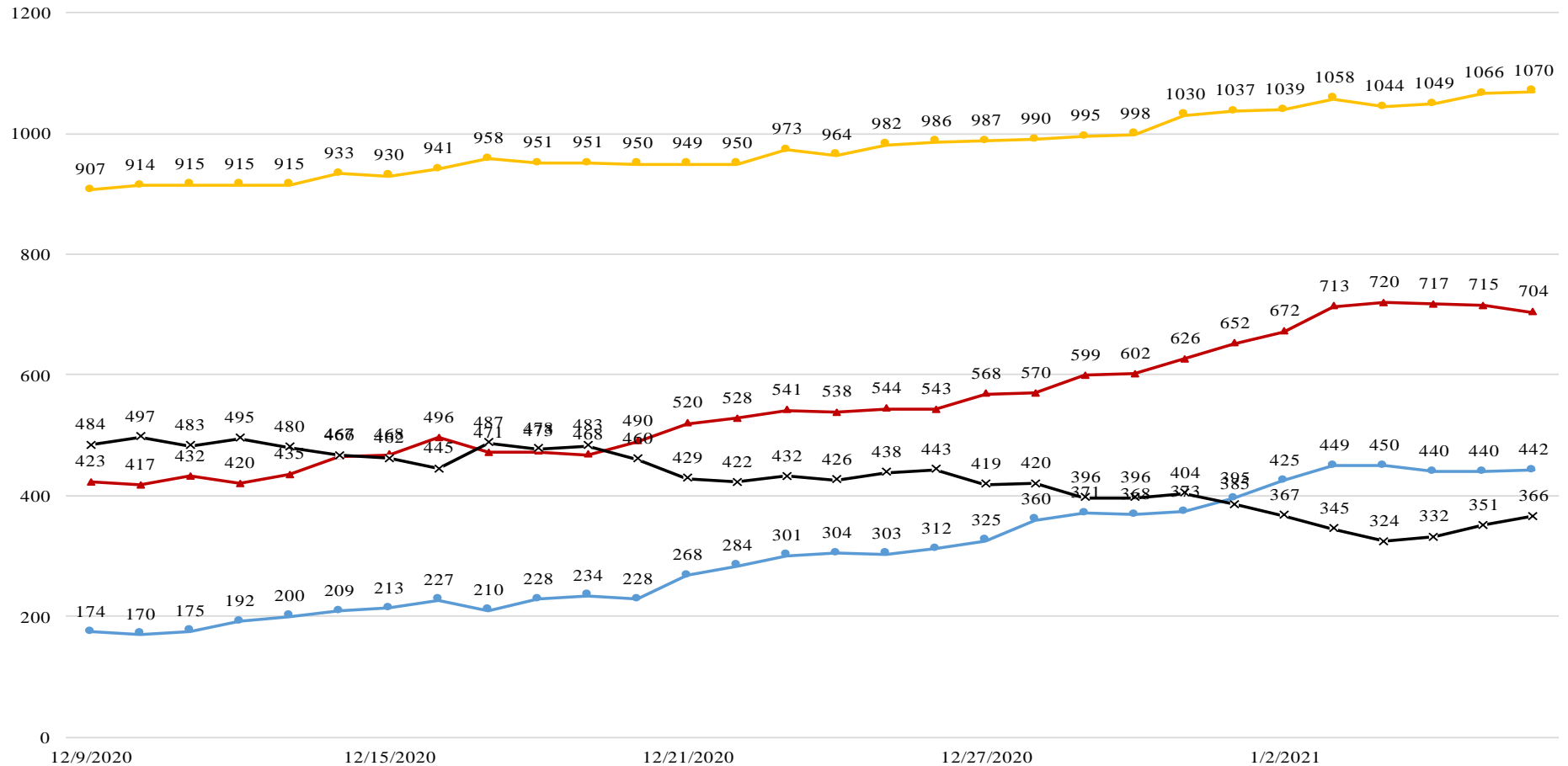


VENTILATORS - (01/07/21) | ● SYSTEM- 1070 | ▲ AVAILABLE- 366 (34%) | X OCCUPIED- 704 | ◆ COVID



1/8/21

**COVID 19 ORANGE COUNTY HOSPITAL SYSTEM DATA (CA SNOWFLAKE SERVER)**  
**VENTILATORS IN USE (12/09/20 - 01/07/21) | 33 ACUTE CARE FACILITIES REPORTING**



DATE	12/9	12/10	12/11	12/12	12/13	12/14	12/15	12/16	12/17	12/18	12/19	12/20	12/21	12/22	12/23	12/24	12/25	12/26	12/27	12/28	12/29	12/30	12/31	1/1	1/2	1/3	1/4	1/5	1/6	1/7
COVID+ ●	174	170	175	192	200	209	213	227	210	228	234	228	268	284	301	304	303	312	325	360	371	368	373	395	425	449	450	440	440	442
SYSTEM OCC ▲	423	417	432	420	435	466	468	496	471	473	468	490	520	528	541	538	544	543	568	570	599	602	626	652	672	713	720	717	715	704
SYSTEM AVL ✕	484	497	483	495	480	467	462	445	487	478	483	460	429	422	432	426	438	443	419	420	396	396	404	385	367	345	324	332	351	366
SYSTEM TTL ◆	907	914	915	915	915	933	930	941	958	951	951	950	949	950	973	964	982	986	987	990	995	998	1030	1037	1039	1058	1044	1049	1066	1070

COVID+ = CONFIRMED AND SUSPECTED PATIENTS ON A VENTILATOR

\*OCC = VENTILATORS IN USE, INCLUDING COVID+ PATIENTS AND OTHER VENT PATIENTS

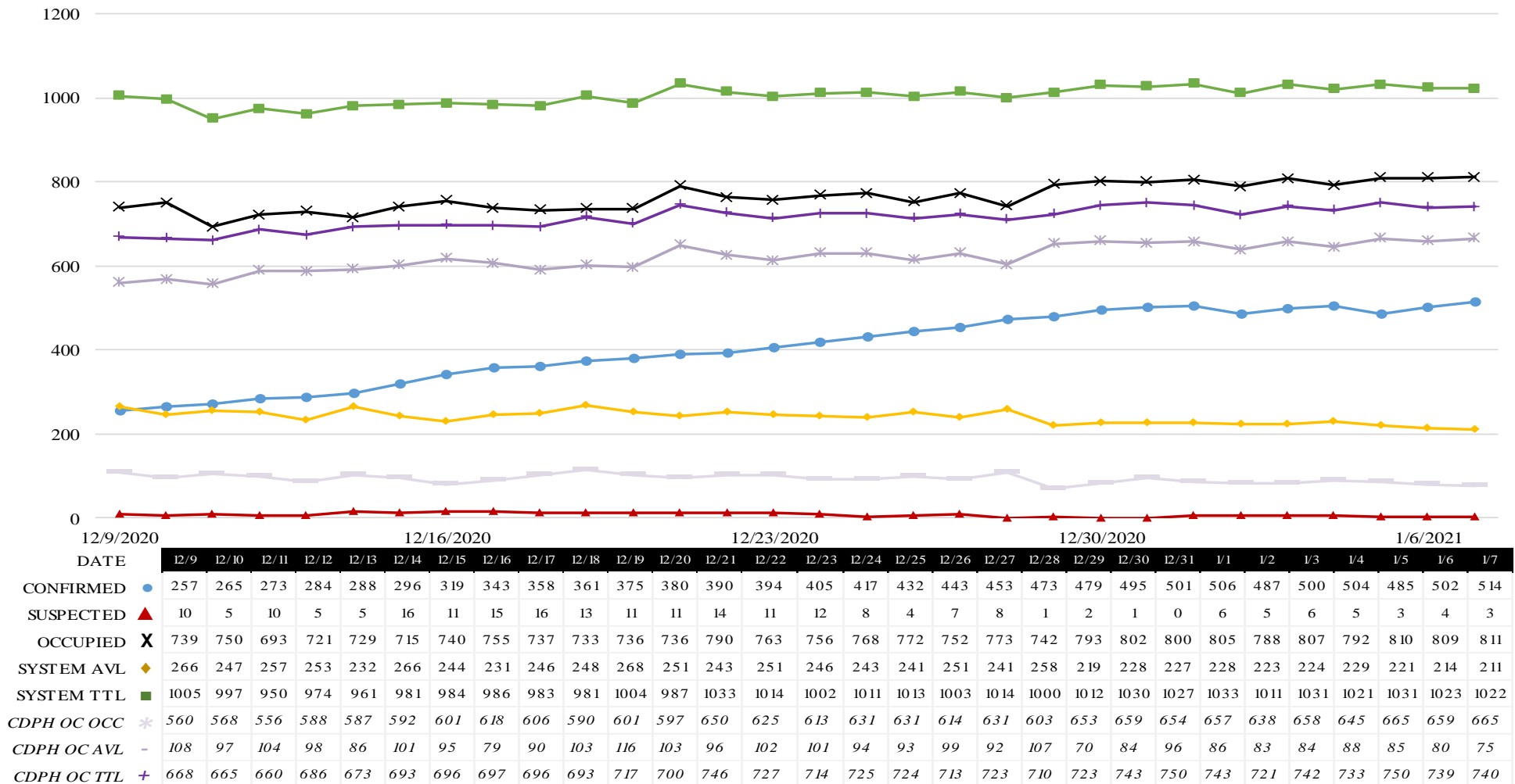
\*\*AVL = AVAILABLE VENTILATORS IN SYSTEM

\*\*\*TTL = TOTAL VENTILATORS IN SYSTEM



1/8/21

**COVID 19 ORANGE COUNTY HOSPITAL SYSTEM DATA (CA SNOWFLAKE SERVER)**  
**ICU BEDS (12/09/20 - 01/07/21) | 33 ACUTE CARE FACILITIES REPORTING**



\*AVL = AVAILABLE NON SURGE ICU BEDS. PRIOR TO 7/22 DEFINITION DID NOT EXCLUDE NONSURGE.

\*\*TTL = TOTAL NON SURGE ICU BEDS. PRIOR TO 7/22 DEFINITION DID NOT EXCLUDE NONSURGE.

\*\*\* AS OF 10/20/2020 SPIKE IN SYSTEM TTL, OCCUPIED AND AVAILABLE DUE TO CHANGE IN CHOC ORANGE REPORTED VALUES.

\*\*\*\* CDPH OC OCC = Adult ICU Occupied + Pediatric ICU Occupied

\*\*\*\*\* CDPH OC AVL = (Adult ICU Total Beds + Pediatric ICU Total Beds) - (Adult ICU Occupied + Pediatric ICU Occupied)

\*\*\*\*\* CDPH OC TTL = Adult ICU Total + Pediatric ICU Total



\*Data Source: California Department of Public Health (CDPH) – Snowflake server

\*\*Current Snowflake Data Dictionary may be found at:

[https://www.calhospital.org/sites/main/files/file-attachments/data\\_dictionary\\_cha\\_covid\\_tracker\\_4-17-20.pdf](https://www.calhospital.org/sites/main/files/file-attachments/data_dictionary_cha_covid_tracker_4-17-20.pdf)

**Acute Care Hospital PPE / Ventilator Supplies Days on Hand – (29/33 ACHs reported)**

Reporting Date: 1/7/21*	30 days +	15-30 days	7-14 days	4-6 days	0-3 days	Not Reported
Ventilator Supplies**	6	6	15	2	0	4
N95 Masks**	19	6	3	1	0	4
Surgical Masks**	21	7	1	0	0	4
Face Shields**	19	3	2	4	1	4
Gloves**	13	6	6	2	2	4
Gowns**	11	13	3	2	0	4

\*Data Source: ReddiNet

**Reported Service Category Status (23/25 ACHs w/EDs reported)**

Reporting Date: 1/8/21	Count	% of Total
Command Center Activated	22	88%
Surge Plan Activated	21	84%
Canceled Procedures/Services	25**	100%
Supply Issues	8	32%
CDPH Flex	18	72%
Increased Morgue Capacity	20	80%

\*\*[California Public Health Officer Order regarding Crisis Care Strategies issued on January 5, 2021.](#)

**Hospital Criteria for shifting to Crisis Care Strategies**

**LEGEND**

CRITERIA	STATUS		
	Normal Operations	Modified Operations	Modified Operations Assistance Needed
Rate of change in Hospitalized COVID-19 patients (doubling time over last 7 days)	Never to 4 weeks to double	4 weeks to 2 weeks to double	Less than 2 weeks to double
Absolute COVID-19 Census in the hospitals across Orange County	Less than 750	750-1500	>1500
Hospital census as a percentage of staffed capacity	<80%	80% to 90%	>90%
Hospital ICU census as a percentage of staffed ICU capacity	<70%	70% to 85%	>85%

**Hospital Criteria for shifting to Crisis Care Strategies**

**1/7/21**

CRITERIA	STATUS		
	Normal Operations	Modified Operations Under Control	Modified Operations Assistance Needed
Rate of change in Hospitalized COVID-19 patients (doubling time over last 7 days)	13.9		
Absolute COVID-19 Census in the hospitals across Orange County			2259
Hospital census as a percentage of staffed capacity	78%		
Hospital ICU census as a percentage of staffed ICU capacity			91%

### AGENCY OPERATIONS CENTER / LOGISTICS SECTION

- The AOC is activated M-F 0900-1600 at Level I; Warehouse Ops are M-F - 0900-1600.
- SCARCE Resources: Gloves, Wipes, Syringes, Needles

#### Total Activity – Updated 1/7/21 at 1530

INQUIRIES	RR RECEIVED	RR FILLED
17,159 +80	9,874 +46	7,970 +55
Total Denied Requests: 810 / Total Redacted Requests: 864		

#### Logistics Daily Units Distributed 1-7-21

N95 Mask	2,100
Surgical Mask	500
Gown	1,500
Gloves	37,500
Face Shields/Eye Protection	800
Hand Sanitizer	260
Other	3,320
<b>Total Units</b>	<b>45,980</b>

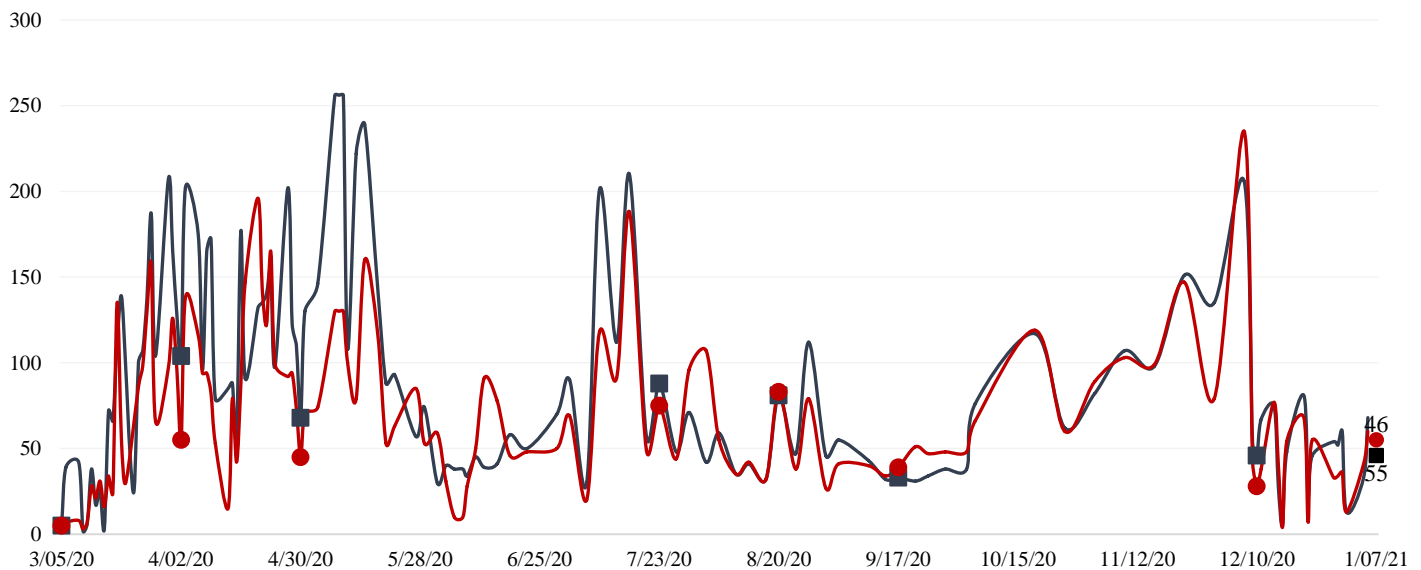
#### Inventory Report February 18 to January 07, 2021

##### Medical Supply/Equipment Total Units Distributed

N95 Mask	5,021,715
Surgical Mask	1,980,705
Gowns	2,089,111
PPE-Suit	17,965
Gloves	5,049,550
Eye Protection	392,519
Hand Sanitizer	312,213
Other Items	2,023,240
<b>Total Units</b>	<b>16,887,018</b>

#### Resource Requests - Updated 1/7/21 at 1530

Received ■ Filled ●



### ALTERNATE CARE SITE (ACS)

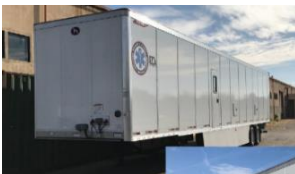
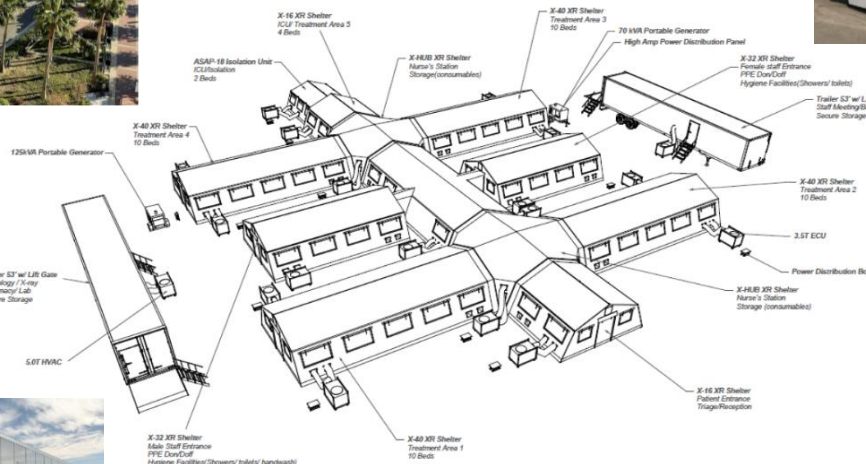
- Fairview Alternate Care Site (FACS) opened for admissions on **TUESDAY, 12/15/20 @ 1800**
- FACS Admissions Guidelines (updated 12.16.20) may be found on the OCEMS website at:  
<https://www.healthdisasteroc.org/civicax/filebank/blobdload.aspx?BlobID=118724>

Fairview (COVID-19 +)		
Patient Census (as of 1/8/2021 09:00)	CURRENT	TOTAL
Orange County	15	49
LA County	7	34
Riverside	1	3
San Bernadino County	1	2
Ventura County	0	0
Total patients CENSUS / TOTAL ACCEPTED	24	88
Patients Discharged		TOTAL
DISCHARGED		64
Memory Care Unit (MCU) Census (as of 1/5/2021 17:00)		
MCU Patient Census	4	7
Patients Discharged from MCU		TOTAL
MCU - DISCHARGED		3

### MOBILE FIELD HOSPITALS

- MFHs are capable of expanding current hospital capacity by adding additional patient beds.
- They are large heavy duty canvas tents with hard flooring and temperature controlled units.
- They can be configured in a myriad of footprints and sizes (i.e. 25-200 bed).
- CDPH is primed and ready to provide hospitals a waiver to allow emergency use of this MFH facility.
- OCEMS is actively deploying multiple MFHs to OC hospitals prepared to receive & operate
  - OCEMS has a total of 8 trailers to support at minimum, 200 patient beds.
  - Hospitals who have self-identified in receiving a MFH include:

- UCI (50 bed) – confirmed
- Fountain Valley (25 bed) – confirmed
- Los Alamitos (25 bed) – confirmed
- Saint Jude (50 bed) – confirmed





## MOBILE FIELD HOSPITALS

