

**OVERVIEW OF CURRENT SITUATION (9/16/21 0621)** Source: Johns Hopkins University & Medicine <https://coronavirus.jhu.edu/map.html>

Cases / Deaths  
 Worldwide: 226,483,144 / 4,662,058  
 Nationwide: 41,539,105 / 666,627  
 California: 4,506,148 / 67,482  
 Orange Co: 292,450 / 5,337 Source: [Orange County COVID-19 Case Counts & Testing Figures](#)

**ORANGE COUNTY PUBLIC HEALTH (as of 9/16/21 1011)**

**Orange County COVID-19 Summary\* [click for full details](#)**

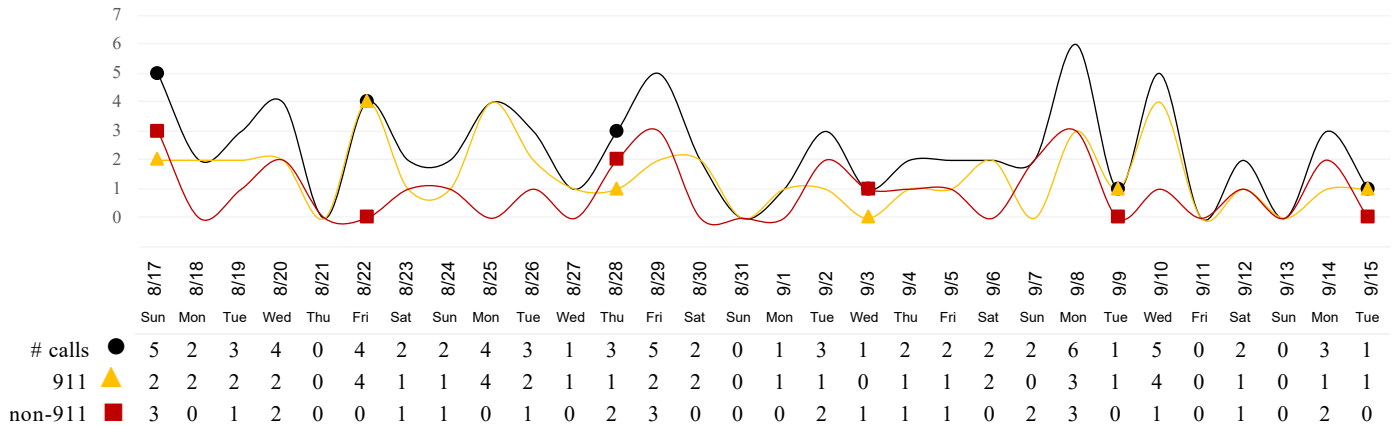
	Fri 9/10/21	Sat 9/11/21	Sun 9/12/21	Mon 9/13/21	Tue 9/14/21	Wed 9/15/21	Thu 9/16/21
Cases Reported to Date	289,789	XX**	XX**	289,381	291,772	292,124	292,450
Deaths Reported to Date	5,299	XX**	XX**	5,309	5,316	5,326	5,337
Tests Reported Today	28,136	XX**	XX**	41,269	10,712	11,797	15,291
Cumulative Tests to Date	4,803,164	XX**	XX**	4,844,433	4,855,145	4,866,942	4,882,233

\*Data posted is always preliminary & subject to change. More information may become available as individual case investigations are completed. **LOCAL DATA MAY BE DIFFERENT FROM THE STATE WEBSITE DATA.** \*\* Weekend/holiday values reported on Monday.

**SKILLED NURSING/ASSISTED LIVING/RESIDENTIAL CARE FACILITY – TRENDS**

\*Data Source: Orange County Medical Emergency Data System (OC-MEDS) – Updated 9/15/21

**Calls to SNFs/Congregate Living with Primary Impressions: Fever/Cough, Influenza-like Illnesses**  
(Transports to ERCs Only - Last 30 Days)



\*Data Source: California Department of Public Health (CDPH)

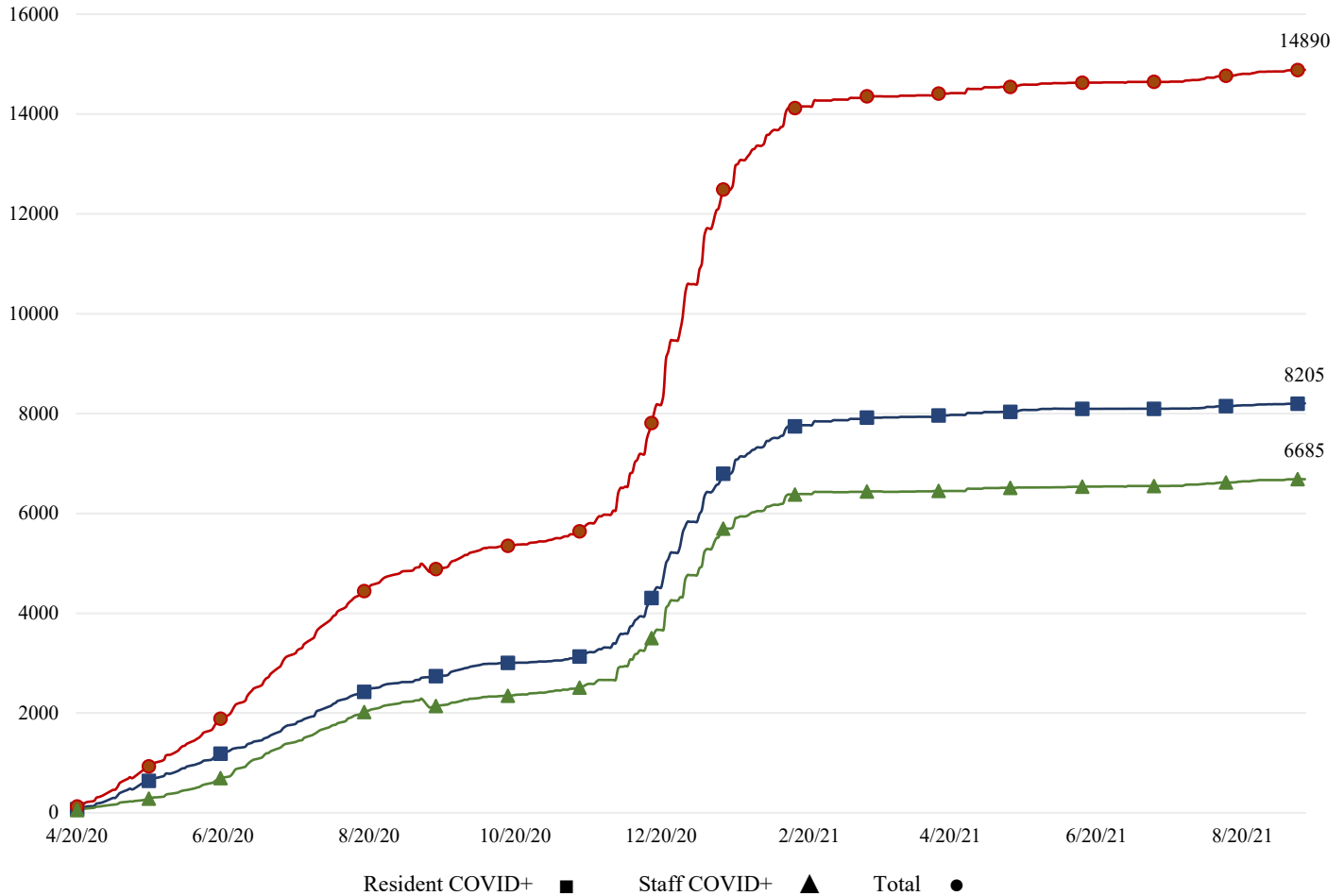
**Skilled Nursing/Assisted Living/Residential Care Facility PPE / Ventilator Supplies Days on Hand**  
(67/73 SNFs reported)

Reporting Date: 9/15/2021	0 - 3 days	4 - 7 days	8-14 days	15+ days
N95 Masks	0	2	6	59
Surgical Masks	0	2	5	60
Eye Protection	0	2	5	60
Gowns	0	2	4	61
Gloves	0	2	6	59
Alcohol-Based Hand Sanitizer	0	1	6	60

\*Data Source: Orange County Health Care Agency – Public Health – 9/16/21

\*\*NOTE\*\*: Decrease in the COVID + in staff seen on graph is due to data being cleaned and removing duplicates of those that work in multiple OC facilities or are contract staff and care for residents at multiple facilities.

COVID+ in Congregate Healthcare\*



\*Data Source: Orange County Health Care Agency – Public Health

**Current Facility Outbreaks (as of 9/16/21 1011)**

An “Outbreak” is two (2) or more confirmed cases of COVID-19 in facility occurring within 14 days.

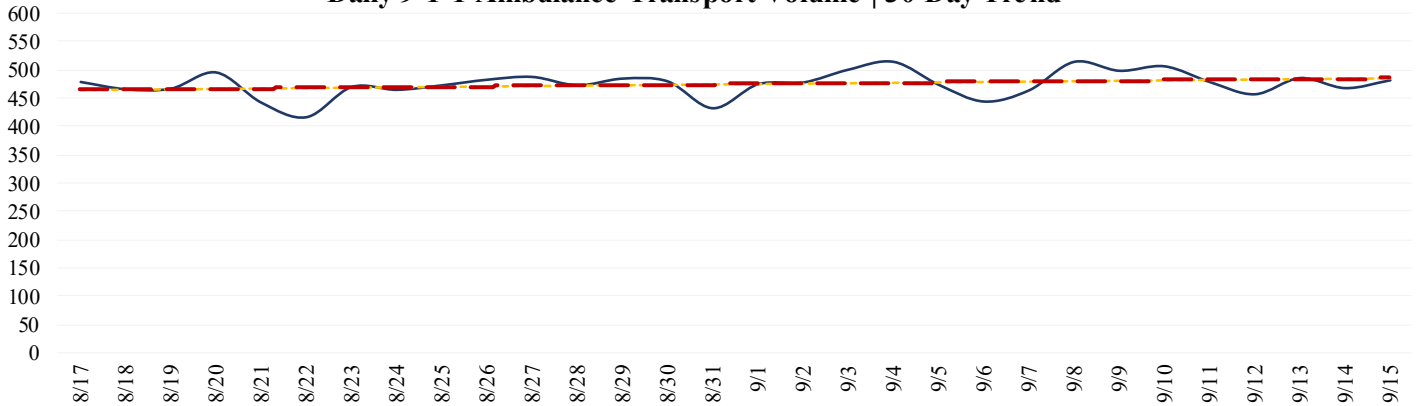
Facility Type by Licensing Category, Count		Facility Name Alphabetical
Skilled Nursing Facility	1	Mission Capistrano Healthcare Center
Elderly Assisted Living	2	Belmont Village Aliso Viejo, Brookdale Anaheim

**EMERGENCY MEDICAL SERVICES STATUS**

\*Data Source: Orange County Medical Emergency Data System (OC-MEDS)

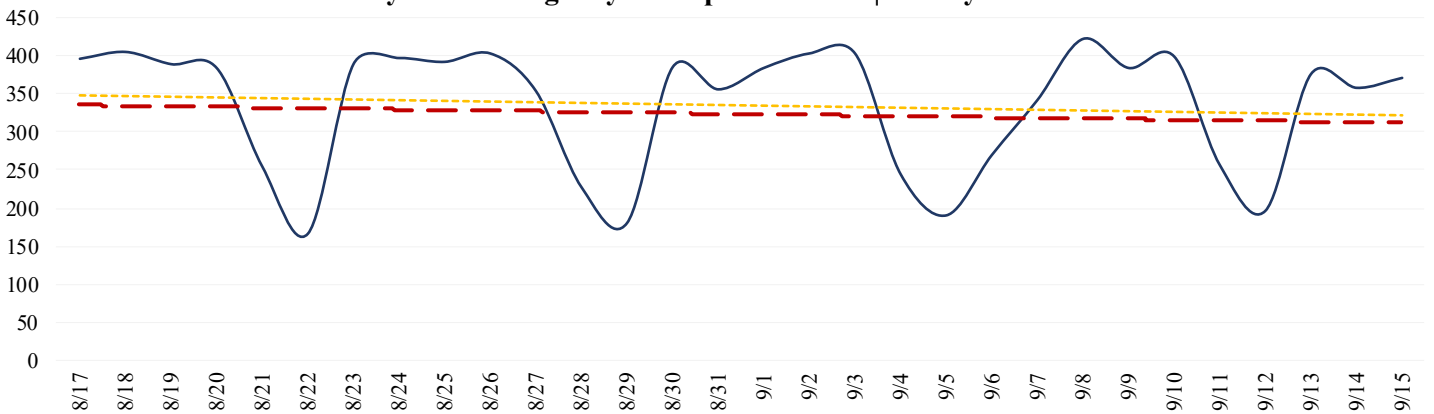
9-1-1 Ambulance Transports have been **trending higher with several days > 500 transports** (Updated 9/16/21).

**Daily 9-1-1 Ambulance Transport Volume | 30 Day Trend**



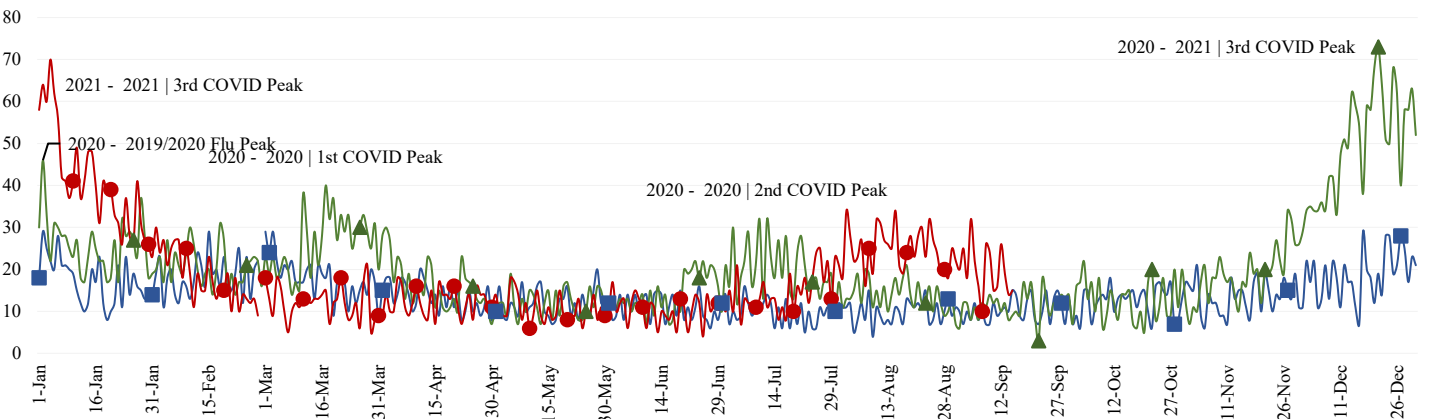
Non-emergency Ambulance Transports have been **trending somewhat lower** (Updated 9/16/21).

**Daily Non-Emergency Transport Volume | 30 Day Trend**



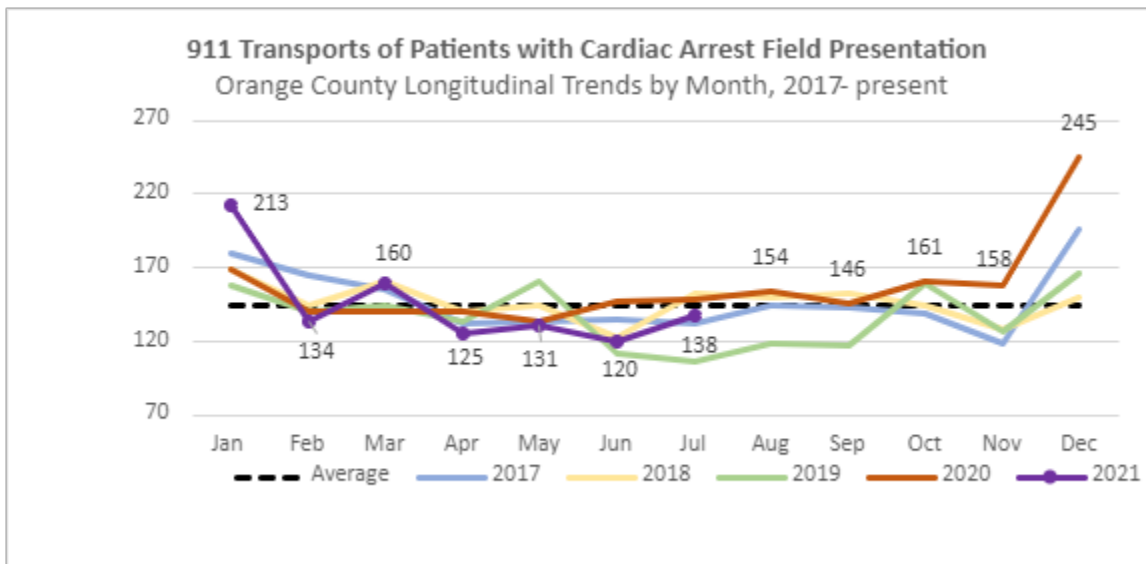
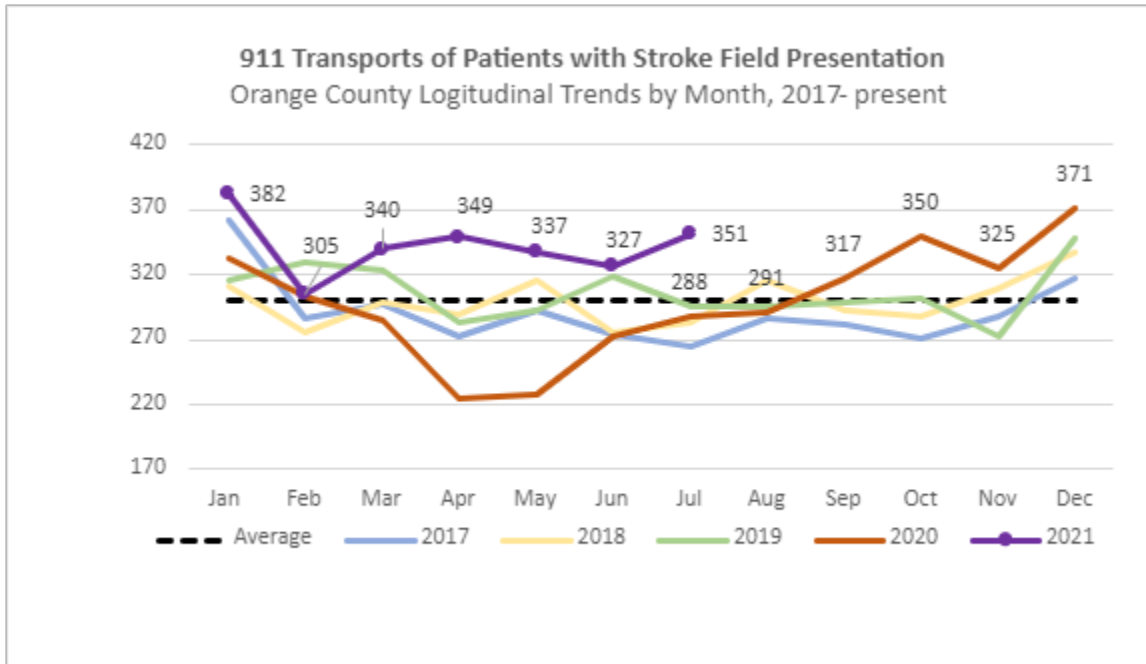
9-1-1 Transports of patients with Cold/Flu/ILI/COVID primary impressions **continue to trend lower and are approaching baseline levels on some days.** (Updated 9/16/21).

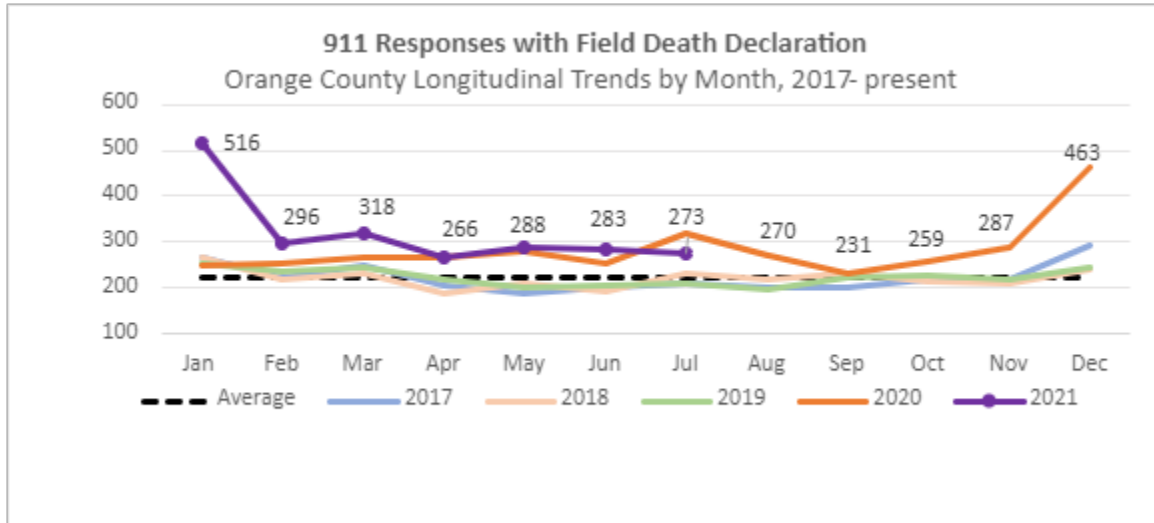
**EMS Provider Impressions - Cold/Flu/ILI/COVID-19 Year Over Year Comparison (2019 ■, 2020 ▲, & 2021 ●)**



**911 EMS SYSTEM MONITORING**

\*Data Source: Orange County Medical Emergency Data System (OC-MEDS)





**Summary Data Table for Chart, “911 Responses with Field Death Declaration”**

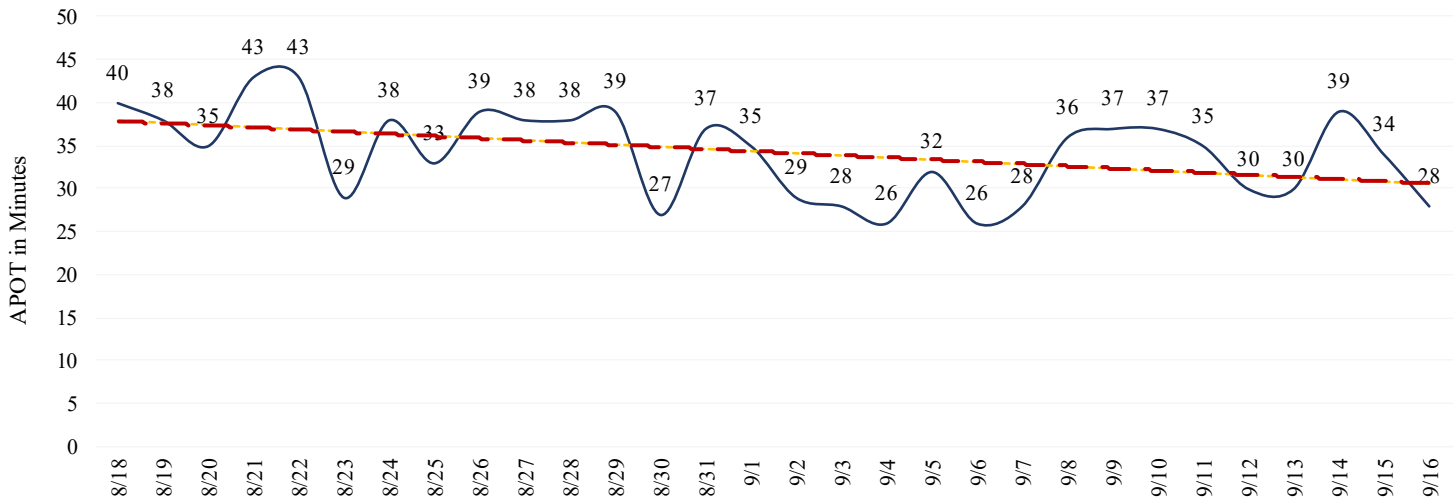
	2017	2018	2019	2020	2021
January	268	267	254	250	516
February	224	216	235	254	296
March	248	233	245	265	318
April	206	186	220	265	266
May	186	210	202	281	288
June	201	190	205	254	283
July	211	233	208	320	273
August	201	218	195	270	
September	199	233	222	231	
October	217	213	227	259	
November	217	211	217	287	
December	294	242	246	463	
<b>Total</b>	<b>2378</b>	<b>2410</b>	<b>2430</b>	<b>3399</b>	

- Ambulance Patient Offload Time (APOT) is defined as the time the ambulance arrives at the receiving destination (wheels stop) to the time that the ambulance crew physically transfers the patient to the ED gurney. Last 24 hours: **Countywide - 28m00s since the report creation time (09/16/21 @ 0535). Countywide APOT time have been higher recently with several days > 30 minutes.**
- Eight (8) ERCs had APOT times greater than thirty (30) minutes.
- Three (3) ERCs had APOT times greater than sixty (60) minutes.

The chart below displays a daily trend over the last 30 days.

\*Data Source: Orange County Medical Emergency Data System (OC-MEDS) – Updated 9/16/21

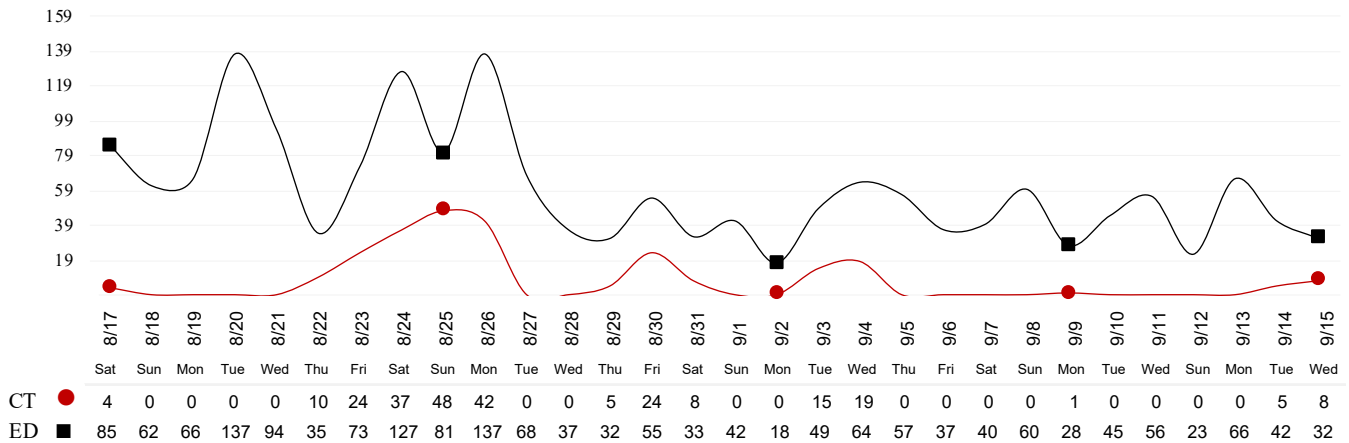
COVID 19 - APOT 90th percentile | Daily Trend



- **Emergency Department (ED) Diversion & Computerized Tomography (CT) (ED closed to all ambulance transport due to no ED capacity or no CT available) for the last 30 days.**

\*Data Source: Orange County Medical Emergency Data System (OC-MEDS) – Updated 9/15/21

Hours of Diversion per 24-Hour Period  
 (25 Hospitals, rounded to nearest hour - Last 30 Days)



**26):** Anaheim Regional, Anaheim Global, Chapman Global, CHOC, CHOC at Mission, Foothill, Fountain Valley, Garden Grove, Hoag-Irvine, Hoag-Newport Beach, Huntington Beach, Kaiser-Anaheim, Kaiser-Irvine, La Palma, Los Alamitos, Mission –Laguna Beach, Mission-Mission Viejo, Orange Coast Memorial, Orange County Global, Placentia Linda, Saddleback Memorial, Saint Jude, South Coast Global, St. Josephs, UCI, West Anaheim

\*Data Source: California Department of Public Health (CDPH) – Snowflake server

Current Snowflake Data Dictionary may be found at:

[https://www.calhospital.org/sites/main/files/file-attachments/data\\_dictionary\\_cha\\_covid\\_tracker\\_4-17-20.pdf](https://www.calhospital.org/sites/main/files/file-attachments/data_dictionary_cha_covid_tracker_4-17-20.pdf)

**33 HOSPITALS**

Date	Census All System	Occupancy % System	COVID+ Hospitalized System	COVID+ Hospitalized ICU Only (Adult & Peds)	% COVID+ hospitalized of ICU Occupied (Adult & Peds)	ICU Occupied (Adult & Peds)**	ICU Available (Adult & Peds)***	% ICU Available (Adult & Peds)****	ICU by Patient Age Group						% Ventilators Available
									Adult Occupied	Adult Available	Adult % Available	Pediatric Occupied	Pediatric Available	Pediatric % Available	
9/2	3979	73%	500	138	29%	469	152	24%	445	115	21%	24	37	61%	66%
9/3	3945	73%	483	128	28%	455	150	25%	428	116	21%	27	34	56%	67%
9/4	3829	72%	488	126	29%	435	154	26%	411	117	22%	24	37	61%	67%
9/5	3812	71%	478	128	29%	446	151	25%	419	117	22%	27	34	56%	65%
9/6	3776	70%	466	128	28%	454	147	24%	424	116	21%	30	31	51%	65%
9/7	3638	69%	446	135	30%	455	162	26%	426	130	23%	29	32	52%	64%
9/8	3822	72%	432	132	29%	457	158	26%	424	130	23%	33	28	46%	64%
9/9	3990	74%	426	130	28%	464	151	25%	427	127	23%	37	24	39%	64%
9/10	3881	72%	401	125	28%	453	157	26%	420	129	23%	33	28	46%	63%
9/11	3843	70%	416	126	28%	445	149	25%	405	128	24%	40	21	34%	62%
9/12	3793	70%	406	119	27%	438	161	27%	406	132	25%	32	29	48%	63%
9/13	3714	69%	372	105	24%	441	162	27%	408	134	25%	33	28	46%	65%
9/14	3764	70%	368	103	24%	437	167	28%	399	144	27%	38	23	38%	65%
9/15	3893	72%	371	102	23%	449	149	25%	413	124	23%	36	25	41%	64%

\*\*ICU occupied PREVIOUSLY ICU CDPH OC Occupied – CDPH combines occupied ICU adult beds and occupied ICU pediatric beds as a reporting metric on their COVID-19 Hospital dashboard. \*\*\*ICU Available PREVIOUSLY ICU CDPH OC Available – CDPH subtracts the sum of occupied ICU adult beds and occupied ICU pediatric beds, from the sum of ICU total adult beds and ICU total pediatric beds to determine ICU available beds on their COVID-19 Hospital dashboard. \*\*\*\*%ICU AVAILABLE PREVIOUSLY % ICU CDPH OC Available – The sum of occupied ICU adult beds and occupied ICU pediatric beds, divided by the sum of ICU total adult beds and ICU total pediatric beds, as a percentage. \*\*\*\*\*%COVID+ hospitalized of ICU Occupied PREVIOUSLY % ICU Beds System Available – All ICU beds reported as available in Orange County, which includes Adult, PICU, and NICU, and any other ICU bed types.

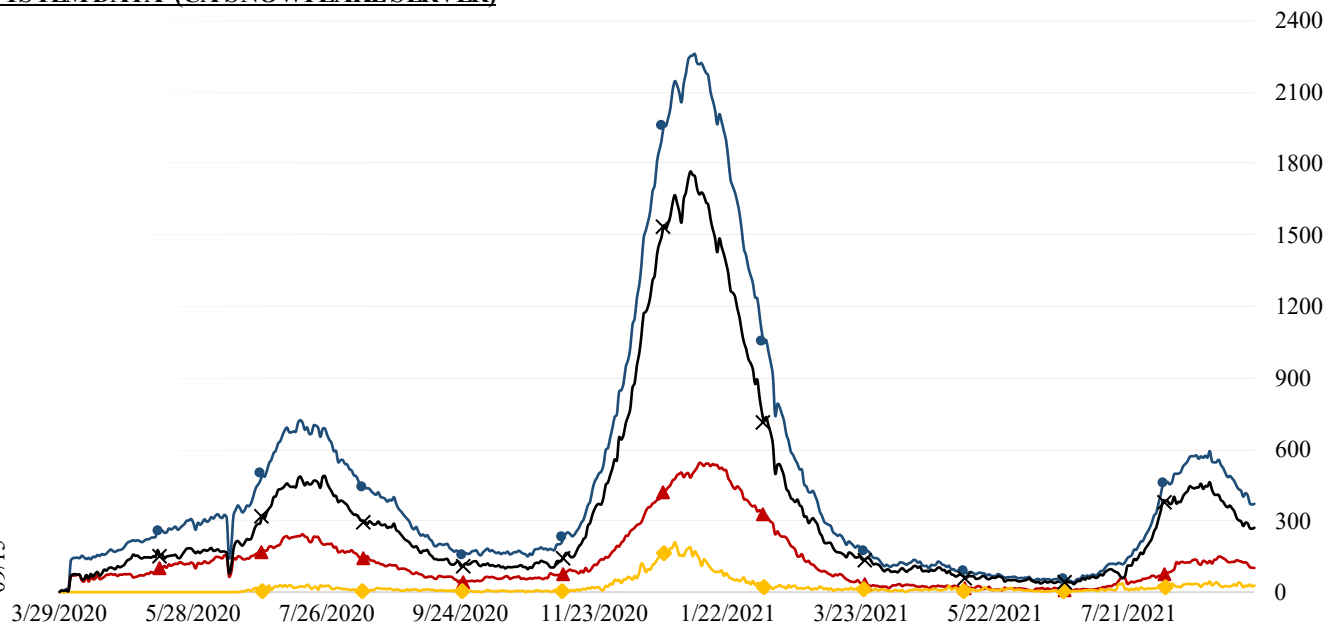
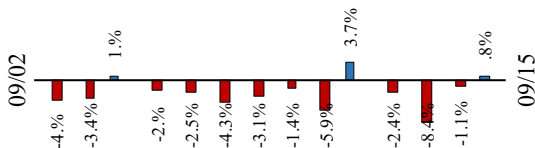
09/16/21

**COVID 19 ORANGE COUNTY HOSPITAL SYSTEM DATA (CA SNOWFLAKE SERVER)**

**COVID+ CENSUS by BED TYPE | 09/15/2021**

▲ ICU	102	-1	-1.0%	▼
◆ ED OVERFLOW	28	+4	16.7%	▲
X NON-ICU	269	+4	1.5%	▲
● SYSTEM	371	+3	0.8%	▲
3 Day   09-12-21	406	-35	-8.6%	
7 Day   09-08-21	432	-61	-14.1%	

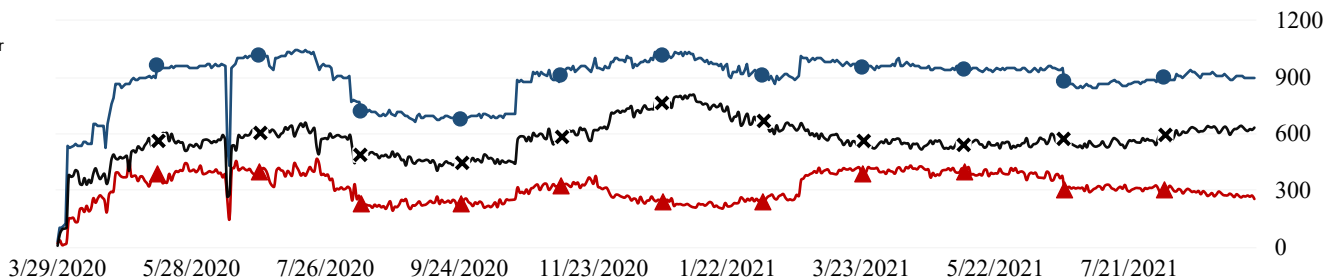
**14 Day System COVID+ Change**



**ICU SYSTEM CENSUS | (09/15/21)**

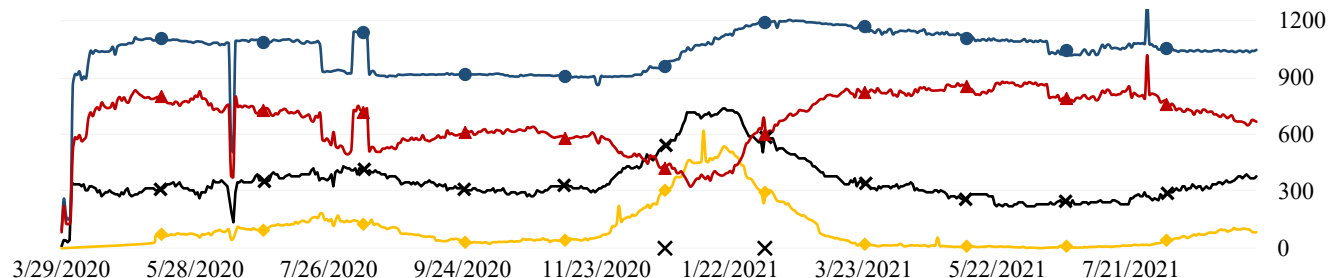
\*includes adult, PICU, NICU & other

● SYSTEM - 892	<div style="width: 100%; height: 10px; background-color: #0056b3;"></div>
▲ AVAILABLE - 255 (28.6%)	<div style="width: 28.6%; height: 10px; background-color: #c00000;"></div>
X OCCUPIED - 637 (71.4%)	<div style="width: 71.4%; height: 10px; background-color: #808080;"></div>



**VENTILATORS | (09/15/21)**

● SYSTEM - 1045	<div style="width: 100%; height: 10px; background-color: #0056b3;"></div>
▲ AVAILABLE - 665 (63.6%)	<div style="width: 63.6%; height: 10px; background-color: #c00000;"></div>
X OCCUPIED - 380 (36.4%)	<div style="width: 36.4%; height: 10px; background-color: #808080;"></div>
◆ COVID - 84 (22.1%) *0 FROM ED	<div style="width: 22.1%; height: 10px; background-color: #ffc000;"></div>





09/16/21

**COVID 19 ORANGE COUNTY HOSPITAL SYSTEM DATA (CA SNOWFLAKE SERVER)**

**7 DAY HISTORY BED OCCUPANCY | 09/15/2021**

● **SYSTEM BEDS (INCLUDES SURGE)- 6921**

◆ **INPATIENT INCLUDING SURGE- 3949 (57.1%)**

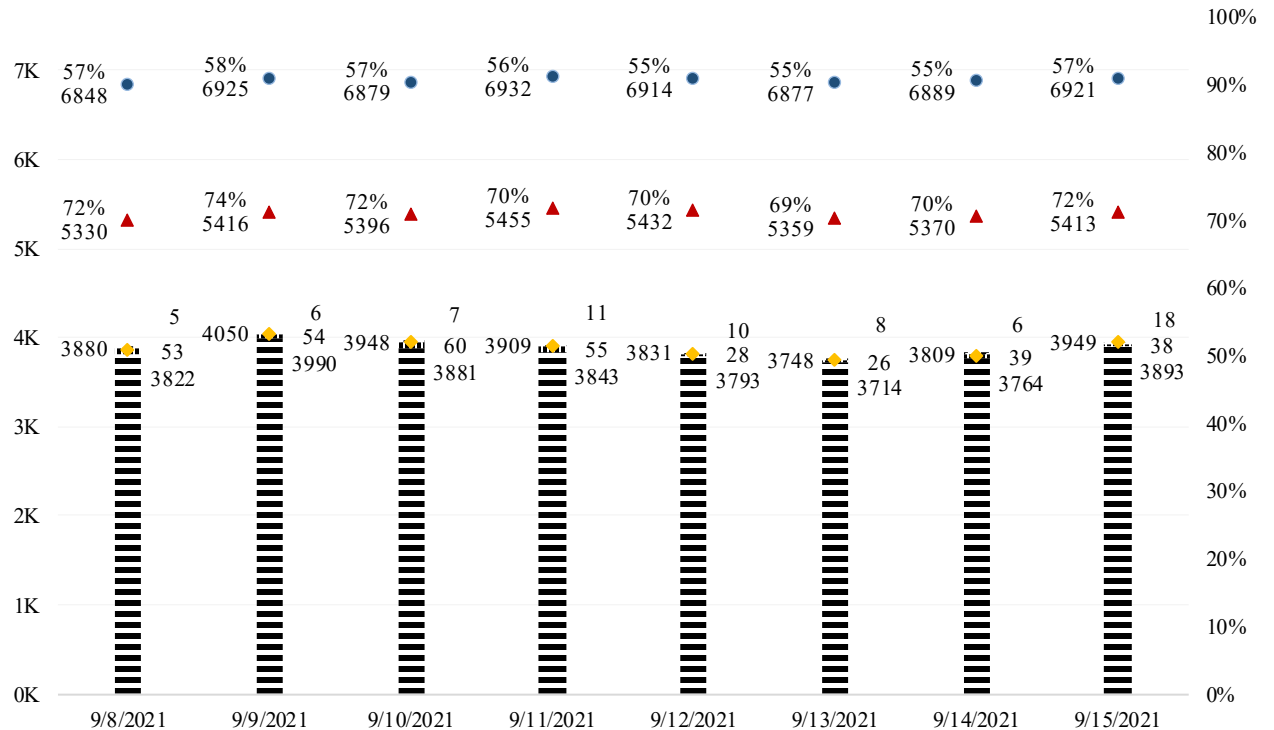
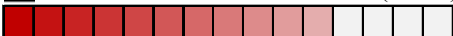


|||| **SURGE NON ICU INPATIENT- 38**

▨ **SURGE ICU INPATIENT- 18**

▲ **NON SURGE INPATIENT BEDS- 5413**

▨ **NON SURGE INPATIENT- 3893 (71.9%)**



**SURGE CENSUS | 09/15/2021**

● **SURGE BED SYSTEM- 964 (ICU- 102 | NON ICU- 862)**

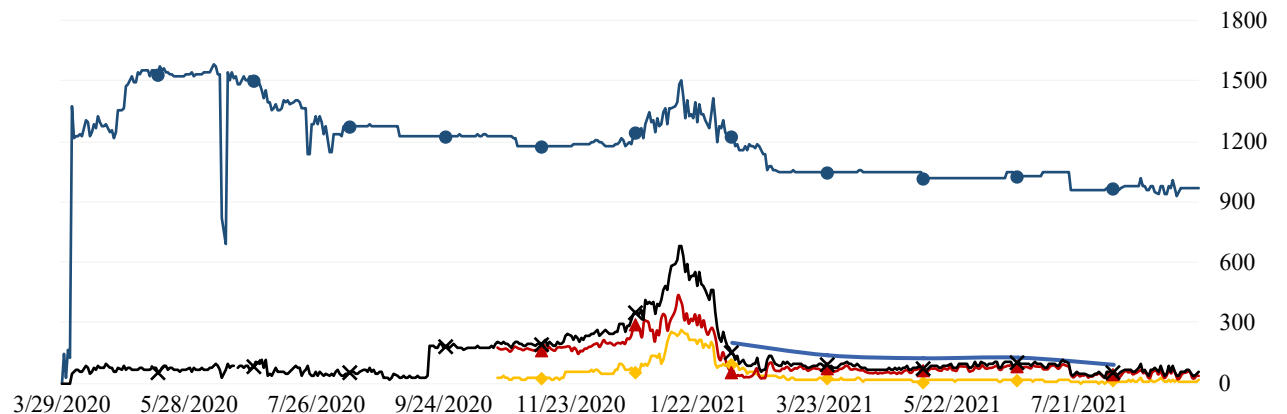
X **SURGE BED PATIENTS SYSTEM- 56 (5.8%)**



▲ **SURGE BED NON ICU PATIENTS- 38 (4.4%)**



◆ **SURGE BED ICU PATIENTS- 18 (17.6%)**



09/16/21

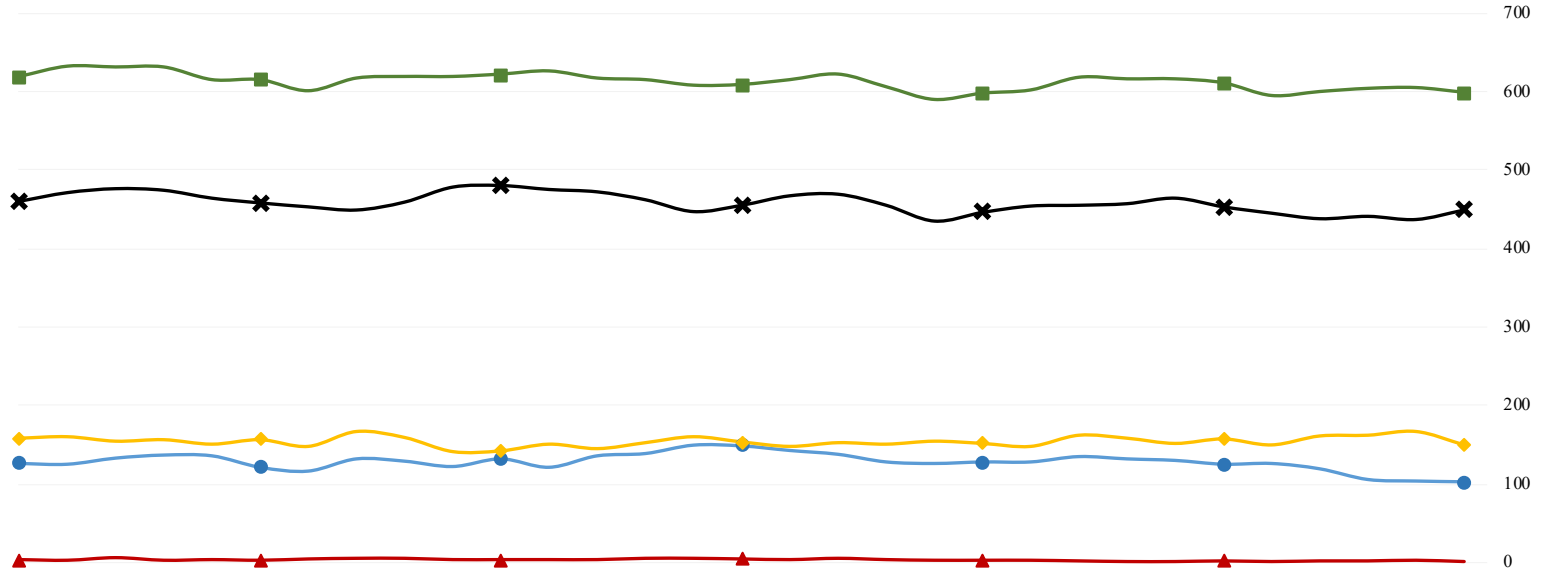
**COVID 19 ORANGE COUNTY HOSPITAL SYSTEM DATA (CA SNOWFLAKE SERVER)**

**NON SURGE ICU BEDS: ADULT & Peds COMBINED (08/17/21 - 09/15/21) | 33 ACUTE CARE FACILITIES REPORTING**

**ICU INSIGHTS**

08-17-21 thru 09-15-21:

- Confirmed COVID+ in ICU decreased by -18.4%
- ▲ Confirmed suspect in ICU decreased by -100.0%
- ✕ Occupied ICU decreased by -4.7%
- ◆ Available ICU decreased by -6.9%
- System ICU decreased by -5.2%



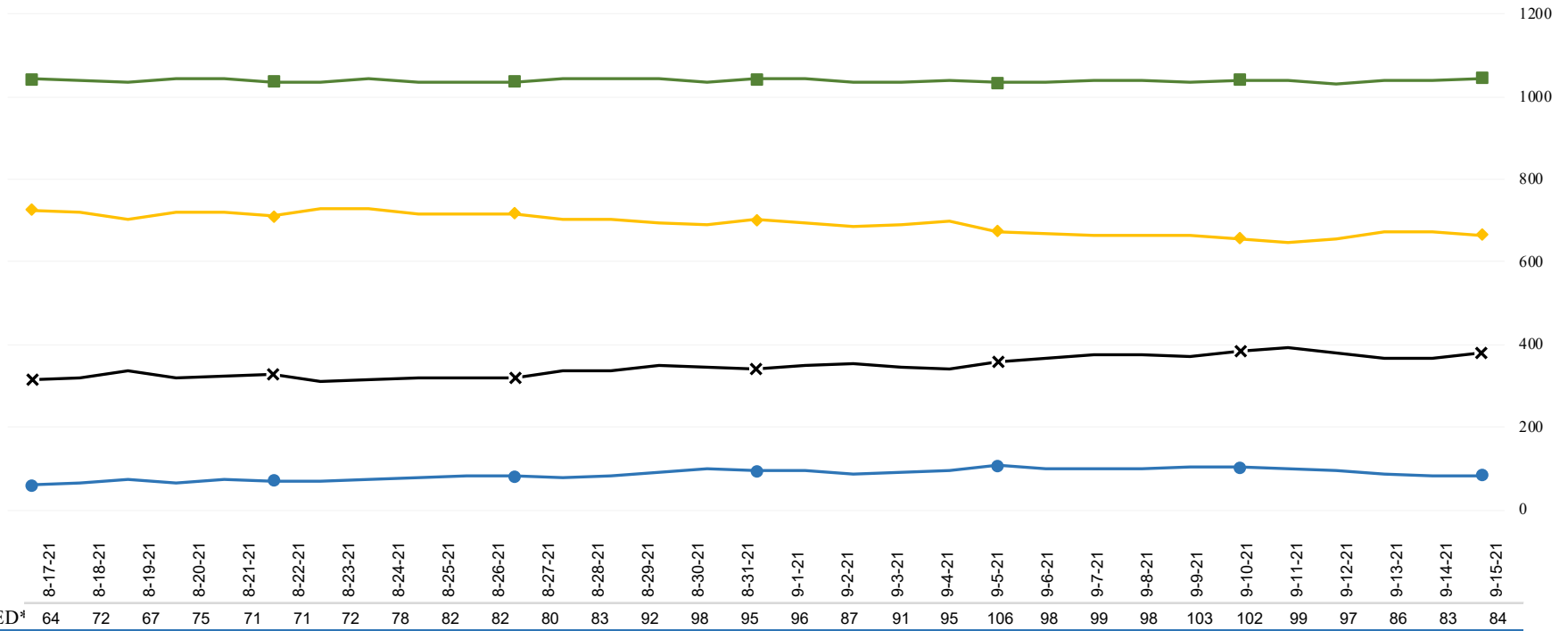
	8-17-21	8-18-21	8-19-21	8-20-21	8-21-21	8-22-21	8-23-21	8-24-21	8-25-21	8-26-21	8-27-21	8-28-21	8-29-21	8-30-21	8-31-21	9-1-21	9-2-21	9-3-21	9-4-21	9-5-21	9-6-21	9-7-21	9-8-21	9-9-21	9-10-21	9-11-21	9-12-21	9-13-21	9-14-21	9-15-21
<b>● CONFIRMED</b>	125	133	137	136	121	116	132	129	122	132	121	136	139	150	149	143	138	128	126	128	128	135	132	130	125	126	119	105	103	102
<i>Adult</i>	120	127	132	132	120	115	128	127	117	127	118	133	137	146	142	137	132	123	123	125	125	131	129	127	122	124	117	103	101	100
<i>Peds</i>	5	6	5	4	1	1	4	2	5	5	3	3	2	4	7	6	6	5	3	3	3	4	3	3	3	2	2	2	2	2
<b>▲ SUSPECTED</b>	2	6	2	3	2	4	5	5	3	3	3	3	5	5	4	3	5	3	2	2	2	1	0	0	1	0	1	1	2	0
<i>Adult</i>	2	6	2	3	2	4	5	5	3	3	3	3	4	5	4	3	5	3	2	2	1	1	0	0	1	0	1	1	2	0
<i>Peds</i>	0	0	0	0	0	0	0	0	0	0	0	0	1	0	0	0	0	0	0	0	1	0	0	0	0	0	0	0	0	0
<b>✕ OCCUPIED</b>	471	476	474	464	458	453	449	459	478	480	475	472	462	447	455	467	469	455	435	446	454	455	457	464	453	445	438	441	437	449
<i>Adult</i>	441	443	444	431	430	428	423	432	443	444	438	434	428	413	422	438	445	428	411	419	424	426	424	427	420	405	406	408	399	413
<i>Peds</i>	30	33	30	33	28	25	26	27	35	36	37	38	34	34	33	29	24	27	24	27	30	29	33	37	33	40	32	33	38	36
<b>◆ SYSTEM AVL</b>	160	154	156	150	156	147	167	159	140	141	150	144	152	160	153	147	152	150	154	151	147	162	158	151	157	149	161	162	167	149
<i>Adult</i>	129	126	125	122	123	111	132	125	114	116	126	121	125	133	125	115	115	116	117	117	116	130	130	127	129	128	132	134	144	124
<i>Peds</i>	31	28	31	28	33	36	35	34	26	25	24	23	27	27	28	32	37	34	37	34	31	32	28	24	28	21	29	28	23	25
<b>■ SYSTEM TTL</b>	631	630	630	614	614	600	616	618	618	621	625	616	614	607	608	614	621	605	589	597	601	617	615	615	610	594	599	603	604	598
<i>Adult</i>	570	569	569	553	553	539	555	557	557	560	564	555	553	546	547	553	560	544	528	536	540	556	554	554	549	533	538	542	543	537
<i>Peds</i>	61	61	61	61	61	61	61	61	61	61	61	61	61	61	61	61	61	61	61	61	61	61	61	61	61	61	61	61	61	61

**COVID 19 ORANGE COUNTY HOSPITAL SYSTEM DATA (CA SNOWFLAKE SERVER)**

**VENTILATORS (08/17/21 - 09/15/21) | 33 ACUTE CARE FACILITIES REPORTING**

**VENTILATOR INSIGHTS**  
08-17-21 thru 09-15-21:

- Confirmed COVID+ patients on ventilators increased by 31.3%
- ✕ Occupied ventilators increased by 18.8%
- ◆ System available ventilators decreased by -7.8%
- Total system ventilators increased by 0.4%



	8-17-21	8-18-21	8-19-21	8-20-21	8-21-21	8-22-21	8-23-21	8-24-21	8-25-21	8-26-21	8-27-21	8-28-21	8-29-21	8-30-21	8-31-21	9-1-21	9-2-21	9-3-21	9-4-21	9-5-21	9-6-21	9-7-21	9-8-21	9-9-21	9-10-21	9-11-21	9-12-21	9-13-21	9-14-21	9-15-21
● CONFIRMED*	64	72	67	75	71	71	72	78	82	82	80	83	92	98	95	96	87	91	95	106	98	99	98	103	102	99	97	86	83	84
✕ OCCUPIED	320	335	320	323	326	309	315	321	320	319	338	338	349	346	339	348	353	344	342	360	367	374	374	371	383	394	378	366	368	380
◆ SYSTEM AVL	721	702	722	721	711	728	727	716	717	718	704	704	695	691	703	694	684	692	698	674	667	666	666	663	657	646	654	674	671	665
■ SYSTEM TTL	1041	1037	1042	1044	1037	1037	1042	1037	1037	1037	1042	1042	1044	1037	1042	1042	1037	1036	1040	1034	1034	1040	1040	1034	1040	1040	1032	1040	1039	1045

\*Confirmed includes ED values

\*Data Source: California Department of Public Health (CDPH) – Snowflake server

\*\*Current Snowflake Data Dictionary may be found at:

[https://www.calhospital.org/sites/main/files/file-attachments/data\\_dictionary\\_cha\\_covid\\_tracker\\_4-17-20.pdf](https://www.calhospital.org/sites/main/files/file-attachments/data_dictionary_cha_covid_tracker_4-17-20.pdf)

**Acute Care Hospital PPE / Ventilator Supplies Days on Hand – (33/33 ACHs reported)**

Reporting Date: 9/15/21*	30 days +	15-30 days	7-14 days	4-6 days	0-3 days	Not Reported
Ventilator Supplies**	8	6	17	1	1	0
N95 Masks**	30	3	0	0	0	0
Surgical Masks**	26	6	1	0	0	0
Face Shields**	26	3	3	1	0	0
Gloves**	22	5	6	0	0	0
Gowns**	21	7	5	0	0	0

**Hospital Criteria for shifting to Crisis Care Strategies**

**LEGEND**

**STATUS**

CRITERIA	STATUS		
	Normal Operations	Modified Operations	Modified Operations Assistance Needed
Rate of change in Hospitalized COVID-19 patients (doubling time over last 7 days)	Never to 4 weeks to double	4 weeks to 2 weeks to double	Less than 2 weeks to double
Absolute COVID-19 Census in the hospitals across Orange County	Less than 750	750-1500	>1500
Hospital census as a percentage of staffed capacity	<80%	80% to 90%	>90%
Hospital ICU census as a percentage of staffed ICU capacity	<70%	70% to 85%	>85%

**Hospital Criteria for shifting to Crisis Care Strategies**

Reporting Date: 9/15/21

**STATUS**

CRITERIA	STATUS		
	Normal Operations	Modified Operations Under Control	Modified Operations Assistance Needed
Rate of change in Hospitalized COVID-19 patients (doubling time over last 7 days)	Never to 4 weeks to double		
Absolute COVID-19 Census in the hospitals across Orange County	371		
Hospital census as a percentage of staffed capacity	72%		
Hospital ICU census as a percentage of staffed ICU capacity		75%	

**AGENCY OPERATIONS CENTER / LOGISTICS SECTION**

- The AOC is activated M-F **from 0900-1600 at Level II**; Warehouse Ops are M-F - 0900-1600.
- SCARCE Resources: Gloves, Syringes, Needles

**Inventory Report 5/24/21 - 9/12/21**

**Logistics Daily Units Distributed 9/13 - 9/14/21**

N95 Mask	0
Surgical Mask	6,000
Gown	0
Gloves	0
PPE-Suit	0
Face Shields/Eye Protection	0
Hand Sanitizer	0
Other	21,227
<b>Total Units</b>	<b>27,227</b>

**Medical Supply/Equipment Total Units Distributed**

N95 Mask	430,300
Surgical Mask	411,610
Gowns	675,110
PPE-Suit	1,000
Gloves	2,264,500
Eye Protection	54,676
Hand Sanitizer	7,675
Other Items	639,953
<b>Total Units</b>	<b>4,484,824</b>

**Resource Requests - Updated 9/15/21 at 0905**

*\*Most recent data through 9/14/2021*

Received ■ Filled ●

