



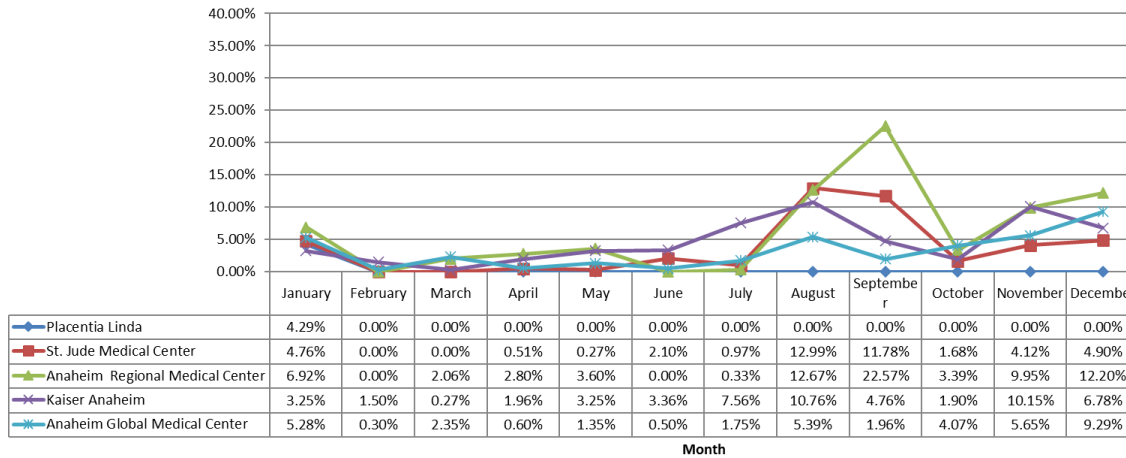
**Orange County
Emergency Medical Services
Diversion Report
January to December, 2021**

Emergency Receiving Center Diversion- Percent of Time

North Area- 2021 - ERC Diversion

North Area Includes:

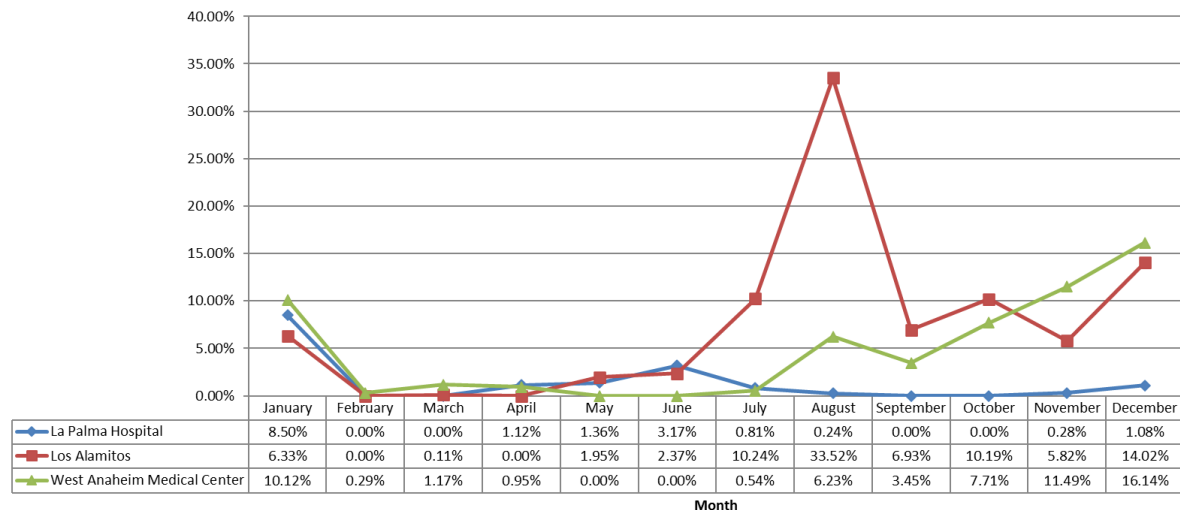
- Placentia Linda Hospital
- St. Jude Medical Center
- Anaheim Regional Medical Center
- Kaiser Anaheim
- Anaheim Global Medical Center



West Area Includes:

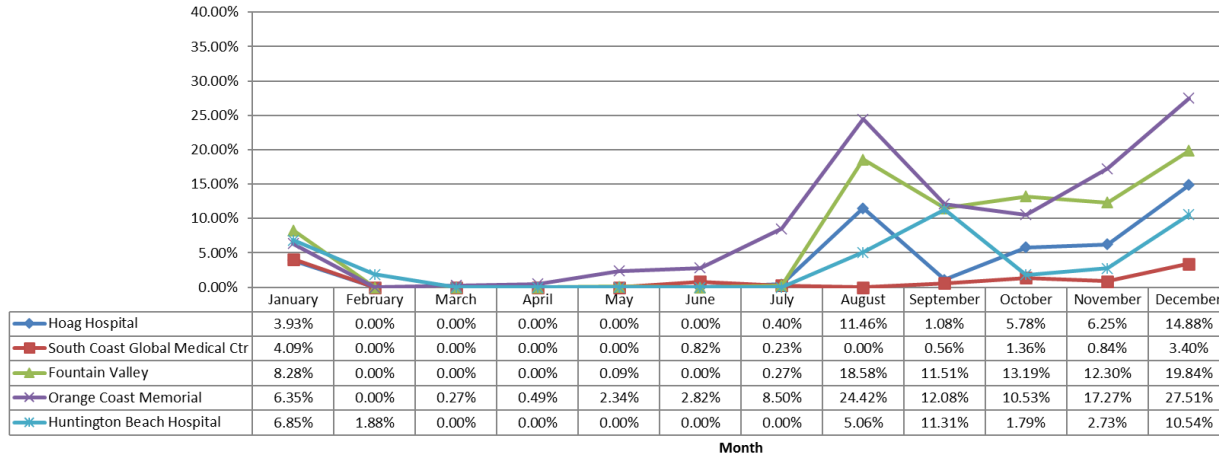
- La Palma Hospital
- Los Alamitos Medical Center
- West Anaheim Medical Center

West Area - 2021 - ERC Diversion



Emergency Receiving Center Diversion- Percent of Time

Coastal Area- 2021 - ERC Diversion



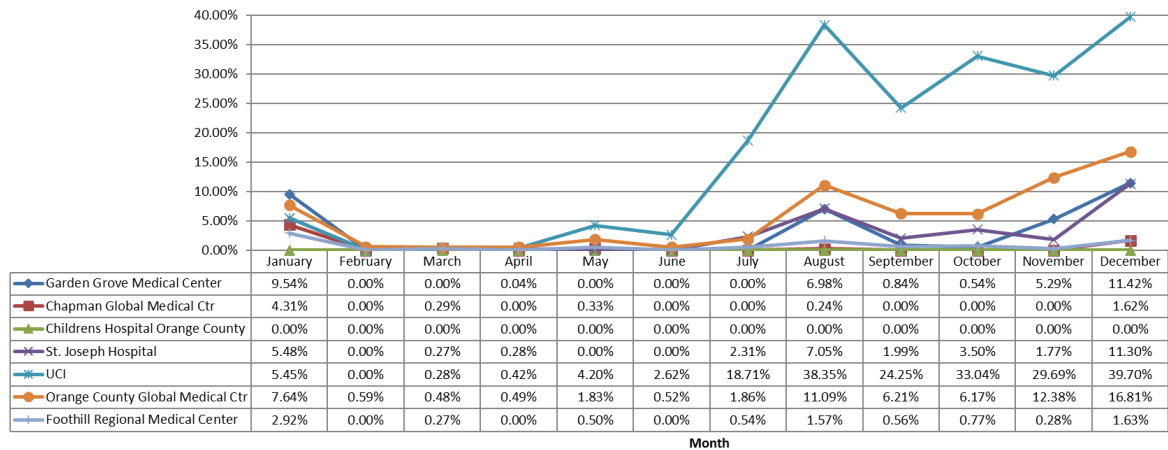
Coastal Area Includes:

- Hoag Hospital Newport Beach
- South Coastal Global Medical Center
- Fountain Valley Hospital
- Orange Coast Memorial Medical Center
- Huntington Beach Hospital

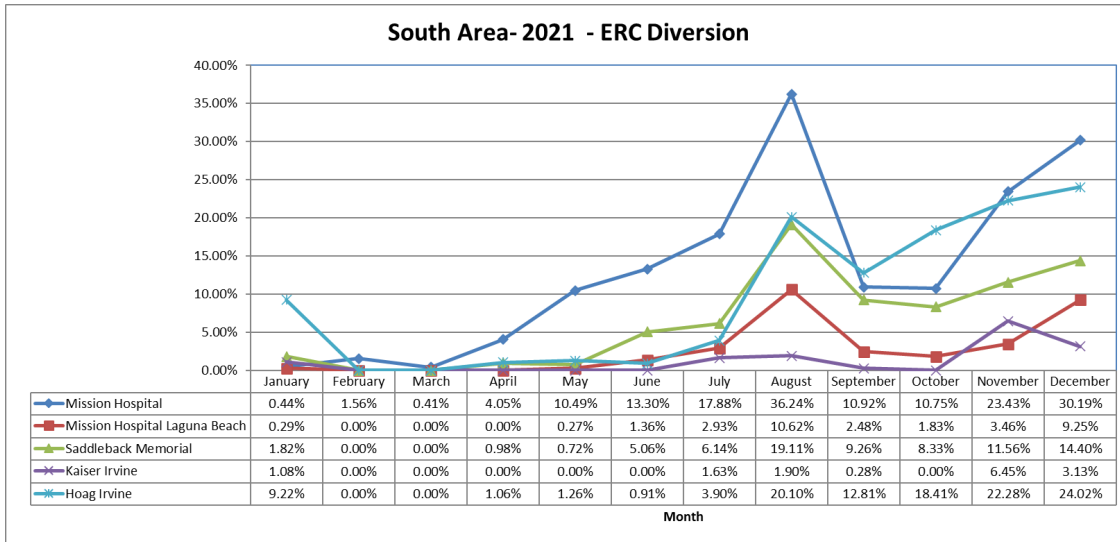
Central Area Includes:

- Garden Grove Medical Center
- Chapman Global Medical Center
- Children's Hospital Orange County
- St. Joseph Hospital
- UCI
- Orange County Global Medical Center
- Foothill Regional Medical Center

Central Area- 2021 - ERC Diversion

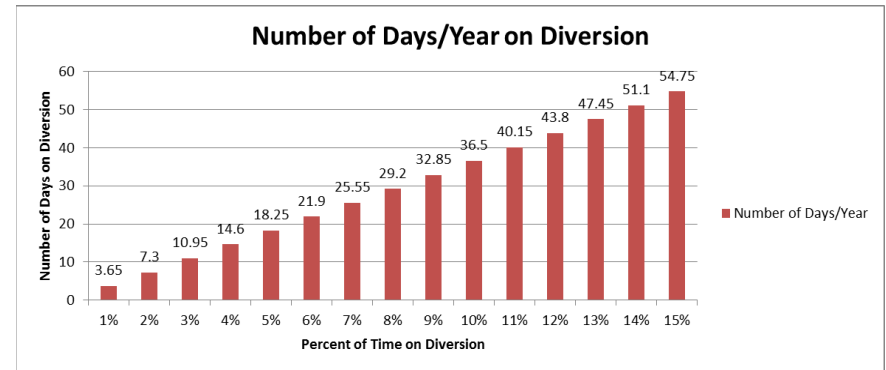
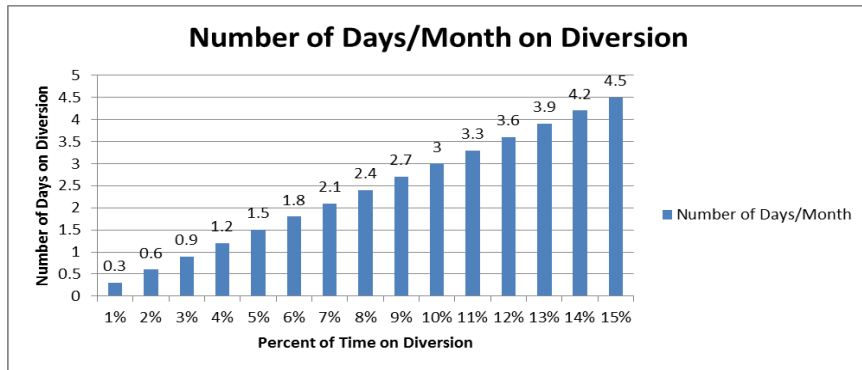


Emergency Receiving Center Diversion- Percent of Time



South Area Includes:

- Mission Hospital – Mission Viejo
- Mission Hospital – Laguna Beach
- Saddleback Memorial Medical Center
- Laguna Hills
- Kaiser Hospital – Irvine
- Hoag Hospital - Irvine



The two charts above demonstrate the monthly and annual impact of diversion represented as a total number of days an ERC would not receive patients given the percent of time of diversion.

Note: Number of days/month based on 30 days in a month

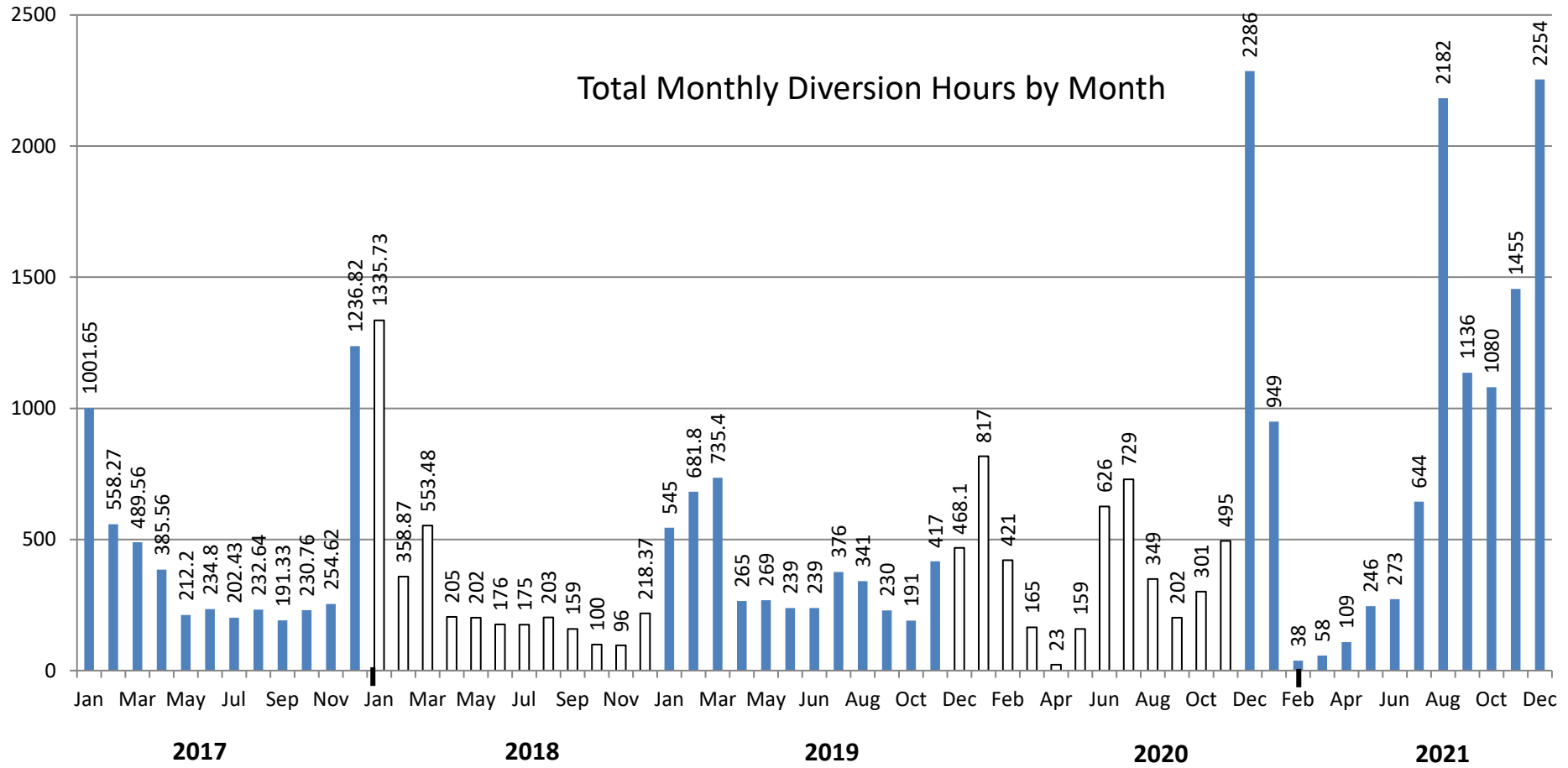
Emergency Receiving Center Diversion- Total Hours

Emergency Receiving Center Diversion Hours 2021

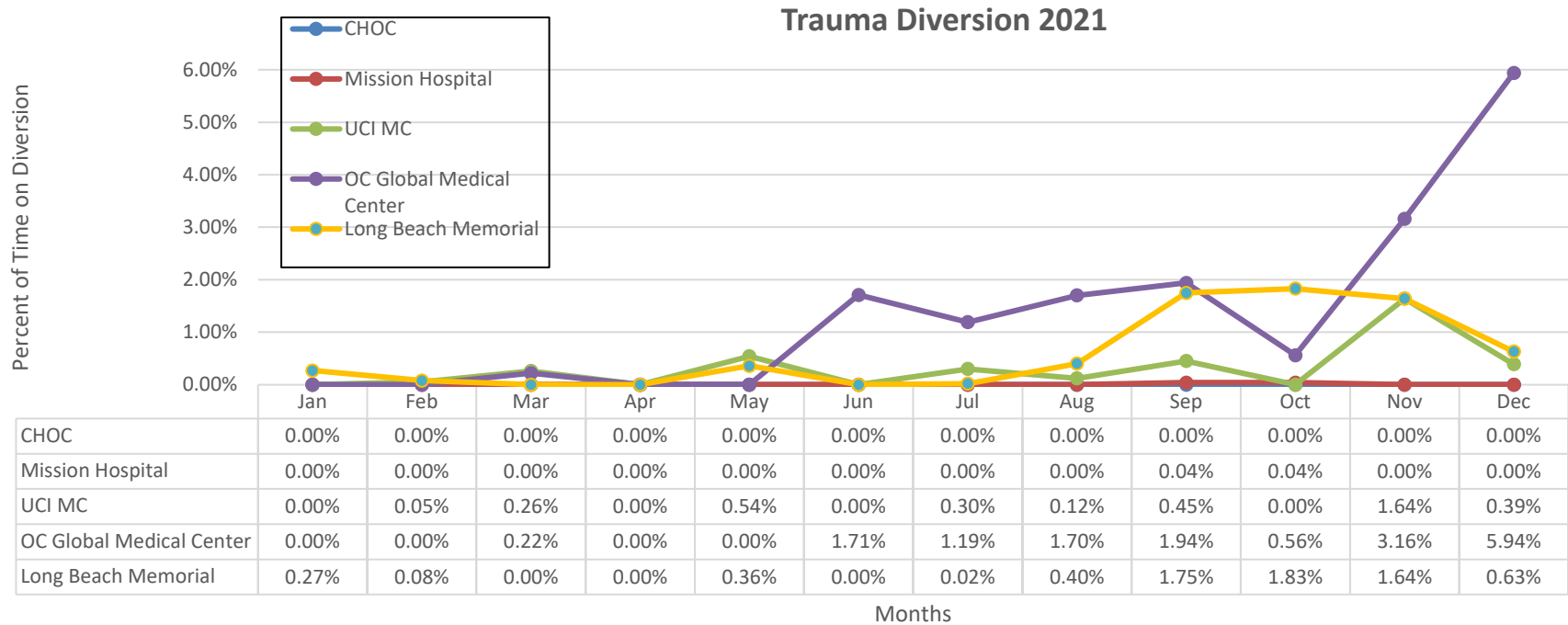
	Jan	Feb	Mar	Apr	May	Jun	Jul	Aug	Sept	Oct	Nov	Dec
Anaheim Global Medical Ctr	39.00	2.00	17.00	4.00	10.00	3.00	12.00	40.00	14.00	30.00	40.00	69.00
Anaheim Regional Med Ctr	51.00	0.00	15.00	20.00	26.00	0.00	2.00	94.00	163.00	25.00	71.00	90.00
Chapman Global Medical Ctr	32.00	0.00	2.00	0.00	2.00	0.00	0.00	1.00	0.00	0.00	0.00	12.00
CHOC	0.00	0.00	0.00	0.00	0.00	0.00	0.00	0.00	0.00	0.00	0.00	0.00
Foothill Regional Medical Ctr	21.00	0.00	2.00	0.00	3.00	0.00	4.00	11.00	4.00	5.00	2.00	12.00
Fountain Valley	61.00	0.00	0.00	0.00	0.00	0.00	2.00	138.00	83.00	98.00	88.00	147.00
Garden Grove Hospital	71.00	0.00	0.00	0.00	0.00	0.00	0.00	51.00	6.00	4.00	38.00	85.00
Hoag Hospital Irvine	68.00	0.00	0.00	7.00	9.00	6.00	29.00	149.00	92.00	136.00	160.00	178.00
Hoag Newport	29.00	0.00	0.00	0.00	0.00	0.00	2.00	85.00	8.00	43.00	45.00	110.00
Huntington Beach	50.00	12.00	0.00	0.00	0.00	0.00	0.00	37.00	81.00	13.00	19.00	78.00
Kaiser Anaheim	24.00	10.00	2.00	14.00	24.00	24.00	56.00	80.00	34.00	14.00	73.00	50.00
Kaiser Irvine	8.00	0.00	0.00	0.00	0.00	0.00	12.00	14.00	2.00	0.00	46.00	23.00
La Palma Intercommunity	63.00	0.00	0.00	8.00	10.00	22.00	6.00	1.00	0.00	0.00	2.00	8.00
Los Alamitos	47.00	0.00	0.00	0.00	14.00	17.00	76.00	249.00	50.00	75.00	41.00	104.00
Mission Hospital Laguna	2.00	0.00	0.00	0.00	2.00	9.00	21.00	79.00	18.00	13.00	24.00	68.00
Mission Hospital Mission	3.00	10.00	3.00	29.00	78.00	95.00	133.00	269.00	79.00	79.00	168.00	224.00
Orange Coast Memorial	47.00	0.00	2.00	3.00	17.00	20.00	63.00	181.00	87.00	78.00	124.00	204.00
Orange County Global Med	56.00	3.00	3.00	3.00	13.00	3.00	13.00	82.00	45.00	45.00	89.00	125.00
Placentia Linda Hospital	31.00	0.00	0.00	0.00	0.00	0.00	0.00	0.00	0.00	0.00	0.00	0.00
Saddleback Memorial	13.00	0.00	0.00	7.00	5.00	36.00	45.00	142.00	67.00	61.00	83.00	107.00
South Coast Global	30.00	0.00	0.00	0.00	0.00	5.00	1.00	0.00	4.00	10.00	6.00	25.00
St Joseph	40.00	0.00	2.00	2.00	0.00	0.00	17.00	52.00	14.00	26.00	12.00	84.00
St. Jude Medical Ctr	35.00	0.00	0.00	3.00	2.00	15.00	7.00	96.00	85.00	12.00	29.00	36.00
UCI	40.00	0.00	2.00	3.00	31.00	18.00	139.00	285.00	175.00	245.00	213.00	295.00
West Anaheim Medical Ctr	75.00	1.00	8.00	6.00	0.00	0.00	4.00	46.00	25.00	57.00	82.00	120.00



Emergency Receiving Center Diversion 2017 - 2021



Trauma Receiving Center Diversion- Percent of Time



Cardiovascular Receiving Center Diversion- Percent of Time

CVRC 2021												
	Jan	Feb	Mar	Apr	May	Jun	Jul	Aug	Sept	Oct	Nov	Dec
Anaheim Global Medical Ctr	0.00%	0.00%	0.00%	0.58%	1.79%	1.47%	0.0%	0.0%	0.0%	0.0%	0.0%	0.0%
Anaheim Regional Medical Ctr	0.00%	0.00%	0.00%	0.00%	0.00%	0.00%	0.0%	0.0%	0.1%	0.0%	0.0%	0.0%
Fountain Valley	0.00%	0.00%	0.00%	0.00%	0.00%	0.00%	0.0%	0.0%	6.8%	14.7%	6.4%	4.7%
Hoag Hospital Irvine	0.00%	0.00%	0.00%	0.00%	0.00%	0.00%	0.0%	0.0%	0.4%	0.0%	0.4%	0.0%
Hoag Hospital Newport	0.00%	0.00%	0.00%	0.00%	0.00%	0.00%	0.0%	0.0%	0.2%	0.0%	0.0%	0.0%
Los Alamitos	0.00%	0.00%	0.00%	0.00%	0.00%	0.00%	3.0%	1.8%	0.0%	0.5%	0.0%	16.2%
Orange Coast Memorial Med	0.00%	0.00%	0.00%	0.93%	0.20%	0.00%	0.0%	0.0%	0.0%	0.0%	0.0%	1.0%
Orange County Global Med	0.14%	0.08%	0.00%	0.00%	0.00%	0.00%	0.0%	3.1%	2.5%	1.8%	1.7%	1.2%
Mission Hospital	0.00%	0.00%	0.00%	0.00%	0.00%	0.00%	0.0%	0.0%	0.0%	0.0%	0.0%	0.0%
Saddleback Memorial	0.00%	0.00%	0.00%	0.00%	0.04%	0.00%	0.0%	0.0%	0.0%	0.0%	0.0%	0.0%
St Joseph	0.00%	0.00%	0.00%	0.00%	0.00%	0.00%	0.0%	0.0%	0.0%	0.0%	0.0%	0.0%
St Jude	0.00%	0.00%	0.00%	0.00%	0.00%	0.00%	0.0%	0.0%	0.0%	0.0%	0.0%	7.3%
UCI	0.00%	0.00%	0.00%	0.00%	0.00%	0.00%	0.0%	0.0%	0.0%	0.0%	0.0%	0.0%
West Anaheim Medical Ctr	0.55%	5.91%	3.16%	2.66%	17.91%	3.88%	0.89%	8.43%	0.8%	2.2%	2.8%	4.3%

Highlighted in Red =Diversion Any Amount



Internal Disruption Diversion- Percent of Time

INTERNAL DISRUPTION 2021

	Jan	Feb	Mar	Apr	May	Jun	Jul	Aug	Sept	Oct	Nov	Dec
Anaheim Global Medical Ctr	0.00%	0.00%	0.00%	0.00%	0.19%	0.00%	0.00%	0.00%	0.00%	0.00%	0.19%	0.00%
Anaheim Regional Med Ctr	0.00%	0.00%	0.00%	0.00%	0.00%	0.00%	0.00%	0.15%	0.00%	3.36%	0.00%	0.00%
Chapman Global Medical Ctr	0.00%	0.00%	0.00%	0.00%	1.90%	0.00%	0.00%	0.00%	0.00%	0.00%	0.00%	0.06%
CHOC	0.00%	0.00%	0.00%	0.00%	0.00%	0.00%	0.00%	0.00%	0.00%	0.00%	0.00%	0.00%
Foothill Regional Medical Ctr	0.00%	0.00%	0.00%	0.00%	0.00%	0.00%	0.00%	0.00%	0.00%	0.00%	2.90%	0.00%
Fountain Valley	0.00%	0.00%	0.00%	0.00%	0.00%	0.00%	0.00%	0.00%	0.00%	0.00%	2.09%	0.00%
Garden Grove Hospital	0.00%	0.00%	0.00%	0.00%	0.00%	0.00%	0.00%	0.00%	0.00%	0.00%	0.00%	0.00%
Hoag Hospital Irvine	0.00%	0.00%	0.00%	0.00%	0.00%	0.00%	0.00%	0.00%	0.00%	0.00%	0.00%	0.00%
Hoag Newport	0.00%	0.00%	0.00%	0.00%	0.00%	0.28%	0.00%	0.00%	0.20%	0.22%	0.00%	0.00%
Huntington Beach	0.00%	0.00%	0.00%	0.00%	0.00%	0.00%	0.00%	0.00%	0.00%	0.00%	0.00%	0.00%
Kaiser Anaheim	0.00%	0.00%	0.00%	0.00%	0.00%	0.00%	0.00%	0.00%	0.00%	0.00%	0.00%	0.00%
Kaiser Irvine	0.00%	0.00%	0.00%	0.00%	0.00%	0.00%	0.00%	0.00%	0.00%	0.00%	0.00%	0.00%
La Palma Intercommunity	0.00%	0.00%	0.00%	0.00%	0.00%	0.00%	0.00%	0.00%	0.00%	0.00%	0.00%	0.00%
Los Alamitos	0.19%	0.00%	0.00%	0.00%	0.00%	0.00%	0.00%	0.02%	0.00%	0.00%	0.00%	0.00%
Mission Hospital Laguna	0.31%	0.00%	0.68%	0.00%	0.00%	0.00%	0.00%	0.00%	0.11%	0.00%	0.00%	0.00%
Mission Hospital Mission	0.00%	0.00%	0.00%	0.00%	0.00%	0.00%	0.34%	0.00%	0.00%	0.07%	0.00%	0.00%
Orange Coast Memorial	0.00%	0.00%	0.00%	0.00%	0.00%	0.00%	0.00%	0.00%	0.00%	0.48%	0.00%	0.28%
Orange County Global Med	0.00%	0.00%	0.00%	0.00%	0.00%	0.30%	0.00%	0.00%	0.00%	0.00%	0.00%	0.00%
Placentia Linda Hospital	0.00%	0.00%	0.00%	0.00%	0.00%	0.00%	0.00%	0.00%	0.00%	0.00%	0.00%	0.00%
Saddleback Memorial	0.00%	0.00%	0.00%	0.00%	0.00%	0.00%	0.00%	0.00%	0.00%	0.00%	0.00%	0.23%
South Coast Global	0.00%	0.00%	0.00%	0.00%	0.00%	0.00%	0.00%	0.00%	0.18%	0.00%	0.06%	0.00%
St Joseph	0.00%	0.00%	0.00%	0.00%	0.00%	0.00%	0.00%	0.00%	0.00%	0.00%	0.00%	0.00%
St. Jude Medical Ctr	0.00%	0.00%	0.00%	0.00%	0.00%	0.00%	0.00%	0.00%	0.00%	0.00%	0.00%	0.00%
UCI	0.00%	0.00%	0.00%	0.00%	0.00%	0.00%	0.00%	0.00%	0.00%	0.00%	0.00%	0.00%
West Anaheim Medical Ctr	0.00%	0.00%	0.00%	0.00%	0.00%	0.00%	0.52%	0.00%	0.00%	0.00%	0.98%	0.03%



Highlighted in Red = Diversion Any Amount

CT Diversion Report- Percent of Time

CT Diversion 2021												
	Jan	Feb	Mar	Apr	May	Jun	Jul	Aug	Sept	Oct	Nov	Dec
Anaheim Global Medical Ctr	0.00%	0.37%	3.90%	2.62%	12.33%	0.00%	0.11%	8.06%	4.80%	0.00%	0.00%	0.00%
Anaheim Regional Med Ctr	0.54%	0.00%	1.19%	0.33%	2.94%	2.11%	0.80%	1.68%	0.49%	0.46%	0.60%	0.60%
Chapman Global Medical Ctr	0.00%	0.00%	0.00%	0.69%	0.00%	0.00%	0.00%	0.00%	0.00%	0.00%	0.86%	0.00%
CHOC	0.00%	0.00%	0.00%	0.00%	0.00%	0.00%	0.00%	0.00%	0.00%	0.00%	0.00%	0.00%
Foothill Regional Medical Ctr	0.00%	0.00%	0.00%	1.37%	0.00%	0.29%	0.00%	1.07%	0.59%	0.00%	0.00%	0.81%
Fountain Valley	0.00%	0.00%	0.00%	0.00%	0.00%	0.00%	0.00%	0.00%	0.00%	0.00%	0.57%	0.00%
Garden Grove Hospital	0.00%	0.00%	0.00%	0.00%	0.00%	0.00%	0.00%	0.00%	0.00%	0.00%	0.00%	0.00%
Hoag Hospital Irvine	0.00%	0.00%	0.00%	0.23%	0.00%	0.00%	0.00%	0.00%	0.00%	0.00%	0.00%	0.00%
Hoag Newport	0.00%	0.00%	0.00%	0.00%	0.00%	0.00%	0.00%	0.00%	0.00%	0.00%	0.00%	0.00%
Huntington Beach	0.00%	0.00%	0.52%	0.00%	0.00%	0.01%	0.35%	0.00%	0.00%	0.31%	0.00%	0.00%
Kaiser Anaheim	0.00%	0.00%	0.00%	0.00%	0.30%	0.00%	0.00%	0.00%	0.00%	0.00%	0.00%	0.00%
Kaiser Irvine	0.00%	0.00%	0.00%	0.00%	0.00%	0.00%	0.00%	0.00%	0.00%	0.00%	0.00%	0.00%
La Palma Intercommunity	0.00%	0.00%	0.00%	0.00%	0.00%	1.16%	0.00%	0.13%	0.00%	0.03%	0.00%	0.21%
Los Alamitos	0.00%	0.00%	0.00%	0.00%	0.50%	0.19%	0.00%	0.00%	0.74%	0.00%	0.00%	0.00%
Mission Hospital Laguna	0.30%	0.00%	0.00%	0.00%	0.00%	0.00%	9.63%	0.00%	0.00%	0.00%	7.43%	12.82%
Mission Hospital Mission	0.00%	0.00%	0.00%	0.00%	0.00%	0.00%	0.00%	0.00%	0.00%	0.04%	0.00%	0.00%
Orange Coast Memorial	0.00%	0.00%	0.00%	0.00%	0.14%	0.00%	0.09%	0.00%	0.00%	0.00%	0.00%	0.12%
Orange County Global Med	0.05%	0.00%	0.00%	0.00%	0.00%	0.93%	0.00%	0.00%	0.16%	0.20%	0.00%	3.01%
Placentia Linda Hospital	0.00%	0.00%	0.00%	0.00%	0.00%	0.00%	0.00%	0.00%	0.00%	0.00%	0.00%	0.00%
Saddleback Memorial	0.00%	0.00%	0.00%	0.12%	0.04%	0.00%	0.00%	0.00%	0.00%	0.00%	0.00%	0.00%
South Coast Global	0.00%	0.00%	1.45%	0.24%	0.00%	12.36%	0.59%	18.52%	0.71%	0.03%	0.00%	0.00%
St Joseph	0.00%	0.00%	1.09%	0.00%	0.00%	0.00%	0.00%	0.00%	0.00%	0.00%	0.00%	0.00%
St. Jude Medical Ctr	0.00%	0.00%	0.00%	0.00%	0.00%	0.00%	0.00%	0.00%	0.00%	0.00%	0.00%	0.00%
UCI	0.00%	0.00%	0.00%	0.00%	0.00%	0.00%	0.00%	0.00%	0.00%	0.00%	0.00%	0.00%
West Anaheim Medical Ctr	0.85%	0.38%	0.00%	0.00%	0.00%	0.10%	0.00%	0.00%	0.14%	0.00%	0.00%	0.00%



Highlighted in Red = Diversion Any Amount

Neuro Diversion Report- Percent of Time

Neuro Diversion 2021

	Jan	Feb	Mar	Apr	May	Jun	Jul	Aug	Sept	Oct	Nov	Dec
Fountain Valley	0.00%	0.00%	0.00%	0.00%	0.00%	0.06%	0.00%	0.00%	5.09%	14.67%	6.94%	4.42%
Hoag Newport	0.00%	0.00%	0.00%	0.00%	0.00%	0.00%	0.00%	0.00%	0.00%	0.00%	0.26%	0.03%
Los Alamitos	0.00%	0.00%	0.00%	0.00%	0.36%	0.59%	4.16%	1.77%	0.72%	1.40%	0.00%	1.92%
Mission Hospital Mission	0.00%	0.00%	0.00%	0.00%	1.59%	0.90%	1.98%	0.00%	0.00%	4.97%	0.14%	1.20%
Orange County Global Med	0.00%	0.00%	0.00%	0.00%	0.00%	0.17%	0.06%	0.00%	4.06%	0.00%	0.00%	3.04%
Saddleback Memorial	0.00%	0.00%	0.00%	0.00%	3.36%	0.97%	6.53%	12.15%	6.72%	22.69%	36.75%	17.35%
St Joseph	0.00%	0.00%	0.00%	0.00%	0.00%	0.00%	0.00%	0.00%	0.00%	0.00%	0.74%	0.22%
St. Jude Medical Ctr	0.00%	0.00%	0.00%	0.00%	0.00%	0.00%	0.00%	0.00%	0.00%	0.05%	0.00%	0.28%
UCI	0.00%	0.00%	0.00%	0.00%	0.00%	0.00%	0.00%	0.00%	0.00%	0.00%	0.00%	0.00%

Saddleback on suspension as of 12/15/21



HEAR RADIO Response Rate

Facility	Jan	Feb	Mar	Apr	May	Jun	Jul	Aug	Sep	Oct	Nov	Dec
Anaheim Global Medical Center	83%	100%	86%	86%	100%	100%	100%	100%	100%	86%	86%	67%
Anaheim Regional Medical Center	0%	17%	14%	0%	0%	20%	29%	0%	14%	71%	100%	33%
Chapman Global Medical Center	67%	100%	100%	86%	100%	100%	100%	100%	100%	100%	100%	83%
CHOC	83%	100%	86%	100%	100%	100%	100%	100%	100%	86%	71%	100%
Foothill Regional Medical Center	83%	67%	43%	29%	17%	80%	86%	100%	100%	100%	86%	83%
Fountain Valley MC	83%	100%	100%	100%	100%	100%	100%	100%	86%	86%	86%	100%
Garden Grove MC	67%	100%	57%	71%	0%	20%	14%	14%	71%	57%	86%	83%
Hoag Irvine	83%	100%	100%	100%	100%	100%	100%	100%	100%	100%	100%	100%
Hoag Newport	83%	100%	100%	100%	100%	100%	100%	100%	100%	86%	100%	100%
Huntington Beach Hospital	83%	83%	100%	100%	100%	100%	100%	86%	100%	100%	100%	100%
Kaiser Anaheim	83%	100%	100%	100%	100%	100%	100%	100%	100%	100%	100%	100%
Kaiser Irvine	83%	100%	100%	100%	100%	100%	100%	100%	100%	100%	100%	100%
La Palma Intercommunity Hospital	83%	100%	100%	100%	100%	100%	100%	100%	100%	100%	100%	83%
Los Alamitos Medical Center	67%	83%	100%	100%	100%	100%	86%	86%	100%	57%	29%	33%
Mission Hospital Laguna Beach	83%	83%	100%	100%	100%	100%	100%	100%	86%	100%	100%	100%
Mission Hospital MV	83%	83%	100%	86%	100%	100%	100%	86%	100%	100%	100%	100%
Orange Coast Memorial MC	83%	100%	100%	100%	100%	100%	100%	100%	100%	100%	86%	83%
OC Global MC	83%	100%	100%	100%	100%	100%	100%	100%	100%	100%	100%	83%
Placentia-Linda Hospital	83%	100%	100%	100%	100%	100%	100%	100%	71%	100%	100%	100%
Saddleback Memorial Medical Center	83%	67%	100%	100%	100%	100%	100%	100%	100%	86%	86%	83%
South Coast Global Medical Center	83%	100%	43%	100%	100%	100%	100%	100%	86%	100%	100%	100%
St. Joseph Hospital	67%	83%	86%	86%	83%	100%	100%	100%	100%	100%	100%	67%
St Jude MC	83%	100%	71%	100%	83%	100%	100%	86%	100%	71%	86%	100%
UCI	83%	100%	100%	100%	100%	100%	100%	100%	100%	86%	100%	100%
West Anaheim Medical Center	83%	100%	100%	100%	83%	100%	100%	100%	100%	100%	100%	83%



Highlighted in Red = Response Rate < 90%