



EMERGENCY MEDICAL CARE COMMITTEE



Regular Meeting Agenda

Friday, July 9, 2021--9:00 a.m.

Location: Computer or Cell phone

(There will not be a physical meeting at the Hall of Administration (HOA) Commission Hearing Room due to limited space capacity)

Mission Statement: “to act in an advisory capacity to the County Board of Supervisors and to Orange County Emergency Medical Services on all matters relating to emergency medical services in Orange County.”

EMERGENCY MEDICARE CARE COMMITTEE MEETINGS ARE OPEN TO THE PUBLIC. YOU MAY SPEAK ON ANY AGENDA ITEM OR ON A MATTER NOT APPEARING ON THE AGENDA, BUT WHICH IS WITHIN THE SUBJECT MATTER JURISDICTION OF THE COMMITTEE.

Join Zoom Meeting

PUBLIC FORUM

At this time, members of the public may address the chairman regarding any items within the subject matter of this advisory committee’s authority provided by law. Comments are limited to 3 minutes per person and 20 minutes for all comments unless different time limits are set by the Chairman; subject to the approval of the Committee. **If you wish to address the committee under the Public Forum, please contact Eileen Endo at endo@ochca.com prior to 8:30am on the day of the meeting.**

Join Zoom Meeting

<https://us06web.zoom.us/j/84401663541?pwd=NHRBYzNFakhYVkVRbUpIZWF4OUc2Zz09>

Meeting ID: 844 0166 3541

Passcode: 861715

One tap mobile

+12532158782,,84401663541#,,,,*861715# US (Tacoma)

+13462487799,,84401663541#,,,,*861715# US (Houston)

Dial by your location

+1 253 215 8782 US (Tacoma)

+1 346 248 7799 US (Houston)

+1 720 707 2699 US (Denver)

+1 301 715 8592 US (Washington DC)

+1 312 626 6799 US (Chicago)

+1 646 558 8656 US (New York)

Meeting ID: 844 0166 3541

Passcode: 861715

Find your local number: <https://us06web.zoom.us/j/84401663541?pwd=NHRBYzNFakhYVkVRbUpIZWF4OUc2Zz09>

1. **CALL TO ORDER**

2. **INTRODUCTIONS/ANNOUNCEMENTS**

Introduction of new Committee members:

- Rebecca Firey, representing the American Red Cross
- Larry Grihalva, MICP, representing the Second District

3. **APPROVAL OF MINUTES**

- *Minutes of April 9, 2021*

(Attachment #1)

Recommended Action: Approve April 9, 2020 minutes.

4. **OCEMS REPORT/CORRESPONDENCE**

- Medical Director's Report
- Health Emergency Management Report
- Hospital Diversion Report (January 1 to June 30, 2021)
- Ambulance Patient Off-load Time (APOT) Report (March through June, 2021)
- EMS Correspondence

(Attachment #2)

(Attachment #3)

(Attachment #4)

5. **EMCC ADVISORY SUBCOMMITTEE AND ADVISORY GROUP REPORTS**

(Hear Reports)

- Facilities Advisory Committee
- County Paramedic Advisory Committee
- Transportation Advisory Committee

6. **UNFINISHED BUSINESS**

- Orange County Ambulance Ordinance

7. **NEW BUSINESS**

- Emergency Ground BLS Ambulance Rates
- Advanced Life Support Change: Anaheim Fire and Rescue
- Policy Updates

(Attachment #5)

(Attachment #6)

(Attachment #7)

8. **MEMBER COMMENTS**

9. **PUBLIC FORUM**

At this time, members of the public may address the Chairman regarding any items within the subject matter of this advisory committee's authority provided that NO action may be taken on off-agenda items unless authorized by law. Comments are limited to three minutes per person unless different time limits are set by the Chairman; subject to the approval of the Committee

10. **NEXT MEETING**

- Friday, October 8, 2021 at 9:00 a.m., *(location to be determined)*

11. **ADJOURNMENT**



EMERGENCY MEDICAL CARE COMMITTEE



REGULAR MEETING

Friday,
April 9, 2021 – 9:00 a.m.

Location: Via Zoom

M I N U T E S

MEMBERSHIP / ATTENDANCE			
<u>MEMBERS</u>	<u>REPRESENTING</u>	<u>HEALTH CARE AGENCY STAFF</u>	
Michael S. Ritter, MD (exc) Arturo Pedroza Vacant Timothy Munzing, MD Luis Estevez (exc) Ted Heyming, MD Robert Viera Rebecca Gomez Karen Sharp, RN Trez Gutierrez, RN Chief Adam Loeser David Gibbs, MD Michael Killebrew Chief Stu Greenberg	– Orange County Medical Assn. (SOCEP) – Board of Supervisors-First District – Board of Supervisors-Second District – Board of Supervisors-Third District – Board of Supervisors-Fourth District – Board of Supervisors-Fifth District – Ambulance Assn. of Orange County – City Selection Committee – Hospital Association of S. California – Orange Coast Emergency Nurses Assn. – Orange County Fire Chiefs Assn. – Orange County Medical Assn. – Orange County City Managers Assn. – Orange County Police Chiefs & Sheriffs Assn.	Carl H. Schultz, MD Gagandeep Grewal, MD Tammi McConnell, MSN Sam Stratton, MD, MPH Jesse Allured Danielle Ogaz Adrian Rodriguez Laurent Repass, NREMT-P Laura Wallin, RN Meng Chung, EMT-P David Johnson, RN Jason Azuma, NREMT-P Alison Kelman Wayne Tolosa Mike Chiles Andrew Roberts Erica Moojen Eileen Endo Lisa Wilson	– EMS Medical Director – Associate EMS Medical Director – EMS Director – EMS Physician Researcher – EMS Assistant Administrator – EMS Systems & Standards Chief – EMS Ambulance Performance Chief – EMS Information Systems Chief – ALS/CQI Coordinator – BLS Coordinator – Facilities Coordinator – OC-MEDS Coordinator – Cities Readiness Coordinator – Program Super. II, Training & Exercises – Program Super. II, Communications – EMS Specialist – EMS Office Supervisor – Office Specialist – Information Processing Technician
GUESTS PRESENT			
Whitney Ayers Dave Barry, EMT-P Randy Black Laura Cross, RN Chad Druten Brice Girdley, RN Robert Granata, MD Larry Grihalva, MICP Gloria Guerra, RN Janet Hewson, RN Bryan Johnson, RN	– Hospital Association of S. California – Anaheim Fire and Rescue – Orange County Fire Authority – Mission Hospital – Emergency Ambulance Service – Lynch Ambulance Service – Orange County Global Medical Center – Costa Mesa Fire Department – St. Jude Medical Center – Fountain Valley Hospital – Orange City Fire Department	Walt Lynch Julie Mackie, RN Nichole Miller, RN Kim Nichols, RN Maryle Olivier, RN Teresa Polinski Patrick Powers, EMT-P Rhonda Rosati, RN Lynette Salerno Michael Tou Jacob Wagoner Bill Weston	– Lynch Ambulance Service – Mission Hospital – Mission Hospital – Placentia-Linda Hospital – UCI Medical Center – – City of Placentia – Brea/Fullerton Fire Department – – Providence St. Joseph – Lynch Ambulance Service – Care Ambulance Service

I. CALL TO ORDER

The meeting was called to order by the Vice Chair, Trez Gutierrez.

II. INTRODUCTIONS/ANNOUNCEMENTS

Trez Gutierrez announced the addition of Rebecca (Beckie) Gomez as the new representative from the City Selection Committee.

Tammi McConnell announced the addition of Laura Wallin, RN, who is the new ALS/CQI Coordinator who succeeds Vicki Sweet who retired in November.

III. APPROVAL OF MINUTES

Minutes from the January 15, 2021 meeting were approved as submitted.

IV. OCEMS REPORT

- **Medical Director's Report**

Dr. Schultz reported that revisions to Orange County's policies and procedures which became effective on April 1, 2021 are now posted to the OCEMS Website. In addition, the Health Care Agency and its programs are updating their websites.

- **Orange County EMS Report**

Ms. McConnell reported that Orange County EMS staff time have been dedicated to the Health Care Agency Operations Center in managing COVID-19 requests as well as staffing a mobile vaccination POD weekly.

- **Health Emergency Management Report**

Danielle Ogaz presented the Health Emergency Management Report which included the addition of new staff, the dismantling of the Western Shelters, and the upcoming Health Care Coalition of Orange County meetings.

- **Hospital Diversion Report (January 1 to March 31, 2021)**

Attached to the agenda is the Hospital Diversion Report for the period of January 1 to March 31, 2021. Mr. Johnson reported that a "no diversion" directive was issued when 20/25 facilities were on diversion. He also presented reports on the other categories of diversion.

- **Ambulance Patient Off-Load Time (APOT) Report**

Attached to the agenda is the Ambulance Patient Off-Load Time (APOT) Report for the period of January 1 to March 31, 2021. Mr. Repass reported that Orange County EMS has been collecting aggregate APOT data on a monthly basis. Jason Azuma introduced Committee members to the new APOT dashboard.

- **EMCC Correspondence**

Attached to the agenda is a letter announcing the addition of Laura Wallin, RN as the new ALS/CQI Coordinator.

V. EMCC ADVISORY SUBCOMMITTEE AND ADVISORY GROUP REPORTS

- **Facilities Advisory Committee (March 9, 2021 meeting)**

Dr. Schultz reported on the items discussed at the Facilities included the standardization of APOT times, and the implementation of the new policies effective April 1, 2021.

- **County Paramedic Advisory Committee (March 10, 2021 meeting)**

Dr. Schultz reported that this Committee discussed many of the items announced year including APOT times, and the implementation of the new policies effective April 1, 2021.

- **Transportation Advisory Committee (April 7, 2021)**

No report.

VI. UNFINISHED BUSINESS

- **Orange County Ambulance Ordinance**

Tammi McConnell presented a history of the development and changes that Orange County EMS intends to make on the ambulance ordinance.

VII. NEW BUSINESS

- **Orange County EMS Fee Study**

Ms. McConnell reported on the outcome of the previous fee study, which included the proposed new fees to be charged involving the hospital that went before the Board of Supervisors in 2017. The outcome of that agenda item resulted in no new fees for hospital designations. A new fee study will be prepared and any increases to the fees will be submitted to the Board of Supervisors in the fall.

III. MEMBER COMMENTS

No member comments were received.

IX. PUBLIC FORUM

No public comments from members were received.

X. NEXT MEETING

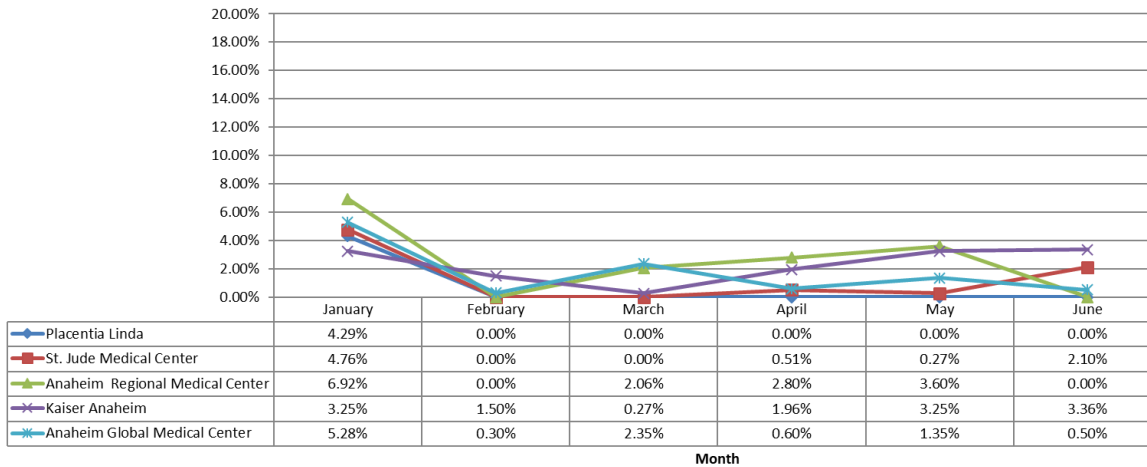
The next meeting is scheduled for Friday, July 9, 2021 at 9:00 a.m. Due to the current pandemic, the meeting may be held via Zoom videoconferencing.



**Orange County
Emergency Medical Services
Diversion Report
January 1 to June 31, 2021**

Emergency Receiving Center Diversion- Percent of Time

North Area- 2021 - ERC Diversion



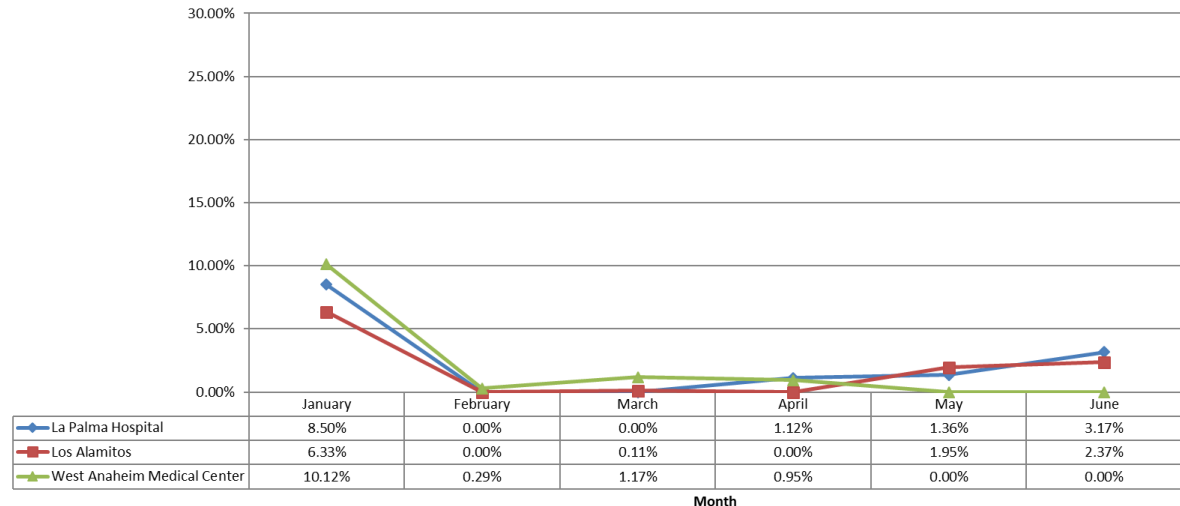
North Area Includes:

- Placentia Linda Hospital
- St. Jude Medical Center
- Anaheim Regional Medical Center
- Kaiser Anaheim
- Anaheim Global Medical Center

West Area Includes:

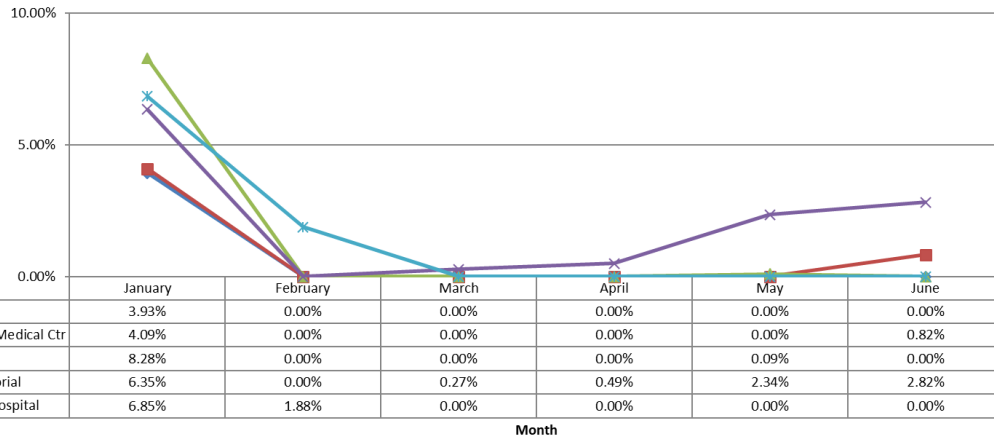
- La Palma Hospital
- Los Alamitos Medical Center
- West Anaheim Medical Center

West Area - 2021 - ERC Diversion



Emergency Receiving Center Diversion- Percent of Time

Coastal Area- 2021 - ERC Diversion



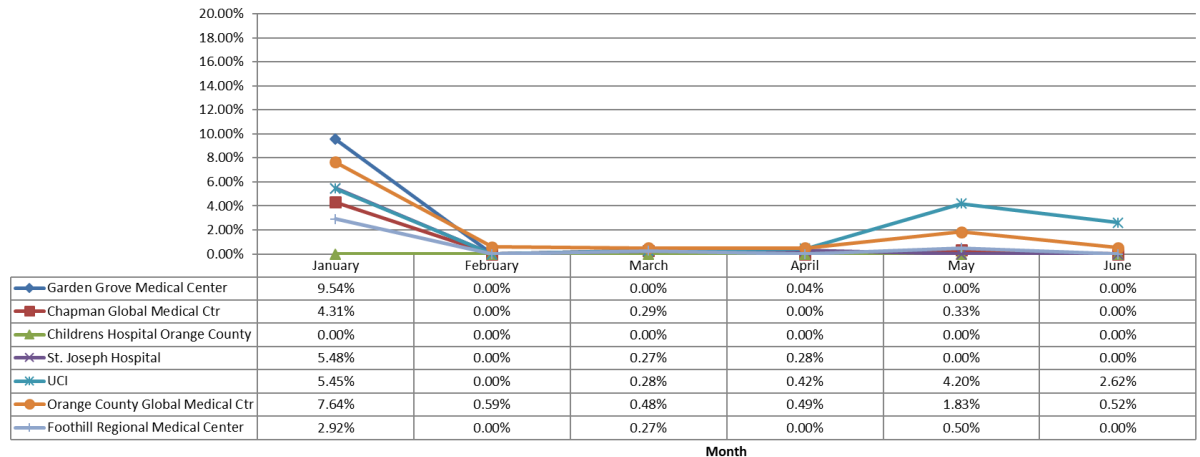
Coastal Area Includes:

- Hoag Hospital Newport Beach
- South Coastal Global Medical Center
- Fountain Valley Hospital
- Orange Coast Memorial Medical Center
- Huntington Beach Hospital

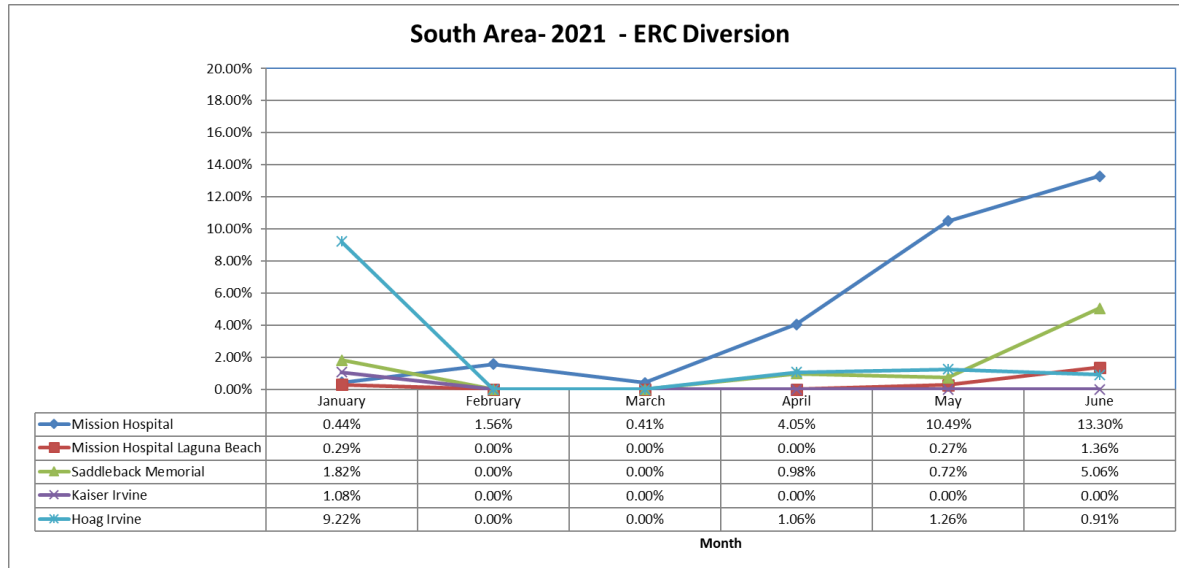
Central Area Includes:

- Garden Grove Medical Center
- Chapman Global Medical Center
- Children's Hospital Orange County
- St. Joseph Hospital
- UCI
- Orange County Global Medical Center
- Foothill Regional Medical Center

Central Area- 2021 - ERC Diversion

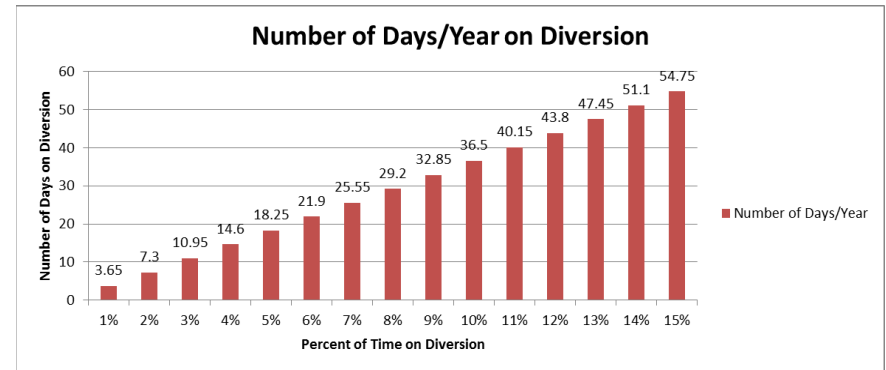
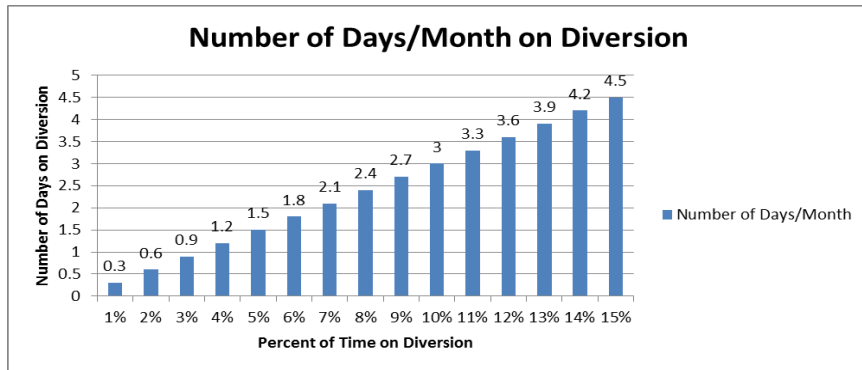


Emergency Receiving Center Diversion- Percent of Time



South Area Includes:

- Mission Hospital – Mission Viejo
- Mission Hospital – Laguna Beach
- Saddleback Memorial Medical Center
- Laguna Hills
- Kaiser Hospital – Irvine
- Hoag Hospital - Irvine



The two charts above demonstrate the monthly and annual impact of diversion represented as a total number of days an ERC would not receive patients given the percent of time of diversion.

Note: Number of days/month based on 30 days in a month

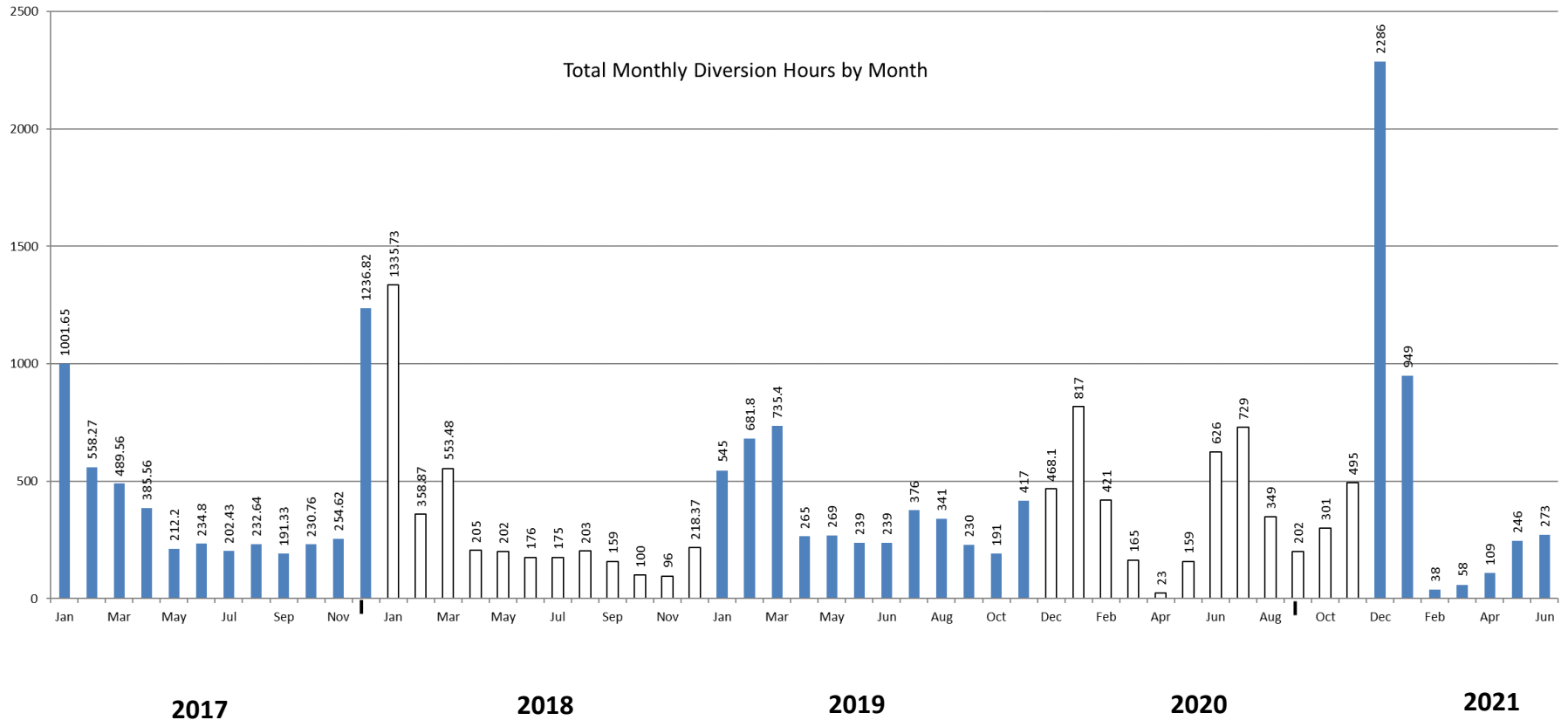
Emergency Receiving Center Diversion- Total Hours

Emergency Receiving Center Diversion Hours 2021						
	Jan	Feb	Mar	Apr	May	Jun
Anaheim Global Medical Ctr	39.00	2.00	17.00	4.00	10.00	3.00
Anaheim Regional Med Ctr	51.00	0.00	15.00	20.00	26.00	0.00
Chapman Global Medical Ctr	32.00	0.00	2.00	0.00	2.00	0.00
CHOC	0.00	0.00	0.00	0.00	0.00	0.00
Foothill Regional Medical Ctr	21.00	0.00	2.00	0.00	3.00	0.00
Fountain Valley	61.00	0.00	0.00	0.00	0.00	0.00
Garden Grove Hospital	71.00	0.00	0.00	0.00	0.00	0.00
Hoag Hospital Irvine	68.00	0.00	0.00	7.00	9.00	6.00
Hoag Newport	29.00	0.00	0.00	0.00	0.00	0.00
Huntington Beach	50.00	12.00	0.00	0.00	0.00	0.00
Kaiser Anaheim	24.00	10.00	2.00	14.00	24.00	24.00
Kaiser Irvine	8.00	0.00	0.00	0.00	0.00	0.00
La Palma Intercommunity	63.00	0.00	0.00	8.00	10.00	22.00
Los Alamitos	47.00	0.00	0.00	0.00	14.00	17.00
Mission Hospital Laguna	2.00	0.00	0.00	0.00	2.00	9.00
Mission Hospital Mission	3.00	10.00	3.00	29.00	78.00	95.00
Orange Coast Memorial	47.00	0.00	2.00	3.00	17.00	20.00
Orange County Global Med	56.00	3.00	3.00	3.00	13.00	3.00
Placentia Linda Hospital	31.00	0.00	0.00	0.00	0.00	0.00
Saddleback Memorial	13.00	0.00	0.00	7.00	5.00	36.00
South Coast Global	30.00	0.00	0.00	0.00	0.00	5.00
St Joseph	40.00	0.00	2.00	2.00	0.00	0.00
St. Jude Medical Ctr	35.00	0.00	0.00	3.00	2.00	15.00
UCI	40.00	0.00	2.00	3.00	31.00	18.00
West Anaheim Medical Ctr	75.00	1.00	8.00	6.00	0.00	0.00
Total	936.00	38.00	58.00	109.00	246.00	273.00

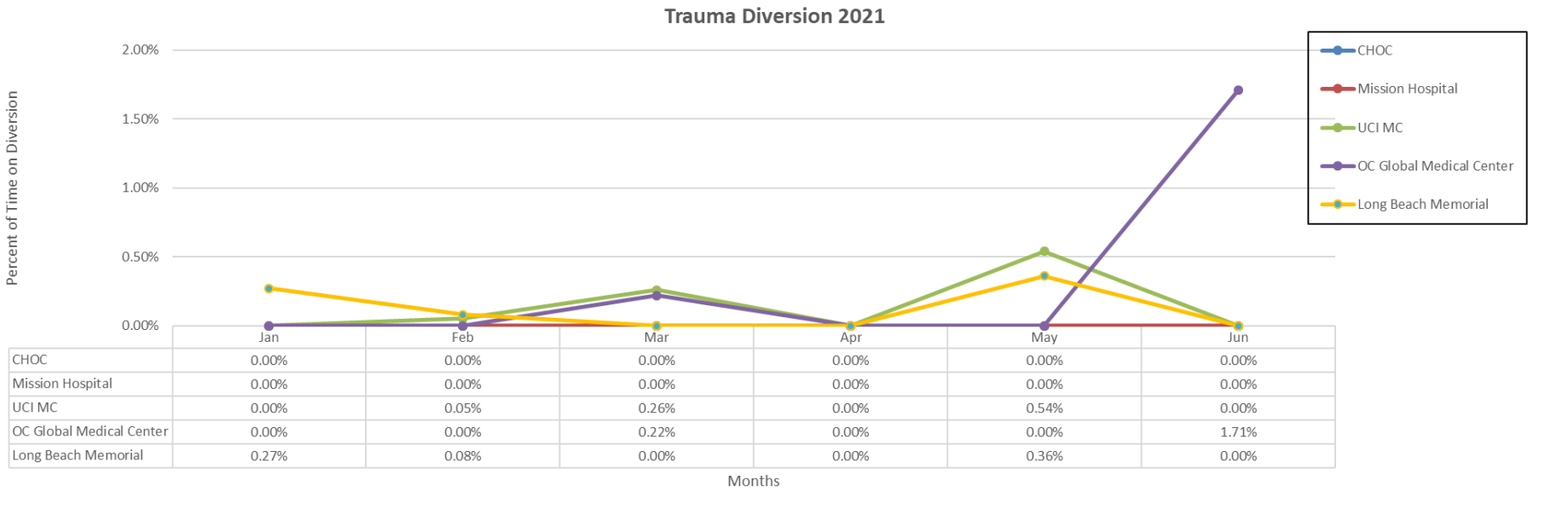


** Highlighted in Red=Diversion >6%

Emergency Receiving Center Diversion 2017 - 2021



Trauma Receiving Center Diversion- Percent of Time



Cardiovascular Receiving Center Diversion- Percent of Time

CVRC 2021						
	Jan	Feb	Mar	Apr	May	Jun
Anaheim Global Medical Ctr	0.00%	0.00%	0.00%	0.58%	1.79%	1.47%
Anaheim Regional Medical Ctr	0.00%	0.00%	0.00%	0.00%	0.00%	0.00%
Fountain Valley	0.00%	0.00%	0.00%	0.00%	0.00%	0.00%
Hoag Hospital Irvine	0.00%	0.00%	0.00%	0.00%	0.00%	0.00%
Hoag Hospital Newport	0.00%	0.00%	0.00%	0.00%	0.00%	0.00%
Los Alamitos	0.00%	0.00%	0.00%	0.00%	0.00%	0.00%
Orange Coast Memorial Med	0.00%	0.00%	0.00%	0.93%	0.20%	0.00%
Orange County Global Med	0.14%	0.08%	0.00%	0.00%	0.00%	0.00%
Mission Hospital	0.00%	0.00%	0.00%	0.00%	0.00%	0.00%
Saddleback Memorial	0.00%	0.00%	0.00%	0.00%	0.04%	0.00%
St Joseph	0.00%	0.00%	0.00%	0.00%	0.00%	0.00%
St Jude	0.00%	0.00%	0.00%	0.00%	0.00%	0.00%
UCI	0.00%	0.00%	0.00%	0.00%	0.00%	0.00%
West Anaheim Medical Ctr	0.55%	5.91%	3.16%	2.66%	17.91%	3.88%

Highlighted in Red =Diversion Any Amount



Internal Disruption Diversion- Percent of Time

INTERNAL DISRUPTION 2021						
	Jan	Feb	Mar	Apr	May	Jun
Anaheim Global Medical Ctr	0.00%	0.00%	0.00%	0.00%	0.19%	0.00%
Anaheim Regional Med Ctr	0.00%	0.00%	0.00%	0.00%	0.00%	0.00%
Chapman Global Medical Ctr	0.00%	0.00%	0.00%	0.00%	1.90%	0.00%
CHOC	0.00%	0.00%	0.00%	0.00%	0.00%	0.00%
Foothill Regional Medical Ctr	0.00%	0.00%	0.00%	0.00%	0.00%	0.00%
Fountain Valley	0.00%	0.00%	0.00%	0.00%	0.00%	0.00%
Garden Grove Hospital	0.00%	0.00%	0.00%	0.00%	0.00%	0.00%
Hoag Hospital Irvine	0.00%	0.00%	0.00%	0.00%	0.00%	0.00%
Hoag Newport	0.00%	0.00%	0.00%	0.00%	0.00%	0.28%
Huntington Beach	0.00%	0.00%	0.00%	0.00%	0.00%	0.00%
Kaiser Anaheim	0.00%	0.00%	0.00%	0.00%	0.00%	0.00%
Kaiser Irvine	0.00%	0.00%	0.00%	0.00%	0.00%	0.00%
La Palma Intercommunity	0.00%	0.00%	0.00%	0.00%	0.00%	0.00%
Los Alamitos	0.19%	0.00%	0.00%	0.00%	0.00%	0.00%
Mission Hospital Laguna	0.31%	0.00%	0.68%	0.00%	0.00%	0.00%
Mission Hospital Mission	0.00%	0.00%	0.00%	0.00%	0.00%	0.00%
Orange Coast Memorial	0.00%	0.00%	0.00%	0.00%	0.00%	0.00%
Orange County Global Med	0.00%	0.00%	0.00%	0.00%	0.00%	0.30%
Placentia Linda Hospital	0.00%	0.00%	0.00%	0.00%	0.00%	0.00%
Saddleback Memorial	0.00%	0.00%	0.00%	0.00%	0.00%	0.00%
South Coast Global	0.00%	0.00%	0.00%	0.00%	0.00%	0.00%
St Joseph	0.00%	0.00%	0.00%	0.00%	0.00%	0.00%
St. Jude Medical Ctr	0.00%	0.00%	0.00%	0.00%	0.00%	0.00%
UCI	0.00%	0.00%	0.00%	0.00%	0.00%	0.00%
West Anaheim Medical Ctr	0.00%	0.00%	0.00%	0.00%	0.00%	0.00%



Highlighted in Red = Diversion Any Amount

CT Diversion Report- Percent of Time

CT Diversion 2021						
	Jan	Feb	Mar	Apr	May	Jun
Anaheim Global Medical Ctr	0.00%	0.37%	3.90%	2.62%	12.33%	0.00%
Anaheim Regional Med Ctr	0.54%	0.00%	1.19%	0.33%	2.94%	2.11%
Chapman Global Medical Ctr	0.00%	0.00%	0.00%	0.69%	0.00%	0.00%
CHOC	0.00%	0.00%	0.00%	0.00%	0.00%	0.00%
Foothill Regional Medical Ctr	0.00%	0.00%	0.00%	1.37%	0.00%	0.29%
Fountain Valley	0.00%	0.00%	0.00%	0.00%	0.00%	0.00%
Garden Grove Hospital	0.00%	0.00%	0.00%	0.00%	0.00%	0.00%
Hoag Hospital Irvine	0.00%	0.00%	0.00%	0.23%	0.00%	0.00%
Hoag Newport	0.00%	0.00%	0.00%	0.00%	0.00%	0.00%
Huntington Beach	0.00%	0.00%	0.52%	0.00%	0.00%	0.01%
Kaiser Anaheim	0.00%	0.00%	0.00%	0.00%	0.30%	0.00%
Kaiser Irvine	0.00%	0.00%	0.00%	0.00%	0.00%	0.00%
La Palma Intercommunity	0.00%	0.00%	0.00%	0.00%	0.00%	1.16%
Los Alamitos	0.00%	0.00%	0.00%	0.00%	0.50%	0.19%
Mission Hospital Laguna	0.30%	0.00%	0.00%	0.00%	0.00%	0.00%
Mission Hospital Mission	0.00%	0.00%	0.00%	0.00%	0.00%	0.00%
Orange Coast Memorial	0.00%	0.00%	0.00%	0.00%	0.14%	0.00%
Orange County Global Med	0.05%	0.00%	0.00%	0.00%	0.00%	0.93%
Placentia Linda Hospital	0.00%	0.00%	0.00%	0.00%	0.00%	0.00%
Saddleback Memorial	0.00%	0.00%	0.00%	0.12%	0.04%	0.00%
South Coast Global	0.00%	0.00%	1.45%	0.24%	0.00%	12.36%
St Joseph	0.00%	0.00%	1.09%	0.00%	0.00%	0.00%
St. Jude Medical Ctr	0.00%	0.00%	0.00%	0.00%	0.00%	0.00%
UCI	0.00%	0.00%	0.00%	0.00%	0.00%	0.00%
West Anaheim Medical Ctr	0.85%	0.38%	0.00%	0.00%	0.00%	0.10%



Highlighted in Red =Diversion Any Amount

Neuro Diversion Report- Percent of Time

Neuro Diversion 2021						
	Jan	Feb	Mar	Apr	May	Jun
Anaheim Global Medical Ctr	0.00%	0.00%	0.00%	0.00%	0.00%	0.00%
Anaheim Regional Med Ctr	0.00%	0.00%	0.00%	0.00%	0.00%	0.00%
Chapman Global Medical Ctr	0.00%	0.00%	0.00%	0.00%	0.00%	0.00%
CHOC	0.00%	0.00%	0.00%	0.00%	0.00%	0.00%
Foothill Regional Medical Ctr	0.00%	0.00%	0.00%	0.00%	0.00%	0.00%
Fountain Valley	0.00%	0.00%	0.00%	0.00%	0.00%	0.06%
Garden Grove Hospital	0.00%	0.00%	0.00%	0.00%	0.00%	0.00%
Hoag Hospital Irvine	0.00%	0.00%	0.00%	0.00%	0.00%	0.00%
Hoag Newport	0.00%	0.00%	0.00%	0.00%	0.00%	0.00%
Huntington Beach	0.00%	0.00%	0.00%	0.00%	0.00%	0.00%
Kaiser Anaheim	0.00%	0.00%	0.00%	0.00%	0.00%	0.00%
Kaiser Irvine	0.00%	0.00%	0.00%	0.00%	0.00%	0.00%
La Palma Intercommunity	0.00%	0.00%	0.00%	0.00%	0.00%	0.00%
Los Alamitos	0.00%	0.00%	0.00%	0.00%	0.36%	0.59%
Mission Hospital Laguna	0.00%	0.00%	0.00%	0.00%	0.00%	0.00%
Mission Hospital Mission	0.00%	0.00%	0.00%	0.00%	1.59%	0.90%
Orange Coast Memorial	0.00%	0.00%	0.00%	0.00%	0.00%	0.00%
Orange County Global Med	0.00%	0.00%	0.00%	0.00%	0.00%	0.17%
Placentia Linda Hospital	0.00%	0.00%	0.00%	0.00%	0.00%	0.00%
Saddleback Memorial	0.00%	0.00%	0.00%	0.00%	3.36%	0.97%
South Coast Global	0.00%	0.00%	0.00%	0.00%	0.00%	0.00%
St Joseph	0.00%	0.00%	0.00%	0.00%	0.00%	0.00%
St. Jude Medical Ctr	0.00%	0.00%	0.00%	0.00%	0.00%	0.00%
UCI	0.00%	0.00%	0.00%	0.00%	0.00%	0.00%
West Anaheim Medical Ctr	0.00%	0.00%	0.00%	0.00%	0.00%	0.00%



Highlighted in Red =Diversion Any Amount

County of Orange
Health Care Agency
Emergency Medical Services

Ambulance Patient Offload Time (APOT-1)
March Report 2021

Hospital	2021 Totals			March 2021				
	Transports	90th Percentile APOT Time (Min:Sec)	Diversion Hours	Transports	90th Percentile APOT Time (Min:Sec)	Mean APOT Time (Min:Sec)	Median APOT Time (Min:Sec)	Diversion Hours
Anaheim Global Medical Center	610	37:07	59	222	29:43	14:43	8:06	18
Anaheim Regional Medical Center	1,165	37:53	67	430	33:55	17:10	12:50	15
Chapman Global Medical Center	182	12:16	34	54	10:02	5:45	4:02	2
Children's Hospital of Orange County	478	14:07	0	161	13:31	6:56	6:01	0
Foothill Regional Medical Center	299	54:13	24	98	36:13	16:15	7:46	2
Fountain Valley Reg Hosp and MC	1,821	26:32	62	581	20:46	10:48	7:58	0
Garden Grove Hosp and MC	1,035	31:08	72	334	21:51	11:43	9:04	0
Hoag Hospital Irvine	1,628	15:51	69	585	15:08	8:05	6:42	0
Hoag Memorial Hosp Presbyterian	4,292	15:50	29	1,485	14:42	8:47	8:12	0
Huntington Beach Hospital	955	36:23	64	308	19:22	11:05	8:28	0
Kaiser Permanente - Anaheim MC	1,236	33:15	36	383	27:45	14:24	10:40	2
Kaiser Permanente - Irvine MC	1,089	25:35	8	336	22:30	12:48	10:44	0
La Palma Intercommunity Hospital	581	24:43	63	210	24:46	13:32	4:15	0
Los Alamitos Medical Center	1,745	50:43	48	573	46:29	23:58	15:47	1
Mission Hospital - Laguna Beach	760	25:36	2	219	22:22	13:27	10:55	0
Mission Hospital Regional MC	3,492	26:53	17	1,173	25:37	12:55	10:04	3
Orange Coast Memorial MC	1,273	32:59	51	410	20:45	13:02	11:56	2
Orange County Global MC	1,706	25:33	64	620	20:34	10:55	7:00	4
Placentia Linda Hospital	1,031	23:55	32	322	15:03	8:07	6:35	0
Saddleback Memorial MC	2,115	19:19	14	751	18:16	10:32	9:19	0
South Coast Global Medical Center	538	28:11	30	159	17:14	8:59	6:58	0
St. Joseph Hospital	2,669	24:32	43	868	20:44	11:16	7:47	2
St. Jude Medical Center	3,348	33:24	35	1,120	27:27	14:38	10:46	0
UCI Medical Center	2,713	32:02	43	948	30:13	12:13	6:30	2
West Anaheim Medical Center	1,616	39:05	87	594	26:39	14:47	12:05	9

Median Hospital 90th Percentile APOT Time 26:53 21:51
InterQuartile Range 25:35, 40:22 18:33, 30:29

OC EMS System Total (Aggregate)	38,377	28:42	12,944	24:07	Diversion Hours	61
OC EMS System Mean APOT Time	14:22			12:18	Diversion Days	18 of 31
Standard Deviation	+/- 16:24			+/- 12:03	Hospitals/Day Range	0-3/day
OC EMS System Median APOT Time	10:00			09:13	Incidents w/ APOT 30-60min	644
InterQuartile Range	5:43, 16:45			5:15, 15:02	Incidents w/ APOT >60min	151

County of Orange
Health Care Agency
Emergency Medical Services

Ambulance Patient Offload Time (APOT-1)
April Report 2021

Hospital	2021 Totals			April 2021				
	90th Percentile APOT Time	Mean APOT Time	Median APOT Time	90th Percentile APOT Time	Mean APOT Time	Median APOT Time	Diversion Hours	
	Transports (Min:Sec)	Transports (Min:Sec)	Transports (Min:Sec)	Transports (Min:Sec)	Transports (Min:Sec)	Transports (Min:Sec)	Hours	
Anaheim Global Medical Center	844	35:43	63	234	31:38	14:11	10:00	4
Anaheim Regional Medical Center	1,585	38:21	87	420	41:21	19:11	13:05	20
Chapman Global Medical Center	223	11:50	34	41	6:53	5:38	4:16	0
Children's Hospital of Orange County	698	14:35	0	220	15:13	7:32	5:32	0
Foothill Regional Medical Center	371	41:28	24	72	23:20	11:19	6:43	0
Fountain Valley Reg Hosp and MC	2,416	24:42	62	595	19:24	10:46	8:46	0
Garden Grove Hosp and MC	1,301	27:41	72	266	19:48	11:28	8:50	0
Hoag Hospital Irvine	2,222	15:57	76	594	16:02	8:42	6:59	8
Hoag Memorial Hosp Presbyterian	5,821	15:25	29	1,529	14:23	8:51	8:23	0
Huntington Beach Hospital	1,261	35:07	64	306	34:58	16:02	10:22	0
Kaiser Permanente - Anaheim MC	1,634	32:00	50	398	27:41	14:25	10:37	14
Kaiser Permanente - Irvine MC	1,424	24:48	8	335	22:35	13:16	11:36	0
La Palma Intercommunity Hospital	779	22:17	71	198	19:42	12:38	0:01	8
Los Alamitos Medical Center	2,273	47:26	48	528	36:49	19:42	14:23	0
Mission Hospital - Laguna Beach	1,029	25:42	2	269	25:57	14:19	10:13	0
Mission Hospital Regional MC	4,620	27:25	46	1,128	29:09	14:40	11:21	29
Orange Coast Memorial MC	1,734	28:56	55	461	22:53	13:24	11:47	4
Orange County Global MC	2,328	23:50	68	622	19:29	10:06	6:58	4
Placentia Linda Hospital	1,358	19:28	32	327	12:52	7:42	6:14	0
Saddleback Memorial MC	2,865	19:05	21	750	18:14	10:29	8:41	7
South Coast Global Medical Center	703	23:09	30	165	17:10	8:45	6:35	0
St. Joseph Hospital	3,609	23:33	45	941	21:45	11:34	8:08	2
St. Jude Medical Center	4,511	34:02	39	1,163	35:18	17:47	12:17	4
UCI Medical Center	3,701	31:21	46	988	29:23	12:39	7:00	3
West Anaheim Medical Center	2,247	36:47	93	631	28:41	15:34	11:56	7

Median Hospital 90th Percentile APOT Time 25:42 22:35
InterQuartile Range 25:35, 40:22 18:33, 30:29

OC EMS System Total (Aggregate)	51,557	27:46	13,181	25:26	Diversion Hours	113
OCEMS System Mean APOT Time	13:56			12:44	Diversion Days	22 of 30
Standard Deviation	+/- 15:32			+/- 12:37	Hospitals/Day Range	0-4/day
OCEMS System Median APOT Time	09:55			09:30	Incidents w/ APOT 30-60min	720
InterQuartile Range	5:37, 16:25			5:24, 15:31	Incidents w/ APOT >60min	162

County of Orange
Health Care Agency
Emergency Medical Services

Ambulance Patient Offload Time (APOT-1)
June Report 2021

Hospital	2021 Totals			June 2021				
	90th Percentile APOT Time	Mean APOT Time	Median APOT Time	Transports	90th Percentile APOT Time (Min:Sec)	Mean APOT Time (Min:Sec)	Median APOT Time (Min:Sec)	Diversion Hours
Anaheim Global Medical Center	1,331	32:52	77	259	29:55	13:35	8:33	4
Anaheim Regional Medical Center	2,360	38:23	114	408	36:09	17:43	12:30	0
Chapman Global Medical Center	332	10:37	37	62	8:51	9:10	4:01	0
Children's Hospital of Orange County	1,181	14:02	0	247	12:44	7:13	6:00	0
Foothill Regional Medical Center	547	36:11	27	75	18:53	11:55	9:26	0
Fountain Valley Reg Hosp and MC	3,751	23:54	62	670	22:27	11:28	8:44	0
Garden Grove Hosp and MC	1,947	24:00	72	331	18:04	11:04	8:33	0
Hoag Hospital Irvine	3,487	16:05	92	667	16:52	8:47	7:04	7
Hoag Memorial Hosp Presbyterian	8,998	15:10	29	1,575	15:20	9:08	8:19	0
Huntington Beach Hospital	1,966	31:27	64	358	23:25	12:19	8:56	0
Kaiser Permanente - Anaheim MC	2,431	30:53	99	372	31:41	17:02	12:37	24
Kaiser Permanente - Irvine MC	2,171	24:38	8	388	29:31	15:27	12:14	0
La Palma Intercommunity Hospital	1,200	21:08	104	232	23:55	14:22	0:01	23
Los Alamitos Medical Center	3,351	41:42	79	537	30:15	16:10	12:02	17
Mission Hospital - Laguna Beach	1,599	27:55	14	283	38:25	19:26	12:51	10
Mission Hospital Regional MC	6,838	29:00	220	1,057	32:15	16:49	13:05	96
Orange Coast Memorial MC	2,591	26:42	92	397	19:50	12:12	10:14	20
Orange County Global MC	3,605	21:44	85	638	19:48	9:47	7:09	4
Placentia Linda Hospital	2,014	17:43	32	342	14:28	8:20	6:44	0
Saddleback Memorial MC	4,389	19:06	62	770	19:38	10:58	8:59	36
South Coast Global Medical Center	1,033	20:39	36	161	15:50	9:09	7:02	6
St. Joseph Hospital	5,342	23:06	45	879	20:47	11:05	8:07	0
St. Jude Medical Center	6,848	35:11	54	1,170	32:49	17:37	11:51	15
UCI Medical Center	5,804	32:31	96	1,026	33:27	13:41	6:25	19
West Anaheim Medical Center	3,567	32:29	93	672	26:32	13:55	11:00	0

Median Hospital 90th Percentile APOT Time 24:38 22:27
InterQuartile Range 25:35, 40:22 18:33, 30:29

OC EMS System Total (Aggregate)	78,683	27:00	13,576	25:35	Diversion Hours	280
OCEMS System Mean APOT Time	13:36			12:50	Diversion Days	28 of 30
Standard Deviation	+/- 14:51			+/- 13:17	Hospitals/Day Range	0-7/day
OCEMS System Median APOT Time	09:45			09:26	Incidents w/ APOT 30-60min	784
InterQuartile Range	5:34, 16:05			5:26, 15:30	Incidents w/ APOT >60min	170



CLAYTON CHAU, MD, PhD
DIRECTOR/COUNTY HEALTH
OFFICER

STEVE THRONSON
DEPUTY AGENCY DIRECTOR
MEDICAL HEALTH SERVICES

TAMMI McCONNELL MSN, RN
DIVISION DIRECTOR
EMERGENCY MEDICAL SERVICES

405 W FIFTH STREET, SUITE 301A
SANTA ANA, CALIFORNIA 92701
TELEPHONE: 714- 834-2791
FAX: 714- 834-3125
Email: TMcConnell@ochca.com

MEDICAL HEALTH SERVICES
EMERGENCY MEDICAL SERVICES

MEMO

DATE: June 30, 2021

TO: Emergency Receiving Centers
Base Hospital Coordinators
ERC Medical Directors
911 Providers

SUBJECT: HOAG HOSPITAL IRVINE PROVIDING OB SERVICES

Hoag Hospital Irvine is now providing basic OB services. Hoag Hospital Irvine does not have a Neonatal ICU, therefore high-risk pregnancies should be transported to the closest hospital which provides those services. Orange County EMS 911 providers can transport patients with OB emergencies to Hoag Hospital Irvine.

A handwritten signature in black ink that reads 'Carl Schultz, MD'.

Carl H. Schultz, MD
EMS Medical Director
Orange County EMS Agency

CS:lw#4036

Cc: Melanie Jordan, RN
Director of Nursing, Emergency Department and Critical Care Unit, Hoag Hospital Irvine

Emergency Medical Care Committee
 Informational Item Only
 July 9, 2021

Authority

As specified in Division 9, Title 4 of the Codified Ordinances of the County of Orange (Ambulance Ordinance 3517), the Board of Supervisors establishes the maximum Basic Life Support (BLS) emergency ground ambulance rates applicable within the County’s unincorporated area and cities that have agreed with the Ordinance for the provision of licensing and regulation of ambulance services. Ordinance 3517 also establishes the authority to adjust the maximum Advanced Life Support (ALS) Paramedic Assessment and Transport rate applicable for the Orange County Fire Authority’s (OCFA) jurisdictional areas, with the exception of three cities that establish their own ALS rate.

Orange County Emergency Medical Services (OCEMS) policy #715.00 Ground Emergency Ambulance Service Rates – Adjustment identifies the process for annual rate adjustments. On August 8, 2017, the Orange County Board of Supervisors passed Board Resolution No. 17-094 which approved the revision of the ambulance rates and adopted the recommended methodology for calculation and application of future annual adjustments. The Board authorized the Health Care Agency (HCA) to make an annual adjustment effective July 1st of each year. Data is appointed from the US Department of Labor’s Bureau of Labor Statistics (www.bls.gov) to determine the percentage from the prior year and applied to the current rate.

2021 Maximum 911 Emergency Basic Life Support Rates FY 2021-22

Due to the discontinuation of the Los Angeles-Riverside-Orange Counties “all items” CPI index by the US Department of Labor’s Bureau of Labor Statistics in 2018, the Health Care Agency currently uses the Los Angeles-Long Beach-Anaheim “all items” CPI index to adjust the rates for mileage, oxygen, standby, and medical supplies for 2019 and thereafter. The emergency base rate continues to be adjusted using the percentage adjustment of State or Federal minimum wage increases. The Ambulance Association of Orange County agreed to the change of the new CPI method in 2019.

Description	2020 Rate	Effects of Minimum Wage ¹	CPI % change	\$ increase	2021 Rates (effective 7/1/21)
Emergency Base Rate	\$1,197.91	7.7%		\$92.24	\$1,290.15
Mileage	\$ 18.75		1.6%	\$ 0.30	\$ 19.05
Oxygen	\$ 91.93		1.6%	\$ 1.47	\$ 93.40
Standby	\$ 45.04		1.6%	\$ 0.72	\$ 45.76
Expendable Medical Supplies	\$ 36.29		1.6%	\$ 0.58	\$ 36.87

¹Effects of Minimum Wage

²CPI (Los Angeles-Long Beach-Anaheim “all items”)

New Minimum Wage Phase in Requirement 2017-2023
SB 3 (Leno, Chapter 4, Statutes of 2016)

Date	Minimum Wage for Employers with 26 Employees or More	Percentage Increase in Minimum Wage
January 1, 2017	\$10.50/hour	
January 1, 2018	\$11.00/hour	
January 1, 2019	\$12.00/hour	
January 1, 2020	\$13.00/hour	
January 1, 2021	\$14.00/hour	7.7%
January 1, 2022	\$15.00/hour	7.1%

$$\frac{\$14.00 - \$13.00}{\$13.00} = \frac{\$1}{\$13.00} = .0769 \text{ or } 7.7\%$$

Databases, Tables & Calculators by Subject

Data extracted on: June 2, 2021 (11:39:55 AM)

CPI for All Urban Consumers (CPI-U)

Series Id: CUURS49ASA0,CUUSS49ASA0
Not Seasonally Adjusted
Series Title: All items in Los Angeles-Long Beach-Anaheim, CA, all urban consumers, not seasonally adjusted
Area: Los Angeles-Long Beach-Anaheim, CA
Item: All items
Base Period: 1982-84=100



Year	Jan	Feb	Mar	Apr	May	Jun	Jul	Aug	Sep	Oct	Nov	Dec	Annual	HALF1	HALF2
2011	228.652	229.729	232.241	233.319	233.367	232.328	231.303	231.833	233.022	233.049	232.731	231.567	231.928	231.606	232.251
2012	233.441	234.537	236.941	236.866	237.032	236.025	235.776	237.222	238.104	240.111	237.675	236.042	236.648	235.807	237.488
2013	238.015	239.753	239.995	239.043	239.346	239.223	238.920	239.219	239.611	239.940	238.677	238.742	239.207	239.229	239.185
2014	239.857	241.059	242.491	242.437	243.362	243.528	243.727	243.556	243.623	243.341	241.753	240.475	242.434	242.122	242.746
2015	239.724	241.297	243.738	243.569	246.093	245.459	247.066	246.328	245.431	245.812	245.711	245.357	244.632	243.313	245.951
2016	247.155	247.113	247.873	248.368	249.554	249.789	249.784	249.700	250.145	251.098	250.185	250.189	249.246	248.309	250.184
2017	252.373	253.815	254.525	254.971	255.674	255.275	256.023	256.739	257.890	258.883	259.135	259.220	256.210	254.439	257.982
2018	261.235	263.012	264.158	265.095	266.148	265.522	266.007	266.665	268.032	269.482	268.560	267.631	265.962	264.195	267.730
2019	269.468	269.608	271.311	273.945	274.479	274.380	274.682	274.579	276.054	278.075	277.239	275.553	274.114	272.199	276.030
2020	277.755	278.657	276.589	275.853	276.842	278.121	279.899	280.116	279.366	279.947	280.102	279.560	278.567	277.303	279.832
2021	280.178	281.347	282.648	285.808											



Source: https://data.bls.gov/pdq/SurveyOutputServlet?data_tool=dropmap&series_id=CUURS49ASA0,CUUSS49ASA0

$$\frac{278.567 - 274.114}{274.114} = \frac{4.453}{274.114} = .0162 \text{ or } 1.6\%$$



City of Anaheim Anaheim Fire & Rescue



April 30, 2021

Carl Schulz, MD
Medical Director
Orange County Emergency Medical Services
405 W. 5th Street, Suite 301
Santa Ana, CA 92701

Subject: ALS Unit Change

This letter serves to officially notify OCEMS of changes to the 911 ALS Paramedic coverage in the City of Anaheim starting April 30, 2021.

Anaheim Fire & Rescue is putting into service Anaheim Engine 12 in the City of Anaheim. The unit will eventually fill the growing area surrounding Anaheim Stadium and the Platinum Triangle. During the building of the station the Unit will be staffed as an ALS unit with a minimum of two Paramedics and will be housed at Fire Station 10. Below, each item in Policy 705.00 are addressed. Additionally, Anaheim Fire has contact OCC and UCI Base and informed them of the additional unit.

OCEMS Policy #705.00

- A. N/A
- B. AE12 will be located in the Anaheim Hills area of Anaheim for approximately one year and then moved to the Anaheim Resort area in the Platinum Triangle.
- C. N/A
- D. N/A
- E. The Fire Engine / ALS Unit will go into service on April 30, 2021.
- F. Anaheim Fire will continue to utilize and maintain telecommunications as specified by OCEMS.
- G. Anaheim Fire will maintain all drug and solution inventory and basic and ALS medical equipment and supplies as specified by OCEMS.
- H. Training will be maintained for meeting the two Paramedic per ALS unit standard.

Please feel free to contact me with any questions.

Respectfully,

Dave Barry
Anaheim Fire & Rescue
EMS Manager / EMS Director



CLAYTON CHAU, MD PhD
DIRECTOR/COUNTY HEALTH
OFFICER

STEVE THRONSON
DEPUTY AGENCY DIRECTOR
MEDICAL HEALTH SERVICES

TAMMI McCONNELL
DIVISION DIRECTOR
EMERGENCY MEDICAL SERVICES

405 W. 5th STREET, SUITE 301-A
SANTA ANA, CA 92701

PHONE: 714-834-2791

FAX: 714-834-3125

Email: TMcConnell@ochca.com

**MEDICAL HEALTH SERVICES
EMERGENCY MEDICAL SERVICES**

DATE: JUNE 29, 2021

TO: BASE HOSPITAL COORDINATORS
ERC MEDICAL DIRECTORS
FIRE EMS COORDINATORS/MANAGERS
IFT-ALS NURSE COORDINATORS
PARAMEDIC TRAINING CENTERS

A handwritten signature in blue ink, appearing to read "CHS", is written over the "TO:" list.

FROM: CARL H. SCHULTZ, MD
ORANGE COUNTY EMS MEDICAL DIRECTOR

SUBJECT: NEW POLICIES AND CLARIFICATIONS/UPDATES OF EXISTING EMS
DOCUMENTS

The Orange County EMS Agency reviews, updates, and makes additions to its policies, procedures, and standing orders on a biannual basis. From time to time, it may also need to engage in these activities on an impromptu basis as such actions can't wait until the next cycle. This is one of those times.

In addition to clarifications and updates made to the documents listed below, we are also issuing a new document, Policy #300.50, to replace the current data reporting policy, #391.10. We are also deleting Policy #300.32 as its contents are now incorporated into #300.30. A brief description adjacent to each document identifier summarizes the changes made. They will be posted to the website in the next few days. Given the changes to the 600 policies are administrative and not substantive, they will not require public comment. Please see our website at <https://www.ochealthinfo.com/ems> for the newly edited versions and new document.

DOCUMENTS GOING INTO EFFECT JULY 1 (#240.30 ON JULY 14)

POLICY

- | | |
|--------|---|
| 200.00 | <u>Licensed EMS Medical Transportation Providers.</u> Deleted several BLS ambulance providers that are no longer active in Orange County. |
| 240.30 | <u>Orange County Specialty Services:</u> Anaheim Global Medical Center is removed as a Cardiovascular Receiving Center and as a provider of obstetrical services. |

- 600.00 Emergency Receiving Center Criteria. Removed language in Section IX, DATA COLLECTION/RECORDS, paragraph E, that specified the data elements required for reporting, and moved this language to the new policy, #300.50. Added language referencing this new policy.
- 600.10 Emergency Receiving Center – Resource Listing. Made extensive language deletions throughout the document and replaced the information with website URLs that contain the same information. Updated information that could not be easily linked to websites.
- 620.00 Trauma Center (TC) Criteria. Removed language in Section X, DATA COLLECTION, paragraph C, that specified the data elements required for reporting, and moved this language to the new policy, #300.50. Added language referencing this new policy. Also added language throughout the document updating CME requirements for the various participating physician specialists as mandated by the American College of Surgeons.
- 620.01 Pediatric Trauma Center (PedTC) Criteria. Removed language in Section X, DATA COLLECTION, paragraph C, that specified the data elements required for reporting, and moved this language to the new policy, #300.50. Added language referencing this new policy. Also added language throughout the document updating CME requirements for the various participating physician specialists as mandated by the American College of Surgeons.
- 630.00 Cardiovascular Receiving Center Criteria. Removed language in Section VII, DATA COLLECTION, paragraph C, that specified the data elements required for reporting, and moved this language to the new policy, #300.50. Added language referencing this new policy.
- 650.00 Stroke-Neurology Receiving Center Criteria. Removed language in Section VII, DATA COLLECTION, paragraph C, that specified the data elements required for reporting, and moved this language to the new policy, #300.50. Added language referencing this new policy.
- 680.00 Comprehensive Children’s Emergency Receiving Center Designation Criteria. Removed language in Section XI, DATA COLLECTION, paragraph E, that specified the data elements required for reporting, and moved this language to the new policy, #300.50. Added language referencing this new policy.

BASE HOSPITAL TREATMENT GUIDELINES

- BH-M-35 Respiratory Distress (Adult/Adolescent). Clarifies IM injection of epinephrine will be into the lateral thigh.

DOCUMENTS IN EFFECT BY OCTOBER 1, 2021

POLICY

- 300.10 OC-MEDS Clinical Documentation Standards: Document reformatted and title of policy updated. Definitions added to first page. Per state requirements, now will need to create PCR for every response where a person is contacted (example: back to bed). This documentation is listed in Section V. Paramedics and EMTs need to sign each PCR they complete.
- 300.20 OC-MEDS System Management and Support: Document reformatted. Added content clarifying that both the EMS Provider Agencies (Section IV.B.3.e and f) and the Base Hospitals (Section IV.C.3.c and d) are responsible for staff education/training/evaluation and utilization of OC-MEDS for QA/QI activities.
- 300.30 OC-MEDS EMS Provider Prehospital Care Reporting & Data Submission Process: Document reformatted and title of policy updated to reflect data submission process. Definitions added to first page. Updated to be consistent with California state regulations regarding use of Electronic Health Records and requirements for Prehospital Care Report completion and data submission (Section IV.A). Also, per state requirements, now will need to create PCR for every response where a person is contacted (Section IV.B). Lastly, the information in Policy 300.32 describing the review and approval process for new providers will be transferred to this policy (Section V) and 300.32 will be deleted.
- 300.50 Emergency Receiving/Specialty Center Data Reporting Criteria. New policy. Replaces Policy #391.10. Adds significant new language clarifying specific data reporting elements required by NEMSIS, CEMSIS, and new State EMSA regulations. Continues previously required elements.
- 325.00 Advanced Life Support (ALS) Provider Unit Minimum Inventory. Moved lidocaine from the Optional Approved Pharmaceutical list to the Required Pharmaceutical Inventory list.

STANDING ORDERS (I-20 and SO-P-75 will be posted on July 14, 2021)

- I-15: Adult/Adolescent Standing Order Drug Guide. Clarified that epinephrine administered IM for Allergic Reaction is injected into the lateral thigh. Changed the dose of IM midazolam for seizure control to 10 mg (was 5 mg). Clarified that doses of nitroglycerine will be held for systolic blood pressures less than 100. Increased the dose of atropine to 1 mg for clinically significant bradycardia. Adds lidocaine indication for cardiac arrest and gives dose.

- I-20 Pediatric Medication Volume Dose by Weight: Changed the dose of IM midazolam for seizure control to 0.2 mg/kg with maximum dose of 10 mg (was 5 mg). Increased the maximum dose of atropine to 1 mg for clinically significant bradycardia. Adds lidocaine indication for cardiac arrest and gives dose.
- SO-M-040 Seizure/Convulsion – Adult/Adolescent: Increasing the IM dose of midazolam to 10 mg and designating it as the preferred route of administration. This dose is given one time only. Keeping dose at 5 mg for IV/IO/IN route. May repeat this dose one time.
- SO-P-75 Seizure/Convulsion – Pediatric: Increasing the IM dose of midazolam to 0.2 mg/kg with a maximum dose of 10 mg, and designating it as the preferred route of administration. This dose is given one time only. Keeping dose at 0.1 mg/kg with maximum dose of 5 mg for IV/IO/IN route. May repeat this dose one time.