



# ORANGE COUNTY FIRE AUTHORITY

P. O. Box 57115, Irvine, CA 92619-7115 • 1 Fire Authority Road, Irvine, CA 92602-0125

Brian Fennessy Fire Chief

(714) 573-6000

[www.ocfa.org](http://www.ocfa.org)

May 27, 2025

Carl Schultz, M.D.  
Medical Director  
Orange County Emergency Medical Services  
405 W. 5<sup>th</sup> Street, Suite 301  
Santa Ana, CA 92701

## Subject: ALS Unit Changes

Dr. Schultz,

This letter serves to officially notify OCEMS of upcoming changes to 911 ALS Paramedic coverage within Orange County Fire Authority's (OCFA) jurisdiction beginning July 1, 2025. I will provide a summary of the changes and then will address each change as per OCEMS Policy #705.00.

The OCFA hired an outside consultant to update a Standards of Coverage (SOC) study. This study looked closely at Unit Hour Utilization (UHU), response times and frequency of second calls in a roll area that caused neighboring units to be drawn into an area. Data driven recommendations were received and approved by the OCFA Board of Directors for implementation. A summary of the changes are **bolded** as follows:

### Station 7 (San Juan Capistrano)

#### Current Deployment

BLS Engine 7 (3/0 staffed)

ALS Medic 7 (2/0 staffed)

#### Future Deployment

→ **ALS Engine 7 (4/0 staffed) – Addition**

→ ALS Medic 7 (2/0 staffed)

### Station 12 (Laguna Woods) - New

#### Current Deployment

None

#### Future Deployment

→ **ALS Engine 12 (4/0 staffed) – Addition**

### Station 18 (Laguna Woods)

#### Current Deployment

PAU Engine 18 (3/0 staffed)

#### Future Deployment

→ **ALS Engine 18 (4/0 staffed) – Addition**

### Station 24 (Mission Viejo)

#### Current Deployment

ALS Engine 24 (4/0 staffed)

#### Future Deployment

→ ALS Engine 24 (4/0 staffed)

**ALS Truck 24 (4/0 staffed) - Relocation**

Serving the Cities of: Aliso Viejo • Buena Park • Cypress • Dana Point • Garden Grove • Irvine • Laguna Hills • Laguna Niguel • Laguna Woods • Lake Forest • La Palma • Los Alamitos • Mission Viejo • Rancho Santa Margarita • San Clemente • San Juan Capistrano • Santa Ana • Seal Beach • Stanton • Tustin • Villa Park • Westminster • Yorba Linda • and Unincorporated Areas of Orange County

**RESIDENTIAL SPRINKLERS AND SMOKE ALARMS SAVE LIVES**

Station 45 (Rancho Santa Margarita)

Current Deployment

BLS Engine 45 (3/0 staffed)

BLS Truck 45 (4/0 staffed)

ALS Medic 45 (2/0 staffed)

Future Deployment

ALS Engine 45 (4/0 staffed) – Reconfiguration

ALS Truck 45 (4/0 staffed) - Addition

Station 57 (Aliso Viejo)

Current Deployment

BLS Engine 57 (3/0 staffed)

ALS Medic 45 (2/0 staffed)

Future Deployment

ALS Engine 57 (4/0 staffed) – Reconfiguration

Station 46 (Stanton)

Current Deployment

PAU Engine 46 (3/0 staffed)

ALS Medic 46 (2/0 staffed)

Future Deployment

ALS Engine 46 (4/0 staffed) – Addition

ALS Medic 46 (2/0 staffed)

Station 64 (Westminster)

Current Deployment

ALS Engine 64 (4/0 staffed)

Future Deployment

ALS Engine 64 (4/0 staffed)

ALS Truck 64 (4/0 staffed) - Relocated

**OCFA STATION 7  
(San Juan Capistrano)**

Engine 7 will be upgraded from a BLS Engine to a 4-person ALS Engine consisting of 2 paramedics. The ALS upgrade will be effective July 1, 2025. Engine 7 is located at OCFA Fire Station 7 at 31865 Del Obispo, San Juan Capistrano, CA 92675

This additional ALS unit will meet all OCEMS requirements as an ALS service provider. Engine 7 will have the full OCEMS required inventory of supplies, equipment, and medications; and is equipped for communications as specified by OCEMS.

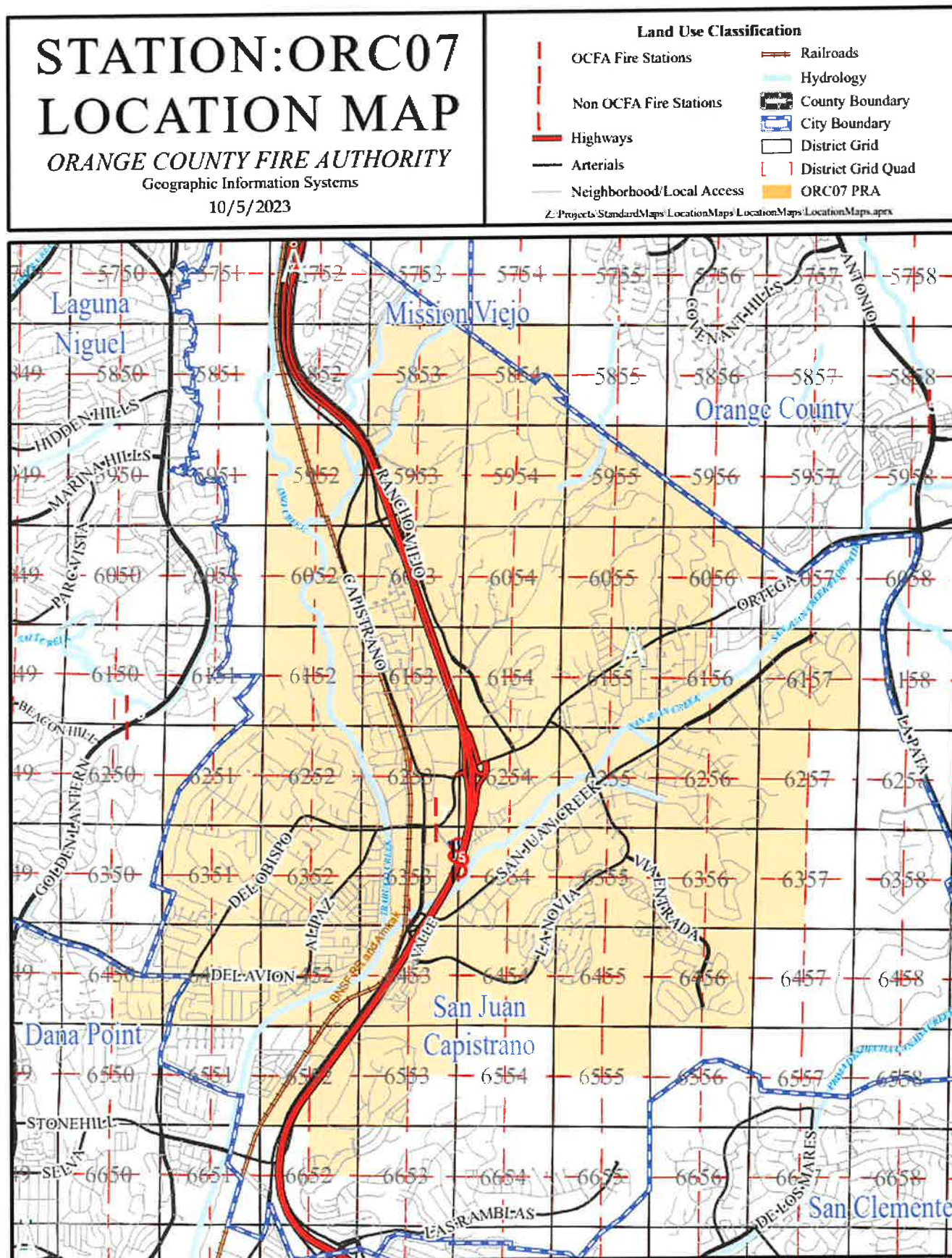
Please review the following criteria for activation and upgrades of aforementioned unit per OCEMS Policy #705.00:

- A. Justification for an additional PAU or ALS unit.
  - a. Currently, Station 7 is staffed with BLS Engine 7 and Paramedic Squad (Medic 7). Engine 7 responds to over 3,400 incidents annually. Medic 7 responds to over 2,800 incidents annually.
  - b. Continued growth in the Saddleback Valley, significant development in Rancho Mission Viejo and state mandates for local housing requirements outlined in the Statewide Housing Plan are contributing factors to the increased demand on our EMS services.
  - c. The addition of Paramedic Engine 7 to the existing Medic 7 will double our ALS capabilities for San Juan Capistrano and surrounding cities and improve the regional depth of coverage.
- B. Description of the geographical location and boundaries for the proposed service.
  - a. Engine 7: urban areas, see attached map (Attachment A)
- C. Justification for variances (if any) from the applicant's plan for adhering to the Board of Supervisors Resolution 79-240: One unit for every 64,000 population; or one unit per 16 square miles; or an average of five minutes or less response time; or adjacent units are at or above 300 total responses/month (Policy 700.00).
  - a. No variances from Board of Supervisors Resolution 79-240.
- D. A workload analysis of the impact on contiguous PAU or ALS units.
  - a. Engine 7 and Medic 7 have seen a 3% increase in call volume annually over the past 4 years.
  - b. The surrounding stations in Dana Point, Laguna Niguel and Mission Viejo have seen similar or larger growth in call volumes. Medic 7 often gets pulled into surrounding cities for ALS response because of the incident densities.
  - c. Saddleback Valley and Rancho Mission Viejo continue to get busier every year and strain the EMS system. The upgrade of Engine 7 to an ALS unit will add depth to the area and reduce Paramedic response times.
- E. Proposed time frame for implementation.
  - a. Engine 7 July 1, 2025 @ 0800
- F. Commitment to utilize and maintain telecommunications as specified by the OCEMS.
  - a. OCFA commits to utilize and maintain telecommunications as specified by OCEMS.

- G. Commitment to maintain a drug and solution inventory and basic and ALS medical equipment and supplies as specified by the OCEMS.
  - a. OCFA commits to maintain a drug and solution inventory and basic and ALS medical equipment and supplies as specified by the OCEMS.
- H. Training needs for meeting OCEMS staffing requirements of two Paramedics per ALS units.
  - a. OCFA units will continue to meet all training and staffing requirements as outlined by OCEMS.



ATTACHMENT A



**OCFA STATION 12  
(Laguna Woods)**

ALS Engine 12 will be a 4-person ALS unit consisting of 2 paramedics and will be added in the city of Laguna Woods. The ALS addition will be effective July 1, 2025. Paramedic Engine 12 will be located in a new Fire Station that has been identified in Laguna Woods. While the station is being constructed, a temporary fire station will be located near the Home Depot at 24332 El Toro Rd, Laguna Woods CA, 92637

This addition of an ALS unit will meet all OCEMS requirements as an ALS service provider. Engine 12 will have the full OCEMS required inventory of supplies, equipment, and medications; and is equipped for communications as specified by OCEMS.

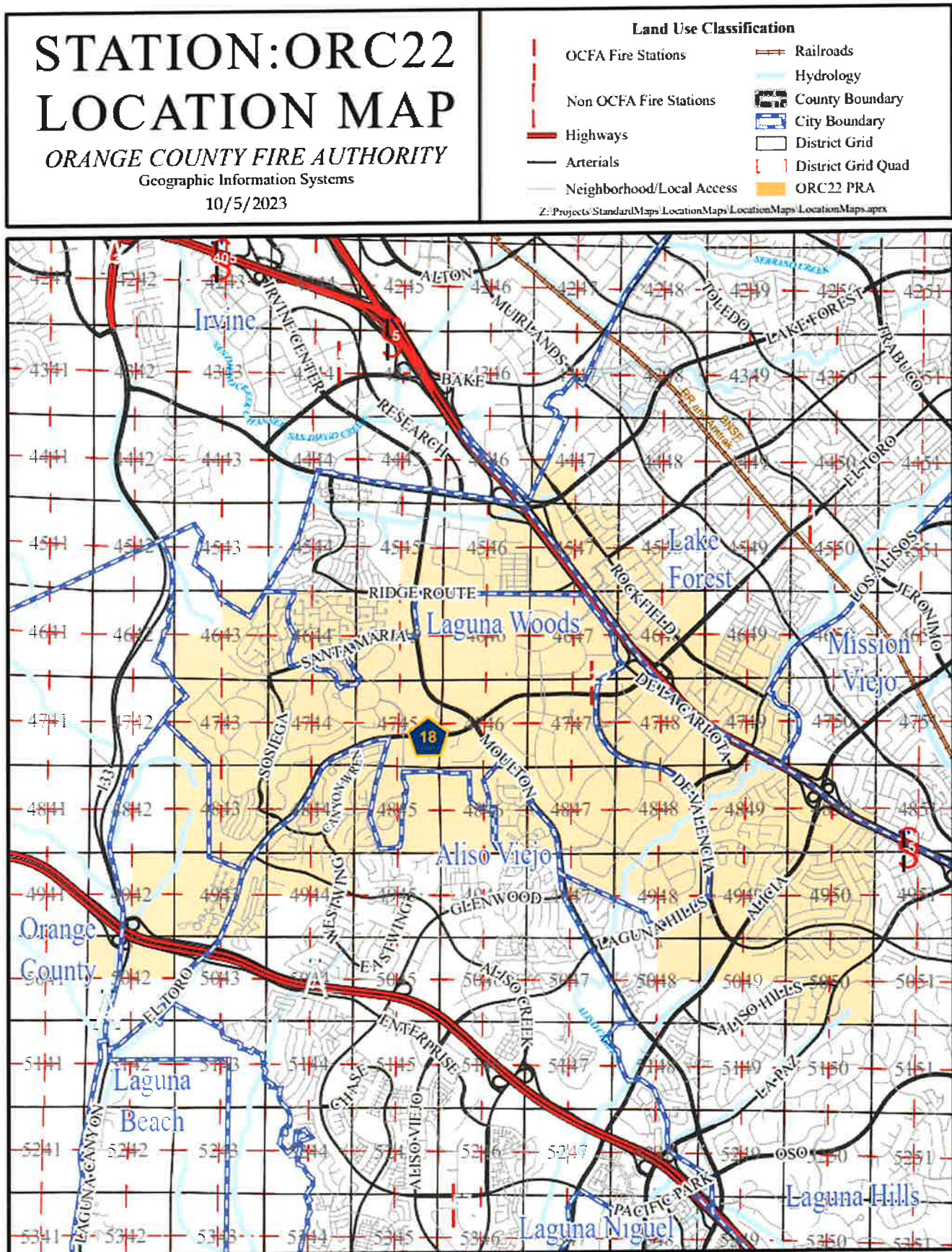
Please review the following criteria for activation and upgrades of aforementioned unit per OCEMS Policy #705.00:

- A. Justification for an additional PAU or ALS unit.
  - a. The OCFA hired an independent consultant to study our Standards of Coverage and provide data driven recommendations. An area identified as high call density, frequent second call generation and equipment with high UHUs was the Saddleback Valley. More specifically, Laguna Woods. This high call volume draws surrounding resources and is putting pressure on the entire region.
  - b. A location has been identified is the southern end of Laguna woods that would provide depth of coverage to Laguna Woods, Aliso Viejo and Mission Viejo.
- B. Description of the geographical location and boundaries for the proposed service.
  - a. Engine 12: urban and wildland areas, see attached map (Attachment B)
- C. Justification for variances (if any) from the applicant's plan for adhering to the Board of Supervisors Resolution 79-240: One unit for every 64,000 population; or one unit per 16 square miles; or an average of five minutes or less response time; or adjacent units are at or above 300 total responses/month (Policy 700.00).
  - a. No variances from Board of Supervisors Resolution 79-240.
- D. A workload analysis of the impact on contiguous PAU or ALS units.
  - a. Data showed a large regional strain for ALS coverage in the Laguna Woods area. The high call volume in Laguna Woods is primarily serviced by Engine 22 (4,825 annual calls) and Engine 222 (5,078 annual calls). This high call volume draws ALS resources into the city from the surrounding areas of Aliso Viejo and Lake Forest.
- E. Proposed time frame for implementation.
  - a. Engine 12 July 1, 2025 @ 0800
- F. Commitment to utilize and maintain telecommunications as specified by the OCEMS.
  - a. OCFA commits to utilize and maintain telecommunications as specified by OCEMS.
- G. Commitment to maintain a drug and solution inventory and basic and ALS medical equipment and supplies as specified by the OCEMS.

- a. OCFA commits to maintain a drug and solution inventory and basic and ALS medical equipment and supplies as specified by the OCEMS.
- H. Training needs for meeting OCEMS staffing requirements of two Paramedics per ALS units.
  - a. OCFA units will continue to meet all training and staffing requirements as outlined by OCEMS.



ATTACHMENT B





**OCFA STATION 18  
(Trabucco Canyon)**

Engine 18 will be upgraded from a Paramedic Assessment Unit to a 4-person ALS unit consisting of 2 paramedics. The ALS upgrade will be effective July 1, 2025. Engine 18 is located at OCFA Fire Station 18 at 30942 Trabucco Canyon Road, Trabucco Canyon, CA 92678.

This additional ALS unit will continue to meet all OCEMS requirements as an ALS service provider. Engine 18 has the full OCEMS required inventory of supplies, equipment, and medications; and is equipped for communications as specified by OCEMS.

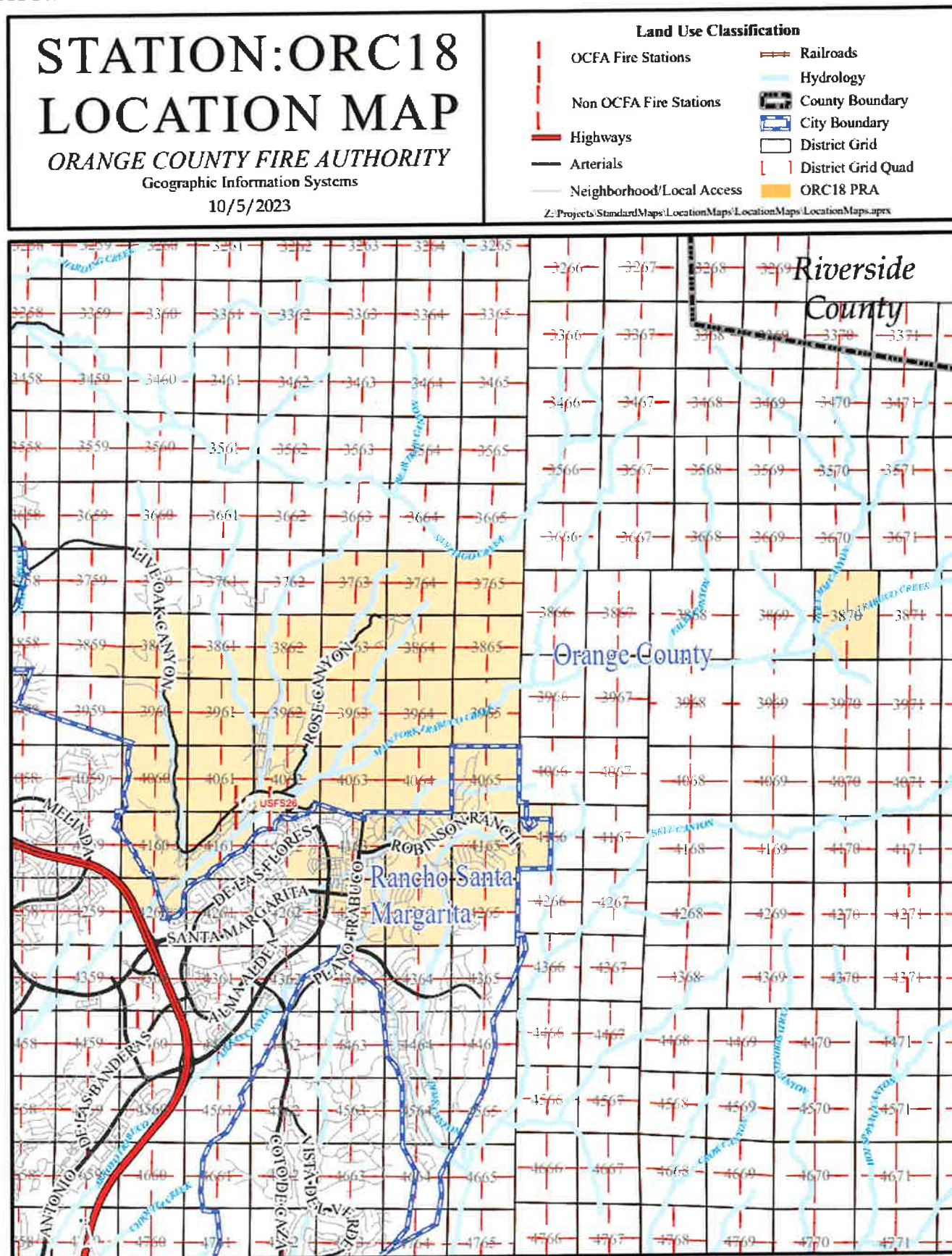
Please review the following criteria for activation and upgrades of aforementioned unit per OCEMS Policy #705.00:

- A. Justification for an additional PAU or ALS unit.
  - a. Continued development and population expansion in south Orange County continues to increase the pressure on the EMS system. The current paramedic unit is located at an adjacent fire station in Rancho Santa Margarita and continues to see an increase in call volume. The upgrade of Engine 18 to an ALS unit is in response to call volume increases in the Saddleback Valley.
- B. Description of the geographical location and boundaries for the proposed service.
  - a. Engine 18: suburban and wildland areas, see attached map (Attachment C)
- C. Justification for variances (if any) from the applicant's plan for adhering to the Board of Supervisors Resolution 79-240: One unit for every 64,000 population; or one unit per 16 square miles; or an average of five minutes or less response time; or adjacent units are at or above 300 total responses/month (Policy 700.00).
  - a. No variances from Board of Supervisors Resolution 79-240.
- D. A workload analysis of the impact on contiguous PAU or ALS units.
  - a. Engine 18 has seen a 10% increase in call volume over the past several years. That area has been serviced by a PAU and the ALS unit is shared with Rancho Santa Margarita out of Station 45. Medic 45 has also seen an increase in call volume of 30% over 3 years. Because of the remote location for Engine 18, the second due ALS unit is coming with an extended response time. Saddleback Valley continues to get busier every year and strain the EMS system. The upgrade of Engine 18 to an ALS unit will add depth to the area and reduce Paramedic response times.
- E. Proposed time frame for implementation.
  - a. Engine 18 July 1, 2025 @ 0800
- F. Commitment to utilize and maintain telecommunications as specified by the OCEMS.
  - a. OCFA commits to utilize and maintain telecommunications as specified by OCEMS.
- G. Commitment to maintain a drug and solution inventory and basic and ALS medical equipment and supplies as specified by the OCEMS.
  - a. OCFA commits to maintain a drug and solution inventory and basic and ALS medical equipment and supplies as specified by the OCEMS.

H. Training needs for meeting OCEMS staffing requirements of two Paramedics per ALS units.

- a. OCFA units will continue to meet all training and staffing requirements as outlined by OCEMS.

ATTACHMENT C





**OCFA STATION 24  
(Mission Viejo)**

ALS Truck 9 will be relocated from Station 9 to Station 24, both in the city of Mission Viejo. The ALS relocation will tentatively be effective July 1, 2025 and is contingent on the completion of construction of the new Station 24. Truck 24 will be located at OCFA Fire Station 24 at 25862 Marguerite Pkwy, Mission Viejo, CA 92692

This movement of an ALS unit will meet all OCEMS requirements as an ALS service provider. Truck 24 will continue to have the full OCEMS required inventory of supplies, equipment, and medications; and is equipped for communications as specified by OCEMS.

Please review the following criteria for activation and upgrades of aforementioned unit per OCEMS Policy #705.00:

- A. Justification for an additional PAU or ALS unit.
  - a. The movement of Truck 24 will place an important resource in the center of Mission Viejo which is more centric for the response to the entire city. Station 24 will be serviced by Paramedic Engine 24 and Paramedic Truck 24. This relocation will place a second Paramedic resource in an area with higher EMS incident density. The new location has easy freeway access and avoids any delays created by the Mission Viejo Mall traffic plan.
  - b. Station 9 – near Mission Viejo Mall will continue to be serviced by Paramedic Engine 9.
- B. Description of the geographical location and boundaries for the proposed service.
  - a. Truck 24: urban area, see attached map (Attachment D)
- C. Justification for variances (if any) from the applicant's plan for adhering to the Board of Supervisors Resolution 79-240: One unit for every 64,000 population; or one unit per 16 square miles; or an average of five minutes or less response time; or adjacent units are at or above 300 total responses/month (Policy 700.00).
  - a. No variances from Board of Supervisors Resolution 79-240.
- D. A workload analysis of the impact on contiguous PAU or ALS units.
  - a. Station 24 is a very busy roll area and often supports the adjacent cities of Laguna Woods and Lake Forest. Engine 24 ran over 2,600 incidents in 2024 and is adjacent to Station 31 near Casta Del Sol which ran over 3,200 incidents in 2024. This move will locate an additional Paramedic unit closer to the very busy Saddleback Valley.
- E. Proposed time frame for implementation.
  - a. Truck 24 July 1, 2025 @ 0800. This date is contingent on the completion of the new Station 24. The anticipated date of completion is late June to late July.
- F. Commitment to utilize and maintain telecommunications as specified by the OCEMS.
  - a. OCFA commits to utilize and maintain telecommunications as specified by OCEMS.
- G. Commitment to maintain a drug and solution inventory and basic and ALS medical equipment and supplies as specified by the OCEMS.
  - a. OCFA commits to maintain a drug and solution inventory and basic and ALS medical equipment and supplies as specified by the OCEMS.

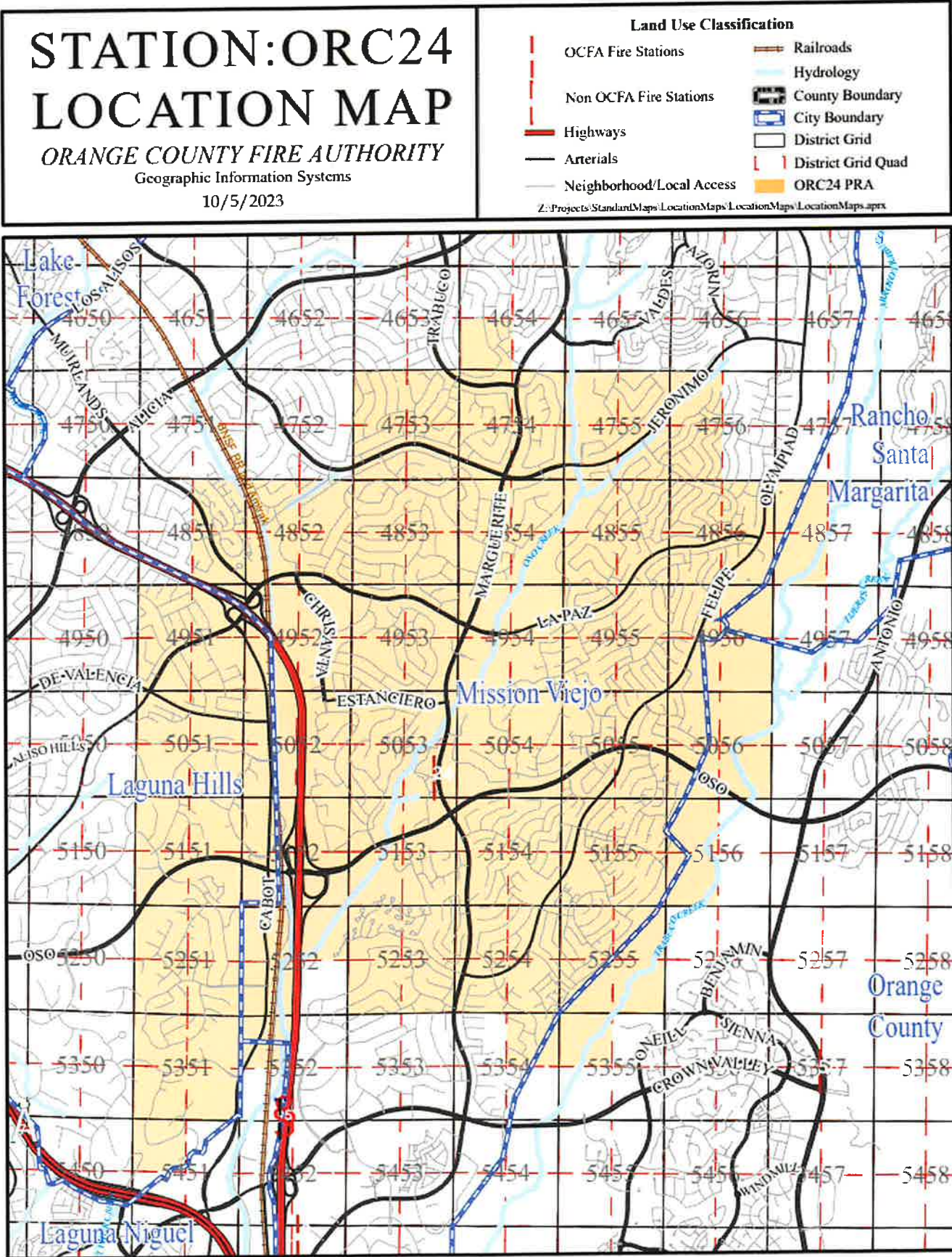
Carl Schultz, M.D.

5/27/2025

Page 13

- H. Training needs for meeting OCEMS staffing requirements of two Paramedics per ALS units.
  - a. OCFA units will continue to meet all training and staffing requirements as outlined by OCEMS.

ATTACHMENT D





**OCFA STATION 45  
(Rancho Santa Margarita)**

Engine 45 will be upgraded from a 3-person BLS Engine to a 4-person ALS Engine consisting of 2 paramedics. The ALS reconfiguration will be effective July 1, 2025. Paramedic Engine 45 will be located at OCFA Fire Station 45 at 30131 Aventura, Rancho Santa Margarita, CA 92688.

This reconfiguration of ALS Engine 45 will meet all OCEMS requirements as an ALS service provider. Engine 45 will have the full OCEMS required inventory of supplies, equipment, and medications; and is equipped for communications as specified by OCEMS.

Truck 45 will be upgraded from a BLS Truck to a 4-person ALS Truck consisting of 2 paramedics. The ALS reconfiguration will be effective July 1, 2025. Paramedic Truck 45 will be located at OCFA Fire Station 45 at 30131 Aventura, Rancho Santa Margarita, CA 92688.

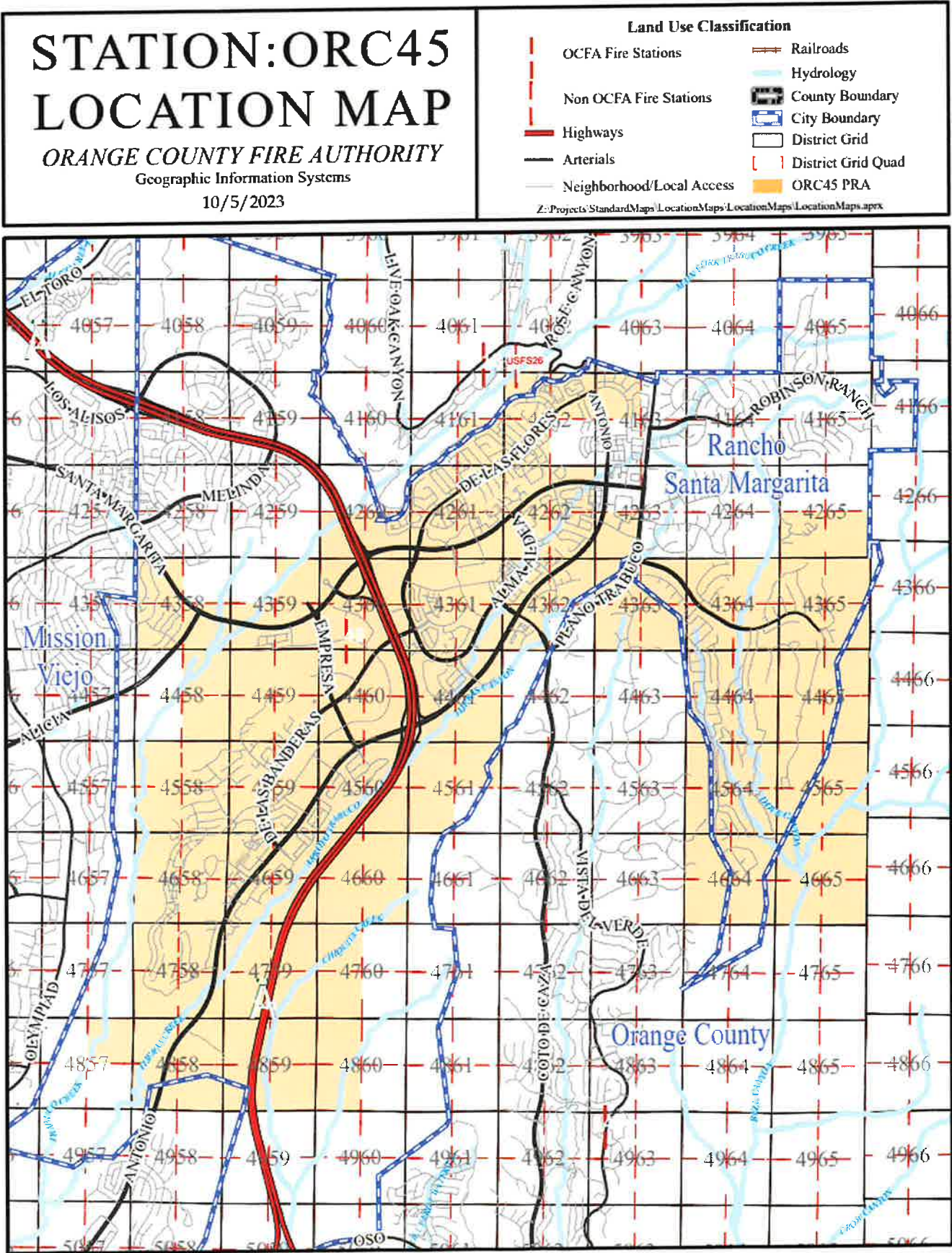
This addition of ALS Truck 45 will meet all OCEMS requirements as an ALS service provider. Truck 45 will have the full OCEMS required inventory of supplies, equipment, and medications; and is equipped for communications as specified by OCEMS.

Please review the following criteria for activation and upgrades of aforementioned unit per OCEMS Policy #705.00:

- A. Justification for an additional PAU or ALS unit.
  - a. Currently, Station 45 is staffed with BLS Engine 45, BLS Truck 45 and Medic Squad 45. After our recent Standards of Coverage study, a data driven recommendation was given to relocate personnel from Medic Squad 45 to open a new Fire Station 12 at the south end of Laguna Woods. With the termination of Medic Squad 45, Engine 45 will be reconfigured into an ALS Engine. ALS Truck 45 will be added to add redundancy in coverage, providing a second Paramedic unit to Rancho Santa Margarita.
- B. Description of the geographical location and boundaries for the proposed service.
  - a. Engine 45 and Truck 45: urban and Wildland area, see attached map (Attachment E)
- C. Justification for variances (if any) from the applicant's plan for adhering to the Board of Supervisors Resolution 79-240: One unit for every 64,000 population; or one unit per 16 square miles; or an average of five minutes or less response time; or adjacent units are at or above 300 total responses/month (Policy 700.00).
  - a. No variances from Board of Supervisors Resolution 79-240.
- D. A workload analysis of the impact on contiguous PAU or ALS units.
  - a. Data showed a large regional gap for ALS coverage in the Saddleback Valley. The high call volume in Laguna Woods is primarily serviced by Engine 22 (4,825 annual calls) and Engine 222 (5,078 annual calls). This high call density frequently draws ALS resources into the city from the surrounding areas of Aliso Viejo and Lake Forest.
  - b. The movement of Medic 45 personnel and reconfiguration of Paramedic Engine 45 and Paramedic Truck 45 will add a new ALS Engine and ALS Truck to Saddleback Valley and open a new Fire Station. The high UHUs of Laguna Woods units is driving the addition of Fire Station 12.

- E. Proposed time frame for implementation.
  - a. Engine 45 and Truck 45 July 1, 2025 @ 0800
- F. Commitment to utilize and maintain telecommunications as specified by the OCEMS.
  - a. OCFA commits to utilize and maintain telecommunications as specified by OCEMS.
- G. Commitment to maintain a drug and solution inventory and basic and ALS medical equipment and supplies as specified by the OCEMS.
  - a. OCFA commits to maintain a drug and solution inventory and basic and ALS medical equipment and supplies as specified by the OCEMS.
- H. Training needs for meeting OCEMS staffing requirements of two Paramedics per ALS units.  
OCFA units will continue to meet all training and staffing requirements as outlined by OCEMS

Attachment E





OCFA STATION 46  
(STANTON)

Engine 46 will be upgraded from a PAU Engine to a 4-person ALS Engine consisting of 2 paramedics. The ALS upgrade will be effective July 1, 2025. Engine 46 is located at OCFA Fire Station 46 at 7871 Pacific Street, Stanton, CA 90680.

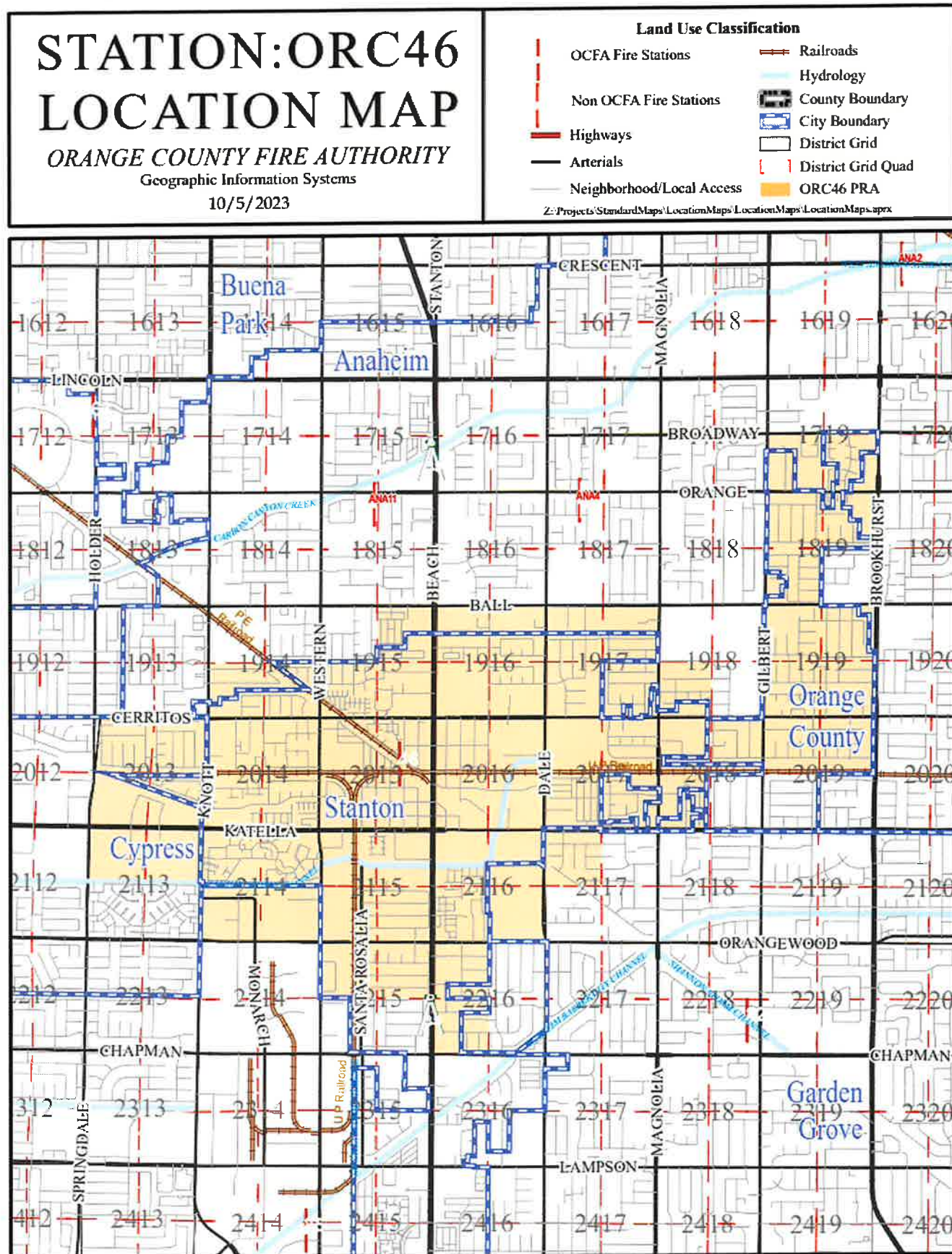
This additional ALS unit will meet all OCEMS requirements as an ALS service provider. Engine 46 will continue to have the full OCEMS required inventory of supplies, equipment, and medications; and is equipped for communications as specified by OCEMS.

Please review the following criteria for activation and upgrades of aforementioned unit per OCEMS Policy #705.00:

- A. Justification for an additional PAU or ALS unit.
  - a. Currently, Station 46 is staffed with PAU Engine 46 and Paramedic Squad 46 (Medic 46). Engine 46 responds to over 3,600 incidents annually. Medic 46 responds to over 3,000 incidents annually.
  - b. Continued population growth in the west end of Orange County and state mandates for local housing requirements outlined in the Statewide Housing Plan are contributing factors to the increased demand on our EMS services.
  - c. The addition of ALS Engine 46 to the existing Medic 46 will double our ALS capabilities for Stanton and surrounding cities and improve the depth of coverage.
- B. Description of the geographical location and boundaries for the proposed service.
  - a. Engine 46: urban areas, see attached map (Attachment F)
- C. Justification for variances (if any) from the applicant's plan for adhering to the Board of Supervisors Resolution 79-240: One unit for every 64,000 population; or one unit per 16 square miles; or an average of five minutes or less response time; or adjacent units are at or above 300 total responses/month (Policy 700.00).
  - a. No variances from Board of Supervisors Resolution 79-240.
- D. A workload analysis of the impact on contiguous PAU or ALS units.
  - a. Engine 46 and Medic 46 have seen a 5% increase in call volume annually over the past year.
  - b. The surrounding stations in Buena Park, Garden Grove and Anaheim have seen similar or larger growth in call volumes. Medic 46 often gets pulled into surrounding cities for ALS response because of the incident densities.
  - c. The cities in the west end of Orange County continue to get busier every year and strain the EMS system. The upgrade of Engine 46 to an ALS unit will add depth to the area and reduce Paramedic response times.
- E. Proposed time frame for implementation.
  - a. Engine 46 July 1, 2025 @ 0800
- F. Commitment to utilize and maintain telecommunications as specified by the OCEMS.
  - a. OCFA commits to utilize and maintain telecommunications as specified by OCEMS.

- G. Commitment to maintain a drug and solution inventory and basic and ALS medical equipment and supplies as specified by the OCEMS.
  - a. OCFA commits to maintain a drug and solution inventory and basic and ALS medical equipment and supplies as specified by the OCEMS.
- H. Training needs for meeting OCEMS staffing requirements of two Paramedics per ALS units.
  - a. OCFA units will continue to meet all training and staffing requirements as outlined by OCEMS.

ATTACHMENT F





**OCFA STATION 57  
(Aliso Viejo)**

Engine 57 will be upgraded from a BLS Engine to a 4-person ALS Engine consisting of 2 paramedics. The ALS reconfiguration will be effective July 1, 2025. Paramedic Engine 57 will be located at OCFA Fire Station 57 at 57 Journey, Aliso Viejo, CA 92656

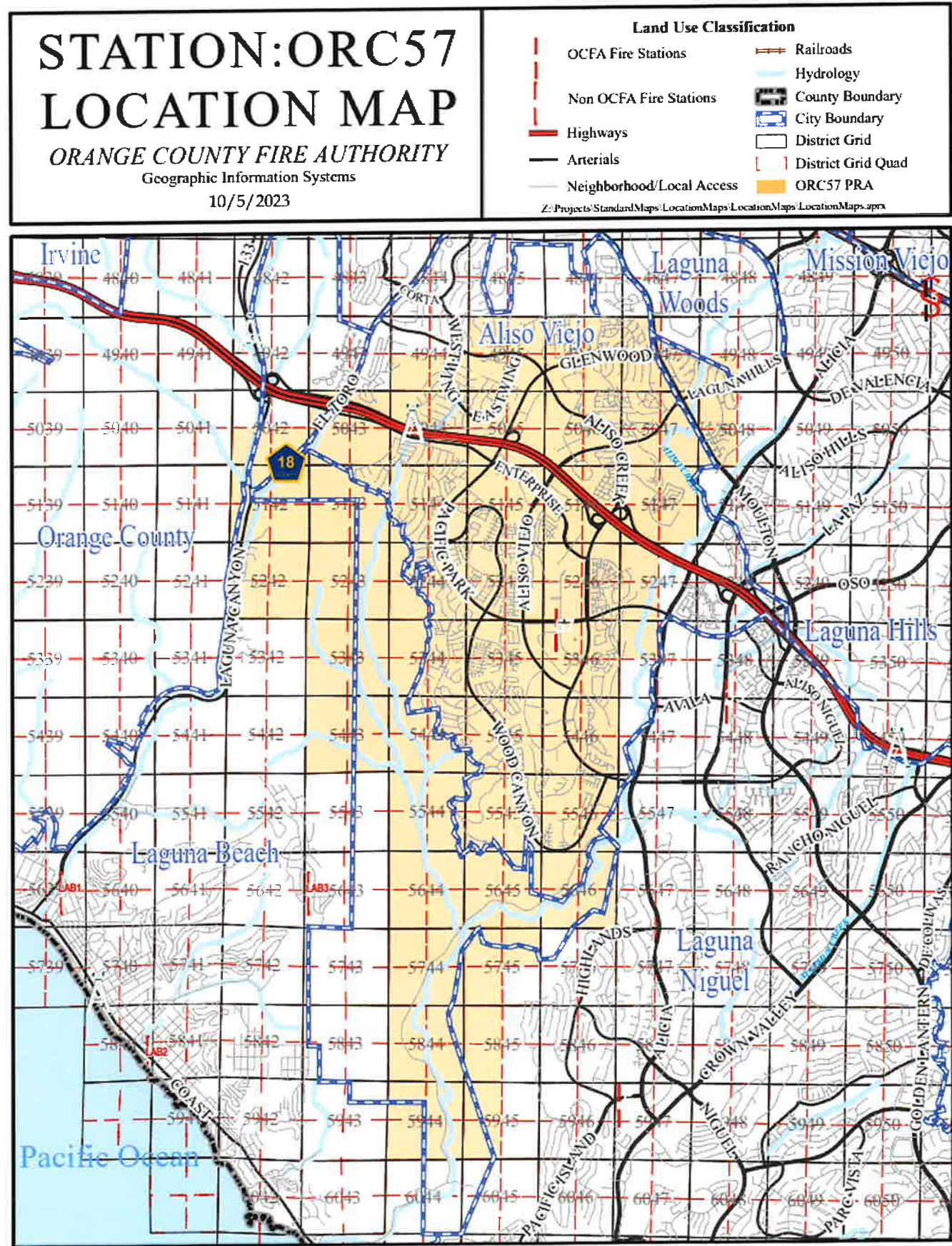
This reconfiguration of an ALS unit will meet all OCEMS requirements as an ALS service provider. Engine 57 will have the full OCEMS required inventory of supplies, equipment, and medications; and is equipped for communications as specified by OCEMS.

Please review the following criteria for activation and upgrades of aforementioned unit per OCEMS Policy #705.00:

- A. Justification for an additional PAU or ALS unit.
  - a. Currently, Station 57 is staffed with BLS Engine 57 and Medic Squad 57. After our recent Standards of Coverage study, a data driven recommendation was given to relocate personnel from Medic Squad 57 to open a new Fire Station 12 in the south end of Laguna Woods. With the termination of Medic Squad 57, Engine 57 will be reconfigured into a ALS Engine.
  - b. The addition of a Paramedic Engine at the new Station 12 will keep Station 57 resources in the city of Aliso Viejo more, reducing the ALS response times in the surrounding area.
- B. Description of the geographical location and boundaries for the proposed service.
  - a. Engine 57: urban area, see attached map (Attachment G)
- C. Justification for variances (if any) from the applicant's plan for adhering to the Board of Supervisors Resolution 79-240: One unit for every 64,000 population; or one unit per 16 square miles; or an average of five minutes or less response time; or adjacent units are at or above 300 total responses/month (Policy 700.00).
  - a. No variances from Board of Supervisors Resolution 79-240.
- D. A workload analysis of the impact on contiguous PAU or ALS units.
  - a. Data showed a large regional gap for ALS coverage in the Saddleback Valley. The high call volume in Laguna Woods is primarily serviced by Engine 22 (4,825 annual calls) and Engine 222 (5,078 annual calls). This high call density frequently draws ALS resources into the city from the surrounding areas of Aliso Viejo and Lake Forest.
  - b. The movement of Medic 57 personnel and reconfiguration of Paramedic Engine 57 will add a new ALS Engine to Saddleback Valley and open a new Fire Station. The high UHUs of Laguna Woods units is driving the addition of Fire Station 12.
- E. Proposed time frame for implementation.
  - a. Engine 57 July 1, 2025 @ 0800
- F. Commitment to utilize and maintain telecommunications as specified by the OCEMS.
  - a. OCFA commits to utilize and maintain telecommunications as specified by OCEMS.
- G. Commitment to maintain a drug and solution inventory and basic and ALS medical equipment and supplies as specified by the OCEMS.

- a. OCFA commits to maintain a drug and solution inventory and basic and ALS medical equipment and supplies as specified by the OCEMS.
- H. Training needs for meeting OCEMS staffing requirements of two Paramedics per ALS units.
  - a. OCFA units will continue to meet all training and staffing requirements as outlined by OCEMS.

ATTACHMENT G





**OCFA STATION 64  
(Westminster)**

ALS Engine 25 will be relocated from Station 25 in Midway City to Station 64, in the city of Westminster. The relocation of the personnel will transition to ALS Truck 64. The ALS relocation will be effective July 1, 2025. Truck 64 will be located at OCFA Fire Station 64 at 7351 Westminster Blvd., Westminster, CA 92683

This movement of an ALS unit will meet all OCEMS requirements as an ALS service provider. Truck 64 will continue to have the full OCEMS required inventory of supplies, equipment, and medications; and is equipped for communications as specified by OCEMS.

Please review the following criteria for activation and upgrades of aforementioned unit per OCEMS Policy #705.00:

- A. Justification for an additional PAU or ALS unit.
  - a. The movement of Truck 64 will place an important resource in the center of a regional high-EMS volume area. Station 64 will be serviced by Paramedic Engine 64 and Paramedic Truck 64. This relocation will place a second Paramedic resource in an area with higher EMS incident density and provide redundancy behind Engine 64. The new location has easy freeway access.
  - b. Midway City is surrounded by regional OCFA cities that overlap roll areas. Midway City will continue to be well served by Stations 64, 65, 66 and 80.
- B. Description of the geographical location and boundaries for the proposed service.
  - a. Truck 64: urban area, see attached map (Attachment H)
- C. Justification for variances (if any) from the applicant's plan for adhering to the Board of Supervisors Resolution 79-240: One unit for every 64,000 population; or one unit per 16 square miles; or an average of five minutes or less response time; or adjacent units are at or above 300 total responses/month (Policy 700.00).
  - a. No variances from Board of Supervisors Resolution 79-240.
- D. A workload analysis of the impact on contiguous PAU or ALS units.
  - a. Engine 64 is a very busy roll area which ran over 3,300 incidents in 2024
  - b. Engine 25 was busy last year and ran over 2,900 incidents. Data analysis showed the vast majority of their incidents were in the city of Westminster.
  - c. This relocation of an ALS resource will move the resource into the high-volume area and reduce response times.
- E. Proposed time frame for implementation.
  - a. Truck 64 July 1, 2025 @ 0800.
- F. Commitment to utilize and maintain telecommunications as specified by the OCEMS.
  - a. OCFA commits to utilize and maintain telecommunications as specified by OCEMS.
- G. Commitment to maintain a drug and solution inventory and basic and ALS medical equipment and supplies as specified by the OCEMS.
  - a. OCFA commits to maintain a drug and solution inventory and basic and ALS medical equipment and supplies as specified by the OCEMS.

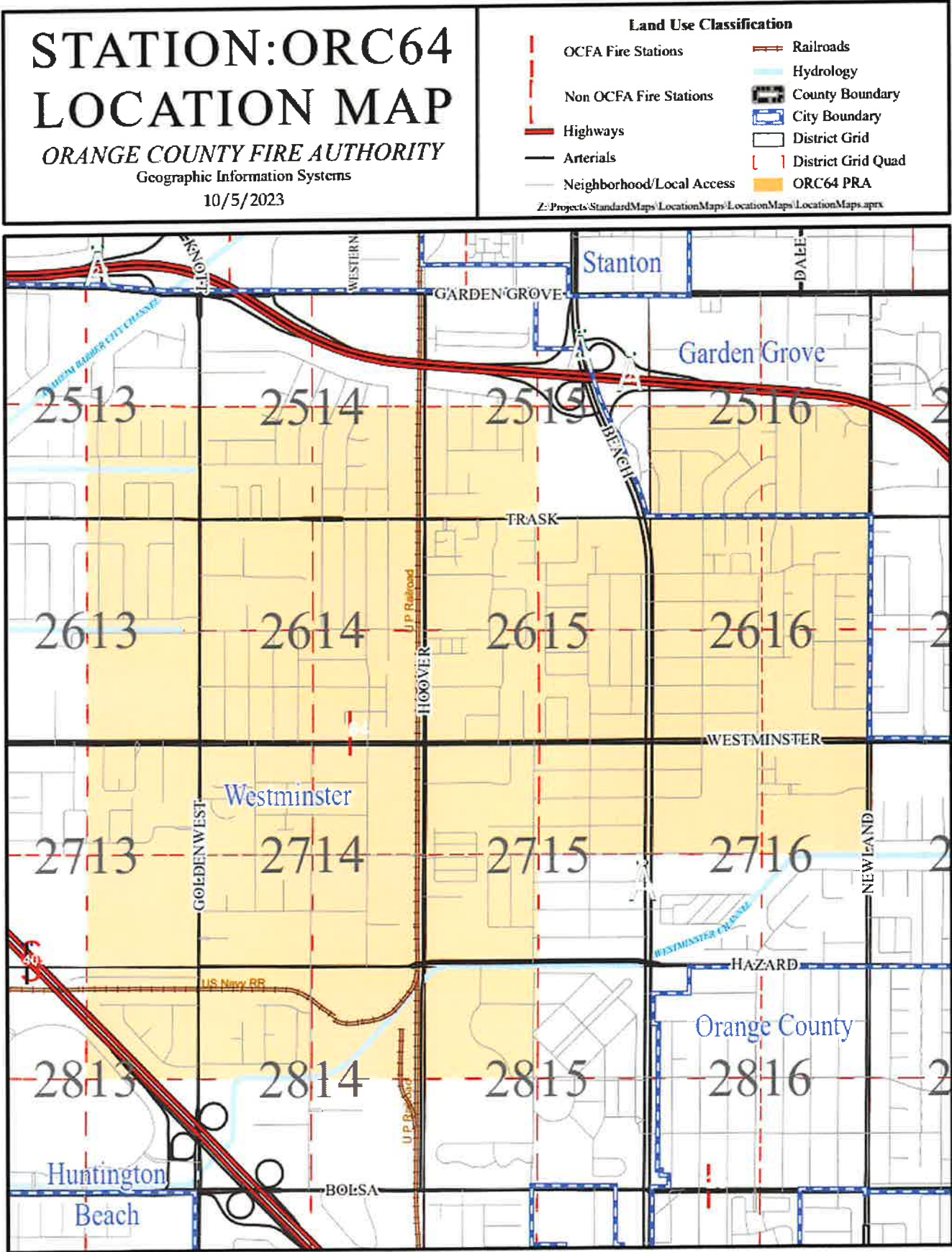
Carl Schultz, M.D.

5/27/2025

Page 25

- H. Training needs for meeting OCEMS staffing requirements of two Paramedics per ALS units.
  - b. OCFA units will continue to meet all training and staffing requirements as outlined by OCEMS.

ATTACHMENT H





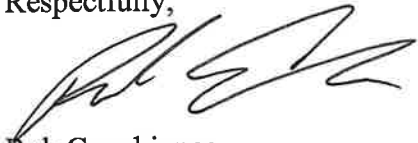
Carl Schultz, M.D.

5/27/2025

Page 27

Please feel free to contact me with any questions, and I look forward to your response.

Respectfully,

A handwritten signature in black ink, appearing to read 'Rob Capobianco', with a stylized, cursive script.

Rob Capobianco

Orange County Fire Authority

Assistant Chief, Emergency Medical Services & Training Departments