



Planning Advisory Committee (PAC) Meeting

Behavioral Health Services Act (BHSA)

Michelle Smith, BHSA Senior Manager

July 17, 2025



Today's Agenda

- **Welcome and Introductions**
- **Announcements**
- **System of Care Overview**
- **Funding Updates**
- **Community Program Planning Updates**
- **Workgroup Updates**
- **Stakeholder Feedback from 2025**
- **Networking**

Stakeholder Announcements



System of Care

Behavioral Health System of Care



A **System of Care (SOC)** is a collaborative network designed to deliver coordinated services and supports. These supports are **community-based, and culturally and linguistically responsive**, for those facing mental health and substance use challenges.

Different Behavioral Health Systems of Care (SOC)

Private Insurance & Other Insurance

- Kaiser
- Blue Cross
- Blue Shield
- TRICARE (military)
- Other

Medi-Cal Managed Care Plans (MCPs)

- CalOptima
- Kaiser

OC Health Care Agency- Behavioral Health

- Mental Health Plan (MHP) Specialty Mental Health Services (SMHS)
- Drug Medi-Cal Organized Delivery System (DMC-ODS)



Mapping

In February 2025, we began mapping our current mental health (MH), substance use disorder (SUD) and housing services and supports to the **New Behavioral Health Continuum of Care.**



Purpose of Mapping the SOC

Purpose of Mapping Project

Align

Align programs with the new BH continuum

Inform

Inform our fiscal mapping and the development of the Behavioral Health Integrated Plan

Identify

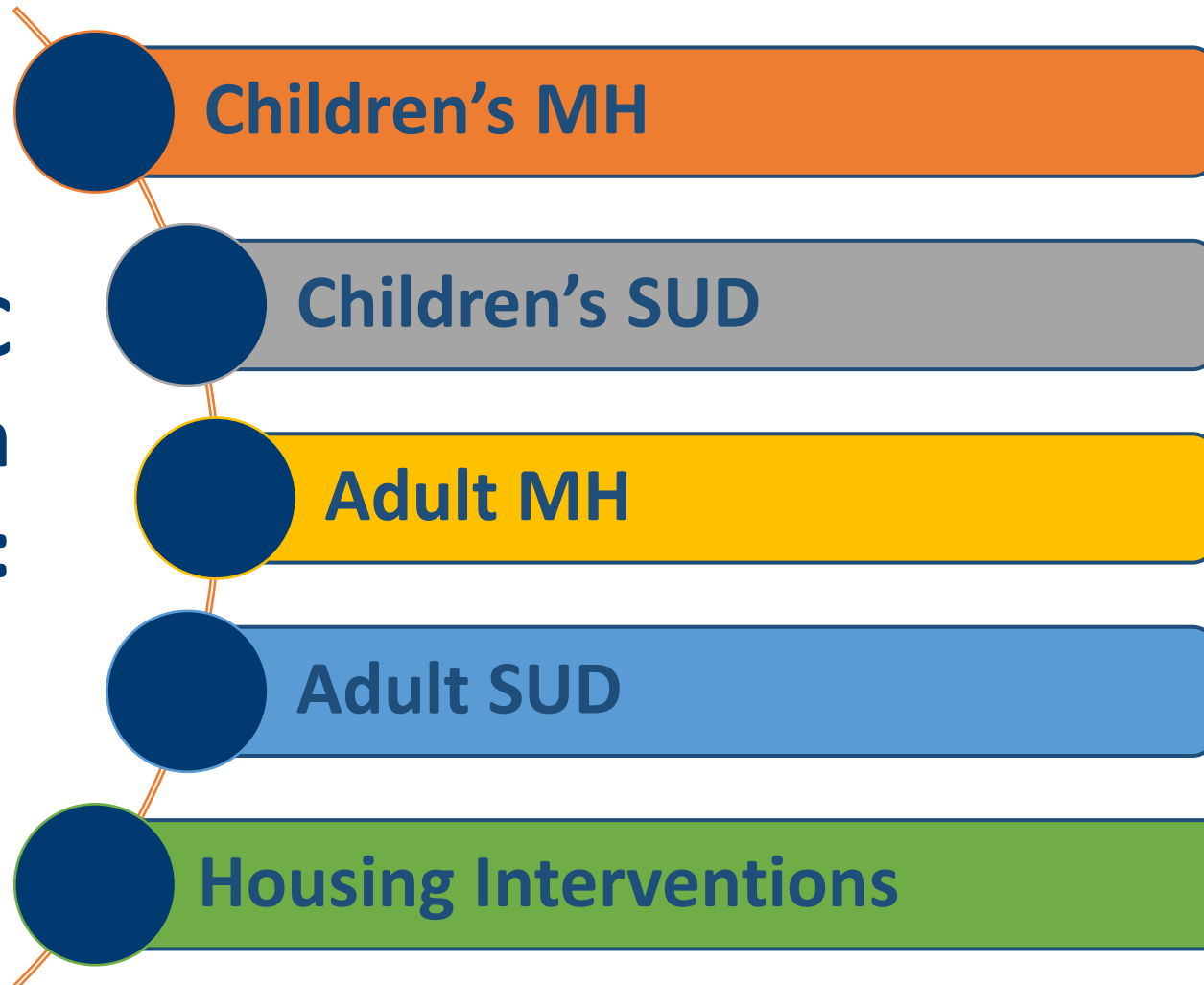
Identify gaps in the SOC

Educate

Educate the community on the services and supports that the County provides during the community engagement process

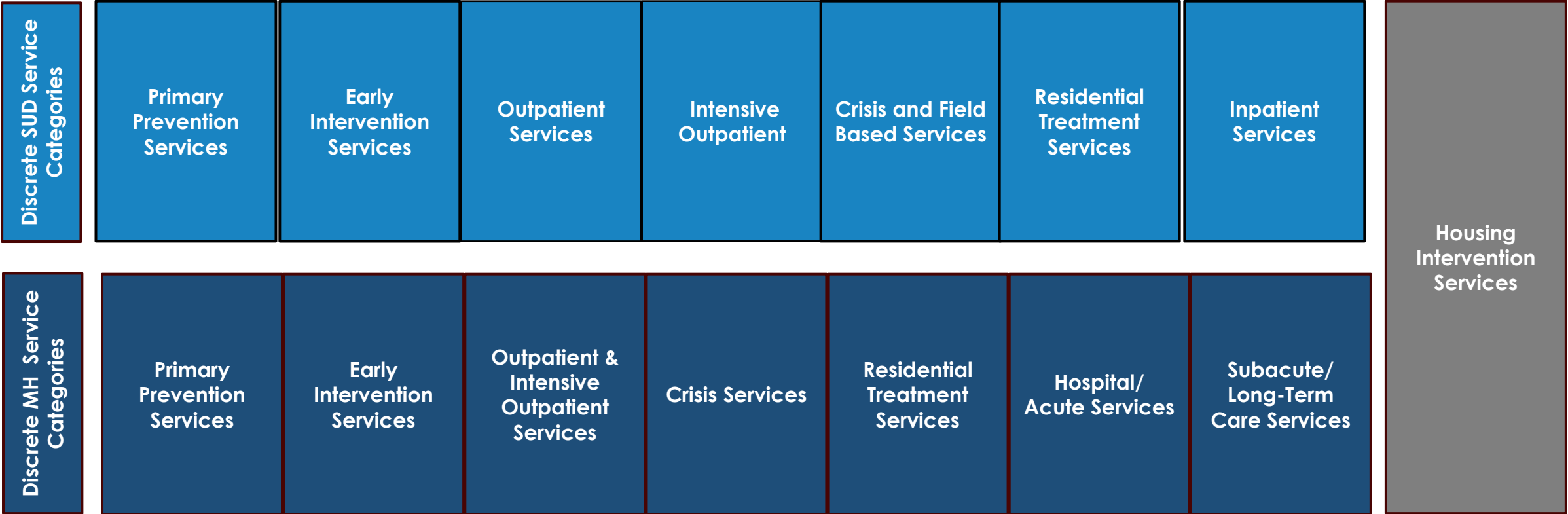
Mapping (con't)

**Five (5) SOC
maps have been
developed:**



Behavioral Health Care Continuum

3-Year Integrated Plans (IPs) structure for ALL county behavioral health funding sources, not just the BHSA, reported in a Behavioral Health Care Continuum.



Funding Updates

Estimated BHSA Revenue for Orange County

These are preliminary estimates and are **subject to change!**

BHSA Funding Category	Projected FY 2026/27 BHSA Incoming Revenue*
Total Annual BHSA Funding	\$244,486,000*
Housing Interventions (30% of total BHSA)	\$73,345,800
Chronically Homeless (50%)	\$36,672,900
Other (50%)	\$36,672,900
Permanent Supported Housing (25% of Other)	\$18,336,450
Behavioral Health Services & Supports (BHSS) (35% of total BHSA)	\$85,570,100
BHSS Other (49%)	\$41,929,349
Early Intervention (EI) (51%)	\$43,640,751
Early Intervention <25yro (51% of EI)	\$22,256,783
Full Service Partnership (FSP) (35% of total BHSA)	\$85,570,100

*Based on weighted average as required by the state.

Break

Community Program Planning Updates

Focus Groups Held (April 2025 – June 2025)

Date	Group	Stakeholders	Number of Focus Groups	Number of Attendees
April 8	BHS Leadership	Providers of MH services; Providers of SUD treatment services; County social services and child welfare agencies	10	106
May 2	Youth Advisory Group	Youths (individuals with lived experience), youth MH organizations, or youth SUD organizations	1	5
May 13	Youth Foster Group	Youths (individuals with lived experience), youth MH organizations, or youth SUD organizations	2	9
May 29	Behavioral Health Equity Committee (BHEC) (subcommittees)	Individuals with behavioral health experience, including peers and families; Providers of MH services; Providers of SUD treatment services; County social services and child welfare agencies	8	38
June 9	People with Disabilities	Eligible adults and older adults (individuals with lived experience); Families of eligible children and youth, eligible adults, and eligible older adults (with lived experience); Individuals with behavioral health experience, including peers & families	1	6
June 11	LGBTQ+ Youth	Youth from historically marginalized communities; LGBTQ+ communities	1	2
June 11	Wellness Centers	People with lived experience of homelessness; Eligible adults and older adults (individuals with lived experience)	3	8
June 12	CIT Steering Committee	Public safety partners, including county juvenile justice agencies; Emergency medical services	1	23
June 16	Deaf and Hard of Hearing (BHEC subcommittees)	Community-based organizations serving culturally and linguistically diverse constituents	1	8
June 19	Rescue Mission	People with lived experience of homelessness; Eligible adults and older adults (individuals with lived experience)	2	21
June 22	Sacred Path	Organization specializing in working with underserved racially and ethnically diverse communities (Native American)	1	12
June 24	Asian and Pacific Islander	Community-based organization serving culturally and linguistically diverse constituents	1	13
June 25	Thrive Together	Youths (individuals with lived experience), youth MH organizations, or youth SUD organizations (TAY)	1	6
TOTAL			33	257

Overview of Focus Group Discussion



- System Strengths & Resources
- Gaps and Needs
- Barriers & Risk Factors
- Priority Populations
- Recommendations

*Data Limitation: The qualitative information received to date is incomplete and represents only a portion of the feedback from focus groups between April – June 30, 2025. It is not representative of all stakeholder input and is a snapshot of preliminary data only.

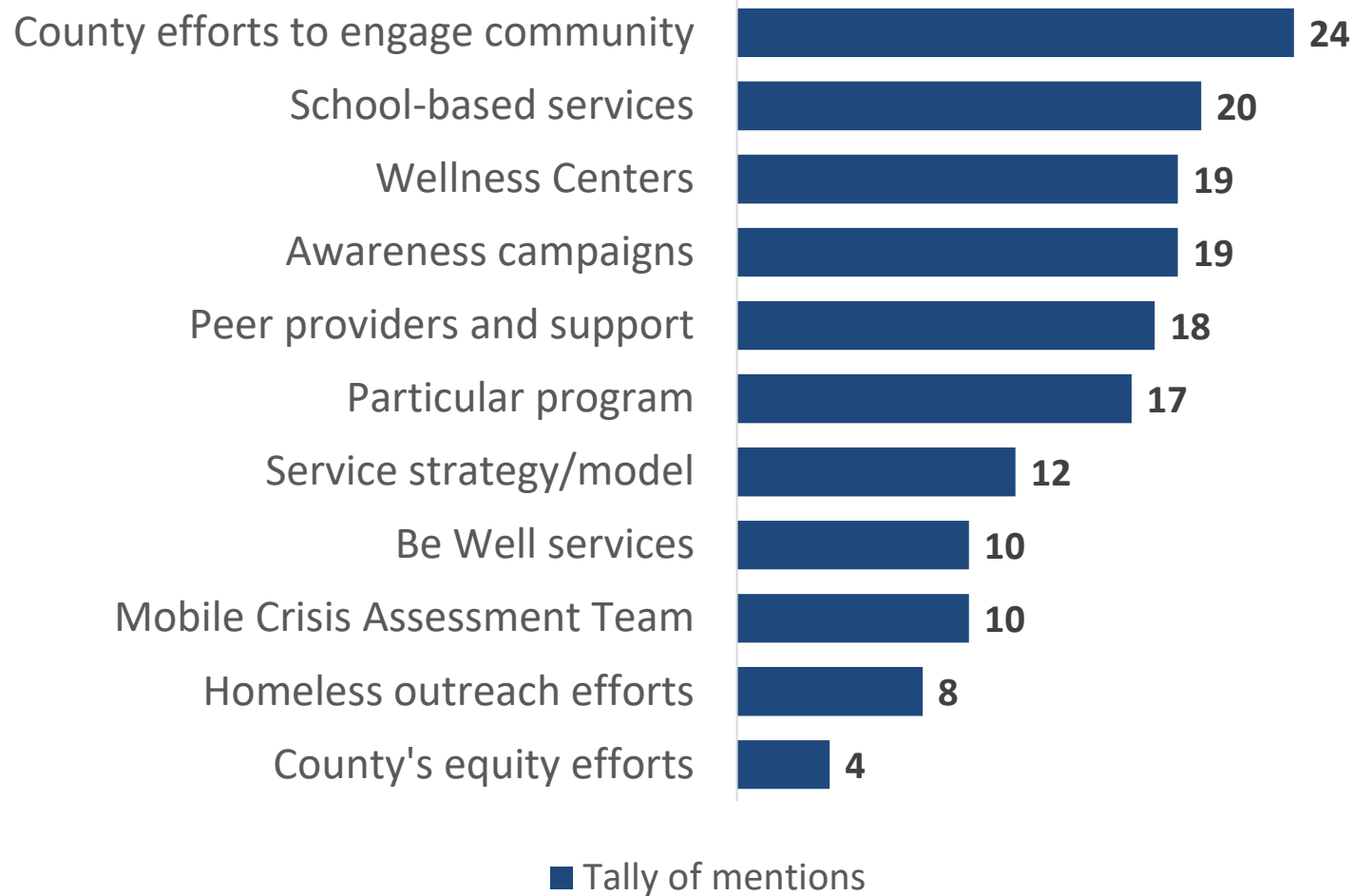
System Strengths and Resources

Elements of the behavioral health system of care that are working well:

- Specific programs and services
- Service strategies
 - Agency collaboration
 - Approaches to care
- Access to care and OC-Links
- Committed staff and managers



System Strengths and Resources



There are knowledgeable individuals in the County with different expertise to support the whole system.

*Data Limitation: The qualitative information received to date is incomplete and represents only a portion of the feedback from focus groups between April – June 30, 2025. It is not representative of all stakeholder input and is a snapshot of preliminary data only.

System Gaps and Needs

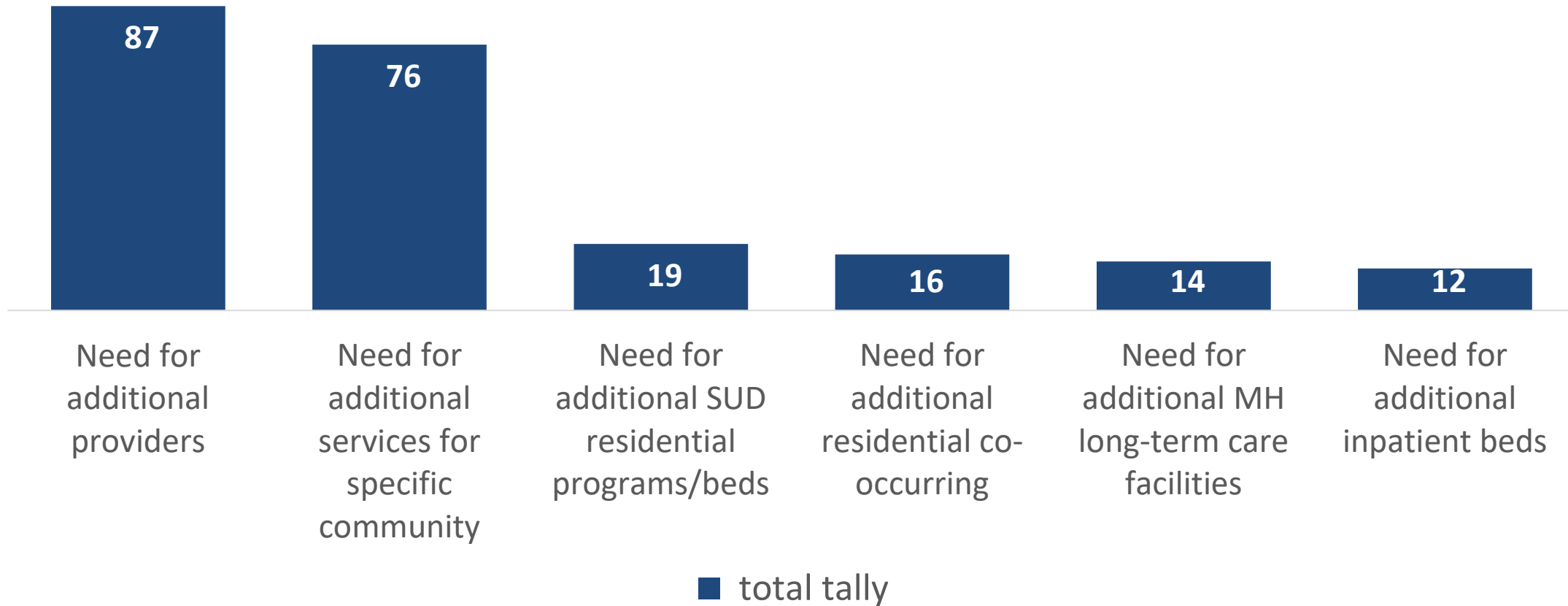
Behavioral health needs that are not currently being met:

- Services for specific populations
- Translation services and language assistance
- Specialized trainings and systems
- Residential facilities and long-term care

“Hospitals are not prepared for [the] increased criteria for hospitalization. We don’t have enough beds.”
-BHSA Leadership team

*Data Limitation: The qualitative information received to date is incomplete and represents only a portion of the feedback from focus groups between April – June 30, 2025. It is not representative of all stakeholder input and is a snapshot of preliminary data only.

System Gaps and Needs



*Data Limitation: The qualitative information received to date is incomplete and represents only a portion of the feedback from focus groups between April – June 30, 2025. It is not representative of all stakeholder input and is a snapshot of preliminary data only.

Barriers and Risk Factors

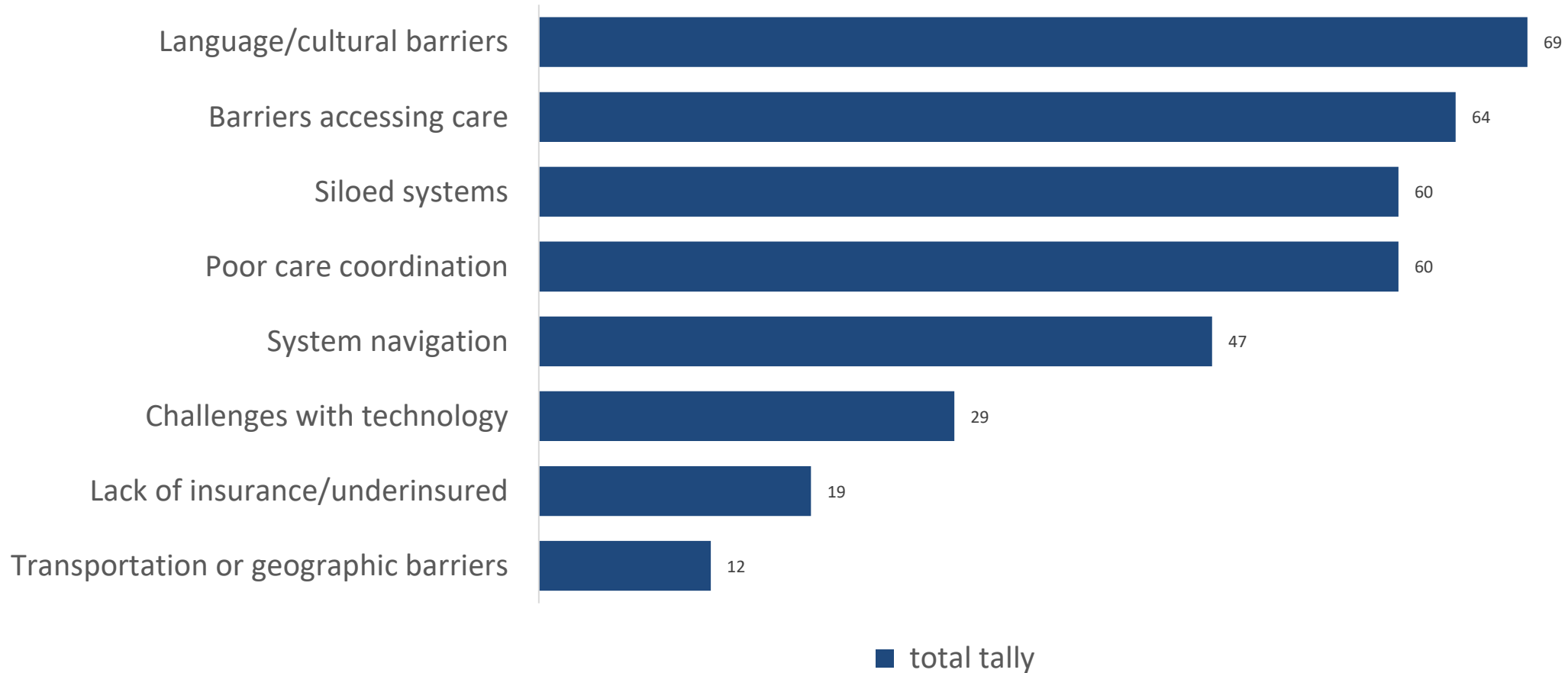
Issues accessing care or issues that increase the demand for care:

- Organizational
 - Coordination
 - Information sharing
 - Administration
- Workload, turnover, & limited staff
- Cultural humility or system mistrust
- Funding

There is a notable lack of resources, staff, and clinicians —particularly in [public] mental health.

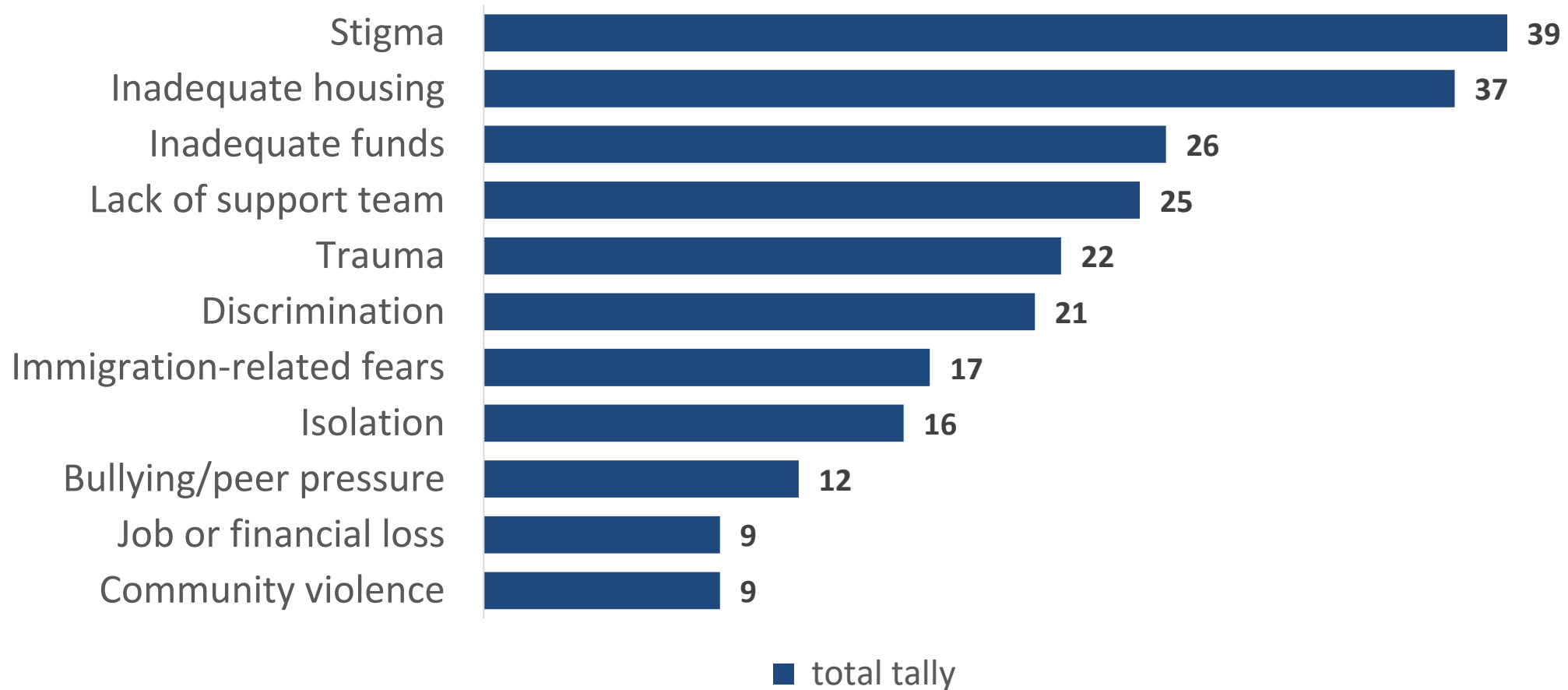
*Data Limitation: The qualitative information received to date is incomplete and represents only a portion of the feedback from focus groups between April – June 30, 2025. It is not representative of all stakeholder input and is a snapshot of preliminary data only.

Barriers



*Data Limitation: The qualitative information received to date is incomplete and represents only a portion of the feedback from focus groups between April – June 30, 2025. It is not representative of all stakeholder input and is a snapshot of preliminary data only.

Risk Factors



*Data Limitation: The qualitative information received to date is incomplete and represents only a portion of the feedback from focus groups between April – June 30, 2025. It is not representative of all stakeholder input and is a snapshot of preliminary data only.

Priority Populations Mentioned

“Systemic discrimination against LGBTQ BIPOC individuals adds another layer of stress.”

“There are no treatment centers for Natives at all.”

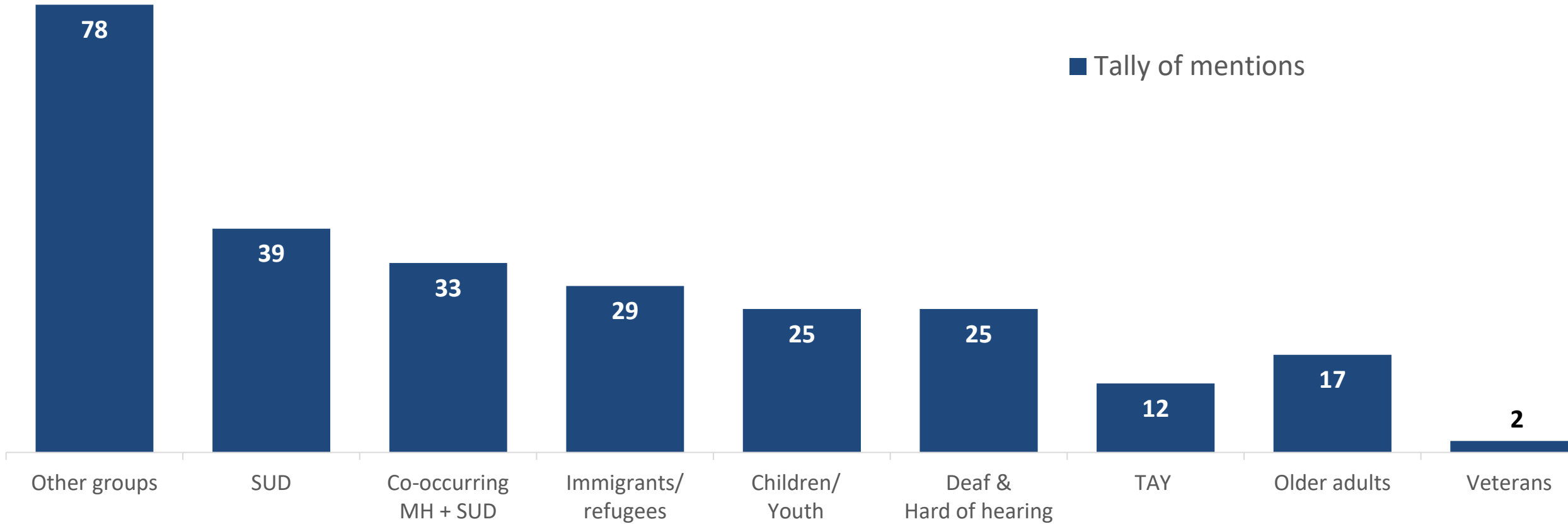
“[There are] so many programs that just focus on mental health.”

Most vulnerable groups impacted by gaps in the system of care:

- Black, Indigenous, People of Color
- LGBTQIA+
- Foster Youth
- Deaf and Hard of Hearing
- People with Disabilities

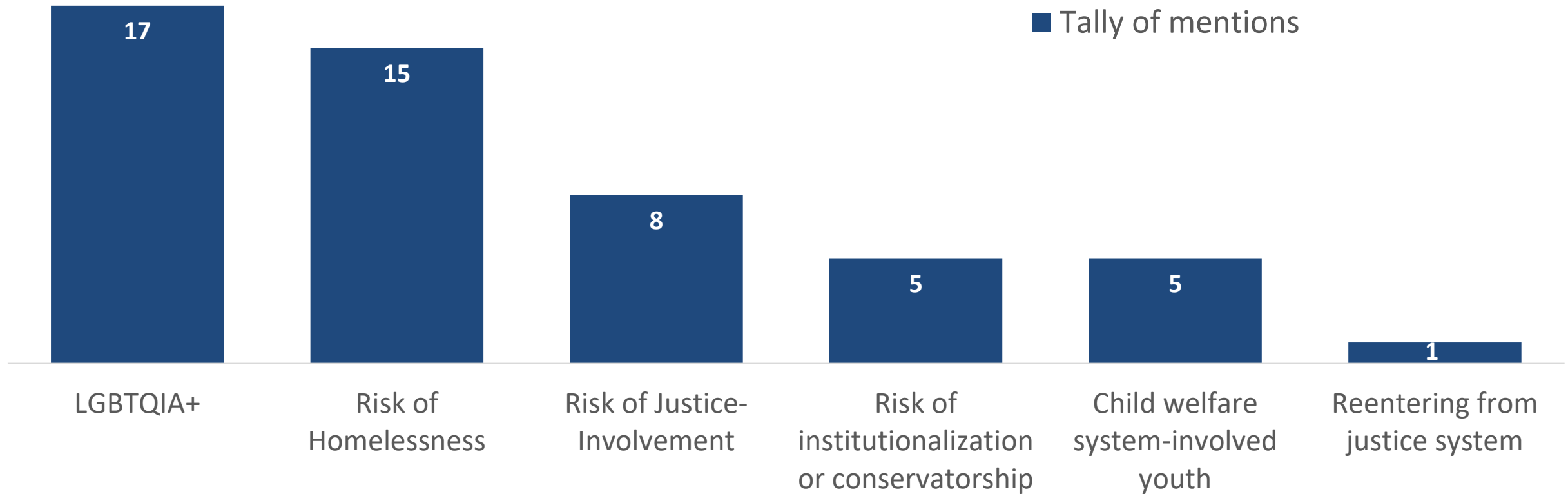
*Data Limitation: The qualitative information received to date is incomplete and represents only a portion of the feedback from focus groups between April – June 30, 2025. It is not representative of all stakeholder input and is a snapshot of preliminary data only.

Priority Populations



*Data Limitation: The qualitative information received to date is incomplete and represents only a portion of the feedback from focus groups between April – June 30, 2025. It is not representative of all stakeholder input and is a snapshot of preliminary data only.

Youth Priority Populations



*Data Limitation: The qualitative information received to date is incomplete and represents only a portion of the feedback from focus groups between April – June 30, 2025. It is not representative of all stakeholder input and is a snapshot of preliminary data only.

Adult Priority Populations



*Data Limitation: The qualitative information received to date is incomplete and represents only a portion of the feedback from focus groups between April – June 30, 2025. It is not representative of all stakeholder input and is a snapshot of preliminary data only.

Recommendations

“We don’t know the words. Having someone who understands the culture and the language will be better to get more stuff out of therapy rather than a cookie-cutter approach.”

“There will be no prevention happening without resources.”

“There’s a trust problem.”

*Data Limitation: The qualitative information received to date is incomplete and represents only a portion of the feedback from focus groups between April – June 30, 2025. It is not representative of all stakeholder input and is a snapshot of preliminary data only.

Recommendations

Suggestions to improve the system of care:

- Increase representation and cultural competence
- Provide specific trainings, programs, and services
- Increase outreach and engagement, awareness and education, and build community trust
- Increased spending on behavioral health, community-based organizations, transportation, etc.

Workgroup Updates

Workgroup Kick-Offs

Behavioral Health Services and Supports (BHSS)

Kick Off Meeting - July 9, 2025,
from 1:00 to 2:30 pm

Number of Attendees - 44

Items Reviewed - Overview and
orientation to the new BHSS
category

Next Meeting - August 4, 2025
from 1-2:30pm, 750 The City
Drive, Orange CA 92688

Full-Service Partnership (FSP)

Kick Off Meeting - June 25, 2025,
from 3:30 to 5:00 pm

Number of Attendees -33

Items Reviewed- FSP Overview and
Orientation

Next Meeting- July 23, 2025, from
2:30-4:00 pm, TEAMS

Housing

Kick Off Meeting - June 26, 2025,
from 9:30 to 11:00 am

Number of Attendees - 24

Items Reviewed- Housing
Interventions Overview and
Orientation

Next Meeting- July 24, 2025, from
9:30-11:00 am, 750 The City
Drive, Orange CA 92688

Goals of Workgroups - Provide recommendations to help identify gaps and inform systems of care

Why join a BHSA Workgroup?

- This collaborative process will ask consumers, system partners, professionals and other stakeholders to work together to create a more equitable system of care.
- These workgroups will assist with our community program planning to ensure services, treatment and support programs are strategically aligned with community priorities, resources are used effectively, and desired outcomes are attained.

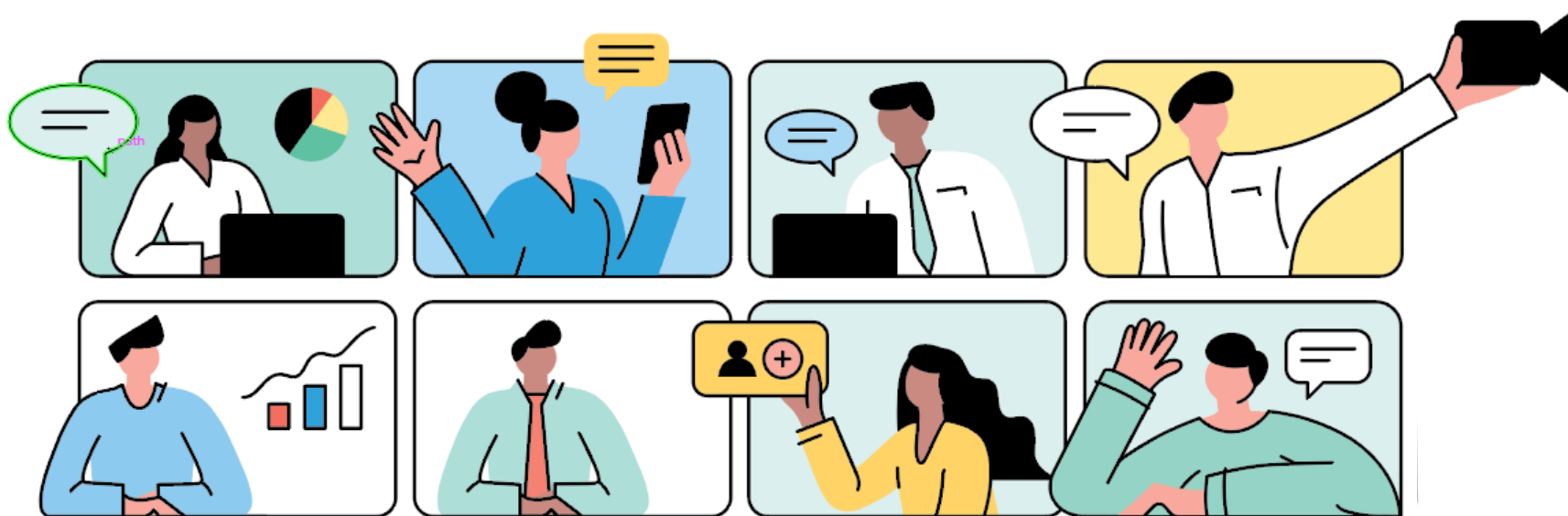
YOU can help to **improve the health and well-being of the community.**

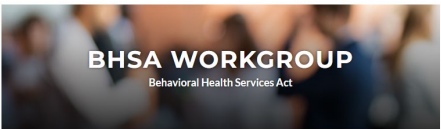
YOU can help **identify community-defined needs.**

YOU can help **develop strategies to address those needs.**

Next Steps


Interested? Email your workgroup interest to BHSA@ochca.com!





BHS WORKGROUP
Behavioral Health Services Act

WE NEED YOUR INSIGHT!



Scan QR code to find
out more about our
upcoming
workgroup meetings.

BH Integrated Plan Community Planning Timeline

Jan – March 2025

Plan & Assess

Community planning PAC Kick-Off, listening and data sessions throughout county, co-chair(s) recruitment and selection process

Listening and Data Overview Sessions

April – May 2025

Committees & Focus Group

PAC (April) data summary, committee co-chair selected and announced, committee work begins; BHAB CPP report out (April)

Workgroups Start

June – Sept 2025

Program Planning

PAC (July) - Committee Report Outs, review for program/system intersectionality, finalize draft programs, align evaluation plans/metrics with state requirements; BHAB CPP report out (July), Community Forums, and Community Needs Survey

Community Forums

Oct – Dec 2025

Draft Plan Review

Draft Plan finalized, internal review, overview at BHAB, PAC (October) and throughout county; CPP report out at BHAB (October)

Jan – March 2026

Approve & Post

DHCS approval, 30 day posting, continue Plan overview meetings during posting, implementation planning, setting up administrative infrastructure

April – May 2026

Public Hearing

Host Public Hearing, implementation planning, establishing admin infrastructure (RFPs, contract modification development, set up of financial tracking mechanisms, evaluation systems, policies and procedures, etc.)

June 2026

Board Approval

Approval, implementation continues Upon approval



Community Program Planning Opportunities

Community Forums

Orange County HCA is looking for your input on the future of BHS. Join other community members in identifying needed services for individuals, their families and loved ones affected by mental health and substance use challenges.



NORTH COUNTY

Tuesday | July 22 @ 9-11:30 am
Fullerton Community Center
340 W Commonwealth Ave, Fullerton, CA 92832



CENTRAL COUNTY

Tuesday | July 29 @ 2-4:30 pm
Delhi Center
505 E Central Ave, Santa Ana, CA 92707



SOUTH COUNTY

Wednesday | July 30 @ 4-6:30PM
Laguna Hills Community Center
25555 Alicia Pkwy, Laguna Hills, CA 92653

Registration
REQUIRED



Access QR code
for session
information!



Or access
information
on the

[BHSA website](#)

Stakeholder Feedback



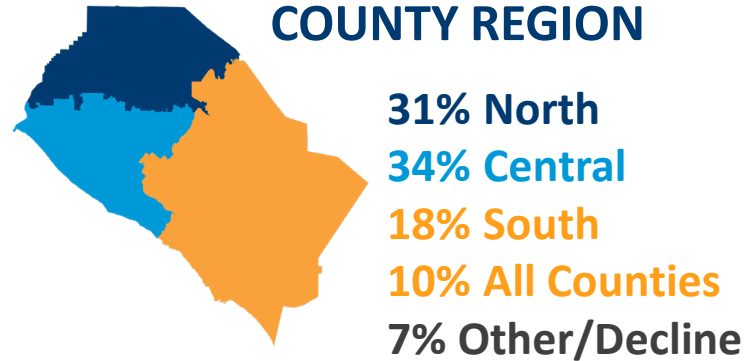
Community Program Planning

Demographics for January thru June 2025

ATTENDEES Through June



COUNTY REGION



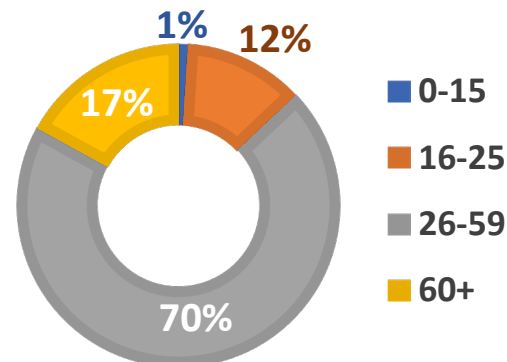
CONSUMER/FAMILY MEMBER



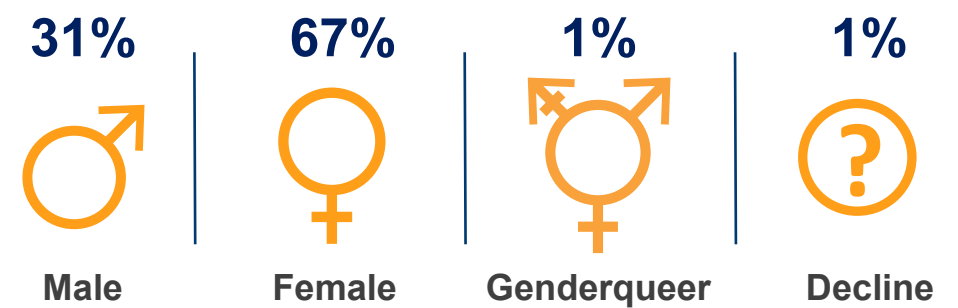
MILITARY SERVICE



AGES (YEARS)



GENDER IDENTITY



Community Program Planning

Demographics for January thru June 2025

PRIMARY LANGUAGE

73%	English
12%	Spanish
4%	Vietnamese
2%	Farsi
1%	Korean
1%	Arabic
1%	ASL
1%	Khmer
1%	Decline to Answer
3%	Other



Race/Ethnicity



27%	Caucasian/White
27%	Hispanic/Latino
23%	Asian
10%	American Indian or Alaskan Native
7%	African American/Black
3%	Middle Eastern/North American
2%	Other Race/Ethnicity
1%	Prefer not to answer

Community Program Planning (con't)

Stakeholder Groups*

PROVIDERS	
Older Adult Providers	41
Homelessness Services Agencies	28
Independent Living Centers	10
Mental Health Services Organizations	116
SUD treatment organizations	29
Regional Centers	6
Veterans Organizations	11
Other Services Providers	21

COMMUNITY MEMBER/ORGANIZATIONS	
Consumers of Mental Health Services	99
Consumers of SUD disorders treatment	19
Families of consumers (all ages) who receive mental health services	55
Families of consumers (all ages) who receive substance use disorder services	28
Veterans or Military Service	10
Community Based organization/Non-profit	75
Lived experience with homelessness	25
Domestic violence and/or sexual abuse representatives	21

PUBLIC ENTITIES	
Education	26
Public safety agencies	6
County Social Services agencies	14
Juvenile justice agencies	4
Tribal and Indian Health Program Representatives	4
Disability insurers/Social Security	5

HEALTH CARE ORGANIZATIONS	
First responders	8
Health Care Service plans	16
Hospitals	13
Public Health organizations	31
Primary Care	13

*Each participant can select more than one category.

April 2025 PAC Feedback



Do you feel that we achieved the goals outlined in the meeting agenda?	50%	41%	6%	0%	2%
Did you feel engaged at this meeting?	41%	48%	7%	0%	4%
Do our meetings give you space to interact with fellow community members in ways...	41%	41%	9%	7%	2%
Were you able to ask questions and voice your opinions?	48%	37%	13%	0%	2%
Was everyone given the chance to contribute their ideas?	46%	48%	4%	0%	2%
Overall, I am satisfied with this meeting.	46%	50%	0%	2%	2%

Networking

Where Do You Belong?

Find Your Behavioral Health Workgroup

What is your top priority when it comes to Behavioral Health?

A

Stabilization & Long-Term Living Solutions

Are you most interested in:

- Affordable housing development
- Addressing homelessness and behavioral health
- Navigating housing systems



You align with
Housing

B

Coordinated Care with Wraparound Support

Are you most passionate about:

- Supporting high-need individuals with integrated services
- Long-term engagement and case management
- Collaborating across disciplines



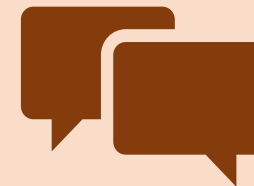
You align with
Full-Service Partnerships

C

Connecting People to Service & Reducing Stigma

Are you driven to improve:

- Access to therapy, peer services, or crisis response
- Community-based support and prevention
- Public understanding of behavioral health resources



You align with
Behavioral Health Support Services

Conversation Starters

Did You Know?



Conversation Starter:

“What barriers have you seen in connecting people to care?”

Did You Know?



Conversation Starter:

“Tell us about a time you helped someone navigate a behavioral health service.”

Did You Know?



Conversation Starter:

“What change would you most like to see in the behavioral health system of care?”

Satisfaction Survey



Thank you for your participation.

For questions or to request a meeting, please contact
Michelle Smith at msmith@ochca.com
or call (714) 834-3104

For BHSA information
please call (714) 834-3104 or email bhsa@ochca.com

assess.

discuss.

improve.

#BHSA

Next meeting, Thursday

October 16, 2025

Scan the QR code below for more information



Stay Connected!



www.ochalthinfo.com

