

STATE OF PUBLIC HEALTH IN ORANGE COUNTY

Regina Chinsio-Kwong, DO
County Health Officer
OC Health Care Agency

May 20, 2026

DISCLOSURE STATEMENT

The speakers for this activity have no relevant financial relationships or disclosures with any commercial interests related to the content of this presentation.

PUBLIC HEALTH IN TRANSITION RESILIENCE AND REINVENTION PROTECTING PUBLIC HEALTH IN A CHANGING WORLD





Hope. Heal. Thrive.

أمل. تعافي. إزدهار.

اميد. التيام. شكوفايي.

희망. 치유. 번영.

Надежда. Восстановление. Благополучие.

希望。疗愈。发展。

Esperanza. Sanación. Prosperidad.

心懷希望。療癒身心。向陽而生。

Hy vọng. Hồi phục. Vươn mình.



Hope, Heal, Thrive through
**Community
Connections**





WHAT WE WILL COVER TODAY

Health in Orange County Today

- **OC Health Care Agency**
- Local Trends

Positive Strides

- Enhanced communication, structural modernization
- Local Highlights
- Partnerships and Community

During this time of great changes, the **OC Health Care Agency** remains focused on partnering with our community to improve your quality of life wherever we meet.



- Administrative Services
- Behavioral Health Services
- Correctional Health Services
- Public Health Services
- Specialized Medical Services

Safeguarding Privacy

County-HCA Information Technology safeguards critical health data and IT infrastructure, ensuring compliance, continuity, and resilience across public, behavioral and environmental health care operations. By protecting systems and information, it upholds and strengthens trust, privacy, and service availability for both county government and residents.



Saving Lives

A man sitting on a park bench feels sudden pain in his chest and a friend calls 9-1-1. While being driven in an ambulance we've inspected to a nearby hospital we've designated, he receives life-giving medical care by paramedics who are following the medical policies we've established and Emergency Medical Technicians (EMT/s) we've certified.



Giving New Families a Great Start

A pregnant woman or parenting person learns how to cook nutritious meals and is provided resources on accessing food resources for the family. We provide health education including, prenatal and post-natal topics, safe sleep habits for infants, drowning prevention, harmful effects of second-hand smoke and traveling safely in a car seat. We provide nutrition information and the benefits of breastfeeding as well as the importance of childhood vaccines. We also issue the newborn's official birth certificate.



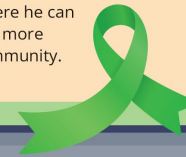
Connecting Health, Wellness and Other Resources

Your behavioral health and wellness depend on many things, including knowing where to go or who to call when you need help. Whether you are a parent, child, student or young adult, bad days happen. But you are not alone You can find resources near you and that meet your needs or connect with a navigator to help, by calling us at 1-855-OC-Links and gets directly connected to a program that can help.



Combating Stigma

A man attends a local event and starts talking with people who are wearing lime green ribbons. He learns they're supporting and educating on behavioral health awareness; and for the first time he doesn't feel embarrassed about the way he's been feeling. They direct him to OCNavigator.org where he can explore more resources and learn more about the help available in his community.



Helping Our Local Businesses

An entrepreneur looking to build or remodel a food facility or public pool, saves time by using our Electronic Plan Submittal services. Restaurants, markets, bars, cottage foods, or public pools that need renewed annual Health Permits, along with fees for body art, and underground storage tanks can also be paid through our online portal.



Preventing Disease Spread and Treatment

A nurse screens a new arrestee for medical, mental health, and substance use issues, and discovers an infectious disease. We diagnose, treat, and ensure they are linked to services before release.



Protecting Your Safety

A surfer catches a wave of clean ocean water that we monitor and test. She dries off and grabs a sandwich made with ingredients that have been safely stored and prepared in a beach café kitchen we inspect.



STATS

41,133
Unique Behavioral Health Service Clients Served

43,789
OC Links Calls/Chats

10,892
mobile crisis field dispatches

12,319
Naloxone distributed

6,464
Individuals served- Community & Nursing Services

6,898
Communicable Disease cases Investigated

455
Outbreaks Investigated

211,761
Public Health Laboratory- Lab Samples Analyzed

2,893
Pulmonary disease patients served

5,538
STI and HIV patients served

26,420
Facility permits issued (retail food, markets, schools)

92,269
Correctional Health Services- Clinician Encounters

516/1,584
Conservatorship referrals/being managed

11,253
California Children's Services - Children Served

188,725
911 calls for Emergency Medical Services with Ambulance Transports

ORIGINS OF STATE OF PUBLIC HEALTH ADDRESS



Regina Chinsio-Kwong, DO
"Dr CK"
County Health Officer



Almas Shaikh, MD, MPH, FACS
 DEPUTY HEALTH OFFICER
 INTERIM EMS MEDICAL DIRECTOR

Anissa Davis, MD, MPH
 DEPUTY HEALTH OFFICER & MEDICAL DIRECTOR
 COMMUNICABLE DISEASE CONTROL DIVISION

NAVIGATING CARE IN OC

- Orange County has an excellent health care system — and it works best when we all use it wisely.
- **Use the Emergency Room for Life-Threatening Emergencies**
 - When the Emergency Rooms are used for non-emergencies, they become crowded — which delays care for people with serious needs and increases costs for everyone.
- **Choose the right level of care for your needs**
 - Going to the right place can save you time, money, and stress.
- **Know your health coverage**
 - Understand where you can go and what services are covered.
- **Keep your insurance active**
 - Stay up to date on paperwork, renewals, and required information.
- **Flyer and resource Toolkit - Coming Soon**

ORANGE COUNTY HEALTH CARE AGENCY
Your Health Care Guide in Orange County
 Find the right care, at the right place, at the right time — for everyone in OC, with or without insurance.
 Emergency: 911 | Crisis Line: 988 | Help: 211 | ochealthinfo.com

1 Why Using the Right Care Matters for All of Us
 Orange County has a wonderful health care system — but it only works well when we all use it wisely. When the Emergency Room is used for things that are not emergencies, it creates real problems for our whole community.

The ER Gets Too Full
 When the ER fills up with non-emergency patients, people having heart attacks or strokes have to wait for a bed. That wait can cost someone their life.

Not Enough Beds
 Hospital beds are limited. When non-emergency patients take them, there is no room for people who truly need intensive medical care right now.

3 Where to Go for Care — Know Your Options
 Always start with the simplest care that fits your need. Save the Emergency Room for true life-threatening situations — it makes a real difference for your neighbors.

Telehealth & Virtual Visits — Available at Almost Any Clinic
 Telehealth is not a separate type of clinic — it is a way to see your care team from home by phone or video. Your primary care clinic, community health center, hospital, specialist, or mental health provider may all offer telehealth. **Always call your clinic or check their website first** to see if a virtual visit works for your situation — it can save you a trip.

| TYPE OF CARE | WHEN TO USE IT | EXAMPLES | COST & INSURANCE |
|--|---|---|---|
| 1 Primary Care Clinic Your regular doctor | Checkups, vaccines, and managing ongoing health like diabetes or high blood pressure. | Annual physical, blood pressure check, diabetes care, prenatal visits, vaccines. | Private insurance, Medi-Cal, Medicare. Call ahead to confirm they accept your coverage. |
| 2 Community Health Center Everyone welcome | Full-service care for EVERYONE — medical, dental, vision, mental health, and social services. No one turned away. | Primary care + dental + vision + mental health + help with food, transportation, housing referrals. | Medi-Cal, Medicare, private insurance. No insurance? Sliding-scale fees — some visits are free. |
| 3 Free Clinic No insurance needed | Volunteer-run clinics for uninsured patients. Basic primary care, health screenings, and referrals at zero cost. | Checkups, basic lab work, prescription help, referrals to specialists. | 100% FREE. No insurance required. For uninsured and low-income patients. |
| 4 Urgent Care / Walk-in Same day, no appt | Same-day care for illness or injury that needs attention today — but is NOT life-threatening. | Sprain, minor cut, ear or eye infection, flu, fever, rash, minor burns, urinary infection. | Private insurance, Medi-Cal, Medicare. Coverage varies — always call ahead before going. |
| 5 Specialty Clinic | Focused care for a specific condition. Your primary doctor will refer you. | Heart (cardiology), skin (dermatology), hormones (endocrinology), OB-GYN, cancer | Private insurance, Medi-Cal, Medicare. Pre-authorization often required — ask your doctor. |

ER **Emergency Room**
 Call 911 first

LIFE-THREATENING ONLY. Call 911 — paramedics will come to you and take you to the right hospital fast.

Chest pain, cannot breathe, stroke, unconscious, severe bleeding, major injury, head trauma.

All patients seen regardless of insurance. ER bills are very high. OC has 20+ Emergency Receiving Hospitals.

Need help finding care?

Call **211** anytime — free, confidential, available in many languages.

ochealthinfo.com ocnavigator.org coalitionoc.org findhelp.org

REMAIN INFORMED - CALFRESH CHANGES

Did you know ..

- 1 in 10 in Orange County receive CalFresh Benefits
- 1 in 3 in Orange County were on Medi-Cal... *and now 1 in 4 in OC are on Medi-Cal*
- Many changes are occurring over the next few years!



Starting April 1, 2026, certain noncitizens will no longer qualify for CalFresh.



[Orange County Social Services Agency-Changes to Medi-Cal and CalFresh](#) | [County of Orange Social Services Agency](#)

Visit 211oc.org or **call 2-1-1** to be connected with other resources.

For the full list of who will no longer be eligible, please visit ssa.ocgov.com

REMAIN INFORMED - MEDI-CAL CHANGES

What Medi-Cal Members Need to Know Program Changes (2026-2028)

Good News- Most Medi-Cal members *won't* see changes

Med-Cal members can still:

- See a doctor or go to the hospital
- Get emergency help
- Get medication
- Get support for mental health or addiction services
- Have checkups and vaccines to stay healthy
- Get long-term care if needed
- Get rides to appointments if needed
- See a dentist
- Get eye exams and glasses

2026

- **July 1**
 - Change in Dental Care Coverage for some members
 - People can get care for Emergency Medical Services
 - Serious Tooth Pain, Infections, Tooth Extractions
- **October 1**
 - Immigration Status Classification Changes

2027

- **January 1**
 - Monthly Premiums Start
 - Age 19-64
 - Work Rules
 - Six Month Eligibility Checks
 - Less time to get help paying for old medical bills

2028

- **January 1**
 - Copayments (small fee) start

Visit DHCS webpage for more information
<https://www.dhcs.ca.gov/Medi-Cal/Pages/changes.aspx>

HOW TO KEEP YOUR MEDI-CAL

- **First and foremost- Continue your care!**
 - Keep going to your clinical appointments and ask about available telehealth services.
- Visit the [DHCS website](#) and follow DHCS social media channels for updates.
- **Keep you [Medi-Cal information updated](#)** so you don't miss important notices sent by mail, text or email.
- **Respond quickly to letters from your health plan or local county Medi-Cal office.**
- **Know your renewal date** and renew your Medi-Cal online or work with your local county Medi-Cal office.

Resources:

- **DHCS**

- www.dhcs.ca.gov
- 1-800-541-5555

- **CalOptima**

- www.caloptima.org/getcare
- 1-888-587-8088 (TTY 711)

- **Kaiser**

- <https://healthy.kaiserpermanente.org/southern-california/get-care>
- 1-855-839-7613





CALIFORNIA 2026 REPORT FINDINGS

Californians are living longer:

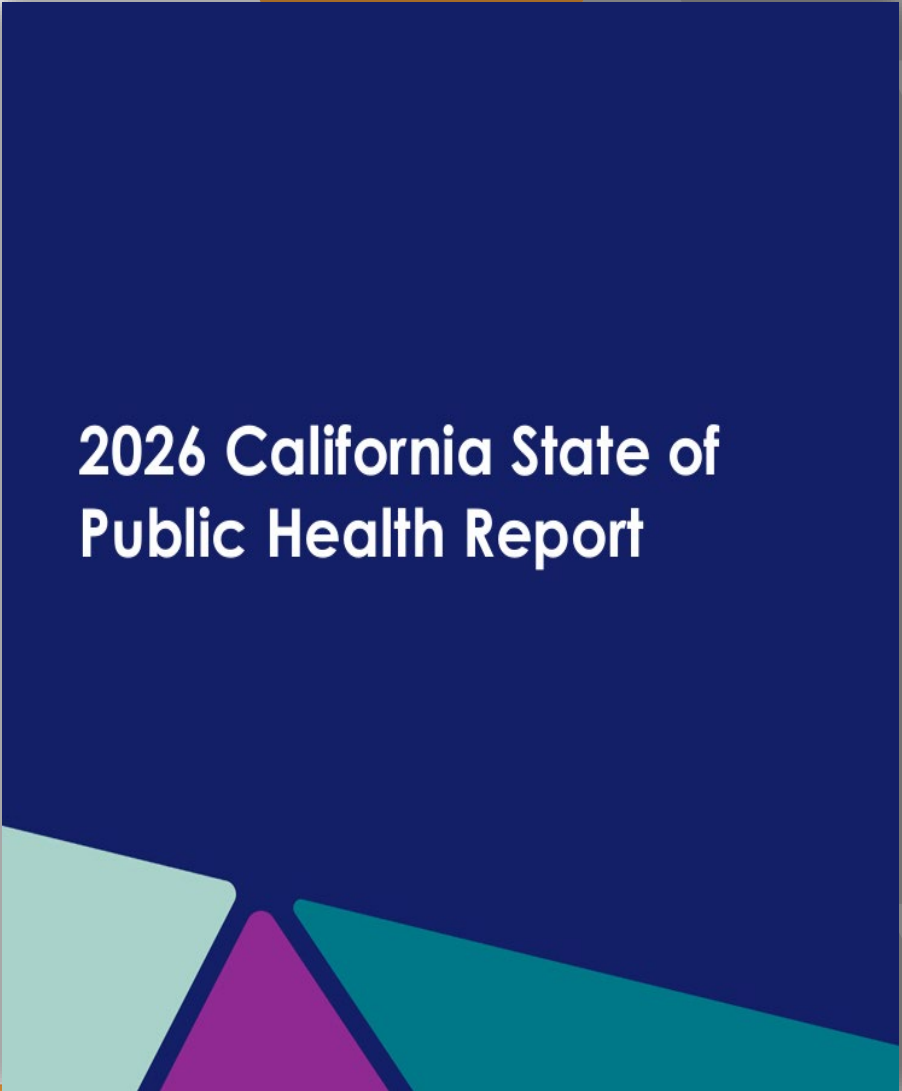
- Life expectancy is at a record high.
- Deaths from cancer and heart disease are at record lows.
- Drug overdose deaths remain a leading cause of death, but after years of increase:
 - Overdose deaths finally went down in 2024 after rising for 14 years.
 - Rates of sexually transmitted infections, like syphilis, are dropping.

Concerning trends

- Since 2000, death rates increased among 25–44-year-olds (driven by behavioral health and injury related causes - especially drug overdose), but decreased among all other groups.
- Pregnancy related mortality have worsened.
- Congenital syphilis rates decreased in 2023 and 2024, however remain higher than a decade ago.
- Kidney disease deaths increased since 2000.
- Valley fever cases in 2024 were the highest on record.

Areas the State is working on improving include:

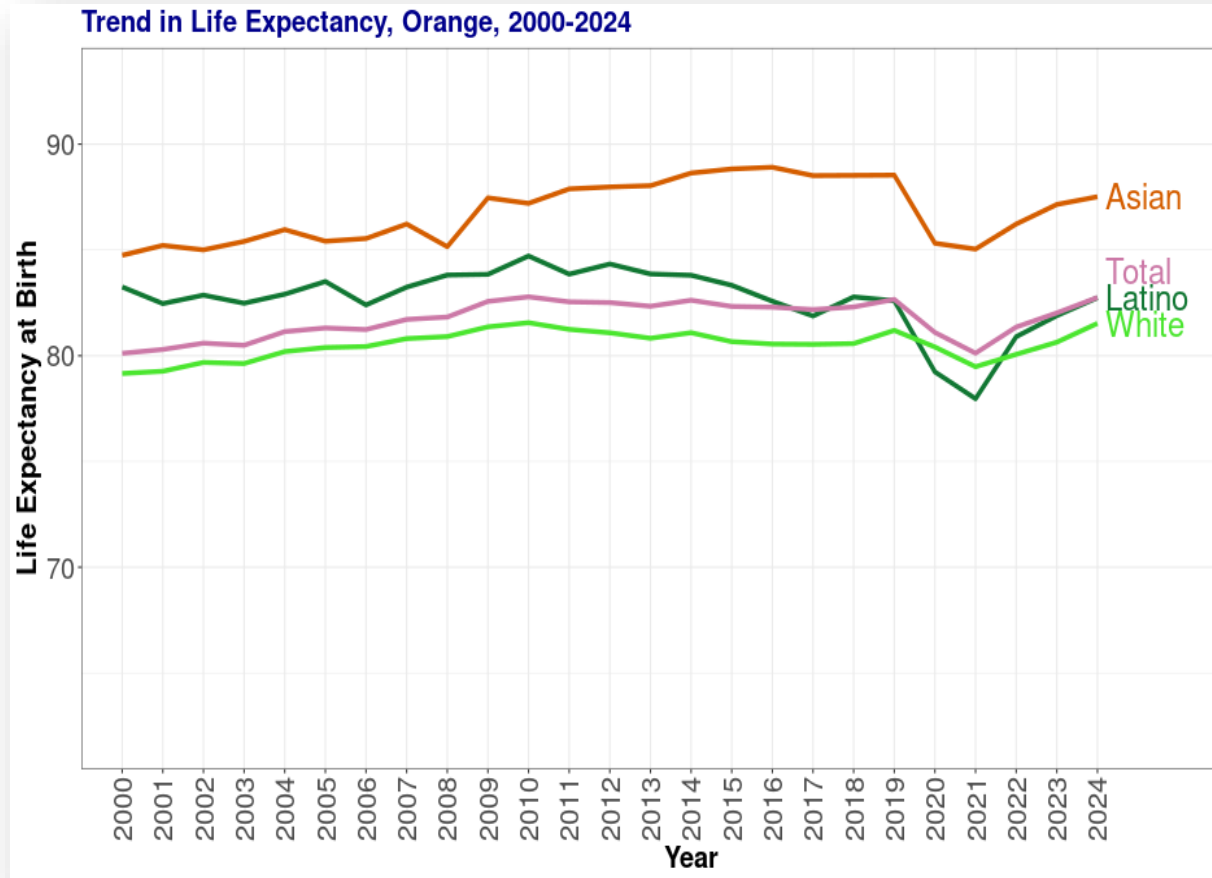
- Prevention and promotion of behavioral health.
- Pregnancy-related deaths and complications .
- Life expectancy and health differences that are preventable.



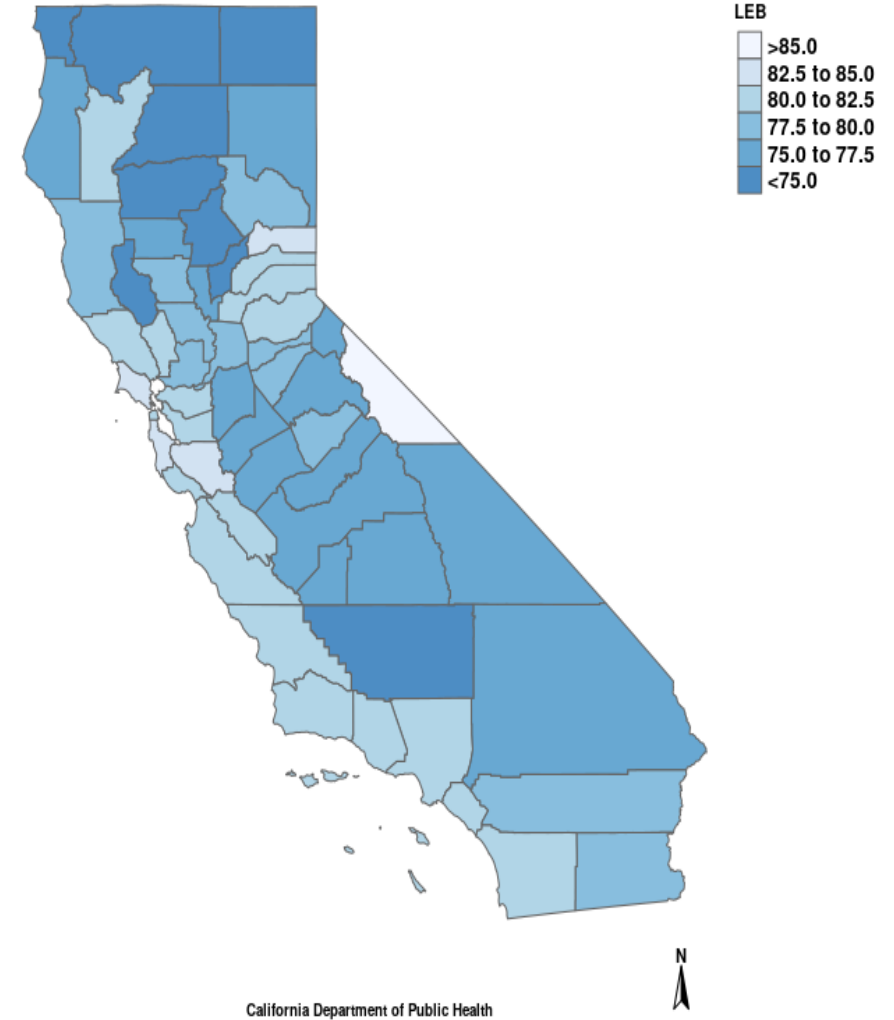
Link:
<https://www.cdph.ca.gov/Programs/OPP/Pages/State-of-Public-Health-Report.aspx>

LIFE EXPECTANCY

Life expectancy continues to rise since the low point in 2021 reaching 82.75 years in 2024 (nearing the peak in 2010 of 82.78).



Life Expectancy at Birth

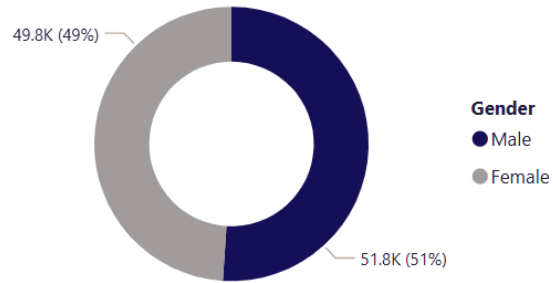


From CDPH California Community Burden of Disease Engine

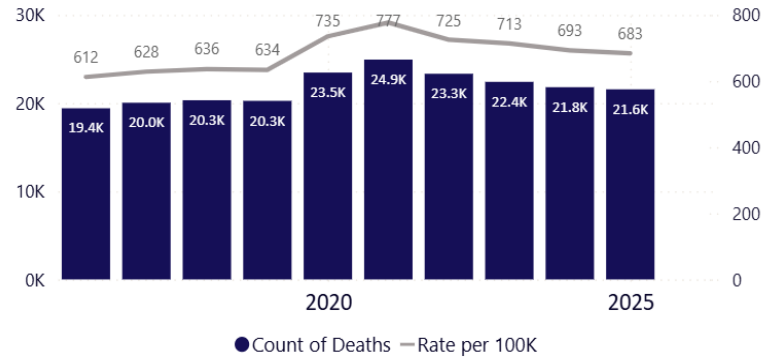
OC LEADING CAUSES OF DEATH

2025

Count by Gender



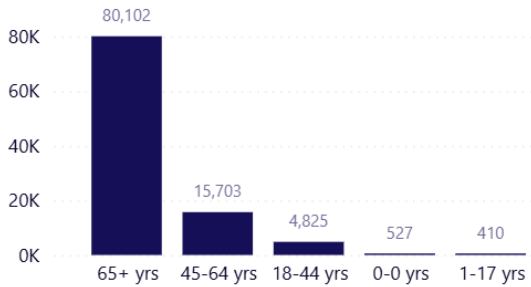
Count of Deaths and Death Rate in Orange County



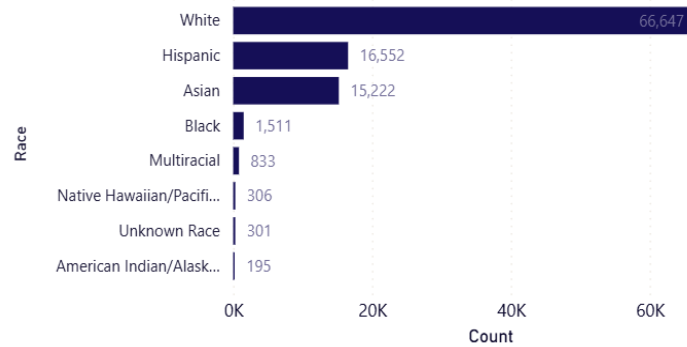
2024

2025

Count by Age Group



Count by Race



Cause of Death

Count

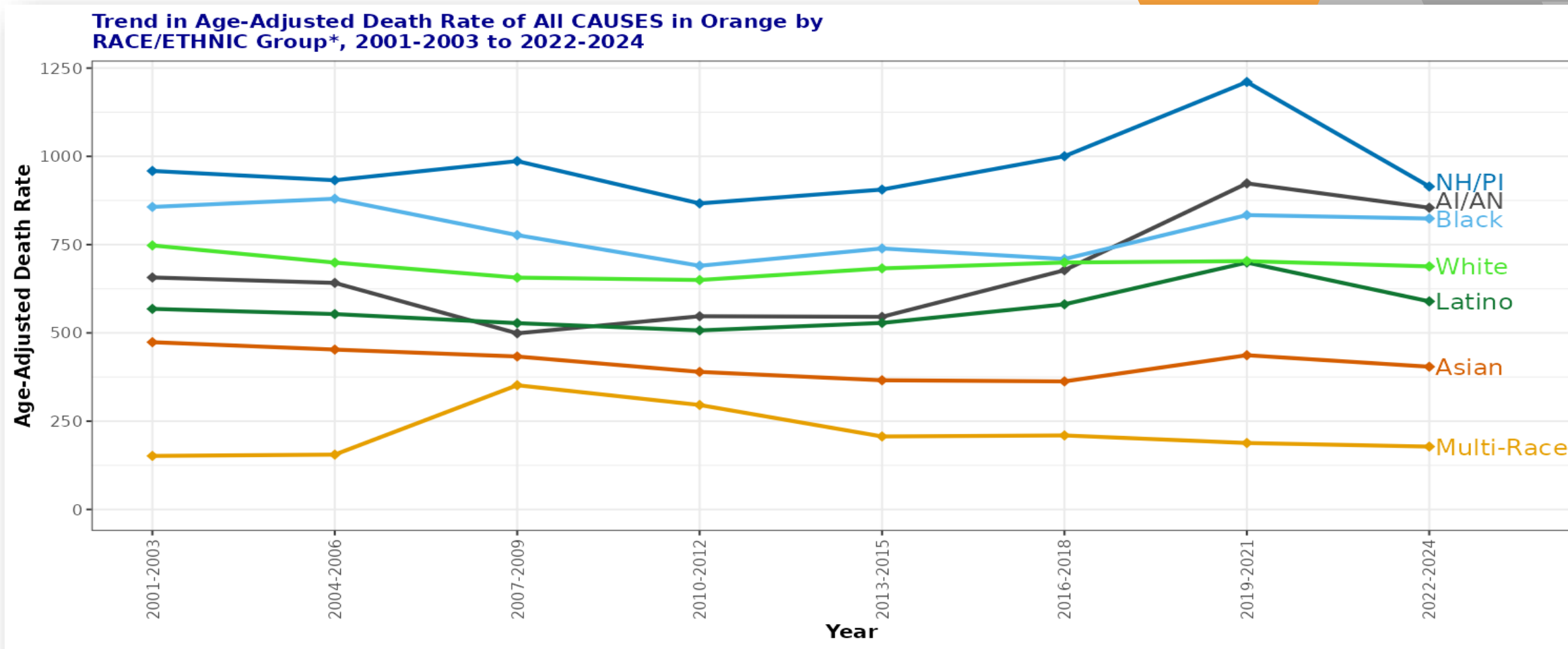
| | |
|---|--------|
| Diseases of heart | 24,420 |
| Malignant neoplasms | 23,584 |
| Alzheimers disease | 7,154 |
| Cerebrovascular diseases | 6,969 |
| Accidents (unintentional injuries) | 4,681 |
| Chronic lower respiratory diseases | 4,626 |
| Influenza and pneumonia | 2,761 |
| Diabetes mellitus | 2,719 |
| Chronic liver disease and cirrhosis | 2,000 |
| Nephritis, nephrotic syndrome and nephrosis | 1,917 |

Cause of Death

Count

| | |
|---|--------|
| Diseases of heart | 24,164 |
| Malignant neoplasms | 23,361 |
| Alzheimers disease | 7,175 |
| Cerebrovascular diseases | 6,961 |
| Chronic lower respiratory diseases | 4,588 |
| Accidents (unintentional injuries) | 4,483 |
| Diabetes mellitus | 2,786 |
| Influenza and pneumonia | 2,755 |
| Chronic liver disease and cirrhosis | 1,971 |
| Nephritis, nephrotic syndrome and nephrosis | 1,923 |

AGE ADJUSTED DEATH RATE- ALL CAUSES- OC



NH/PI- Native Hawaiian/Pacific Islanders AI/AN- American Indian/Alaskan Native

[Table from CDPH California Community Burden of Disease Engine](#) Life Course

2000-2024 Trends in Top 10 Public Health Level Conditions (based on Crude Death Rate per 100,000 population in 2024), Orange

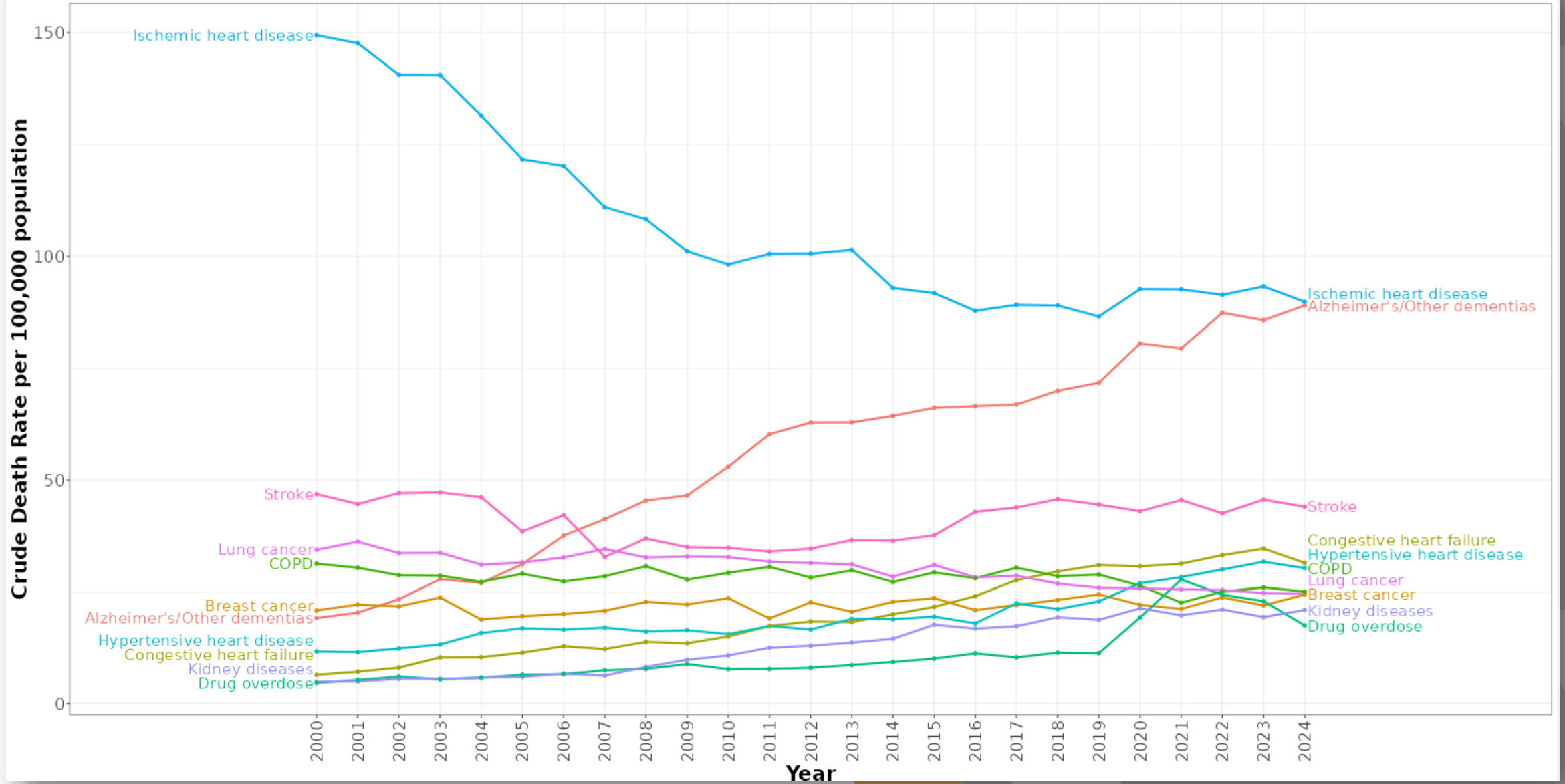
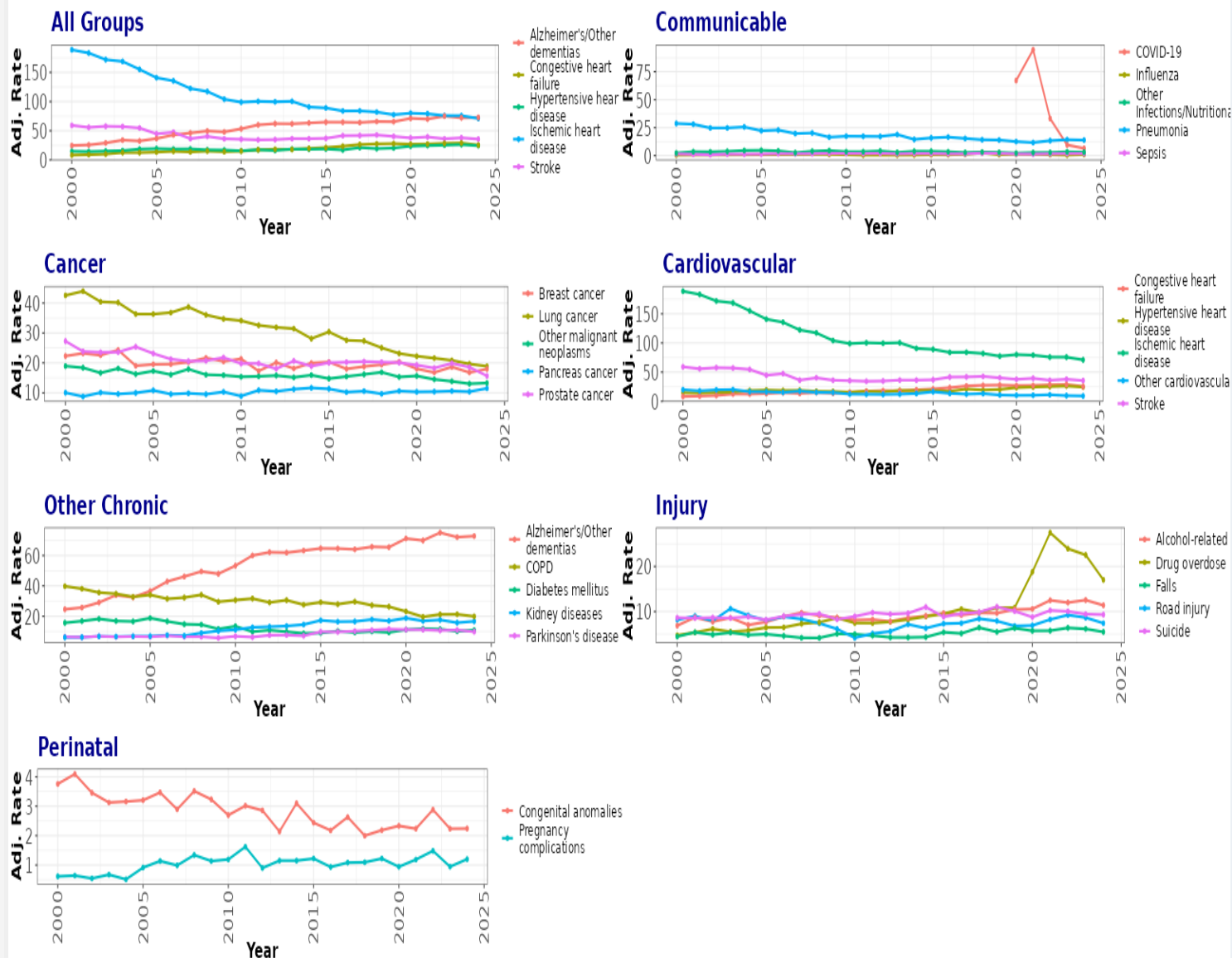


Table from CDPH California Community Burden of Disease Engine Life Course

KEY ORANGE COUNTY HEALTH FINDINGS

- All-Cause mortality has been trending downward since the peak in 2021.
- 2024 heart disease age-adjusted rate dropped to lowest levels.
- Cancer rates locally have been on the rise.
- Drug overdose deaths have decreased from a peak of 919 in 2021 down to 569 in 2024.
- Opioid deaths have also declined from 746 in 2021 to 411 in 2024.
- Trends shown as Age-Adjusted Death Rates from CDPH [California Community Burden of Disease Engine](#)

Trends In Top Public Health Conditions (by Broad Condition Groups) in Orange County, 2000-2024



Leading Causes of Death Across the Life Course in Orange, 2024

| | | 0 - 4 | 5 - 14 | 15 - 24 | 25 - 34 | 35 - 44 | 45 - 54 | 55 - 64 | 65 - 74 | 75 - 84 | 85+ |
|---------------|---|-------------------------|--------|---------|-----------------|-----------------|--------------------------|----------------------------|------------------------|------------------------|----------------------------|
| Female | | | | | | | | | | | |
| Ranking | 1 | Pregnancy complications | * | Suicide | Drug overdose | Drug overdose | Drug overdose | Breast cancer | Ischemic heart disease | Alzheimer's disease | Alzheimer's disease |
| | 2 | Congenital anomalies | * | * | Suicide | Breast cancer | Breast cancer | Ischemic heart disease | Lung cancer | Ischemic heart disease | Ischemic heart disease |
| | 3 | * | * | * | Road injury | Alcohol-related | Ischemic heart disease | Other cancers | Stroke | Stroke | Stroke |
| | 4 | * | * | * | Alcohol-related | * | Colon and rectum cancers | Alcohol-related | Alzheimer's disease | Lung cancer | Congestive heart failure |
| | 5 | * | * | * | * | * | Stroke | Lung cancer | Breast cancer | COPD | Hypertensive heart disease |
| Male | | | | | | | | | | | |
| | 1 | Congenital anomalies | * | Suicide | Drug overdose | Drug overdose | Drug overdose | Ischemic heart disease | Ischemic heart disease | Ischemic heart disease | Alzheimer's disease |
| | 2 | Pregnancy complications | * | * | Suicide | Alcohol-related | Ischemic heart disease | Drug overdose | Lung cancer | Alzheimer's disease | Ischemic heart disease |
| | 3 | * | * | * | Road injury | * | Alcohol-related | Alcohol-related | Stroke | Stroke | Congestive heart failure |
| | 4 | * | * | * | Alcohol-related | * | Suicide | Hypertensive heart disease | Alzheimer's disease | Lung cancer | Stroke |
| | 5 | * | * | * | * | * | Colon and rectum cancers | Stroke | Pancreas cancer | COPD | Hypertensive heart disease |
| | | 0 - 4 | 5 - 14 | 15 - 24 | 25 - 34 | 35 - 44 | 45 - 54 | 55 - 64 | 65 - 74 | 75 - 84 | 85+ |

■ Cardiovascular
 ■ Cancer
 ■ Other Chronic
 ■ Injury
 ■ Perinatal

*Data suppressed due to small numbers

Table from CDPH California Community Burden of Disease Engine Life Course

Deaths by Cause by Race/Ethnicity, 2022-2024
In Orange

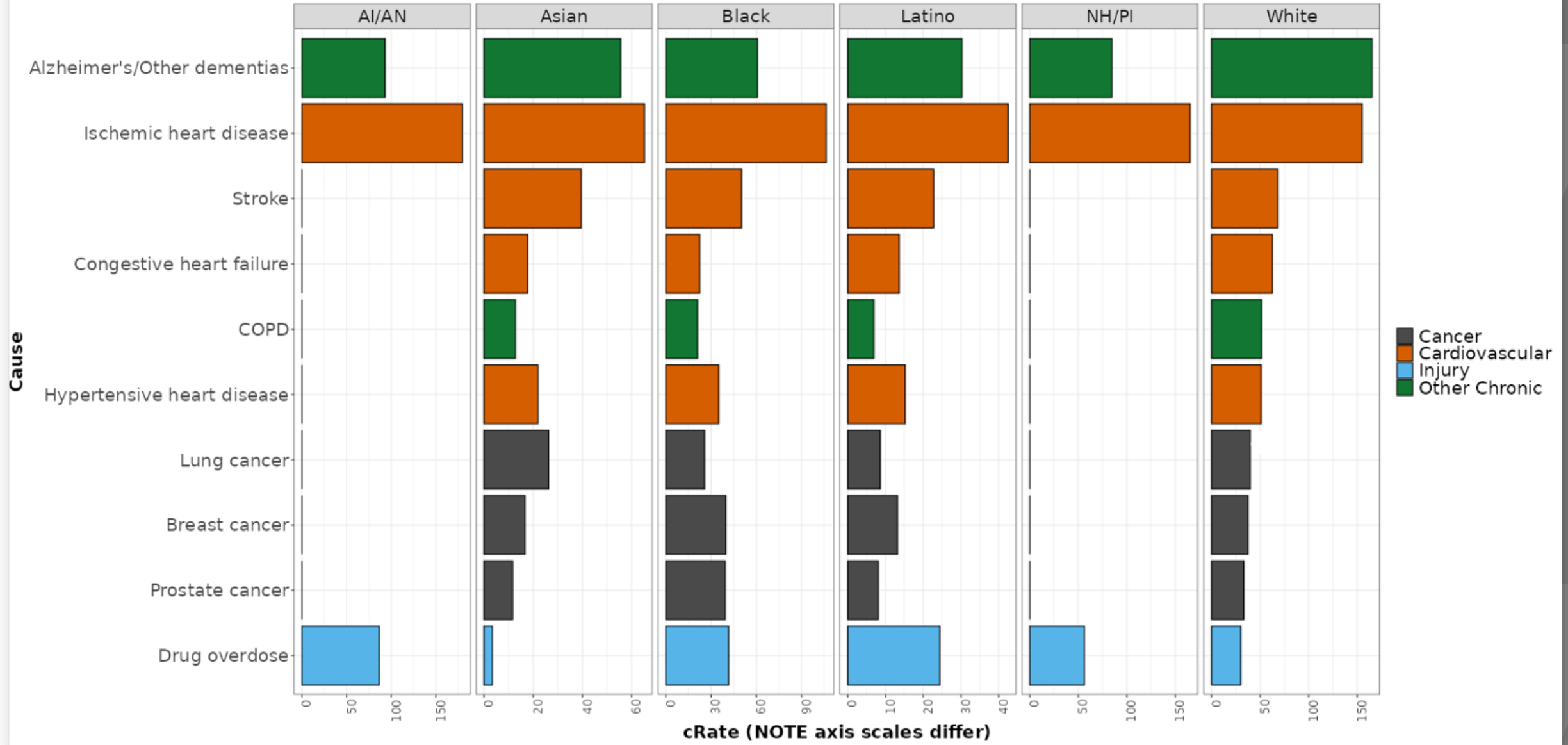


Table from CDPH California Community Burden of Disease Engine



Age Specific Conditions

Maternal-Infant and Child Health
Adolescents and Young Adults

Chronic Conditions

Infectious Diseases



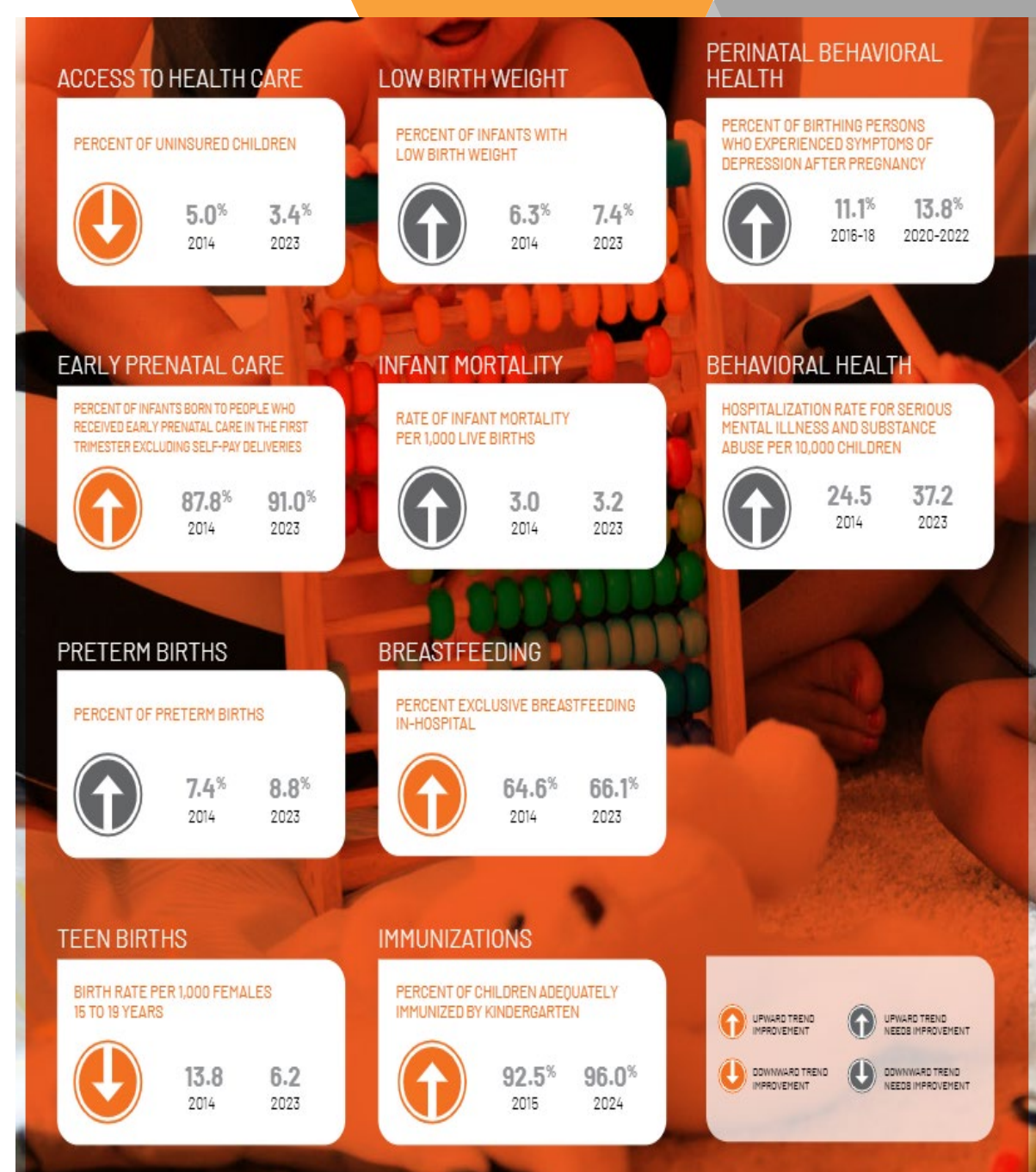
31ST ANNUAL REPORT ON CONDITIONS OF CHILDREN IN ORANGE COUNTY:

Positive Improvements

- High percentage of children adequately immunized by kindergarten
- Lower teen births
 - 13.8 per 1,000 15–19-year-olds in 2014
 - 6.2 per 1,000 15–19-year-olds in 2023
- Higher percentage of exclusive breastfeeding in the hospital
- Decreased uninsured

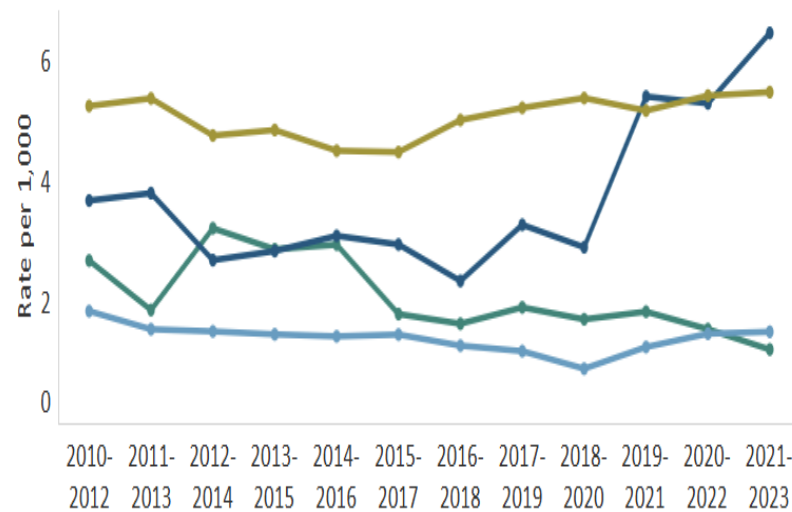
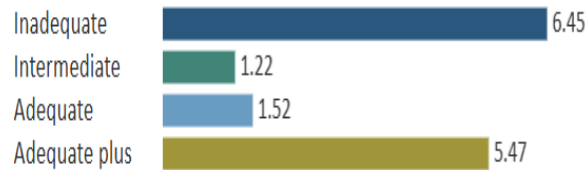
Areas Needing Improvement

- Behavioral health support
- Pre-term birth, infant birth weight, and infant mortality



A DEEPER DIVE INTO INFANT & MATERNAL HEALTH

Infant Mortality by Prenatal Care (Adequacy of Utilization), Orange County, 2021-2023



Areas to Focus on to Improve Infant and Maternal outcomes

- Pre-Pregnancy and Early Pregnancy Health
- Maternal Health
- Support Maternal and Family Health and Mental Health

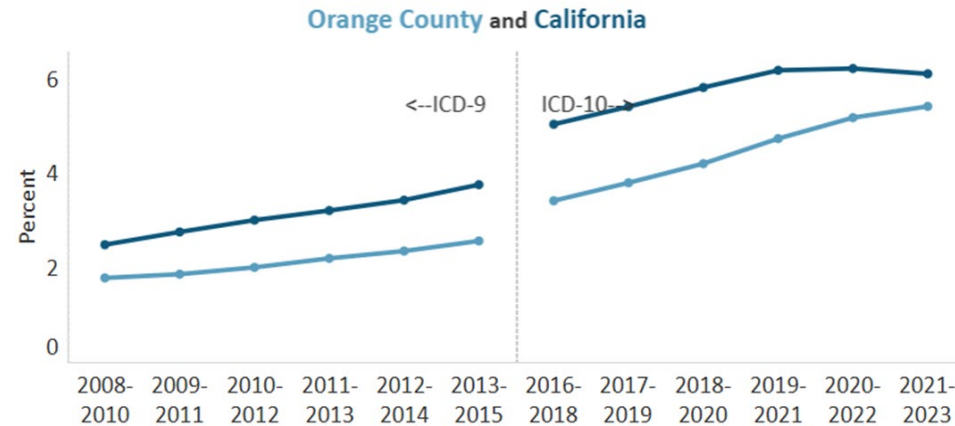
Michele Cheung, MD, MPH, FAAP
 MEDICAL DIRECTOR, MATERNAL, CHILD AND ADOLESCENT HEALTH



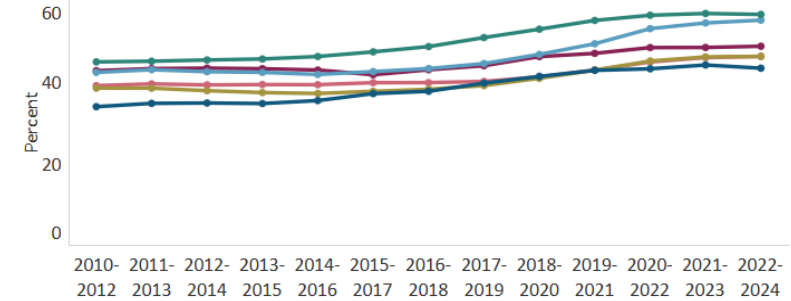
Maternal health conditions that have been **increasing** in Orange County over recent years:

- Being overweight or obese before pregnancy
- Hypertension (high blood pressure)
- Diabetes
- Asthma

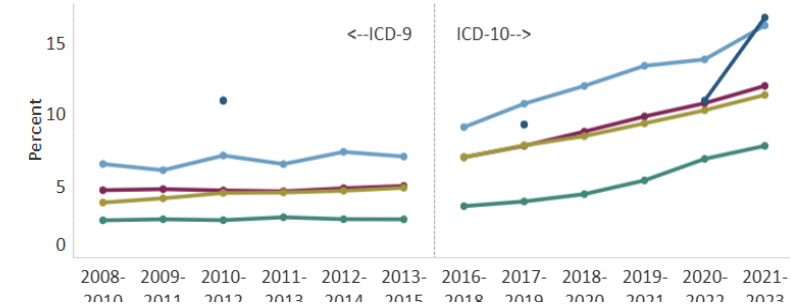
Asthma at Delivery



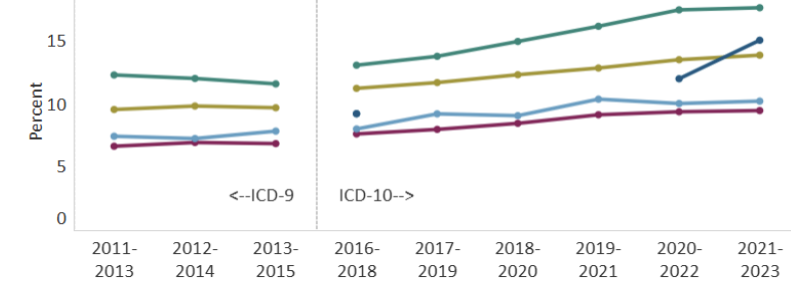
Overweight/Obese by Age, Orange County, 2022-2024



Pregnancy-Associated Hypertension at Delivery by Race/Ethnicity, Orange County, 2021-2023



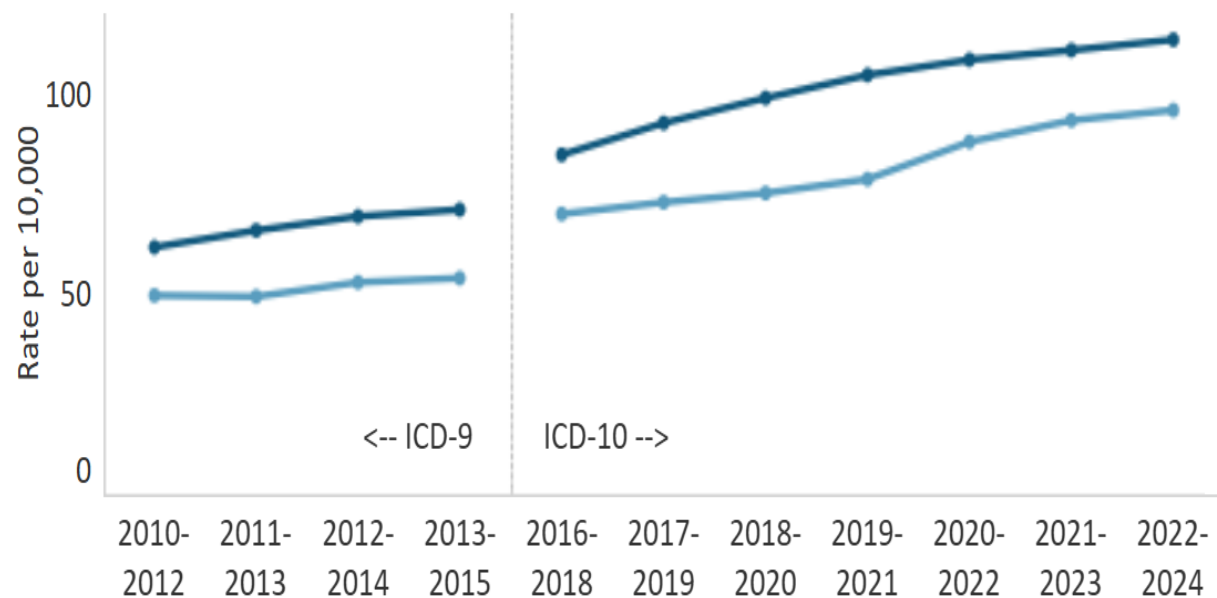
Any Diabetes at Delivery by Race/Ethnicity, Orange County, 2021-2023



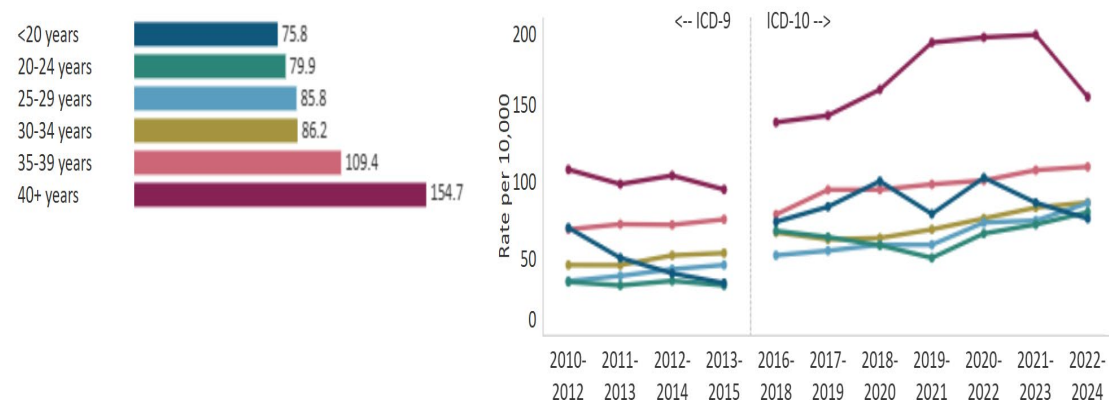
SEVERE MATERNAL MORBIDITY (SMM)

Severe maternal morbidity (SMM) includes unexpected and potentially life-threatening complications from labor and delivery, such as hemorrhage, infection and cardiac events, that result in significant short- or long-term health consequences.

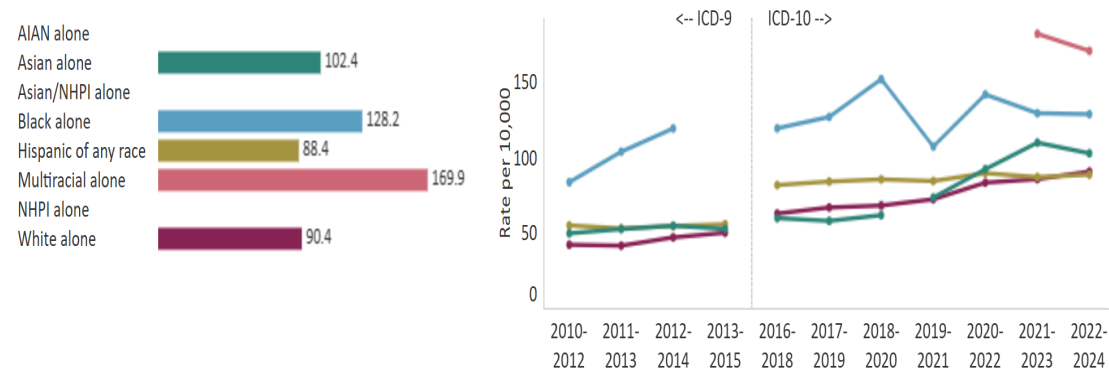
Orange County and California



Severe Maternal Morbidity by Age, Orange County, 2022-2024



Severe Maternal Morbidity by Race Alone and Ethnicity, Orange County, 2022-2024



AIAN- American Indian/Alaskan Native
NHPI- Native Hawaiian/Pacific Islanders

PRENATAL/POSTPARTUM DEPRESSION



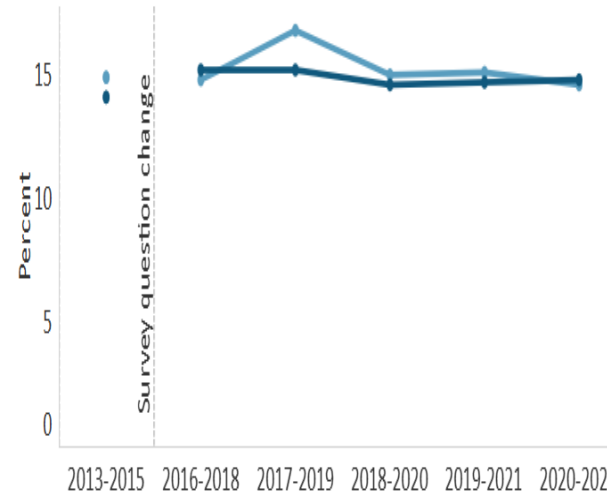
1 in 3 pregnant people experience **anxiety or depression symptoms** during or after pregnancy¹

Between 5% and 14% of pregnant and postpartum people have **thoughts or intentions of self-harm, or suicidal ideation**

Suicide among pregnant or recently pregnant people can **sometimes be prevented when someone intervenes**

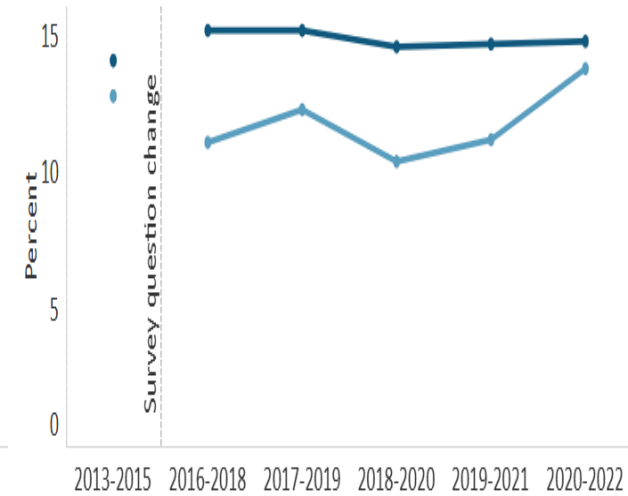
Prenatal Depression Symptoms

Orange County and California



Postpartum Depression Symptoms

Orange County and California




TAKE ACTION TO IMPROVE INFANT AND MATERNAL HEALTH IN OC

- **Address Health Conditions before or early in pregnancy** to improve maternal and infant outcomes
- **Prioritize Maternal Health** to prevent and immediately identify and **address potential life-threatening complications**
- **Support Maternal, Family and Mental Health**
 - Read HCA's upcoming Health Corner article on the topic of postpartum depression
 - Learn more by reading CDPH Supporting Mental Health of California Mothers at [Maternal Mental Health Report](#)
- **Join California Surgeon General's "[One Small Thing](#)"** campaign to support moms
- **Orange County Perinatal Council**



<https://everyparentoc.org/>



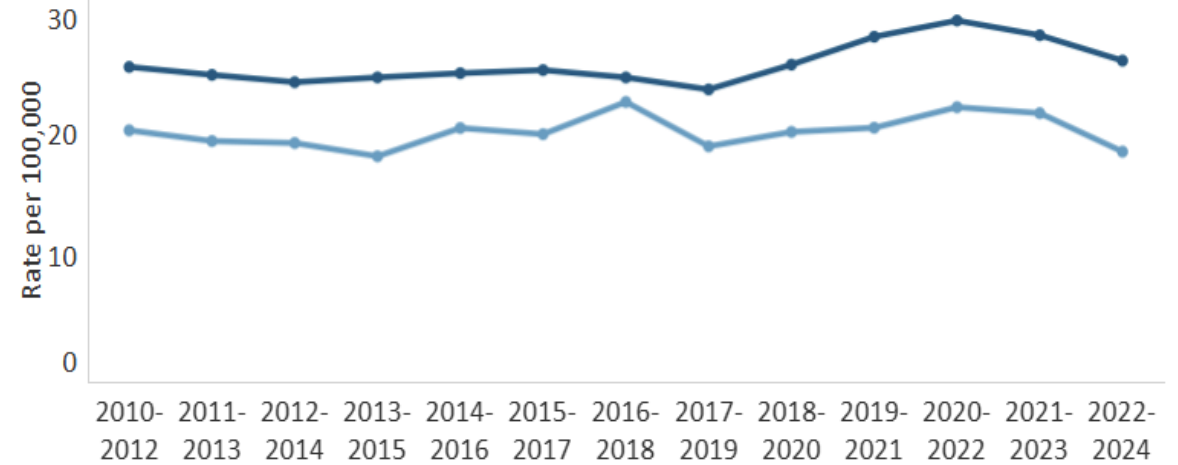
CDPH

National Maternal Mental Health Hotline

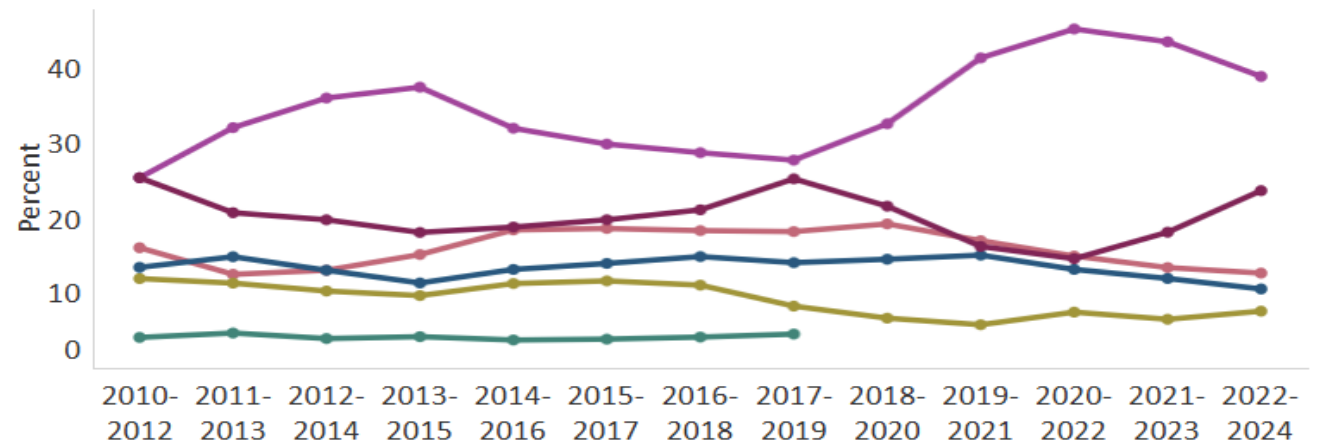
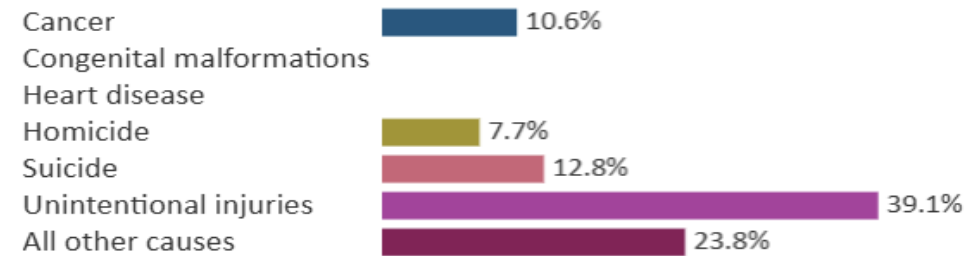
Call or Text
1-833-TLC-MAMA
(1-833-852-6262)

ADOLESCENT MORTALITY

Orange County and California



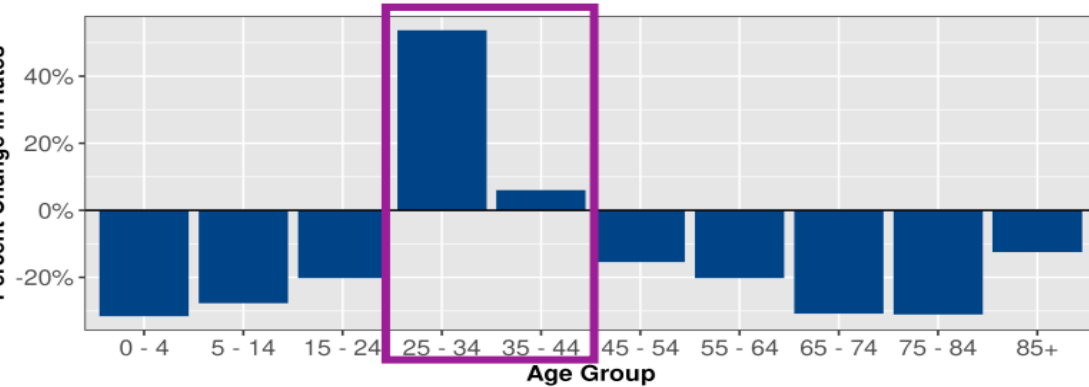
Distribution of Leading Causes of Adolescent Death (Ages 10-19), Orange County, 2022-2024



RISING DEATH RATES AMONG YOUNG ADULTS

State of California

Percent Change in All-Cause Death Rates in California by Age Group, 2000 to 2024



Leading Causes of Death Across the Life Course in Orange, 2024

| | 0 - 4 | 5 - 14 | 15 - 24 | 25 - 34 | 35 - 44 | 45 - 54 | 55 - 64 | 65 - 74 | 75 - 84 | 85+ |
|--------|-------------------------|--------|---------|-----------------|-----------------|--------------------------|----------------------------|------------------------|------------------------|----------------------------|
| Female | | | | | | | | | | |
| 1 | Pregnancy complications | * | Suicide | Drug overdose | Drug overdose | Drug overdose | Breast cancer | Ischemic heart disease | Alzheimer's disease | Alzheimer's disease |
| 2 | Congenital anomalies | * | * | Suicide | Breast cancer | Breast cancer | Ischemic heart disease | Lung cancer | Ischemic heart disease | Ischemic heart disease |
| 3 | * | * | * | Road injury | Alcohol-related | Ischemic heart disease | Other cancers | Stroke | Stroke | Stroke |
| 4 | * | * | * | Alcohol-related | * | Colon and rectum cancers | Alcohol-related | Alzheimer's disease | Lung cancer | Congestive heart failure |
| 5 | * | * | * | * | * | Stroke | Lung cancer | Breast cancer | COPD | Hypertensive heart disease |
| Male | | | | | | | | | | |
| 1 | Congenital anomalies | * | Suicide | Drug overdose | Drug overdose | Drug overdose | Ischemic heart disease | Ischemic heart disease | Ischemic heart disease | Alzheimer's disease |
| 2 | Pregnancy complications | * | * | Suicide | Alcohol-related | Ischemic heart disease | Drug overdose | Lung cancer | Alzheimer's disease | Ischemic heart disease |
| 3 | * | * | * | Road injury | * | Alcohol-related | Alcohol-related | Stroke | Stroke | Congestive heart failure |
| 4 | * | * | * | Alcohol-related | * | Suicide | Hypertensive heart disease | Alzheimer's disease | Lung cancer | Stroke |
| 5 | * | * | * | * | * | Colon and rectum cancers | Stroke | Pancreas cancer | COPD | Hypertensive heart disease |

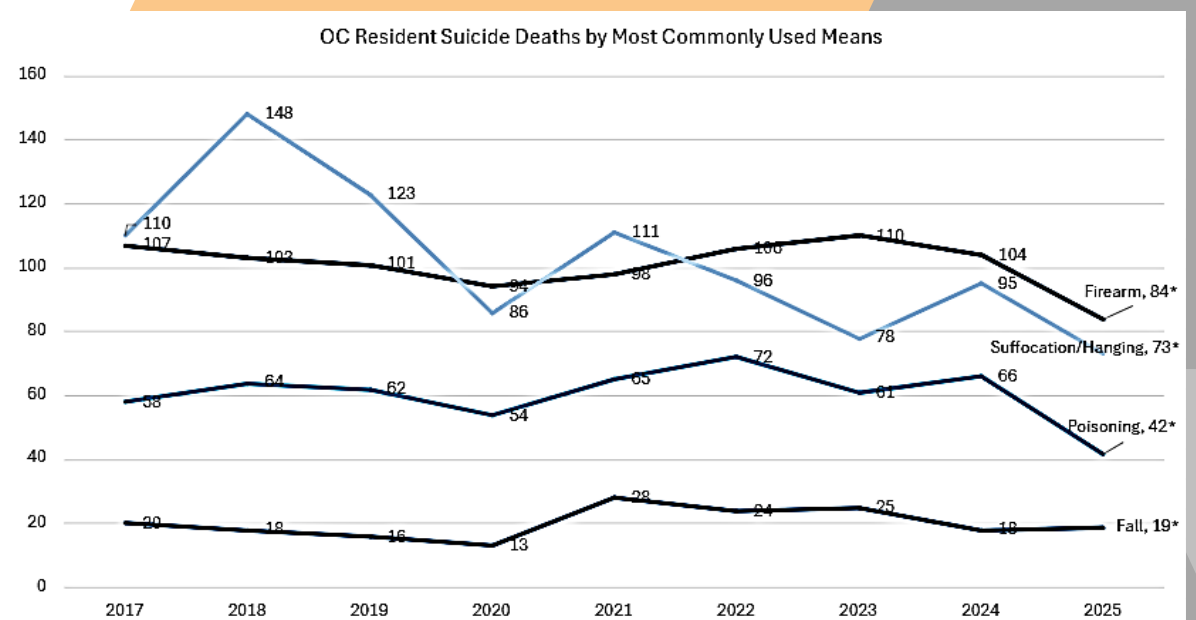
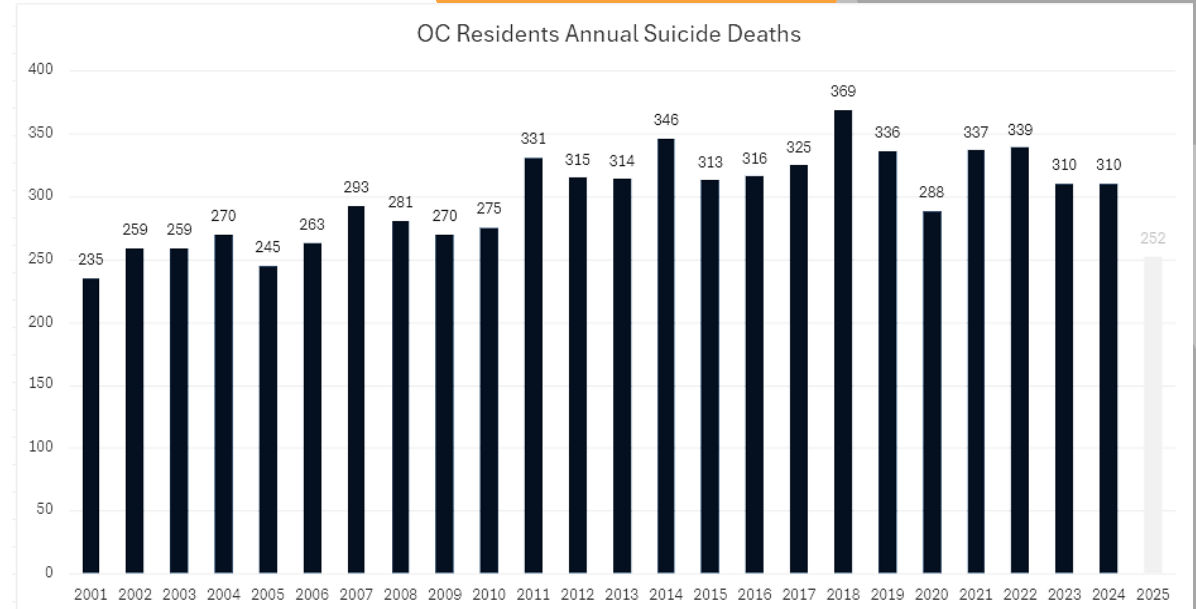
*Data suppressed due to small numbers

Legend: Cardiovascular (Orange), Cancer (Grey), Other Chronic (Green), Injury (Blue), Perinatal (Yellow)

SOURCE: CALIFORNIA DEPARTMENT OF PUBLIC HEALTH, CALIFORNIA STATE OF PUBLIC HEALTH REPORT 2026, [HTTPS://WWW.CDPH.CA.GOV/PROGRAMS/OPP/PAGES/STATE-OF-PUBLIC-HEALTH-REPORT.ASPX](https://www.cdph.ca.gov/Programs/OPP/Pages/State-of-Public-Health-Report.aspx) AND CALIFORNIA COMMUNITY BURDEN OF DISEASE ENGINE (CCB) LAST MODIFIED JANUARY 2026 AND AND CALIFORNIA COMMUNITY BURDEN OF DISEASE ENGINE (CCB) - LEADING CAUSES OF DEATH ACROSS LIFE COURSE. [HTTPS://SKYLAB.CDPH.CA.GOV/COMMUNITYBURDEN/](https://skylab.cdph.ca.gov/communityburden/)

MENTAL HEALTH - SUICIDES

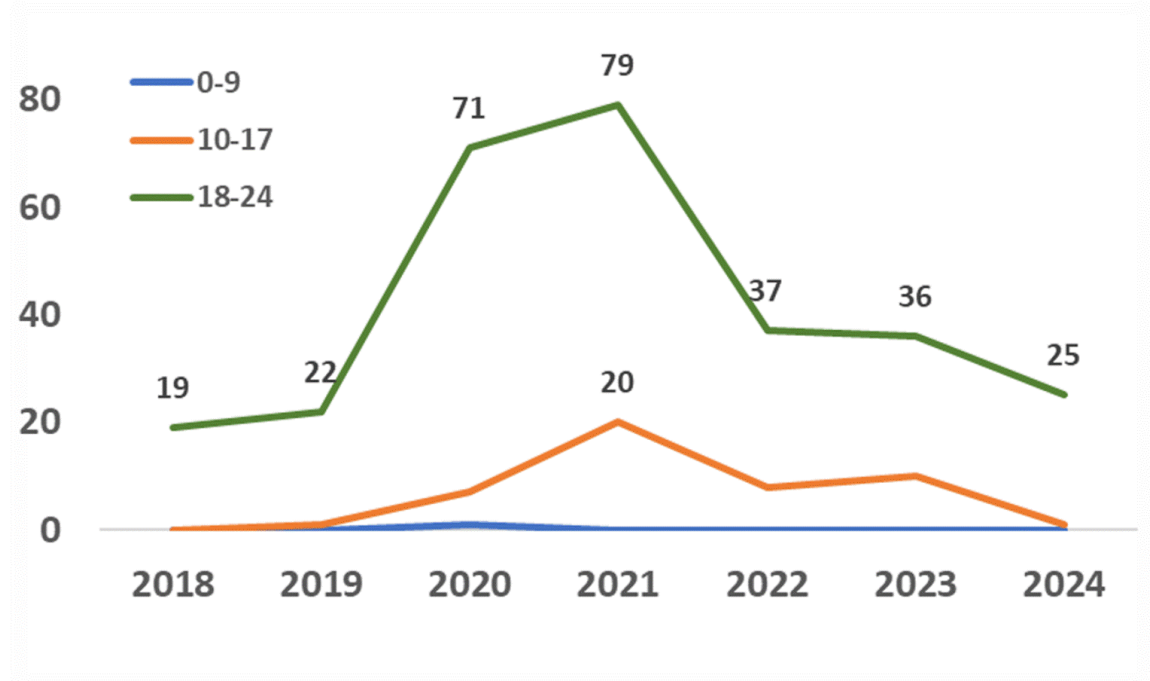
- The rates of suicide in Orange County have decreased since 2016
- Rates of suicide peaked in 2018
- Suicide deaths in 2023 and 2024 were at the lowest levels since 2010 (excluding 2020).
- 2025 count is preliminary and will likely be higher than shown but is on track to also be at the lower levels compared to previous years.



MENTAL HEALTH – SUBSTANCES - FENTANYL OVERDOSE DEATHS

Orange County Fentanyl-Related Overdose Deaths

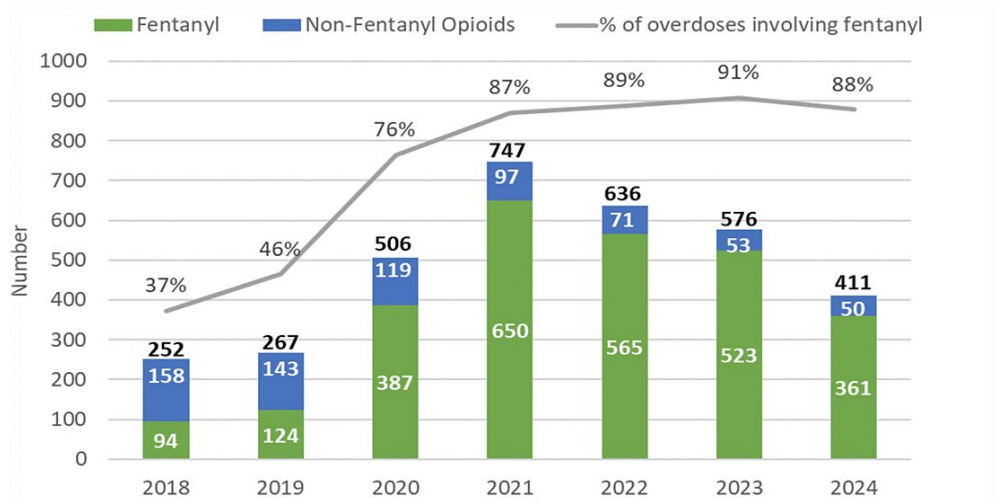
Youth & Young Adults 2018–2024



Source: California Comprehensive Death File, California Department of Public Health

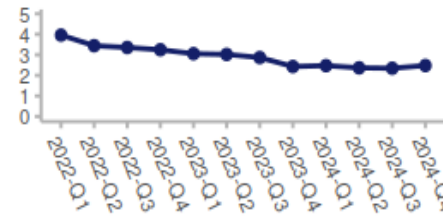
MENTAL HEALTH - SUBSTANCES

Orange County Opioid Overdose Death Count Trends

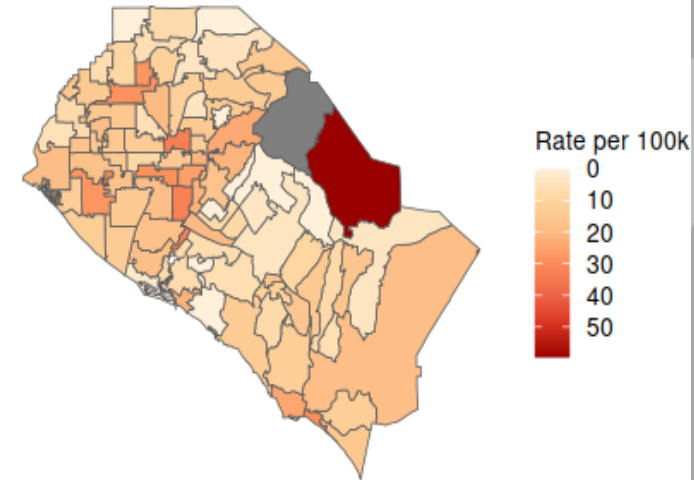


Source: California Comprehensive Death File, California Department of Public Health

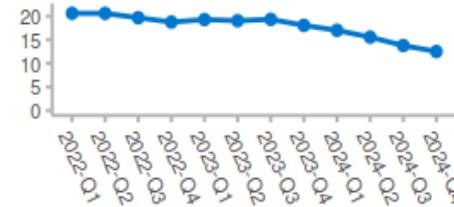
12-Month Rx Opioid-Related OD w/o Synthetics Death Rates



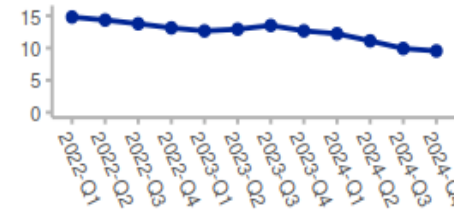
Any Opioid-Related Overdose, 2024 Age-Adjusted Annual Death Rates by Zip Code



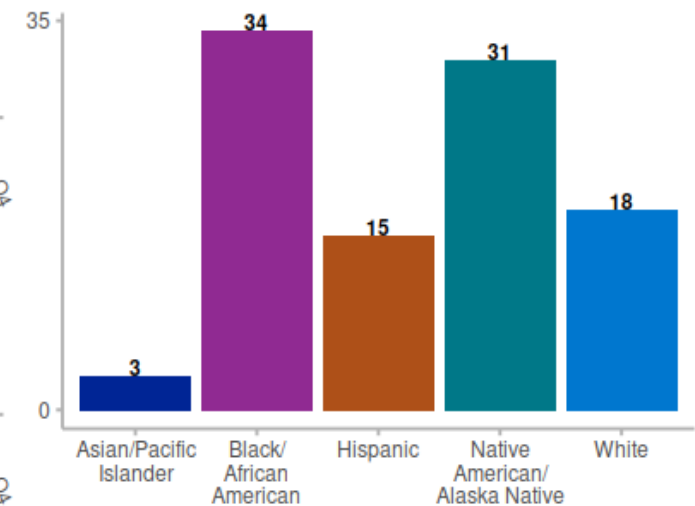
12-Month Synthetic Opioid-Related OD Death Rates



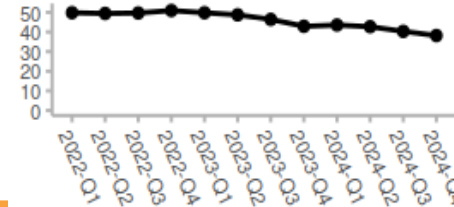
12-Month Psychostimulant w/Abuse Potential-Related OD Death Rates



Any Opioid-Related Overdose, 2024 Age-Adjusted Death Rates per 100k Residents by Race/Ethnicity



12-month Any Opioid-Related OD ED Visit Rates



12-month rates are based on moving averages; OD = Overdose
 Produced by the California Overdose Surveillance Dashboard: <https://skylab.cdph.ca.gov/ODdash>

OC IS TAKING ACTION AGAINST SUBSTANCE USE

- Fentanyl is Forever Awareness Campaign and Opioid Reversal Training (<https://www.fentanylisforeveroc.org/get-naloxone#get-naloxone>)
- The Orange County Board of Supervisors as well as several cities passed ordinances reducing access to Nitrous Oxide and Kratom.

Taking Action

Everyone has a role in preventing substance-related harms.

Community members can:

- Stay informed about local risks and emerging substances
- Learn how to recognize and respond to an overdose
- Carry naloxone if appropriate
- Share factual information with friends, family, and youth
- Encourage loved ones to seek help—and know where to find services
- Support policies and programs that promote prevention and treatment

Learn about:

- Treatment, Services and Support are available for substance use. Learn more at <https://ohealthinfo.com/health-corner/treatment-services-and-support-are-available>.
- Read about Nitrous Oxide in Orange County at <https://ohealthinfo.com/health-corner/special-report-nitrous-oxide-orange-county>




Attention Licensees Kratom is Illegal

Selling kratom or 7-OH products in an ABC-licensed establishment is illegal. Business owners should cease all sales of these products immediately.

These harmful products have been linked to fatal overdoses. ABC is working to educate licensees about this recent guidance.

ABC appreciates your prompt attention to ensure full compliance and to help protect public safety.

CALIFORNIA DEPARTMENT OF
Alcoholic Beverage Control abc.ca.gov




NITROUS OXIDE

Assessment of Misuse and Policy Recommendations

OC HEALTH CARE AGENCY
SPECIAL REPORT

405 W 5th Street
Santa Ana, CA 92701



CANCER AND CHRONIC CONDITIONS

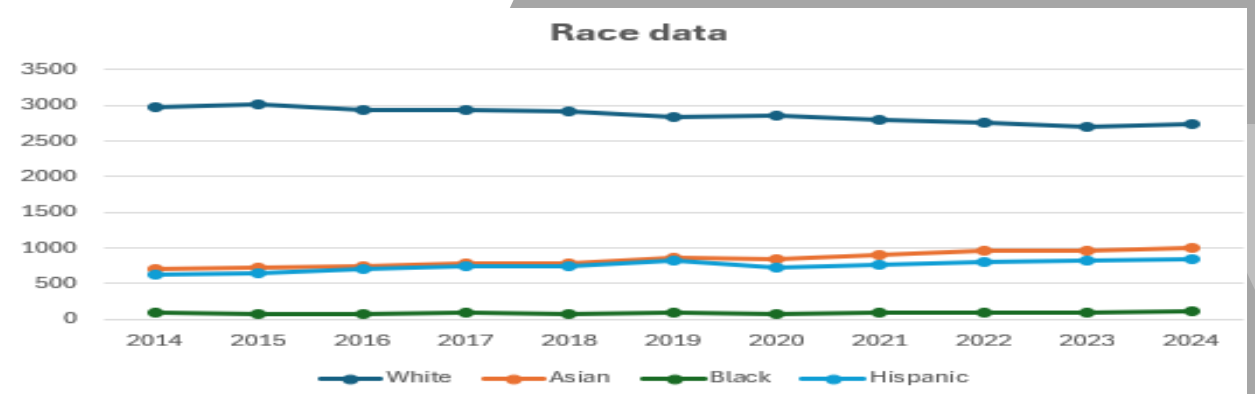
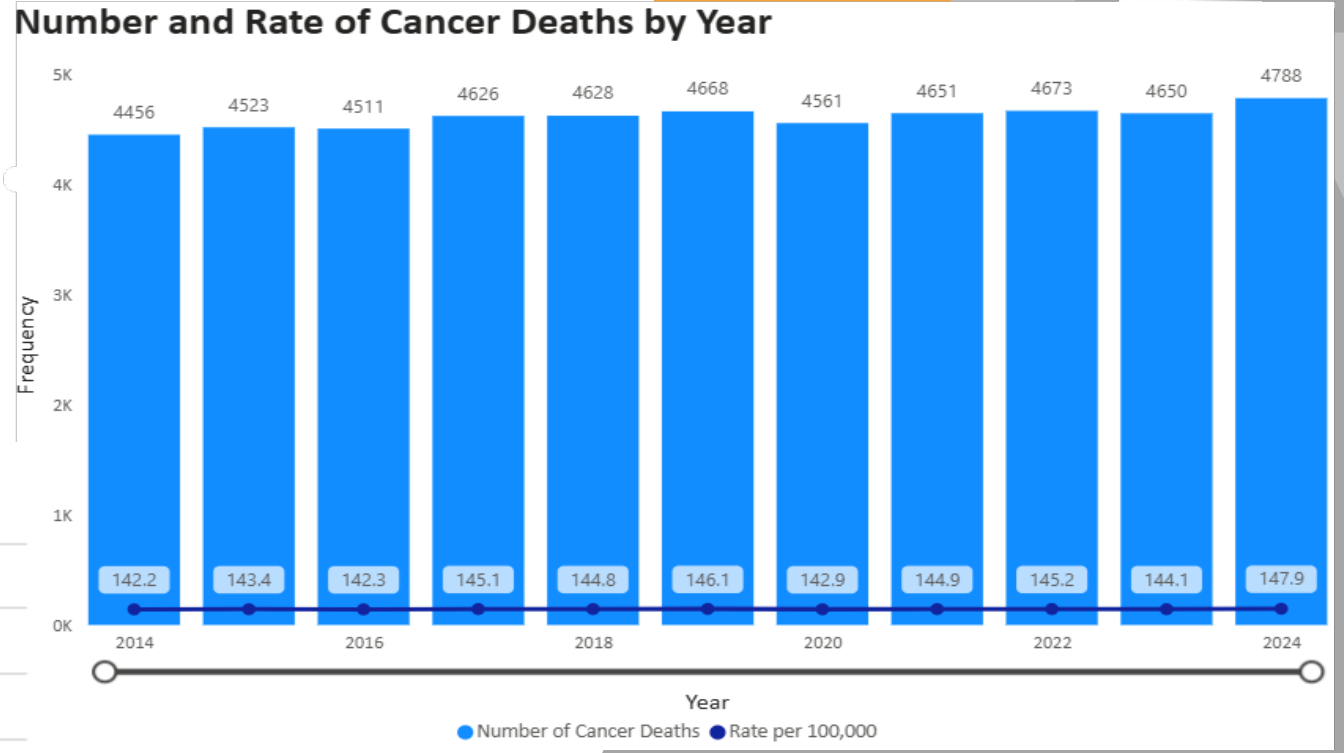
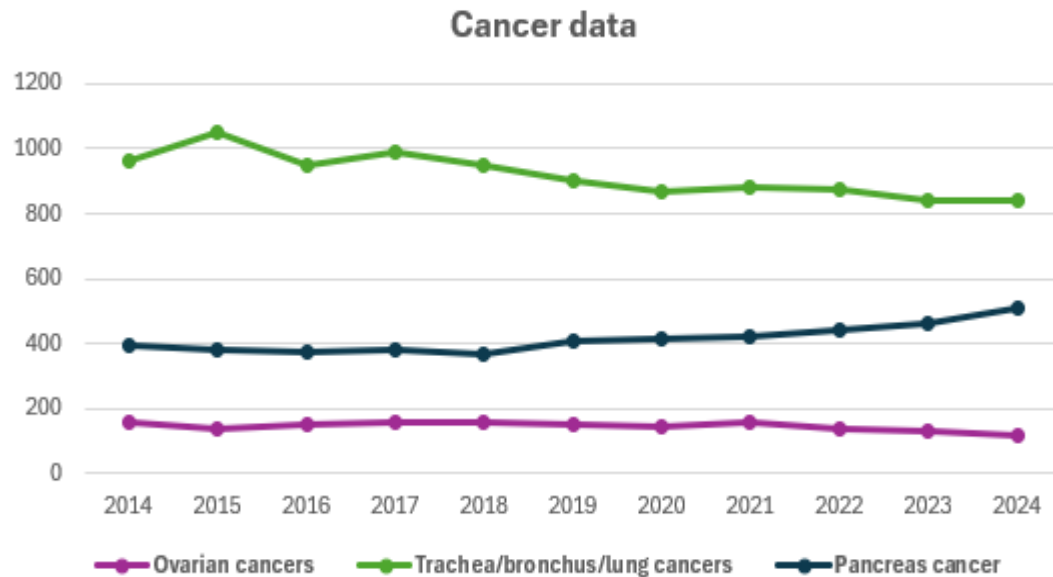
- Cancer
- Obesity/Diabetes
- Heart Disease
- Stroke



[This Photo](#) by Unknown Author is licensed under [CC BY-SA](#)

CANCER DEATH RATES

- **Increasing** overall
- **Increasing** in Asian, Black and Hispanic
- **Declining** for Trachea/Bronchus/Lung and Ovarian Cancer
- **Increasing** for Pancreatic Cancer



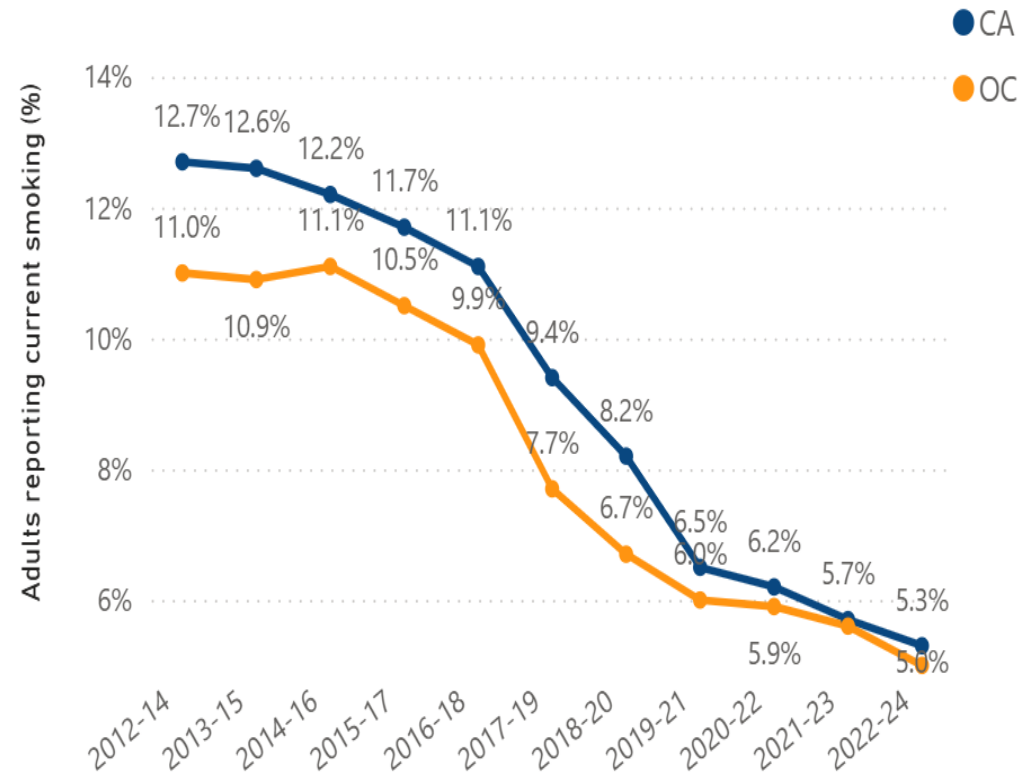
REDUCING LUNG CONDITIONS THROUGH TOBACCO PREVENTION



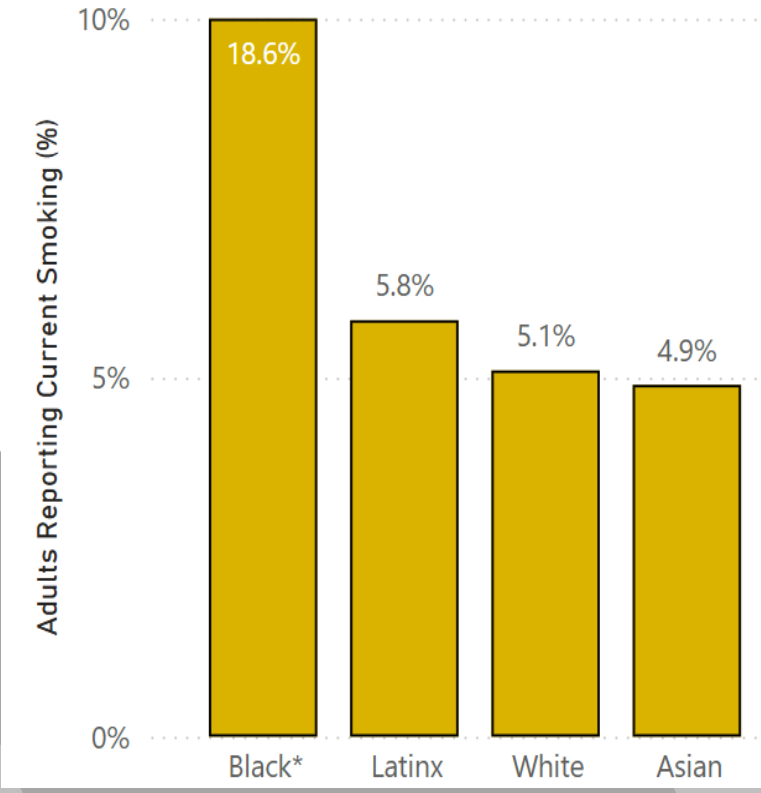
Adult smoking rates

- **Steadily declining** in OC over the past decade
- 2022-2024: **5.0%** of adults in OC reported current smoking
- Black adults reported the highest percent of current smoking among race/ethnicity groups (**18.6%**)

Adult Current Smoking
(CHIS)



Adult Smoking by Race/Ethnicity
(CHIS - 2020-24)





TOP CANCER CARE CENTERS AVAILABLE IN ORANGE COUNTY

- Multiple hospital systems
 - City of Hope, Hoag, MemorialCare, Providence, UCI Health*
 - UCI Chao Family Comprehensive Cancer Center (CFCCC)
 - NCI-designated Comprehensive Cancer Center*
 - [UCI Catchment Area Dashboard](#)- publicly accessible tool providing cancer incidence and mortality data for Orange County
- More opportunities locally
 - Wide range of local experts
 - Access to advanced treatments
 - Clinical trials
 - Research
 - Data

** NCI designation recognizes excellence in cancer research, clinical care, and community programs—representing the highest level awarded by the National Cancer Institute.*

Cancer Control Priorities in Orange County

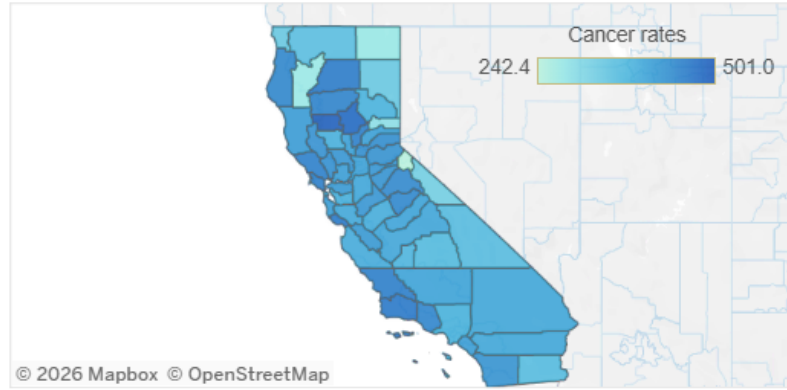
- Cancer Overview
- Cancer Incidence**
- Cancer Mortality
- Catchment Comparison
- Detailed Comparison
- Cancer Survival
- OC & CDC Profile

UCIrvine 趙Chao Family
Comprehensive Cancer Center
Catchment Area Dashboard

Cancer Incidence Rates in California and Orange County (2018 - 2022)

A cancer incidence rate is the number of new cancers of a specific site/type occurring in a specified population during a year. Cancer incidence is expressed as the number of cancers per 100,000 population at risk. (<https://seer.cancer.gov/statistics/types/incidence.html>)

California
All Sites



Incidence Rates by Region
All Sites

| | Rate | Count | Count per Year |
|---------------|-------|-----------|----------------|
| Orange County | 414.3 | 77,504 | 15,501 |
| California | 405.6 | 910,305 | 182,061 |
| United States | 442.6 | 2,266,903 | 453,381 |

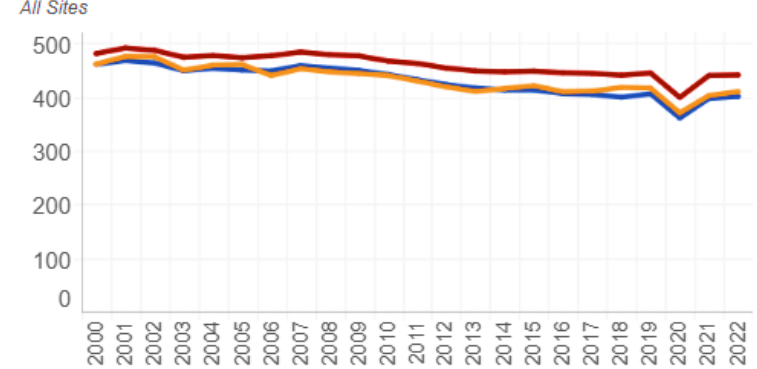
Filters

- Sex
- Male and female
 - Female
 - Male
- Race/Ethnicity
- All Races
 - American Indian/Alaska ...
 - Asian or Pacific Islander
 - Black (Non-Hispanic)
 - Hispanic
 - White (Non-Hispanic)

Incidence Rates by County
All Sites

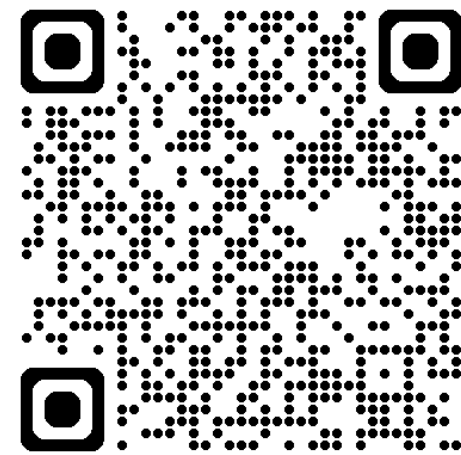
| County | Rate | Count | Count per Year |
|---------------------|-------|--------|----------------|
| Yolo County | 429.1 | 4,602 | 920 |
| Amador County | 425.4 | 1,553 | 311 |
| Stanislaus County | 425.1 | 12,201 | 2,440 |
| San Benito County | 421.1 | 1,428 | 286 |
| Contra Costa County | 420.5 | 29,955 | 5,991 |
| Mendocino County | 415.9 | 2,867 | 573 |
| San Mateo County | 414.6 | 19,522 | 3,904 |
| Orange County | 414.3 | 77,504 | 15,501 |

Incidence Rates (2000 - 2022)
All Sites



- Cancer Site
- All Sites
 - Anus, Anal Canal and ...
 - Brain and Other Nerv...
 - Breast
 - Cervix Uteri
 - Colon and Rectum
 - Corpus and Uterus, N...
 - Esophagus
 - Gallbladder
 - Kidney and Renal Pel...
 - Leukemia
 - Liver and Intrahepatic...
- County, State, and Country
- Orange County
 - California
 - United States

Data source: Surveillance, Epidemiology, and End Results (SEER) Program (www.seer.cancer.gov) SEER*Stat Database: Incidence - SEER Research Plus Data, 17 Registries, Nov 2024 Sub (2000-2022), National Cancer Institute, DCCPS, Surveillance Research Program, released 2025, based on the November 2024 submission.
Data precaution: when analyzing rates with low case volume (<25), suppression is used to avoid misinterpretation when rates are unstable.
(<https://state.cancerprofiles.cancer.gov/suppressed.html>)



<https://cancer.uci.edu/about/catchment-area>

Overview of Orange County Cancer Burden

| Age Adjusted Cancer Incidence and Mortality per 100,000 by Race/Ethnicity in OC, CA, and US | | | | | | | | | | | | | | |
|---|---------------------|-------|-------|-------|-------|-------|-------|---------------------|-------|-------|-------|-------|-------|-------|
| | Incidence (2018-22) | | | | | | | Mortality (2019-23) | | | | | | |
| | OC | | | | | CA | US | OC | | | | | CA | US |
| | API | H | B | WH | All | All | All | API | H | B | WH | All | All | All |
| Bladder [^] | 8.7 | 9.2 | 13.6 | 19.1 | 15.3 | 15.6 | 17.9 | 2.4 | 2.4 | NA | 4.7 | 3.8 | 3.7 | 4.1 |
| Brain [®] | 3.9 | 5.6 | 5.7 | 7.5 | 6.2 | 5.8 | 6.1 | 3.2 | 3.8 | 4.2 | 5.8 | 4.8 | 4.5 | 4.4 |
| Breast ^{^®} (F) | 106.9 | 107.1 | 118.3 | 152.6 | 132.3 | 125.6 | 131.1 | 12.2 | 15.5 | 26.6 | 21.1 | 18.0 | 18.7 | 19.2 |
| Cervix (F) | 5.6 | 8.7 | 6.6 | 5.8 | 6.7 | 7.3 | 7.4 | 2.0 | 2.4 | NA | 1.3 | 1.7 | 2.1 | 2.2 |
| Colorectal ^{^®} | 27.2 | 30.5 | 43.0 | 32.8 | 32.0 | 34.2 | 36.8 | 9.5 | 9.8 | 11.4 | 11.0 | 10.5 | 12.0 | 12.9 |
| Endometrial (F) | 19.6 | 24.8 | 21.3 | 27.7 | 25.9 | 28.1 | 28.0 | 4.0 | 3.9 | 8.3 | 5.2 | 4.8 | 5.5 | 5.3 |
| Kidney [^] | 7.4 | 17.2 | 13.7 | 14.3 | 13.4 | 15.0 | 16.7 | 1.8 | 3.4 | NA | 2.8 | 2.6 | 3.1 | 3.4 |
| Leukemia [®] | 8.5 | 12.0 | 15.3 | 14.8 | 13.2 | 12.7 | 14.1 | 3.3 | 4.2 | 5.3 | 6.5 | 5.5 | 5.4 | 5.8 |
| Liver [®] | 13.4 | 12.7 | 11.3 | 5.7 | 9.0 | 9.6 | 9.1 | 10.0 | 9.4 | 6.1 | 5.0 | 7.0 | 7.5 | 6.6 |
| Lung ^{^®} | 32.8 | 23.0 | 49.0 | 39.6 | 35.3 | 36.3 | 46.1 | 20.5 | 13.4 | 22.3 | 23.5 | 21.0 | 22.6 | 31.5 |
| Melanoma [^] | 1.2 | 6.9 | 1.0 | 48.3 | 30.5 | 23.4 | 24.3 | 0.3 | 0.7 | NA | 3.0 | 1.8 | 1.8 | 2.0 |
| Non-Hodgkins Lymphoma ^{^®} | 14.1 | 19.3 | 20.2 | 20.4 | 19.1 | 18.1 | 18.7 | 3.9 | 4.3 | 6.1 | 4.8 | 4.6 | 4.8 | 4.9 |
| Ovary (F) | 9.5 | 11.5 | 8.0 | 10.8 | 10.9 | 10.6 | 10.1 | 5.1 | 5.3 | NA | 7.3 | 6.3 | 6.2 | 5.9 |
| Pancreas [®] | 11.1 | 12.6 | 18.5 | 13.5 | 12.9 | 12.7 | 13.5 | 8.7 | 9.8 | 13.3 | 10.8 | 10.3 | 10.5 | 11.3 |
| Prostate ^{^®} (M) | 59.1 | 87.4 | 166.5 | 113.9 | 106.2 | 102.6 | 119.1 | 11.0 | 16.6 | 51.3 | 21.7 | 18.7 | 20.3 | 19.2 |
| Stomach [®] | 9.2 | 9.9 | 11.0 | 5.3 | 7.4 | 7.6 | 7.2 | 4.3 | 5.2 | 4.9 | 2.4 | 3.5 | 3.7 | 2.7 |
| Thyroid [^] | 13.3 | 13.2 | 5.9 | 14.6 | 13.8 | 12.5 | 13.3 | 0.5 | 0.9 | NA | 0.5 | 0.6 | 0.6 | 0.5 |
| All Cancers | 295.7 | 350.7 | 444.3 | 465.3 | 414.3 | 405.6 | 442.6 | 101.2 | 108.5 | 142.1 | 136.3 | 124.1 | 131.9 | 145.4 |

Asian Pacific Islander (API), Hispanic (H), Black (B), White (WH), All Race/Ethnicity groups combined (All), Female only (F), Male only (M), Not Available (N/A); **Bold=Top 10 OC Cancer Incidence** or **®Mortality**; Blue Shading=higher compared to same group in CA at >5% difference; Source: Surveillance, Epidemiology, and End Results Program (SEER); SEER does not disaggregate Asians from Pacific Islanders at the case level

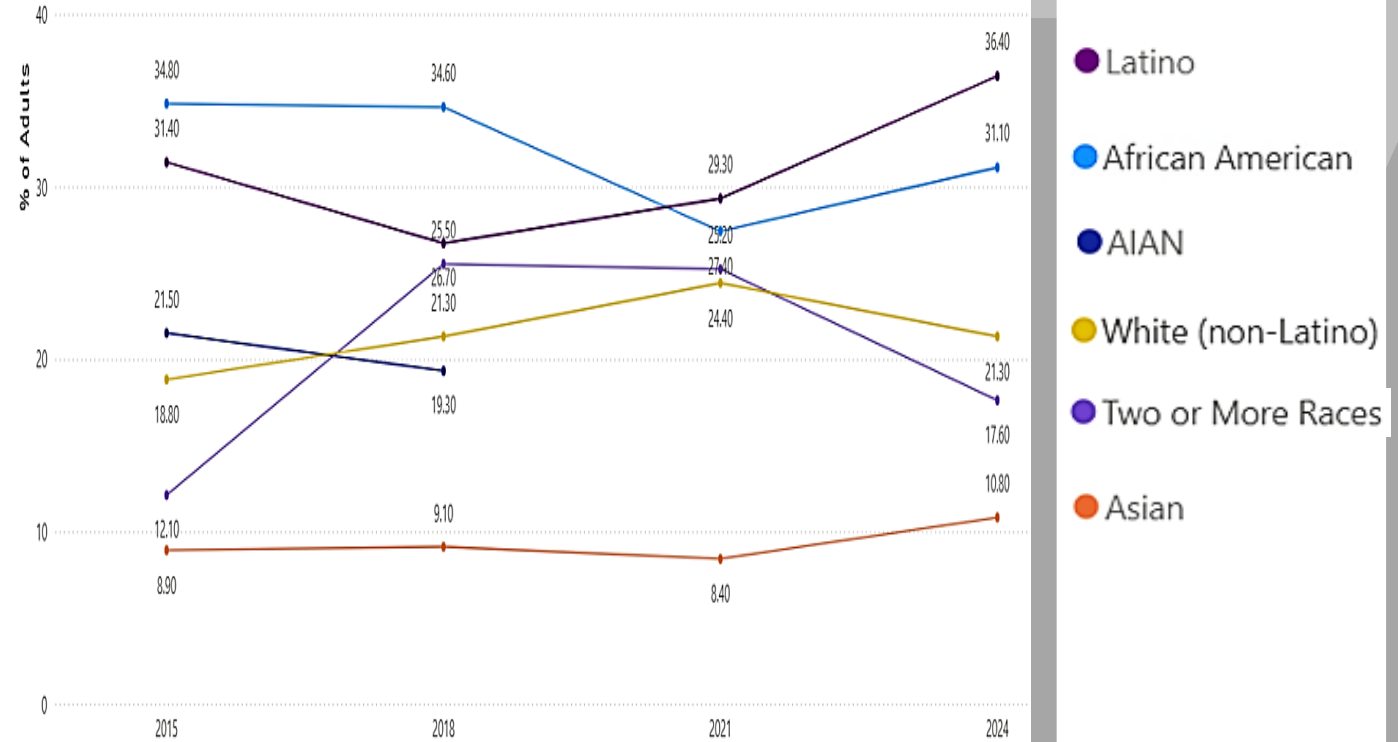
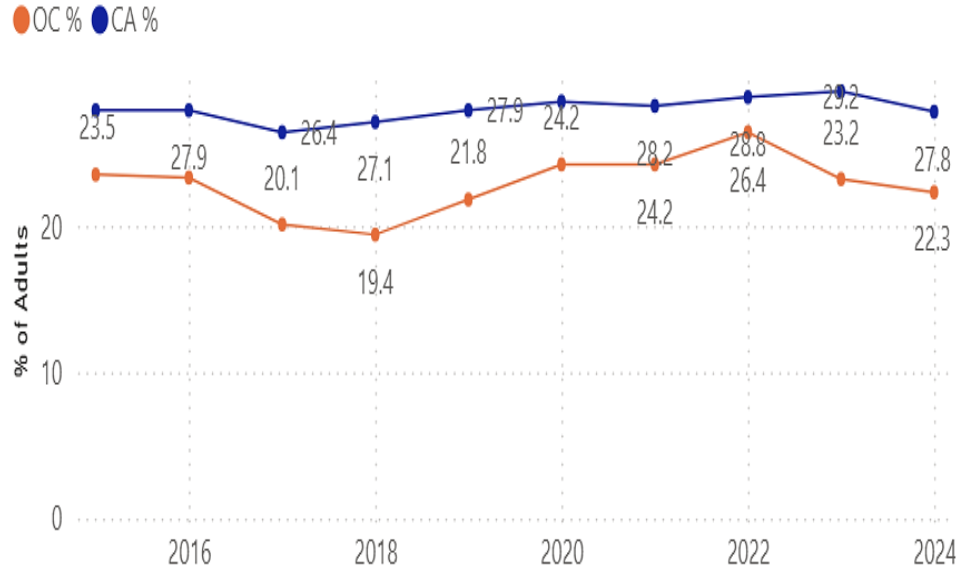
TAKE ACTION - WHAT INDIVIDUALS AND COMMUNITIES CAN DO TO FIGHT CANCER

- **Take Charge of Your Health**
 - Regular clinical check-ups matter — early detection saves lives.
 - Learn what you can do to reduce your cancer risk, including lifestyle-related prevention strategies.
 - Talk to your healthcare provider about screening schedules, early detection recommendations, treatment, and available clinical trials in Orange County.
- **Get involved in the Community**
 - Learn more and bring more awareness to yourself, your family and your community.
 - Support friends and loved ones who are fighting cancer.
 - Get involved - help raise awareness, support organizations that provide cancer resources or help support research.
- **Where to get more information about Cancer Incidence:**
 - California Cancer Registry (<https://www.ccrca.org/learn-about-ccr/>)
 - UCI Chao Family Comprehensive Cancer Center Catchment Area Webpage - <https://cancer.uci.edu/about/catchment-area>



CARDIO-METABOLIC CONDITION- OBESITY

Proportion of adults with bmi >= 30 based on self-reported height and weight



California Health Interview Survey (CHIS). (Year). *California Health Interview Survey: Public Use Files*. UCLA Center for Health Policy Research. <https://healthpolicy.ucla.edu/our-work/california-health-interview-survey-chis/access-chis-data/chis-frequently-asked-questions-faqs>



CARDIO-METABOLIC CONDITION- DIABETES

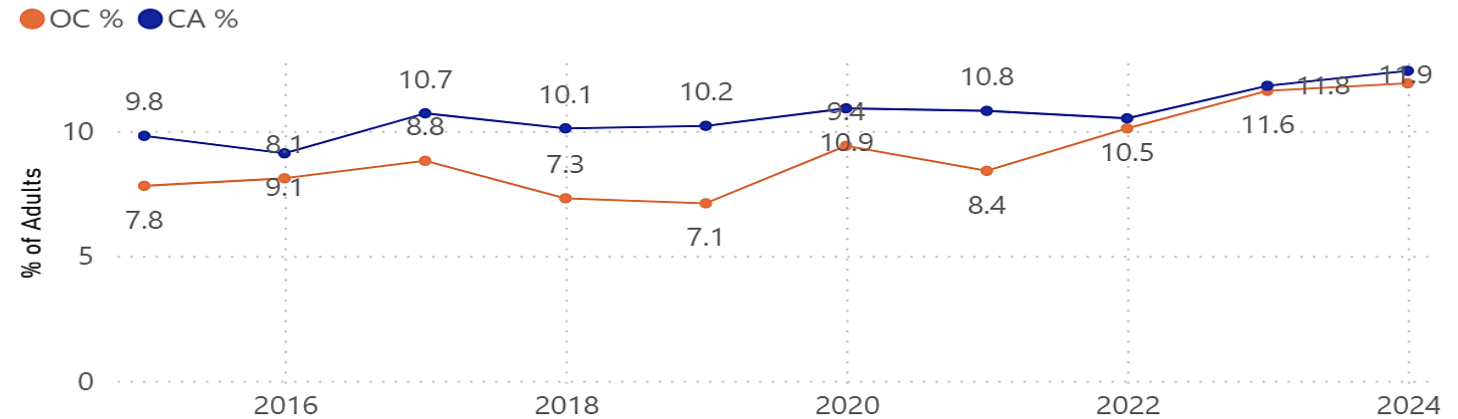
The percent of adults with self-reported diabetes diagnoses in OC has been steadily increasing since 2021

- 2024- 11.9% of adults

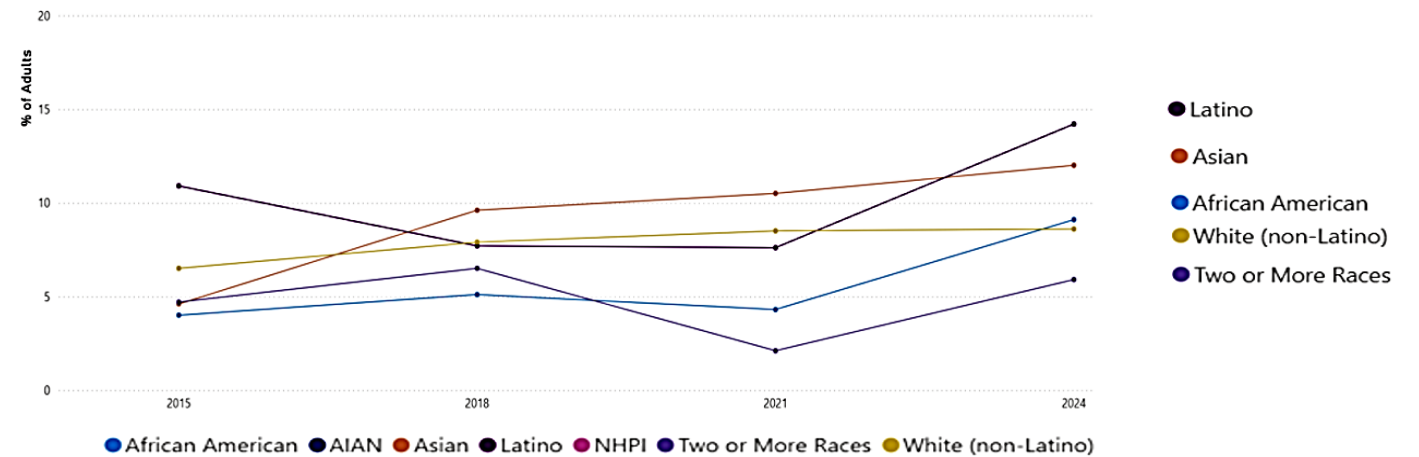
Seniors (65+) report higher rates of diabetes

- 2024- 22.8% of seniors

Proportion of adults with self-reported diabetes diagnosis by healthcare provider



Percentage of adults reporting diabetes diagnoses across race/ethnicity groups except White



California Health Interview Survey (CHIS). (Year). *California Health Interview Survey: Public Use Files*. UCLA Center for Health Policy Research. <https://healthpolicy.ucla.edu/our-work/california-health-interview-survey-chis/access-chis-data/chis-frequently-asked-questions-faqs>

TAKE ACTION - MAINTAINING HEART, BRAIN, VESSEL HEALTH

- **Take Charge of Your Health**

- Learn what you can do to maintain a healthy weight, healthy blood vessels, and protect your heart and brain.
- Maintain a healthy diet and lifestyle.
- Maintain regular check ups with a health care professional to manage your health (maintain a healthy blood pressure, blood sugar, stay active)

- **Know when to seek immediate medical attention**

- **Excellent Care is Available in Orange County!**

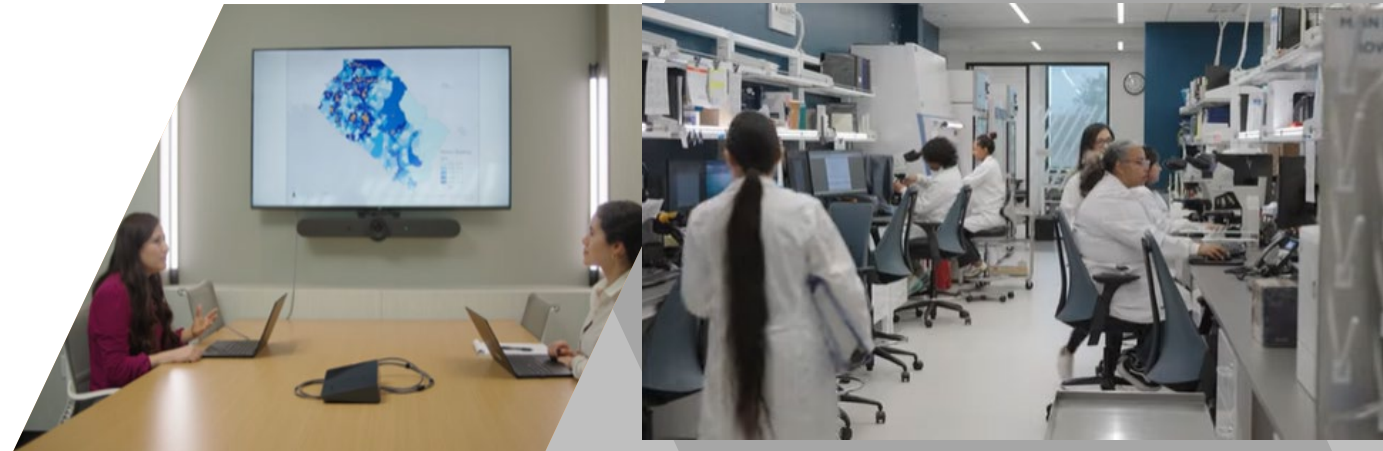
- Orange County has 13 Cardiovascular Receiving Centers and 8 Stroke Receiving Centers
- 2025- American Heart Association recognized 17 Orange County Hospitals



[HTTPS://NEWSROOM.HEART.ORG/LOCAL-NEWS/45-HOSPITALS-IN-ORANGE-COUNTY-INLAND-EMPIRE-AND-THE-COACHELLA-VALLEY-RECOGNIZED-FOR-EFFORTS-TO-IMPROVE-OUTCOMES-FOR-AMERICANS-WITH-HEART-DISEASE-AND-STROKE](https://newsroom.heart.org/local-news/45-hospitals-in-orange-county-inland-empire-and-the-coachella-valley-recognized-for-efforts-to-improve-outcomes-for-americans-with-heart-disease-and-stroke)

COMMUNICABLE DISEASES

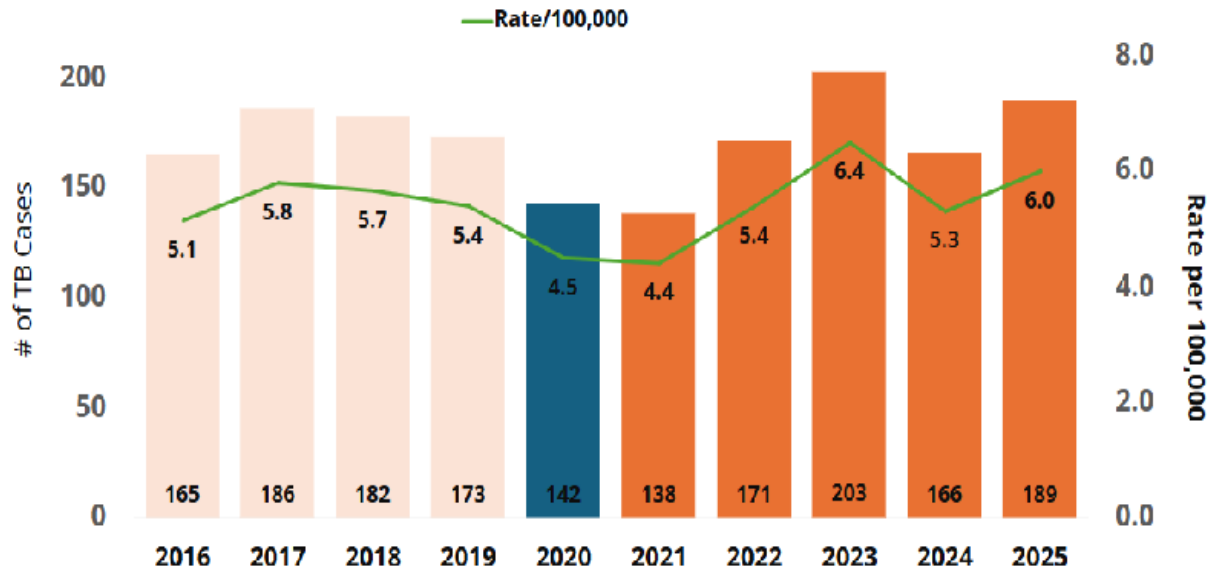
- Tuberculosis
- HIV and Sexually Transmitted Infections
- Hepatitis
- Respiratory Viruses
- Measles



Learn more at: <https://ohealthinfo.com/about-hca/public-health-services> and <https://www.ohealthinfo.com/services-programs/disease-prevention/communicable-disease-control-division>

Tuberculosis

Tuberculosis Cases and Incidence Rates, Orange County, 2016 - 2025



| Year | # of TB Cases | Rate per 100,000 |
|---------------|---------------|------------------|
| 2025 | 189 | 6.0 |
| Orange County | 189 | 6.0 |
| California | 2,150 | 5.4 |

TUBERCULOSIS IS CURABLE

Helene M. Calvet, MD

MEDICAL DIRECTOR & TB CONTROLLER
PULMONARY DISEASE SERVICES



Orange County (OC) consistently ranks third in TB cases statewide, behind Los Angeles and San Diego counties.

Case numbers have barely declined over the past decade. In 2025, 189 active TB cases were reported in OC, a 14% increase from the previous year's 166 cases.

The good news: TB is curable, and with proper treatment, people can recover fully.

Treating LTBI can decrease the risk of developing TB disease by up to 90%. That is why it is critical for providers to offer treatment and for patients to accept it.

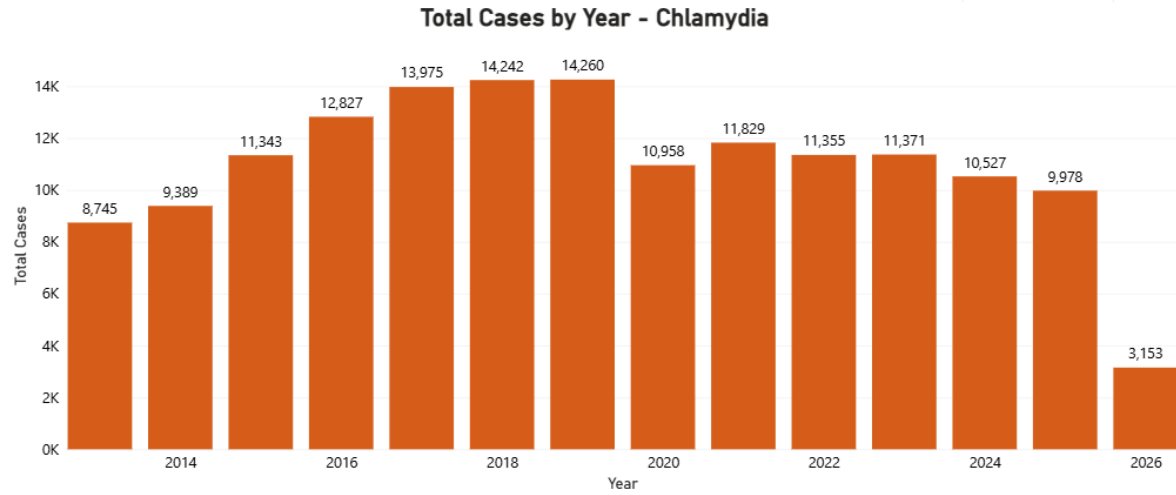
People with TB disease typically have symptoms, an abnormal CXR, and may be contagious to others. Common symptoms of TB disease in the lungs include chronic cough, fevers, chills, sweats at night and/or unexplained weight loss. TB can affect any organ of the body, and disease outside of the lungs is often harder to diagnose.

Nearly half of the TB cases in Orange County occur among people aged 65 or older, as aging and other health conditions weaken immunity - increasing the risk of TB becoming active.

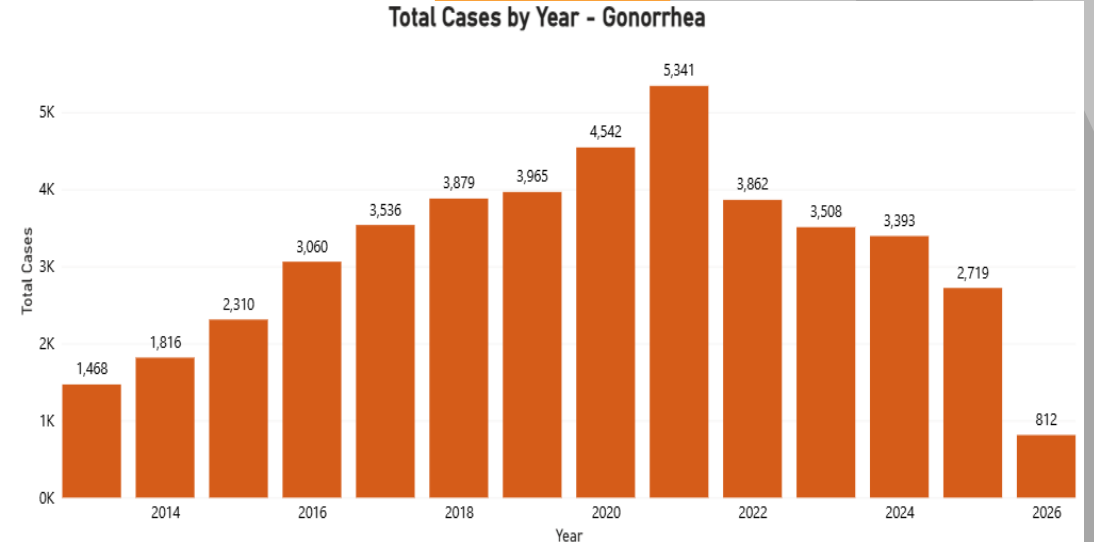
To strengthen prevention, [AB 2132](#), effective January 2025 - requires primary care providers to assess patients for TB risk and test those identified as at risk.

Treatment is strongly recommended for anyone who tests positive for LTBI. LTBI treatment is much shorter and easier than treatment for TB disease and may save lives. Remember: an ounce of prevention is worth a pound of cure!

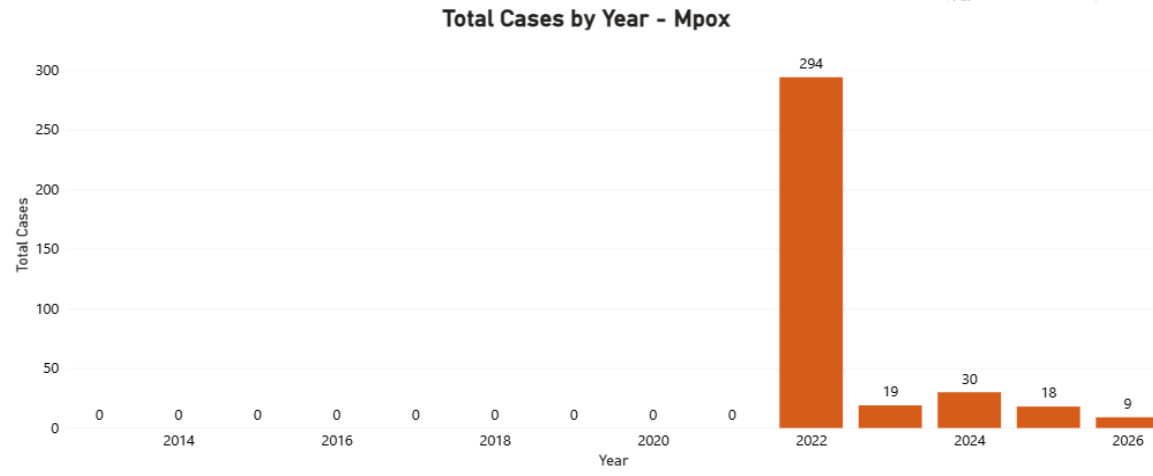
SEXUALLY TRANSMITTED INFECTIONS



Unstable rates are denoted by an asterisk (*) and should be interpreted with caution. See technical notes for further details.



Unstable rates are denoted by an asterisk (*) and should be interpreted with caution. See technical notes for further details.



Unstable rates are denoted by an asterisk (*) and should be interpreted with caution. See technical notes for further details.

Tables from Orange County Annual Communicable Disease Report Data Dashboard available at <https://ohealthinfo.com/cdcd/data>

HIV IN ORANGE COUNTY (2024)

Local Stats 2025

6,955 people living with HIV (known cases) and ~1,706 estimated undiagnosed.

80.3% of people with HIV know their status (CDC estimate).

230 new HIV diagnoses in 2024 — 14.8% decrease since 2020.

- 56 were diagnosed with AIDS at the same time, suggesting long-term undetected infection.

Treatment Advances

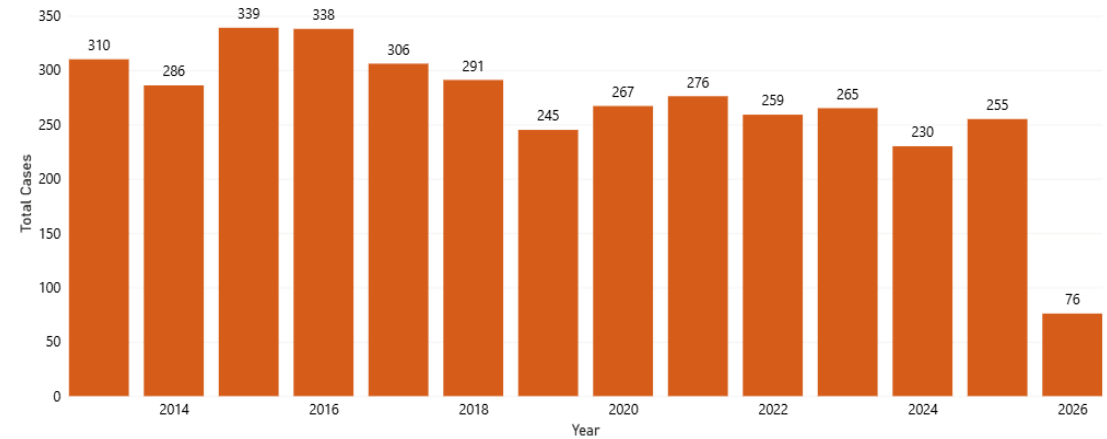
- HIV is now a manageable chronic condition with modern treatment.
- Most people can take one pill daily and reach undetectable viral levels.
- Undetectable = Untransmittable (U=U):
When viral load is undetectable, HIV cannot be sexually transmitted.

Christopher Ried, MD

MEDICAL DIRECTOR,
HIV/STD SERVICES, STD CONTROLLER



Total Cases by Year - HIV



Unstable rates are denoted by an asterisk (*) and should be interpreted with caution. See technical notes for further details.



Link to Health Corner Article: [World AIDS Day | Orange County California - Health Care Agency](#)

For more on Living with HIV, including resources in OC visit www.ohealthinfo.com/HIVCare.

For more on the HCA's HIV/STD services visit www.ohealthinfo.com/stihiv.

SYPHILIS

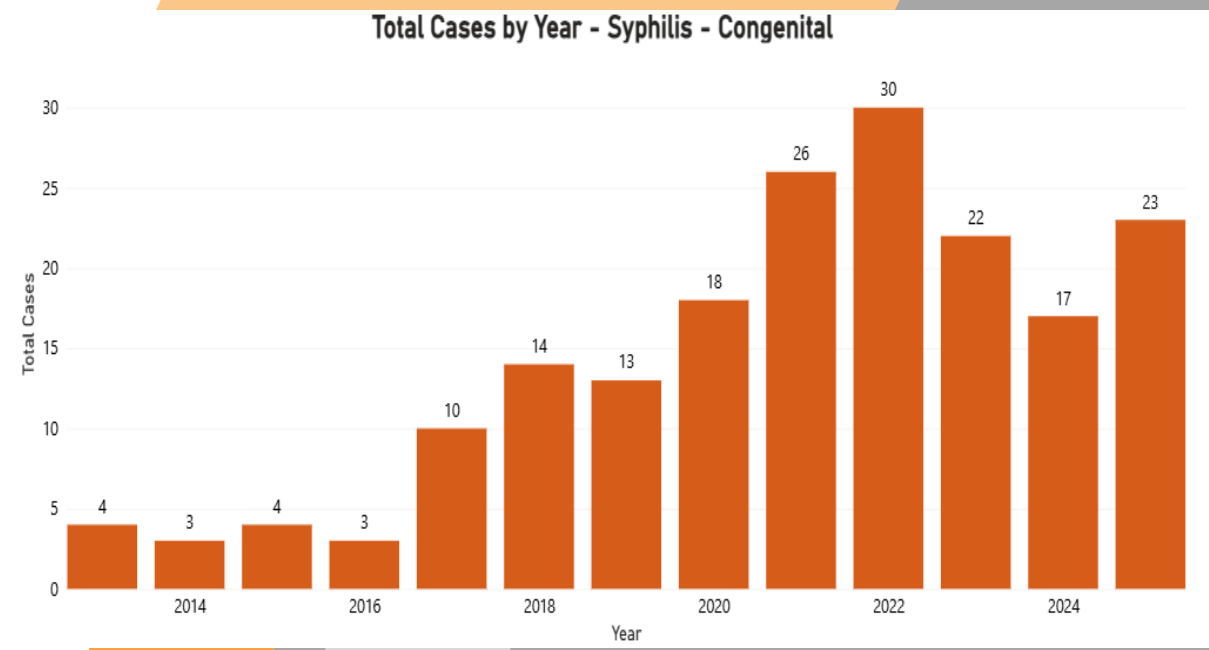
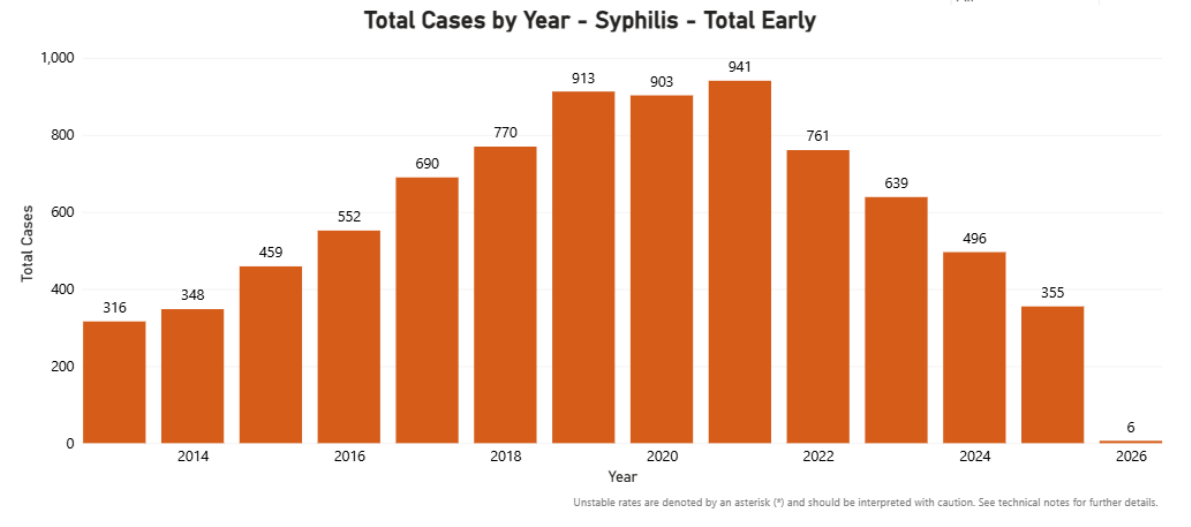
- Congenital Syphilis Incidence on the **Rise**

Increased incidence year-over-year since 2017

23 cases identified in 2025 compared to 17 the previous year (2024)

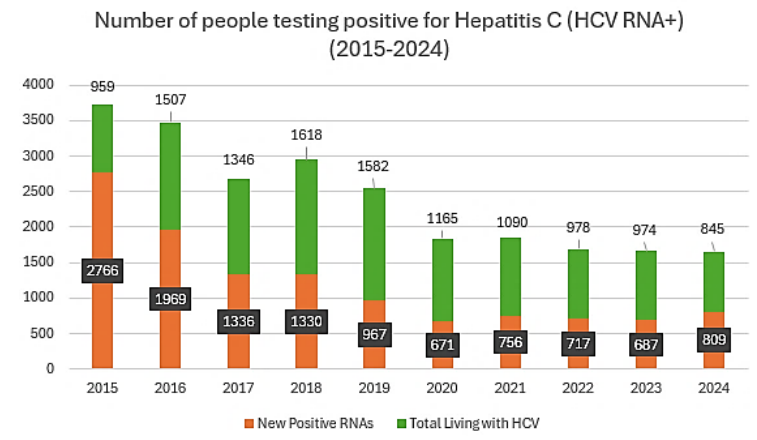
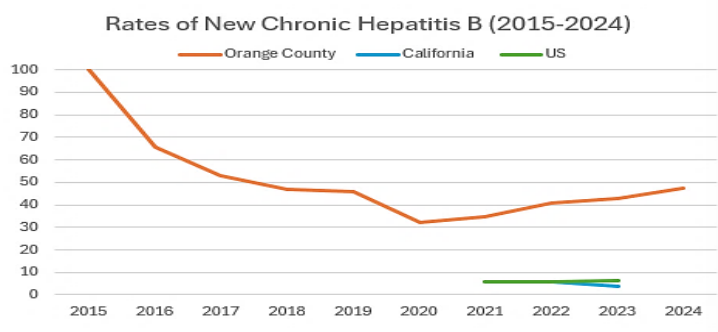
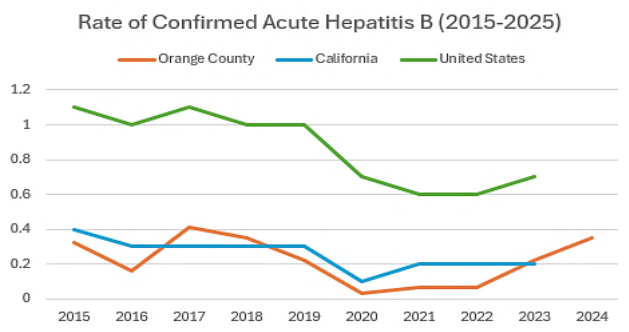
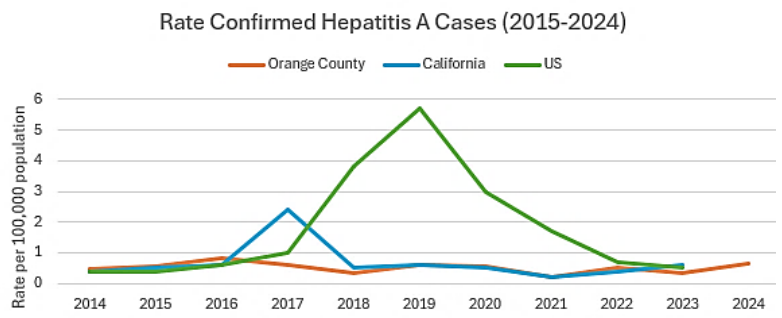
2025 Cases:

- 61% self-identified as Hispanic/Latinx
- 65% of cases lived in HPI Quartiles 1 and 2, indicating cases predominantly live in communities with less healthier conditions compared to other California census tracts (e.g. lower income, less insured, less access to healthcare)



Tables from Orange County Annual Communicable Disease Report Data Dashboard available at <https://ochealthinfo.com/cdcd/data>

HEPATITIS IN ORANGE COUNTY



HEALTH CORNER

HEPATITIS AND YOUR LIVER

Christopher Zimmerman, MD, MPH
 DEPUTY MEDICAL DIRECTOR
 COMMUNICABLE DISEASE CONTROL



Protecting Your Liver

Hepatitis A, B, and C all affect the liver differently:

- Hepatitis A: spreads through contaminated food, water or close contact; usually causes short-term illness; preventable with vaccination
- Hepatitis B: spreads through blood and bodily fluids; can be acute or chronic; preventable with vaccination
- Hepatitis C: spreads through blood-to-blood contact; often becomes chronic; highly curable with treatment

No matter the type, taking proactive steps can protect both your health and the health of those around you.

Simple Steps to Keep Your Liver Healthy

- Maintain a healthy weight
- Limit or avoid alcohol
- Get tested for hepatitis B and C
- Follow treatment and monitoring if infected
- Make sure you and your family are vaccinated against hepatitis A and B

Hepatitis A and B vaccines work very well. Countries that use the hepatitis A vaccine widely have seen big drops in the number of people getting sick over the past 30 years. Giving the hepatitis B vaccine at birth has almost completely stopped childhood hepatitis B in the United States. High vaccination rates help keep families and communities safe.

There is no vaccine for hepatitis C yet, but there are treatments that can cure most people. These treatments help prevent liver damage and reduce new infections.

Getting vaccinated for hepatitis A and B—and getting tested for hepatitis C so treatment can start early if needed—are important steps to help reduce hepatitis in the United States.

[Hepatitis and Your Liver | Orange County California - Health Care Agency](#)

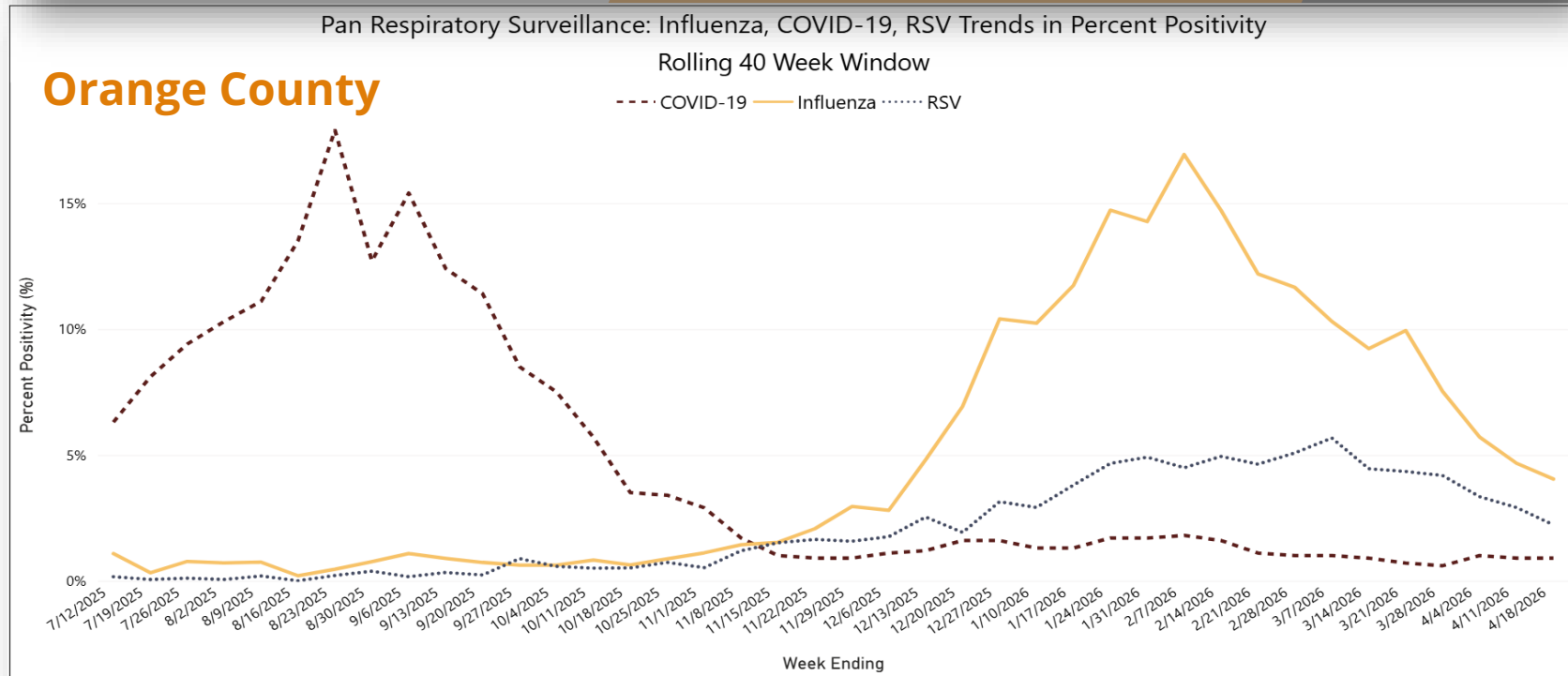
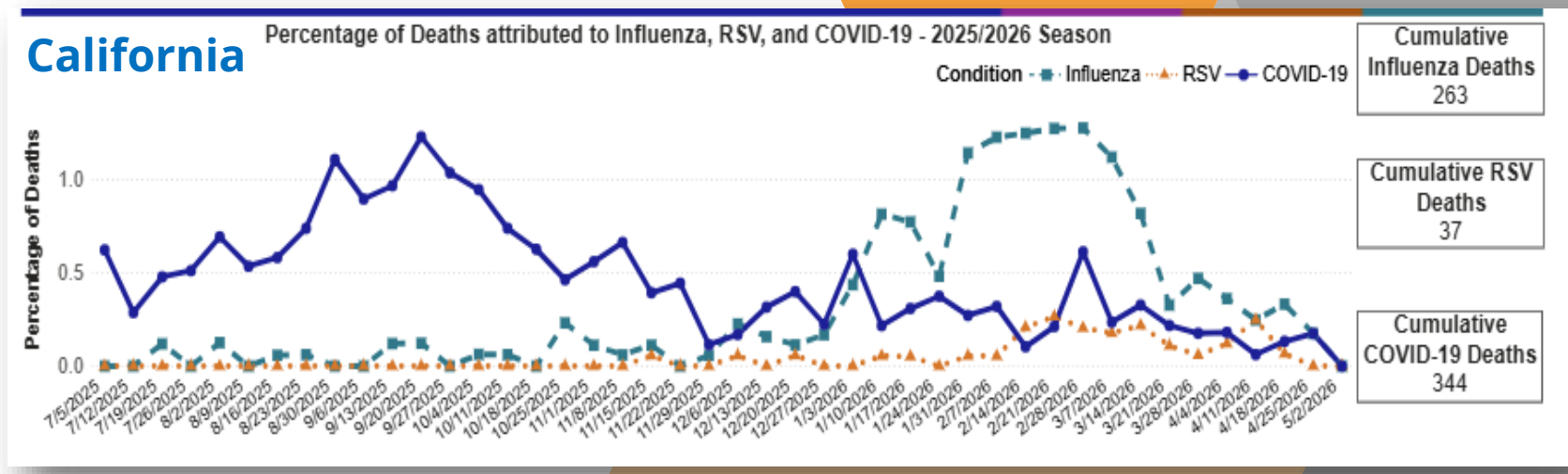
2025-2026 RESPIRATORY VIRUS SEASON

Flu season- moderate for adults and severe for children in the US

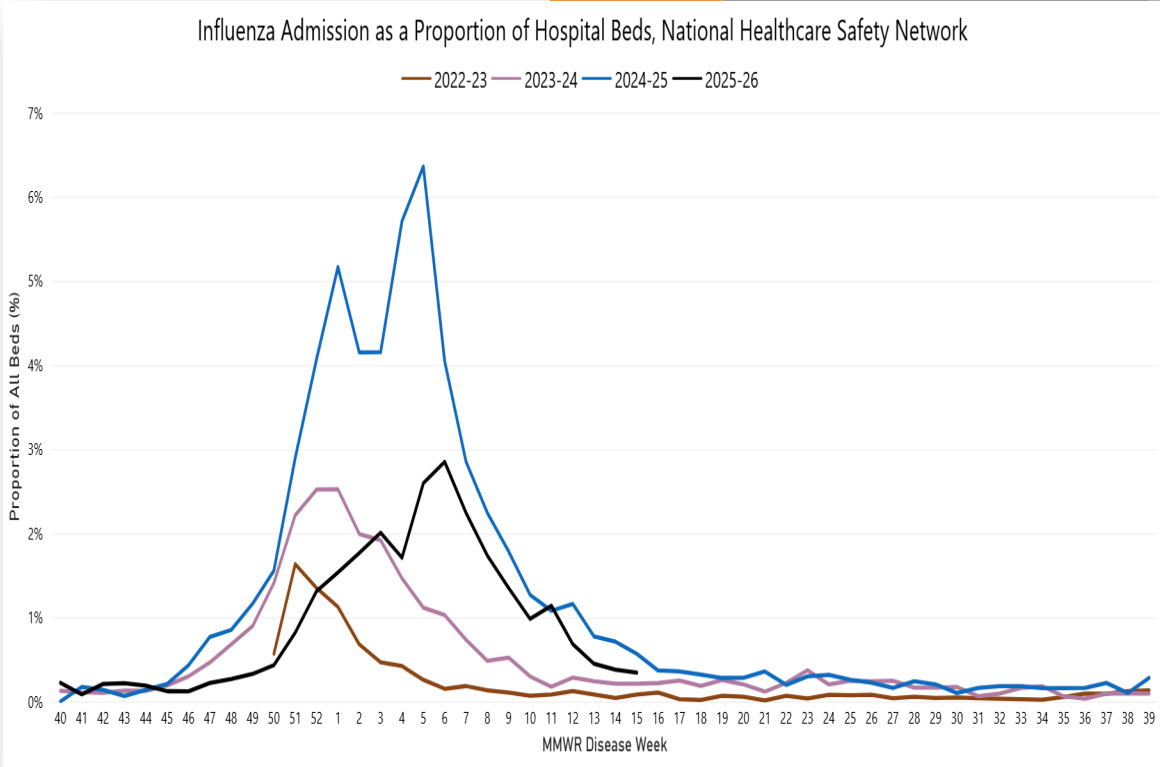
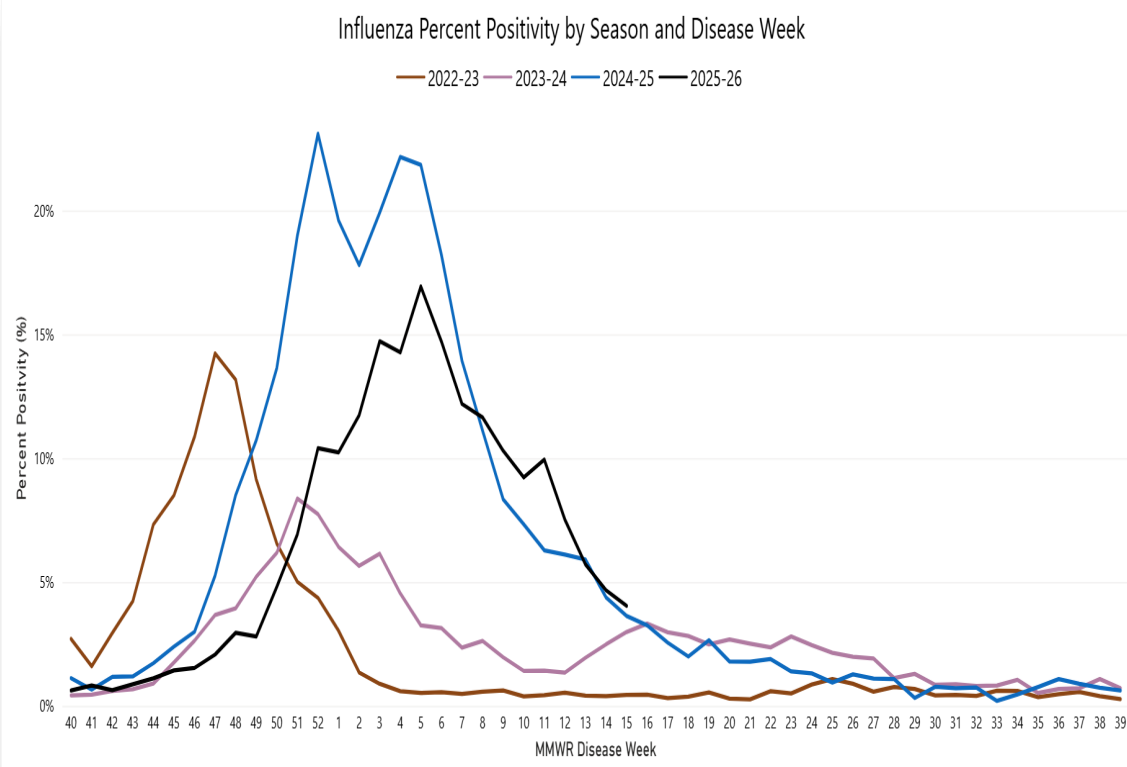
Respiratory Syncytial Virus season started and ended later than previous years

COVID-19 levels were high in some parts of country but low in California

CDPH table available at <https://www.cdph.ca.gov/Programs/CID/DCDC/Pages/RespiratoryVirusReport.aspx>
 OC Respiratory Surveillance trend available at <https://www.ohealthinfo.com/respiratoryvirus>



ORANGE COUNTY INFLUENZA 2025/2026 SEASON



- 2025-2026 Flu season improved compared to last flu season
Nationwide: 149 pediatric flu deaths (289 pediatric flu deaths previous season)
- OC: one pediatric death
 - 85% were not fully vaccinated

MEASLES

Measles can be serious.

Measles can cause severe health complications, including pneumonia, swelling of the brain (encephalitis) and death.



1 out of 5 people who get measles will be hospitalized.



1 out of every 20 children with measles will get pneumonia, the most common cause of death from measles in young children.



1 out of every 1,000 people with measles will develop brain swelling, which may lead to brain damage.



1 to 3 out of 1,000 people with measles will die.

Long-term complications

A very rare, but deadly disease called subacute sclerosing panencephalitis can develop 7 to 10 years after a person has recovered from measles.

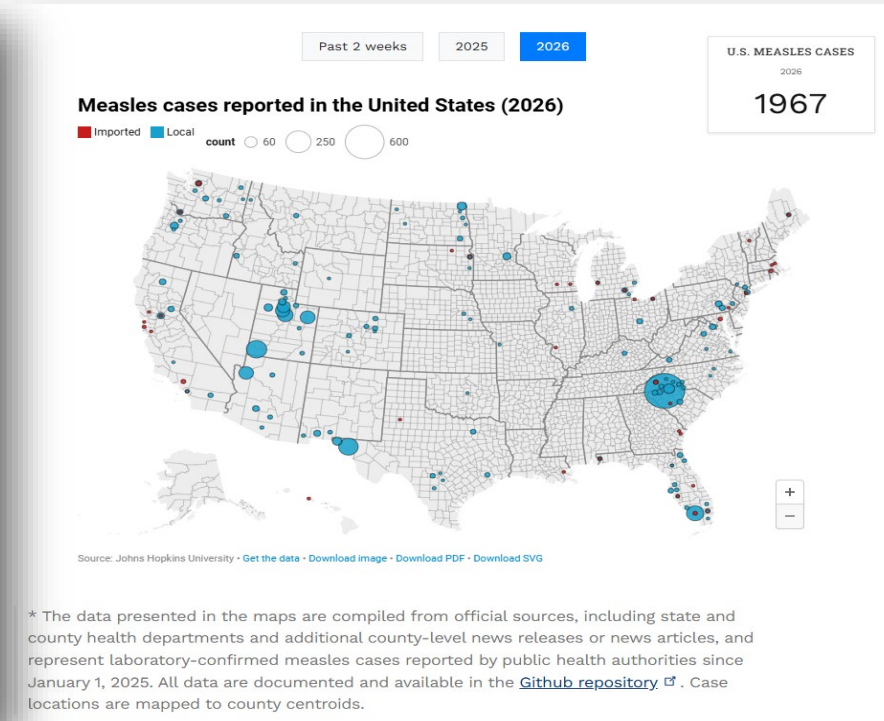


You have the power to protect your child.

Provide your children with safe and long-lasting protection against measles by making sure they get the measles-mumps-rubella (MMR) vaccine. Talk to your healthcare provider.



www.cdc.gov/measles



[Image from Johns Hopkins U.S. Measles Tracker | International Vaccine Access Center](#)

Measles Activity- California 2026

As of May 11, 2026, there have been 48 confirmed measles cases reported

| Month of Rash Onset | Number of Cases | County of Cases |
|---------------------|-----------------|---|
| January 2026 | 14 | Los Angeles, Napa, Orange, Placer, Riverside, Sacramento, San Mateo, Shasta |
| February 2026 | 13 | Los Angeles, Placer, Sacramento, Santa Clara, Shasta |
| March 2026 | 9 | Placer, Sacramento |
| April 2026 | 12 | Orange, Riverside, Sacramento, San Francisco |
| May 2026 | 0 | |

These data are provisional and subject to change. CDPH will update this page every Tuesday.

Cases by Age

| Age Group | Number of Cases (%) |
|---------------|---------------------|
| Under 5 years | 15 (31%) |
| 5-19 years | 26 (54%) |
| 20+ years | 7 (15%) |

Cases by Vaccination Status

| Measles Vaccination Status | Number of Cases (%) |
|----------------------------|---------------------|
| Unvaccinated or Unknown | 45 (94%) |
| One Dose | 1 (2%) |
| Two Doses | 2 (4%) |

Hospitalizations and Deaths

| | |
|--------------------|--------|
| Total Hospitalized | 3 (6%) |
| Total Deaths | 0 |

From CDPH Center for Infectious Diseases, Division of Communicable Disease Control, Measles webpage updated every Tuesday, available at <https://www.cdph.ca.gov/Programs/CID/DCDC/Pages/Immunization/measles.aspx>

WHAT HAPPENS IF THERE'S A MEASLES CASE

- Public Health staff act immediately to
 - **Identify, notify, and prioritize** exposed contacts who may need prophylaxis to reduced their chance of developing measles.
 - MMR within 72 hours or
 - Immune globulin within 6 days
 - Determine when and where the case was infectious.
 - Contact places the individual visited to identify people who may have been exposed.
- To protect the community, anyone **exposed without documented immunity** must be **excluded from work or certain settings** for up to **21 days!**



Take Action - Protecting Against Community Measles Outbreaks through Herd Immunity

When a community reaches herd immunity, outbreaks become rare and even those at higher risk are shielded from infection

- **About 95% of the community** needs to be immune to measles for it to not spread

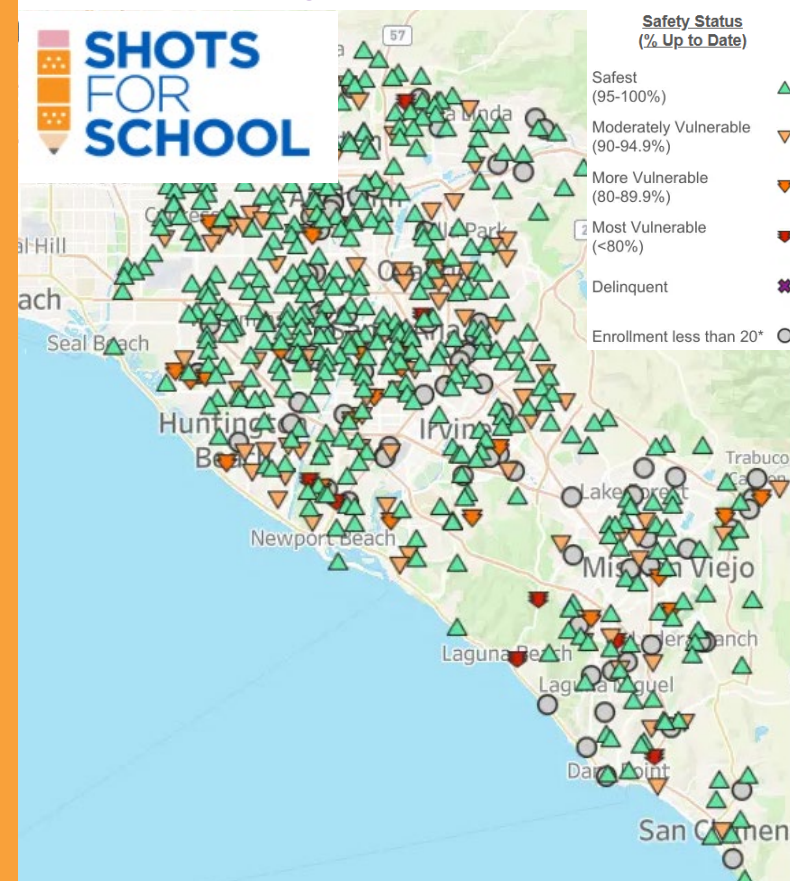
If a community has less than 95% immunity, then spread can happen and there can be outbreaks



Orange County School (public & Private) MMR Coverage at Kindergarten Entry

| School Term | % Complete MMR |
|-------------|----------------|
| 2024-2025 | 98% |
| 2023-2024 | 97% |
| 2022-2023 | 98% |
| 2021-2022 | 98% |
| 2020-2021 | 97% |
| 2019-2020 | 97% |
| 2018-2019 | 97% |
| 2017-2018 | 97% |

Find Out How Well Vaccinated Your Child's School or Child Care Facility is Vaccinated at



Shots for School Map Tool accessible at <https://www.cdph.ca.gov/Programs/CID/DCDC/Pages/Immunization/School/HowDoing.aspx>

PROTECT YOURSELF, YOUR FAMILY AND COMMUNITY

Prepare for Measles

- **Know Immunity Status**
- **Get Vaccinated***
 - **6mo-11mo infants** can get early dose if traveling to area with high measles activity
 - Everyone age **12 months and older** are advised have received at least **2 doses** of the vaccine prior to travel to an area with increased measles activity (doses can be separated by at least 28 days)
- **Stay Informed**
 - Follow HCA Social Media Page for alerts
 - Learn about measles at <https://ohealthinfo.com/services-programs/disease-prevention/diseases-conditions/measles>
 - Read the HCA Health Corner Articles available at <https://ohealthinfo.com/healthcorner> Measles Article: [Together, We Can Prevent Measles in Orange County | Orange County California - Health Care Agency](#)



Click on Image to start Video of Dr. Anissa Davis's message About Measles



Prevent

MEASLES

Measles is very contagious.



Measles spreads when someone infected speaks, coughs, sneezes or breathes.



Measles can linger in the air up to one hour after an infected person has left a room.

The Measles, Mumps, and Rubella (MMR) vaccine is the best protection against measles.

Make sure you're vaccinated.

If you don't know your vaccination status talk to your health care provider.



You can learn more about measles and schedule an MMR vaccine at myturn.ca.gov.



WHAT ARE WE DOING IN ORANGE COUNTY

Modernizing

- **Communication**

- Increase Community Awareness
 - Annual State of Public Health Address
 - Partnership discussions and engagement
 - Social Media Posts
 - Healthy OC Newsletter
 - New HCA Videos

- **Data and Dashboards**

Collaborating and Strengthening Partnerships



OCHEALTHINFO.COM



OC Links
 OC Links provides 24/7 information & linkage to any of the OC Health Care Agency's Behavioral Health Services programs ranging from prevention to crisis response via phone/chat.



Public Health Clinic Updates
 Some PHS Clinical Services will be discontinued including the Children's, Family PACT, and Emergency Dental Clinic. Call the Health Referral Line (M-F 8 a.m. to 5 p.m.) for...



OC Navigator
 Find help in Orange County by connecting with health, wellness, and other resources.



Health Corner
 We're pleased to feature the medical doctors of the OC Health Care Agency (HCA) who share insights and expertise on health and wellness matters that affect you and your family.



Behavioral Health and Wellness
 Behavioral Health Services supports mental wellness and substance use services that are kind, respectful and offer hope and healing. Learn more..



Healthy OC Newsletter
 Our Healthy OC newsletter offers information and resources to help our community care for physical and mental wellness. See current publication...

Public Health Dashboards

Annual Communicable Disease Report Dashboard

<https://ochealthinfo.com/cdcd/data>

OC Respiratory Virus Surveillance Dashboard

COVID-19, Flu and RSV data:

<http://ochealthinfo.com/respiratoryvirus>

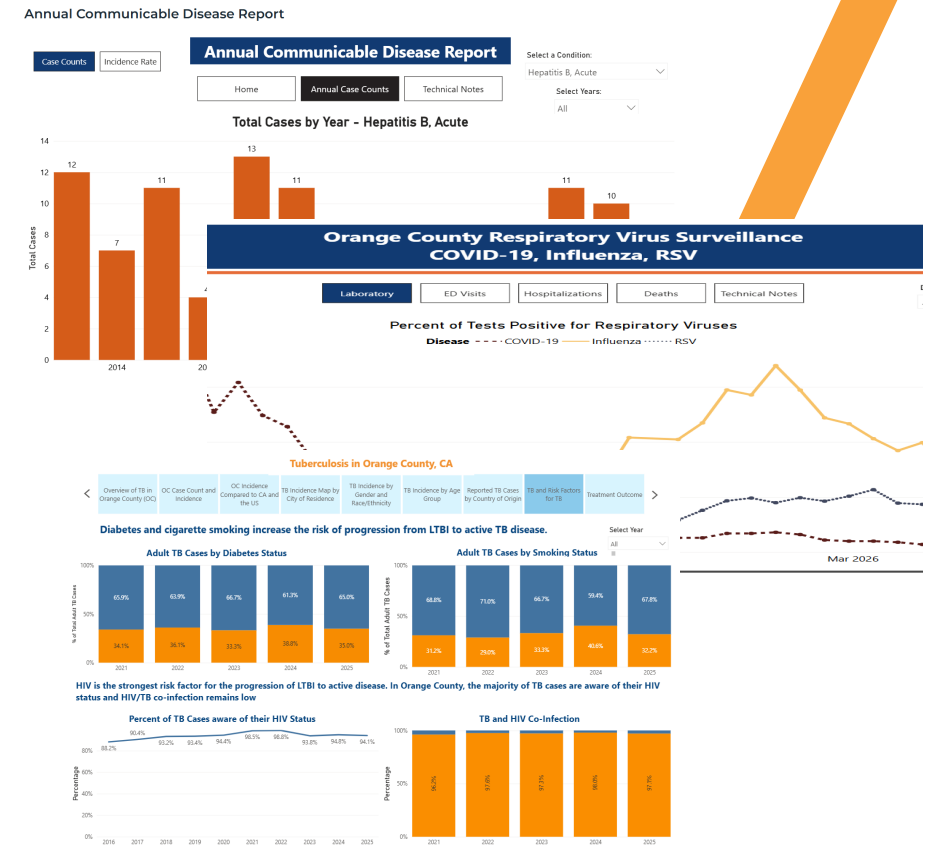
OC HIV/Tuberculosis

HIV/AIDS data: <http://ochealthinfo.com/hiv/stats>

Tuberculosis data: <http://ochealthinfo.com/public/tb>

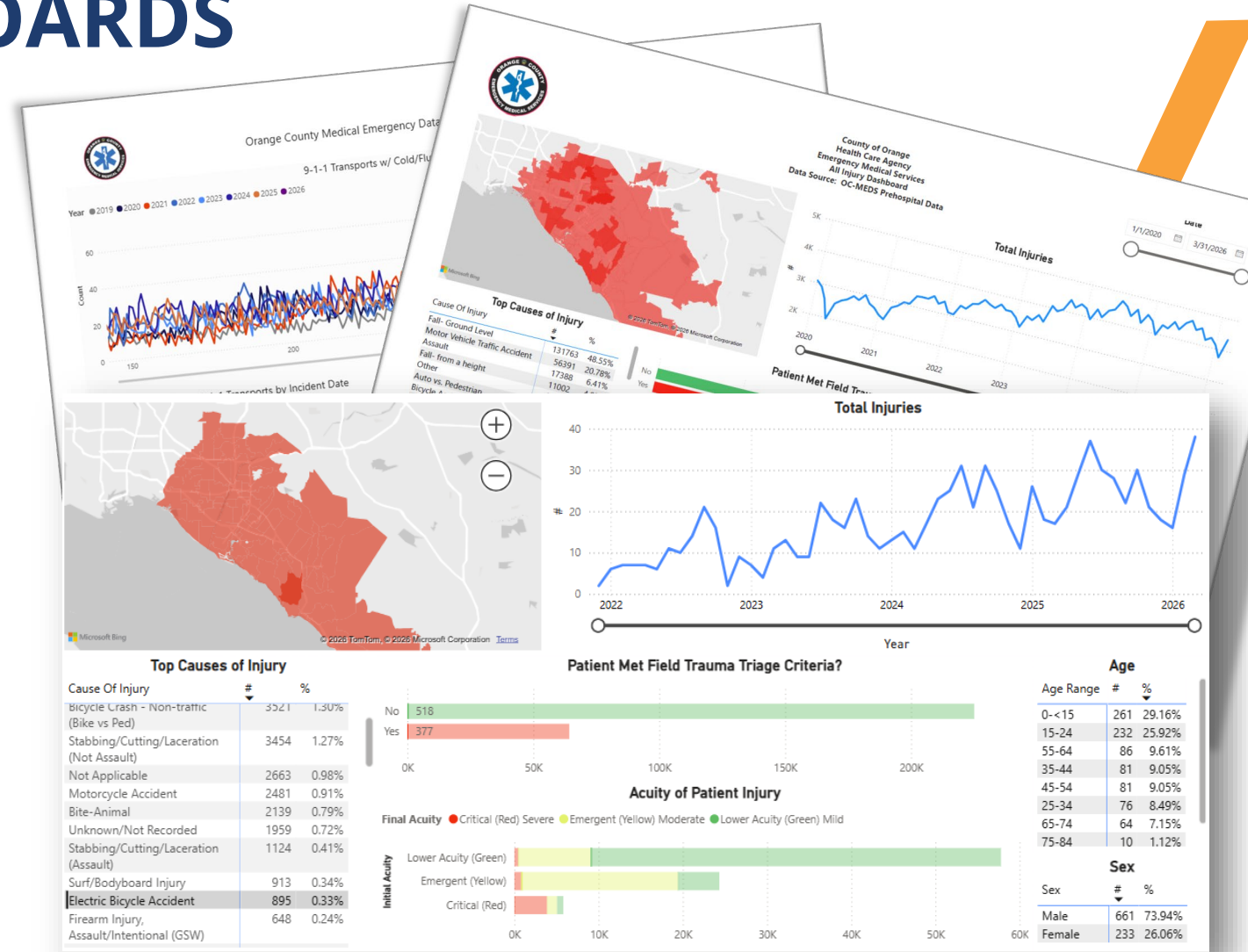
Vital Statistics

Link to State of California's Department of Public Health Vital Statistics <https://www.cdph.ca.gov/Programs/CHSI/Pages/Data-and-Statistics-.aspx>



EMS DASHBOARDS

- EMS Dashboards available at [Prehospital Care and Transport Reports | Orange County California - Health Care Agency](#)
- **New All Injury Dashboard**
 - Displays the cause of injury
 - Data is taken from documentation by EMS providers during emergent 9-1-1 patient responses



PARTNERSHIPS AND COLLABORATIVES

IMMUNIZATIONS



OC Immunization Coalition

Dedicated and committed to making a positive difference in the health of OC residents by promoting routine recommended immunizations countywide, through the active collaboration and support of concerned, creative community leaders.

Recent engagements

- Local Medical Associations
- Local Clinical Leader discussions
- Updates with local Education leaders
- Your Local Epidemiologist- California



PARTNERSHIPS AND COLLABORATIVES



E-BIKE INJURY PREVENTION AND INTERVENTION



ON THE MOVE
- OCTA'S TRANSPORTATION BLOG -



OCTA E-Bike Safety Presents: Round Planet

Learn more and watch video at <https://www.octa.net/getting-around/active/oc-bike/e-bike-safety>

FIREWORK INJURY PREVENTION & INTERVENTION



PARTNERSHIPS AND COLLABORATIVES



WORKING TOWARD A **UNIFIED**
COMMUNITY HEALTH ASSESSMENT AND COMMUNITY HEALTH
IMPROVEMENT PLAN (CHA/CHIP)

CHIP Work Groups

Mental Health

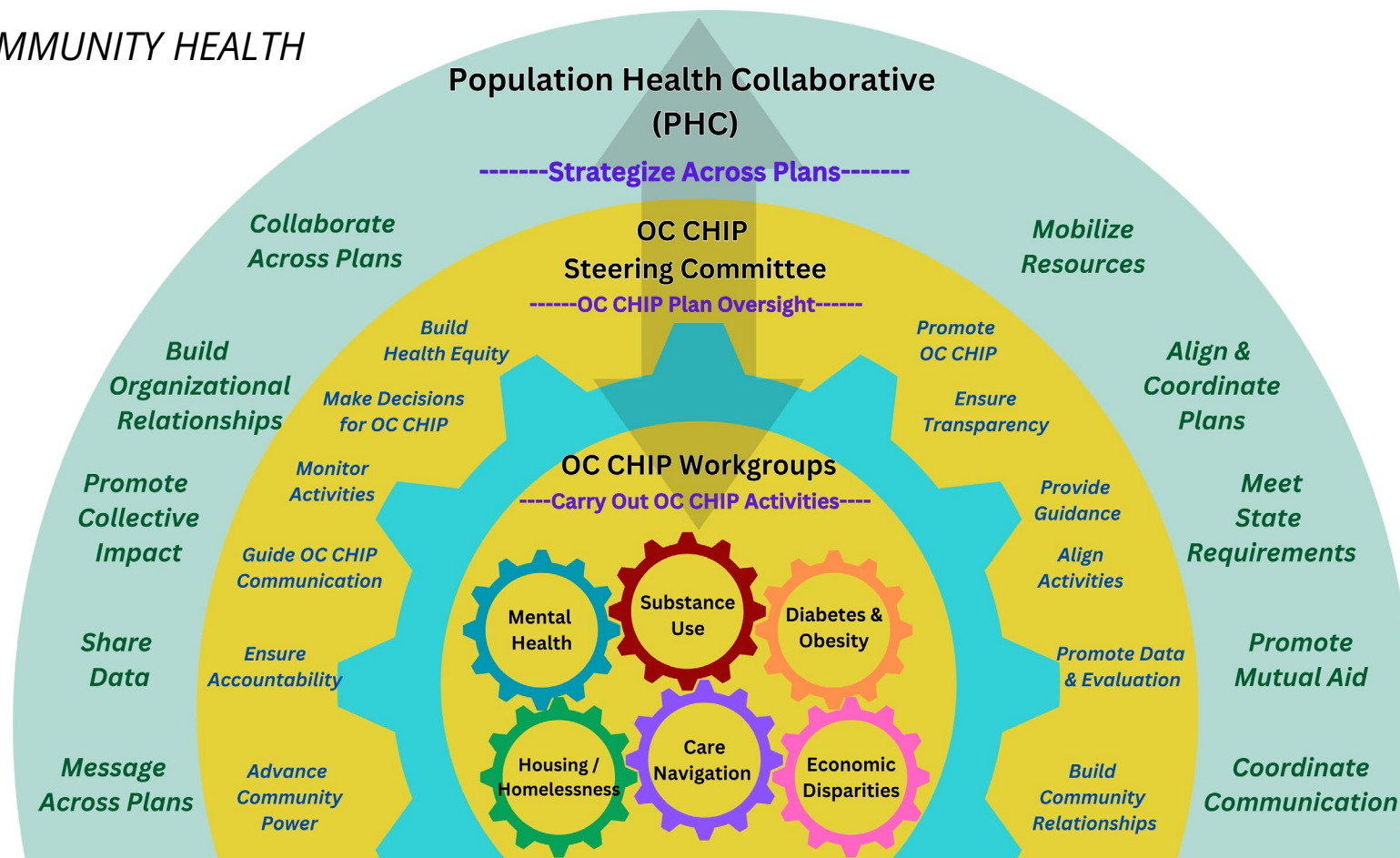
Substance Use

Diabetes and Obesity

Housing and Homelessness

Care Navigation

Economic Disparities



[Link to OC Community Health Improvement Plan | Orange County California - Health Care Agency](#)



DIABETES AND OBESITY WORKGROUP CAMPAIGN

#MoveYourWayOC



Health Awareness

Promote regular exercise activity to strengthen physical health, support mental well-being and prevent chronic disease.

Empowered Choices

Encourage residents to find simple, realistic ways to be active each day for long-term health and well-being.

Inclusive Options

Ensure people of all ages, abilities, cultures and communities in OC feel included in opportunities to be active.

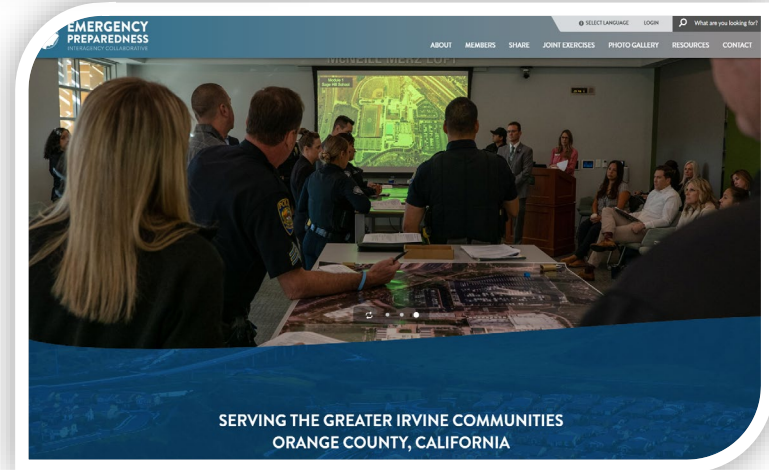
Actionable Solutions

Connect OC residents to trusted tools & opportunities to be active through awareness campaign.

LOCAL COMMUNITY PREPAREDNESS ACTIVITIES



- HCA Training
 - Clinical Skills Day
- Multi-Agency
 - Inaugural Orange County Trauma Systems of Care meeting December 2025
 - Bio-Preparedness Training 2026
- Community- Led
 - Emergency Preparedness Interagency Collaborative (EPIC)
- Upcoming Sport Events coming to SoCal
 - World Cup-FIFA Preparedness
 - Cities and local agencies are actively preparing for increased volume of visitors
 - LA 28 preparedness



OC MASTER PLAN ON AGING

Countywide effort to aggregate and communicate services to support older adults and caregivers, visit OCNavigator.org, Resource Guides



Resource Guides

Browse hand-picked lists of resources for different needs and topics created with partner organizations and members of the OC community.

Caregiver Resource Guide

By OC CARES: Orange County's Master Plan for...

Older Adults Resource Guide

By OC CARES: Orange County's Master Plan for...

Correctional Health Services: Programs and Services Overview

By Correctional Health Services

Older Adults Resource Guide

By OC CARES: Orange County's Master Plan for Aging – Developed by Orange County Agencies [Visit Website](#)

Print 4 Likes Updated: 03/24/26

About This Guide

This guide is designed to help older adults easily find resources that support healthy, independent and connected living. It brings together programs and services available in Orange County, organized by topic for quick reference. Whether you need help with meals, housing, health care or social activities, this guide serves as a starting point to connect you with trusted local resources.

Caregiver Resource Guide

[Visit guide](#)

Jump to Topic

- Information & Referral Services ↓
- Meals & Nutrition Support ↓
- Housing & Shelter ↓
- Safety, Transportation & Advocacy ↓
- Health Insurance & Care Access ↓
- Health & Wellness ↓
- Financial, Legal & Practical Support ↓
- Social Engagement & Community ... ↓
- Work, Volunteering & Purpose ↓
- Emergency Preparedness & Public... ↓

Remain Prepared ...

For Natural and Man-Made Disasters



EXTREME HEAT



FLOODS



EARTHQUAKES



WILDFIRES



WILDFIRE
SMOKE



POWER
OUTAGE



ACTIVE
SHOOTER



CYBER
CRIME

CLOSING

RESILIENCE AND REINVENTION PROTECTING PUBLIC HEALTH IN A CHANGING WORLD



Hope. Heal. Thrive.

أمل. تعافي. إزدهار.
اميد. التيام. شكوفايي.
희망. 치유. 번영.
Надежда. Восстановление. Благополучие.
希望。疗愈。发展。
Esperanza. Sanación. Prosperidad.
心懷希望。療癒身心。向陽而生。
Hy vọng. Hồi phục. Vươn mình.



Local Hotlines:

911

Emergency Services

Life-threatening emergencies, major injuries. Paramedics come to you.

988

Suicide & Crisis Lifeline

Call or text for mental health crisis or suicidal thoughts. Free & confidential.

855-625-4657

OC Links

Behavioral health resource linkage. Free, confidential, phone & online chat.

211

211 OC

Food, housing, shelter, social services. Language help available.

800-222-1222

Poison Control

Swallowed something dangerous? Call immediately, any time.

988 → Press 1

Veterans Crisis Line

For veterans & service members. Text 838255 or veteranscrisisline.net.

714-991-6412

NAMI OC Warmline

Peer mental health support, noon–midnight. TF: 877-910-9276

877-854-3594

Domestic Violence (OC)

Safe, confidential support. National: 800-799-7233

800-207-4464

Child Abuse Hotline

Report child abuse or neglect in OC. Available 24/7.

Sexual Assault Crisis

OC Links: (855) 625-4657
Waymakers OC: North: 714-957-2737 / South: 949-831-9110

Human Trafficking

888-373-7888
[Submit a Tip Online](#)

Local Resources:

OC Health Care Agency

Public health, immunizations, behavioral health, community clinics.

ohealthinfo.com

OC Navigator

Find mental health, substance use, and support resources near you.

ocnavigator.org

OC Social Services

CalFresh, Medi-Cal enrollment, CalWorks, child & adult services.

ssa.ocgov.com

Find Help OC

Search food, housing, financial help & health care near you.

findhelp.org

OC Veterans Services

Benefits, health care, support for OC veterans and families.

veterans.ocgov.com

WIC Program

Nutrition support for pregnant women, new moms, infants & children under 5.

888-968-7942 · **Women, Infants & Children (WIC) | Orange County Health Care Agency**

OC Homeless Services

Shelter, outreach, and support for people experiencing homelessness.

ocgov.com/homeless-services

Office on Aging

IHSS, Meals on Wheels, transportation, caregiver support for older adults.

800-510-2020 or 714-480-6450

officeonaging.ocgov.com

Quit Smoking / Vaping

Free counseling and support to quit smoking or vaping for good.

1-866-NEW-LUNG

1866newlung.com



FOLLOW US ON SOCIAL MEDIA & SHARE OUR POSTS



www.ochealthinfo.com



OC Health Care Agency



@ochealthinfo



@ochealth



@oc_hca



@ochealth